

Forest Service Air Quality Research and Development

2008 update

Elizabeth Reinhardt

Smoke Research Activities

- A new newsletter, Southern Smoke Issues
- Contact: Scott Goodrich, editor.

Smoke Research



Prescribed Fire Combustion - Atmospheric Dynamics Research Experiments

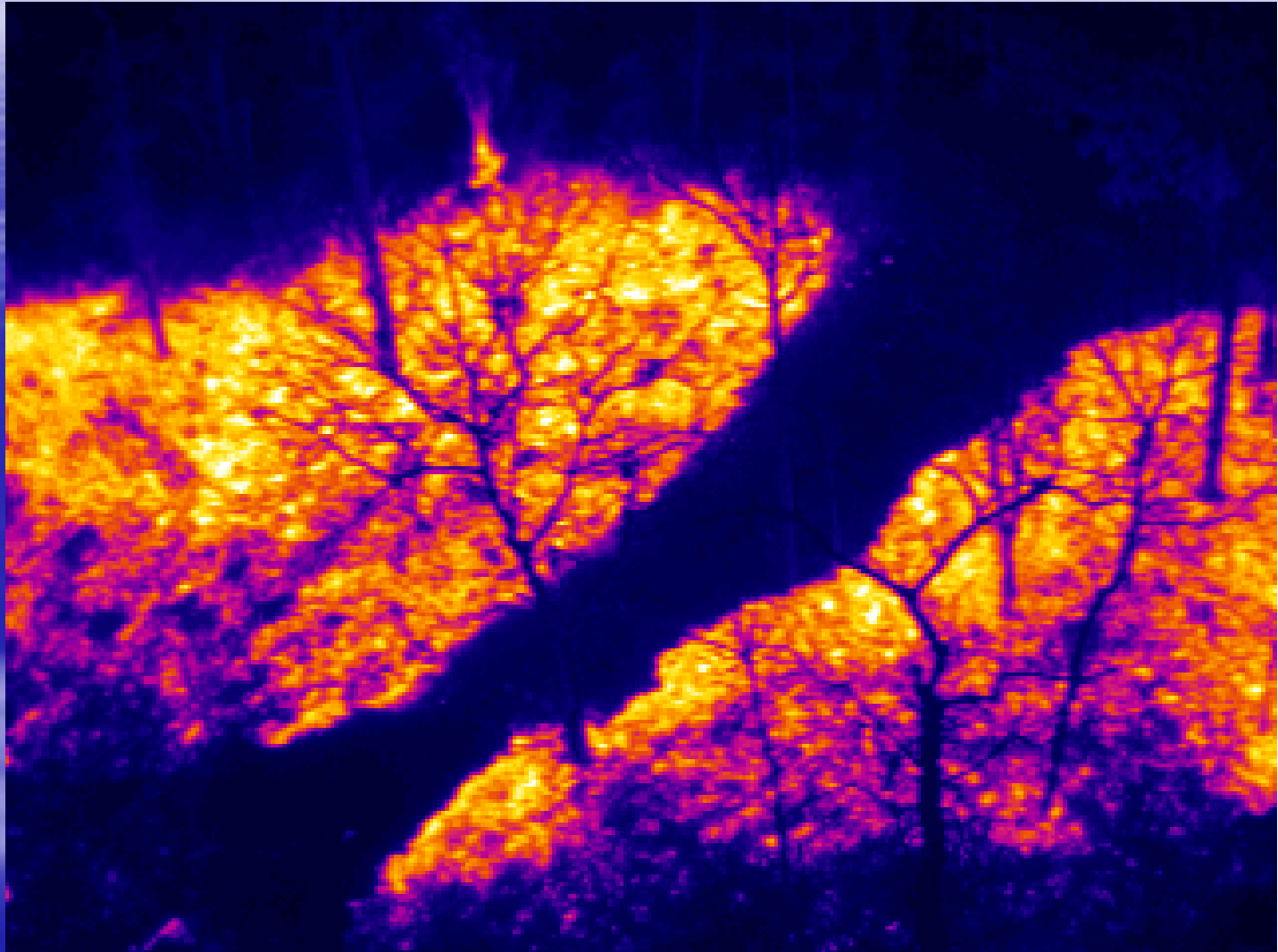
- Elgin Air Force Base and Jones Ecological Research Center
- 5 burns, 4500 acres

Objectives

- Compare in situ and remote sensed heat environments
- Document coupled atmospheric interactions
- Validation data for coupled fire-atmospheric dynamic models
- Relate fire behavior to first order fire effects







691.3°C



<300.0°C

National BlueSky Product

- PM2.5, Haines Index
- 3 day and 7 day predictions, lower 48
- http://cefa.dri.edu/FCAMMS/fcamms_home.php



FCAMMS National Prediction

Powered by Bluesky

by NAM Based

ver:

PM 2.5

aines Index*

gle Earth*

VS*

icast Grid

by GFS Based

ver:

PM 2.5*

aines Index*

gle Earth*

VS*

icast Grid

Documentation

ject Description

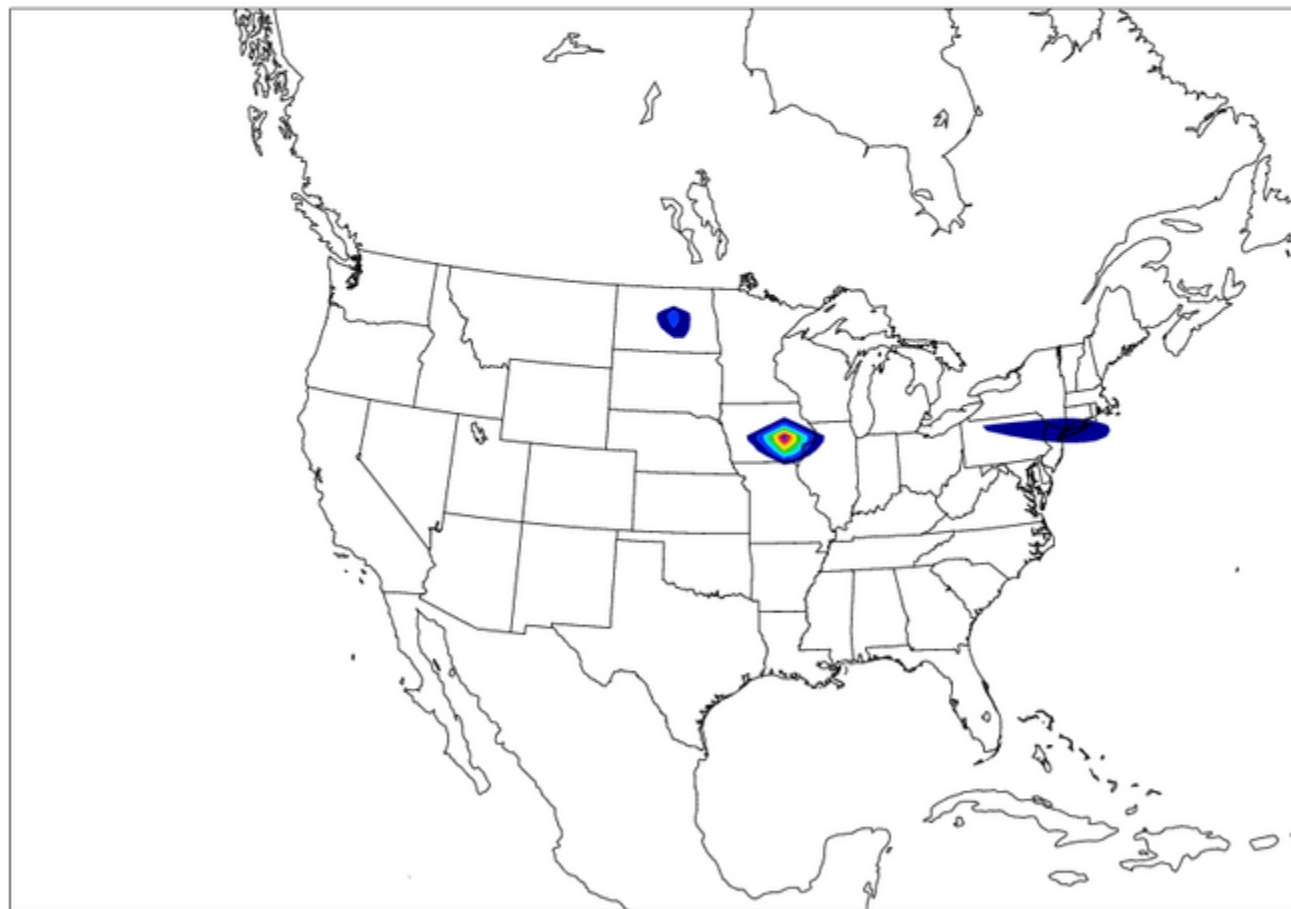
Links

.MMS

sky

Start < > Rock Zoom Set Animation Speed Refresh

NAM PM 2.5 Forecast Initialized 2008041300



Forecast Hour 2



FCAMMS National Prediction

Powered by Bluesky

by NAM Based

ver:

PM 2.5

aines Index*

gle Earth*

VS*

icast Grid

by GFS Based

ver:

PM 2.5*

aines Index*

gle Earth*

VS*

icast Grid

Documentation

ject Description

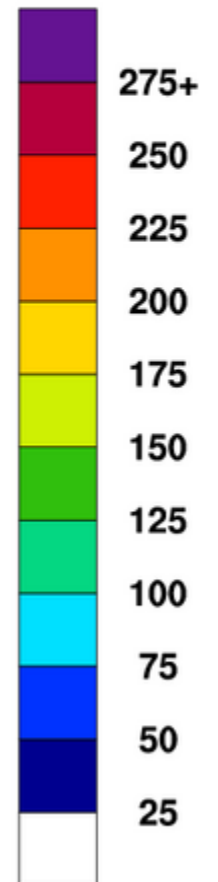
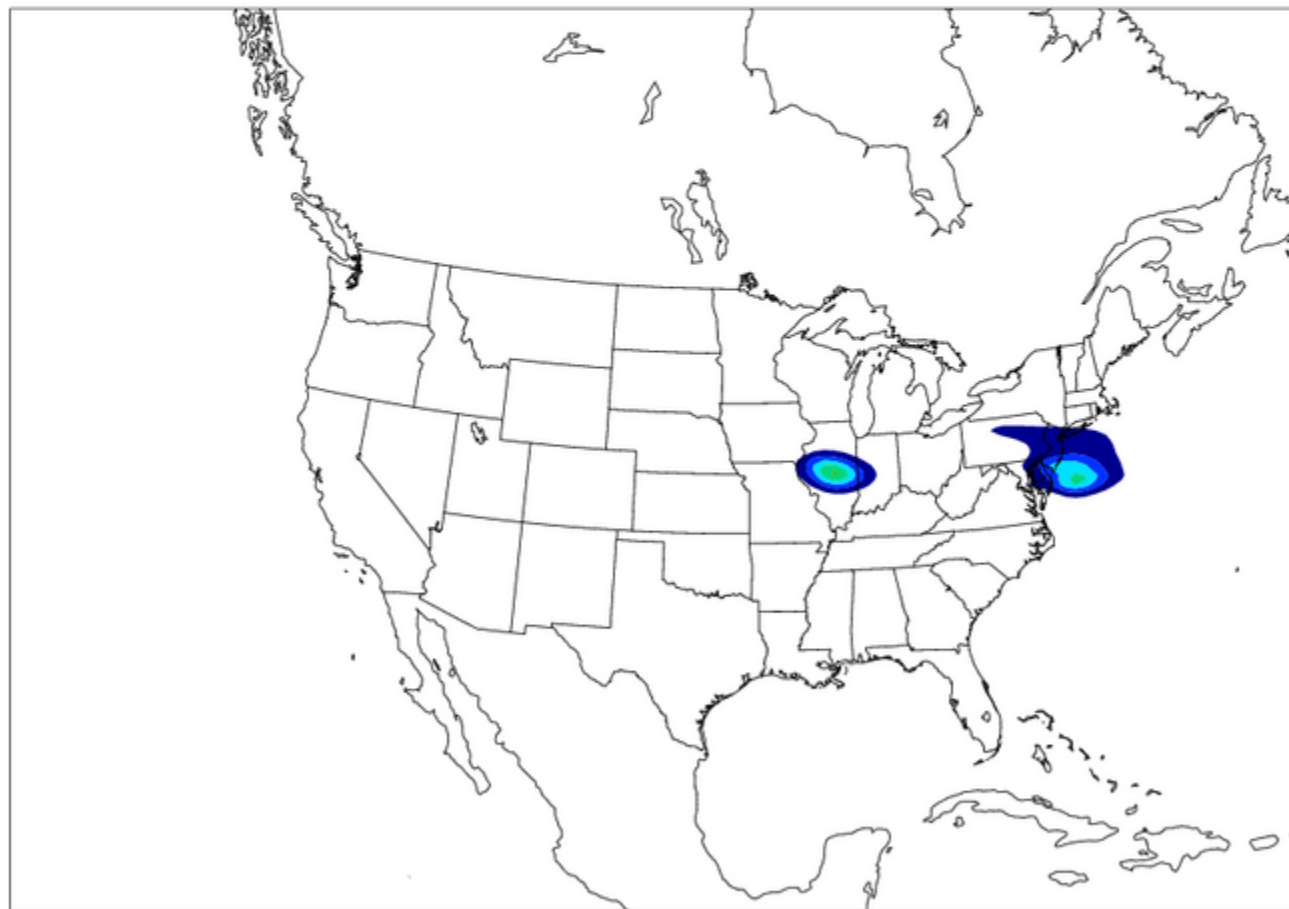
Links

.MMS

sky

Start < > Rock Zoom Set Animation Speed Refresh

NAM PM 2.5 Forecast Initialized 2008041300



Forecast Hour 9



FCAMMS National Prediction

Powered by Bluesky

by NAM Based

ver:

PM 2.5

aines Index*

gle Earth*

VS*

icast Grid

by GFS Based

ver:

PM 2.5*

aines Index*

gle Earth*

VS*

icast Grid

Documentation

ject Description

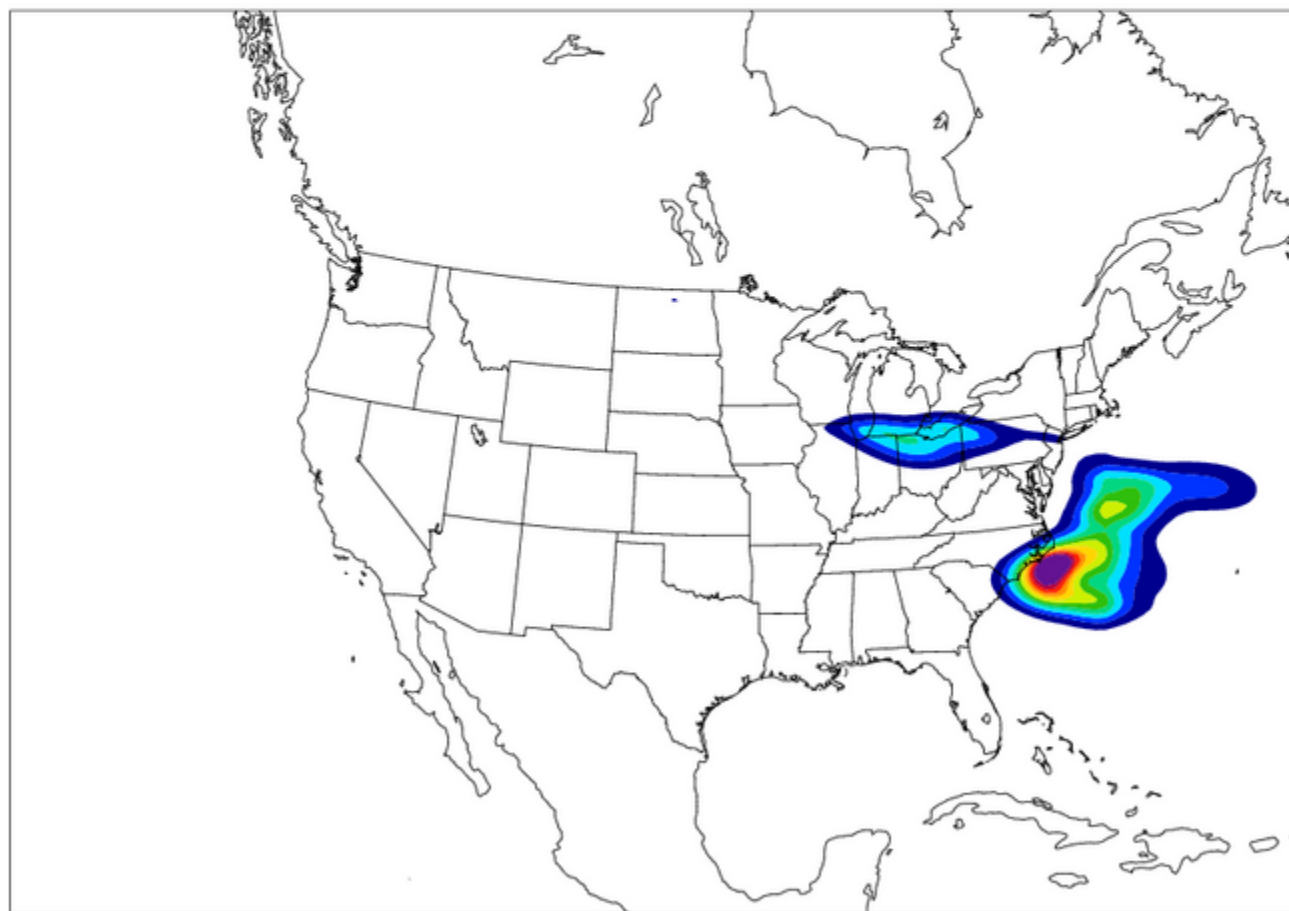
Links

.MMS

sky

Start < > Rock Zoom Set Animation Speed Refresh

NAM PM 2.5 Forecast Initialized 2008041300



Forecast Hour 16



FCAMMS National Prediction

Powered by Bluesky

by NAM Based

ver:

PM 2.5

aines Index*

gle Earth*

VS*

icast Grid

by GFS Based

ver:

PM 2.5*

aines Index*

gle Earth*

VS*

icast Grid

Documentation

ject Description

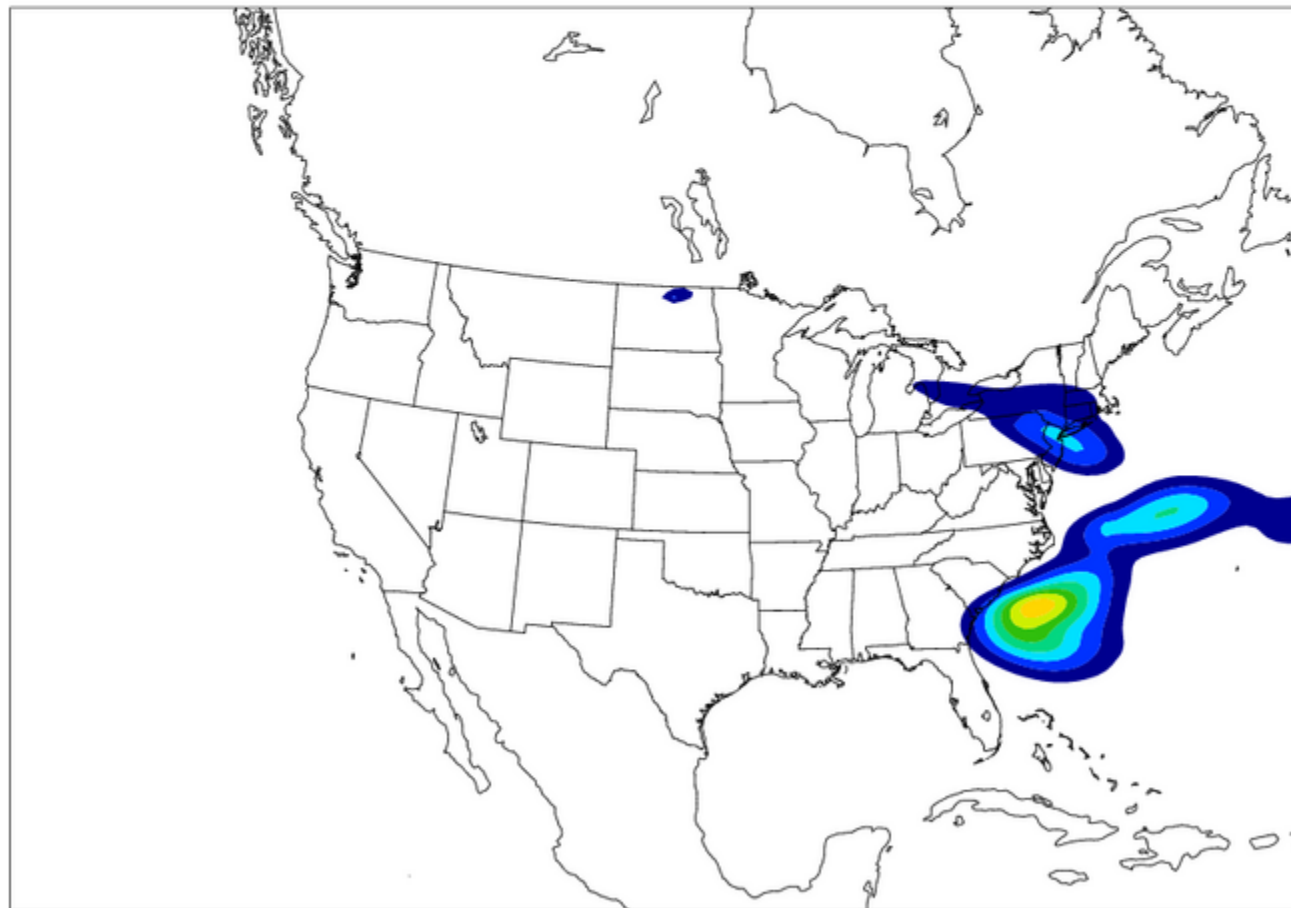
Links

.MMS

sky

Start < > Rock Zoom Set Animation Speed Refresh

NAM PM 2.5 Forecast Initialized 2008041300



Forecast Hour 22



FCAMMS National Prediction

Powered by Bluesky

by NAM Based

ver:

PM 2.5

aines Index*

gle Earth*

VS*

icast Grid

by GFS Based

ver:

PM 2.5*

aines Index*

gle Earth*

VS*

icast Grid

Documentation

ject Description

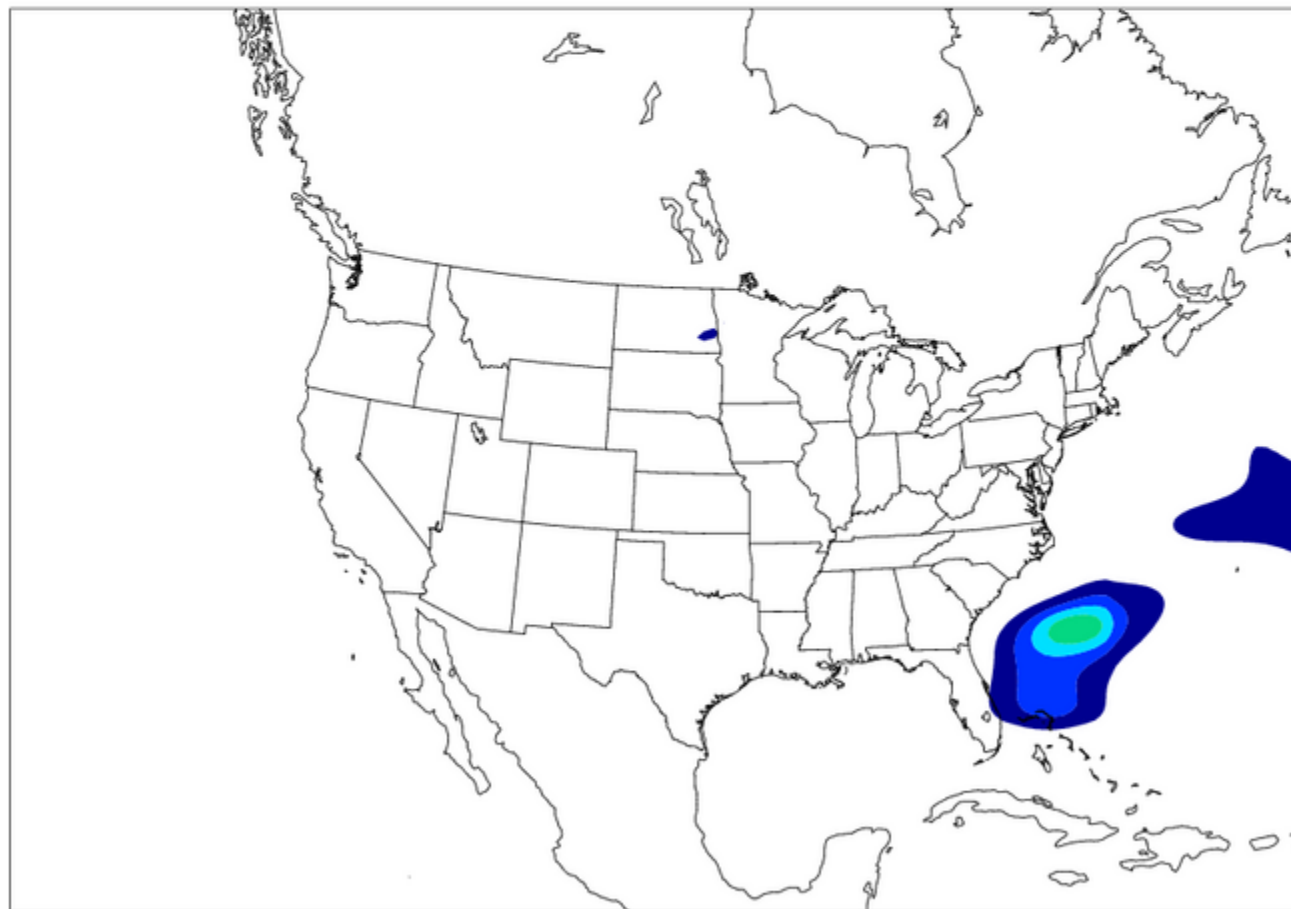
Links

.MMS

sky

Start < > Rock Zoom Set Animation Speed Refresh

NAM PM 2.5 Forecast Initialized 2008041300



Forecast Hour 29

National PM2.5 Map

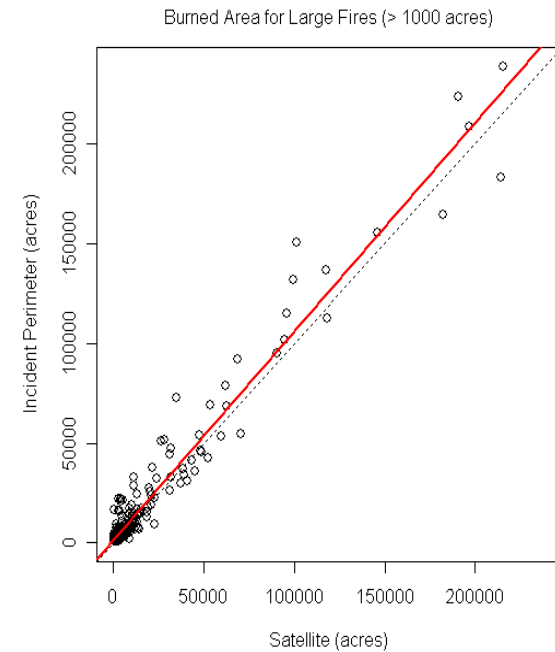
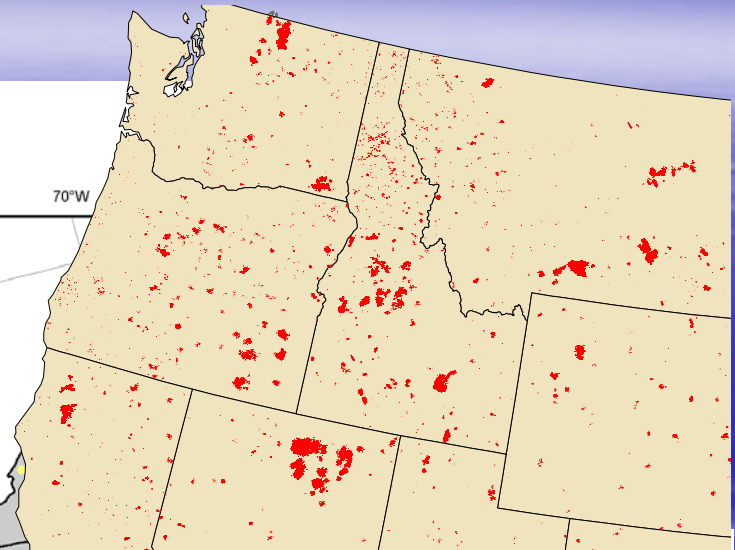
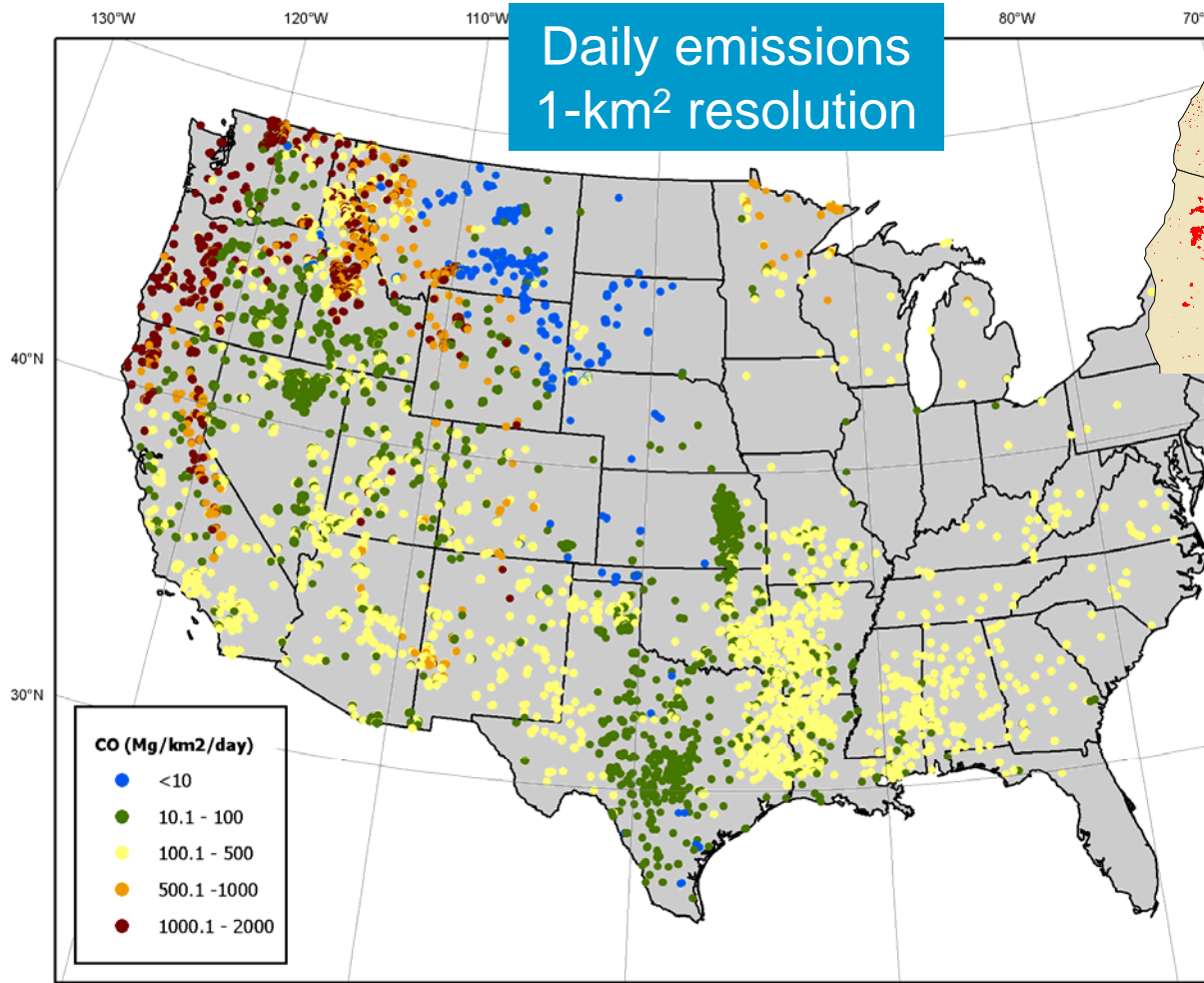
Source is estimated from mapped fuels and satellite detection of fires (usually around 100 acres or larger).

Agricultural burns often don't show up due to low intensity or short duration. But can be entered in manually for planning/forecasting if desired.

Dispersion is estimated using NWS forecasts, 12 km resolution.

Emissions Inventories from Remote Sensing

2006 Wildland Fire CO Emissions



International Co-operative Programme on Assessment and Monitoring of Air Pollution Effects on Forests

- Monitor spatial and temporal variation of forest condition in relation to stress factors including air pollution (large scale systematic network)
- Understand causal relations between stress factors including air pollution and forest condition (Level II plots - permanent observation plots)

F.S. Additions to ICP Network

- Existing strong European Program - more than 20 years of data, 800 sites
- Bring U.S. sites up to 21 (Level II) by equipping Experimental Forests
- Select a range of sites covering gradients of urban to rural, east to west, etc.

Measurements include:

- Critical loads and critical levels of deposition of pollutants
- Loads: acidity, nitrogen, sulphur
- Levels: ozone
- Meteorological parameters: wind speed, direction, solar radiation, temperature, humidity and precipitation

Experimental Forests & Ranges

- Experimental forest or range only
- ▲ Experimental watershed
- M MAB Biosphere Reserve
- * LTER site

