

# The Role of Protocols for Measuring, Monitoring, and Reporting GHG Reductions

Mike McCormick

Policy Director

*May 8, 2007*

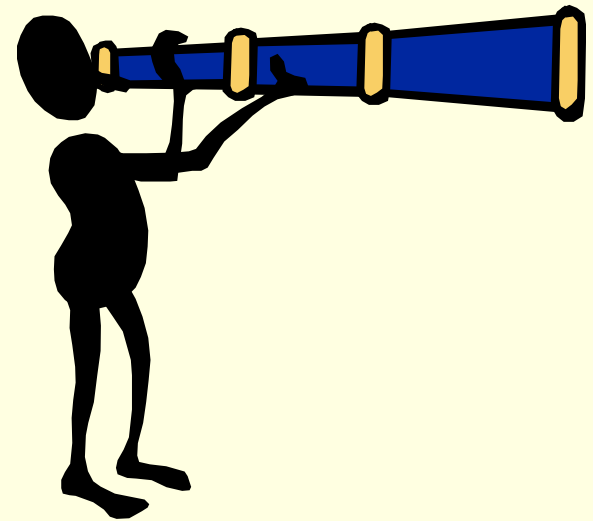


# Today's Presentation



- Intro to the Registry
- The role of protocols to measure, monitor, and report GHG reductions
- How reduction credits are used in a Cap & Trade and Voluntary program
- Preview of the Registry's Livestock Project Protocol

# Introduction to the Registry





# Background on the Registry

- Established as a business initiative
- Public/private partnership created by state legislation in 2000
  - Create a GHG accounting standard
  - Companies can establish a state-recognized baseline
  - Encourage voluntary public reporting and early actions for reduction
  - Board represents business, government, NGOs
- Define a “standard of excellence” in California

# Registry Tools



- General Reporting Protocol
  - An operational handbook based on WRI/WBCSD guidelines
- Industry-Specific Protocols
- GHG Reduction Project Protocols
- Certification Protocols
  - Vital for voluntary reporting
- CARROT: An Online Reporting Tool
  - [www.climateregistry.org/CARROT](http://www.climateregistry.org/CARROT)



# Role of Protocols



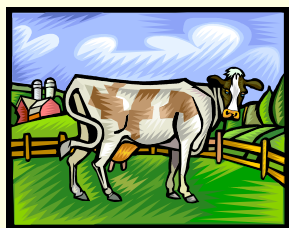
## ■ Two types

- Inventory protocols – footprint, snapshot
- Project protocols – reductions

## ■ Project Protocols

- Necessary for carbon transactions
- A tool to provide the means to determine the impact of a GHG emissions reduction activity
- To demonstrate the validity of project reductions – real, surplus, & verifiable

# GHG Emissions Cap



GHG Emissions Cap = 100

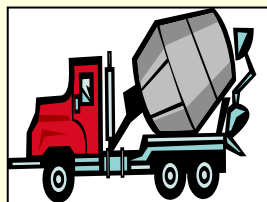
Metric Tonne

Total Allowances =

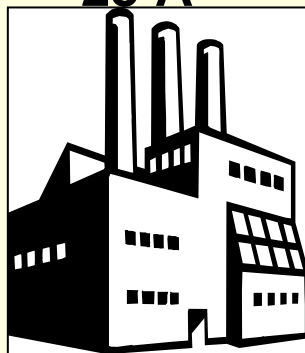
100

1 MT = 1 Allowance

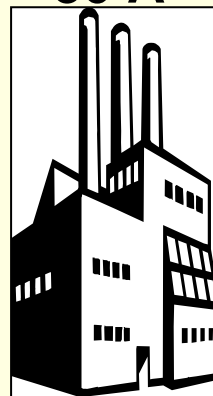
10 A



25 A



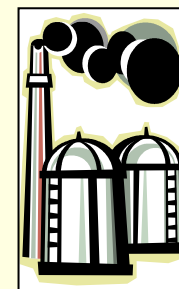
30 A



15 A



20 A



Emissions = 10MT

25MT

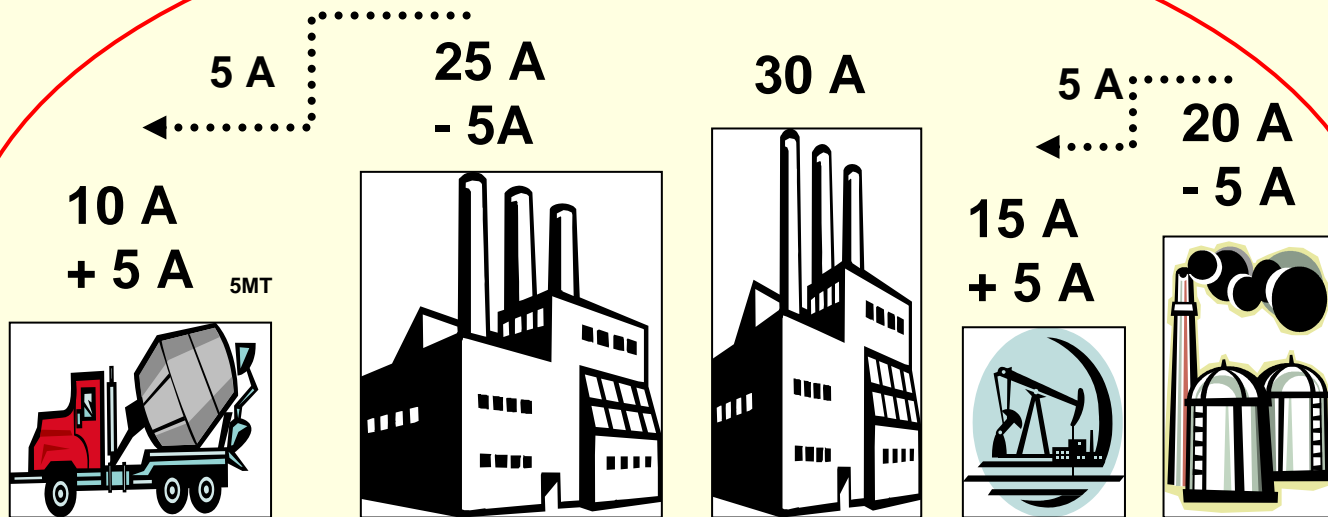
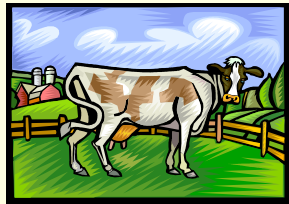
30MT

15MT

20 MT = 100 MT

# GHG Emissions Cap and Trade

GHG Cap = 100 MT  
Allowances = 100



Emissions = 15MT

20MT

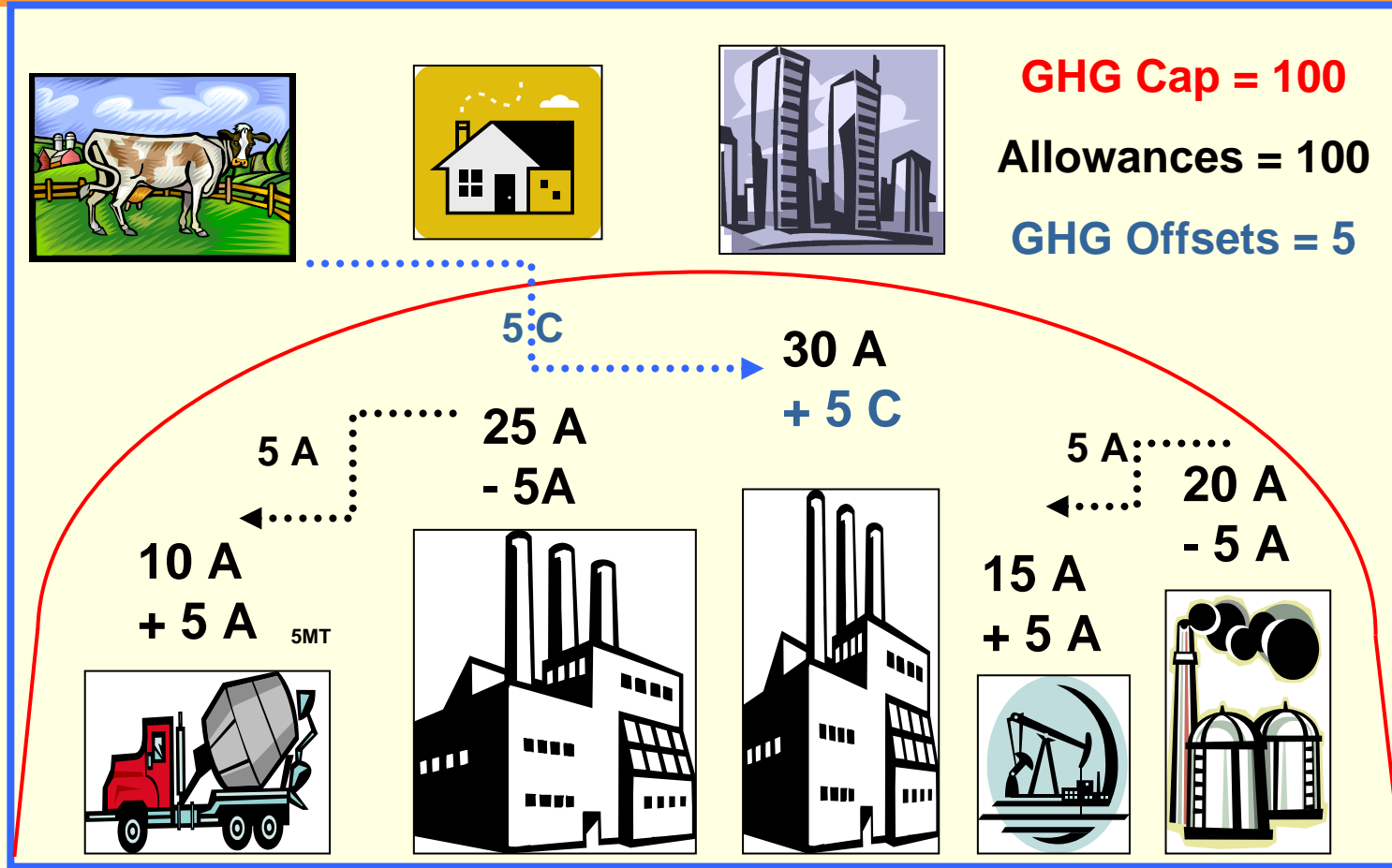
30MT

20MT

15 MT = 100 MT



# Cap and Trade + Offsets

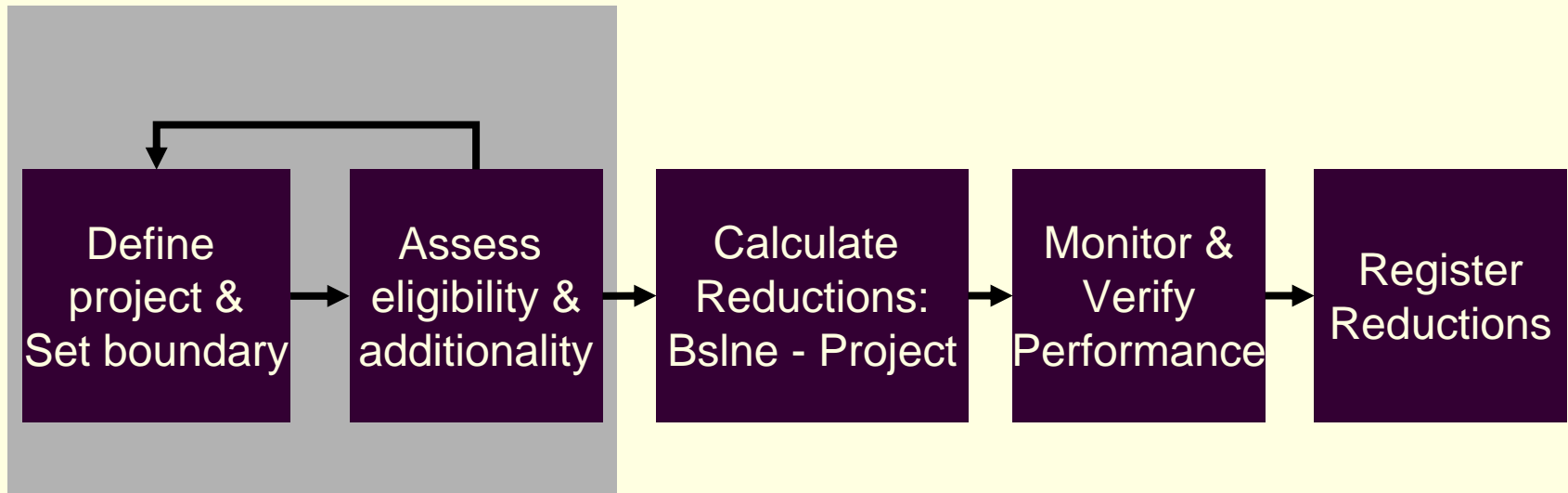


Emissions = 15MT      20MT      35MT      20MT      15 MT = 105 MT

# Principles Underpinning the Project Protocol

- Environmental Integrity
  - Fulfill “additionality” requirements
  - Credit only measurable reductions
- Transparency
  - Support third-party data review
  - Minimize judgment calls
- Consistency
  - Provide prescriptive guidance
- Practicality
  - Use a benchmark, program-wide approach

# Flow of Steps in a Project Protocol



Initial screen for environmental integrity before substantial investment by developer

Additionality assessed with a top-down approach & is separate from the baseline assessment

Quantification uses credible, practical, and flexible approaches, and uses top-down approaches if possible

# The Livestock Project Protocol



- Project activity = install biogas control system
- Scope = direct emissions from manure management
- Eligibility = projects that install control systems in CA and the U.S. will be eligible
  - Biogas control devices not common practice and not explicitly mandated under current regulations.
- Quantitative procedures
  - Emission factor-based calculation for baseline
  - Measurement based estimates for project emissions

# Contact Information



Mike McCormick

Policy Director

[mike@climateregistry.org](mailto:mike@climateregistry.org)

California Climate Action Registry

515 S. Flower St.

Suite 1640

Los Angeles, CA 90071

213-891-1444