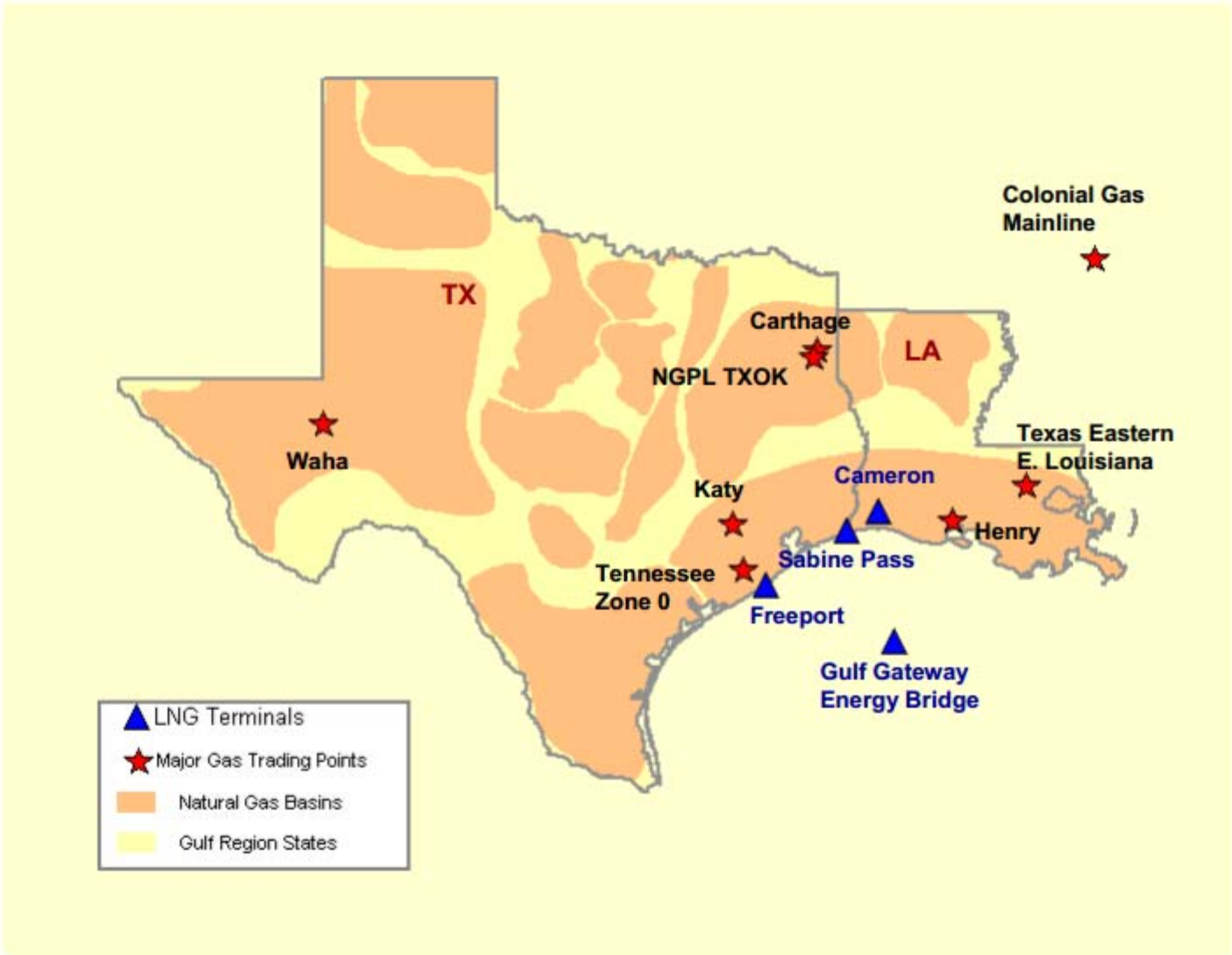


# Gulf Natural Gas Region

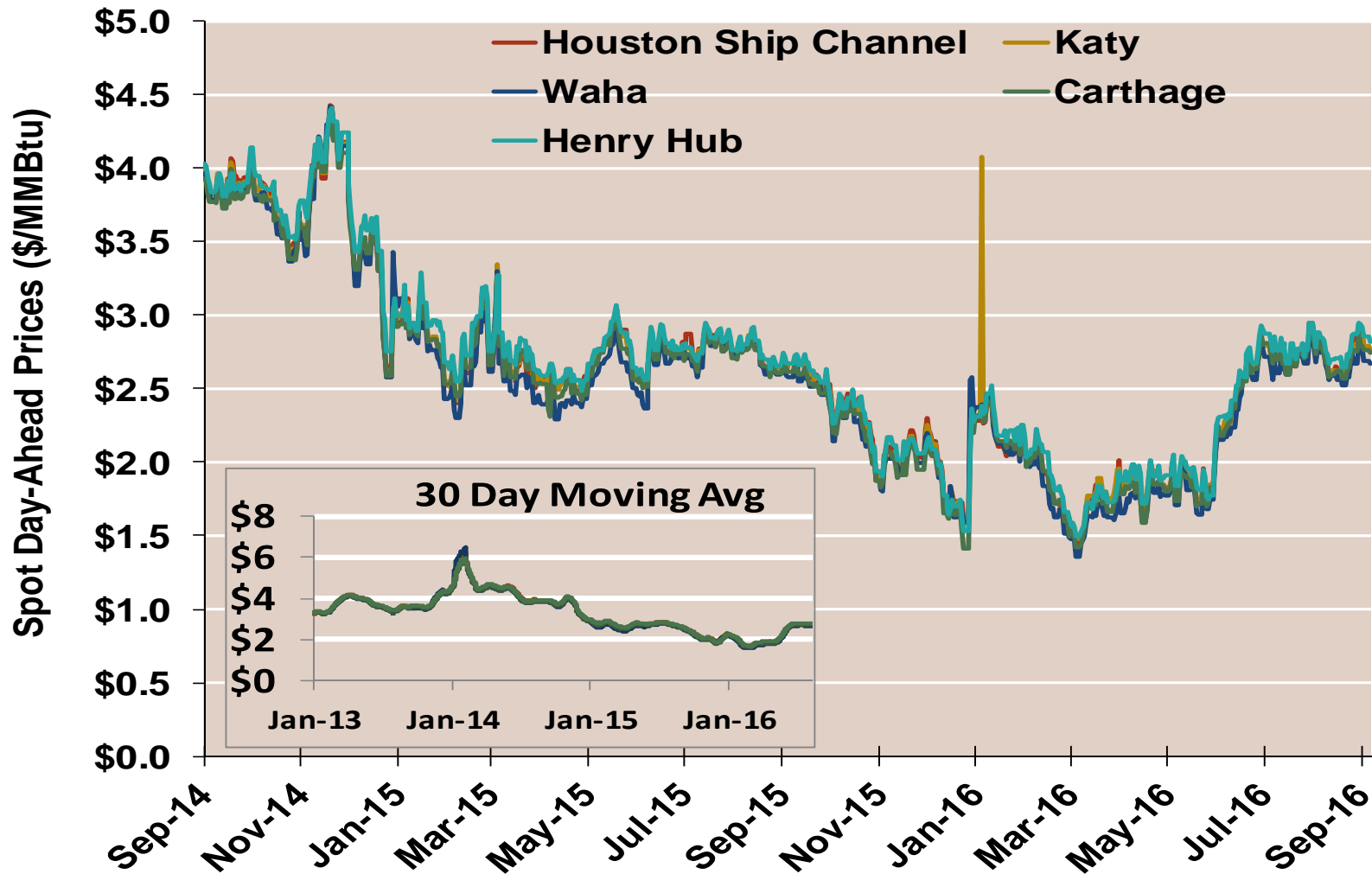


## Gulf Day-Ahead Prices Averaged Annually/Seasonally

	Average Day Ahead Prices (\$/MMBtu)	Houston Ship Chnl	Katy Texas	Waha Hub	Carthage TX	Henry Hub
<b>2013</b>	<b>Annual</b>	3.70	3.70	3.67	3.66	<b>3.72</b>
	<b>Summer</b>	3.75	3.74	3.69	3.69	<b>3.76</b>
	<b>Winter 2013/2014</b>	4.60	4.62	4.66	4.52	<b>4.61</b>
<b>2014</b>	<b>Annual</b>	4.30	4.31	4.28	4.23	<b>4.32</b>
	<b>Summer</b>	4.17	4.16	4.10	4.09	<b>4.18</b>
	<b>Winter 2014/2015</b>	3.11	3.12	3.07	3.11	<b>3.21</b>
<b>2015</b>	<b>Annual</b>	2.57	2.56	2.50	2.53	<b>2.60</b>
	<b>Summer</b>	2.65	2.64	2.57	2.60	<b>2.67</b>
	<b>Winter 2015/2016</b>	1.95	1.97	1.90	1.91	<b>1.97</b>
<b>2016 YTD</b>	<b>Annual</b>	2.04	2.06	1.98	2.03	<b>2.10</b>
	<b>Summer</b>	2.15	2.15	2.08	2.13	<b>2.21</b>
	<b>Winter 2016/2017</b>					

Notes:

## Gulf Day-Ahead Prices

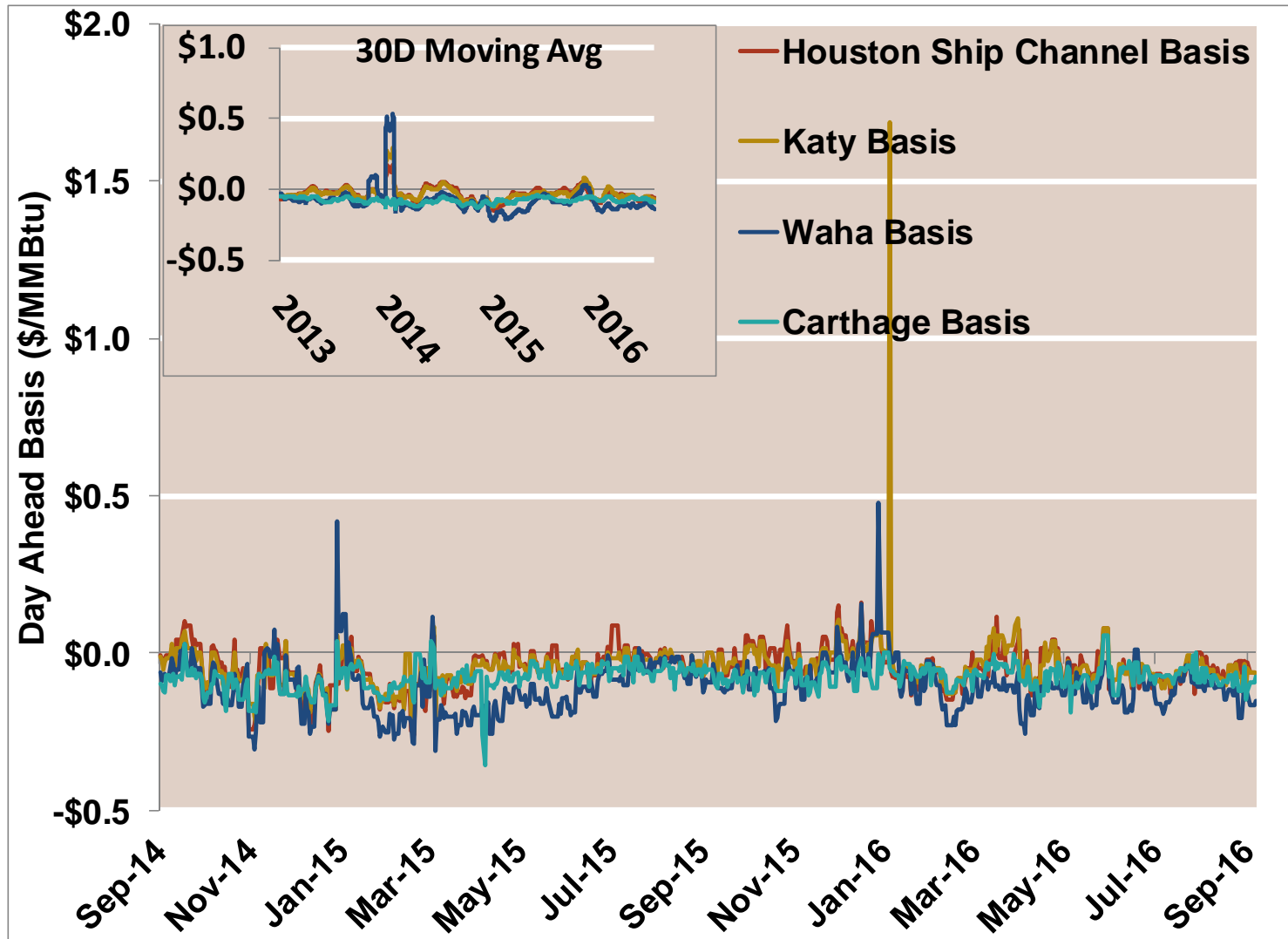


Notes:

Source: Derived from Bloomberg ICE data

Updated Sep-2016

## Gulf Day-Ahead Basis

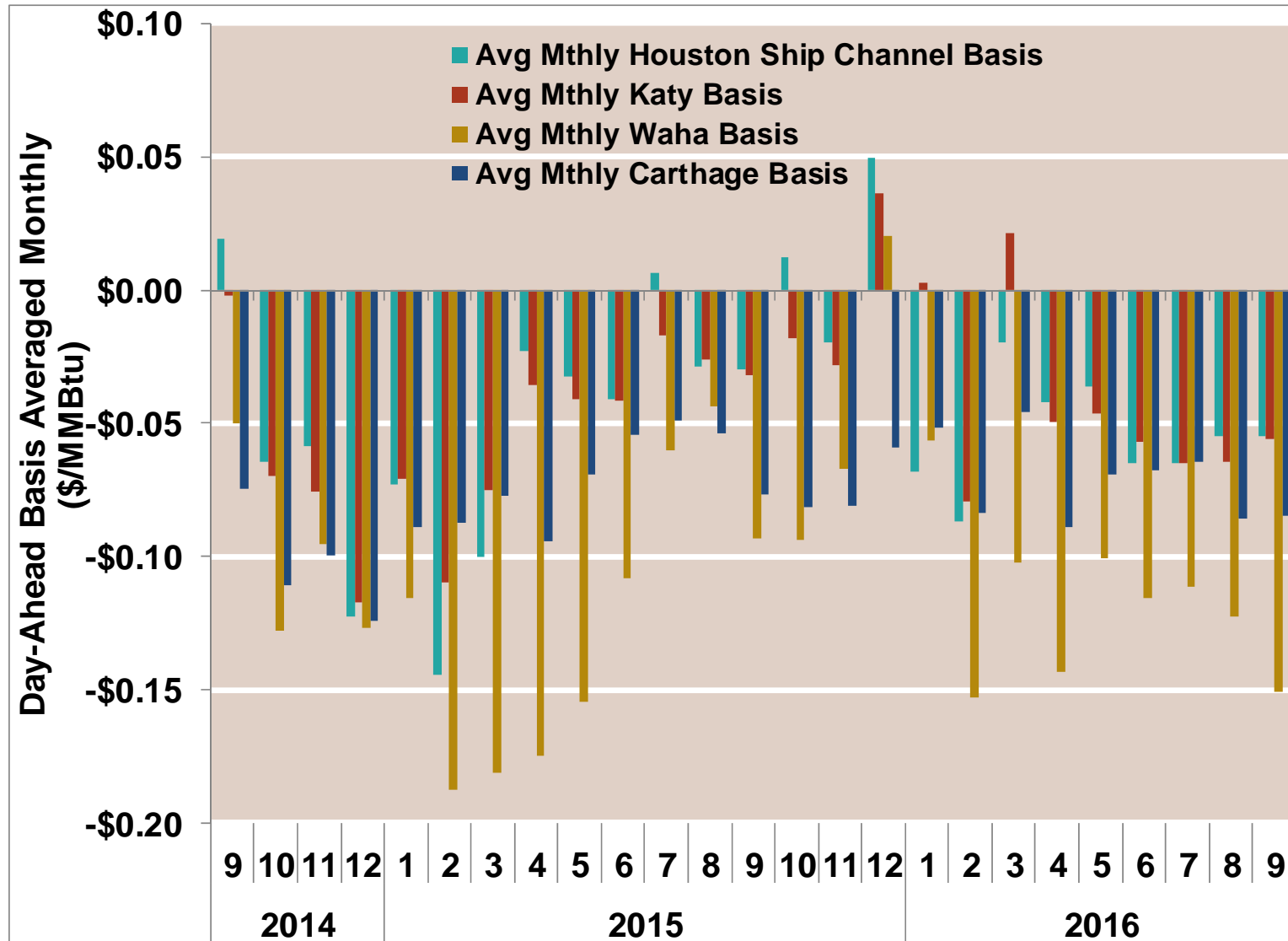


Notes:

Source: Derived from Bloomberg ICE data

Updated Sep-2016

## Gulf Day-Ahead Basis To Henry Hub Averaged Monthly

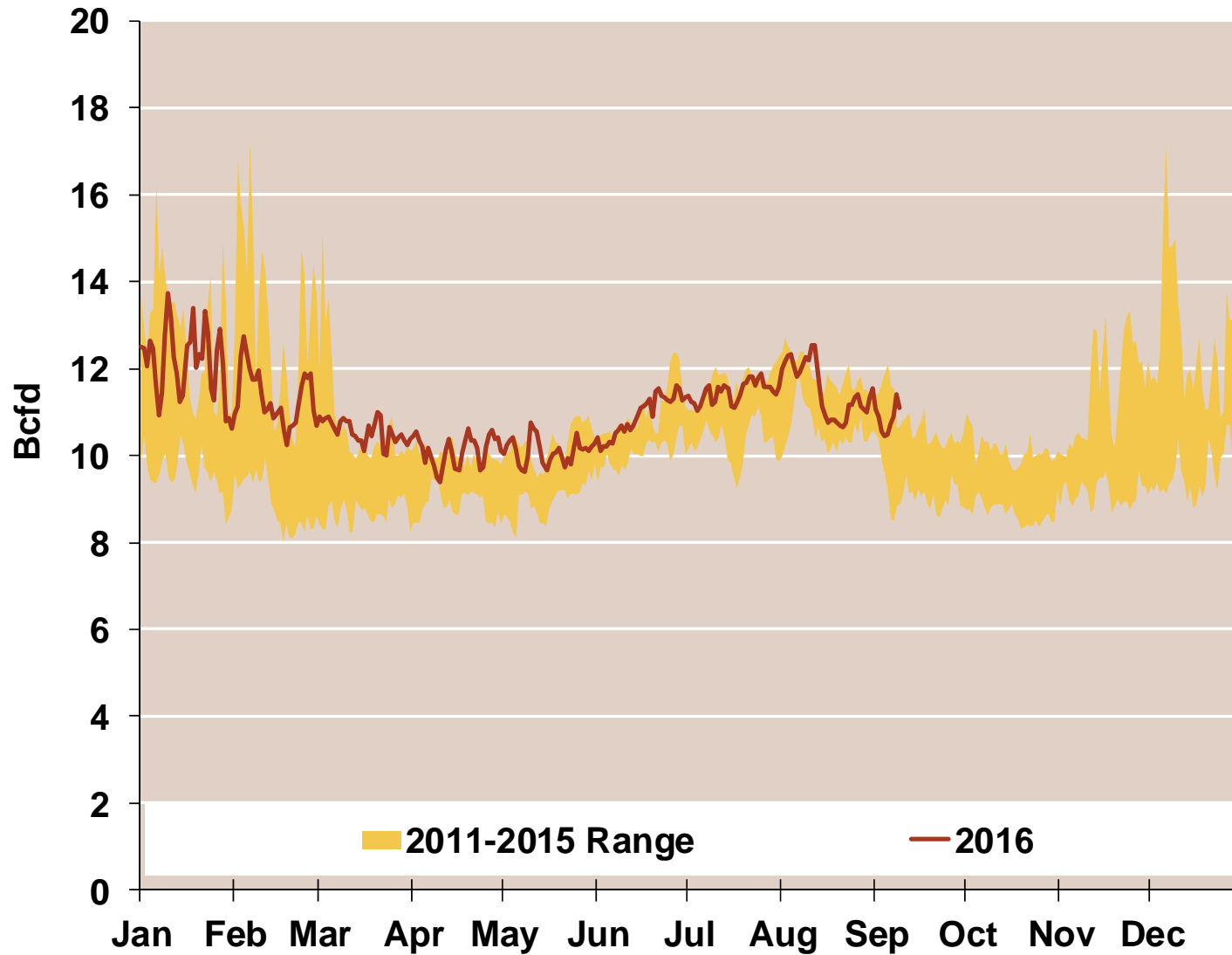


Notes:

Source: Derived from Bloomberg ICE data

Updated Sep-2016

## Daily Texas Natural Gas Demand All Sectors



## Texas Natural Gas Consumption for Power Generation

