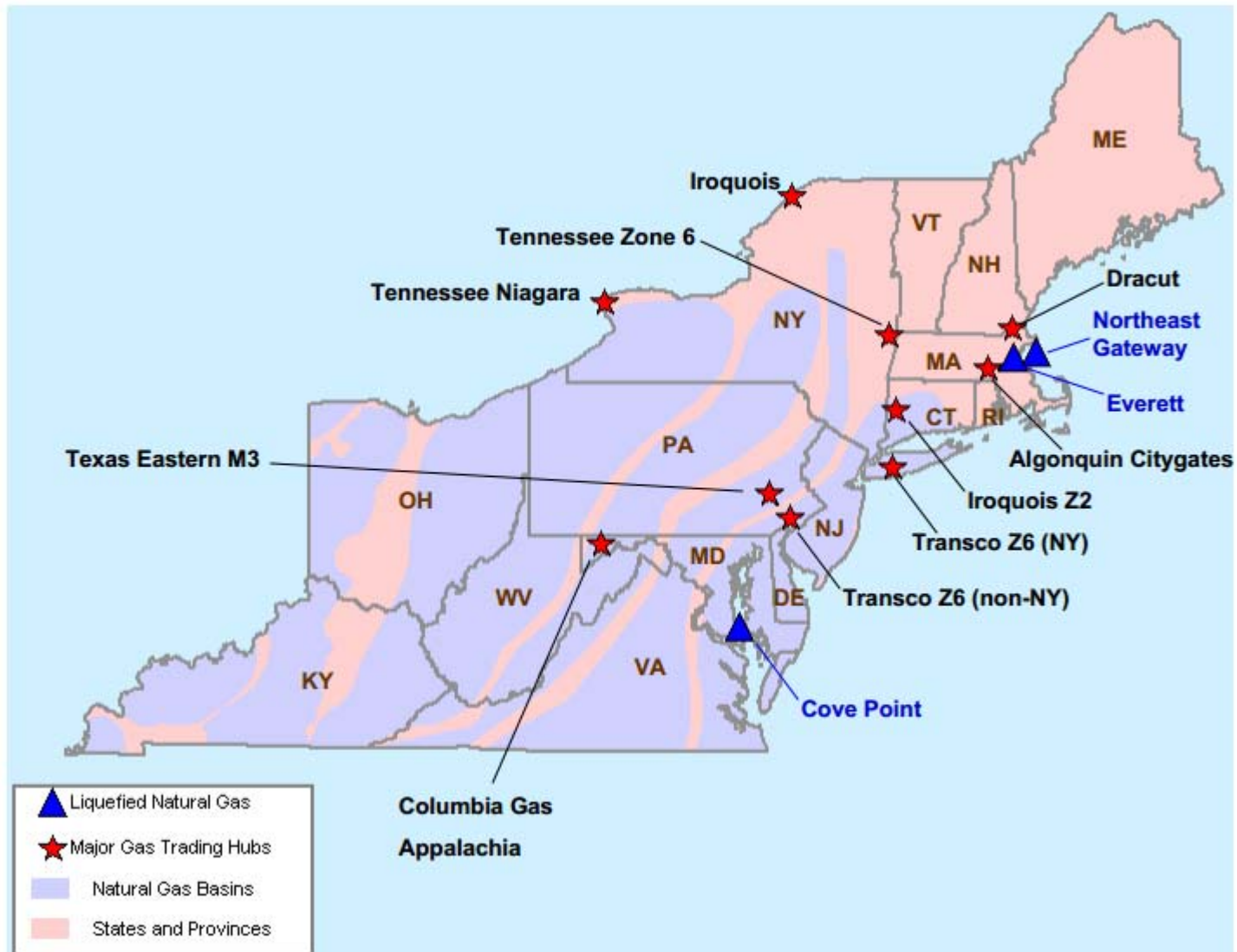


Northeast Natural Gas Region

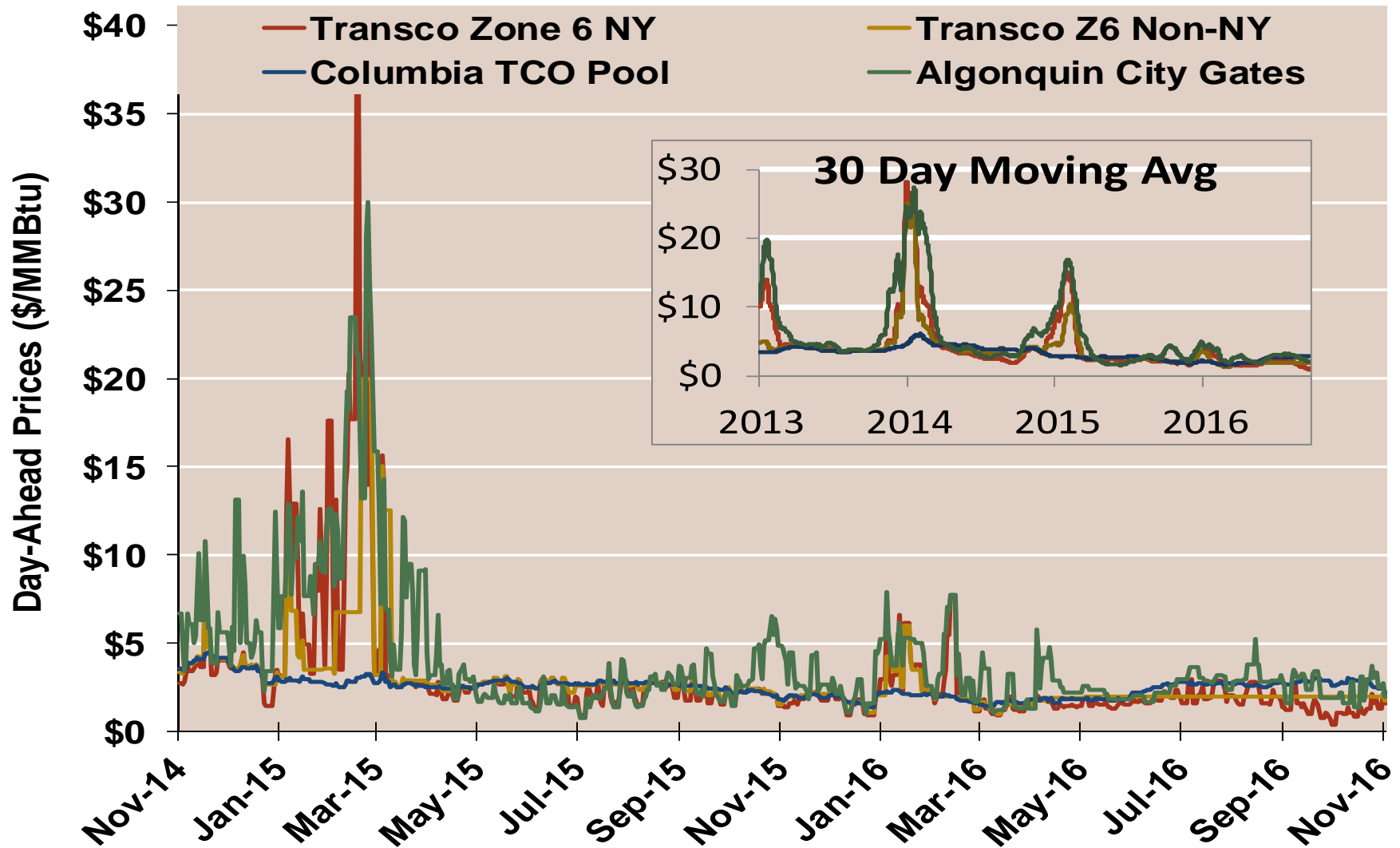


Northeast Day-Ahead Natural Gas Prices Averaged Annually/Seasonally

	Average Day Ahead Prices (\$/MMBtu)	Algonquin Citygates	Transco Zone 6 NY	Transco Zone 6 Non-NY	Columbia Appalachia	Henry Hub
2013	Annual	6.95	5.11	4.03	3.72	3.72
	Summer	4.24	3.92	3.84	3.77	3.76
	Winter 2013/2014	15.76	11.40	9.66	4.60	4.61
2014	Annual	7.95	6.22	5.98	4.30	4.32
	Summer	3.50	2.89	3.53	4.14	4.18
	Winter 2014/2015	9.17	6.68	5.25	3.15	3.21
2015	Annual	4.71	3.77	3.33	2.51	2.60
	Summer	2.51	2.25	2.53	2.58	2.67
	Winter 2015/2016	3.18	2.26	2.11	1.86	1.97
2016 YTD	Annual	2.85	1.95	2.03	2.26	2.38
	Summer	2.60	1.66	1.93	2.43	2.55
	Winter 2016/2017	1.95	1.60	1.72	2.19	2.53

Notes:

Northeast Day-Ahead Prices

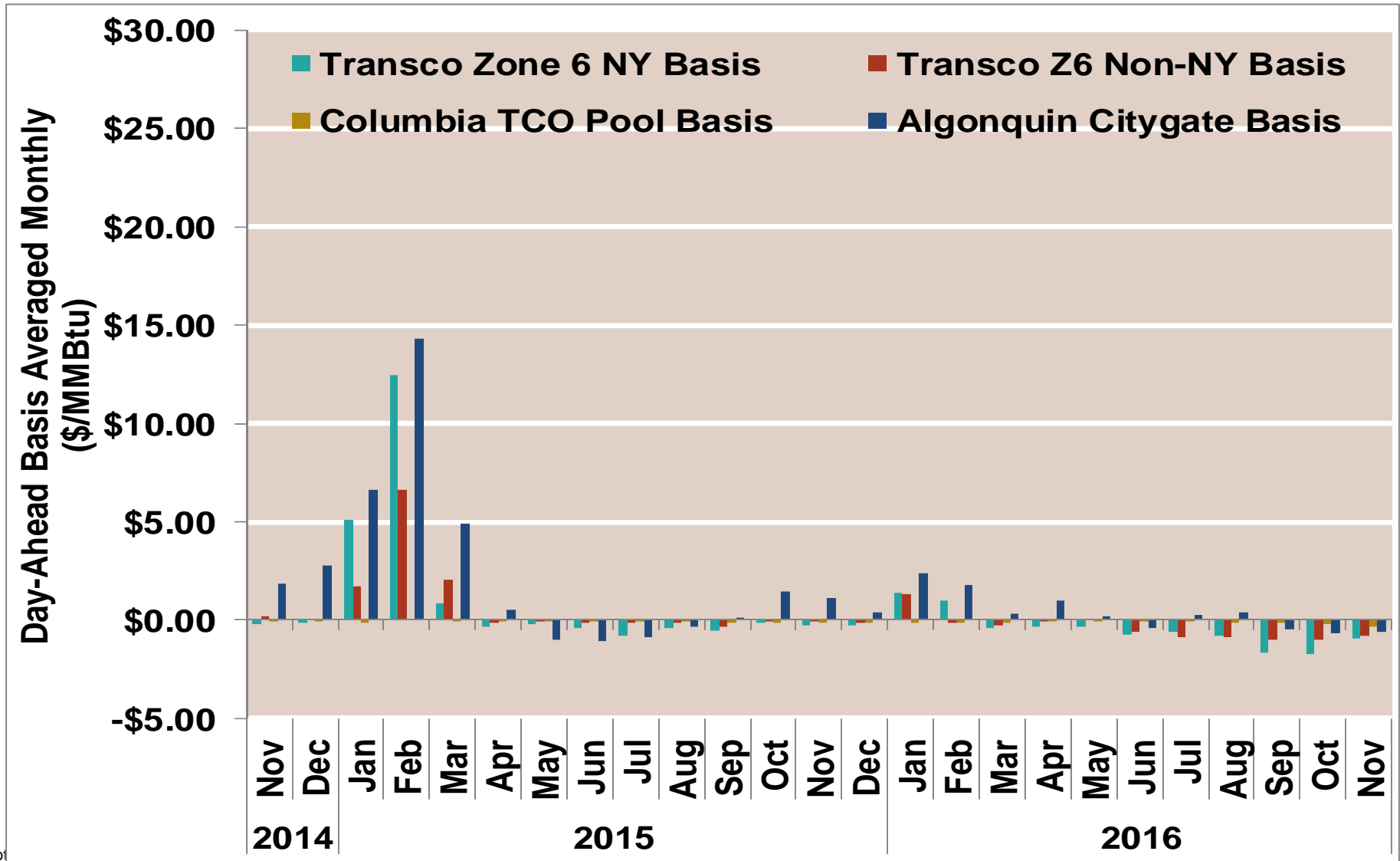


Notes:

Source: Derived from Bloomberg ICE data

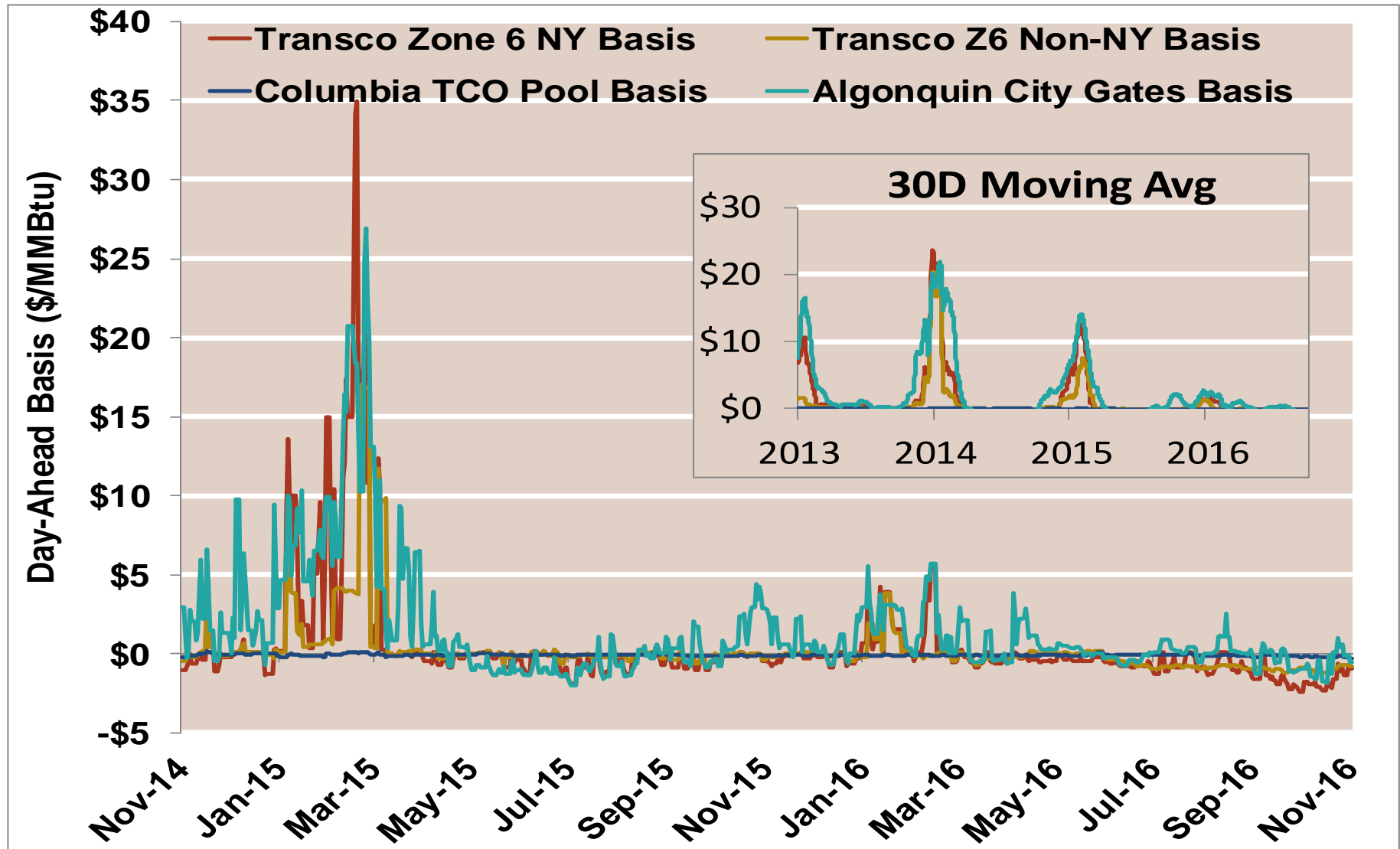
Updated 11/22/2016

Northeast Day-Ahead Basis To Henry Hub Averaged Monthly



Note

Northeast Day-Ahead Basis

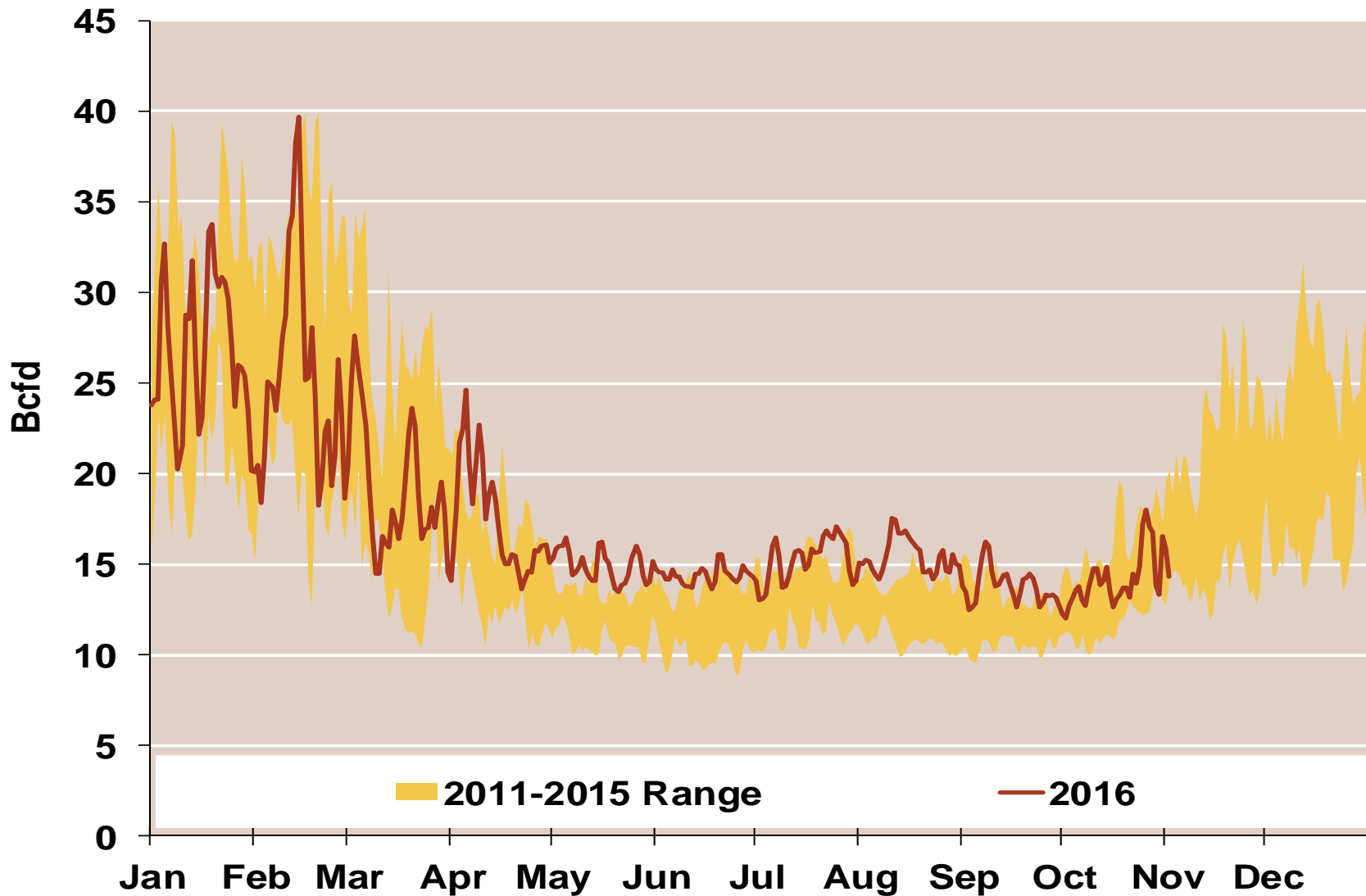


Notes:

Source: Derived from Bloomberg ICE data

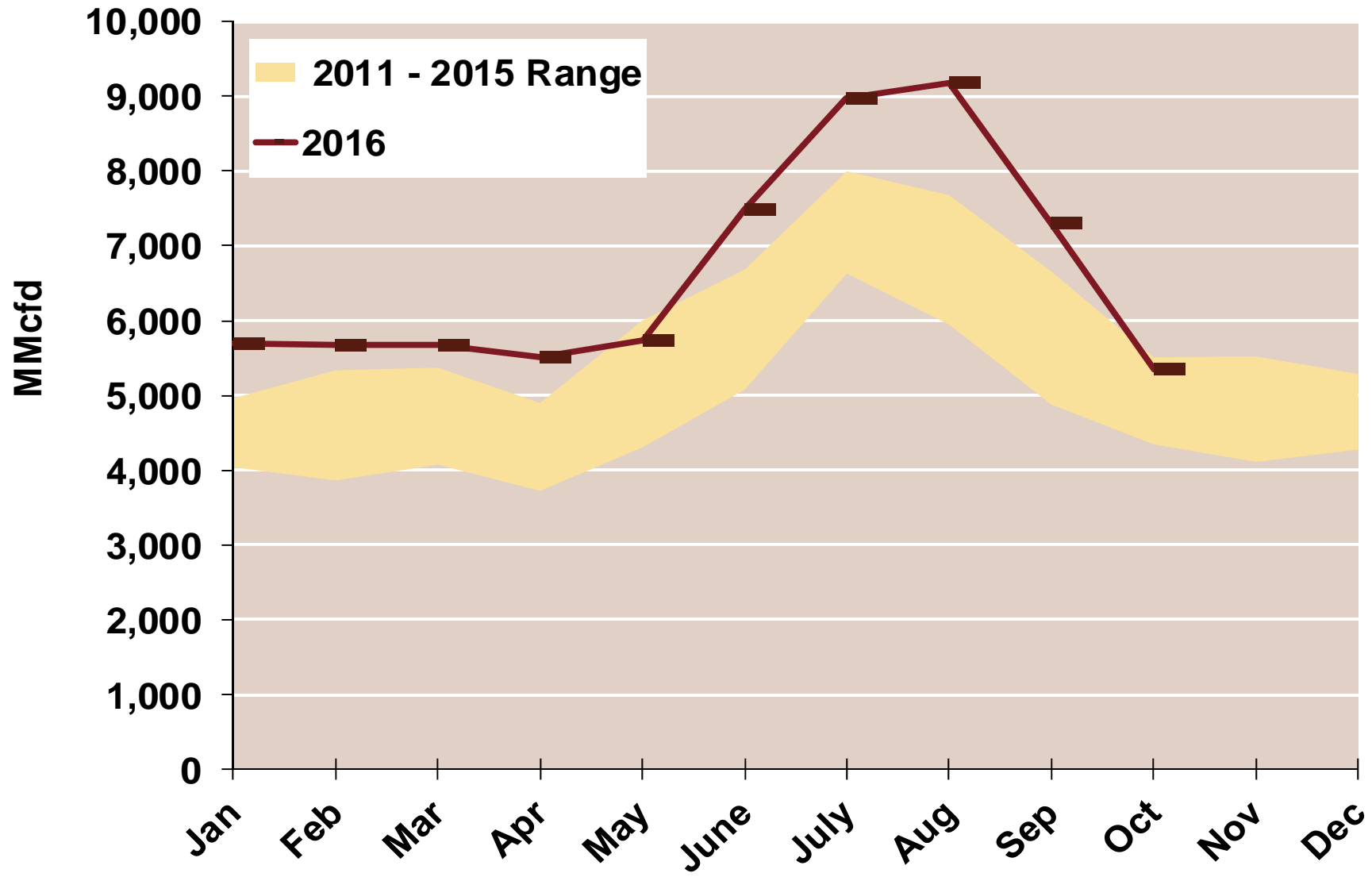
Updated 11/22/2016

Daily Northeast Natural Gas Demand All Sectors



Source: Derived from *Bentek Energy* data

Northeast Natural Gas Consumption for Power Generation



Source: Derived from *Bentek Energy* data

Updated:

October 2016