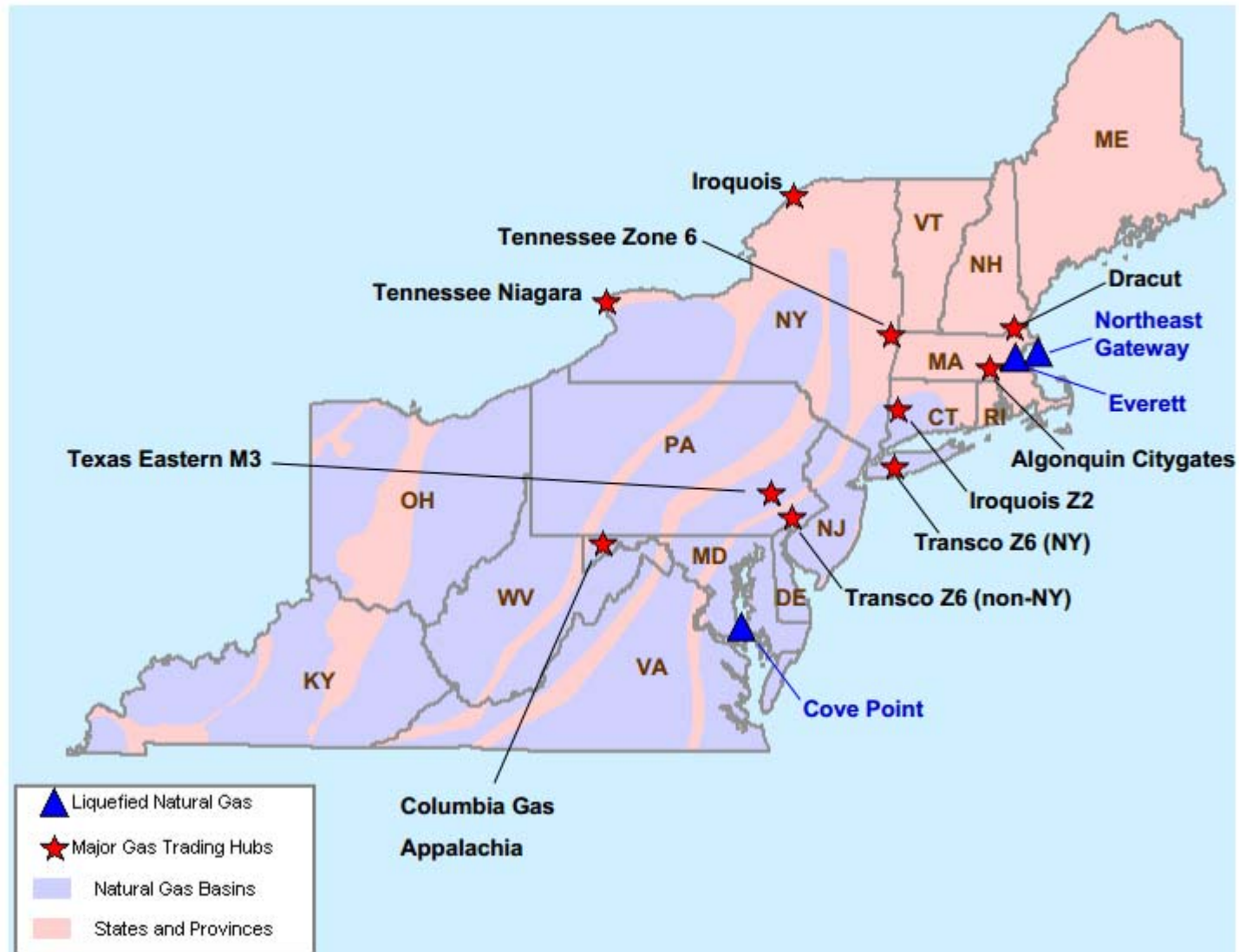


Northeast Natural Gas Region

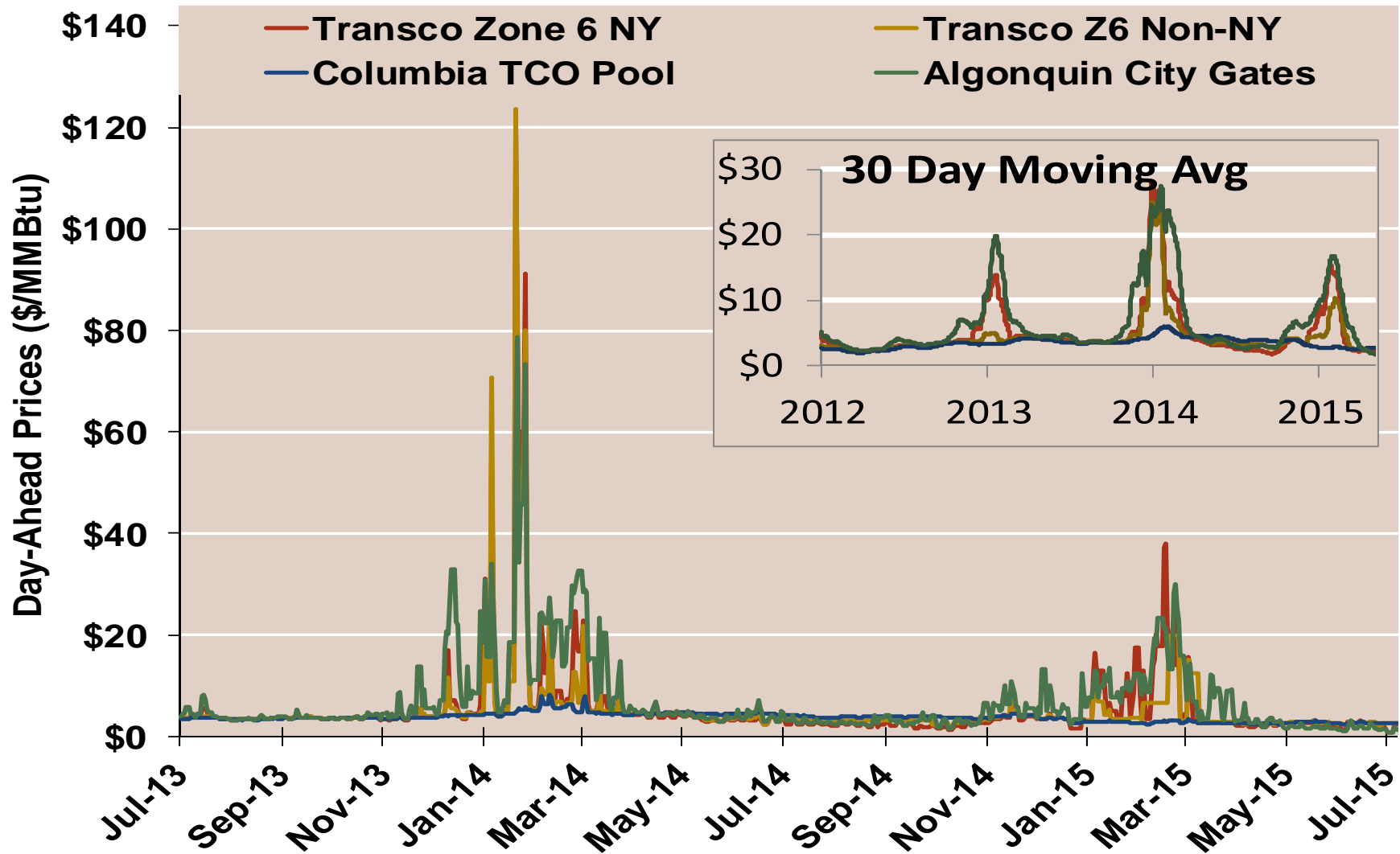


Northeast Day-Ahead Natural Gas Prices Averaged Annually/Seasonally

	Average Day Ahead Prices (\$/MMBtu)	Algonquin Citygates	Transco Zone 6 NY	Transco Zone 6 Non-NY	Columbia Appalachia	Henry Hub
2012	Annual	3.95	3.27	2.98	2.78	2.75
	Summer	3.25	2.86	2.83	2.71	2.69
	Winter 2012/2013	9.49	6.69	4.10	3.51	3.47
2013	Annual	6.95	5.11	4.03	3.72	3.72
	Summer	4.24	3.92	3.84	3.77	3.76
	Winter 2013/2014	15.76	11.40	9.66	4.60	4.61
2014	Annual	7.95	6.22	5.98	4.30	4.32
	Summer	3.50	2.89	3.53	4.14	4.18
	Winter 2014/2015	9.17	6.68	5.25	3.15	3.21
2015 YTD	Annual	7.36	5.97	4.63	2.71	2.79
	Summer	2.32	2.34	2.60	2.62	2.69
	Winter 2015/2016					

Notes:

Northeast Day-Ahead Prices

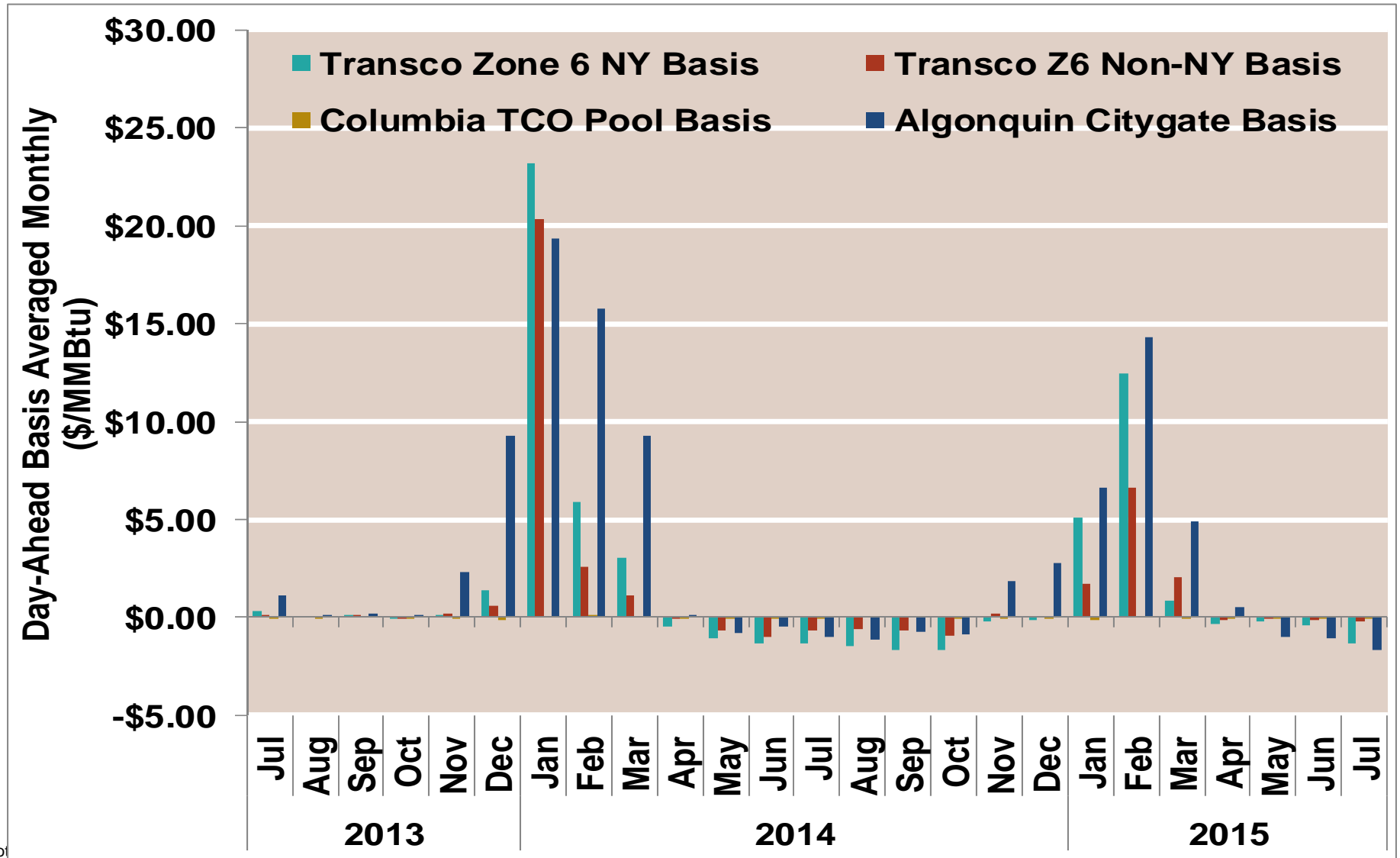


Notes:

Source: Derived from Bloomberg ICE data

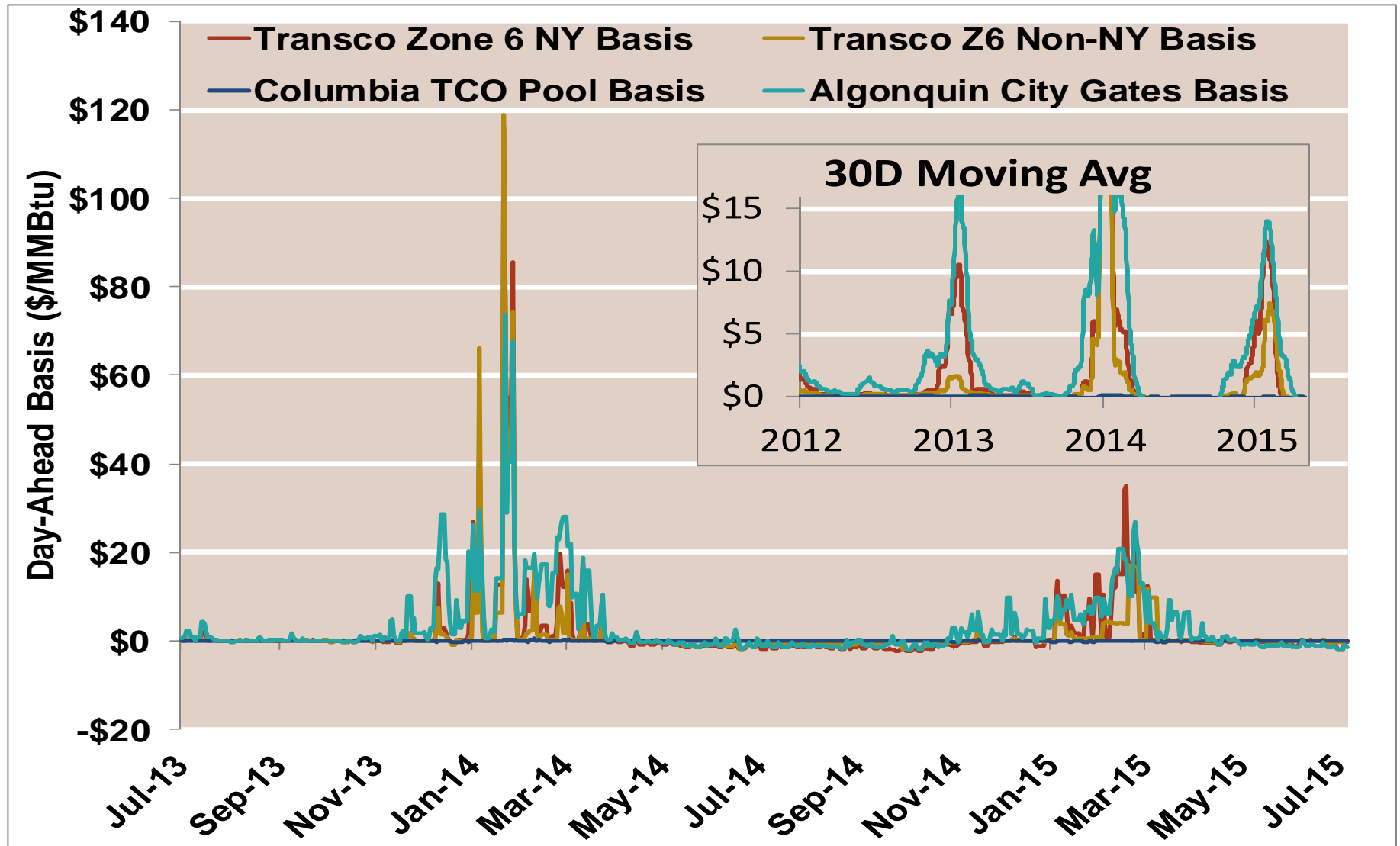
Updated 7/13/2015

Northeast Day-Ahead Basis To Henry Hub Averaged Monthly



Note

Northeast Day-Ahead Basis

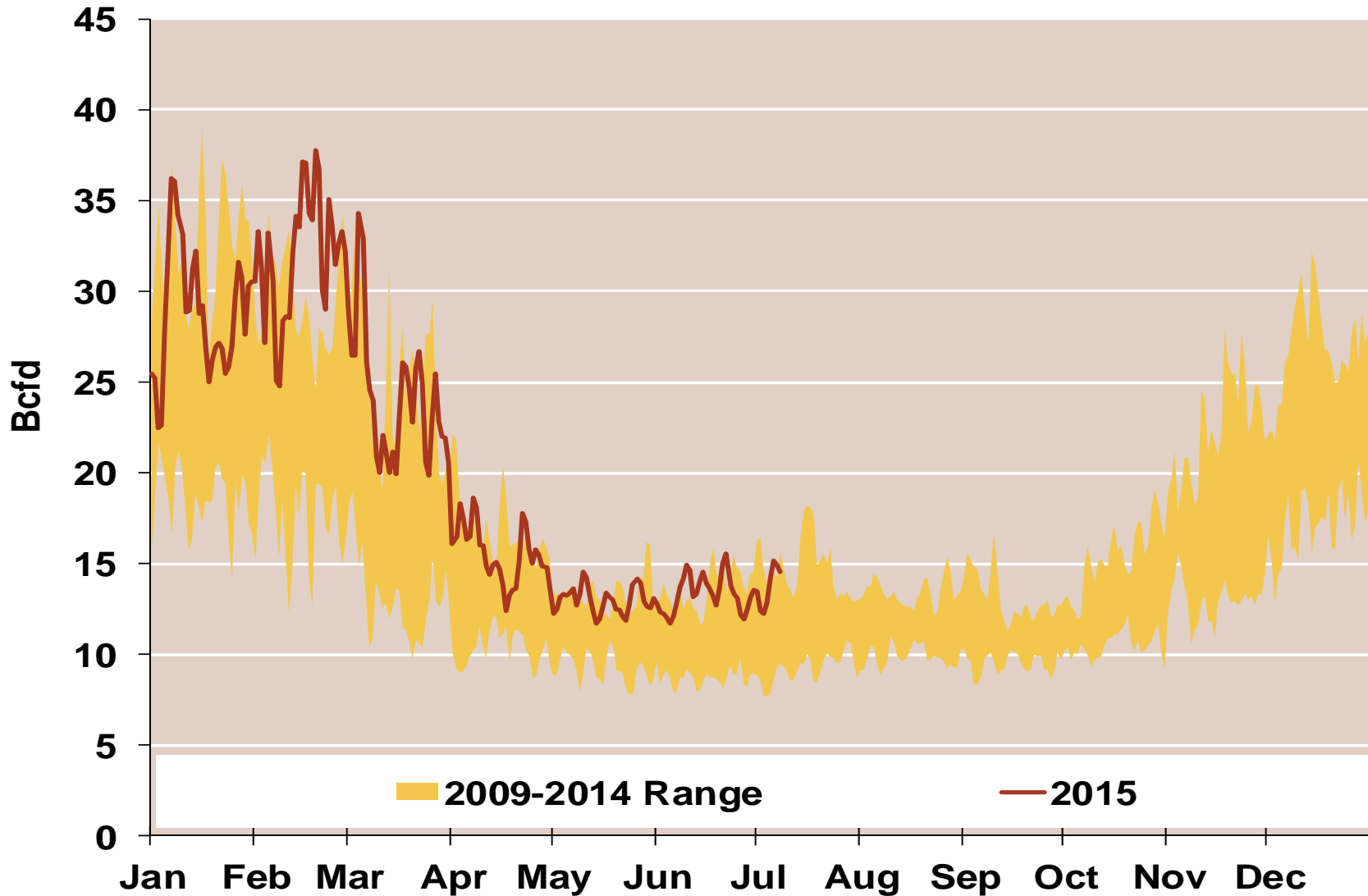


Notes:

Source: Derived from Bloomberg ICE data

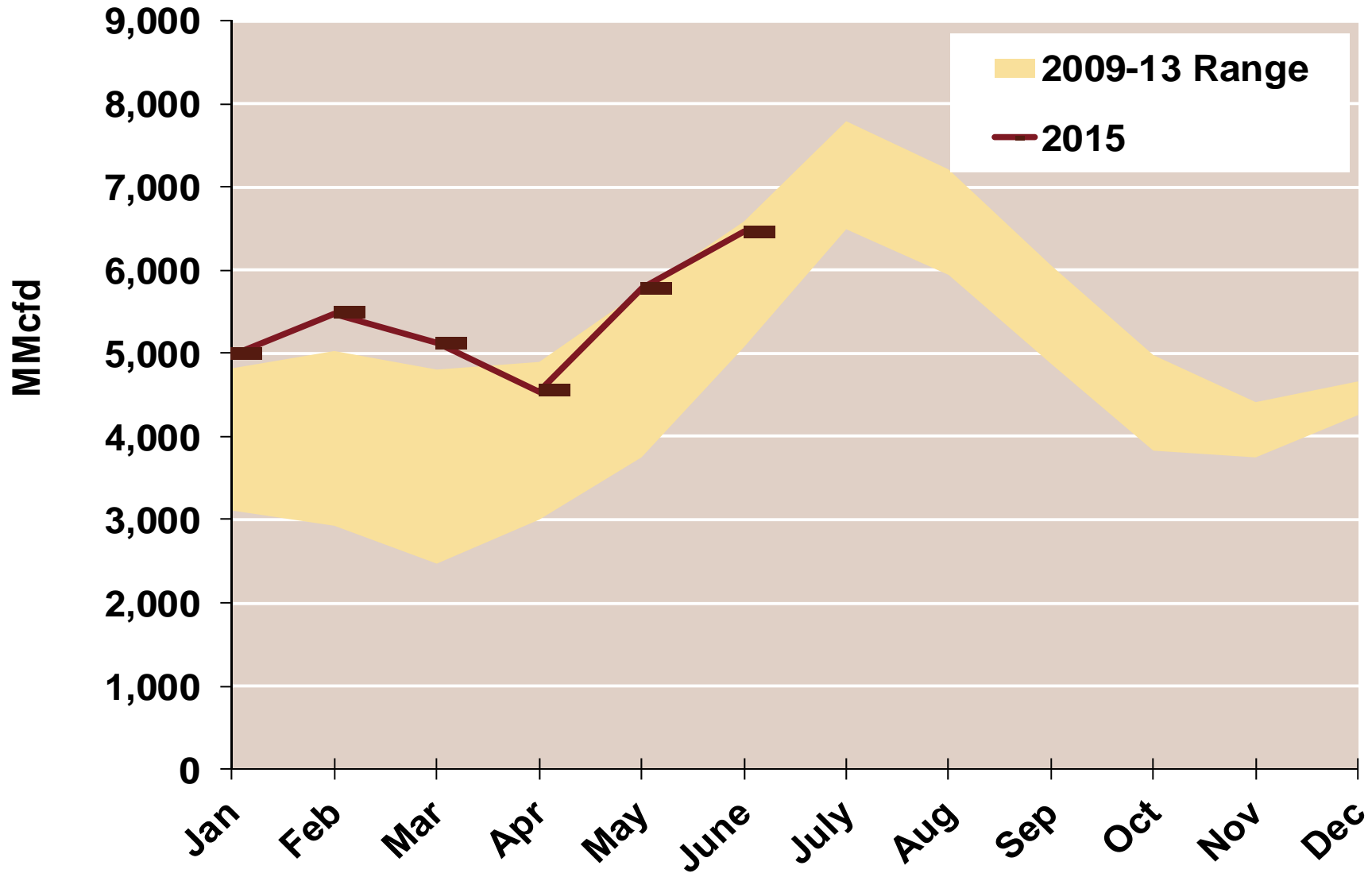
Updated 7/13/2015

Daily Northeast Natural Gas Demand All Sectors



Source: Derived from *Bentek Energy* data

Northeast Natural Gas Consumption for Power Generation



Source: Derived from *Bentek Energy* data