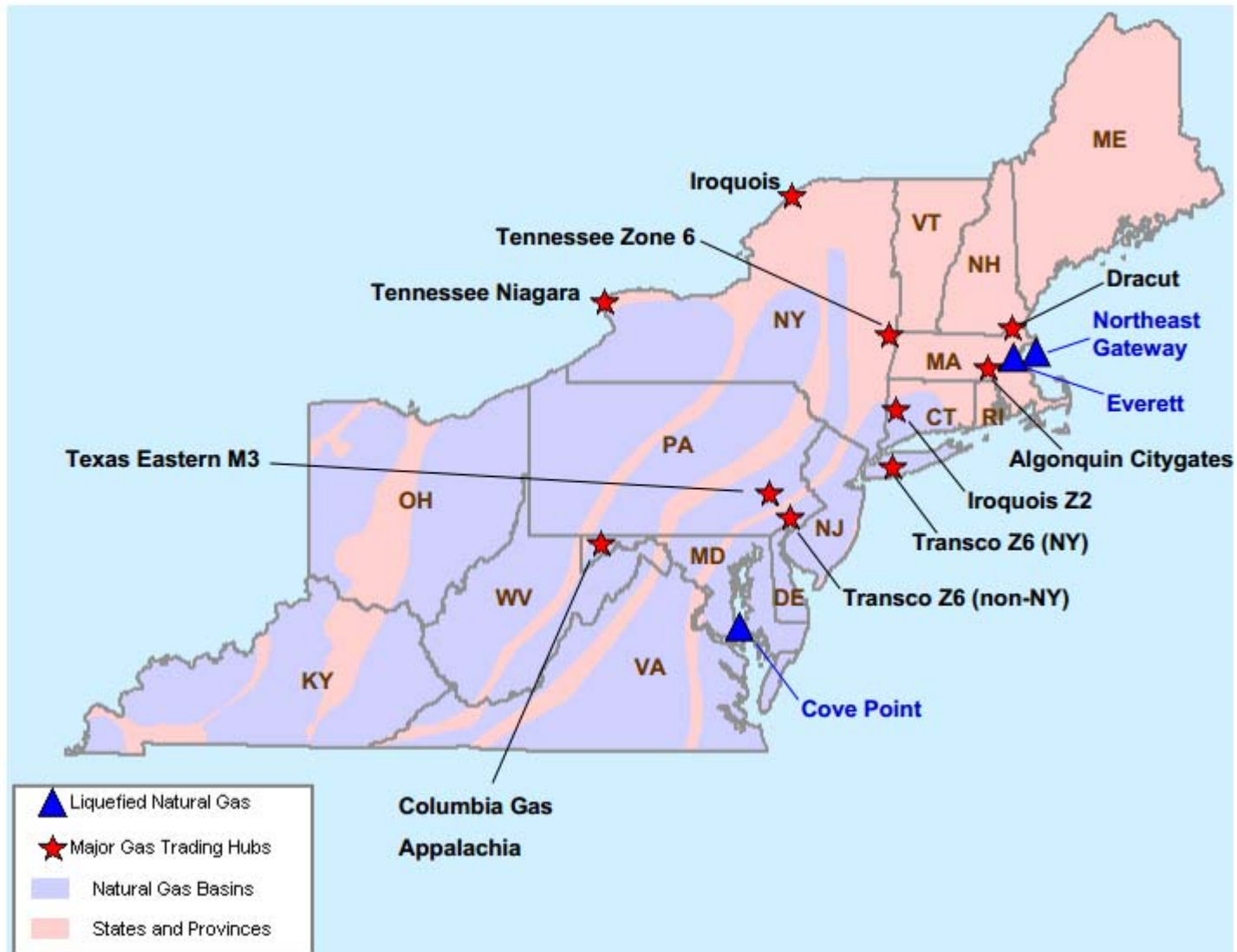


## Northeast Natural Gas Region

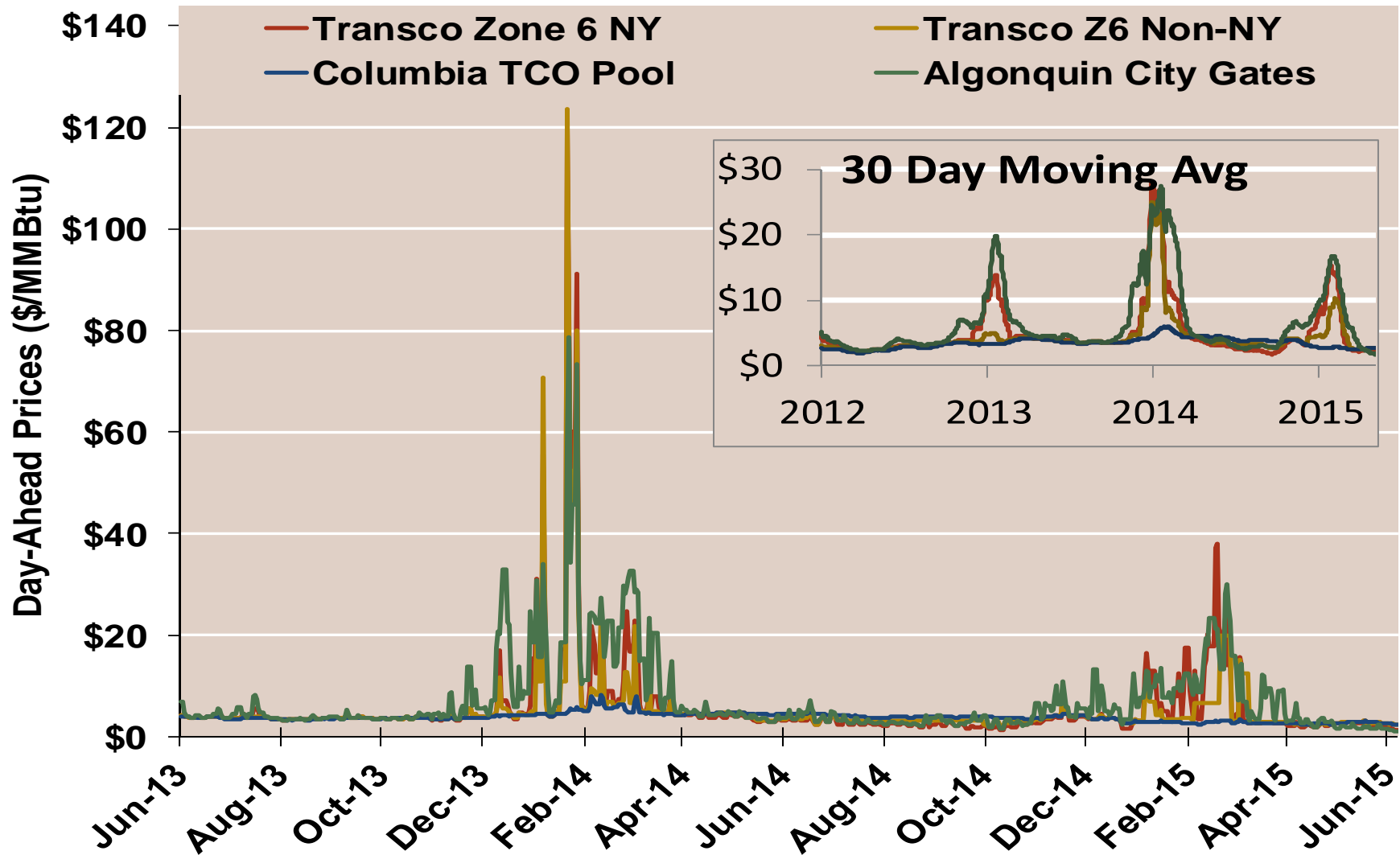


## Northeast Day-Ahead Natural Gas Prices Averaged Annually/Seasonally

	Average Day Ahead Prices (\$/MMBtu)	Algonquin Citygates	Transco Zone 6 NY	Transco Zone 6 Non-NY	Columbia Appalachia	Henry Hub
<b>2012</b>	<b>Annual</b>	3.95	3.27	2.98	2.78	<b>2.75</b>
	<b>Summer</b>	3.25	2.86	2.83	2.71	<b>2.69</b>
	<b>Winter 2012/2013</b>	9.49	6.69	4.10	3.51	<b>3.47</b>
<b>2013</b>	<b>Annual</b>	6.95	5.11	4.03	3.72	<b>3.72</b>
	<b>Summer</b>	4.24	3.92	3.84	3.77	<b>3.76</b>
	<b>Winter 2013/2014</b>	15.76	11.40	9.66	4.60	<b>4.61</b>
<b>2014</b>	<b>Annual</b>	7.95	6.22	5.98	4.30	<b>4.32</b>
	<b>Summer</b>	3.50	2.89	3.53	4.14	<b>4.18</b>
	<b>Winter 2014/2015</b>	9.17	6.68	5.25	3.15	<b>3.21</b>
<b>2015 YTD</b>	<b>Annual</b>	7.36	5.97	4.63	2.71	<b>2.79</b>
	<b>Summer</b>	2.32	2.34	2.60	2.62	<b>2.69</b>
	<b>Winter 2015/2016</b>					

Notes:

## Northeast Day-Ahead Prices

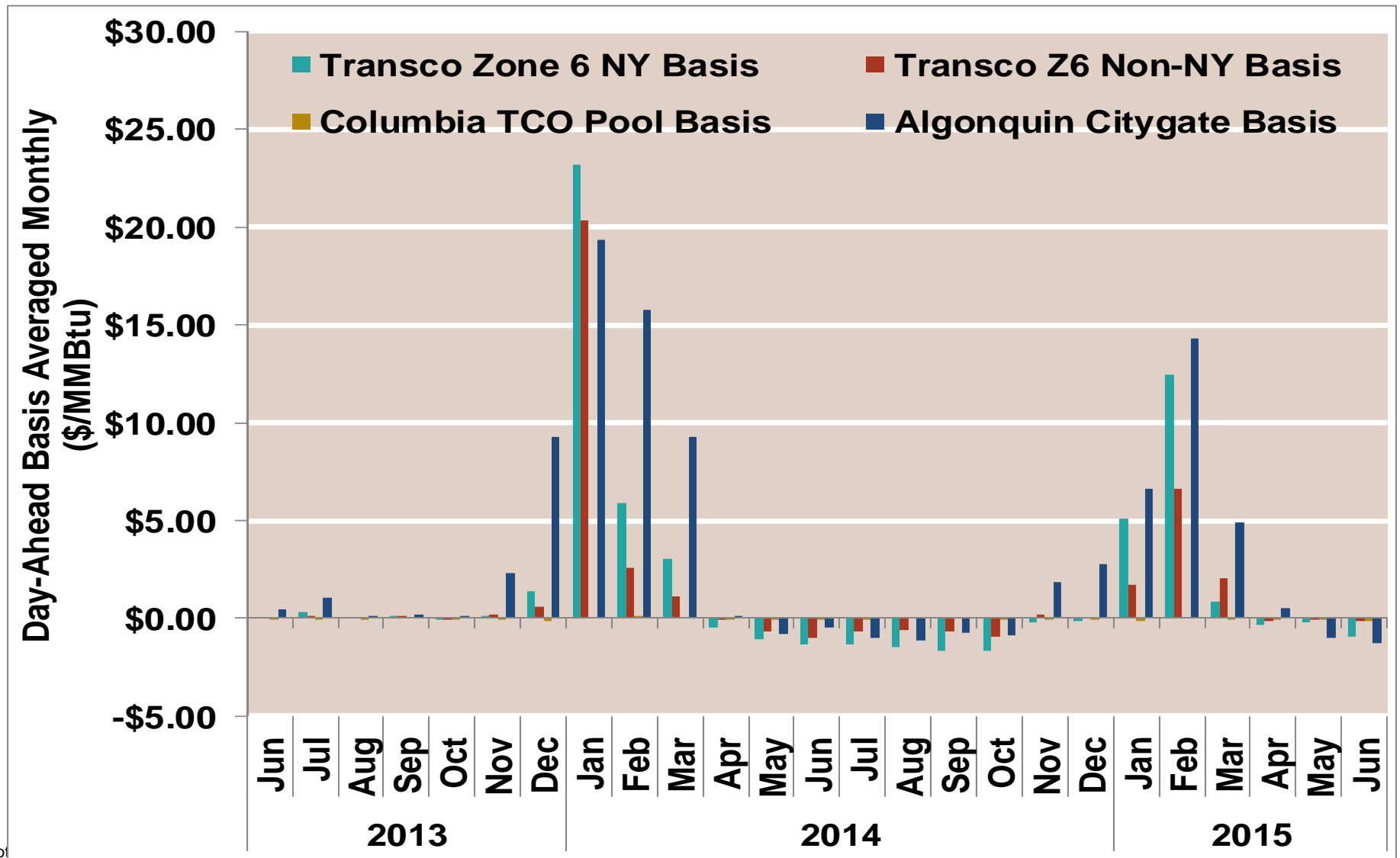


Notes:

Source: Derived from Bloomberg ICE data

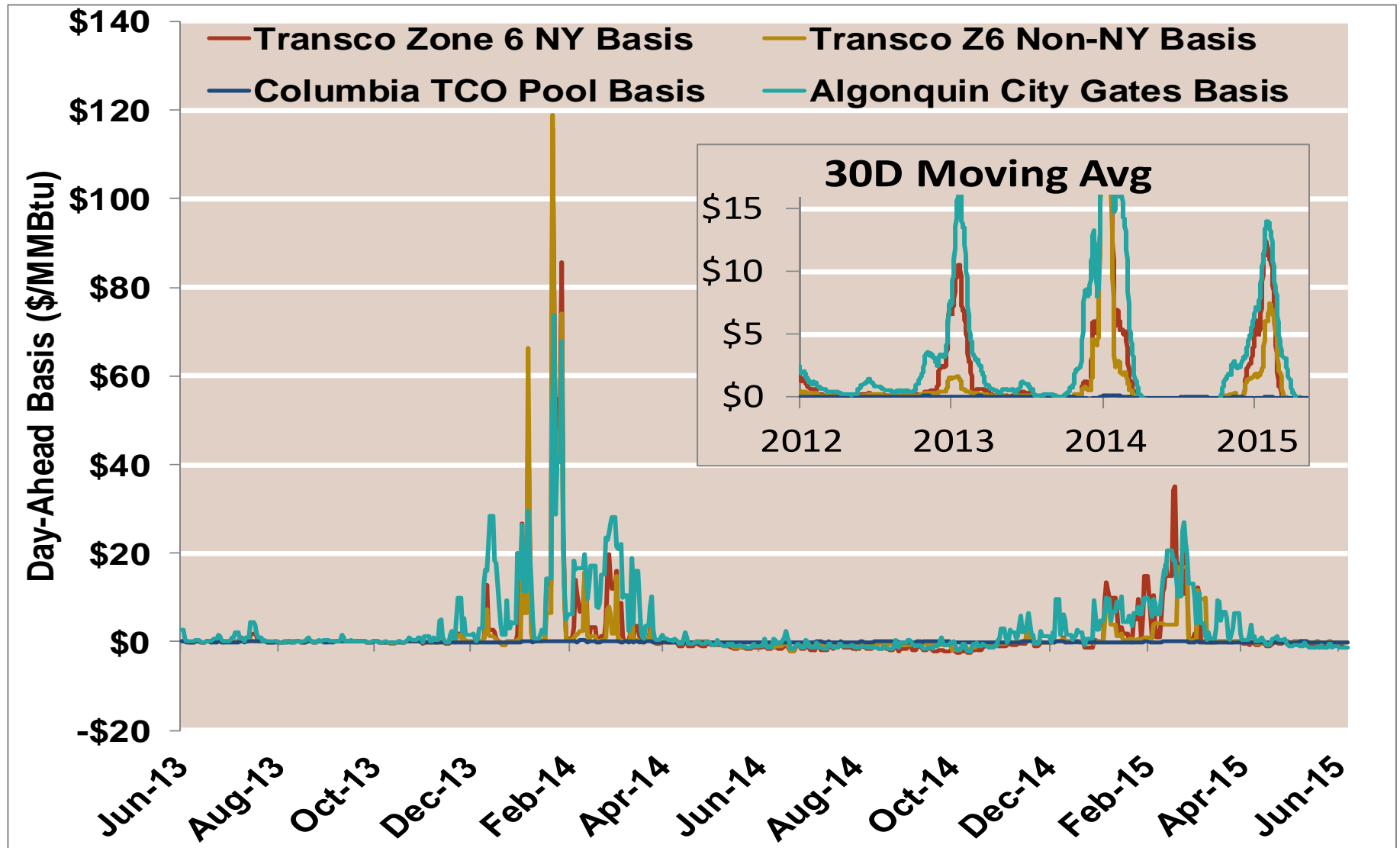
Updated 6/10/2015

## Northeast Day-Ahead Basis To Henry Hub Averaged Monthly



Note

## Northeast Day-Ahead Basis

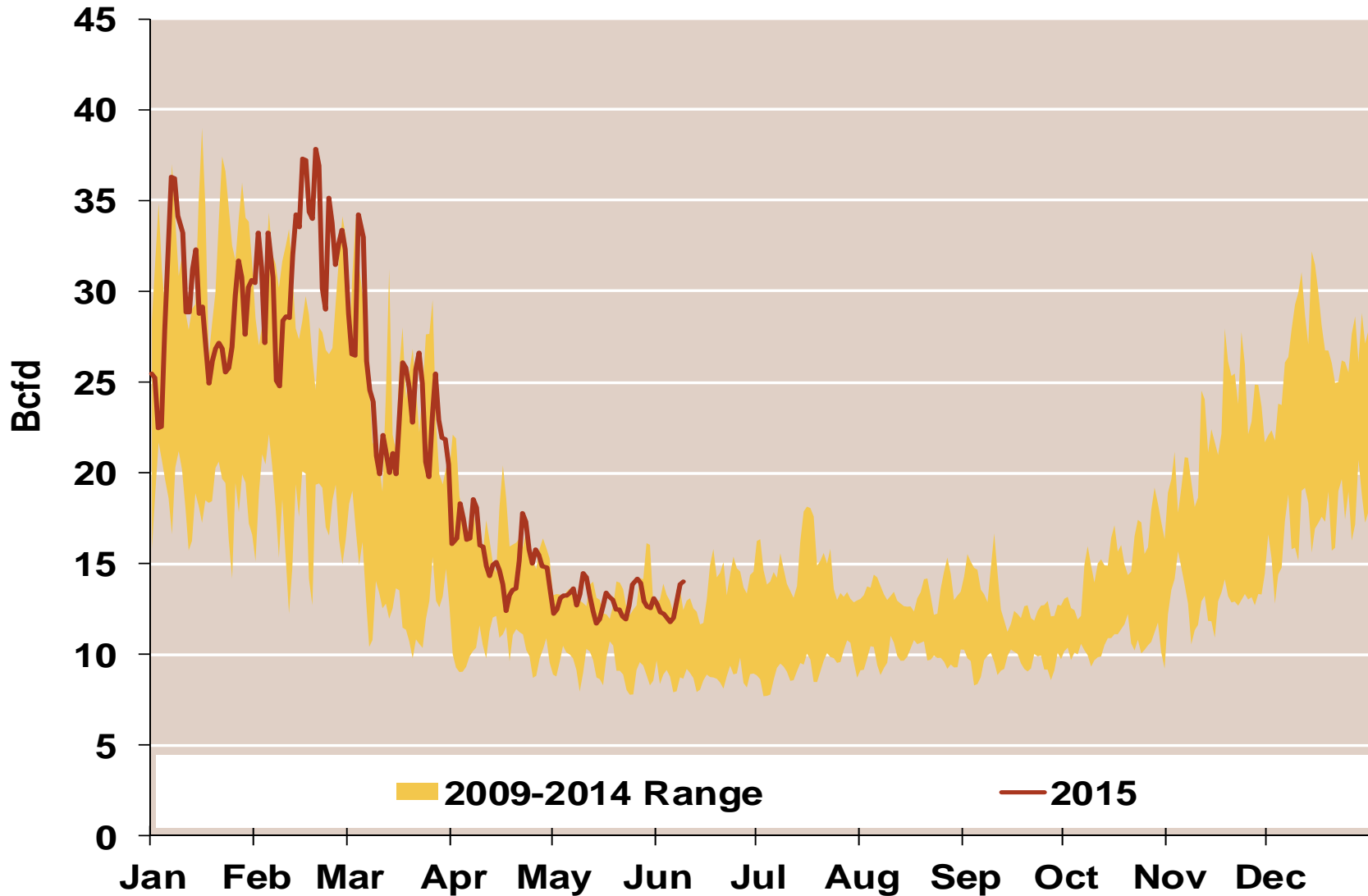


Notes:

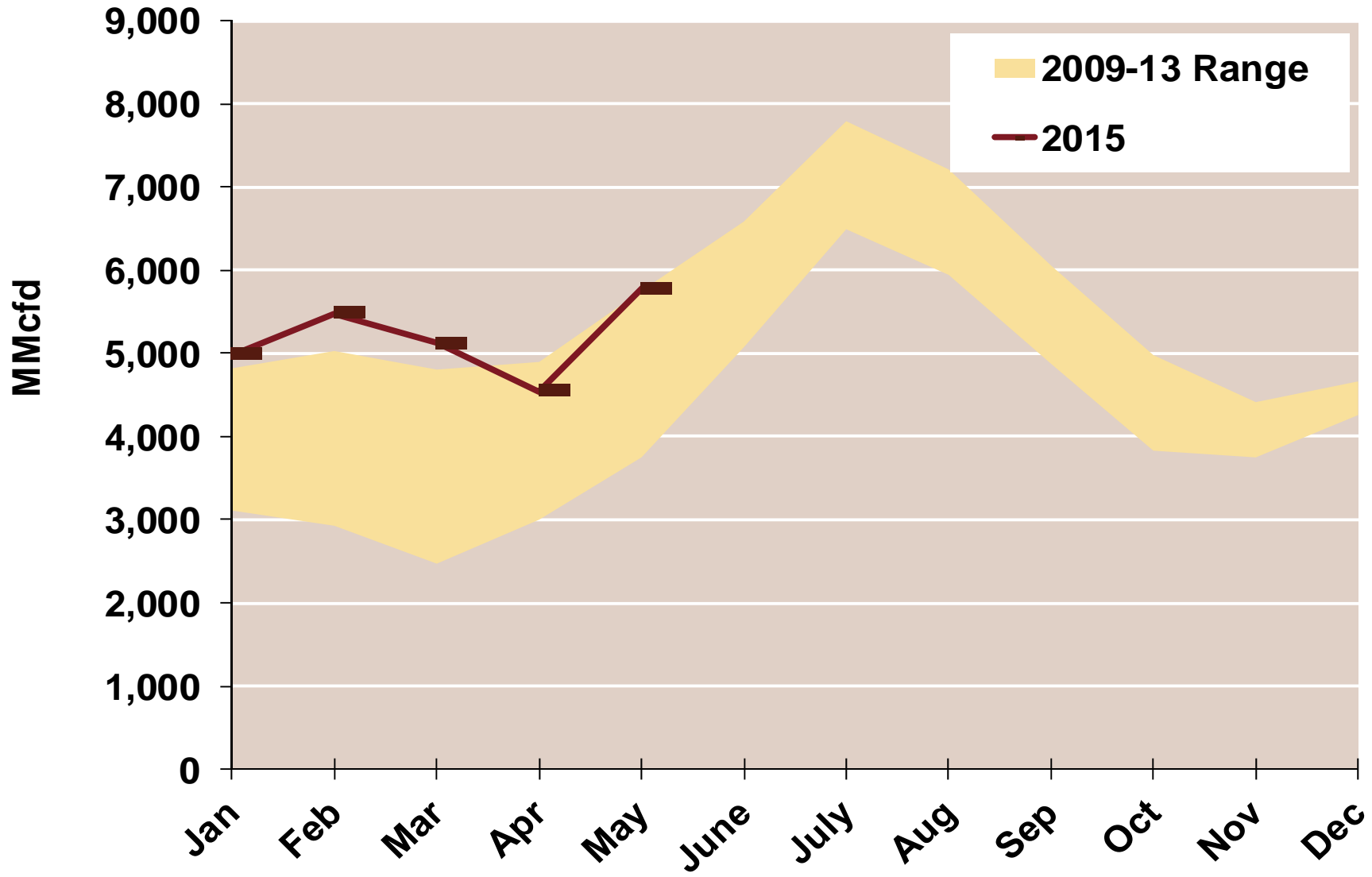
Source: Derived from Bloomberg ICE data

Updated 6/10/2015

## Daily Northeast Natural Gas Demand All Sectors



## Northeast Natural Gas Consumption for Power Generation



Source: Derived from *Bentek Energy* data