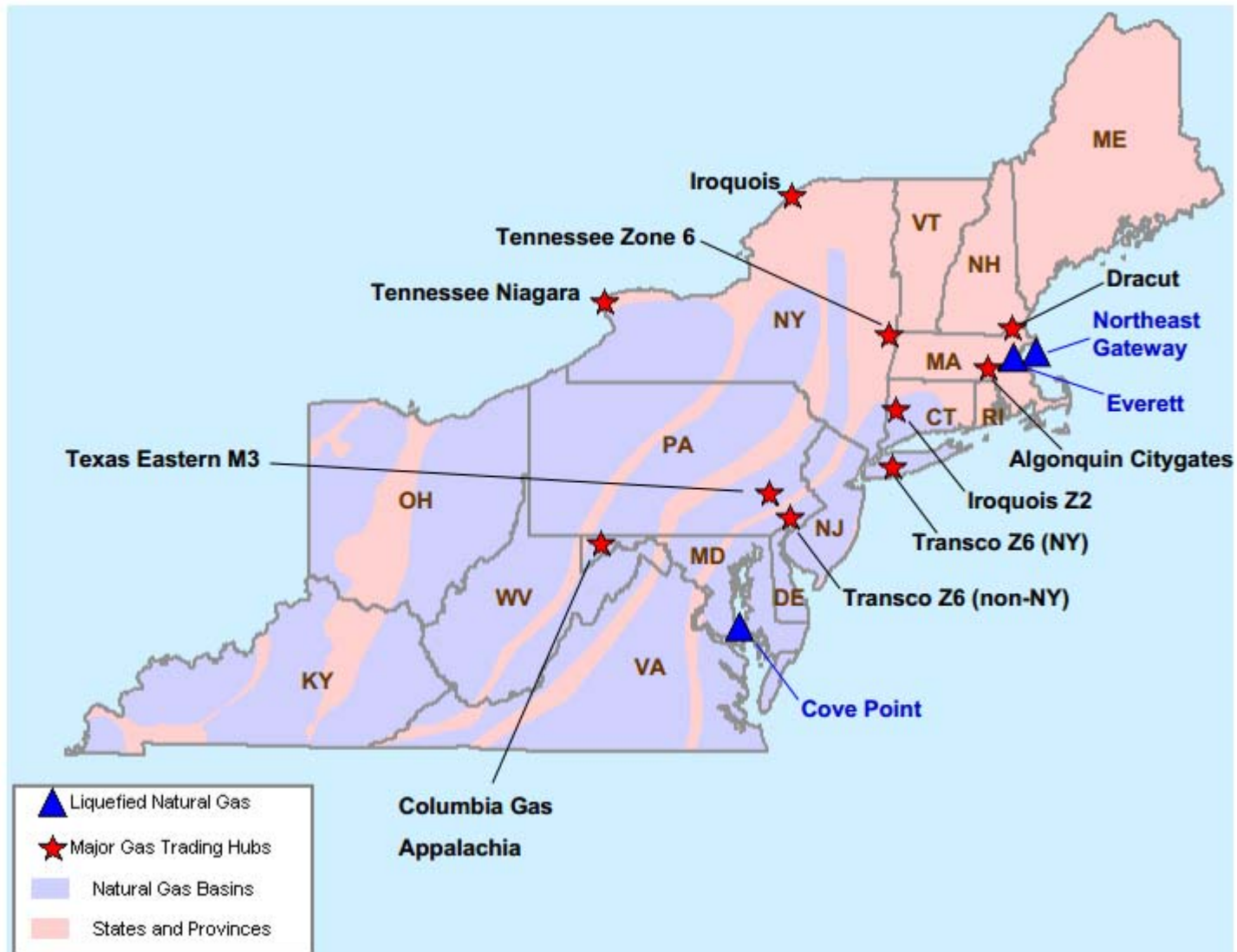


Northeast Natural Gas Region

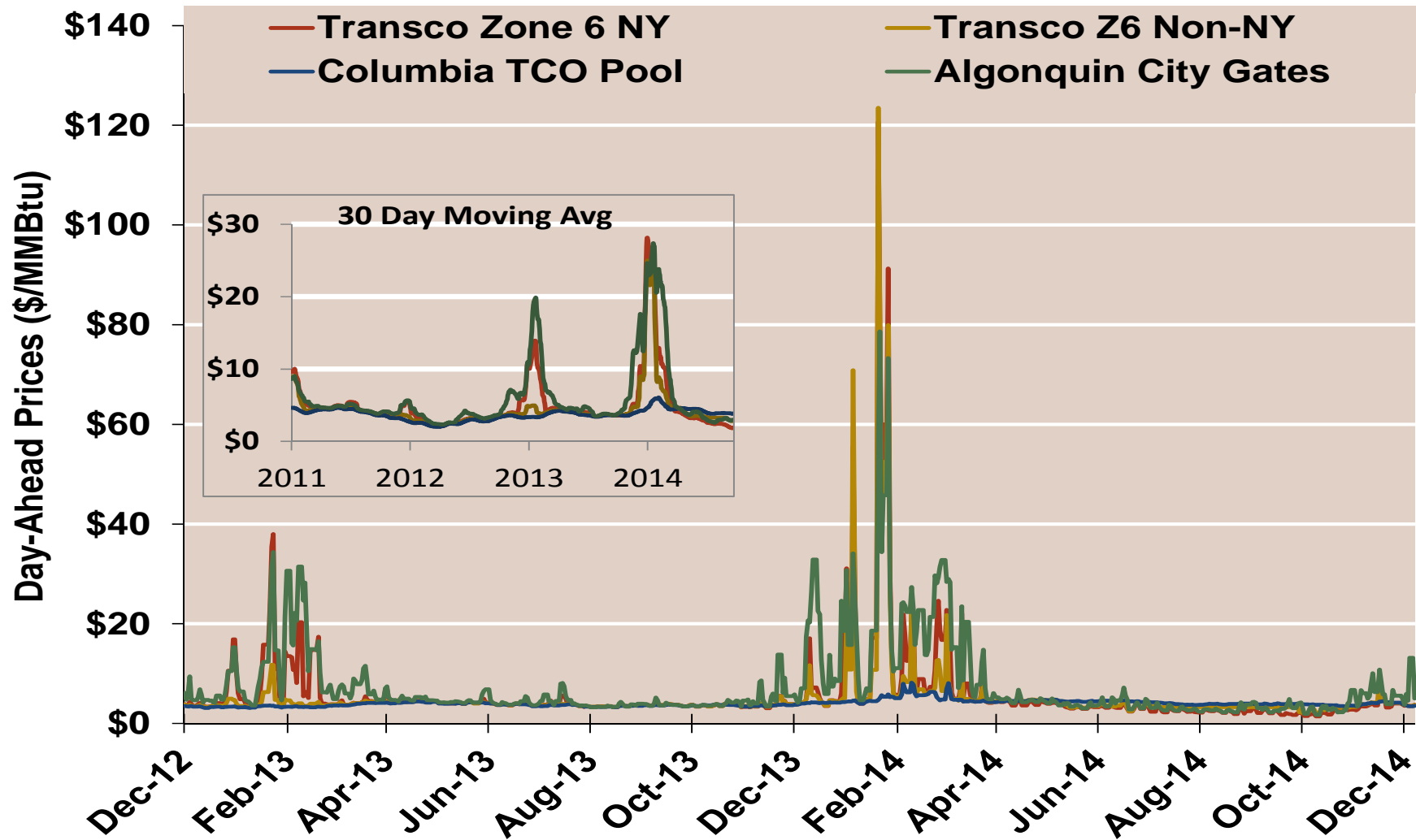


Northeast Day-Ahead Natural Gas Prices Averaged Annually/Seasonally

	Average Day Ahead Prices (\$/MMBtu)	Algonquin Citygates	Transco Zone 6 NY	Transco Zone 6 Non-NY	Columbia Applachia	Henry Hub
2011	Annual	5.02	5.02	4.69	4.07	3.98
	Summer	4.56	4.55	4.41	4.22	4.14
	Winter 2011/2012	4.00	3.59	3.09	2.77	2.74
2012	Annual	3.95	3.27	2.98	2.78	2.75
	Summer	3.25	2.86	2.83	2.71	2.69
	Winter 2012/2013	9.49	6.69	4.10	3.51	3.47
2013	Annual	6.95	5.11	4.03	3.72	3.72
	Summer	4.24	3.92	3.84	3.77	3.76
	Winter 2013/2014	15.76	11.40	9.66	4.60	4.61
2014 YTD	Annual	8.23	6.59	6.29	4.40	4.42
	Summer	3.50	2.89	3.53	4.14	4.18
	Winter 2014/2015	6.62	4.01	4.43	3.94	4.01

Notes:

Northeast Day-Ahead Prices

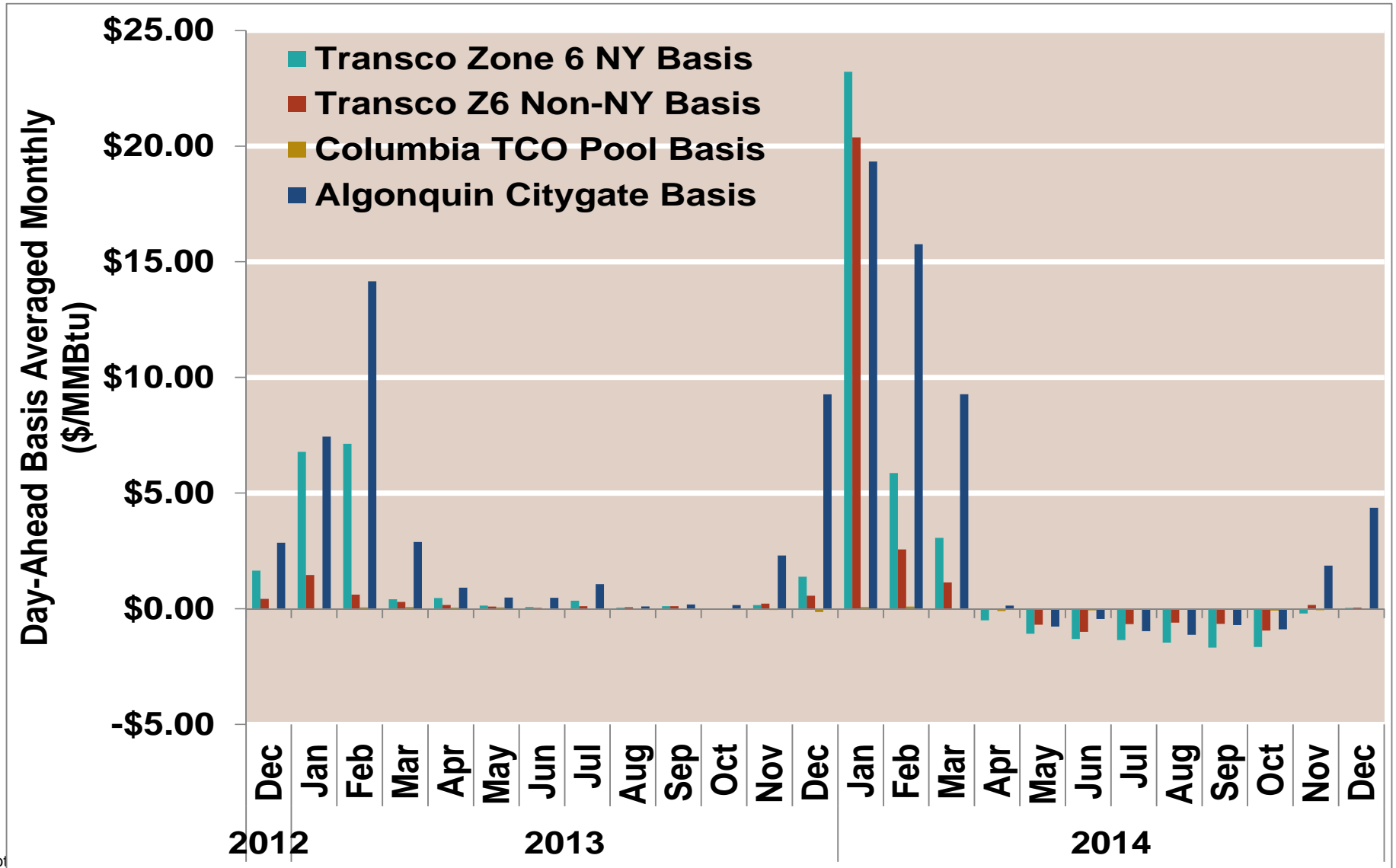


Notes:

Source: Derived from Bloomberg ICE data

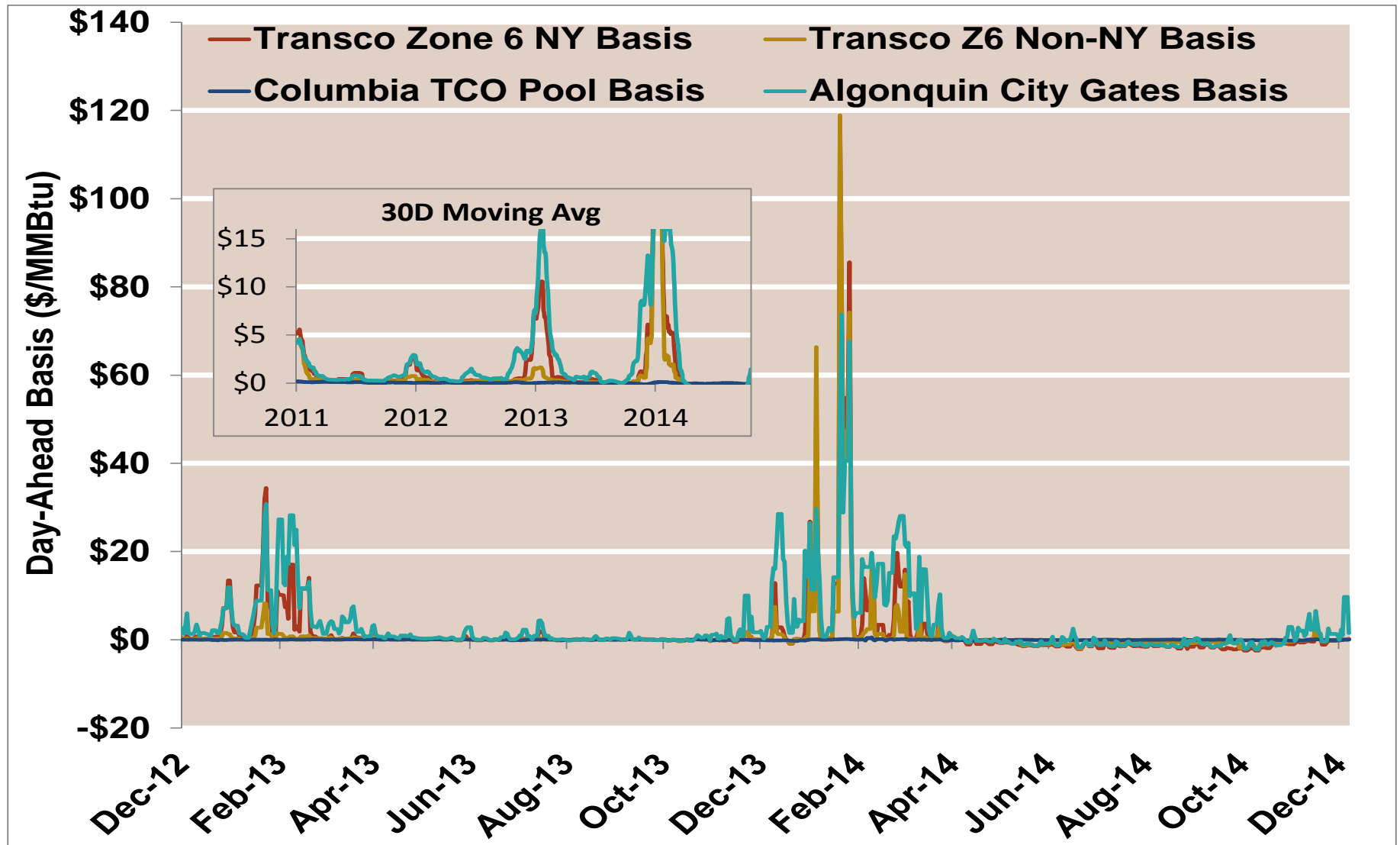
Updated 12/17/2014

Northeast Day-Ahead Basis To Henry Hub Averaged Monthly



Not

Northeast Day-Ahead Basis

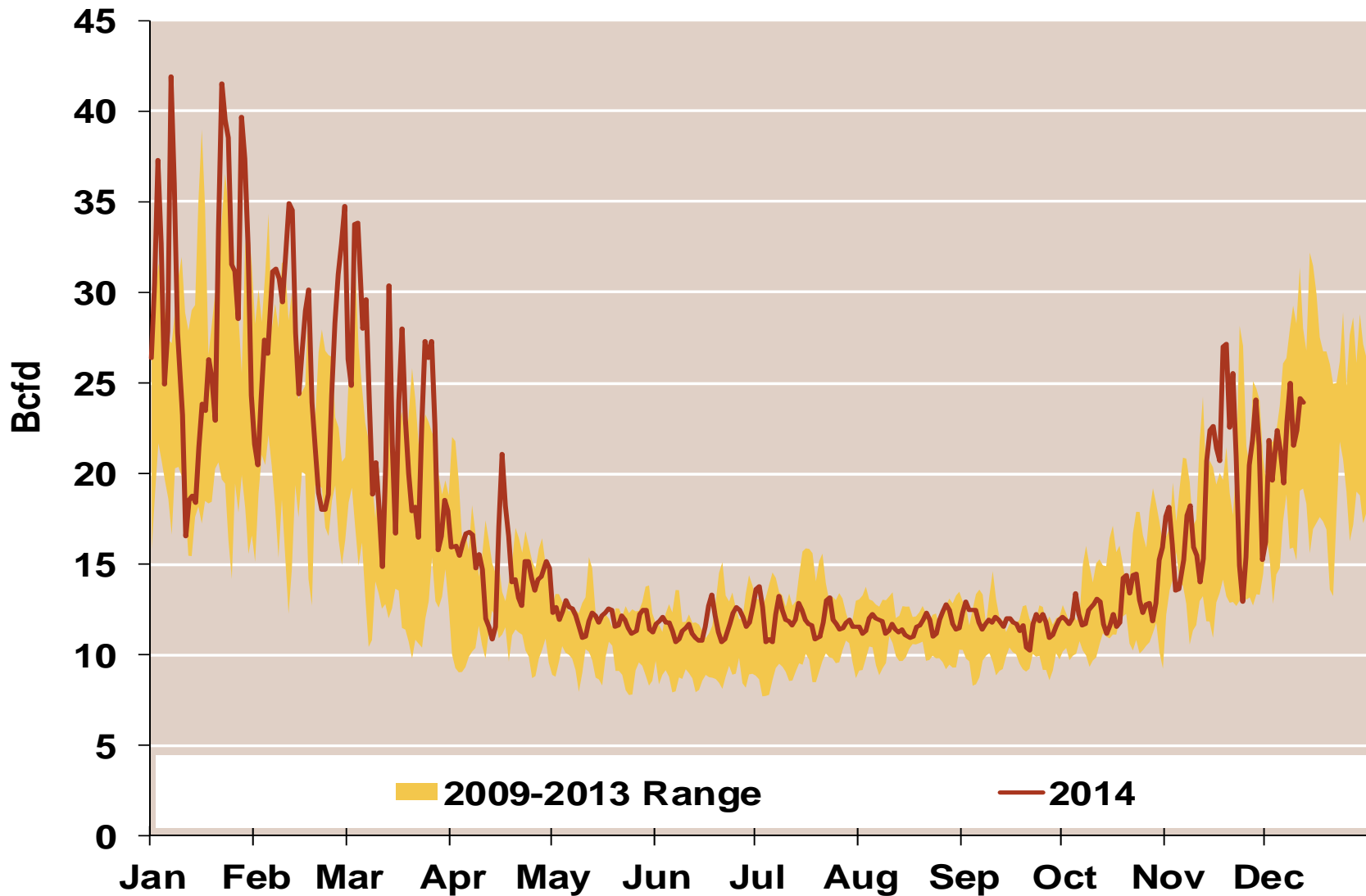


Notes:

Source: Derived from Bloomberg ICE data

Updated 12/17/2014

Daily Northeast Natural Gas Demand All Sectors



Source: Derived from *Bentek Energy* data

Northeast Natural Gas Consumption for Power Generation

