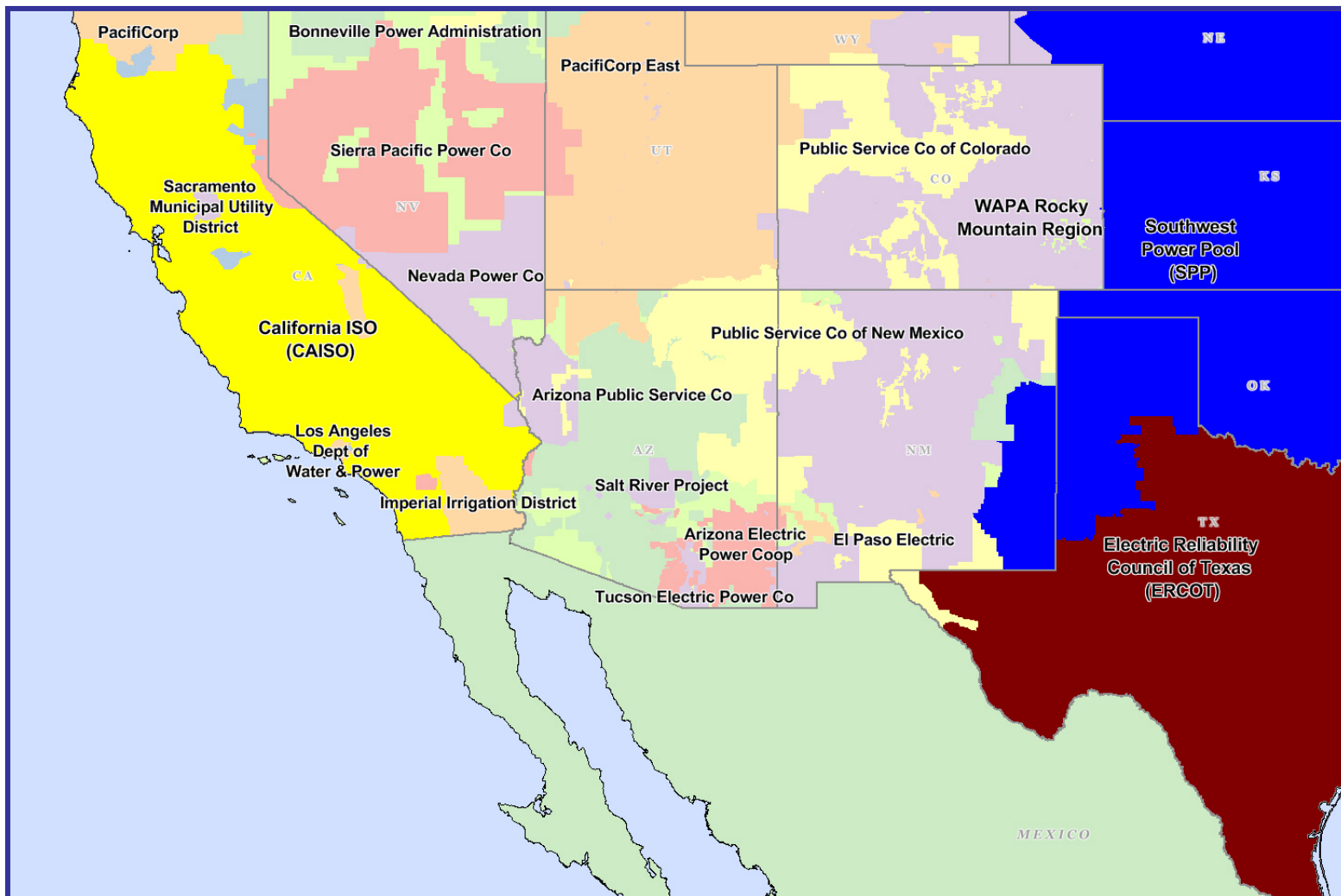


## Southwest Electric Regions



## Overview

### Geography

States covered: All or most of Arizona, New Mexico, Colorado and parts of Nevada, Wyoming and South Dakota.

Reliability region: Rocky Mountain Power Area (RMPA) and Arizona/New Mexico/Southern Nevada Power Area (AZNMSNV) sub-regions of the Western Electric Coordinating Council (WECC)

Balancing authorities: See list on page 5.

Hubs: Four Corners, Mead, Palo Verde

### RTO/ISO

None

## Southwest Electric Market: Overview and Focal Points

Federal Energy Regulatory Commission • Market Oversight • [www.ferc.gov/oversight](http://www.ferc.gov/oversight)

### **Demand** (Derived from FERC Form 714)

Peak demand: 2007: \$37,589/MWh

Peak demand growth: 2006-2007: 28.2%

Summer peak demand:	2006: \$29,317
	2007: \$37,589
	2008: \$33,873
	2009: \$33,982

### **Prices**

Annual Average of Daily Bilateral Day Ahead On-Peak Prices

ICE On-Peak Palo Verde:	2006: \$57.59/MWh
	2007: \$61.74/MWh
	2008: \$71.22/MWh
	2009: \$35.82/MWh

### **Interconnections/Seams**

Generation suppliers export excess power to the rest of the West and particularly to California.

## Balancing Authorities in the Southwest Electric Market

### WECC Subregion and Balancing Authority

### NERC Acronym

#### AZNMSNV

Arizona Public Service Company  
 DECA, LLC - Arlington Valley  
 El Paso Electric Company  
 Gila River Maricopa Arizona  
 Harquahala L.L.C.  
 Imperial Irrigation District  
 Nevada Power Company  
 Public Service Company of New Mexico  
 Salt River Project  
 Tucson Electric Power Company  
 Western Area Power Administration - Lower Colorado

AZPS  
 DEAA  
 EPE  
 GRMA  
 HGMA  
 IID  
 NEVP  
 PNM  
 SRP  
 TEPC  
 WALC

#### RMPA

Public Service Company of Colorado  
 Western Area Power Administration - Colorado-Missouri

PSCO  
 WACM

### Contact Information

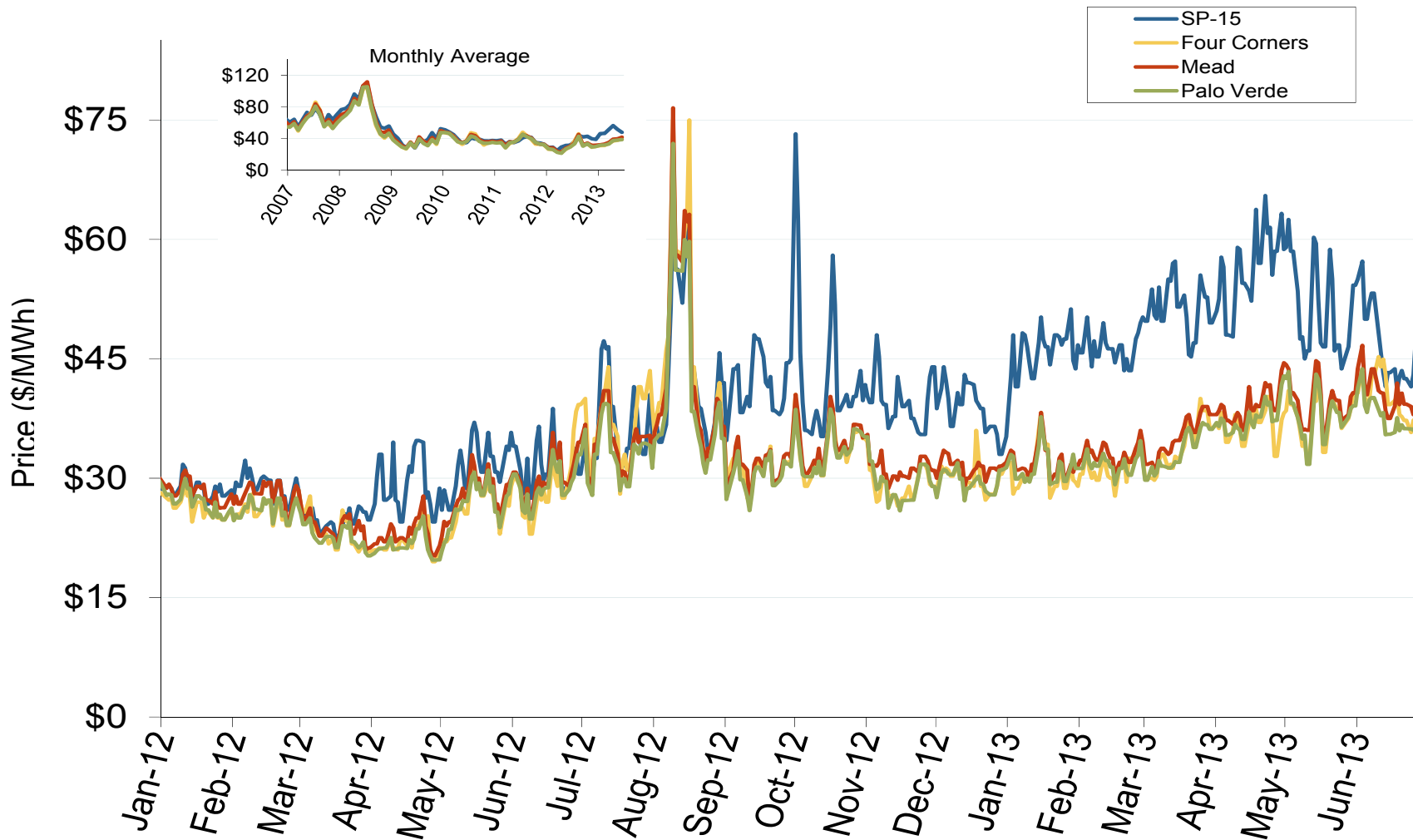
For answers regarding material in the Southwest section, please contact our staff at:

[oversight@ferc.gov](mailto:oversight@ferc.gov)

## Southwest Annual Average Bilateral Prices

Annual Average Day Ahead On Peak Prices (\$/MWh)						
	2008	2009	2010	2011	2012	5-Year Avg
Four Corners	\$71.84	\$35.38	\$39.68	\$36.34	\$30.10	\$42.69
Palo Verde	\$71.87	\$34.77	\$38.76	\$36.10	\$29.41	\$42.20
Mead	\$75.63	\$36.58	\$40.11	\$36.92	\$30.80	\$44.03

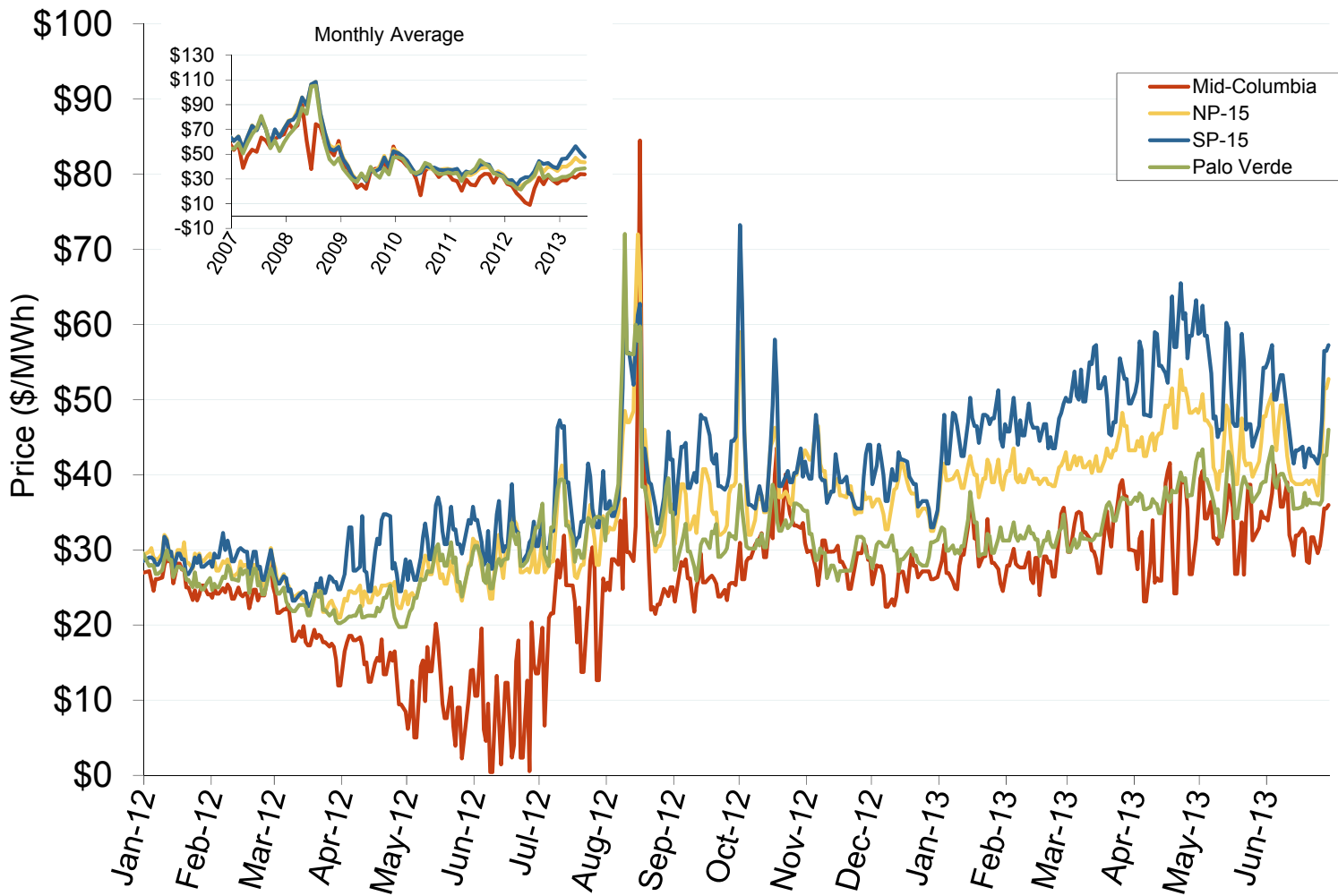
## Southwestern Daily Index Day-Ahead On-Peak Prices



Southwest Electric Market: Western Index Prices

Federal Energy Regulatory Commission • Market Oversight • [www.ferc.gov/oversight](http://www.ferc.gov/oversight)

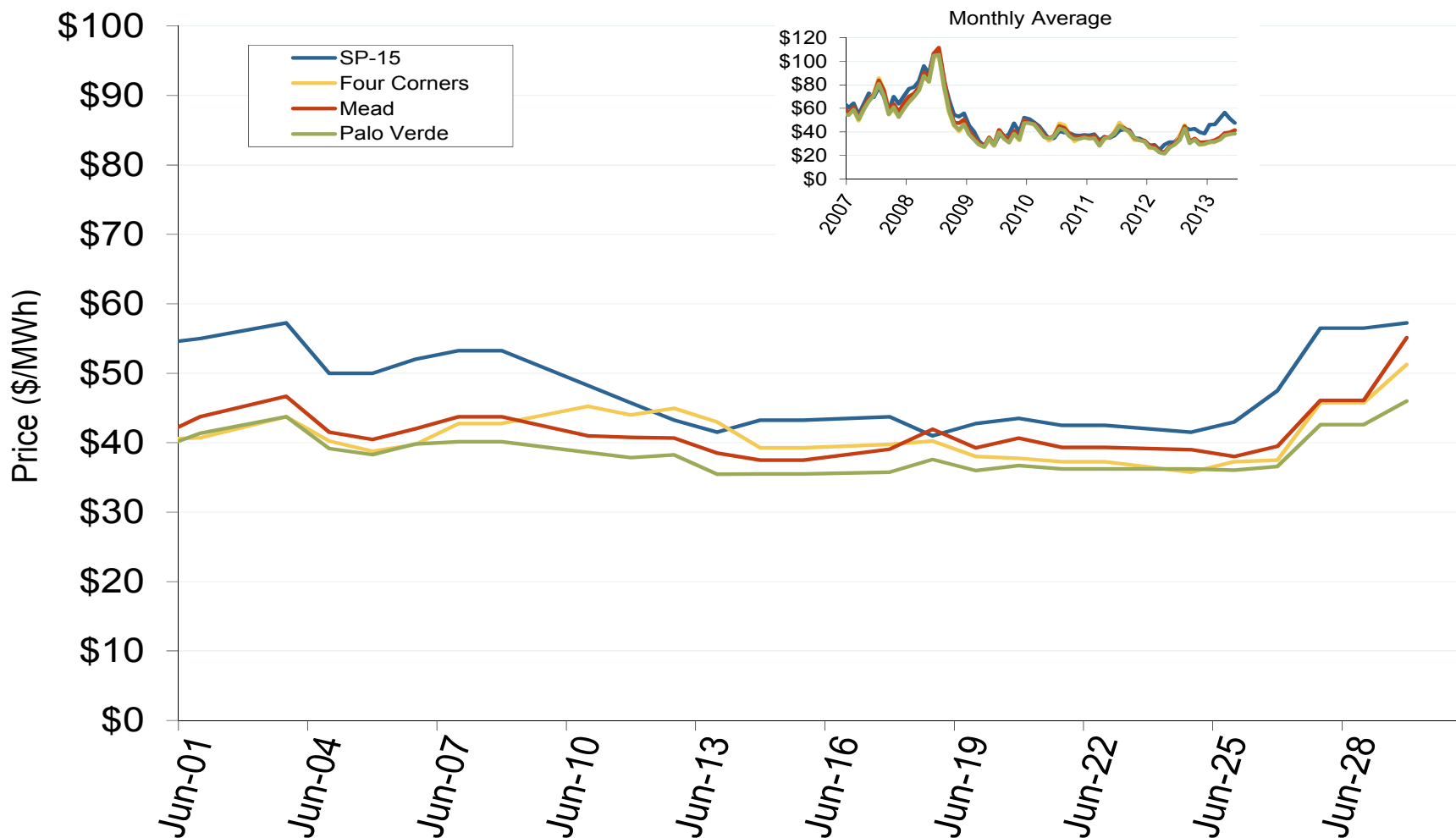
## Western Daily Index Day-Ahead On-Peak Prices



Southwest Electric Market: Last Month's Southwestern Index Prices

Federal Energy Regulatory Commission • Market Oversight • [www.ferc.gov/oversight](http://www.ferc.gov/oversight)

## Southwestern Daily Index Day-Ahead On-Peak Prices

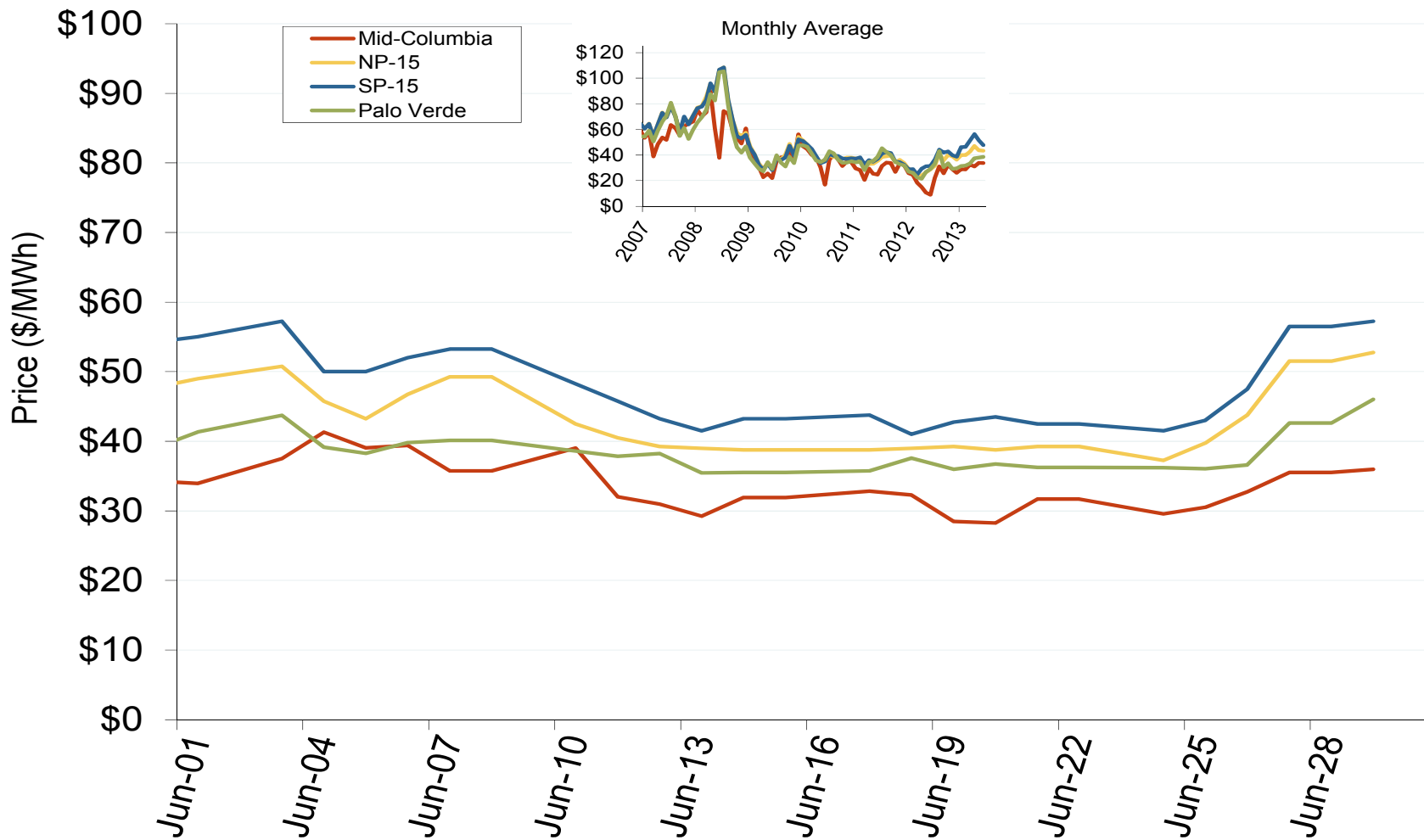




Southwest Electric Market: Last Month's Western Index Prices

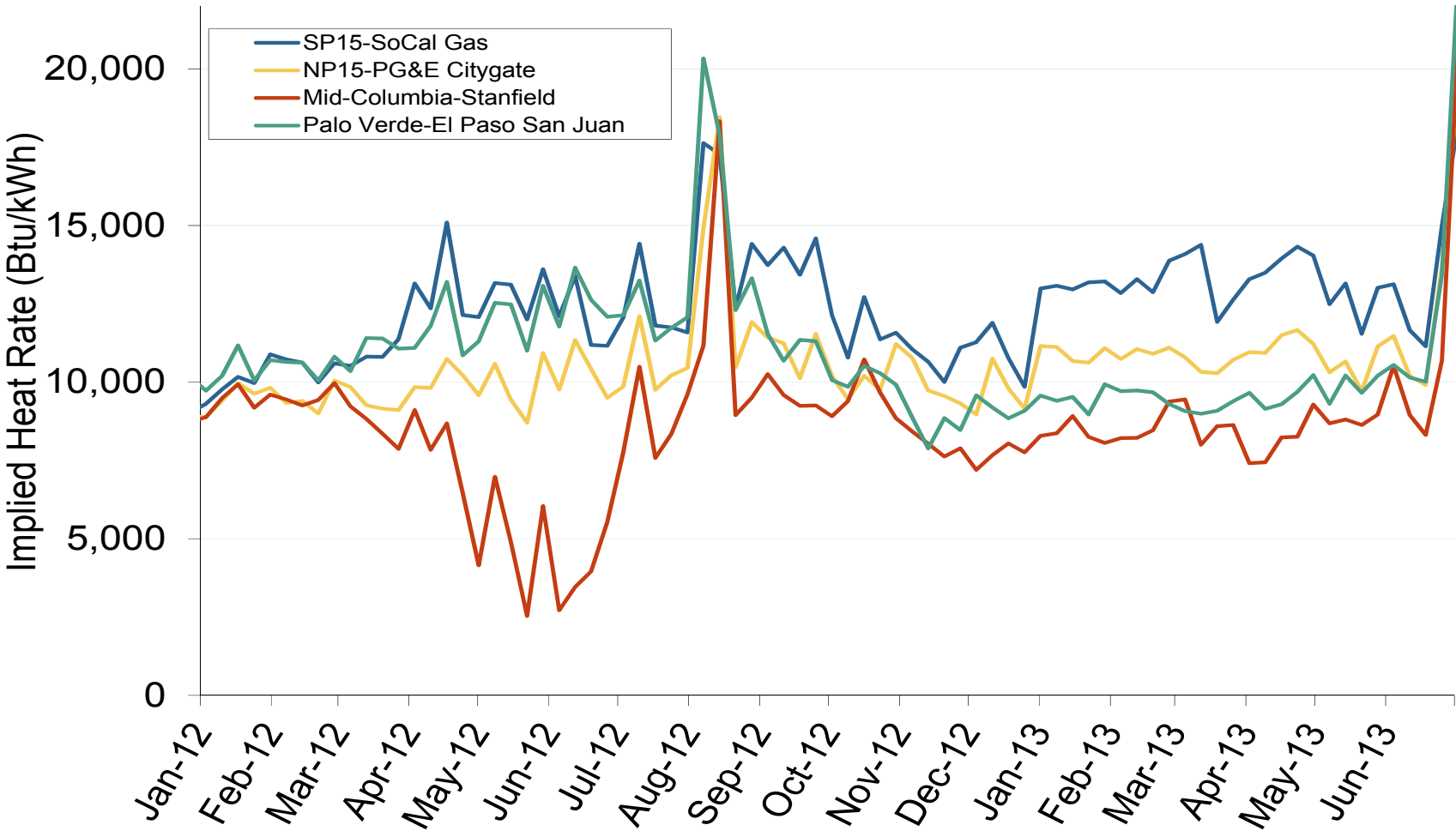
Federal Energy Regulatory Commission • Market Oversight • [www.ferc.gov/oversight](http://www.ferc.gov/oversight)

## Western Daily Index Day-Ahead On-Peak Prices



Federal Energy Regulatory Commission • Market Oversight • [www.ferc.gov/oversight](http://www.ferc.gov/oversight)

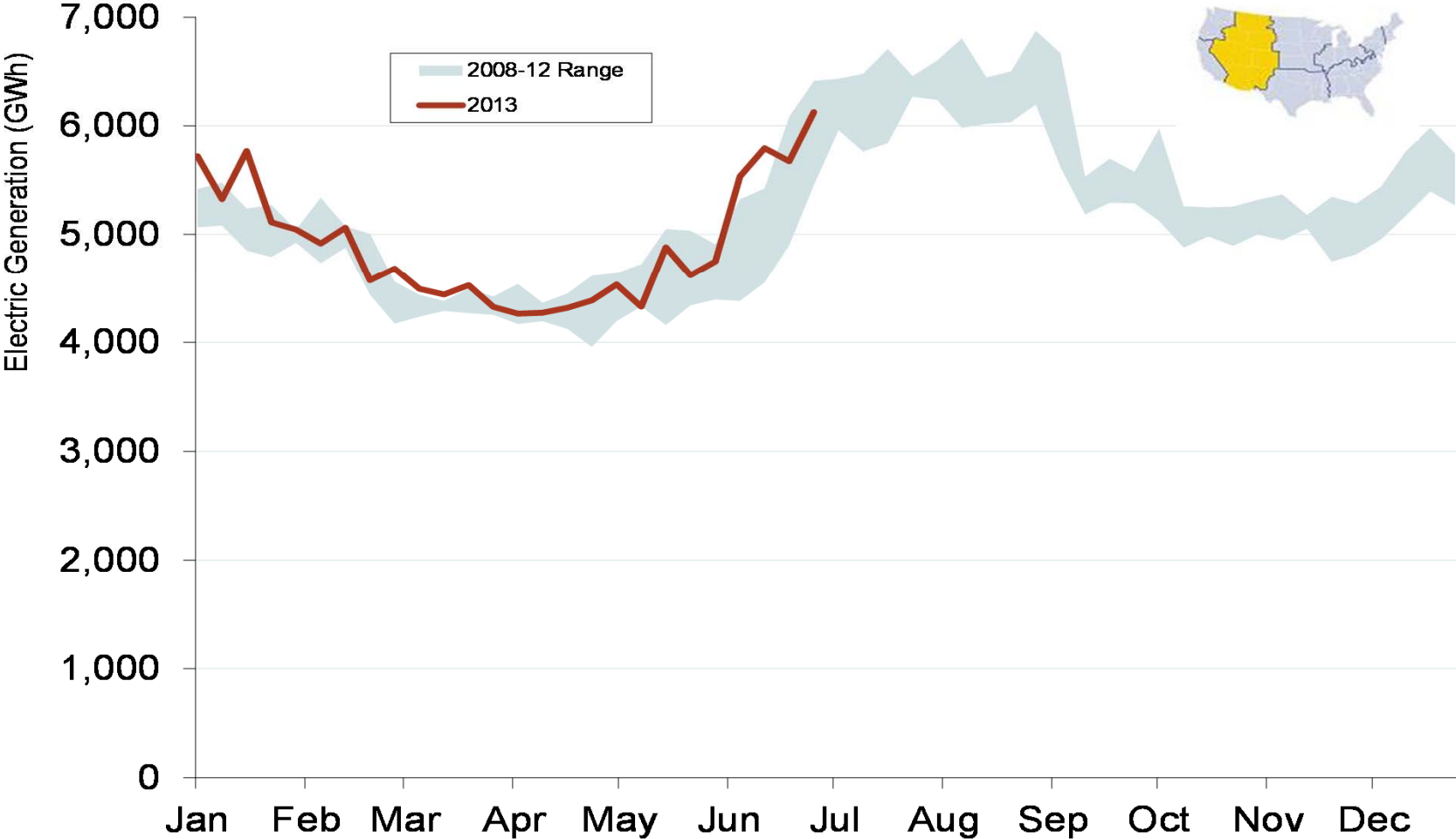
### Implied Heat Rates at Western Trading Points - Weekly Avgs.



Source: Derived from *Platts* on-peak electric and natural gas price data  
July 2013

Updated: July 05, 2013

### Weekly Generation Output - Rocky Mountains



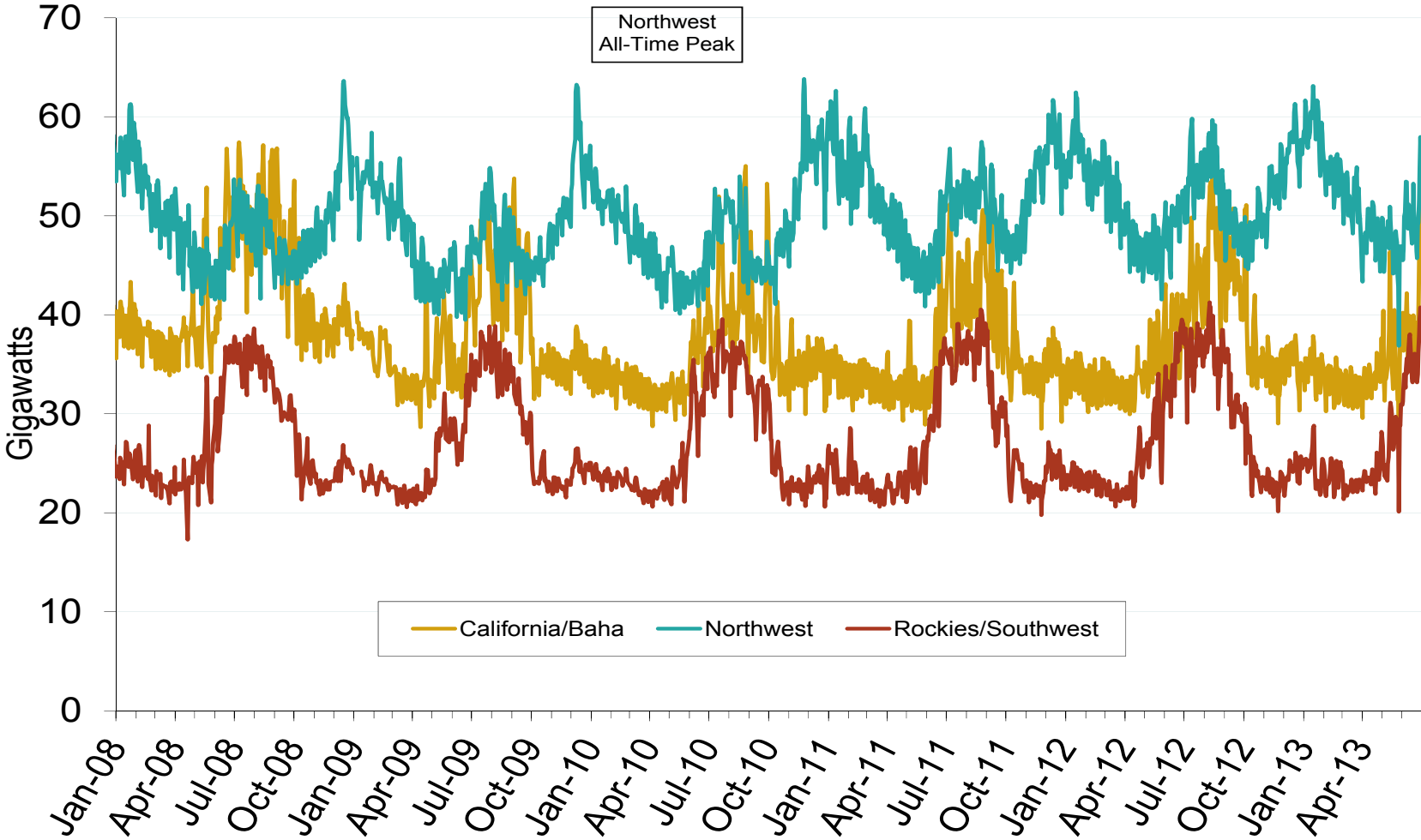
Source: Derived from *EEI* data  
July 2013

Updated: July 09, 2013

Southwest Electric Market: Daily Peak Demand

Federal Energy Regulatory Commission • Market Oversight • [www.ferc.gov/oversight](http://www.ferc.gov/oversight)

### Western Daily Actual Peak Demand



Notes: Data does not include weekends and holidays. Some data for 12/31/2008 – 1/9/2009 are not available from WECC  
Source: Derived from WECC Daily Report data available at <http://wecc.biz>