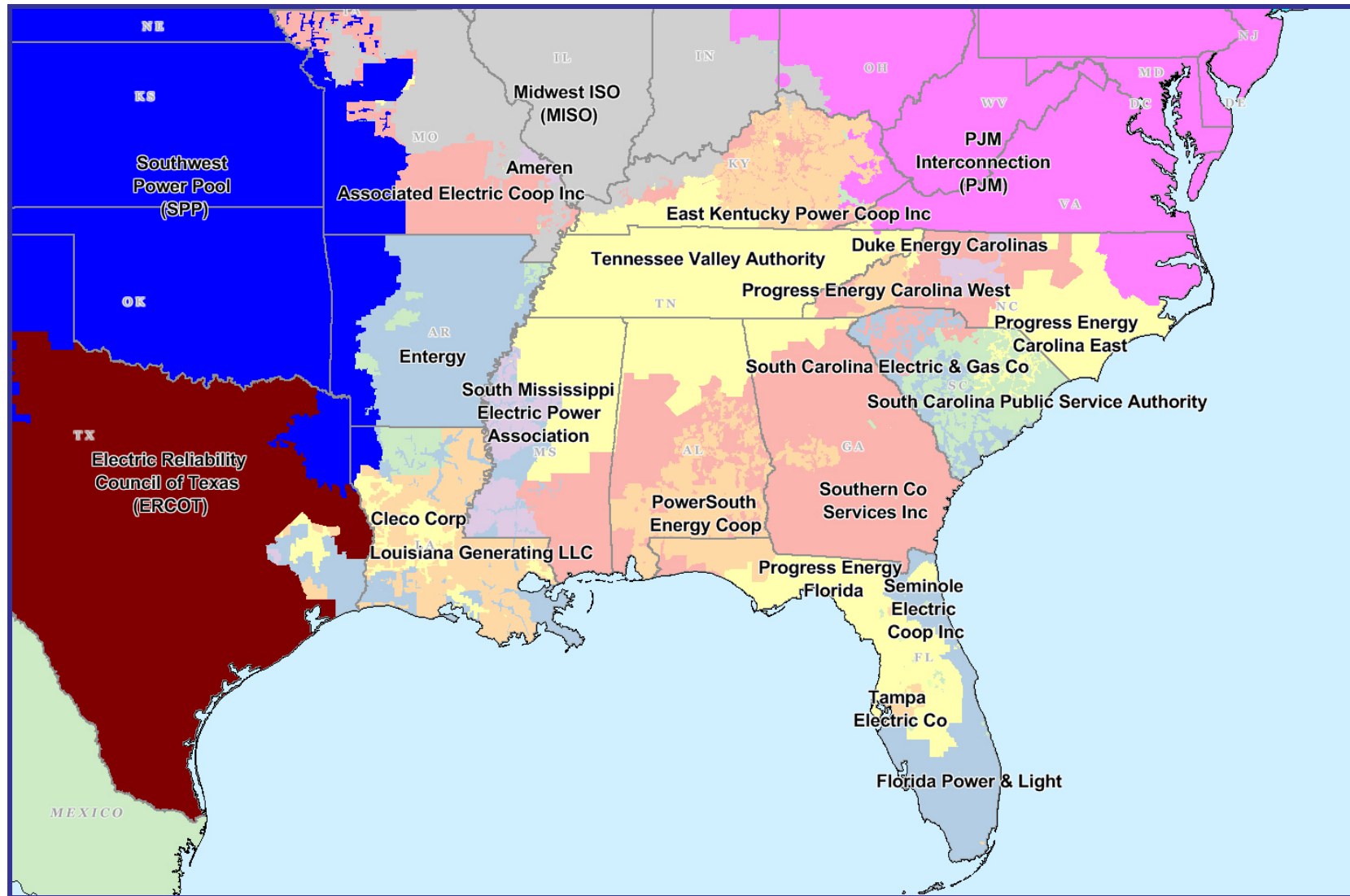


Southeast Electric Market: Overview and Focal Points

Federal Energy Regulatory Commission • Market Oversight • www.ferc.gov/oversight

Southeast Electric Regions



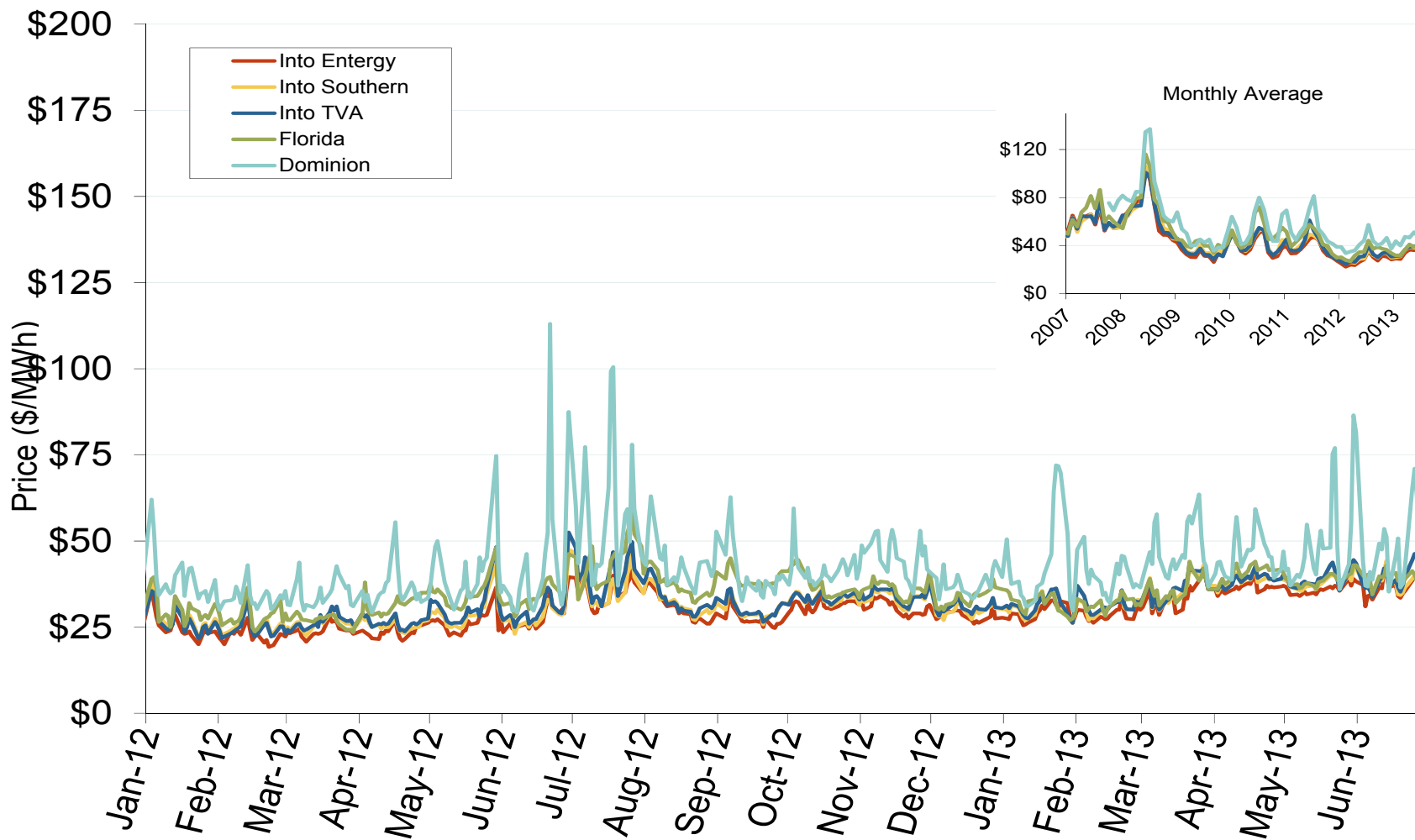
Southeast Annual Average Bilateral Prices

Annual Average Day Ahead On Peak Prices (\$/MWh)						
	2008	2009	2010	2011	2012	5-Year Avg
VACAR	\$70.86	\$36.42	\$43.24	\$44.44	\$32.65	\$45.55
Southern	\$70.13	\$36.58	\$42.61	\$39.97	\$29.83	\$43.86
TVA	\$69.01	\$34.91	\$41.79	\$40.68	\$30.63	\$43.44
Florida	\$74.66	\$40.75	\$50.81	\$44.62	\$34.39	\$49.08
Entergy	\$68.49	\$33.57	\$40.07	\$37.14	\$27.75	\$41.44

Southeast Electric Market: Southeastern Index Prices

Federal Energy Regulatory Commission • Market Oversight • www.ferc.gov/oversight

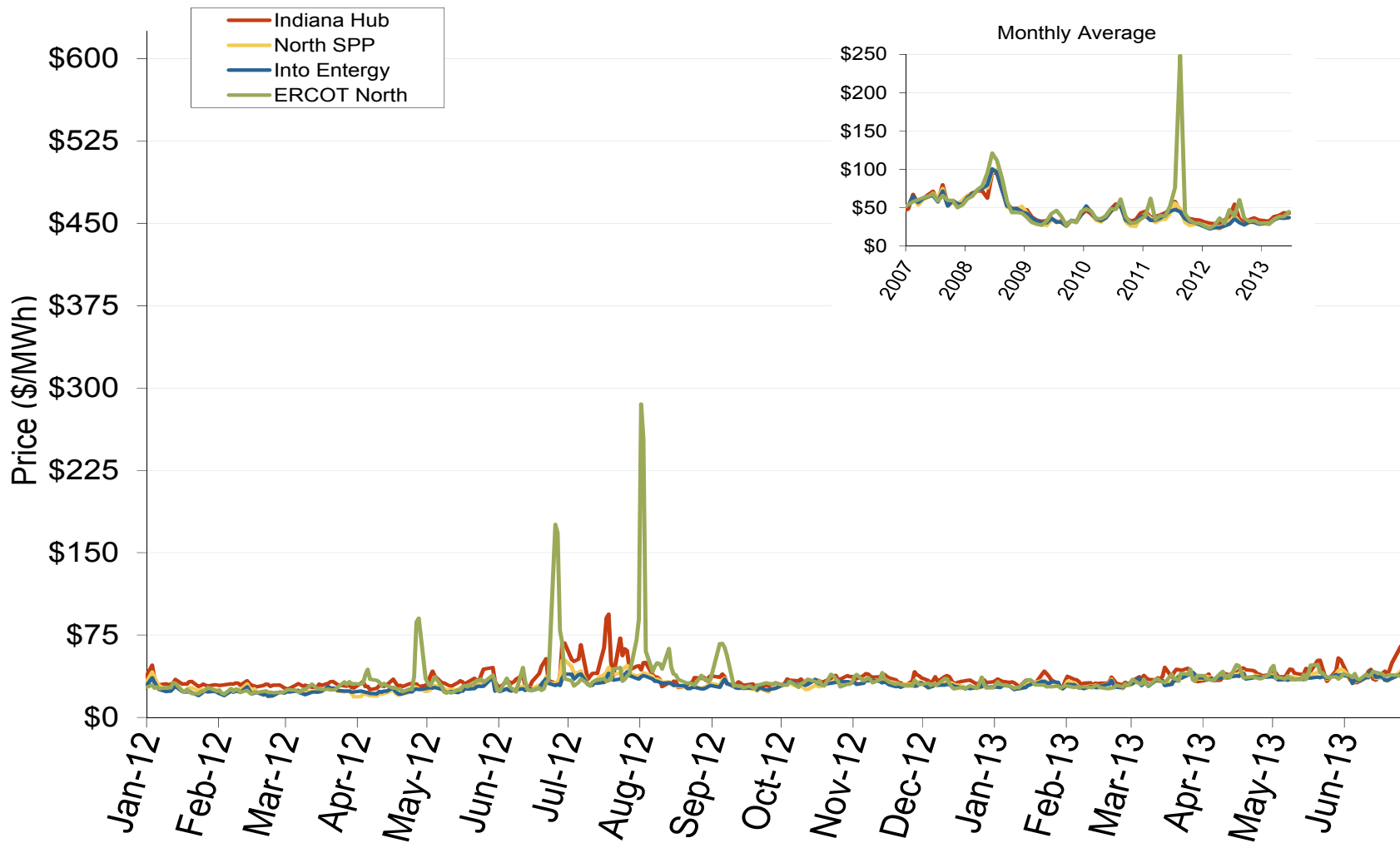
Southeastern Daily Index Day-Ahead On-Peak Prices



Southeast Electric Market: Midwestern Index Prices

Federal Energy Regulatory Commission • Market Oversight • www.ferc.gov/oversight

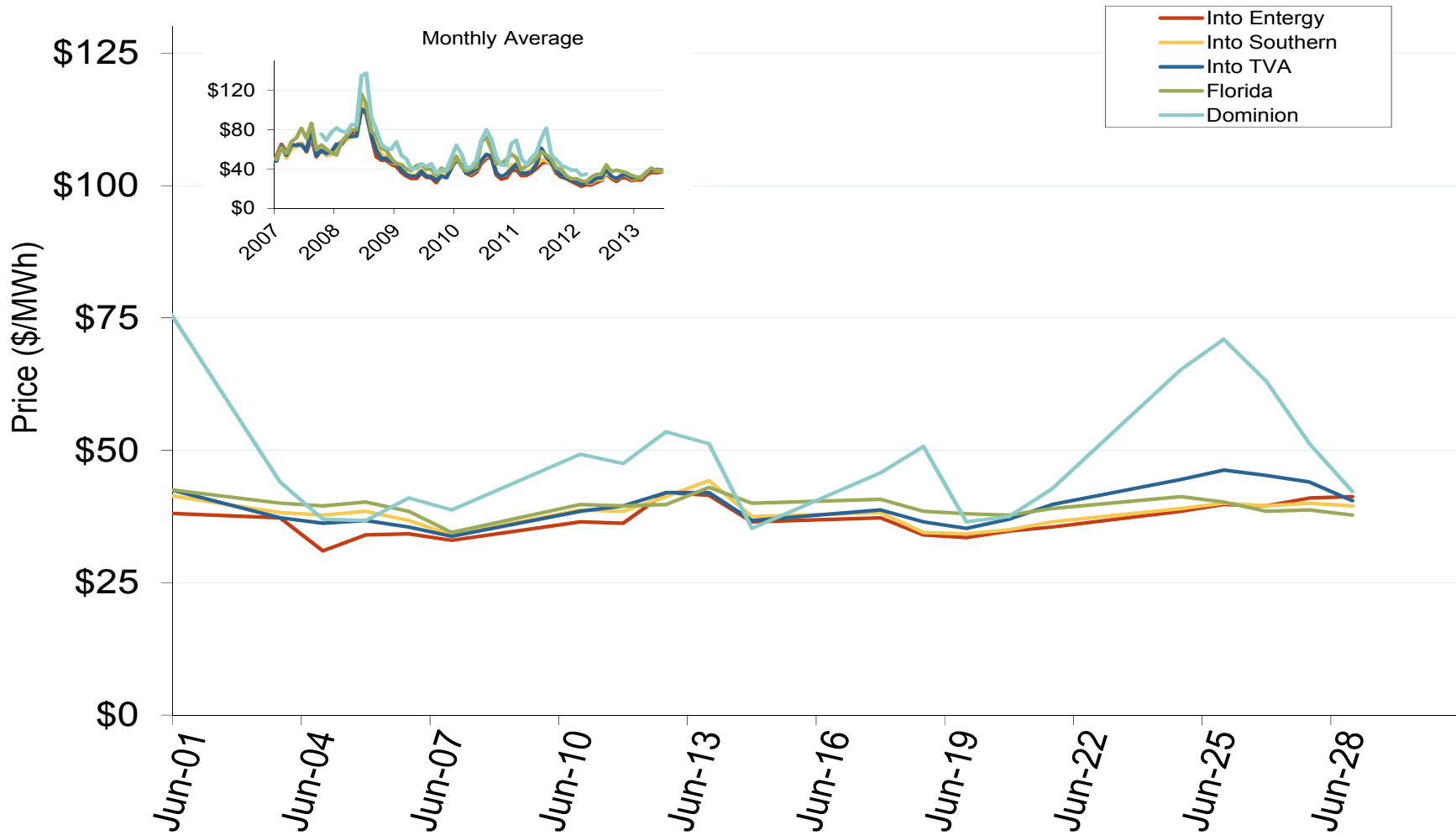
Midwestern Daily Index Day-Ahead On-Peak Prices



Southeast Electric Market: Last Month's Southeastern Index Prices

Federal Energy Regulatory Commission • Market Oversight • www.ferc.gov/oversight

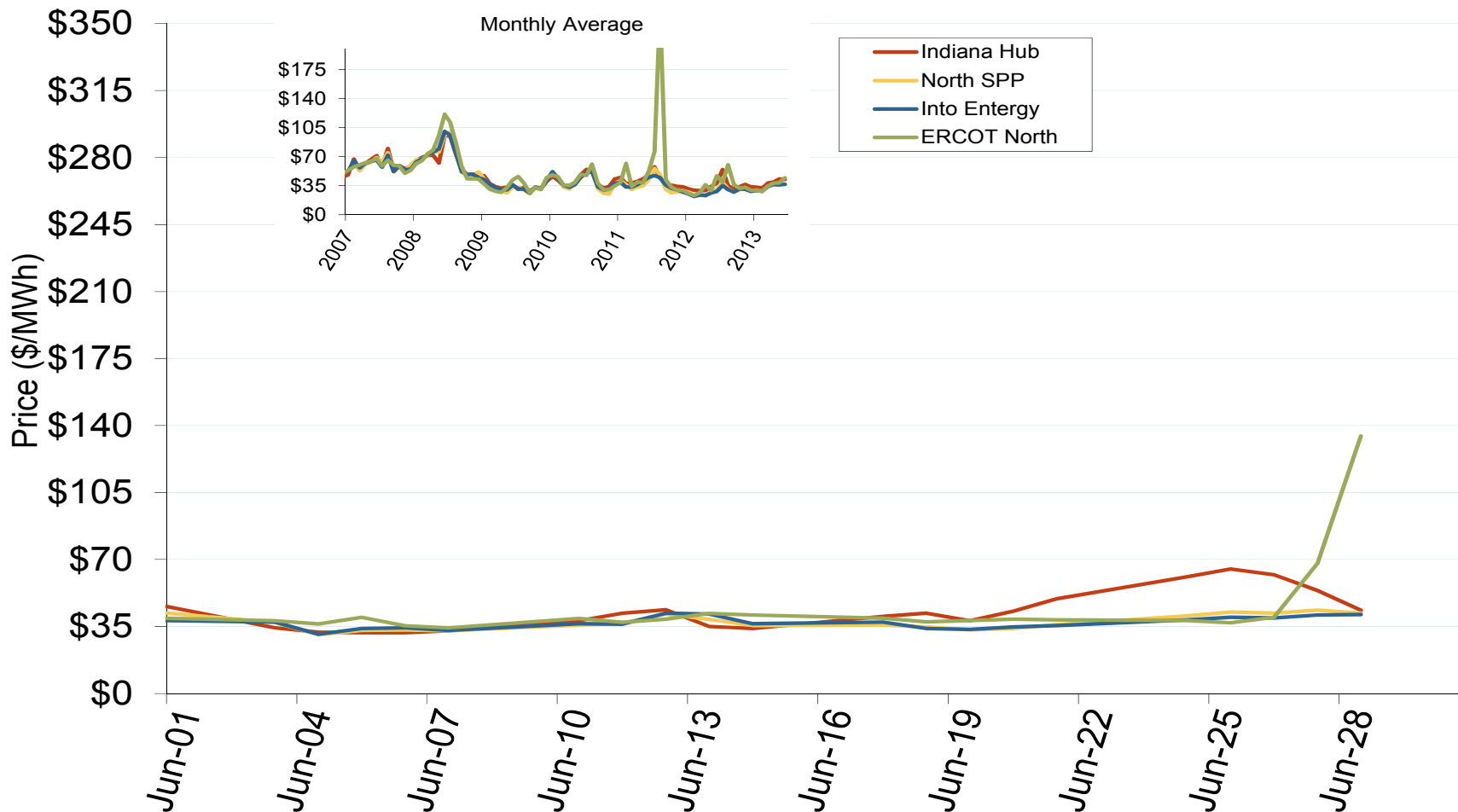
Southeastern Daily Index Day-Ahead On-Peak Prices



Southeast Electric Market: Last Month's Midwestern Index Prices

Federal Energy Regulatory Commission • Market Oversight • www.ferc.gov/oversight

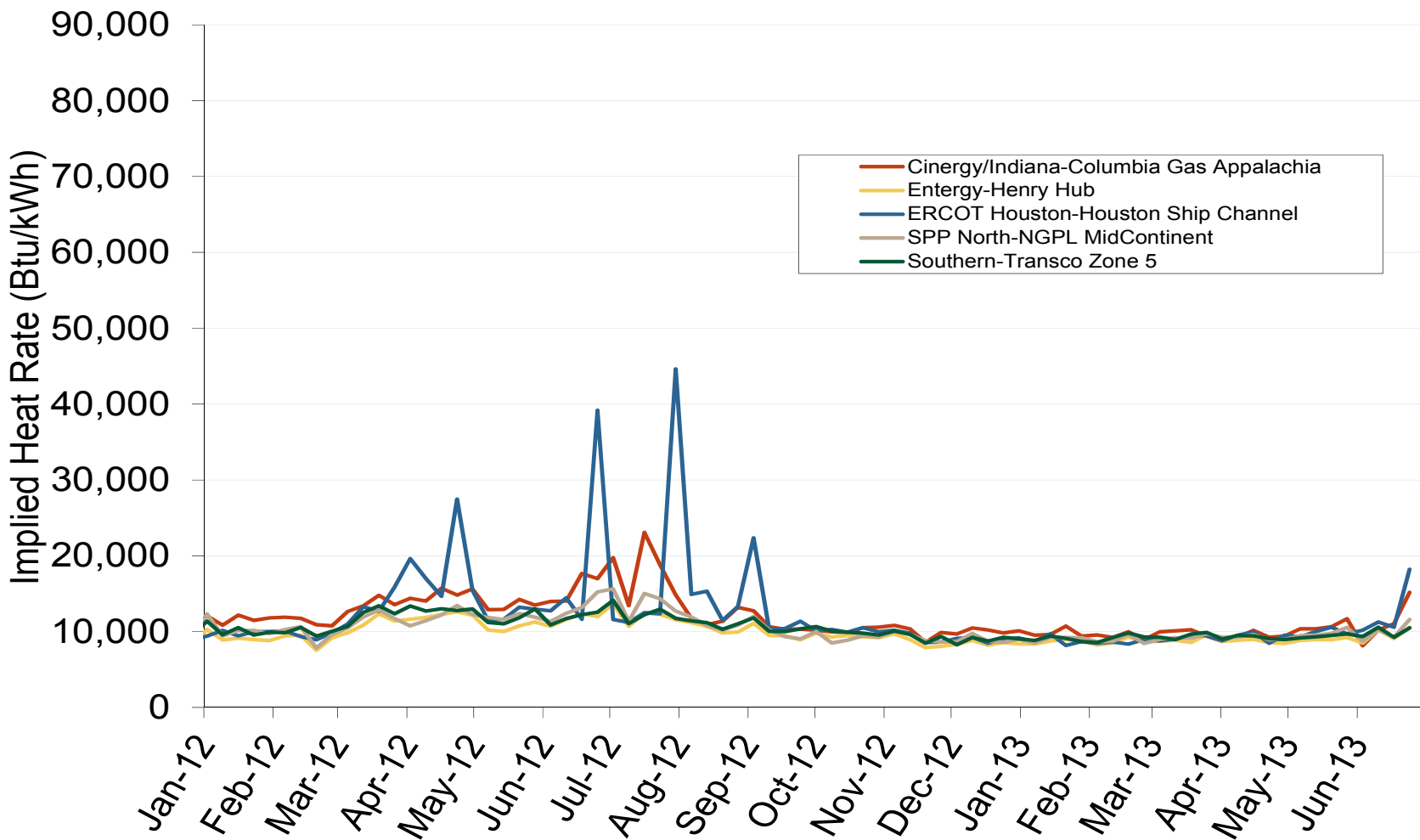
Midwestern Daily Index Day-Ahead On-Peak Prices



Southeast Electric Market: South Central Implied Heat Rates

Federal Energy Regulatory Commission • Market Oversight • www.ferc.gov/oversight

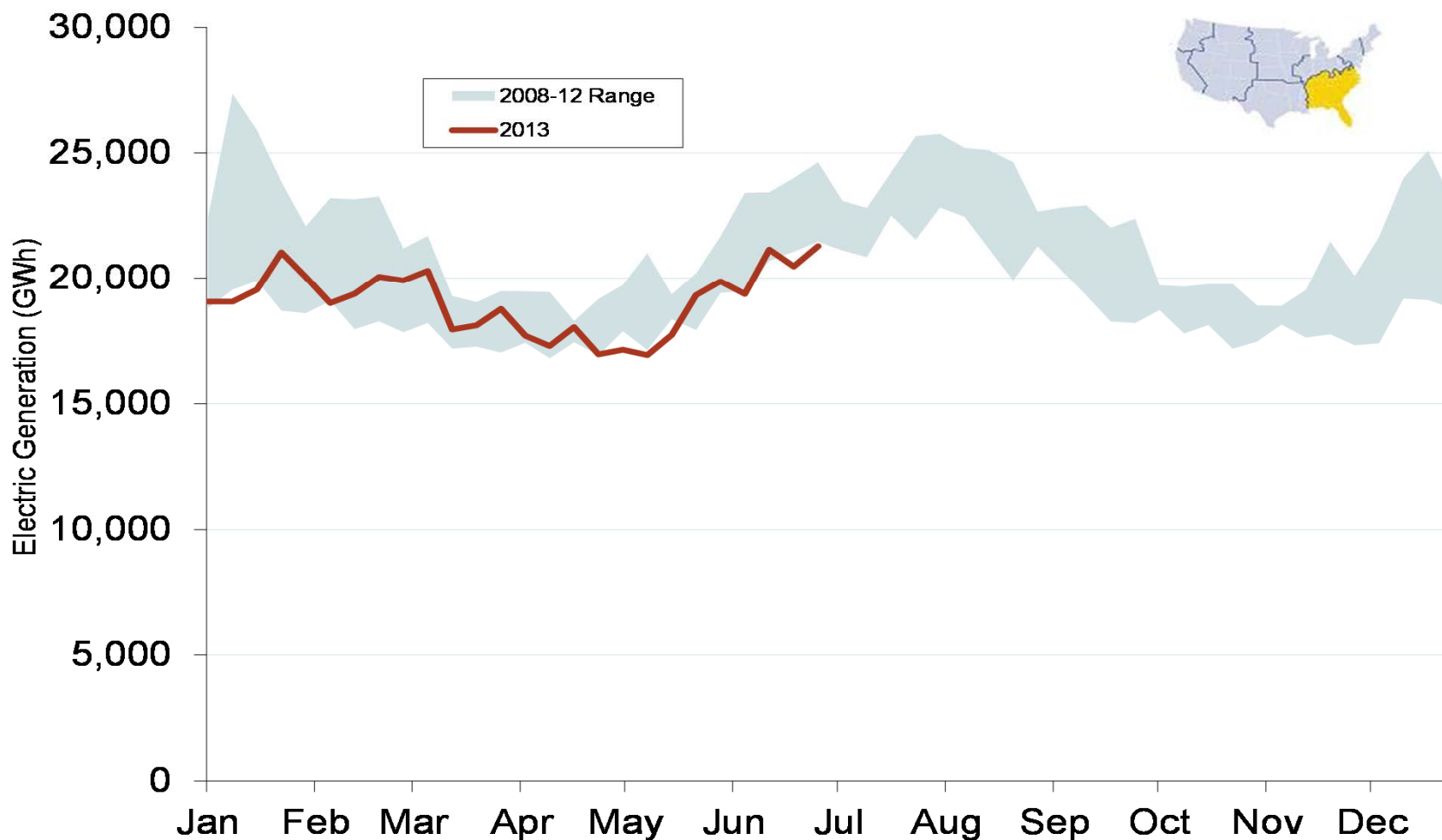
Implied Heat Rates at South Central Trading Points - Weekly Avgs.



Source: Derived from Platts on-peak electric and natural gas price data
 July 2013

Updated: July 05, 2013

Weekly Generation Output - Southeast



Monthly Southeastern Hydroelectric Generation

