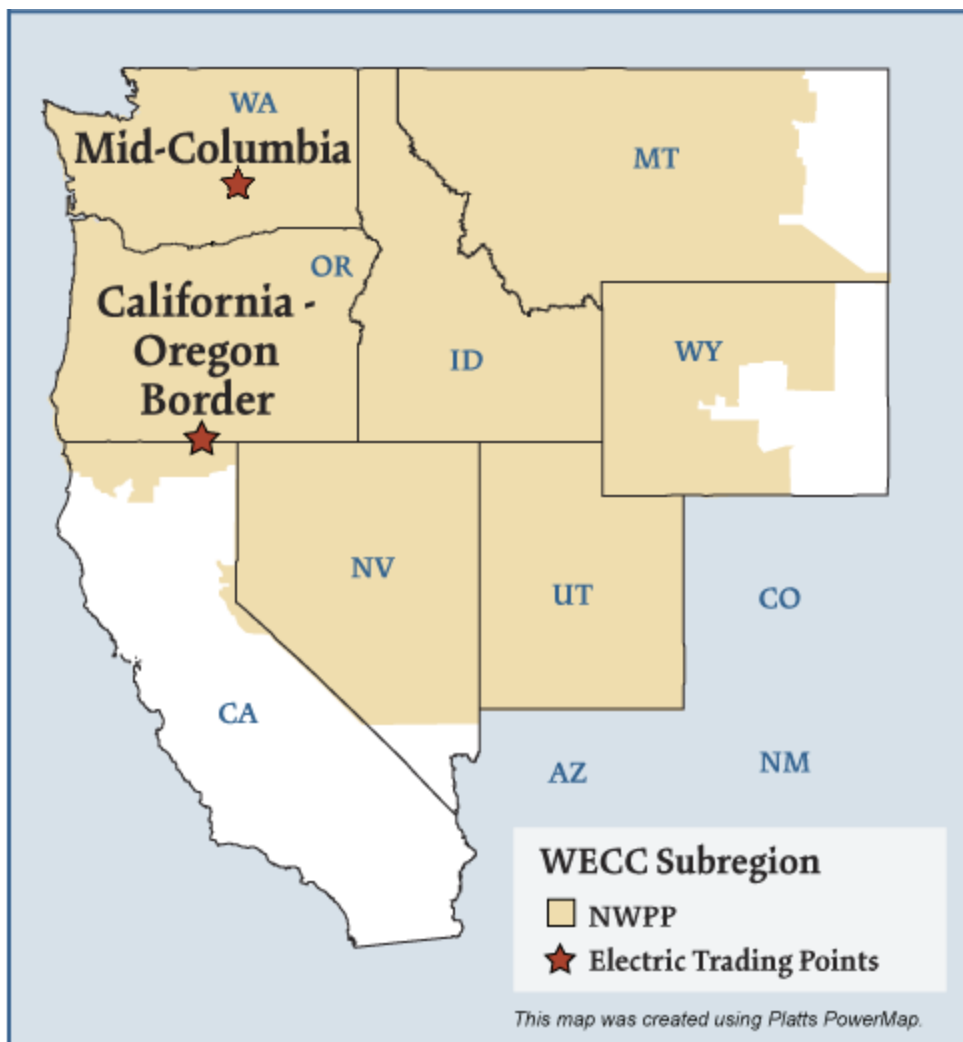


Northwest Electric Market



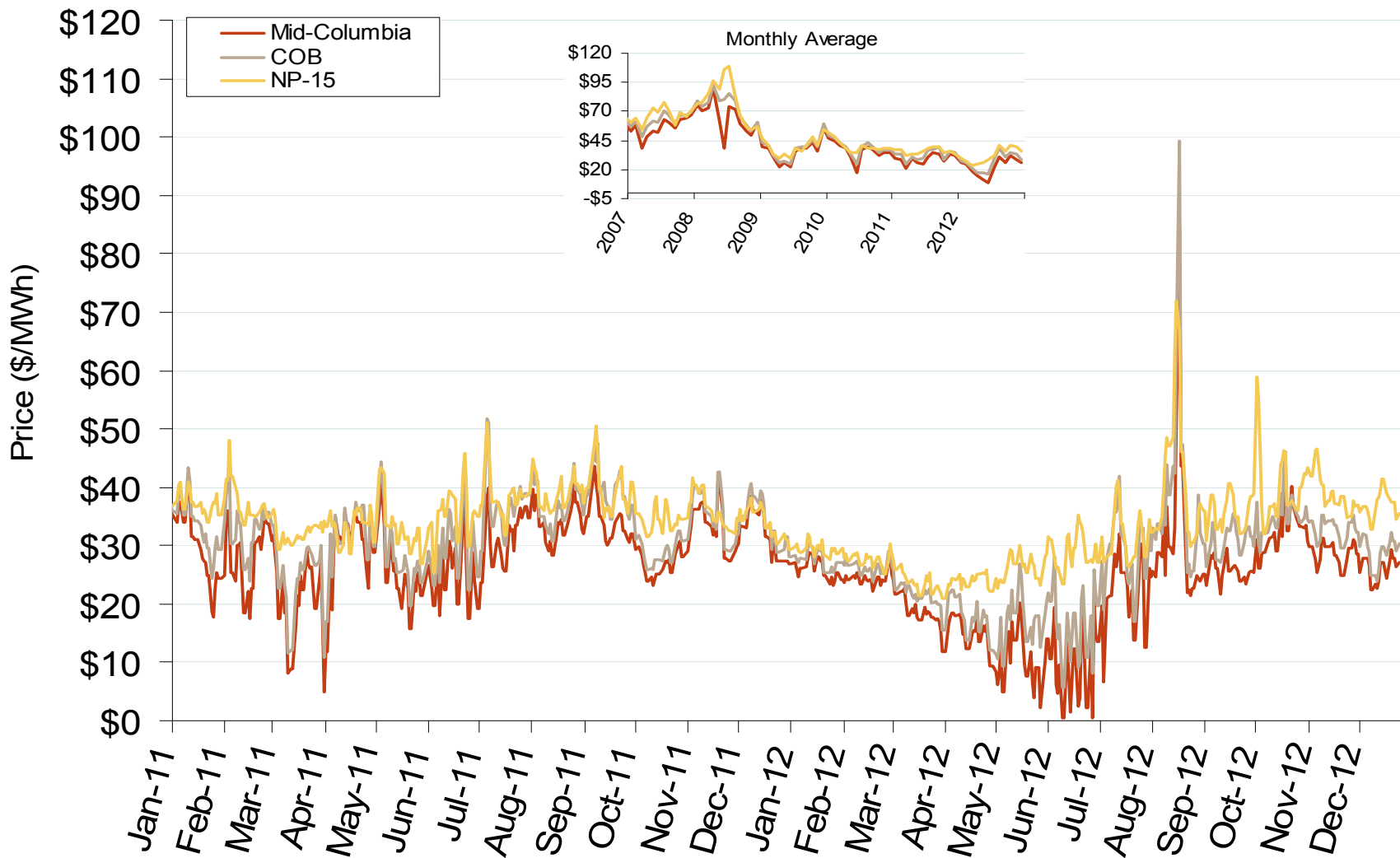
Northwest Annual Average Bilateral Prices

Annual Average Day Ahead On Peak Prices (\$/MWh)						
	2008	2009	2010	2011	2012	5-Year Avg
Mid-Columbia (Mid-C)	\$65.00	\$35.66	\$35.90	\$29.10	\$22.54	\$37.66
California-Oregon Border (COB)	\$73.86	\$38.02	\$38.84	\$32.55	\$26.79	\$42.03

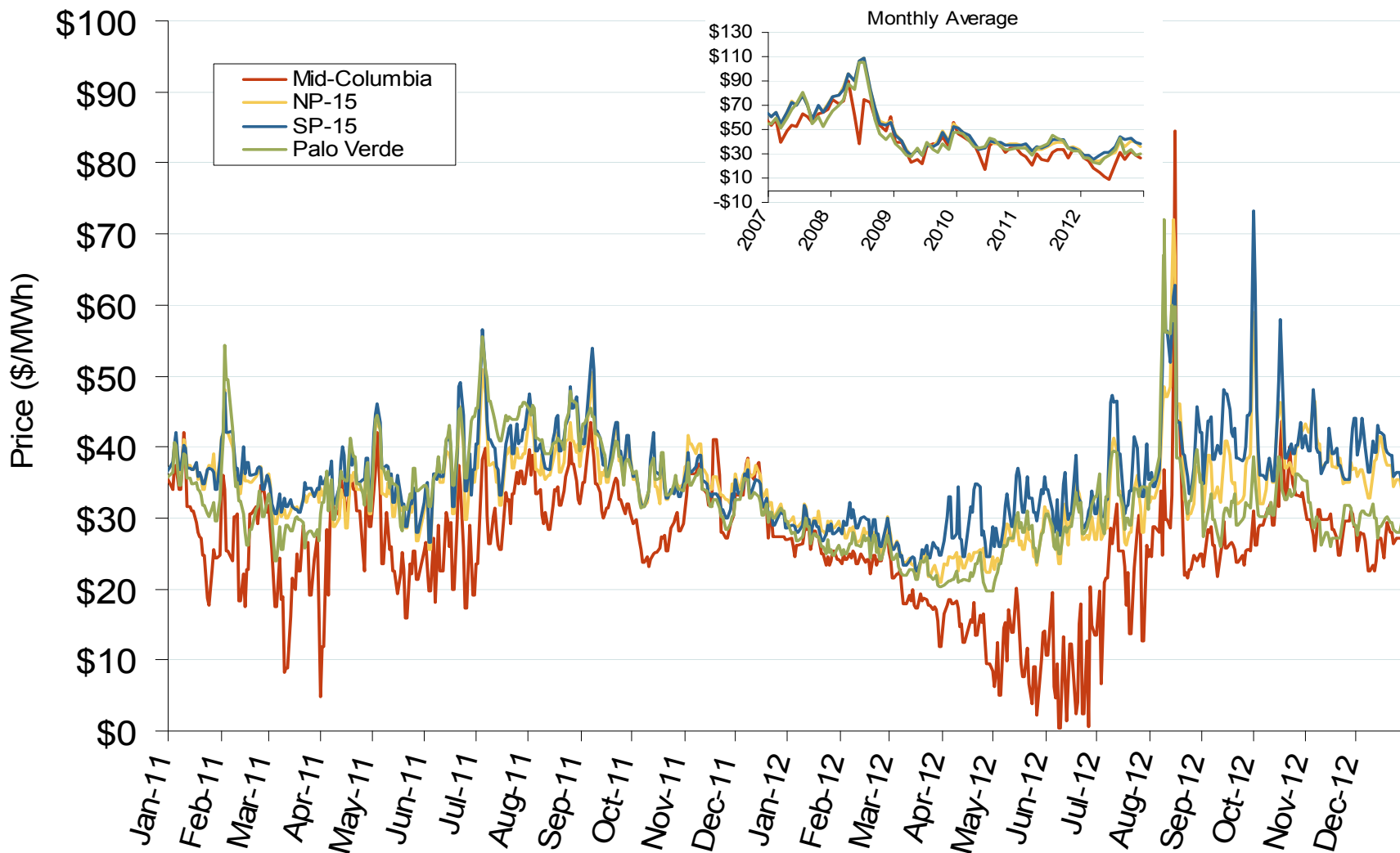
Northwest Electric Market: Northwestern Index Prices

Federal Energy Regulatory Commission • Market Oversight • www.ferc.gov/oversight

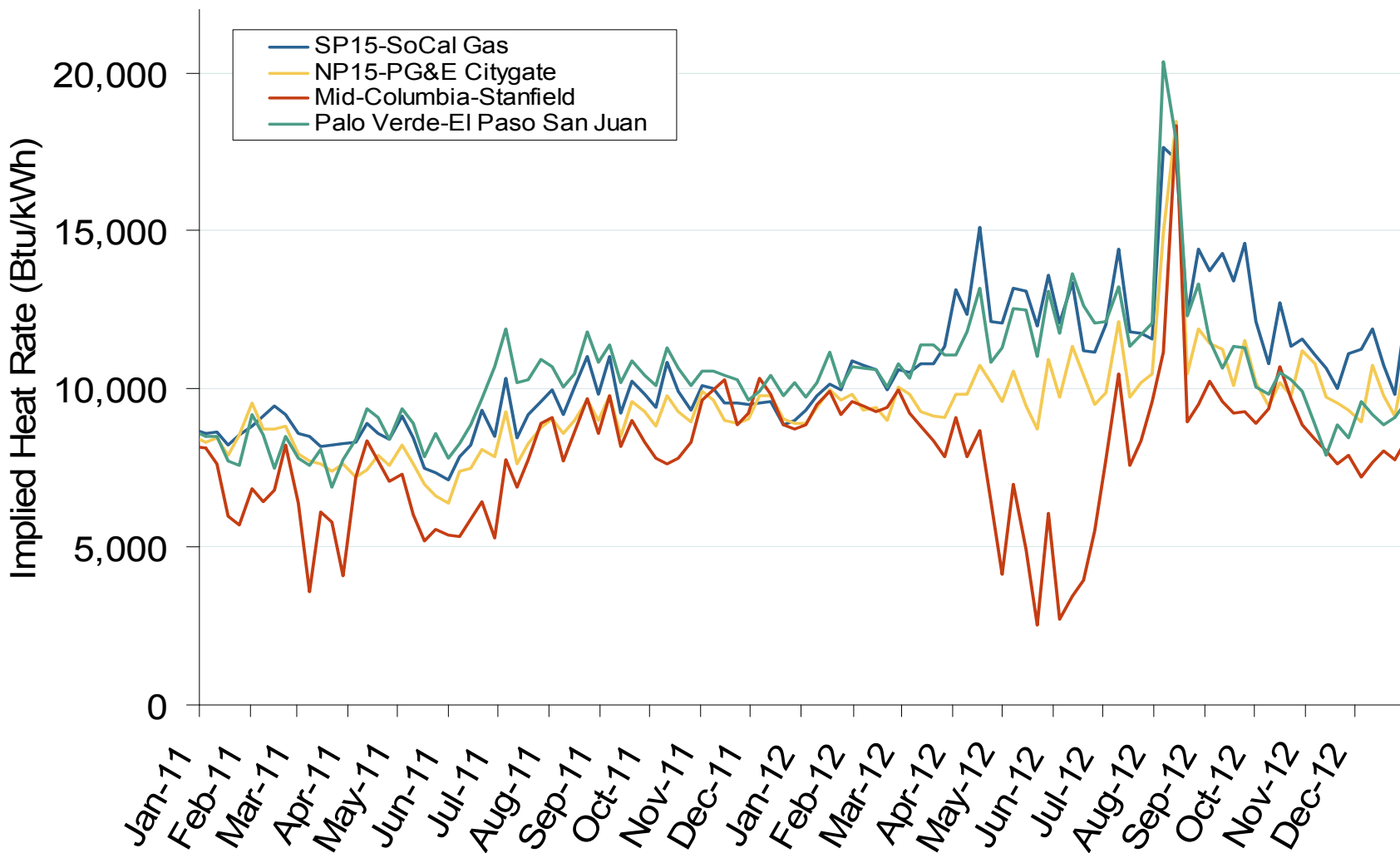
Northwestern Daily Index Day-Ahead On-Peak Prices



Western Daily Index Day-Ahead On-Peak Prices



Implied Heat Rates at Western Trading Points - Weekly Avgs.



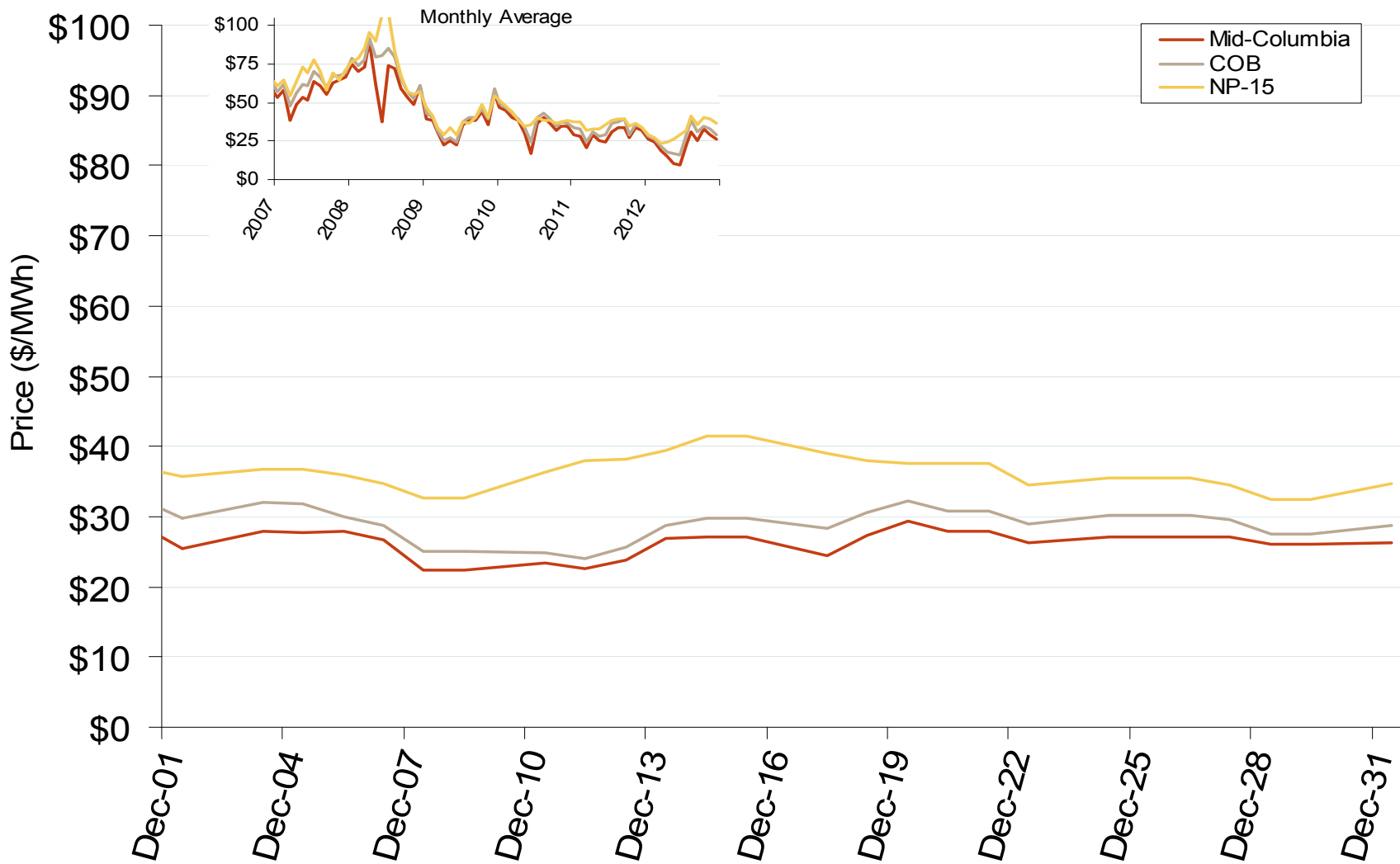
Source: Derived from *Platts* on-peak electric and natural gas price data
 January 2013

Updated: January 15, 2013

Northwest Electric Market: Last Month's Northwestern Index Prices

Federal Energy Regulatory Commission • Market Oversight • www.ferc.gov/oversight

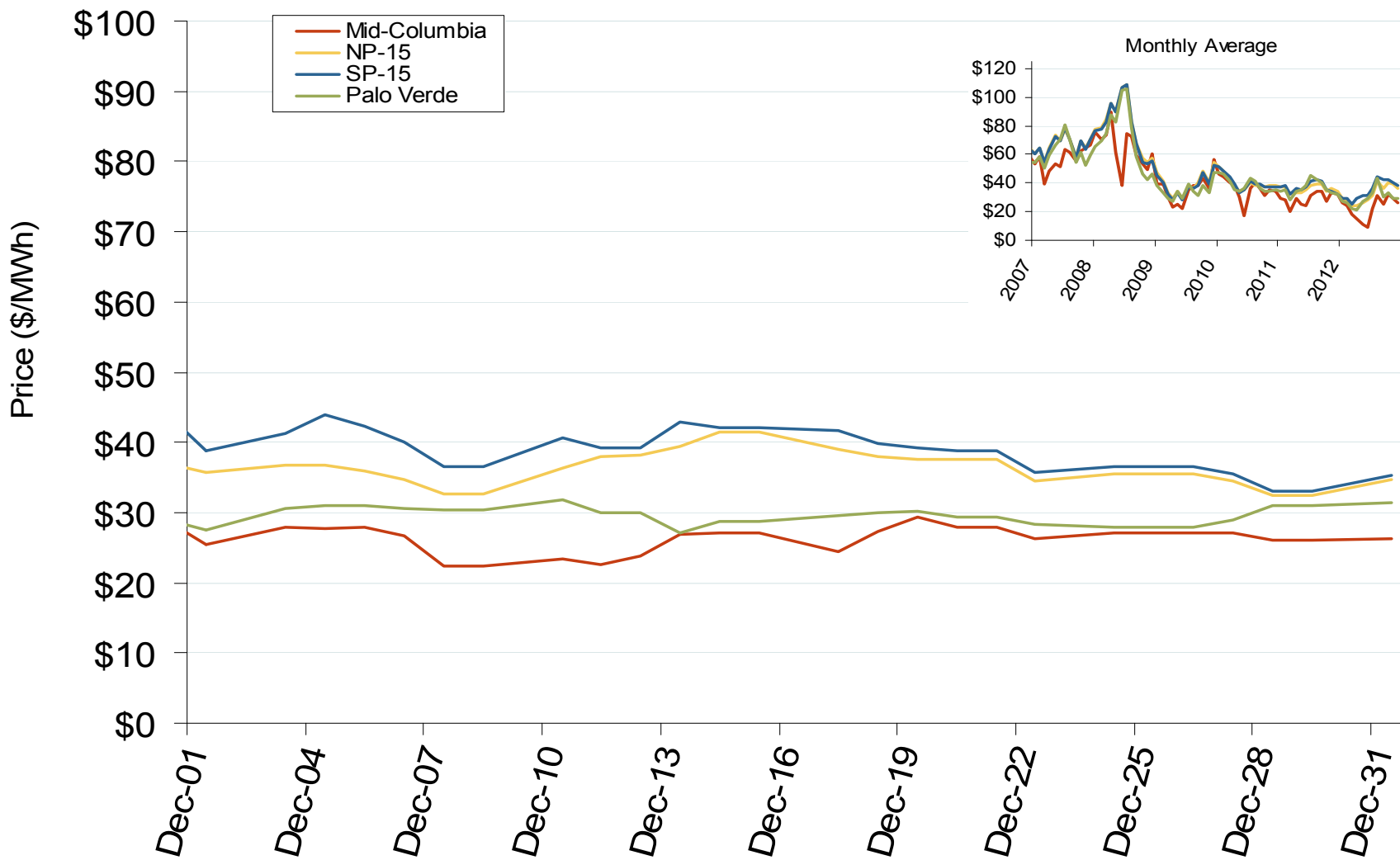
Northwestern Daily Index Day-Ahead On-Peak Prices



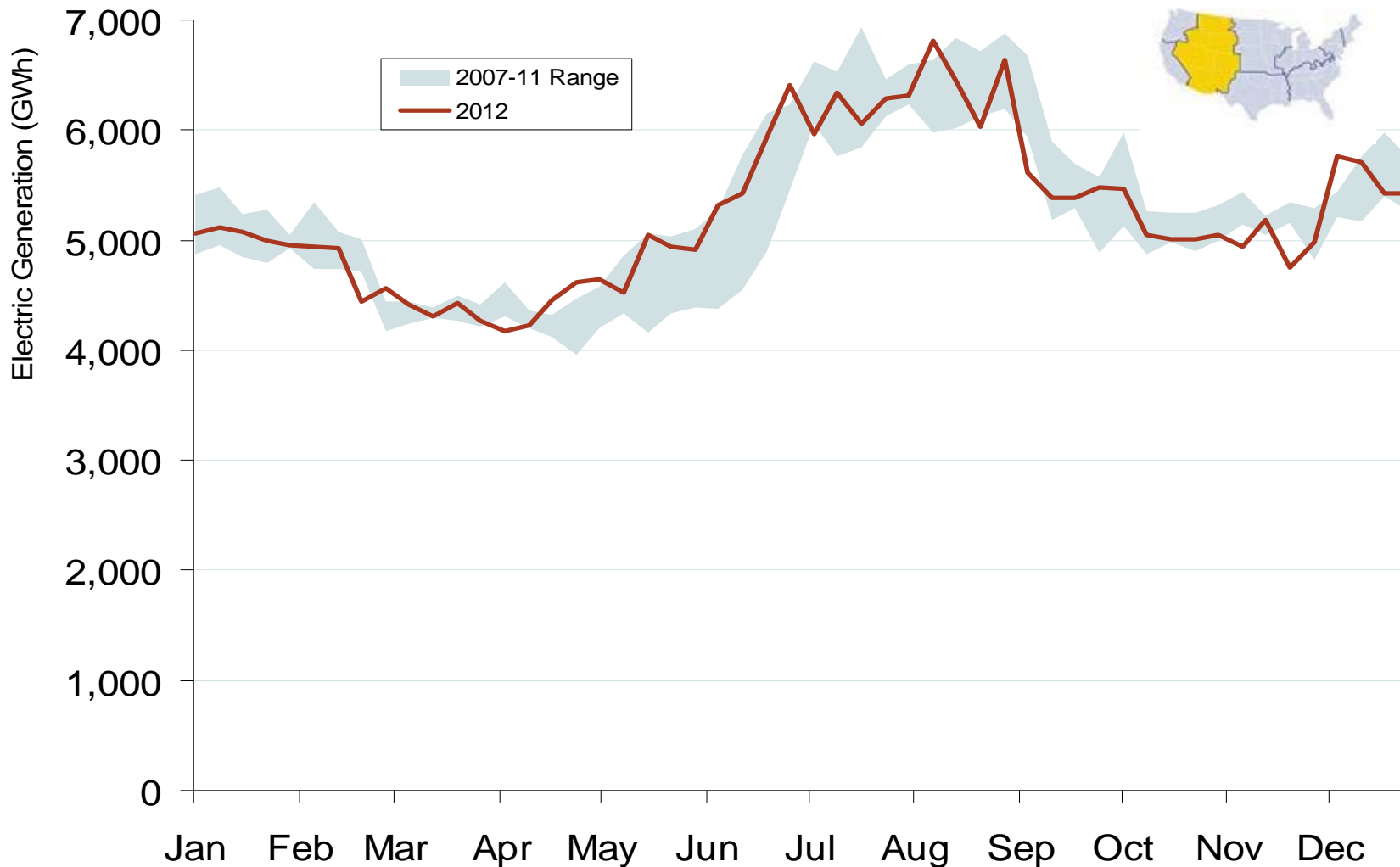
Northwest Electric Market: Last Month's Western Index Prices

Federal Energy Regulatory Commission • Market Oversight • www.ferc.gov/oversight

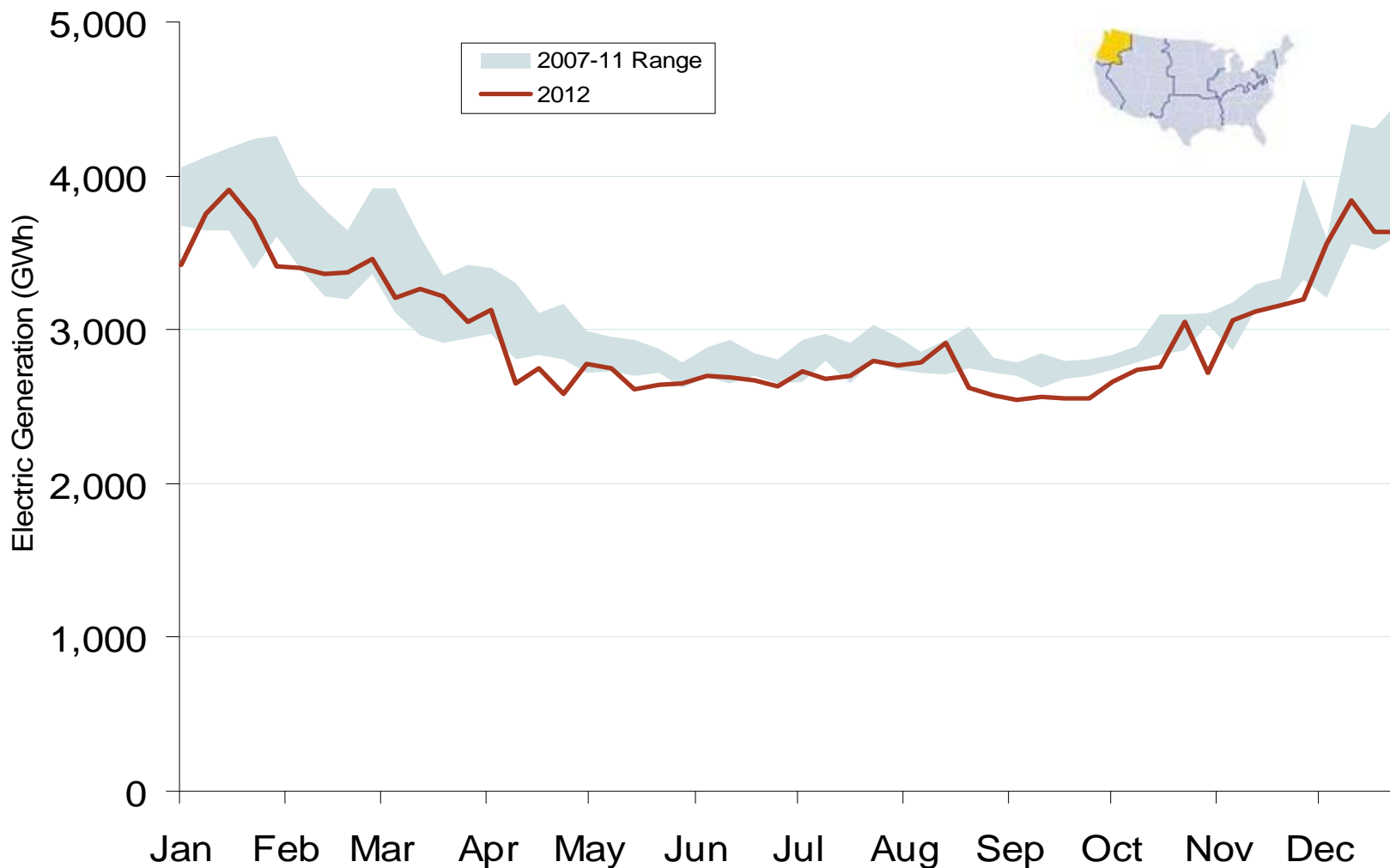
Western Daily Index Day-Ahead On-Peak Prices



Weekly Generation Output - Rocky Mountains



Weekly Generation Output - Pacific Northwest



Pacific/Northwest Hydro and Snowpack Levels

	Hydro Generation		Snow Water Equivalent ³		
	In-State Capacity (MW ¹)	Additional Capacity Created Downstream (MW ²)	One Month Ago (12/1/2012) (% of historical median)	Current (1/1/2013) (% of historical median)	Change from One Year Ago
Washington	21,500	0	95%	148%	51%
Oregon	9,100	0	45%	111%	63%
California	10,400	0	192%	181%	164%
Idaho	2,700	19,700	91%	103%	22%
Montana	2,700	16,200	86%	103%	20%

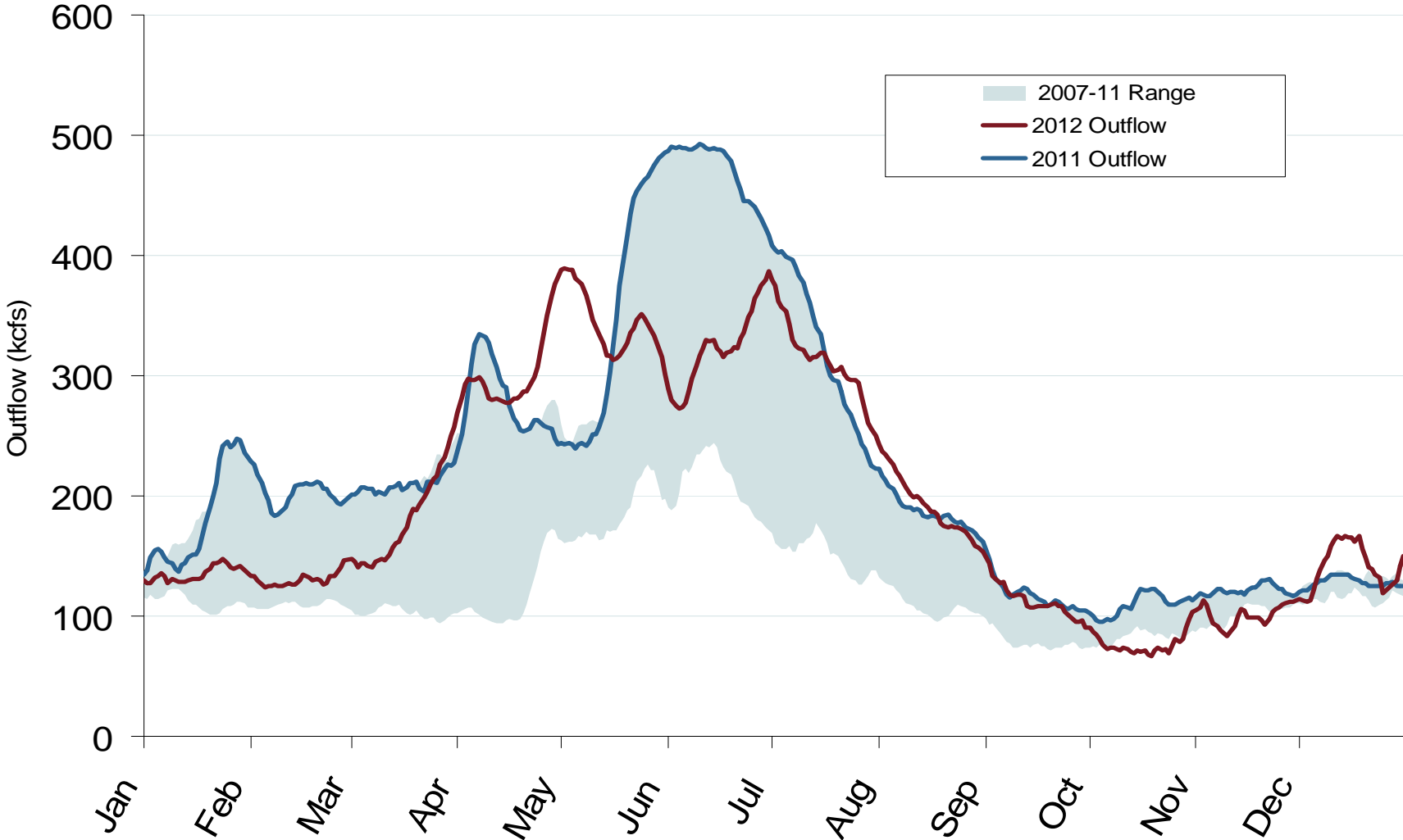
Notes:

1 Net summer capacity in megawatts by state (EIA)

2 Approximate electric capacity created by water flow through downstream states (EIA and BPA). The capacity estimates reflect water flow patterns of the series of hydro facilities on the Snake and Columbia rivers.

3 Snow Water Equivalent represents the depth of water in the snowpack, if the snowpack were melted, expressed in inches. The percentage of median is the ratio of current snow water equivalents compared to the median for the same day f 1981-2010. Source: U.S. Department of Agriculture Natural Resources Conservation Service.

Stream Flows at the Dalles Dam



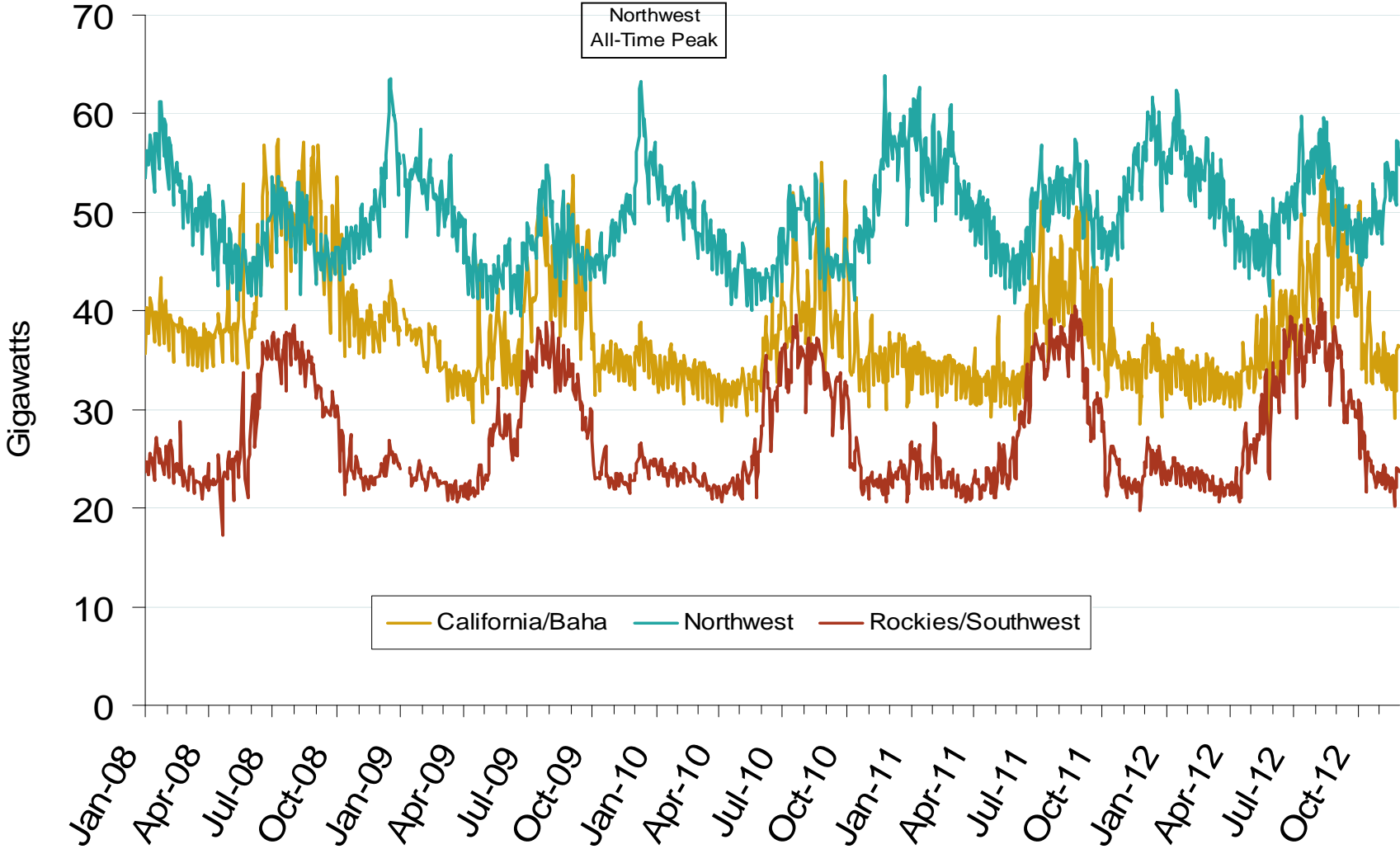
Notes: Trend lines are 7-day moving averages

Source: Derived from USACE data

January 2013

Updated: January 6, 2013

Western Daily Actual Peak Demand



Notes: Data does not include weekends and holidays. Some data for 12/31/2008 – 1/9/2009 are not available from WECC

Source: Derived from WECC Daily Report data available at <http://wecc.biz>