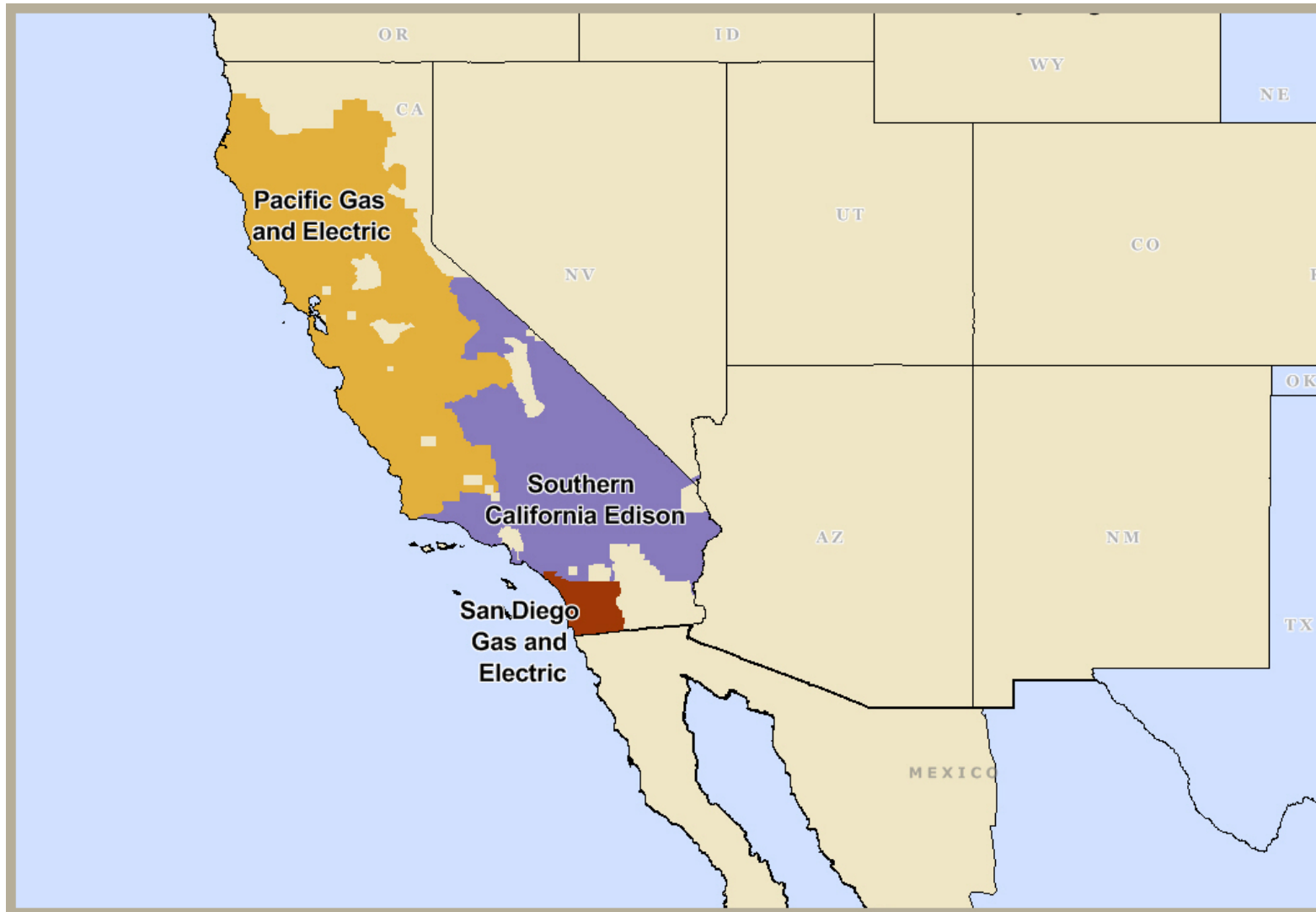


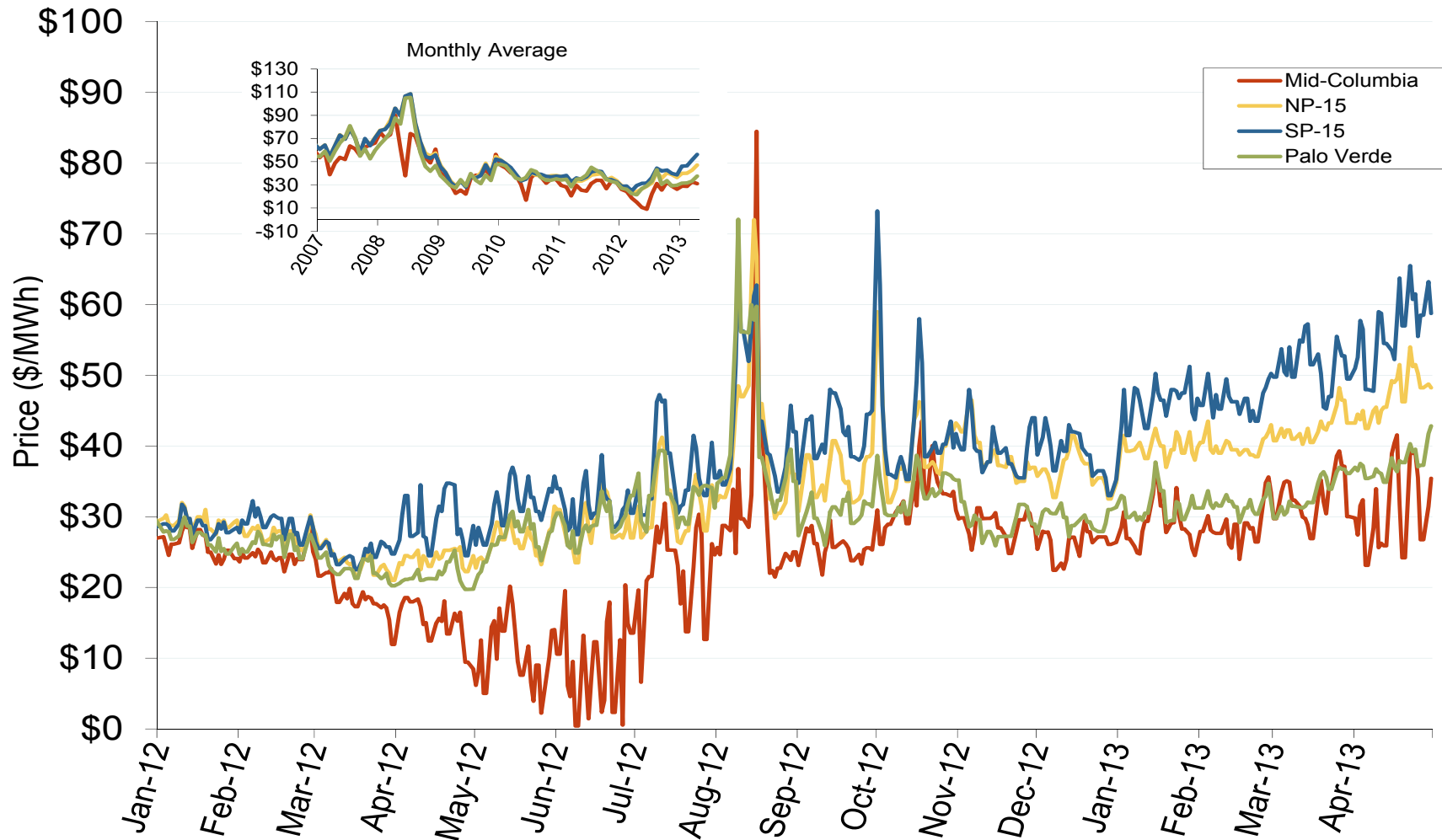
## California Independent System Operator (CAISO)



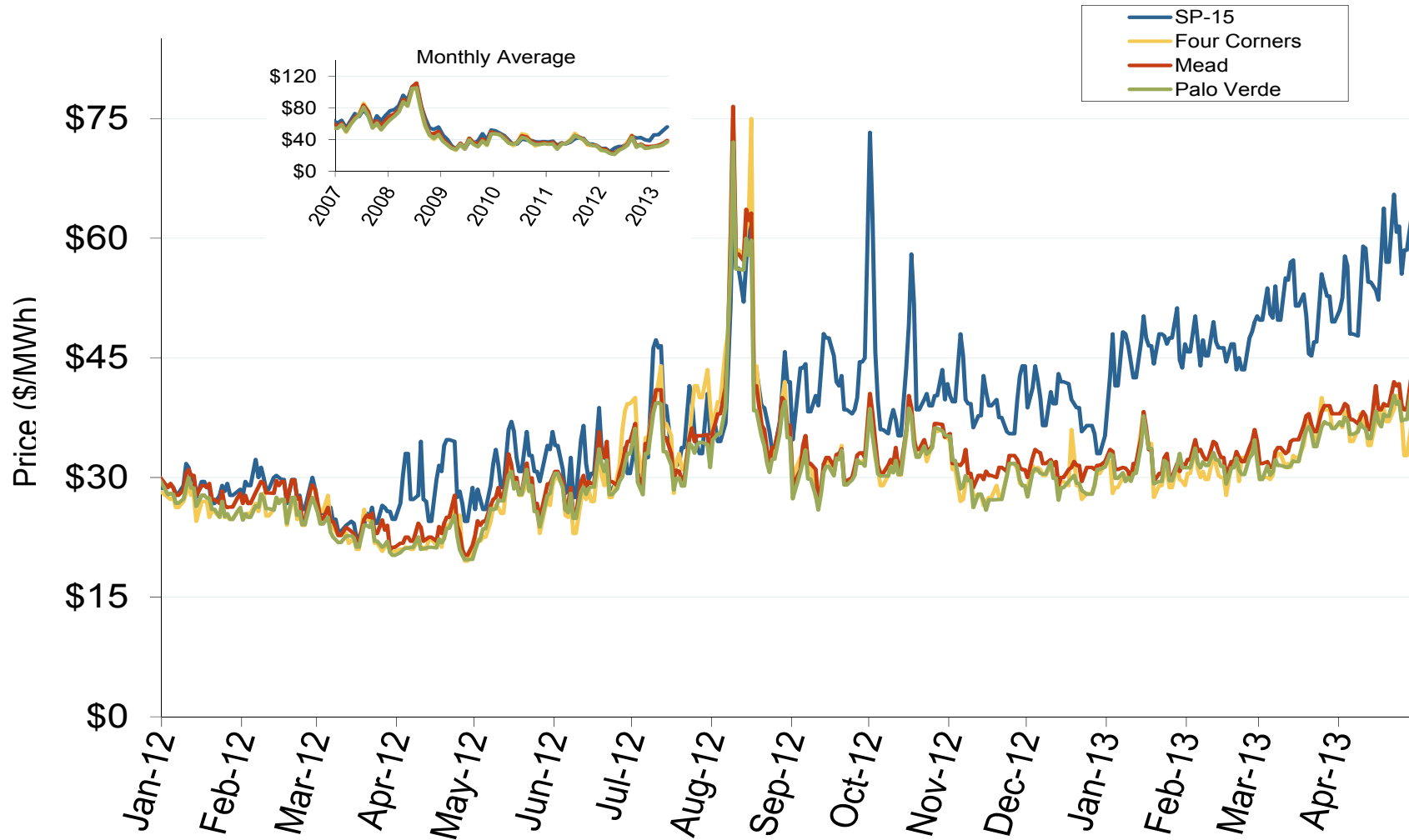
## California Annual Average Bilateral Prices

Annual Average Day Ahead On Peak Prices (\$/MWh)						
	2008	2009	2010	2011	2012	5-Year Avg
NP15	\$80.14	\$39.29	\$40.08	\$35.81	\$32.02	\$45.49
SP15	\$79.36	\$38.31	\$40.21	\$36.87	\$34.91	\$45.96

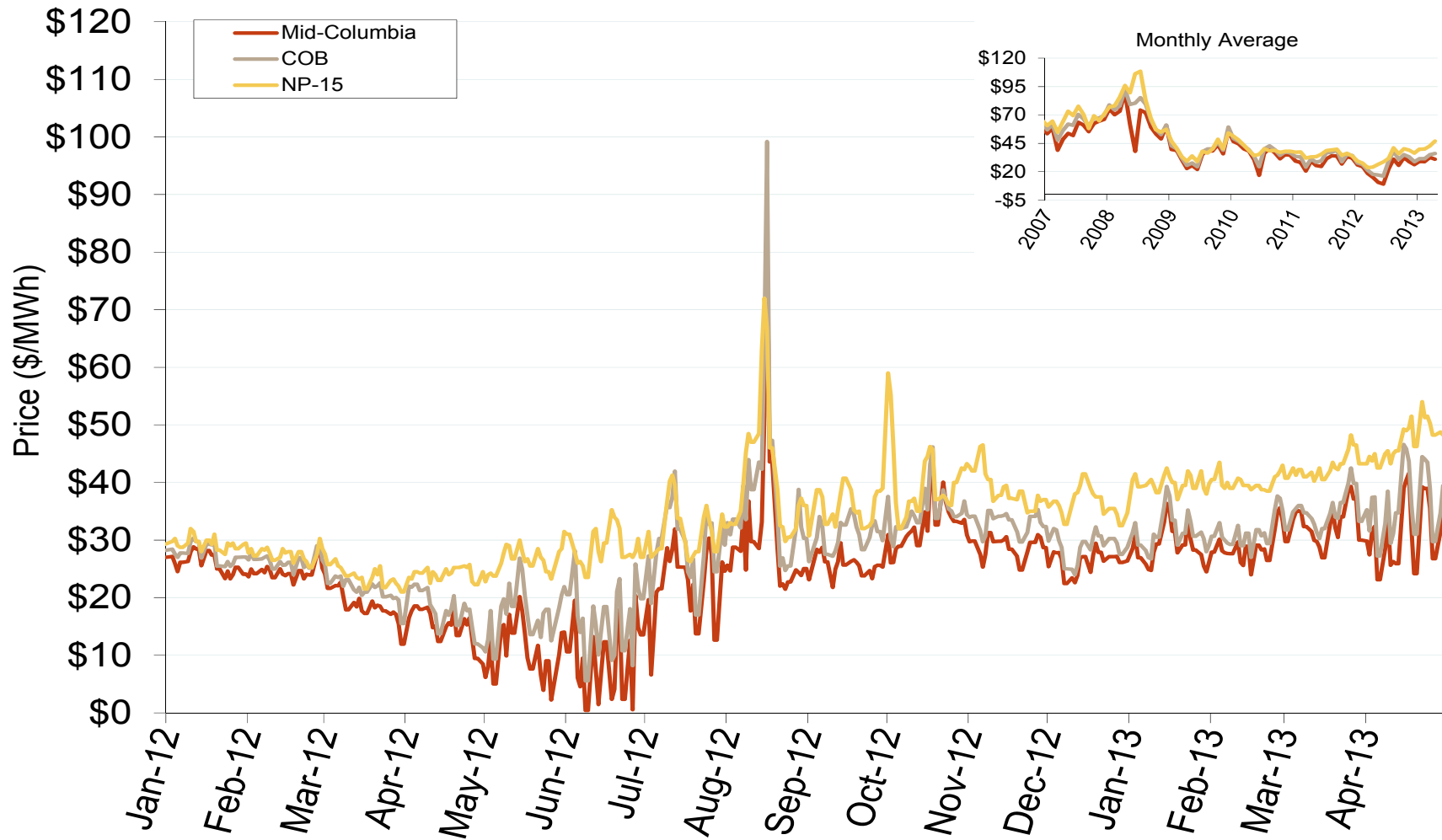
## Western Daily Index Day-Ahead On-Peak Prices



## Southwestern Daily Index Day-Ahead On-Peak Prices

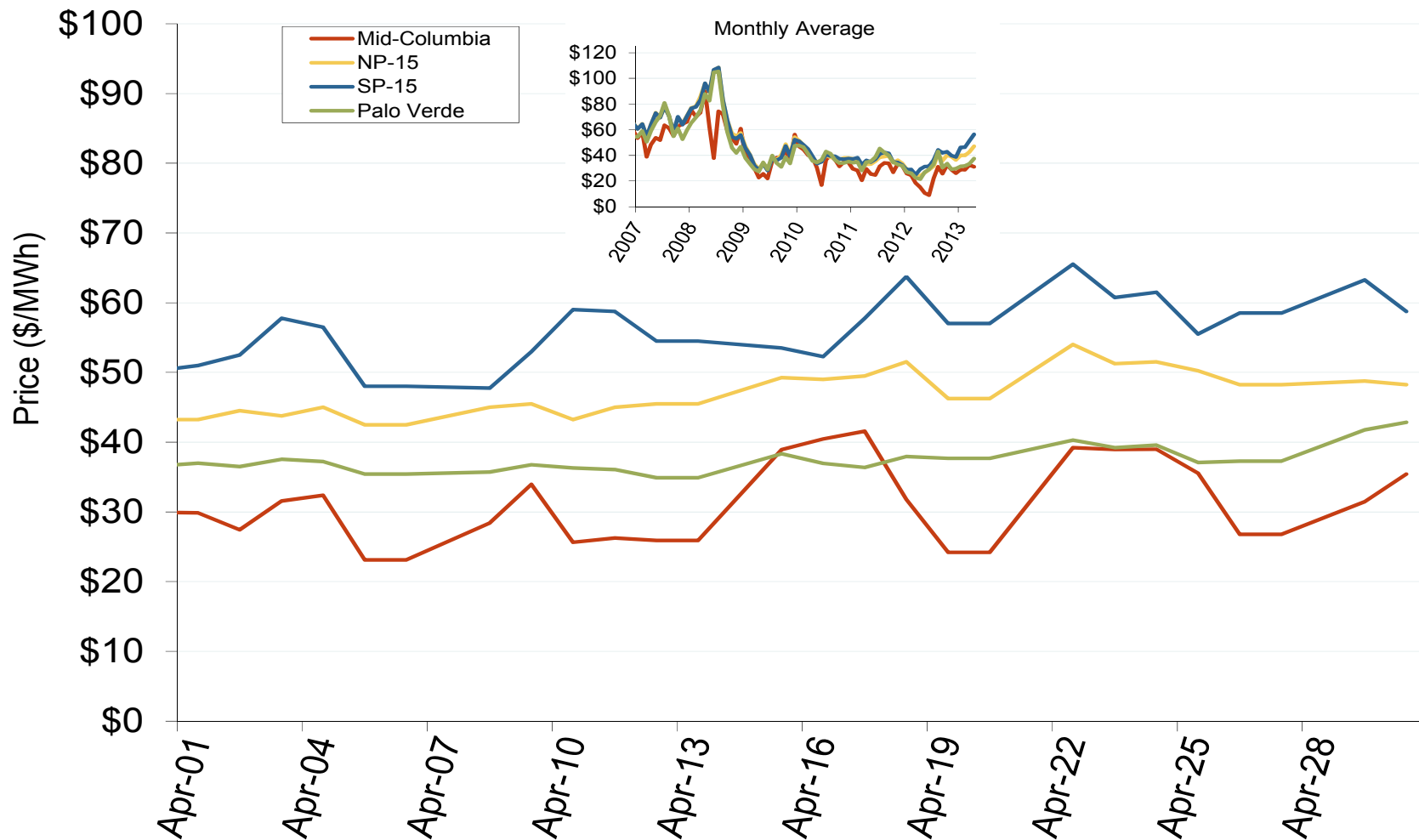


## Northwestern Daily Index Day-Ahead On-Peak Prices

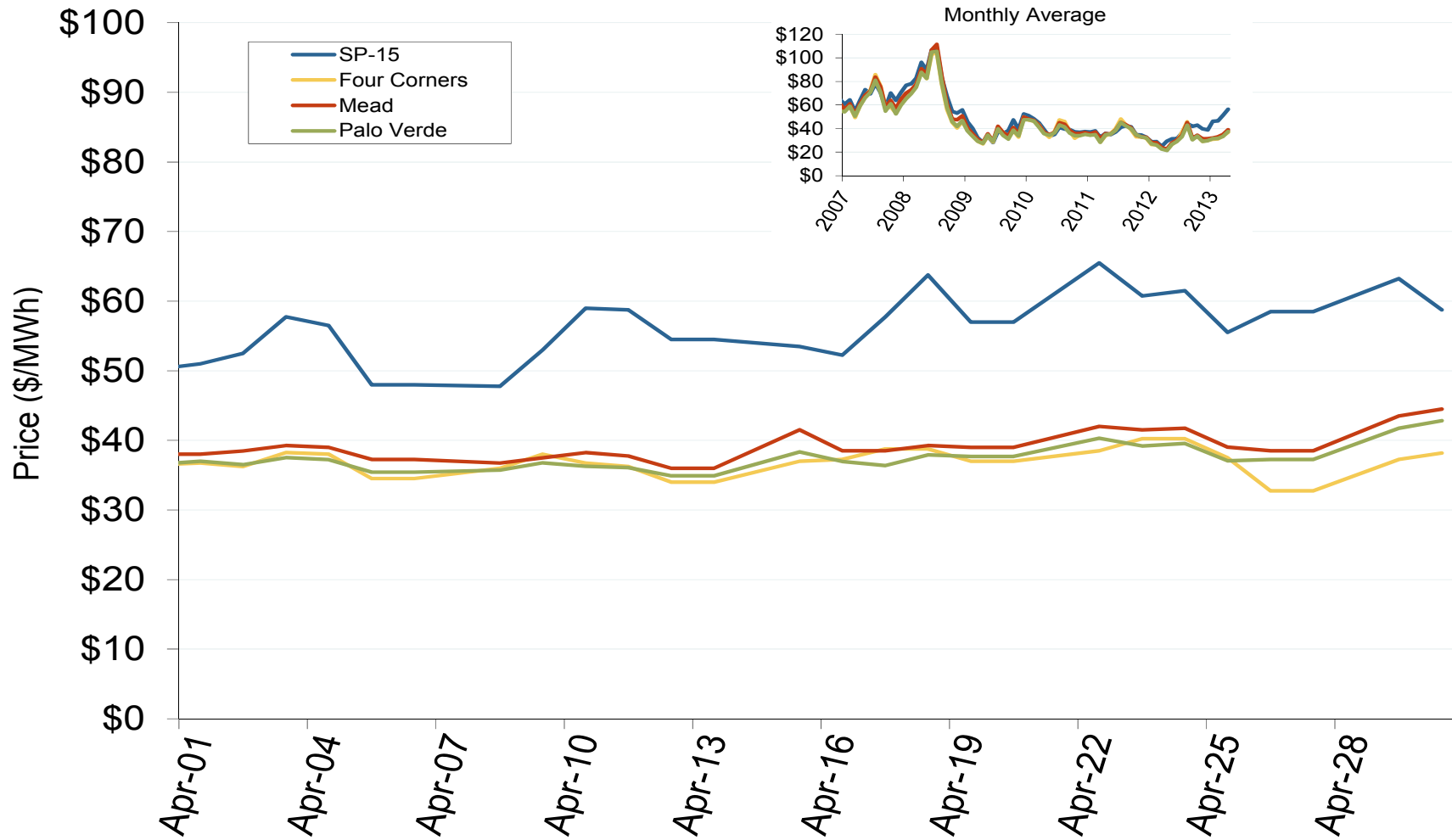


Source: Derived from *Platts* data

## Western Daily Index Day-Ahead On-Peak Prices



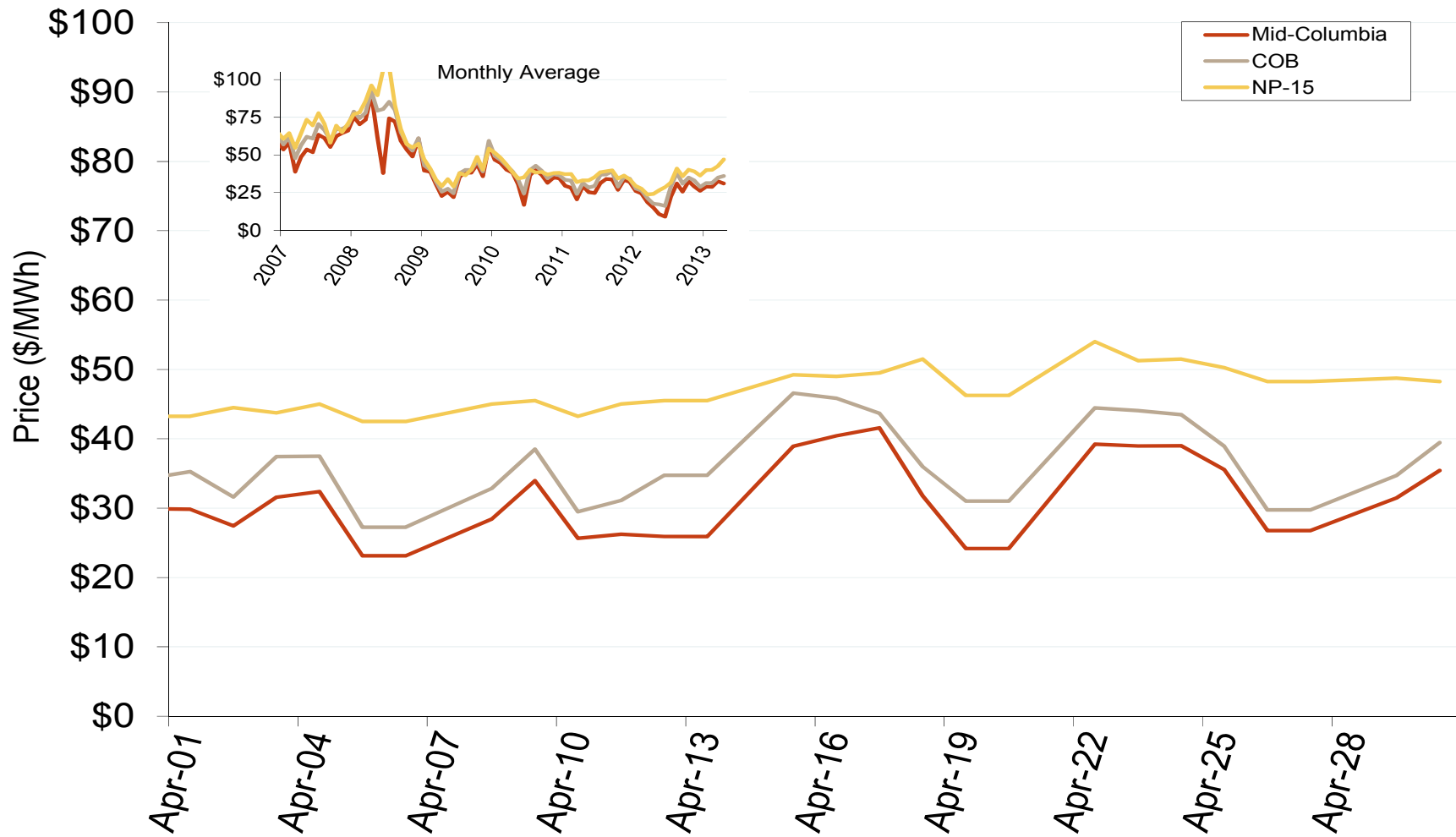
## Southwestern Daily Index Day-Ahead On-Peak Prices



California Electric Market: Last Month's Northwestern Index Prices

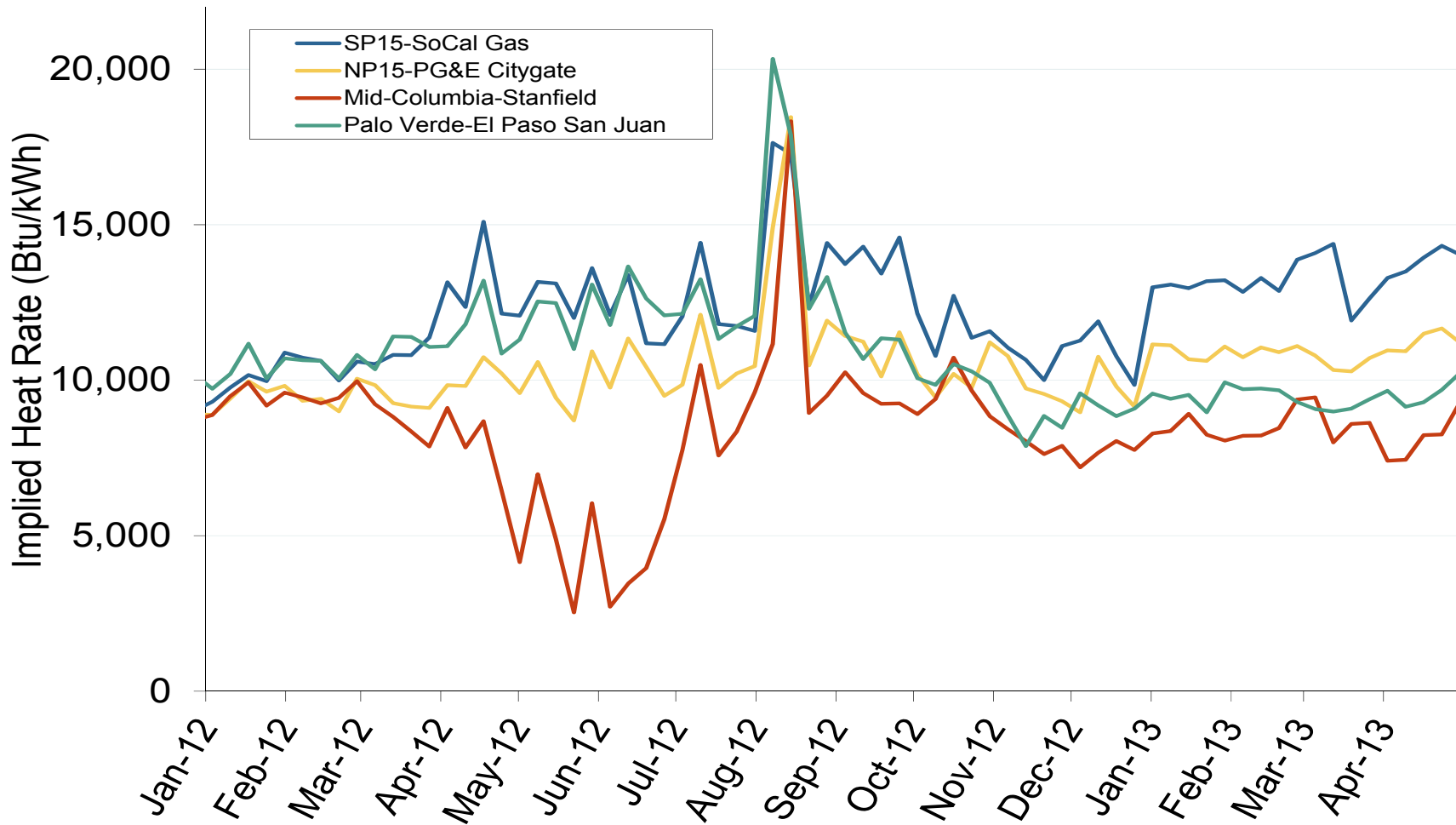
Federal Energy Regulatory Commission • Market Oversight • [www.ferc.gov/oversight](http://www.ferc.gov/oversight)

## Northwestern Daily Index Day-Ahead On-Peak Prices





## Implied Heat Rates at Western Trading Points - Weekly Avgs.

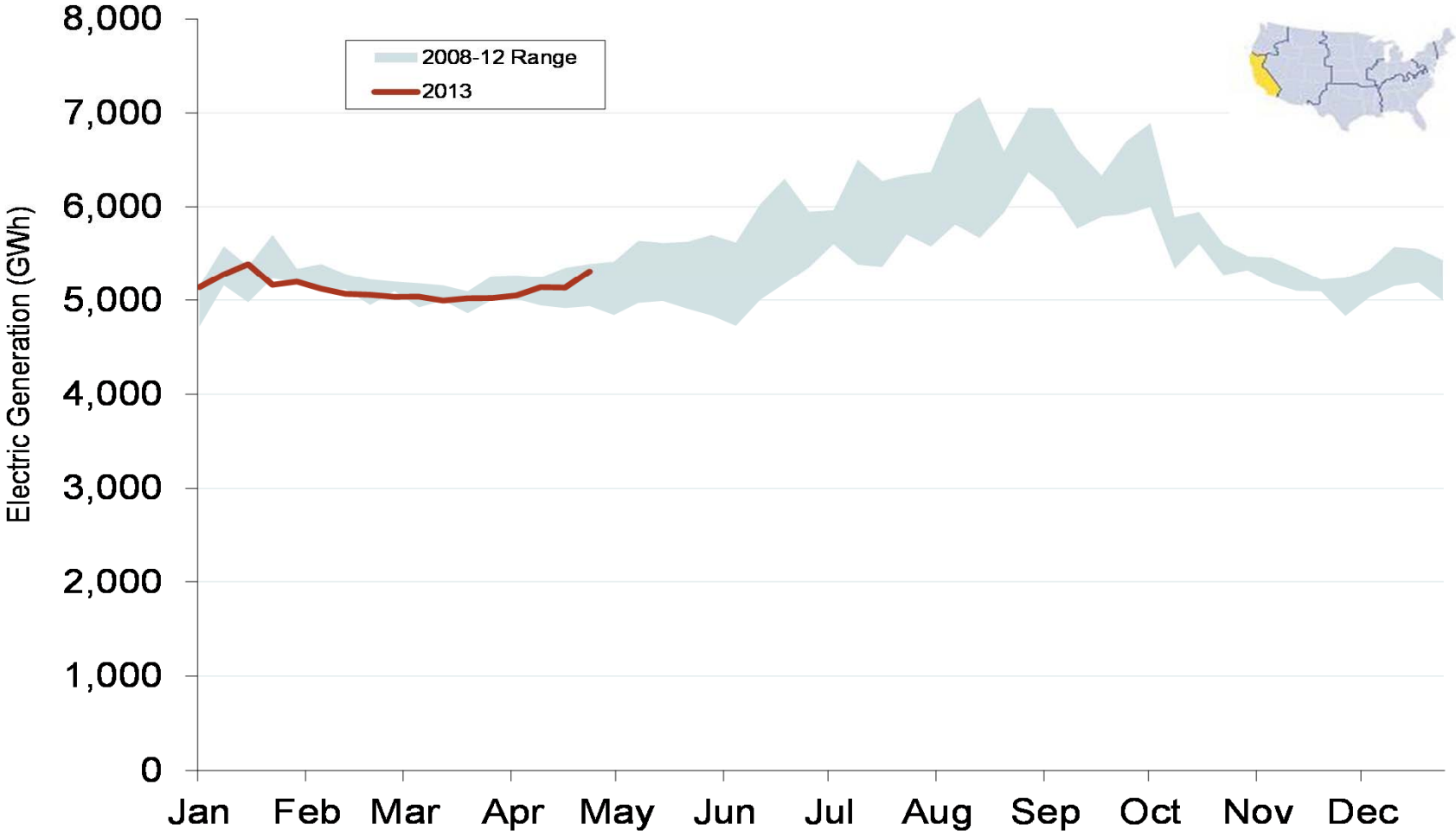


Note: ICE on-peak forward (physical) and swap (financial) volumes are for Mid-Columbia and include monthly, dual monthly, quarterly, and calendar year contracts traded for each month.

Source: Derived from *Platts* on-peak electric and natural gas price data  
 May 2013

Updated: May 22, 2013

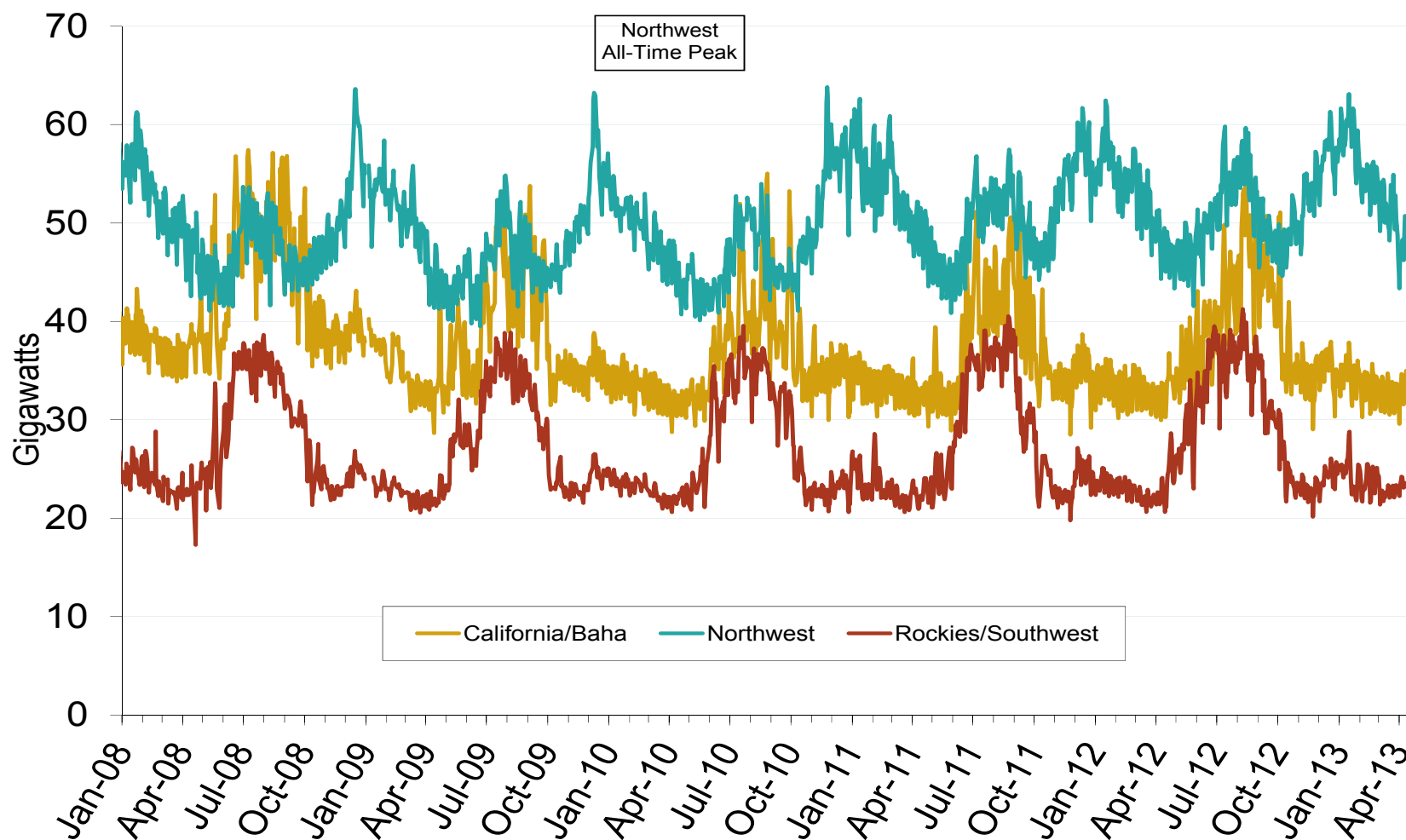
# Weekly Generation Output - California



Source: Derived from EEI data  
May 2013

Updated: May 23, 2013

## California Electric Market: Daily Peak Demand

Federal Energy Regulatory Commission • Market Oversight • [www.ferc.gov/oversight](http://www.ferc.gov/oversight)**Western Daily Actual Peak Demand**Source: Derived from WECC Daily Report data available at <http://wecc.biz>

Notes: Data prior to 9/14/2010 does not include weekends and holidays. Some data for 12/31/2008 – 1/9/2009 are not available from WECC

Updated: May 24, 2013