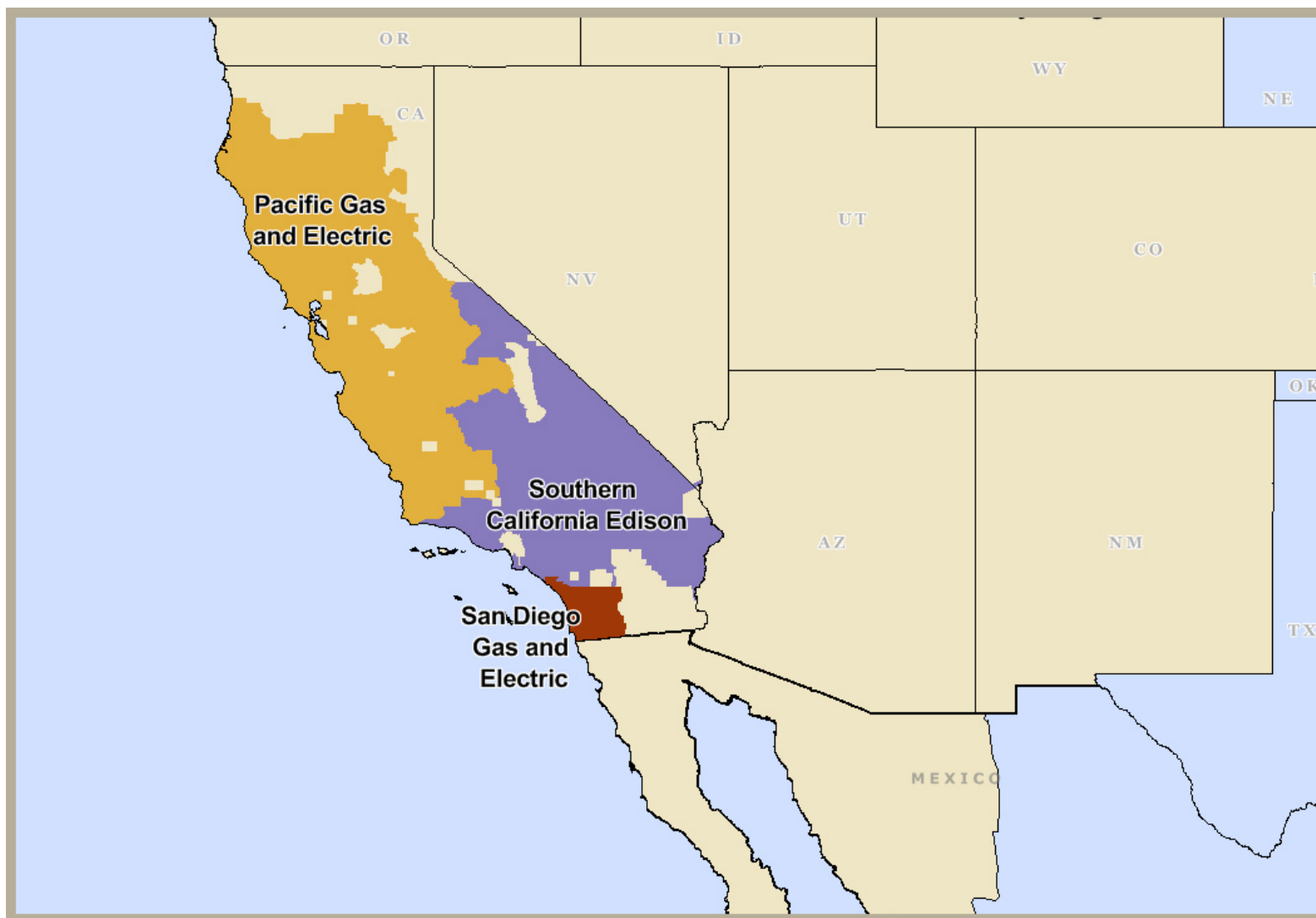


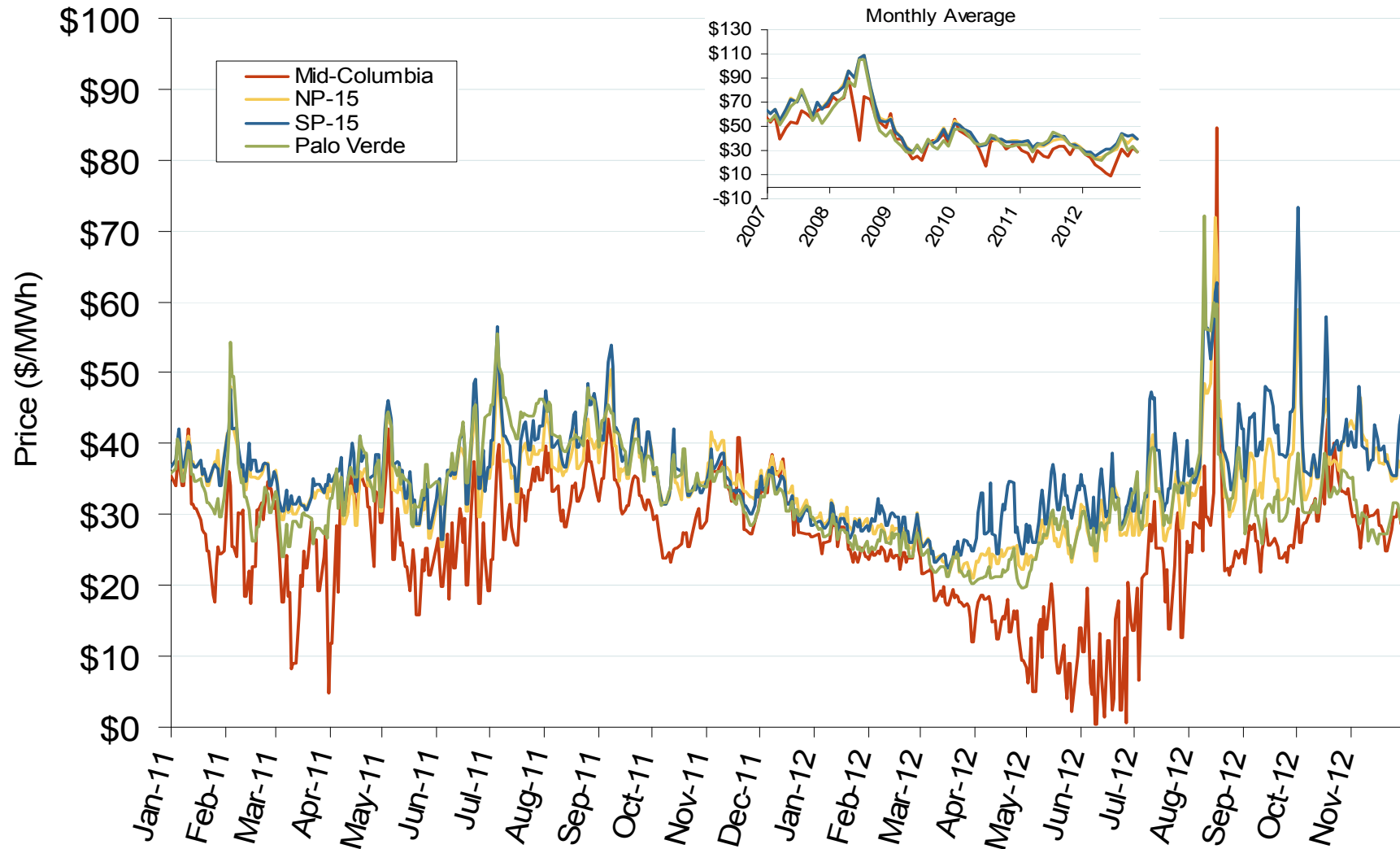
## California Independent System Operator (CAISO)



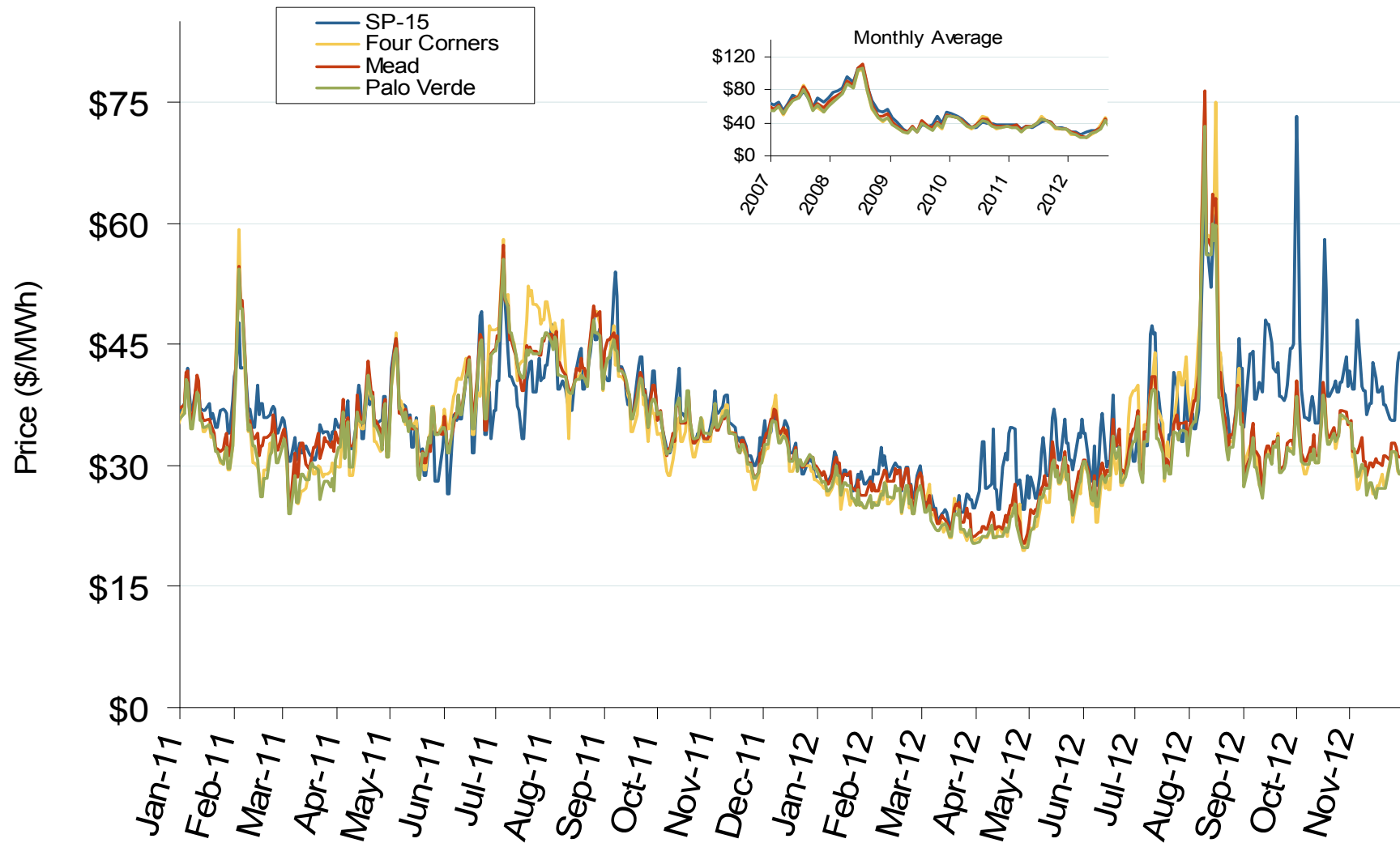
## California Annual Average Bilateral Prices

Annual Average Day Ahead On Peak Prices (\$/MWh)						
	2007	2008	2009	2010	2011	5-Year Avg
NP15	\$66.59	\$80.14	\$39.29	\$40.08	\$35.83	\$57.45
SP15	\$66.48	\$79.36	\$38.31	\$40.21	\$36.90	\$57.28

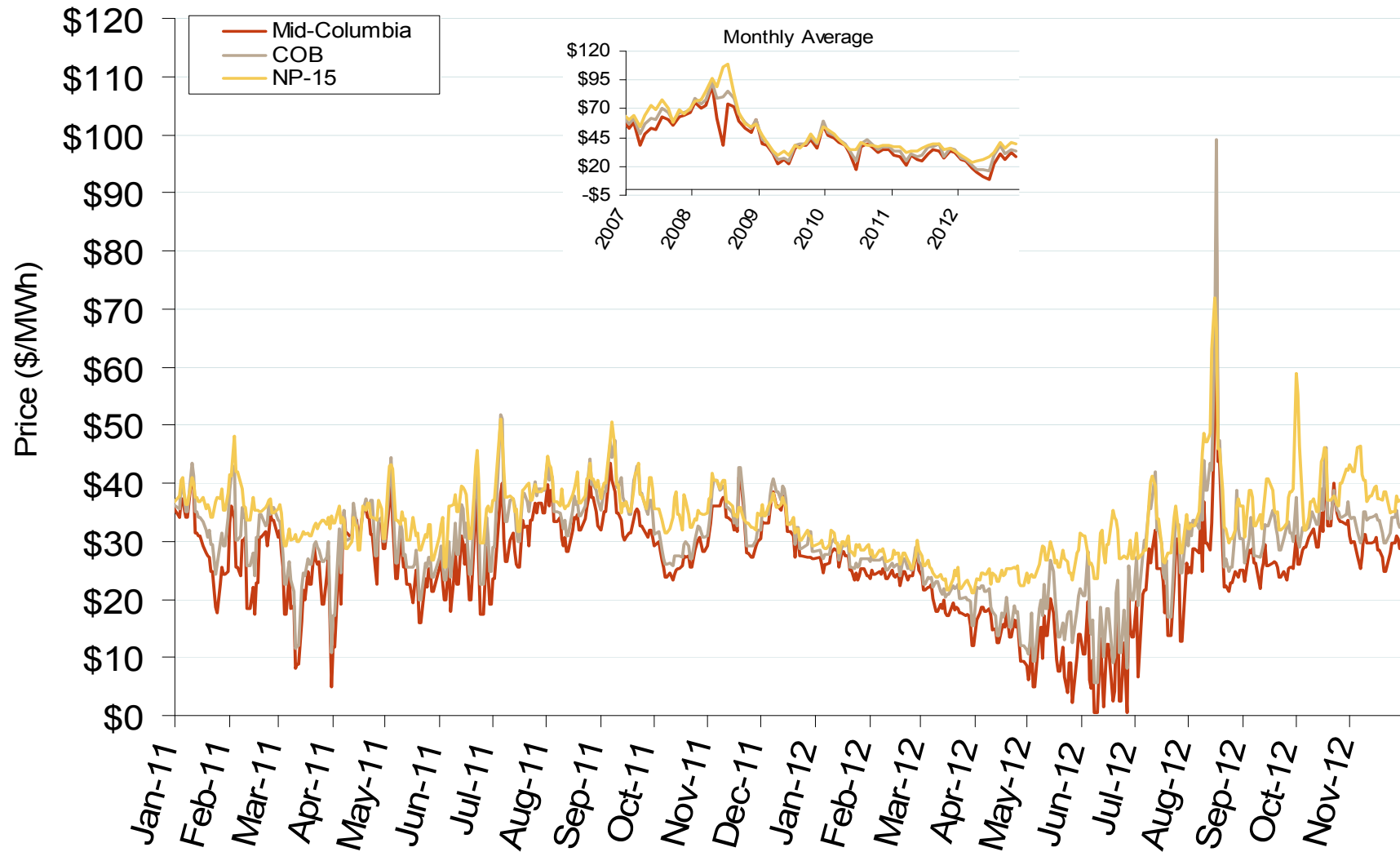
## Western Daily Index Day-Ahead On-Peak Prices



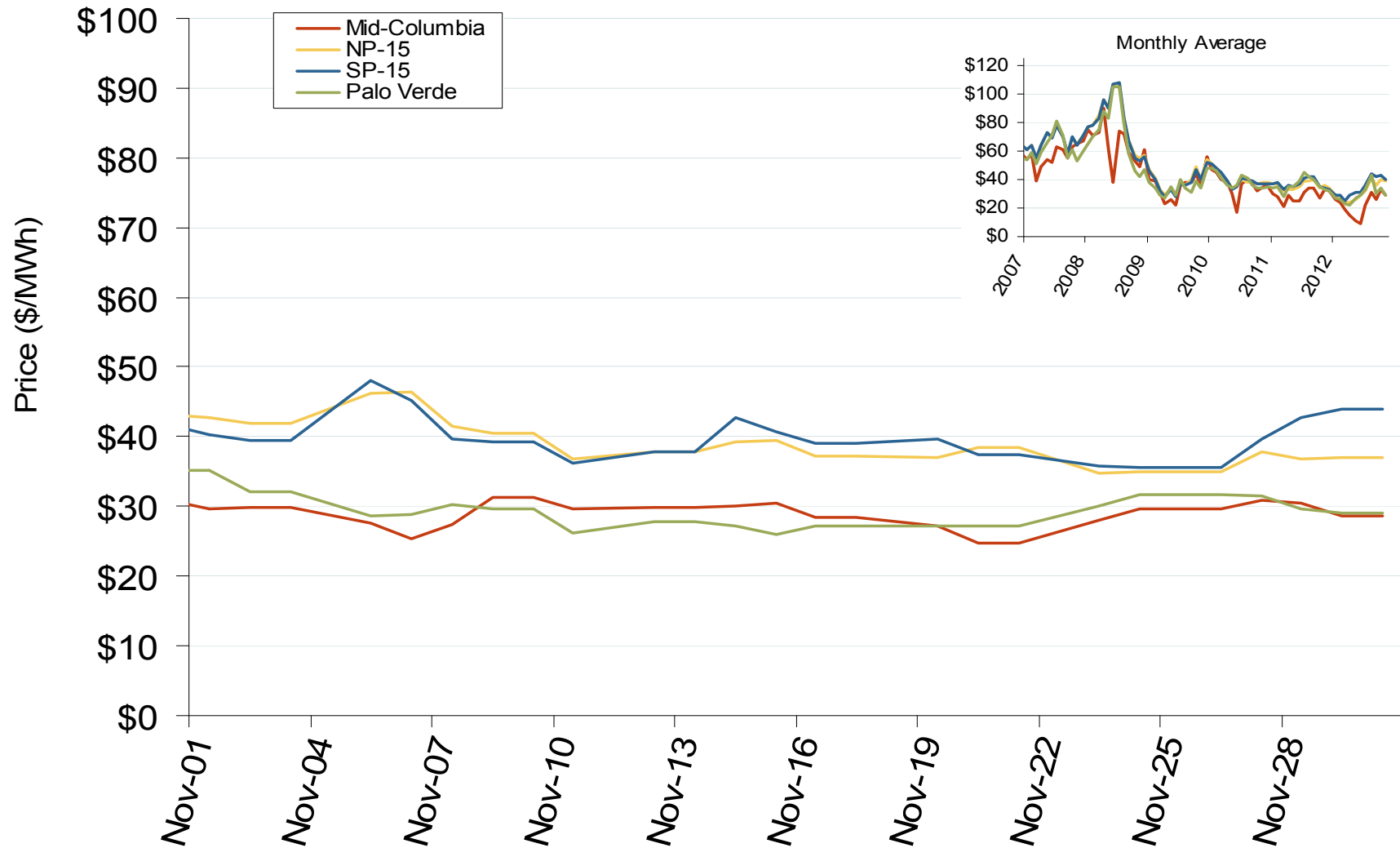
## Southwestern Daily Index Day-Ahead On-Peak Prices



## Northwestern Daily Index Day-Ahead On-Peak Prices

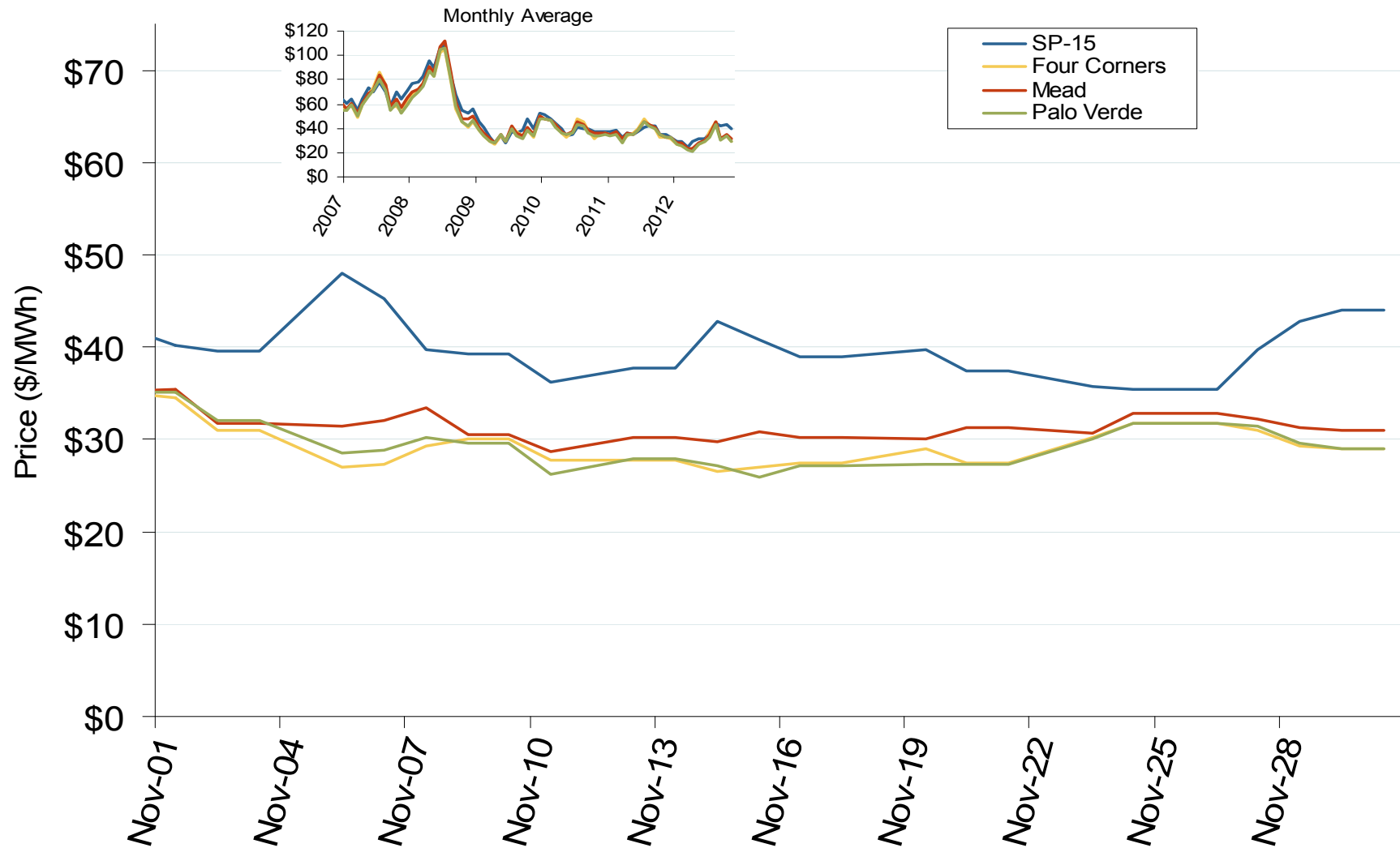


## Western Daily Index Day-Ahead On-Peak Prices



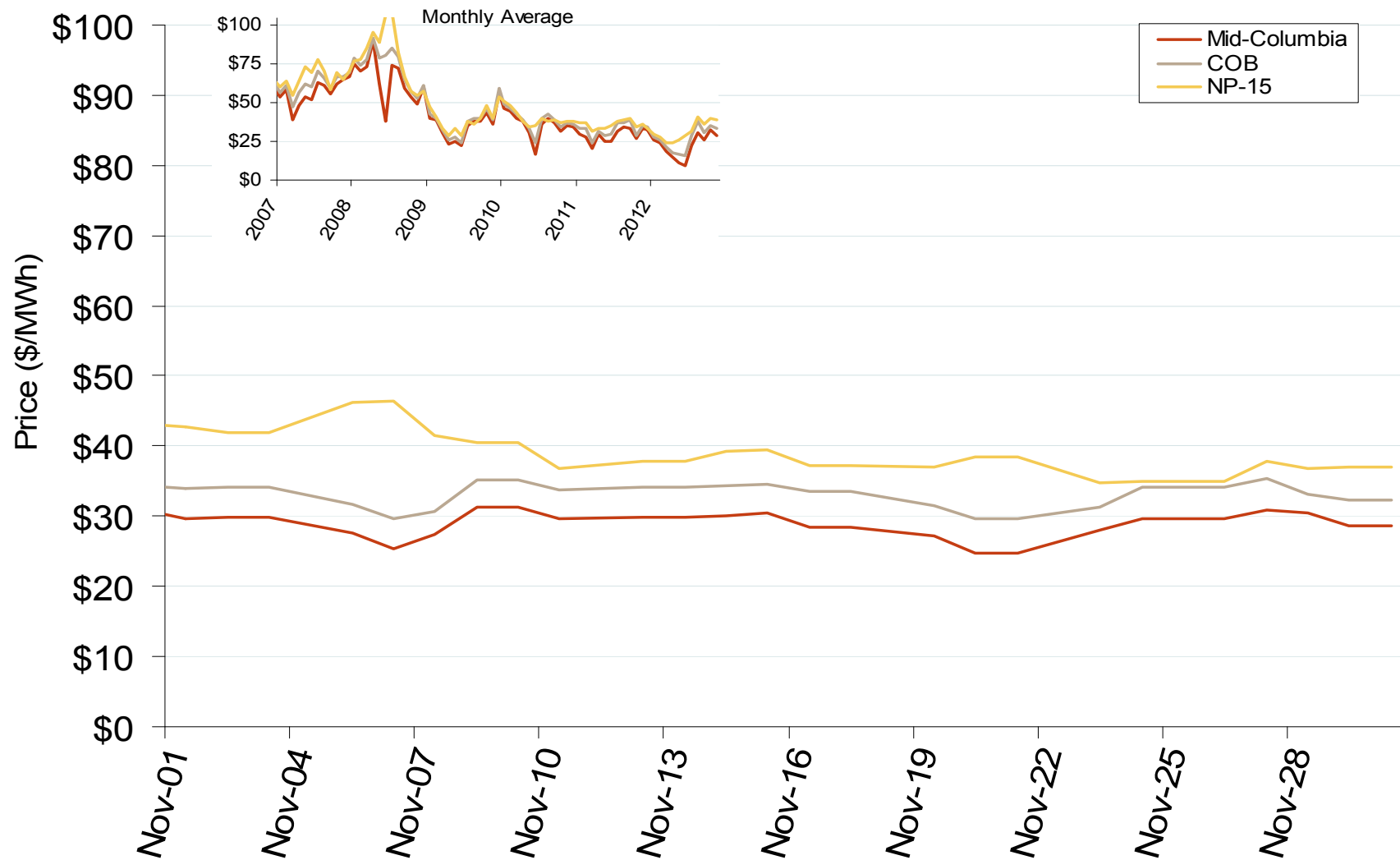
Federal Energy Regulatory Commission • Market Oversight • [www.ferc.gov/oversight](http://www.ferc.gov/oversight)

## Southwestern Daily Index Day-Ahead On-Peak Prices



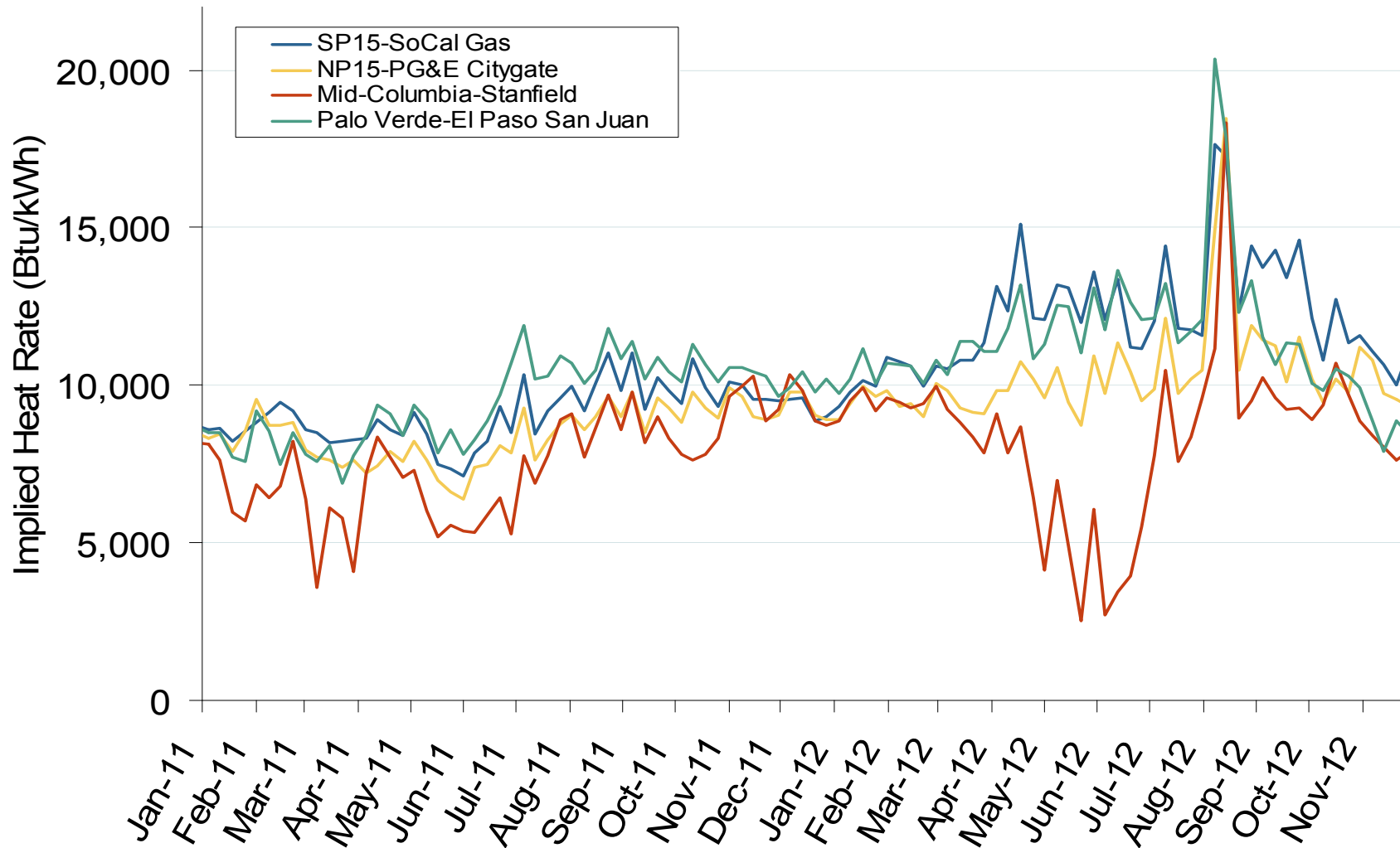
Federal Energy Regulatory Commission • Market Oversight • [www.ferc.gov/oversight](http://www.ferc.gov/oversight)

## Northwestern Daily Index Day-Ahead On-Peak Prices





## Implied Heat Rates at Western Trading Points - Weekly Avgs.



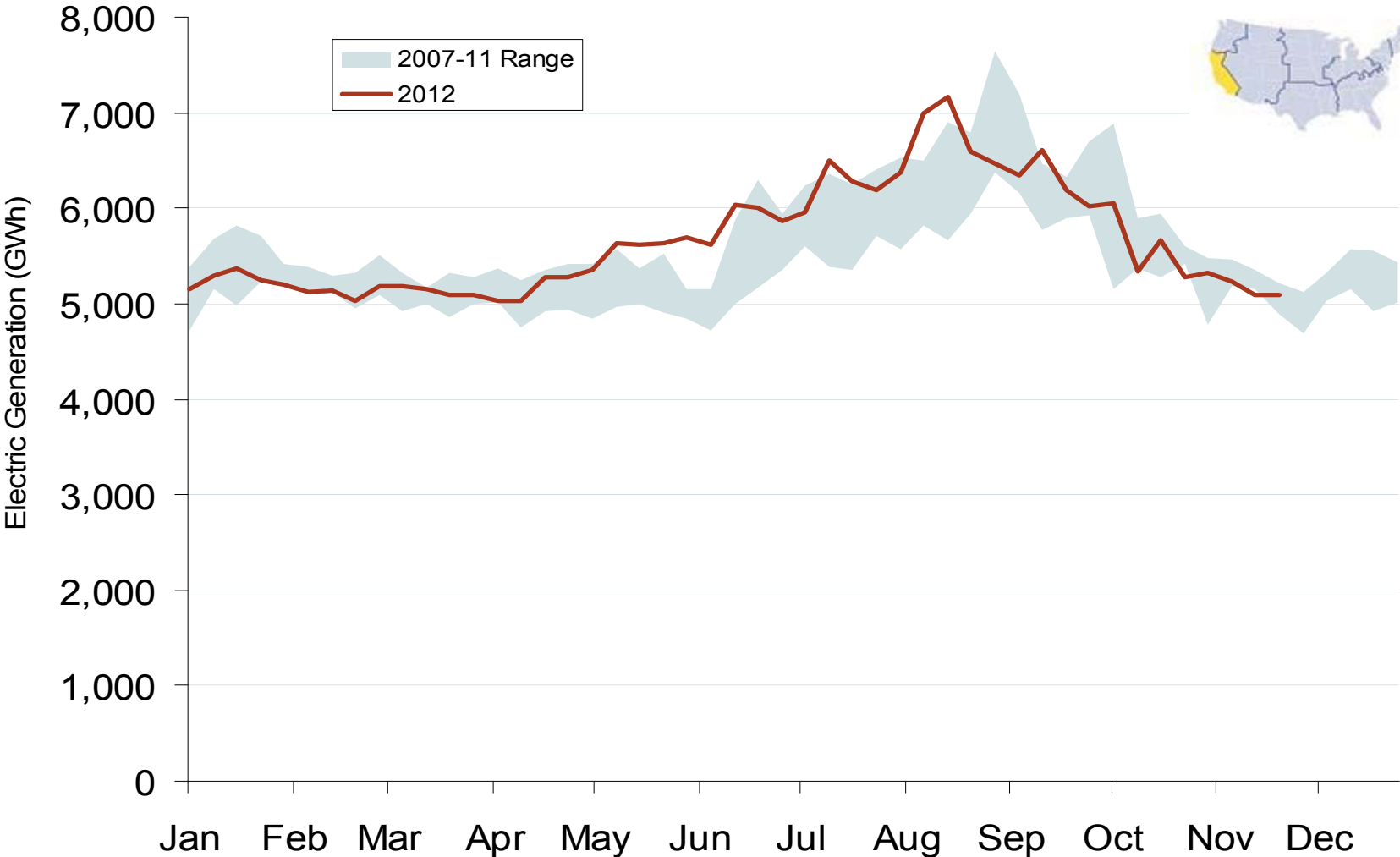
Note: ICE on-peak forward (physical) and swap (financial) volumes are for Mid-Columbia and include monthly, dual monthly, quarterly, and calendar year contracts traded for each month.

Source: Derived from Platts on-peak electric and natural gas price data

December 2012

Updated: December 04, 2012

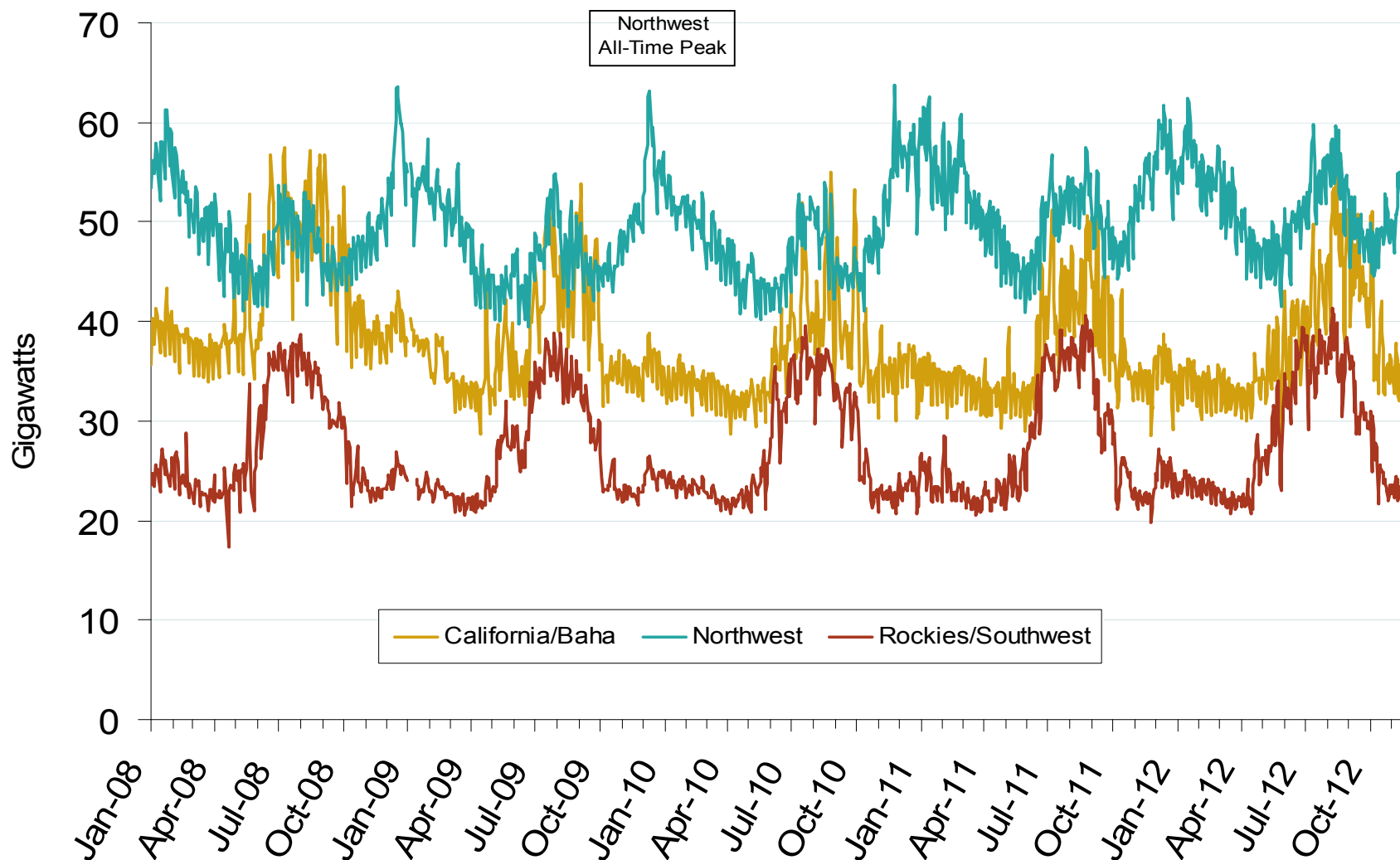
### Weekly Generation Output - California



Source: Derived from EEI data  
December 2012

Updated: December 05, 2012

## California Electric Market: Daily Peak Demand

Federal Energy Regulatory Commission • Market Oversight • [www.ferc.gov/oversight](http://www.ferc.gov/oversight)**Western Daily Actual Peak Demand**

Notes: Data prior to 9/14/2010 does not include weekends and holidays. Some data for 12/31/2008 – 1/9/2009 are not available from WECC

Source: Derived from WECC Daily Report data available at <http://wecc.biz>

Updated: December 05, 2012

December 2012

1192