

PSAT results – Hudson River Atlantic Sturgeon

Prof. Ellen K. Pikitch

School of Marine and Atmospheric Sciences

February 9, 2011



INSTITUTE FOR
OCEAN
CONSERVATION
SCIENCE



Objectives – Atlantic sturgeon

- Identify ocean habitat use:
 - Migratory routes
 - Aggregation areas
 - Potential threats
- Disseminate results to assist Atlantic sturgeon recovery



Erickson, D.L., A. Kahnle, M. J. Millard, E.A. Mora, G. Bryja, A. Higgs, J. Mohler, M. DuFour, G. Kenney, J. Sweka, and E.K. Pikitch. 2011. Use of pop-off satellite tags to identify oceanic migratory patterns for adult Atlantic sturgeon Ascipenser oxyrinchus oxyrinchus Mitchell 1815. J. Applied Ichthyology, p 1-10

- Captured with gill nets (May-July)
- Measurements (length, weight, sex) & genetic samples



Photo courtesy of Albany Times Union

Pop-Up Satellite Archival Tags

- No. of tags (HR)

- 2006: 10

- 2007: 13

- 2008: 10

Record & archive

Date, time,
light, water
temperature,
depth

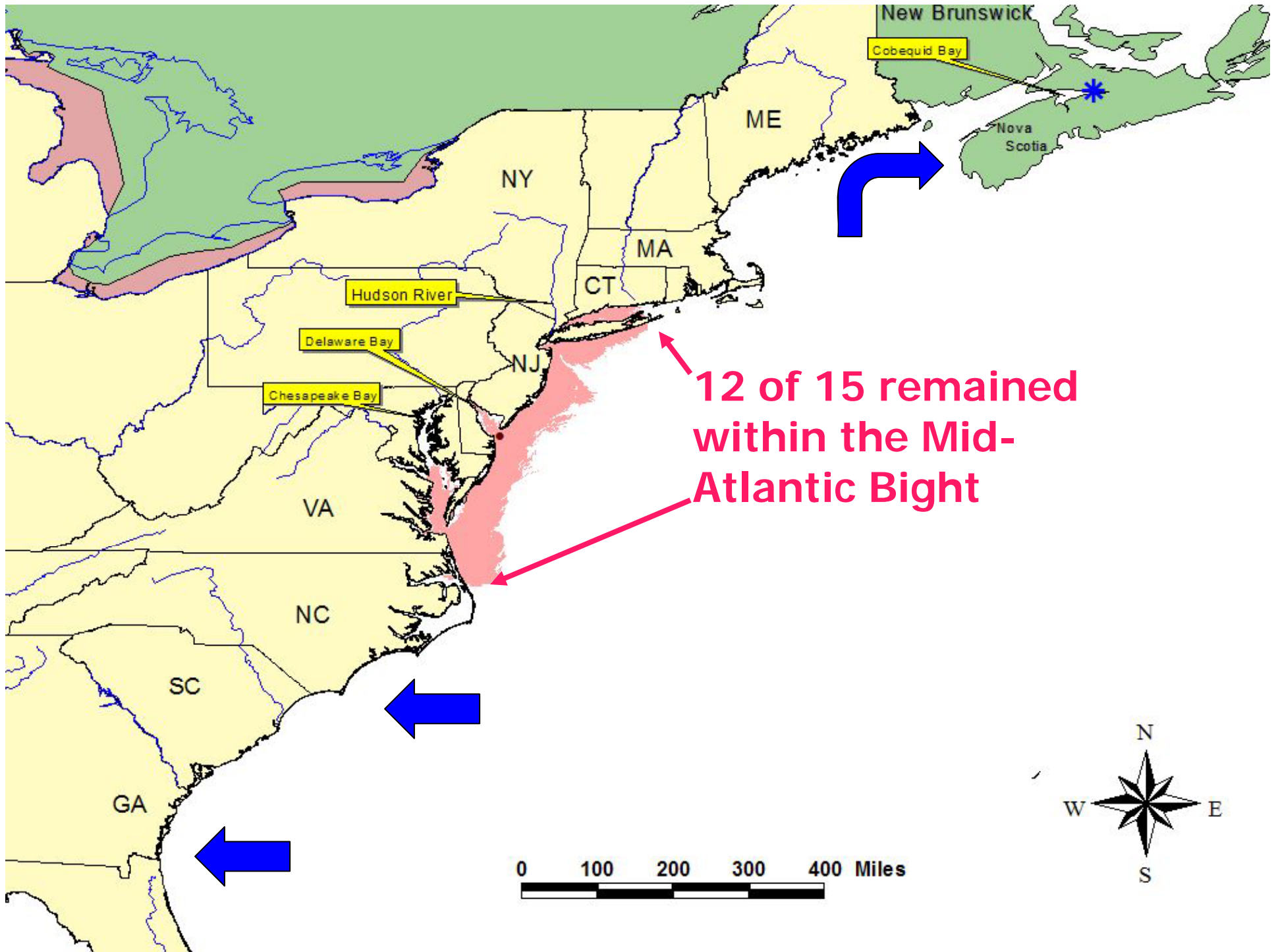
Programmed to
detach (up to 1
year)

Data relayed to
researcher via

satellite



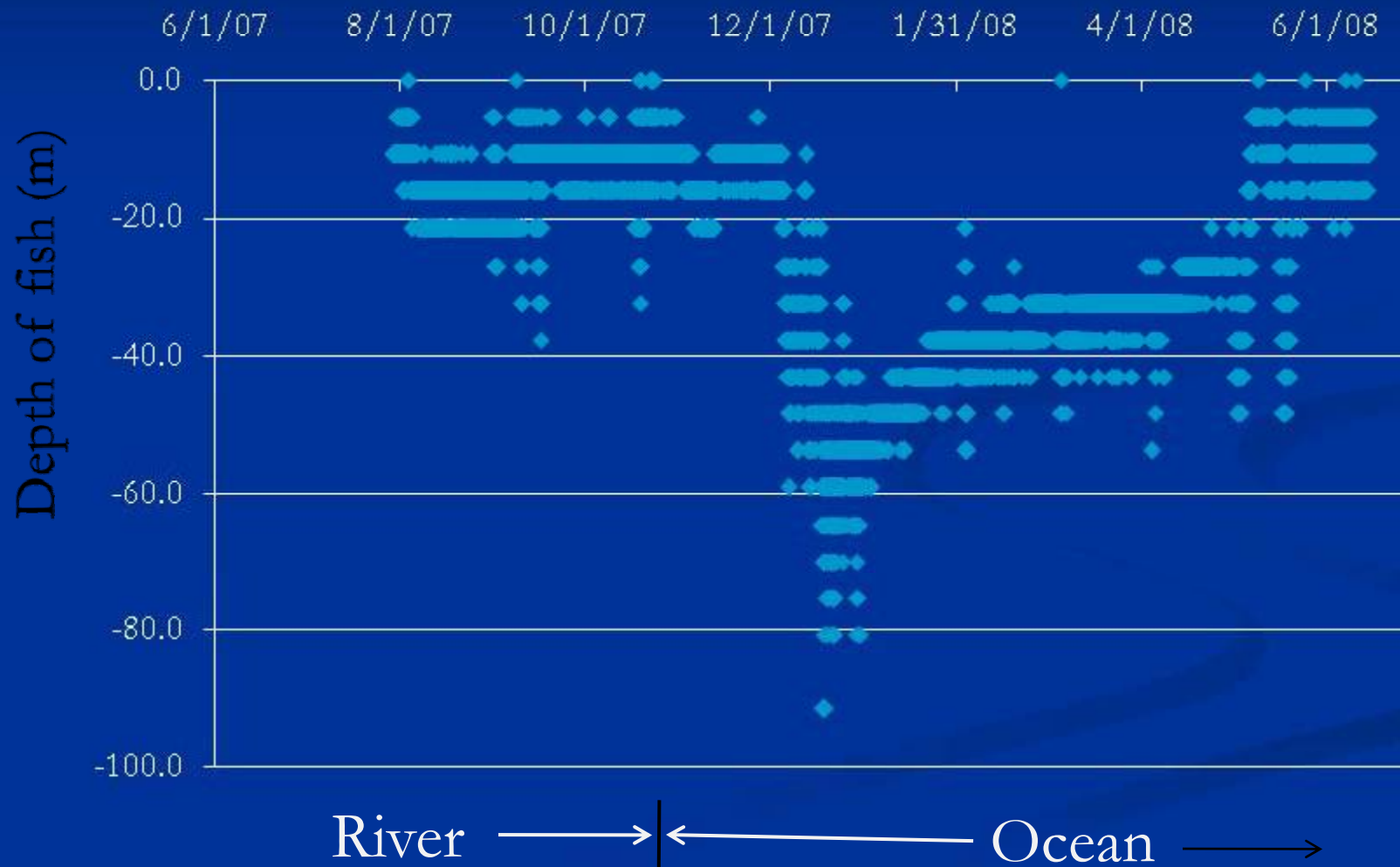
Photo courtesy of Albany Times Union



12 of 15 remained within the Mid-Atlantic Bight

Depths recorded by PAT (hourly) from Hudson River to Cobequid Bay, Nova Scotia

Date



Summary of results

- “Hudson River Fish” mix with all other stocks while in the ocean (GA to NS)
- Vulnerable to threats inside and outside the MAB
- Narrow migratory corridor (5-40 m depth)
- Definitive aggregation areas:
SW Long Island, New Jersey coast, off Delaware Bay and off Chesapeake Bay



Acknowledgements

Pew Charitable Trusts, Packard Foundation
Oak Foundation, USFWS, NY DEC,
Atlantic States Marine Fisheries Commission,
FishAmerica Foundation, The Norcross
Foundation,
Hudson River Foundation, National Fish and
Wildlife Foundation
Many other colleagues and supporters