

**NOAA  
FISHERIES**

# **Atlantic Large Whale Take Reduction Plan**

**Northeast  
Trap/Pot Fisheries  
Requirements and  
Management Areas**

# Contact Us For More Information

## NOAA Fisheries Greater Atlantic Regional Office

Protected Resources Division  
Large Whale Take Reduction Coordinator  
55 Great Republic Drive  
Gloucester, MA 01930  
978-281-9328

## NOAA Fisheries Greater Atlantic Gear Team

Northeast Fisheries Liaison  
John Higgins  
(978) 771-3669  
John.Higgins@noaa.gov

Mid/South Atlantic Fisheries Liaison  
Glenn Salvador  
(757) 414-0128  
Glenn.Salvador@noaa.gov

## Or Visit the Atlantic Large Whale Take Reduction Website

[www.greateratlantic.fisheries.noaa.gov/whaletrp/](http://www.greateratlantic.fisheries.noaa.gov/whaletrp/)

# CONTENTS

**How to Use This Guide- What Management Areas Apply To You 4**

**Plan Overview 5**

**2014-2015 Plan Updates 6**

**Northeast Trap/Pot Management Area Summary 910**

**Trap/Pot Gear Requirements 11**

- **Universal Requirements 11**
- **Gear Marking 13**

**Individual Management Area Requirements 15**

- **Northern Inshore State Trap/Pot Waters 16**
- **Massachusetts Restricted Area 18**
- **Stellwagen Bank/Jeffreys Ledge Restricted Area 20**
- **Great South Channel Restricted Trap/Pot Area 22**
- **Northern Nearshore Trap/Pot Waters 24**
- **Southern Nearshore Trap/Pot Waters 26**
- **Offshore Trap/Pot Waters 28**
- **Jeffreys Ledge Gear Marking Area 30**
- **Jordan Basin Gear Marking Area 31**

**Minimum Trap per Trawl and Plan Exemptions 32**



**NOAA  
FISHERIES**

# How To Use This Guide

This guide provides overviews of the requirements for each ALWTRP management area located from Maine through Connecticut affecting trap/pot fisheries. Several management areas may overlap state waters. Please see the outline below of management areas that may be in effect in your area. It is your responsibility to make sure you are compliant with requirements applicable to your fishery. If you have questions about requirements for your area, please contact us.

## What Management Areas Apply to You?

STATE WATERS	MANAGEMENT AREAS	PAGE OF THIS GUIDE
<b>MAINE</b>	Northern Inshore Trap/Pot Waters	16
	Stellwagen Bank/Jeffreys Ledge Restricted Area	20
	Northern Nearshore Trap/Pot Waters	24
	ME Exempted Areas (includes additional gear marking)	32
<b>NEW HAMPSHIRE</b>	Northern Inshore Trap/Pot Waters	16
	Stellwagen Bank/Jeffreys Ledge Restricted Area	20
	Northern Nearshore Trap/Pot Waters	24
	NH Exempted Areas	35
<b>MASSACHUSETTS</b>	Northern Inshore Trap/Pot Waters	16
	Massachusetts Restricted Area	18
	Stellwagen Bank/Jeffreys Ledge Restricted Area	20
	Great South Channel Restricted Area	22
	Northern Nearshore Trap/Pot Waters	24
	MA Exempted Areas (includes additional gear marking)	37
<b>RHODE ISLAND</b>	Northern Inshore Trap/Pot Waters	16
	Northern Nearshore Trap/Pot Waters	24
	Southern Nearshore Trap/Pot Waters	26
	RI Exempted Areas (includes additional gear marking)	39
<b>CONNECTICUT</b>	Northern Inshore Trap/Pot Waters	16
	Northern Nearshore Trap/Pot Waters	24
	Southern Nearshore Trap/Pot Waters	26
<b>FEDERAL WATERS</b>	Offshore trap/pot waters	28
	Stellwagen Bank/Jeffreys Ledge Restricted Area	20
	Great South Channel Restricted Area	22
	Northern Nearshore Trap/Pot Waters	24
	Southern Nearshore Trap/Pot Waters	26
	Jeffreys Ledge Gear Marking Area	30
	Jordan Basin Gear Marking Area	31

# Atlantic Large Whale Take Reduction Plan

The Atlantic Large whale Take Reduction Plan (Plan) is a program to reduce the risk of serious injury and death of large whales caused by accidental entanglement in U.S. commercial trap/pot and gillnet fishing gear. The Plan is required by the Marine Mammal Protection Act and has been developed by NOAA's National Marine Fisheries Service (NMFS).

The Plan focuses on reducing entanglements of endangered right, humpback, and fin whales. Non-endangered minke whales also benefit from the Plan. Under the Endangered Species Act, Federal agencies are required to ensure that permitted activities (such as fishing) do not cause harm to, or jeopardize, the continued existence of any endangered species. Since the Plan measures are intended to reduce entanglements of right, humpback, and fin whales in fishing gear, these measures also help to avoid the likelihood that Federally permitted fishing activities will jeopardize the continued existence of these whales.

The Atlantic Large Whale Take Reduction Team; which consists of fishing industry representatives, environmentalists, state and federal officials, and other interested parties; helped develop the Plan. Information about the process and the team is available on the Plan website ([www.greateratlantic.fisheries.noaa.gov/whaletrp/](http://www.greateratlantic.fisheries.noaa.gov/whaletrp/)).

The Plan evolves and changes as NMFS and the team learn more about whale entanglements and how fishing practices might be modified to reduce the risk of entanglement. The first Plan went into effect in 1997. The regulations contained in that rule have been updated several times, with the most recent updates occurring in the summer of 2014 (see pages 6-8 for a summary of the most recent Northeast trap/pot updates).

The current Plan includes restrictions on where and how gear can be set, including closures and gear modifications such as use of sinking groundline and weak links, trap minimums, and gear markings. Other components of the Plan include research on whale populations, whale behavior, and fishing gear interactions; outreach to inform and collaborate with fishermen; and a disentanglement program.

This document is a summary of the Plan's commercial **Northeast trap/pot fishing regulations**.

*Note: This guide includes Federal requirements only for state and Federal waters; contact your state fishery office for any additional requirements within state waters. Should any regulations overlap with the Plan regulations, the more restrictive regulations apply.*

## The Atlantic Large Whale Take Reduction Plan applies to the following fisheries:

### Gillnets

- Northeast sink gillnet;
- Northeast anchored float gillnet;
- Northeast drift gillnet;
- Mid-Atlantic gillnet;
- Southeastern US Atlantic shark gillnet; and
- Southeast Atlantic gillnet.

### Trap/Pots

- Northeast/Mid-Atlantic American lobster trap/pot;
- Atlantic blue crab trap/pot;
- Atlantic mixed species trap/pot which includes, but is not limited to: crab (red, Jonah, and rock), hagfish, finfish (black sea bass, scup, tautog, cod, haddock, pollock, redfish (ocean perch), and white hake), conch/whelk, and shrimp.

# 2014-2015 Northeast Trap/Pot Plan Updates

In 2014 and 2015, the Plan was modified to include the following new requirements and definitions. Modifications for Mid-Atlantic and Southeast fisheries can be found in the corresponding guides.

## Gear Marking Changes

### Gear Marking Size & Color

Gear marking colors remain the same and are defined under each individual management area, however the frequency and size of the markings have changed. Now all buoy lines must be marked with three 12 inch (30.48 cm), colored marks: one at the top of the buoy line, one midway along the buoy line, and one at the bottom of the buoy line. If the mark consists of two colors then each color mark may be 6-inch for a total mark of 12-inches.

Gear marking schemes were also modified for several new areas including:

AREA	OLD GEAR MARKING COLOR	NEW GEAR MARKING COLOR(S)
Min. trap per trawl exempt RI state waters (singles)	RED	RED & BLUE
Min. trap per trawl exempt MA state waters in LMA 1 (singles)	RED	RED & WHITE
Min. trap per trawl exempt MA state waters in LMA2 (singles)	RED	RED & BLACK
Min. trap per trawl exempt MA state waters in Outer Cape (singles)	RED	RED & YELLOW
Min. trap per trawl exempt Isle of Shoals, Maine (singles)	RED	RED & ORANGE
Jordan Basin (all trap/pot)	RED (OR BLACK)	RED (OR BLACK) & PURPLE
Jordan Basin (all gillnet)	GREEN	GREEN & YELLOW
Jeffreys Ledge (all trap/pot)	RED	RED & GREEN
Jeffreys Ledge (all gillnet)	GREEN	GREEN & BLACK

### NEW Gear Marking Areas (Trap/Pot & Gillnet)

Two new gear marking areas have been added for trap/pot and gillnet fisheries in the Northeast: Jeffreys Ledge and Jordan Basin. For more information, see pages 30 & 31 in this guide.

# 2014-2015 Northeast Trap/Pot Plan Updates

## New Trap/Pot Closure Area

The “Cape Cod Bay Restricted Area” has been expanded into the new “Massachusetts Restricted Area”. This management area includes a new closure for trap/pot gear from February 1-April 30th. See “Massachusetts Restricted Area” on page 18 for more details.

## Minimum Trap Per Trawl Requirements & Exemptions

### Minimum Number of Traps Per Trawl Requirements

Many of the management areas now require a minimum number of traps per trawl based on area fished and distance from shore. See each individual management area for locations and details on these requirements. Additionally, trawls including 5 traps or fewer, must only have 1 buoy line (with the exception of Massachusetts state waters- page 37).

### Minimum Number of Traps Per Trawl Requirement Exemptions

The following state waters are exempt from the Plan’s minimum trap per trawl requirements:

- New Hampshire state waters
- Rhode Island state waters;
- Portions of Massachusetts state waters;
- Waters within 1/4 mile the following islands in Maine:
  - Monhegan Island, Maine
  - Matinicus Island, Maine
  - Ragged Island, Maine
- Matinicus Island group, Maine (Metinic, Small Green, Large Green, Seal, and Wooden Ball); and
- Isle of Shoals group, Maine (Duck, Appledore, Cedar, and Smuttynose)

# 2014-2015 Northeast Trap/Pot Plan Updates

## New Definitions

*Maine Six Mile Line waters and Maine Pocket Waters* were defined for the minimum number of trap per trawl requirements.

### Maine Six Mile Line Waters

The six-mile line is a line connecting the following points (Machias Seal to Isle of Shoals)

44°31.98' N. lat., 67°9.72' W. long (Machias Seal)

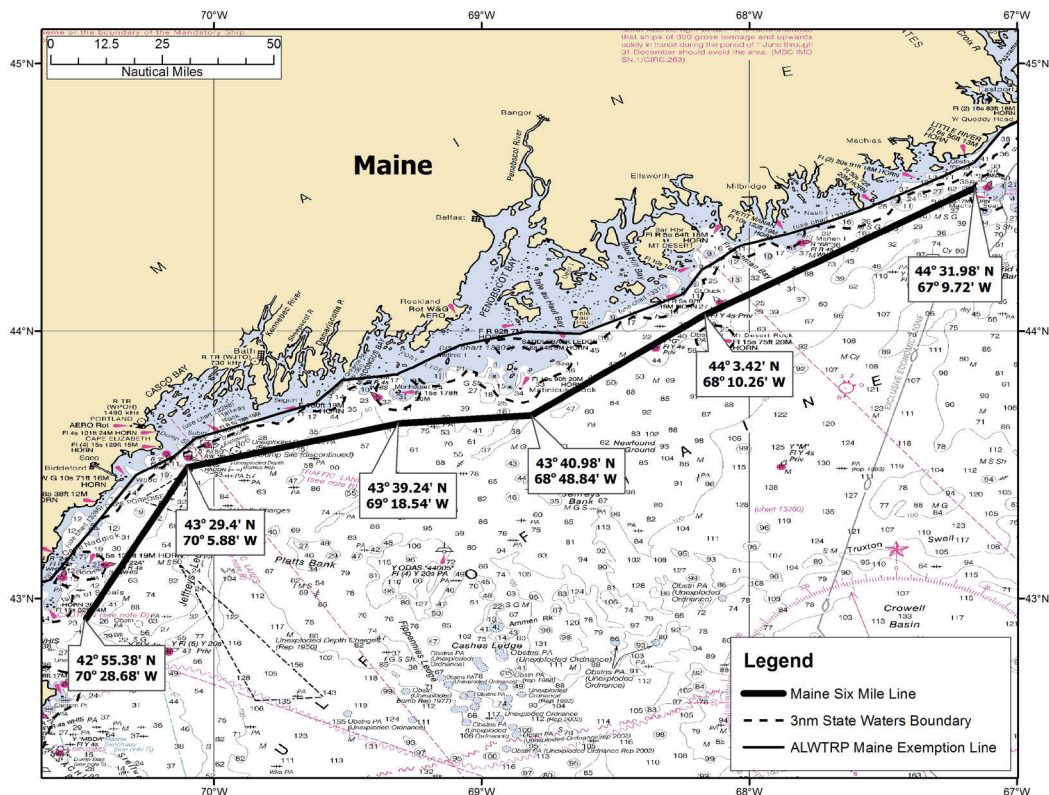
44°3.42' N. lat., 68°10.26' W. long (Mount Desert Island)

43°40.98' N. lat., 68°48.84' W. long (Matinicus)

43°39.24' N. lat., 69°18.54' W. long (Monhegan)

43°29.4' N. lat., 70°5.88' W. long (Casco Bay)

42°55.38' N. lat., 70°28.68' W. long (Isle of Shoals)





# 2014-2015 Northeast Trap/Pot Plan Updates

## New Definitions (Continued)

### Maine Pocket Waters

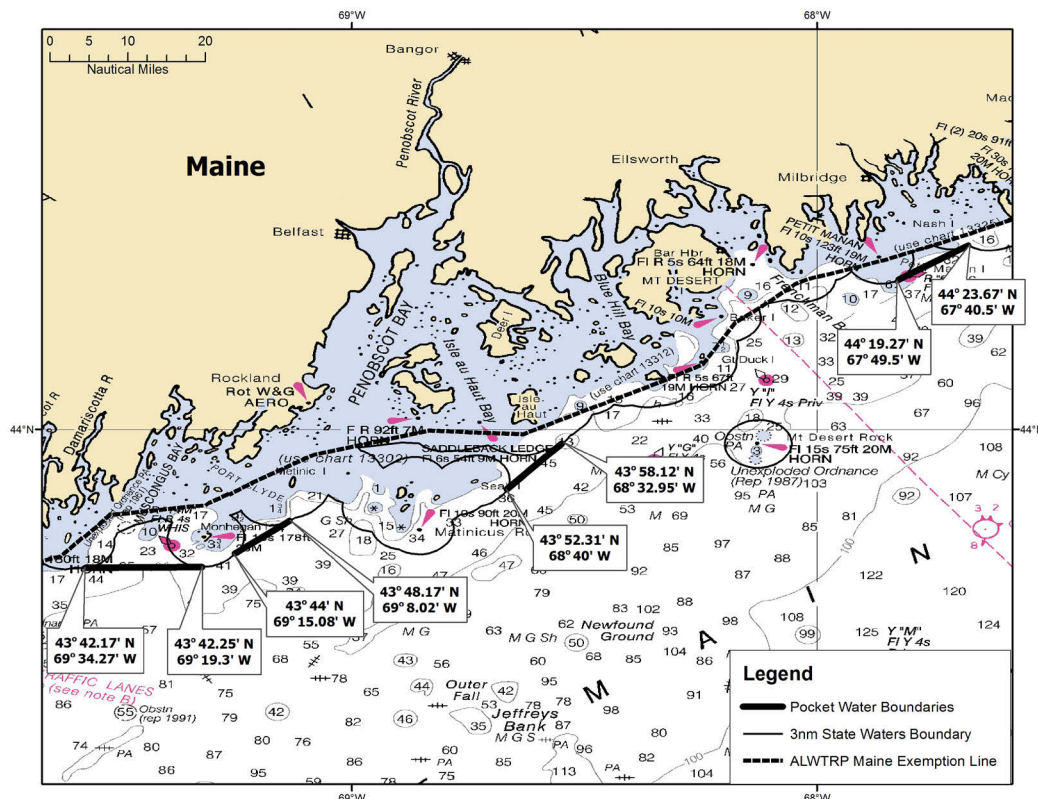
The pocket waters are defined as follows:

West of Monhegan Island in the area north of the line 43°42.17' N. lat., 69°34.27' W. long and 43°42.25' N. lat., 69°19.3' W. long

East of Monhegan Island in the area located north of the line 43°44' N. lat., 69°15.08' W. long and 43°48.17' N. lat., 69°8.02' W. long

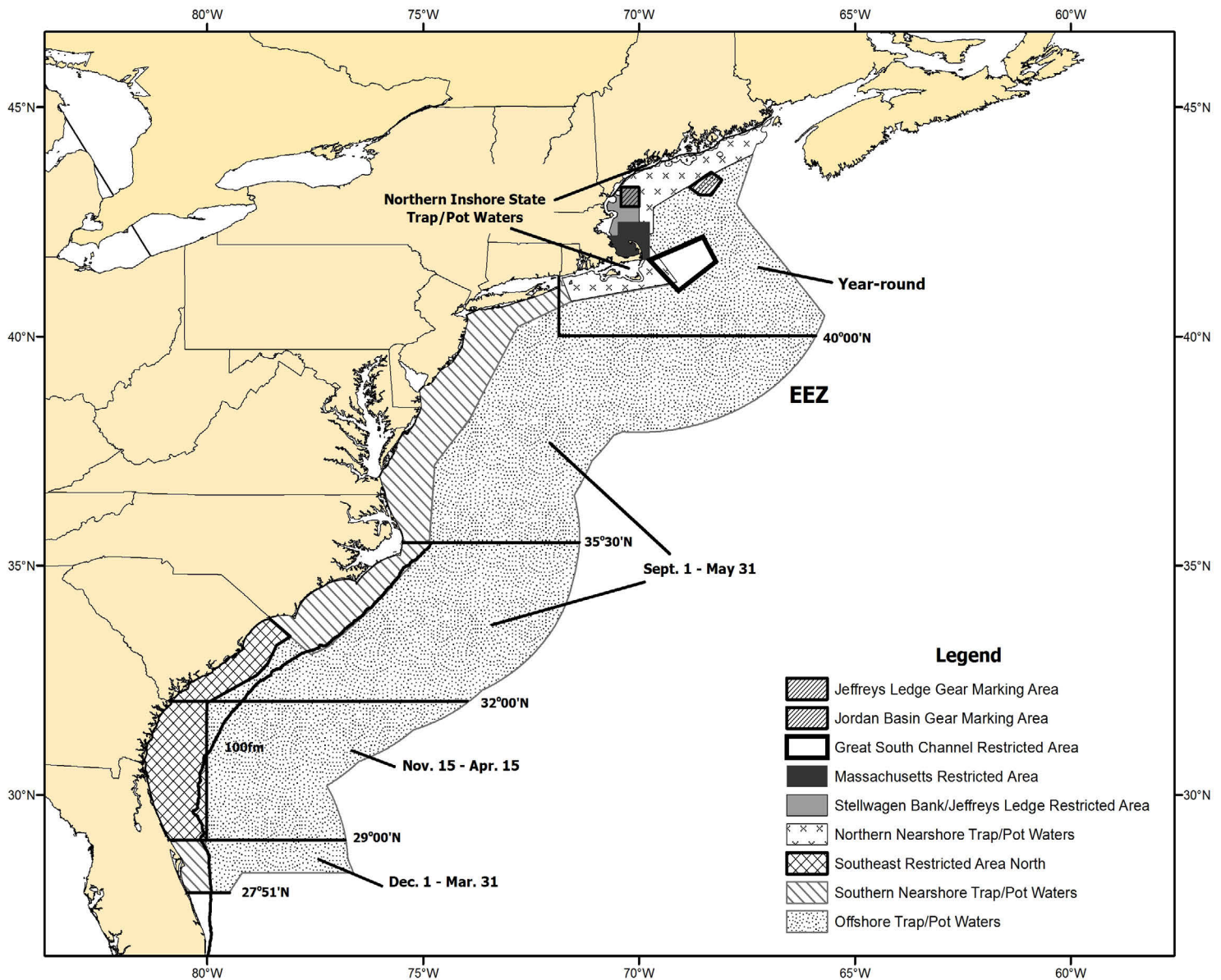
South of Vinalhaven Island in the area located west of the line 43°52.31' N. lat., 68°40' W. long and 43°58.12' N. lat., 68°32.95' W. long

South of Bois Bubert Island in the area located northwest of the line 44°19.27' N. lat., 67°49.5' W. long and 44°23.67' N. lat., 67°40.5' W. long



# Trap/Pot Management Area Summary

Trap/pot gear requirements vary by geographic area. The Plan currently recognizes ten trap/pot areas along the entire Atlantic coast: Massachusetts Restricted Area, Great South Channel Restricted Area, Stellwagen Bank/Jeffreys Ledge Restricted Area, Northern Inshore State Trap/Pot Waters, Northern Nearshore Trap/Pot Waters, Southern Nearshore Trap/Pot Waters, Offshore Trap/Pot Waters, Southeast Restricted Area North, Jordan Basin Gear Marking Area, and Jeffreys Ledge Gear Marking Area.



*Many of these areas overlap the Lobster Management Areas (LMA) described in the Federal American lobster regulations found at 50 CFR Part 697 Subpart B.*

# Northeast Trap/Pot Requirements

## Trap/Pot Universal Requirements

- No buoy line floating at the surface.
- No wet storage of gear (all gear must be hauled out of the water at least once every 30 days).
- Fishermen are encouraged, but not required, to maintain knot-free buoy lines.
- All groundlines must be made of sinking line.
- Trawls with less than or equal to 5 traps may only possess 1 buoy line, except in MA state waters.

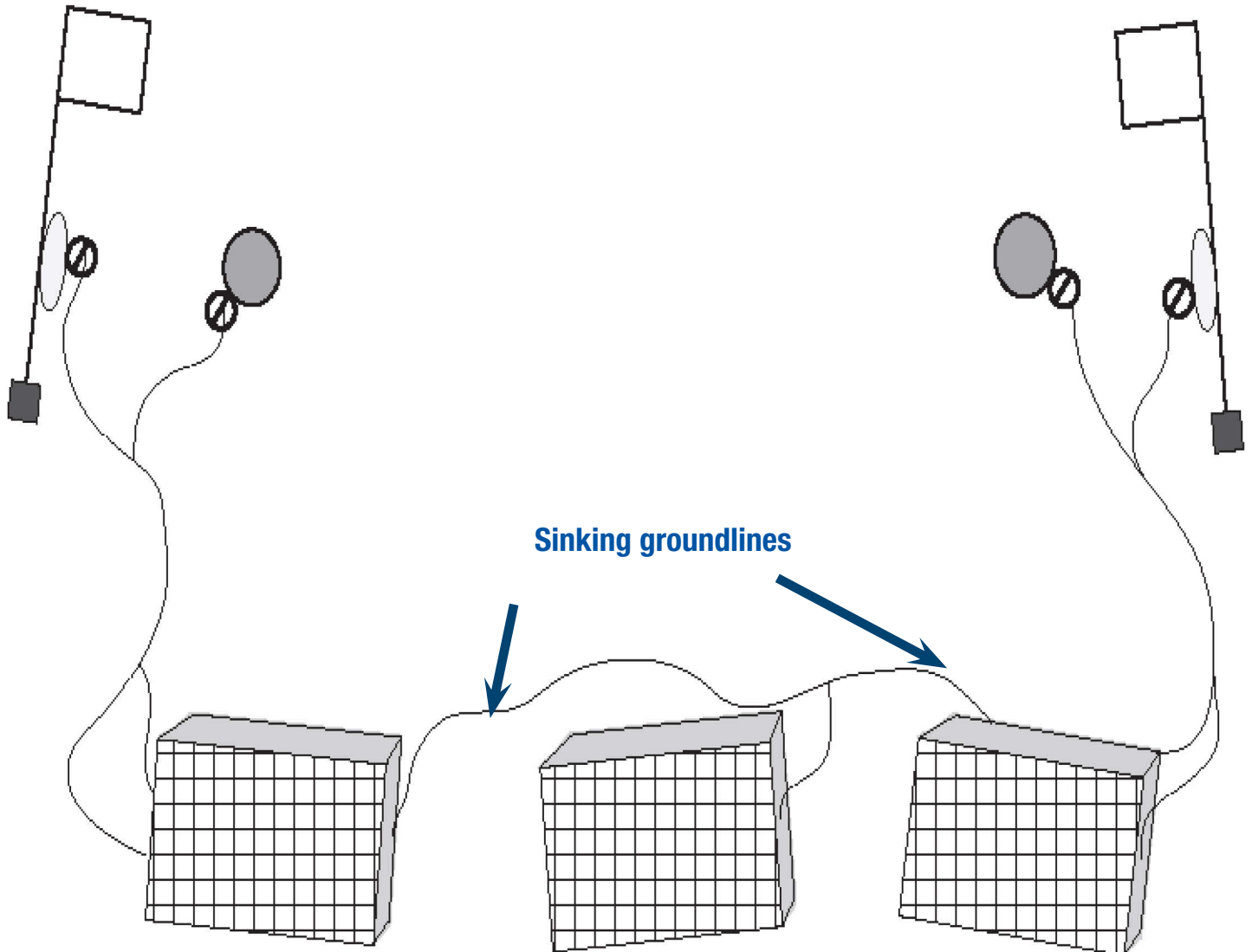
## Trap/Pot Weak Link Requirements

- All buoys, flotation devices and/or weights must be attached to the buoy line with a weak link having a certain breaking strength as defined for each management area on the following pages.
- Weak links must be chosen from the list of NMFS approved gear, which includes: off the shelf weak links, rope of appropriate breaking strength, hog rings, and other materials or devices approved in writing. Weak links must be designed in such a way that the bitter end of the buoy line is clean and free of any knots when the weak link breaks.
- See Supplement B- Weak Links and Anchoring Techniques for more details on achieving appropriate weak links strengths.

## Trap/Pot Gear Marking Requirements

- Trap/pot surface buoys to be marked to identify the vessel or fishery with one of the following: the owner's motorboat registration number and/or U.S. vessel documentation number; the federal commercial fishing permit number; or whatever positive identification marking is required by the vessel's home-port state.
- When marking is not already required by state or federal regulations, the letters and numbers to mark gear must be at least 1 inch (2.5 cm) in height, block letters or Arabic numbers, in a color that contrasts with the color of the buoy.
- Buoy lines are to be marked with **three 12 inch (30.48 cm), colored marks: one at the top of the buoy line, one midway along the buoy line, and one at the bottom of the buoy line.**
- If the mark consists of two colors, EACH COLOR mark may be 6-inches for a TOTAL MARK of 12-inches.
- Color requirements are defined for each individual management area as described in each management area description that follows.
- See page 13 and Supplement C- Gear Marking for more information on gear marking.

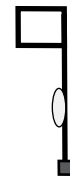
# Trap/Pot Diagram



Buoy line weak link- please refer to individual management areas for specific breaking strength requirements



Buoy



High flyer or buoy

**This graphic depicts a general trap/pot gear configuration. Please see individual Management Areas for information regarding specific weak link, gear marking and/or any other requirements.**

# Trap/Pot Gear Marking- All Regions



## Surface Buoy Marking

### SURFACE BUOYS ARE TO BE MARKED WITH:

Markings to help identify the associated vessel or fishery by including one of the following:

- the owner's boat registration number and/or US vessel documentation number;
- Federal commercial fishing permit number; or
- Whatever positive identification is required by the vessel's home-port state.

When marking is not already required by state or federal regulations, the letters and numbers must meet the following requirements:

- At least 1-inch (2.5cm) in height;
- Block letters or Arabic numbers; and
- In a color that contrasts with the color of the buoy.

## Buoy Line Marking:

### BUOY LINES ARE TO BE MARKED WITH:

**THREE** 12 inch (30.48 cm) colored marks:

- one at the top of the buoy line,
- one midway along the buoy line, and
- one at the bottom of the buoy line.

If the mark consists of two colors, **EACH COLOR** mark may be 6-inches for a TOTAL MARK of 12-inches.

Each color code must be permanently affixed on or along the line and each color code must be clearly visible when the gear is hauled or removed from the water.



**Additional information on gear marking techniques can be found in Supplement C- Gear Marking.**

# Trap/Pot Gear Marking- All Regions (Continued)

GEAR MARKING COLOR	APPLICABLE TRAP/POT MANAGEMENT AREA
<b>RED</b>	<ul style="list-style-type: none"> <li>• Massachusetts Restricted Area</li> <li>• Northern Nearshore Trap/Pot Waters</li> <li>• Northern Inshore State Trap/Pot Waters</li> <li>• Stellwagen Bank Jeffreys Ledge Restricted Area</li> <li>• Great South Channel Restricted Area overlapping Lobster Management Area (LMA) 2 and/or the Outer Cape (OC) LMA.</li> </ul>
<b>ORANGE</b>	<ul style="list-style-type: none"> <li>• Southern Nearshore Trap/Pot Waters.</li> </ul>
<b>BLACK</b>	<ul style="list-style-type: none"> <li>• Offshore Trap/Pot Waters; Great South Channel Restricted Area overlapping with the LMA 2/3 Overlap and/or LMA 3</li> </ul>
<b>BLUE &amp; ORANGE</b>	<ul style="list-style-type: none"> <li>• Southeast Restricted Area North- state waters</li> </ul>
<b>GREEN &amp; ORANGE</b>	<ul style="list-style-type: none"> <li>• Southeast Restricted Area North- Federal waters</li> </ul>
<b>RED &amp; BLUE</b>	<ul style="list-style-type: none"> <li>• Min. trap per trawl exempt RI state waters (singles)</li> </ul>
<b>RED &amp; WHITE</b>	<ul style="list-style-type: none"> <li>• Min. trap per trawl exempt MA state waters in LMA 1 (singles)</li> </ul>
<b>RED &amp; BLACK</b>	<ul style="list-style-type: none"> <li>• Min. trap per trawl exempt MA state waters in LMA 2 (singles)</li> </ul>
<b>RED &amp; YELLOW</b>	<ul style="list-style-type: none"> <li>• Min. trap per trawl exempt MA waters in Outer Cape (singles)</li> </ul>
<b>RED &amp; PURPLE</b>	<ul style="list-style-type: none"> <li>• Jordan Basin (Trap/Pot) overlapping LMA 1</li> </ul>
<b>BLACK &amp; PURPLE</b>	<ul style="list-style-type: none"> <li>• Jordan Basin (Trap/Pot) overlapping Offshore Trap/Pot Waters</li> </ul>
<b>RED &amp; ORANGE</b>	<ul style="list-style-type: none"> <li>• Isle of Shoals group, Maine</li> </ul>
<b>RED &amp; GREEN</b>	<ul style="list-style-type: none"> <li>• Jeffreys Ledge (Trap/Pot)</li> </ul>

# Northeast Trap/Pot Management Areas

- Northern Inshore State Trap/Pot Waters 16
- Massachusetts Restricted Area (formerly Cape Cod Bay Restricted Area) 18
- Stellwagen Bank/Jeffreys Ledge Restricted Area 20
- Great South Channel Restricted Trap/Pot Area 22
- Northern Nearshore Trap/Pot Waters 24
- Southern Nearshore Trap/Pot Waters 26
- Offshore Trap/Pot Waters 28
- Jeffreys Ledge (Trap/Pot) Gear Marking Area 30
- Jordan Basin (Trap/pot) Gear Marking Area 31

# Northeast Trap/Pot Management Areas

## Northern Inshore State Trap/Pot Waters

### MANAGEMENT AREA DESCRIPTION

Includes the state waters of Rhode Island, Massachusetts, New Hampshire, and Maine, with the exception of the Massachusetts Restricted Area and the exempted waters (see Supplement A- Exempted Areas).

DATES	RESTRICTIONS/REQUIREMENTS SUMMARY
Year-round	<ul style="list-style-type: none"> <li>• Universal requirements</li> <li>• Gear marking- <b>RED</b> or the following colors for <u>minimum trap per trawl exemption areas</u> <ul style="list-style-type: none"> <li>• <b>Single traps in exempted MA State waters in LMA1-RED &amp; WHITE</b></li> <li>• <b>Single traps in exempted MA state waters in LMA 2- RED &amp; BLACK</b></li> <li>• <b>Single traps in exempted MA state waters in Outer Cape- RED &amp; YELLOW</b></li> </ul> </li> <li>• Weak links ≤ 600 lbs breaking strength</li> <li>• Sinking groundline</li> <li>• Minimum number of traps per trawl restrictions (see below)</li> </ul>

### TRAP RESTRICTIONS

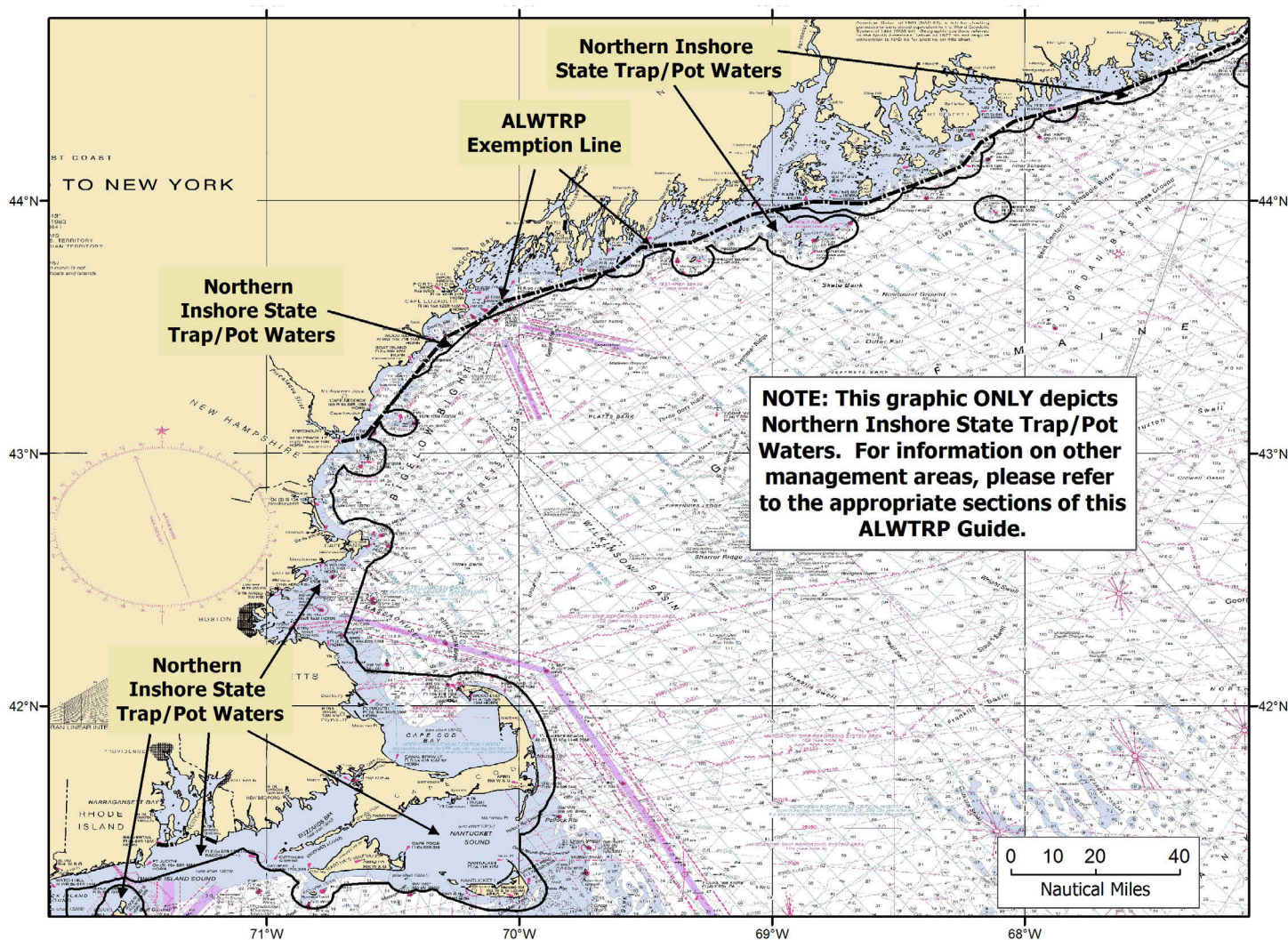
Area	Minimum Number of Traps Per Trawl
ME State and Pocket Waters*	2
MA State Waters	2 or no minimum- see page 37 for exempted MA state waters
NH State Waters	no minimum
LMA1/Outer Cape Overlap (0-3 miles)	no minimum
Outer Cape (0-3 miles)	no minimum
Rhode Island State Waters	no minimum

\* *The Pocket Waters as defined on page 9.*



# Northeast Trap/Pot Management Areas

## Northern Inshore State Trap/Pot Waters



*This management area overlaps the following additional management areas. Please see the pages below for more information:*  
*Massachusetts Restricted Area page 18*  
*Stellwagen Bank/Jeffreys Ledge Restricted Area page 20*

# Northeast Trap/Pot Management Areas Massachusetts Restricted Area

## LOCATION DESCRIPTION

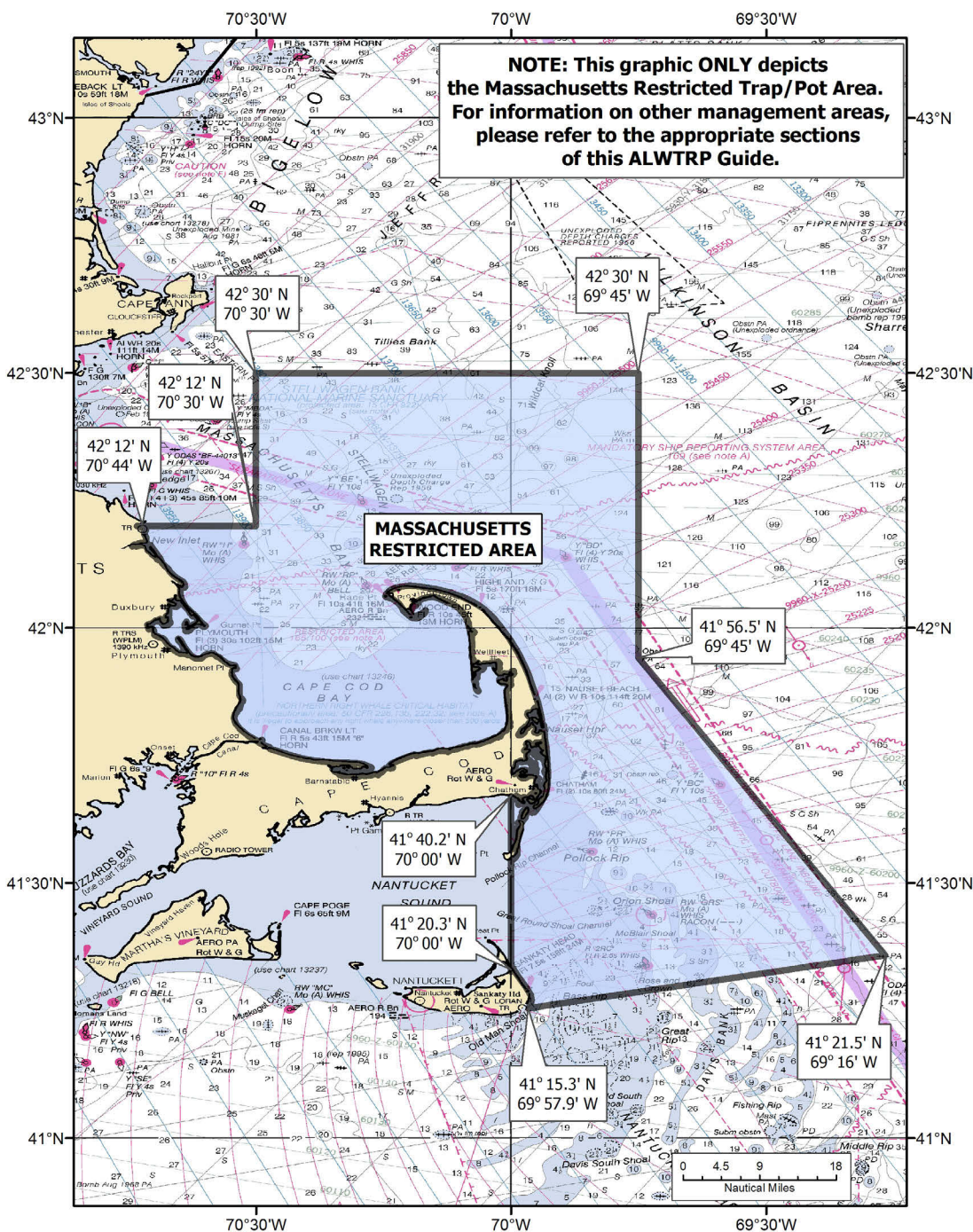
An expanded version of the former Cape Cod Bay Restricted Area, the Massachusetts Restricted Area is bounded by the following point surrounding the shoreline of Cape Cod, Massachusetts: 42°12'/70°44', 42°12'/70°30', 42°30'/70°30', 42°30'/69°45', 41°56.5'/69°45', 41°21.5'/69°16', 41°15.3'/69°57.9', 41°20.3'/70°00', 41°40.2'/70°00'.

DATES	RESTRICTIONS/REQUIREMENTS SUMMARY
February 1 to April 30	<ul style="list-style-type: none"> <li>• CLOSED to ALL trap/pot fishing</li> </ul>
May 1 to January 31	<ul style="list-style-type: none"> <li>• Universal requirements</li> <li>• Gear marking- <b>RED</b> or the following colors for <u>minimum trap per trawl exemption areas</u> <ul style="list-style-type: none"> <li>• <b>Single traps in exempted MA State waters in LMA1-RED &amp; WHITE</b></li> <li>• <b>Single traps in exempted MA state waters in LMA 2- RED &amp; BLACK</b></li> <li>• <b>Single traps in exempted MA state waters in Outer Cape- RED &amp; YELLOW</b></li> </ul> </li> <li>• Weak links ≤ 600 lbs breaking strength</li> <li>• Sinking groundline</li> <li>• Minimum number of traps per trawl restrictions (see below)</li> </ul>

## TRAP RESTRICTIONS

Area	Minimum Number of Traps Per Trawl
MA State Waters	2 or no minimum- see page 37 for exempted MA state waters
LMA 1 (3-12 miles)	10
LMA1/Outer Cape Overlap (0-3 miles)	no minimum
Outer Cape (0-3 miles)	no minimum
Outer Cape (3-12 miles)	10

# Northeast Trap/Pot Management Areas Massachusetts Restricted Area



*This management area overlaps the following additional management areas. Please see the pages below for more information:*

- Northern Inshore Trap/Pot waters page 16*
- Stellwagen Bank/Jeffreys Ledge Restricted Area page 20*
- Great South Channel Restricted Area page 22*
- Northern Nearshore Trap/Pot Waters page 24*

# Northeast Trap/Pot Management Areas

## Stellwagen Bank/Jeffreys Ledge Restricted Area

### LOCATION DESCRIPTION

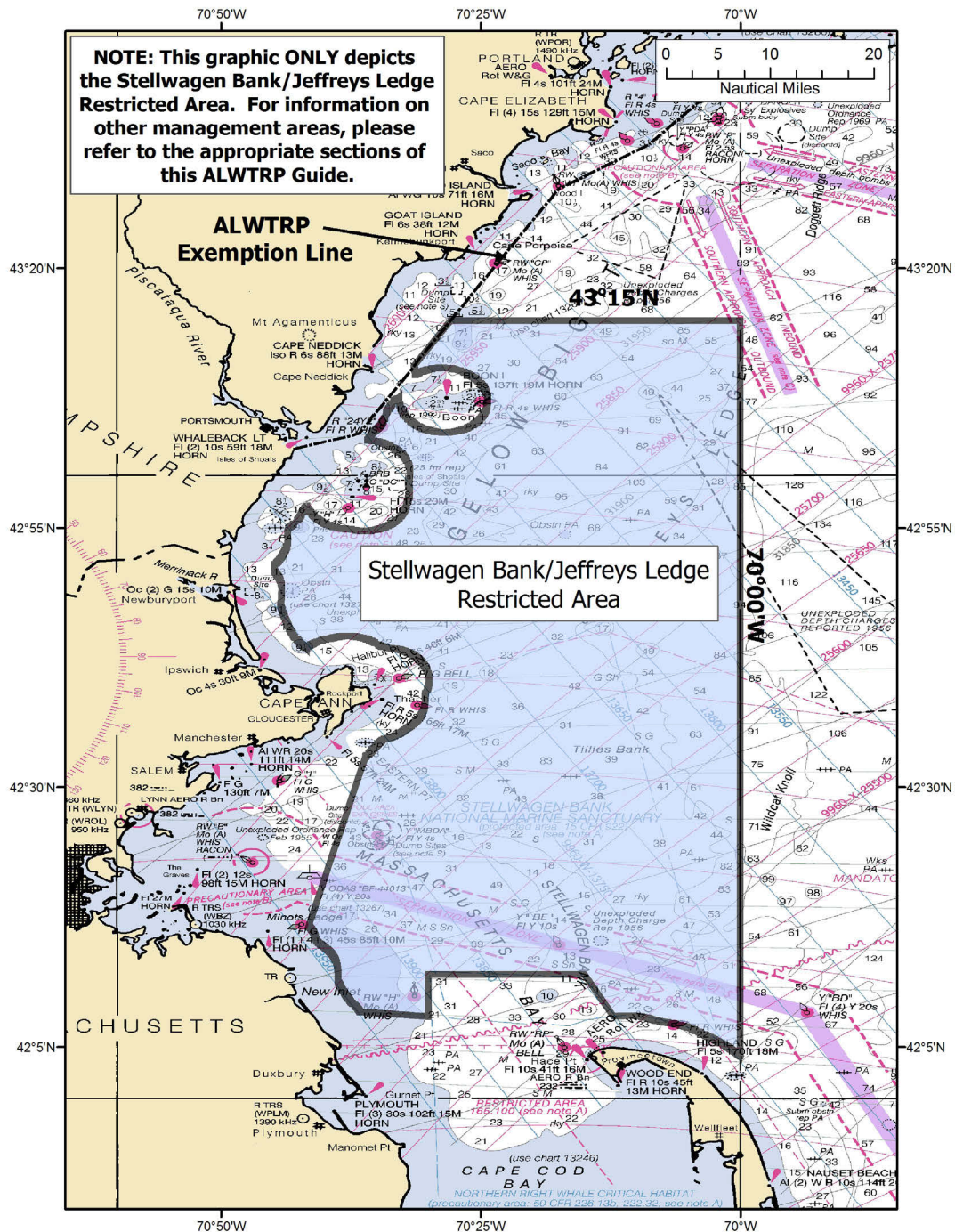
The Stellwagen Bank/Jeffreys Ledge Restricted Area includes all federal waters of the Gulf of Maine (except those designated as the Massachusetts Restricted Area) that lie south of 43°15'N and west of 70°00'W.

DATES	RESTRICTIONS/REQUIREMENTS SUMMARY
Year-round	<ul style="list-style-type: none"> <li>• Universal requirements</li> <li>• Gear marking- <b>RED</b> or <b>RED &amp; GREEN</b> if overlapping Jeffreys Ledge Gear Marking Area (page 30) or the following colors for <u>minimum trap per trawl exemption areas</u> <ul style="list-style-type: none"> <li>• <b>Single traps in exempted MA State waters in LMA1-RED &amp; WHITE</b></li> <li>• <b>Single traps in exempted MA state waters in LMA 2- RED &amp; BLACK</b></li> <li>• <b>Single traps in exempted MA state waters in Outer Cape- RED &amp; YELLOW</b></li> </ul> </li> <li>• Weak links ≤ 600 lbs breaking strength</li> <li>• Sinking groundline</li> <li>• Minimum number of traps per trawl restrictions (see below)</li> </ul>

### TRAP RESTRICTIONS

Area	Minimum Number of Traps Per Trawl
ME Zones A-G (3-6 miles)*	3
ME Zones A-C (6-12 miles)*	5
ME Zones D-G (6-12 miles)*	10
ME Zones A-E (12+ miles)	15
ME Zones F-G (12+ miles)	15 (Mar 1-Oct 31)
	20 (Nov 1-Feb 28/29)
LMA 1 (3-12 miles)	10
LMA 1 (12+ miles)	20
Outer Cape (3-12 miles)	10
Outer Cape (12+ miles)	20
LMA 2 (3-12 miles)	10
LMA 2 (12 + miles)	15

# Northeast Trap/Pot Management Areas Stellwagen Bank/Jeffreys Ledge Restricted Area



*This management area overlaps the following additional management areas. Please see the pages below for more information:*

- Massachusetts Restricted Area page 18*
- Northern Nearshore Trap/Pot Waters page 24*
- Jeffreys Ledge Gear Marking Area page 30*

# Northeast Trap/Pot Management Areas

## Great South Channel Restricted Area

### LOCATION DESCRIPTION

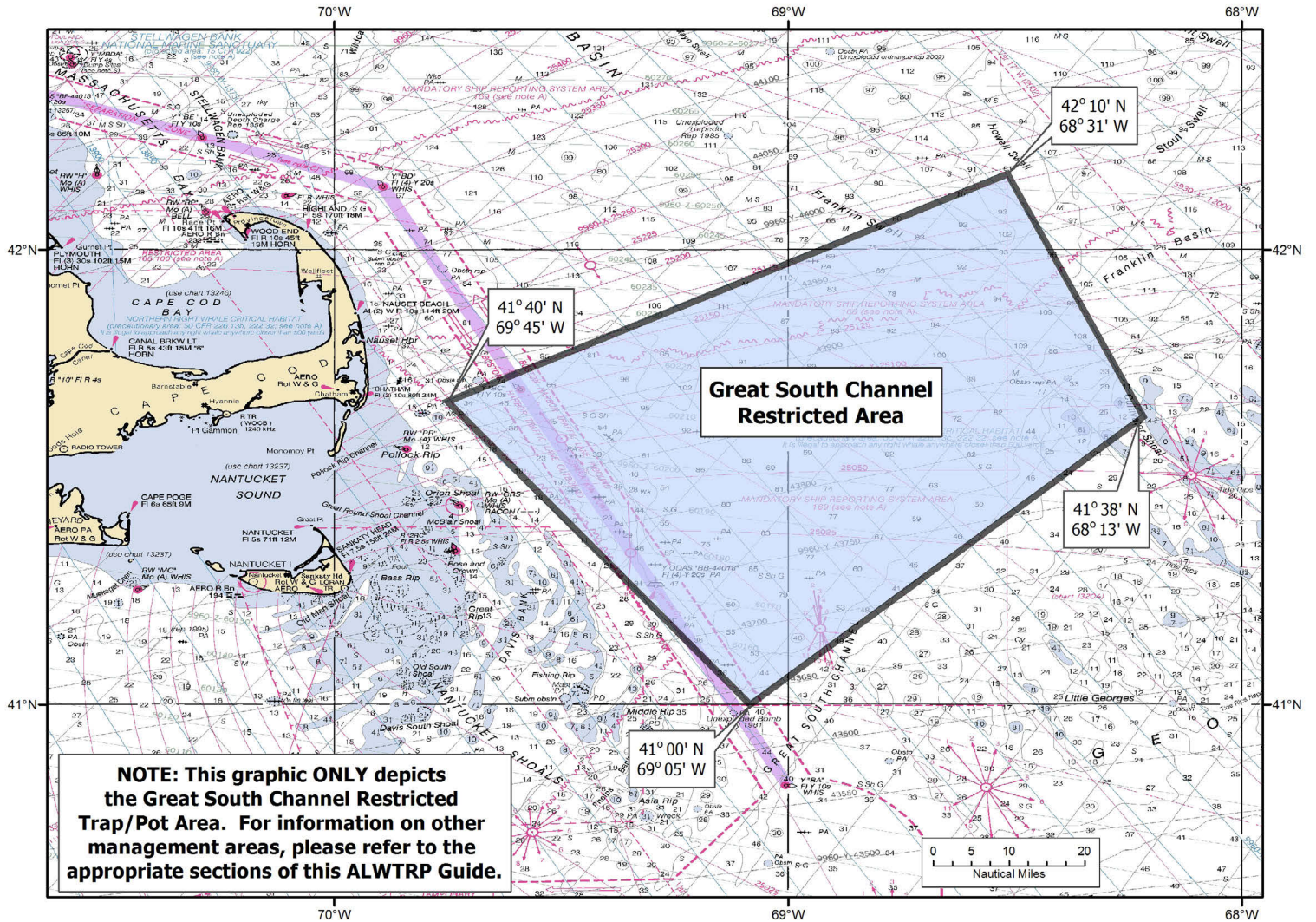
The Great South Channel Restricted Trap/Pot Area includes the area bounded by: 41°40'N/ 69°45'W; 41°00'N / 69°05'W; 41°38'N / 68°13'W; and 42°10'N / 68°31'W.

DATES	RESTRICTIONS/REQUIREMENTS SUMMARY
April 1-June 30	CLOSED to ALL trap/pot fishing
July 1- March 31	<ul style="list-style-type: none"> <li>• Universal requirements</li> <li>• Gear Marking- <b>RED</b> (areas overlapping LMA 2 and/or Outer Cape LMA), <b>BLACK</b> (areas overlapping LMA 2/3 Overlap and/or LMA3)</li> <li>• Weak links no greater than 600 lb in area overlap with LMA2 and/or OC, and no greater than 1,500 lb. in areas that overlap with LMA 2/3 and/or LMA3</li> <li>• Sinking groundline</li> <li>• Minimum number of traps per trawl restrictions (see below)</li> </ul>

### TRAP REQUIREMENTS

Area	Minimum Number of Traps Per Trawl
Outer Cape (12+ miles)	20
LMA 2 (12 + miles)	15
LMA 2/3 Overlap (12+ miles)	20
LMA 3 (12+ miles)	20

# Northeast Trap/Pot Management Areas Great South Channel Restricted Area



*This management area overlaps the following additional management areas. Please see the pages below for more information:*

*Massachusetts Restricted Area page 18*

*Northern Nearshore Trap/Pot Waters page 24*

# Northeast Trap/Pot Management Areas

## Northern Nearshore Waters (Northeast)

LOCATION DESCRIPTION
Northern Nearshore Lobster Waters includes all Federal waters of EEZ Nearshore Management Area 1, Area 2, and the Outer Cape Lobster Management Area (as defined in the American Lobster Fishery regulations at 50 CFR 697.18), with the exception of the Great South Channel Restricted Trap/Pot Area, Massachusetts Bay Restricted Area, Stellwagen Bank/Jeffreys Ledge Restricted Area, and exempted waters (see Supplement A-Exempted Areas).

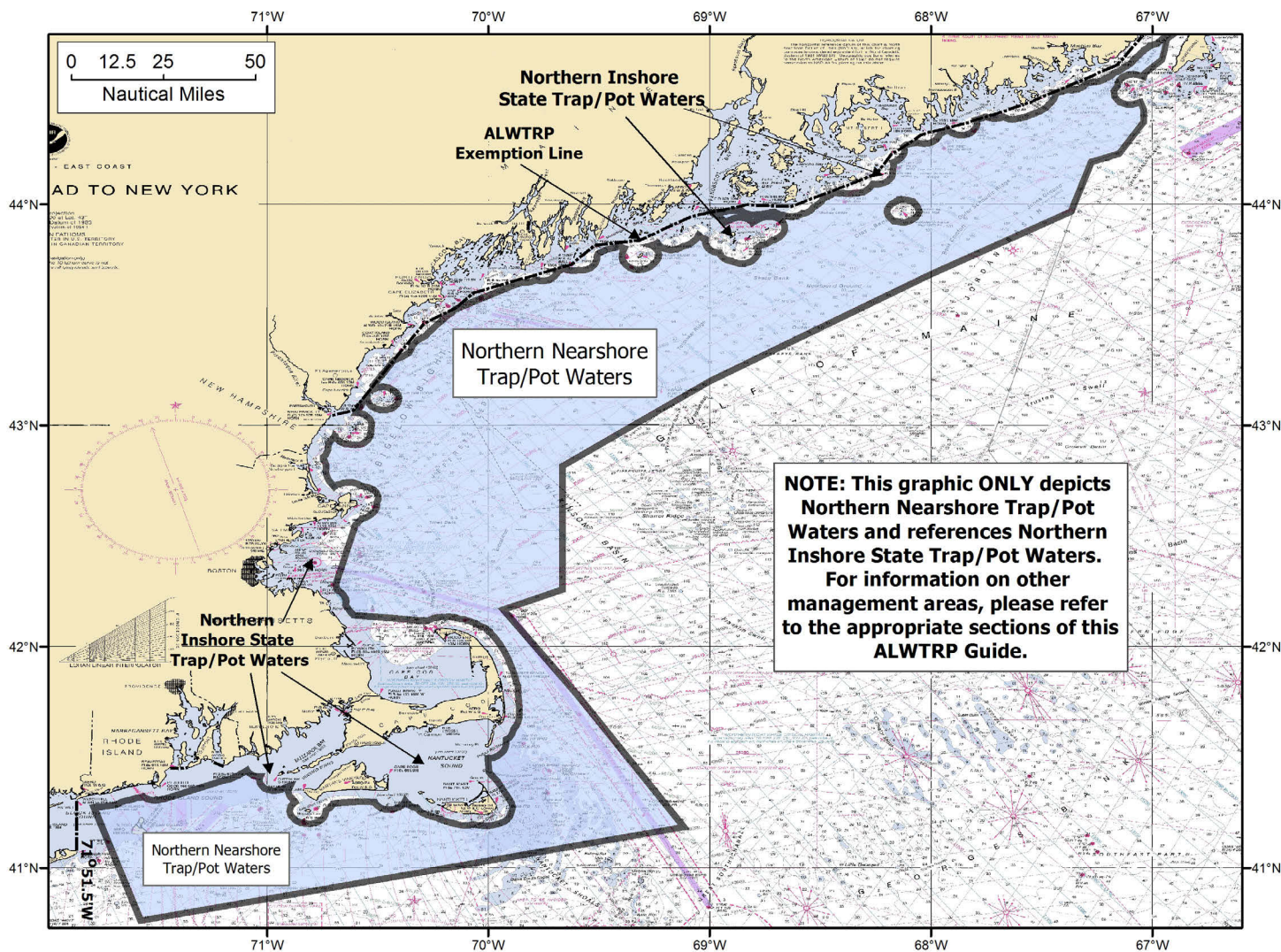
DATES	RESTRICTIONS/REQUIREMENTS SUMMARY
<b>Year-round</b>	<ul style="list-style-type: none"> <li>• Universal requirements</li> <li>• Gear marking- <b>RED</b> or <b>RED &amp; GREEN</b> if overlapping Jeffreys Ledge Gear Marking Area (page 30) or <b>RED &amp; PURPLE</b> if overlapping Jordan Basin Gear Marking Area (page 31)</li> <li>• Weak links ≤ 600lbs breaking strength</li> <li>• Sinking groundline</li> <li>• Minimum number of traps per trawl restrictions (see below)</li> </ul>

TRAP RESTRICTIONS	
Area	Minimum Number of Traps Per Trawl
ME Zones A-G (3-6 miles)*	3
ME Zones A-C (6-12 miles)*	5
ME Zones D-G (6-12 miles)*	10
ME Zones A-E (12+ miles)	15
ME Zones F-G (12+ miles)	15 (Mar 1-Oct 31)
	20 (Nov 1-Feb 28/29)
LMA 1 (3-12 miles)	10
LMA 1 (12+ miles)	20
Outer Cape (3-12 miles)	10
Outer Cape (12+ miles)	20
LMA 2 (3-12 miles)	10
LMA 2 (12 + miles)	15

\* The pocket waters and 6-mile line as defined on pages 7-8.



# Northeast Trap/Pot Management Areas Northern Nearshore Waters (Northeast)



*This management area overlaps the following additional management areas. Please see the pages below for more information:*

- Massachusetts Restricted Area page 18*
- Stellwagen Bank/Jeffreys Ledge Restricted Area page 20*
- Great South Channel Restricted Area page 22*
- Northern Nearshore Trap/Pot Waters page 24*
- Jeffreys Ledge Gear Marking Area page 30*
- Jordan Basin Gear Marking Area page 31*

# Northeast Trap/Pot Management Areas Southern Nearshore Waters (Northeast)

## LOCATION DESCRIPTION

Southern Nearshore Trap/Pot Waters includes all state and Federal waters which fall within EEZ Nearshore Management Area 4, EEZ Nearshore Management Area 5, and EEZ Nearshore Management Area 6 (as defined in the American Lobster Fishery regulations in 50 CFR 697.18), and inside the 100 fathom contour line from 35°30' N. lat. south to 27°51' N. lat. and extending inshore to the shoreline or exemption line, with the exception of the exempted waters (see Supplement A-Exempted Areas).

A small portion of these waters includes portions of LMA 6 (near the mouth of Long Island Sound), and hence, have year-round requirements, as noted here.

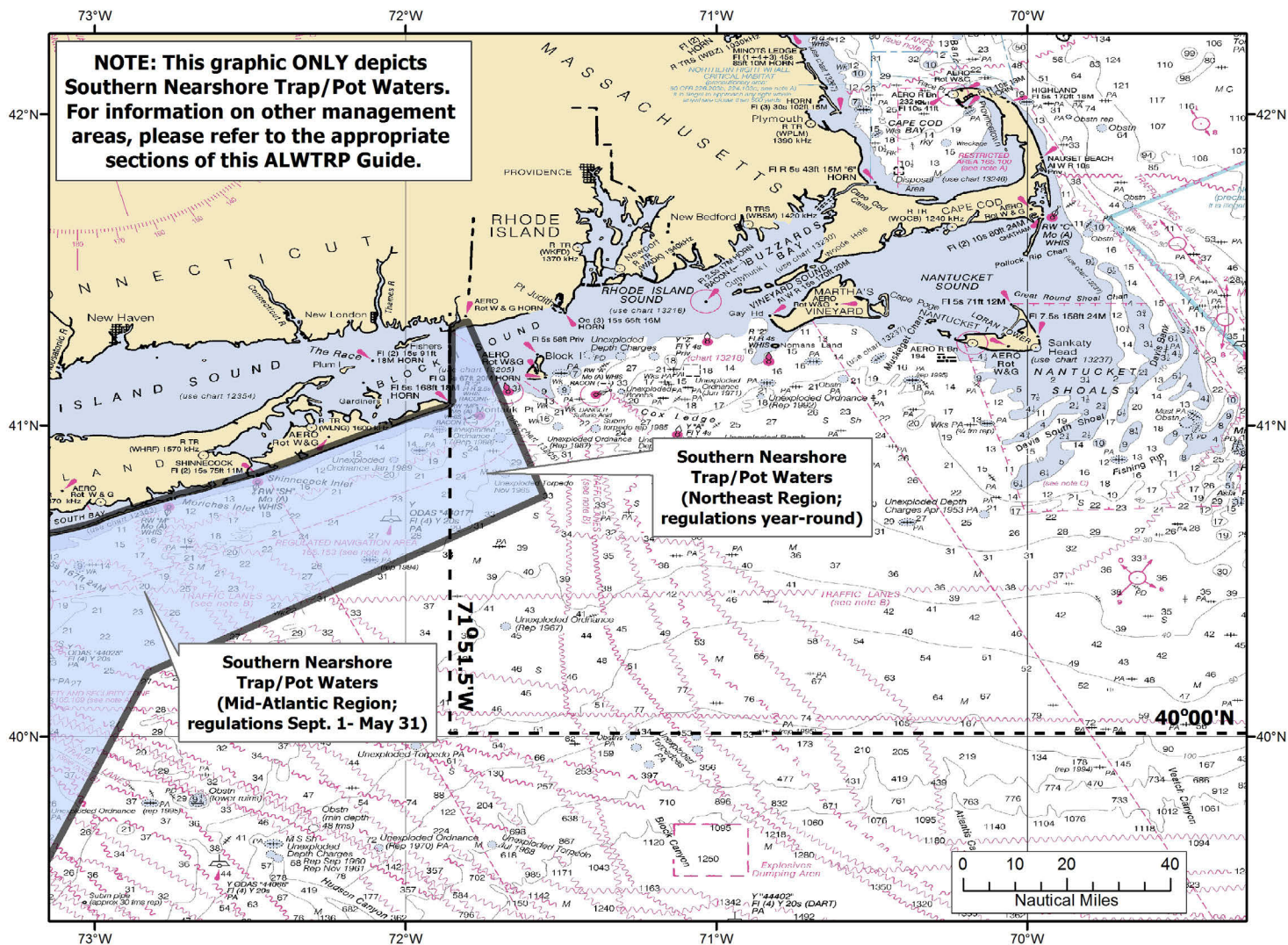
The remaining waters of the Southern Nearshore Trap/Pot Waters management area will have seasonal requirements as noted in the “Mid-Atlantic” and “Southeast Region Trap/Pot Regulations” Trap/Pot Guides (available on [www.greateratlantic.fisheries.noaa.gov/whaletrp](http://www.greateratlantic.fisheries.noaa.gov/whaletrp)).

DATES	RESTRICTIONS/REQUIREMENTS SUMMARY
Year-round	<ul style="list-style-type: none"> <li>• Universal requirements</li> <li>• Gear marking- <b>ORANGE</b></li> <li>• Weak links ≤ 600 lbs breaking strength</li> <li>• Sinking groundlines</li> <li>• Minimum number of traps per trawl restrictions (see below)</li> <li>• <b>Please note:</b> The remaining waters of the Southern Nearshore Trap/Pot Waters management area will have seasonal requirements as noted in the “Mid-Atlantic” and “Southeast Region Trap/Pot Management Areas” descriptions to follow.</li> </ul>

## TRAP RESTRICTIONS

Area	Minimum Number of Traps Per Trawl
LMA 4,5,6	no minimum

# Northeast Trap/Pot Management Areas Southern Nearshore Waters (Northeast)



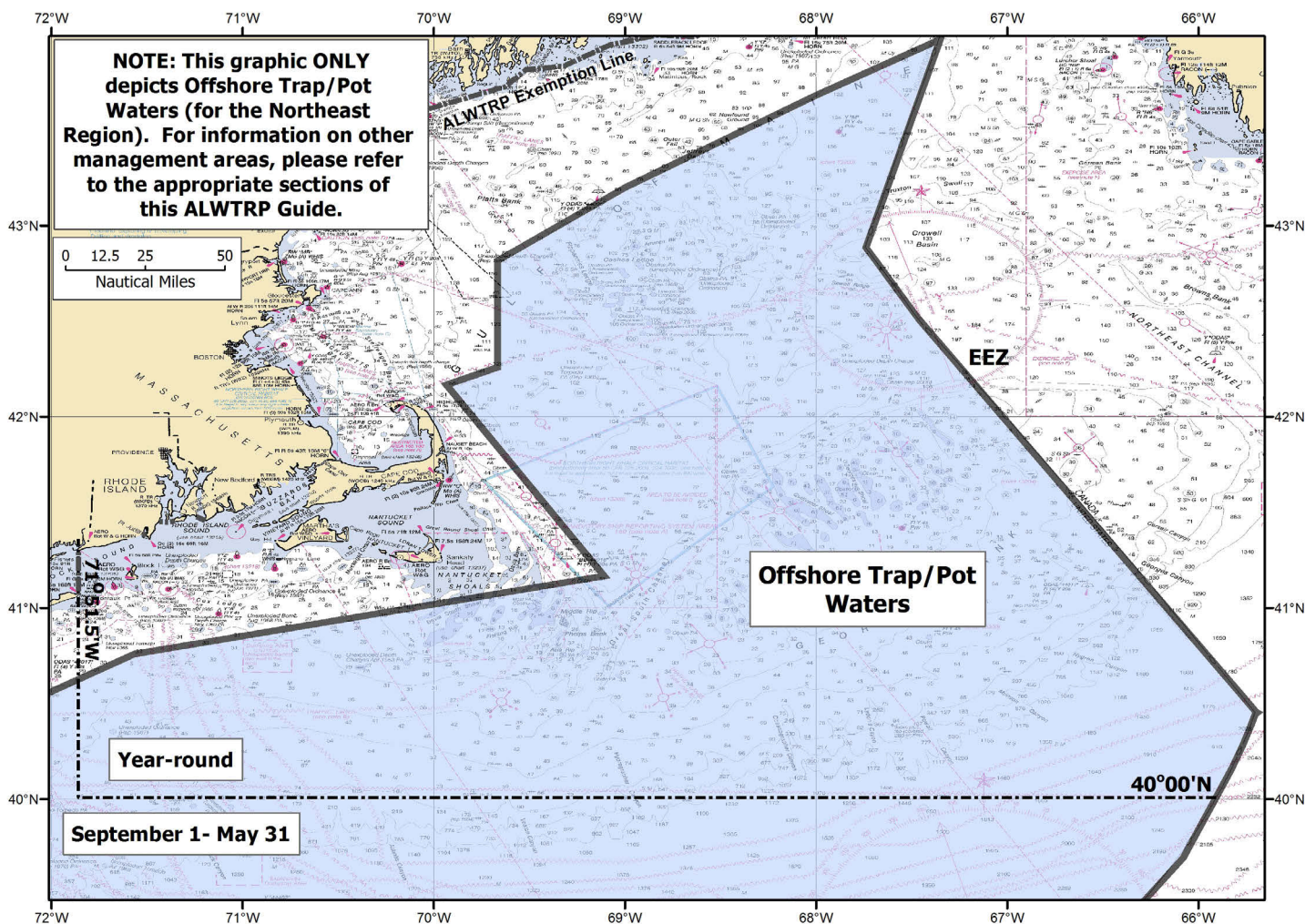
# Northeast Trap/Pot Management Areas Offshore Waters (Northeast)

LOCATION DESCRIPTION
Offshore Trap/Pot Waters includes all Federal waters of the EEZ Offshore Management Area 3 (including the areas known as the Area 2/3 Overlap and 3/5 Overlap, as defined in the American Lobster Fishery regulations found at 50 CFR 697.18), with the exception of the Great South Channel Restricted Trap/Pot Area, and extending south along the 100fa contour line from 35°30' N. lat. south to 27°51' N. lat., and east to the eastern edge of the EEZ.

DATES	RESTRICTIONS/REQUIREMENTS SUMMARY
Year-round	<ul style="list-style-type: none"> <li>• Universal requirements</li> <li>• Gear marking- <b>BLACK</b> or <b>BLACK &amp; PURPLE</b> if overlapping <b>Jordan Basin Gear Marking Area (page 31)</b></li> <li>• Weak links ≤ 1500 lbs in offshore, 2,000 lbs if red crab trap/pot</li> <li>• Sinking groundline</li> <li>• Minimum number of traps per trawl restrictions (see below)</li> </ul>

TRAP RESTRICTIONS	
Area	Minimum Number of Traps Per Trawl
ME Zones A-E (12+ miles)	15
ME Zones F-G (12+ miles)	15 (Mar 1-Oct 31) 20 (Nov 1-Feb 28/29)
LMA 2/3 Overlap (12+ miles)	20
LMA 3 (12+ miles)- North of 40°	20

# Northeast Trap/Pot Management Areas Offshore Waters (Northeast)



*This management area overlaps the following additional management areas. Please see the pages below for more information:*

*Great South Channel Restricted Area page 22*

*Jeffreys Ledge Gear Marking Area page 30*

*Jordan Basin Gear Marking Area page 31*

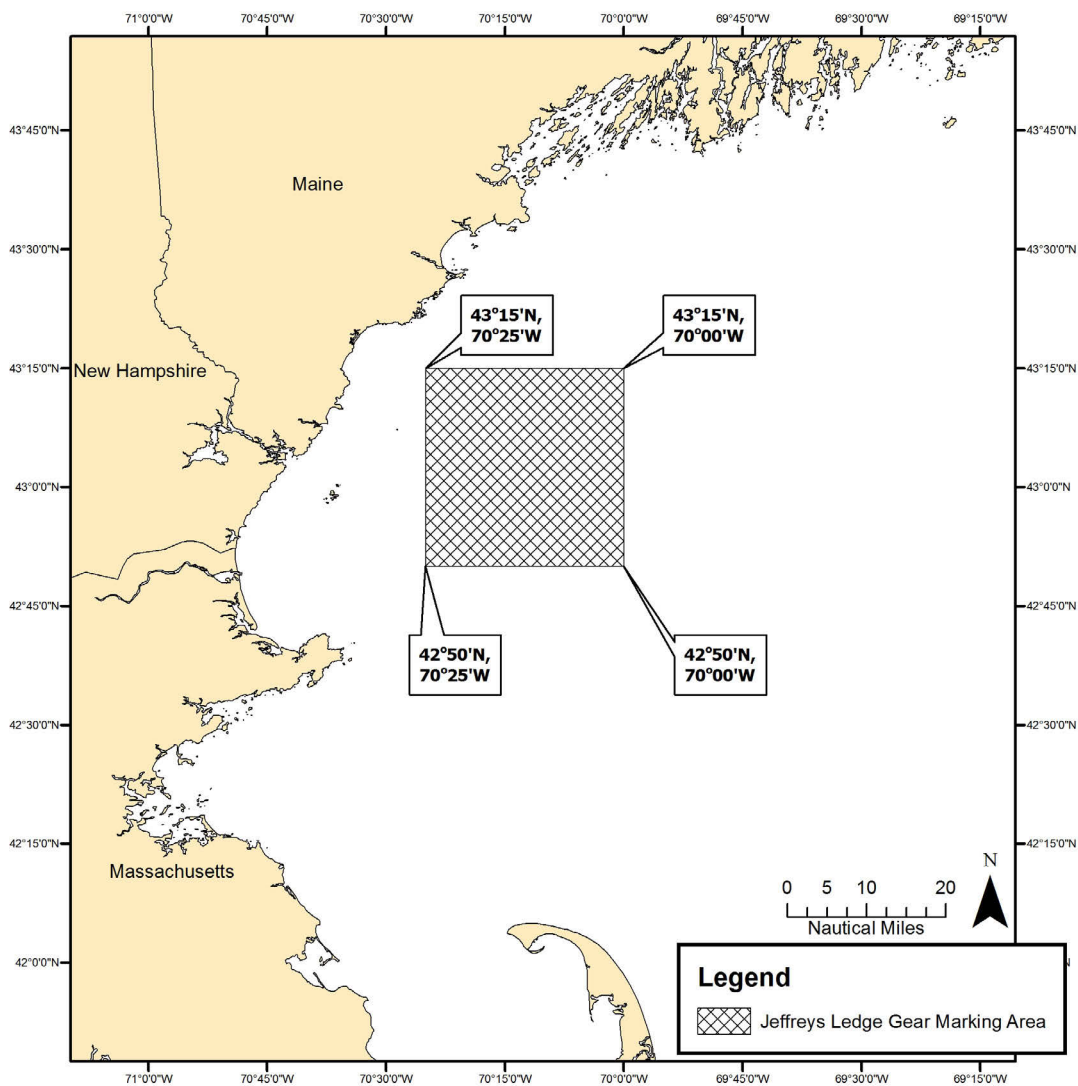
# Northeast Trap/Pot Management Areas

## Jeffreys Ledge Gear Marking Area

### LOCATION DESCRIPTION

Jeffreys Ledge management area includes the area bounded by by: 43°15'N/ 70°25'W; 43°15'N/ 70°00'W; 42°50'N/ 70°00'W; and 42°50'N/ 70°00'W.

DATES	RESTRICTIONS/REQUIREMENTS SUMMARY
Year-round	<ul style="list-style-type: none"> <li>• Gear marking- <b>RED &amp; GREEN</b></li> </ul>



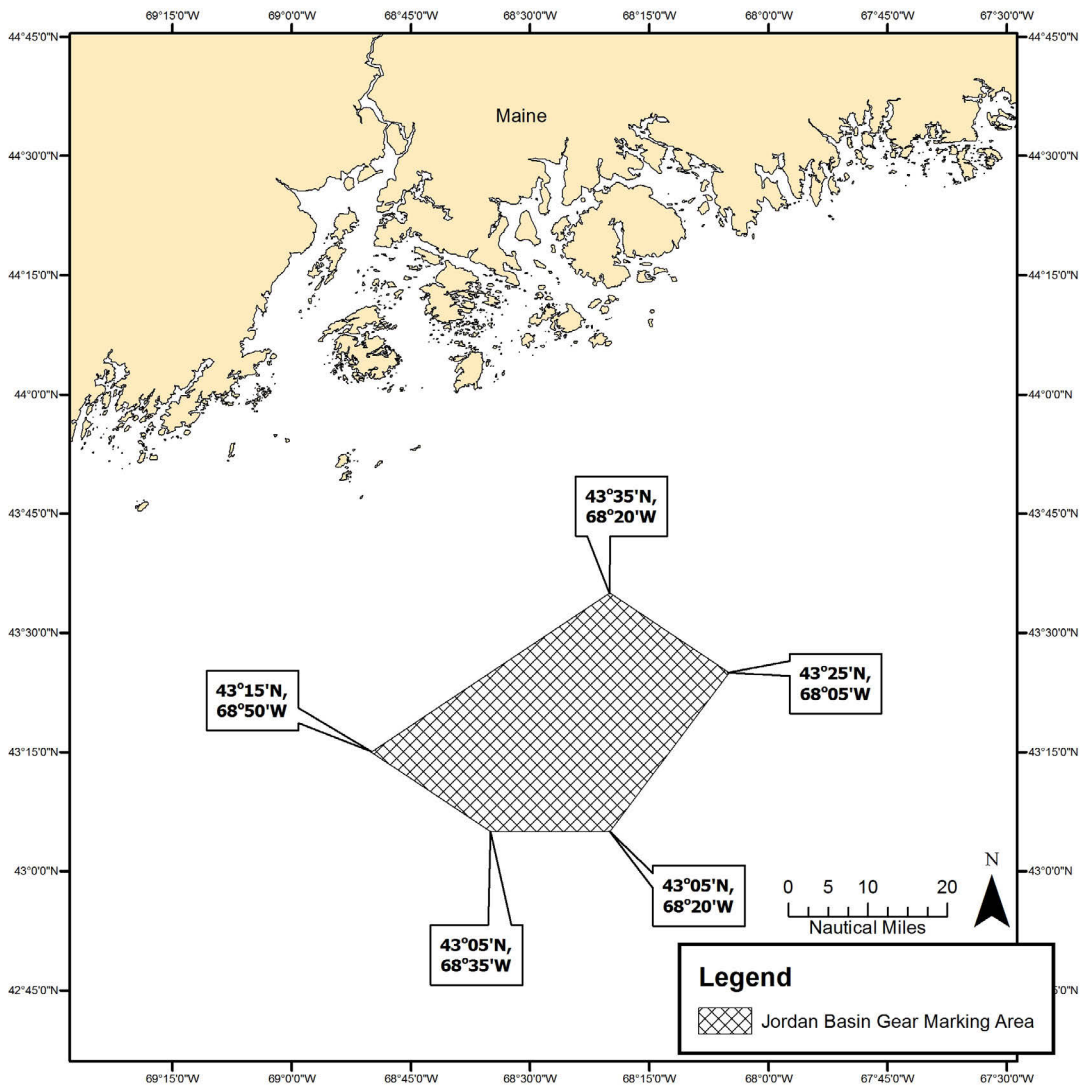
# Northeast Trap/Pot Management Areas

## Jordan Basin Gear Marking Area

### LOCATION DESCRIPTION

Jordan Basin management area includes the area bounded by by: 43°15'N/ 68°50'W; 43°35'N/ 68°20'W; 43°25'N/ 68°05'W; 43°05'N/ 68°20'W; and 43°05'N/ 68°35'W.

DATES	RESTRICTIONS/REQUIREMENTS SUMMARY
Year-round	<ul style="list-style-type: none"> <li>• Gear marking- <b>RED &amp; PURPLE</b> if overlapping LMA1, <b>BLACK &amp; PURPLE</b> if overlapping Offshore Trap/Pot Waters</li> </ul>



# Plan Exempted Areas- Northeast

## MAINE

The following Maine waters are exempt from ONLY the Plan's Minimum Trap Per Trawl Requirements:

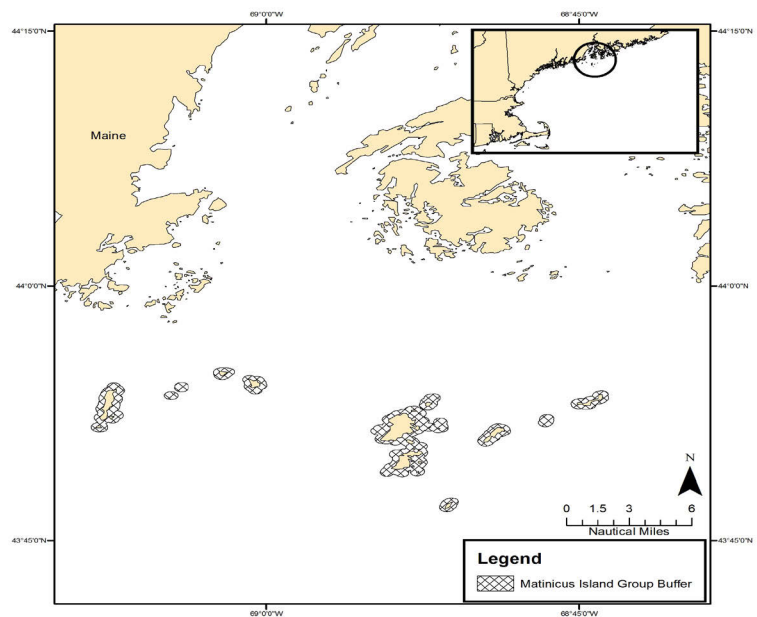
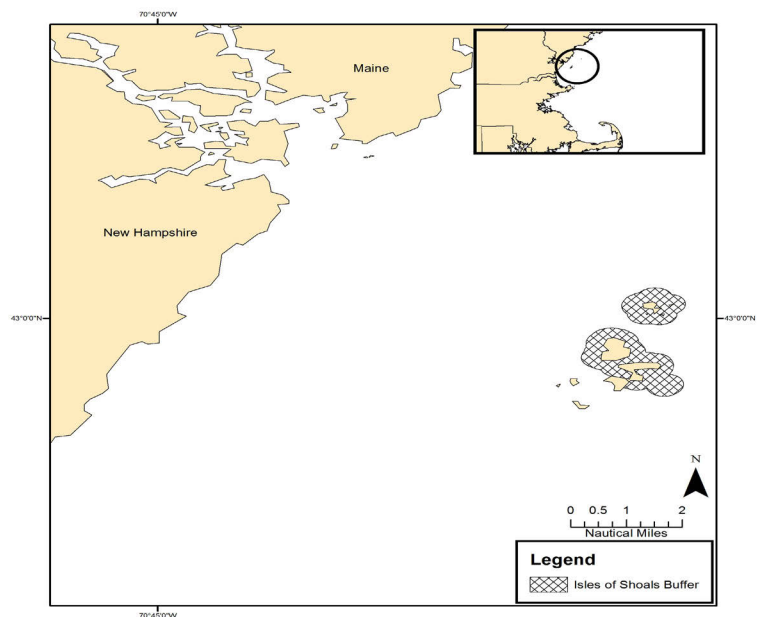
### MIN. TRAP/TRAWL EXEMPTED AREAS

Waters within 1/4 mile the following islands in Maine:

- Monhegan Island
- Matinicus Island
- Ragged Island
- Matinicus Island group--Metinic, Small Green, Large Green, Seal, and Wooden Ball; and
- Isle of Shoals group--Duck, Appledore, Cedar, and Smuttynose

Minimum trap per trawl exempted areas are also required to have area specific gear marking colors for single traps:

Isle of Shoals single traps-- RED & ORANGE



*Operations in these waters are expected to comply other Plan requirements.*



# Plan Exempted Areas- Northeast

## MAINE (continued)

The following Maine waters are exempt from the ENTIRE Atlantic Large Whale Take Reduction Plan.

### PLAN EXEMPTED AREA BOUNDARIES

Waters landward of the 72 COLREGS lines from Maine through Florida are exempt from Plan requirements with certain exceptions. The following COLREGS areas in Maine are NOT EXEMPT from Plan regulations:

- Casco Bay is NOT EXEMPT

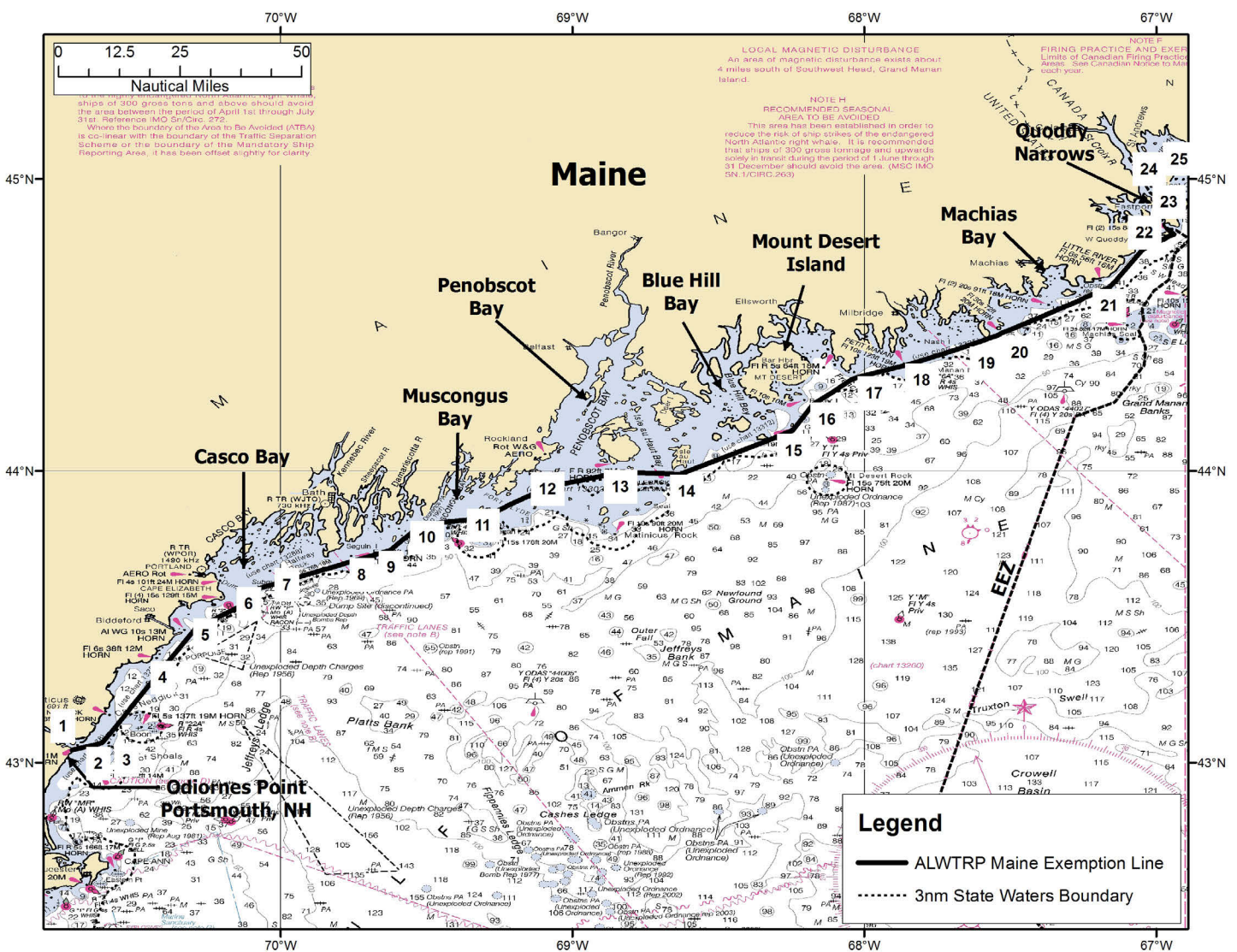
Exempted areas are those landward of a line which connects the points below  
(see corresponding map on page 34)

1. Odiornes Pt. Portsmouth NH: 43° 02.55' N 70°43.33' W	14. R 2 Bell – Roaring Bull Ledge, Isle Au Haut: 43°59.36' N 68°37.95' W
2. R 2KR Whistle – Kittery Point: 43°02.93' N 70°41.47' W	15. Southern point Great Duck I: 44°08.36' N 68°14.75' W
3. N 2MR – Murray Rock: 43°04.06' N, 70°36.70' W	16. R 8BI Whistle – Baker I: 44°13.55' N 68°10.71' W
4. RW CP Whistle – Cape Porpoise: 43°20.23' N 70°23.64' W	17. R 2S Bell – Schoodic I: 44°19.08' N 68° 02.05' W
5. RW WI Whistle – Wood: 43°27.63' N 70°17.48' W	18. R N 2 – Petit Manan I: 44°21.66' N 67°51.78' W
6. G 1 – East Hue and Cry: 43°31.94' N 70°08.68' W	19. R 2SR Bell – Seahorse Rock, west of Great Wass I Freeman Rock – east of Great Wass I: 44°27.77' N 67°32.86' W
7. RG N BS – Bulwark Shoal: 43°36.04' N 70°03.98' W	20. Obstruction – southeast of Cutler: 44°37.70' N 67°09.75' W
8. R 20ML Bell - Mile Ledge: 43°41.44' N 69°45.27' W	21. R 28M Whistle – Baileys Mistake: 44°45.51' N 67°02.87' W
9. R 2BR Bell – Bantam Rock: 43°43.64' N 69°37.58' W	22. R N 2 – Morton Ledge: 44°47.36' N 66°59.25' W
10. GR C PL – Pemaquid Ledge: 43°48.96' N 69°31.15' W	23. G 1 Whistle – West Quoddy Head: 44°48.64' N 66°56.43' W
11. R 2 OM Whistle – Old Man Ledge: 43°50.28' N 69°18.86' 44°25.74' N 67° 38.39' W	24. R N 2 – Quoddy Narrows: 44°49.67' N 66°57.77' W
12. G 5TB Bell – Two Bush Channel: 43°56.72' N 69°04.89' W	
13. R 2A Bell – Old Horse Ledge: 43°59.83' N 68°50.06' W	

# Plan Exempted Areas- Northeast

## MAINE (continued)

The following Maine waters are exempt from the ENTIRE Atlantic Large Whale Take Reduction Plan (continued from page 33)



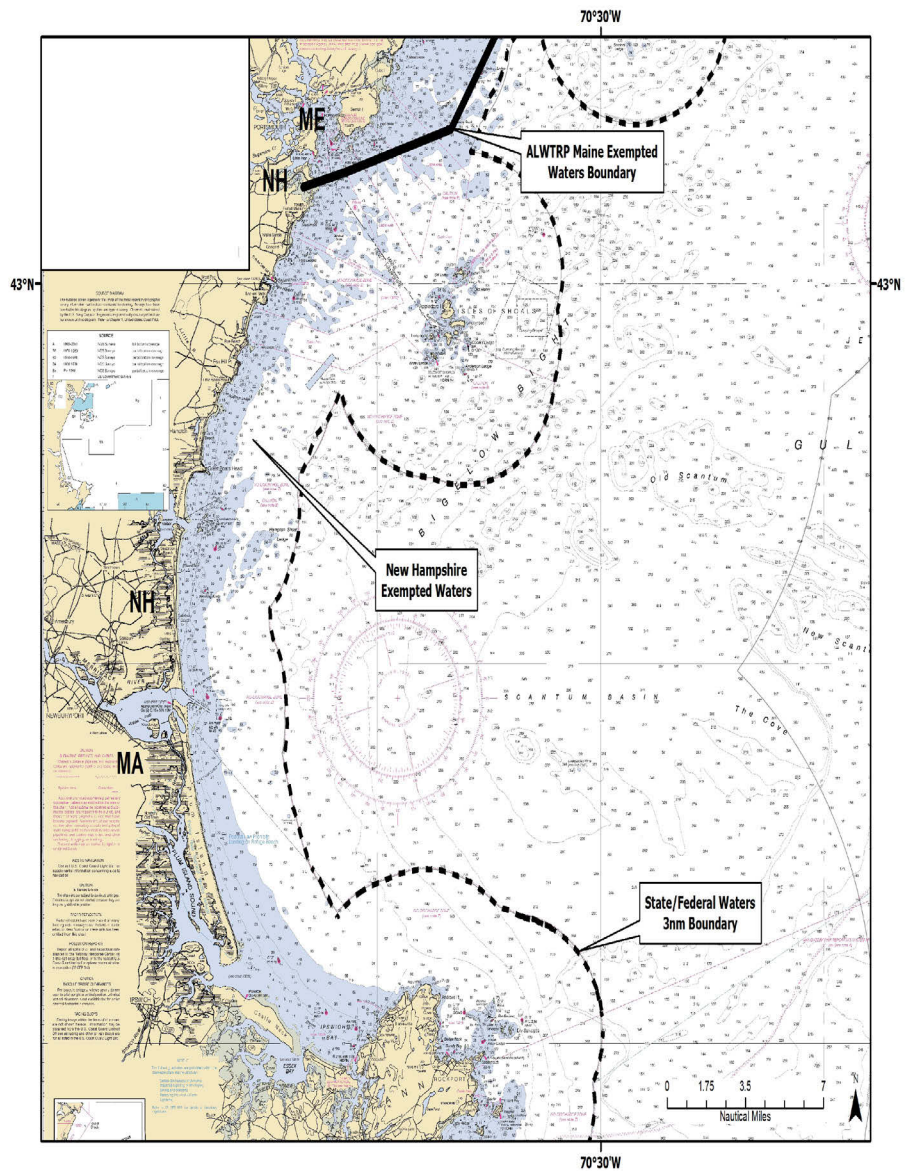
# Plan Exempted Areas- Northeast

## NEW HAMPSHIRE

ALL New Hampshire state waters are exempt from ONLY the Plan's Minimum Trap Per Trawl Requirements.

### MIN. TRAP/TRAWL EXEMPTED AREAS

- All New Hampshire state waters



*Operations in these waters are expected to comply other Plan requirements.*

# Plan Exempt Areas- Northeast

## NEW HAMPSHIRE (continued)

The following New Hampshire waters are exempt from the ENTIRE Atlantic Large Whale Take Reduction Plan.

### PLAN EXEMPTED AREA BOUNDARIES

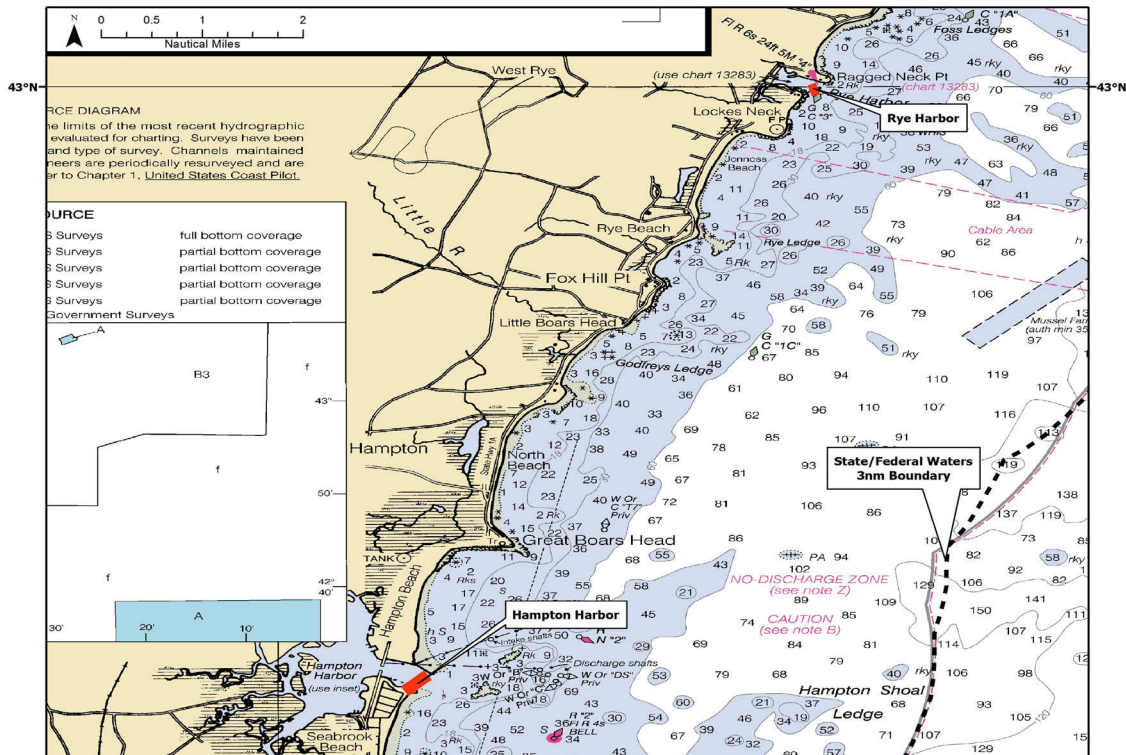
Waters landward of the 72 COLREGS lines are exempt from Plan requirements with certain exceptions. The following COLREGS areas in New Hampshire are NOT EXEMPT from Plan regulations:

- Portsmouth Harbor is NOT EXEMPT

Areas are landward of the following lines:

A line from 42°53.691' N. lat., 70°48.516' W. long. to 42°53.516' N. lat., 70°48.748' W. long. (Hampton Harbor).

A line from 42°59.986' N. lat., 70°44.654' W. long. to 42°59.956' N., 70°44.737' W. long. (Rye Harbor).

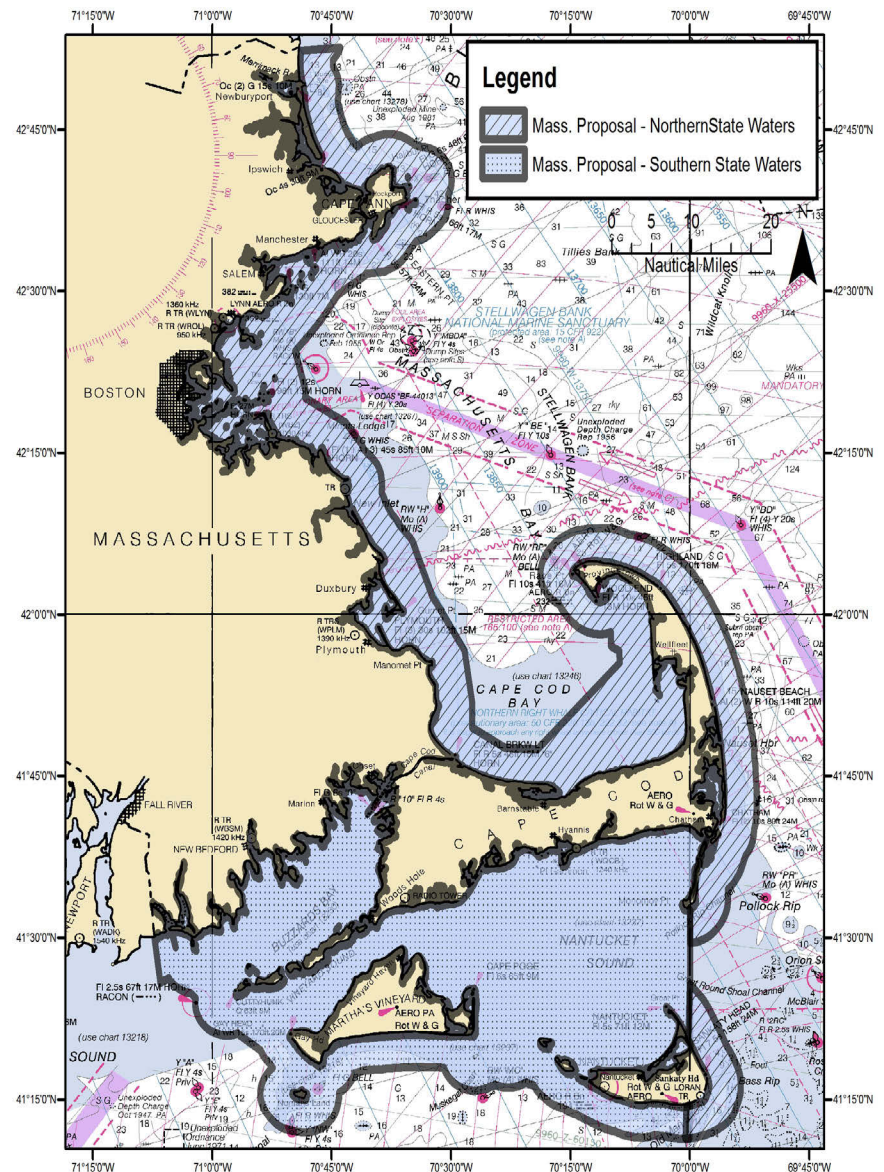


# Plan Exempted Areas- Northeast

## MASSACHUSETTS

The following Massachusetts state waters are exempt from **ONLY** the Plan's Minimum Trap Per Trawl Requirements.

MIN. TRAP/TRAWL EXEMPTED AREAS
<p>From the New Hampshire border to 70°W longitude south of Cape Cod, waters in EEZ Nearshore Management Area 1 and the Outer Cape Lobster Management Area (as defined in the American Lobster Fishery regulations under § 697.18), from the shoreline to 3 nautical miles from shore, and including waters of Cape Cod Bay southeast of a straight line connecting 41°55.8'N lat., 70°8.4'W long. and 41°47.2'N lat., 70°19.5'W long.</p>
<p>From 70°W longitude south of Cape Cod to the Rhode Island border, all Massachusetts state waters in EEZ Nearshore Management Area 2 and the Outer Cape Lobster Management Area (as defined in the American Lobster Fishery regulations under §697.18), including federal waters of Nantucket Sound west of 70°W longitude.</p>
<p>The following minimum trap per trawl exempted areas are also required to have area specific gear marking colors for single traps:</p>
<p>Single traps in exempt MA state waters in LMA 1-- RED &amp; WHITE</p>
<p>Single traps in exempt MA state waters in LMA 2-- RED &amp; BLACK</p>
<p>Single traps in exempt MA state waters in Outer Cape-- RED &amp; YELLOW</p>



*Operations in these waters are expected to comply other Plan requirements.*

# Plan Exempted Areas- Northeast

## MASSACHUSETTS (continued)

The following Massachusetts state waters are exempt from the ENTIRE Atlantic Large Whale Take Reduction Plan

### PLAN EXEMPTED AREA BOUNDARIES

Areas landward of the following lines:

Waters landward of the first bridge over any embayment, harbor, or inlet

Massachusetts state waters are not included in the 72 COLREGS general exemption.

# Plan Exempted Areas- Northeast

## RHODE ISLAND

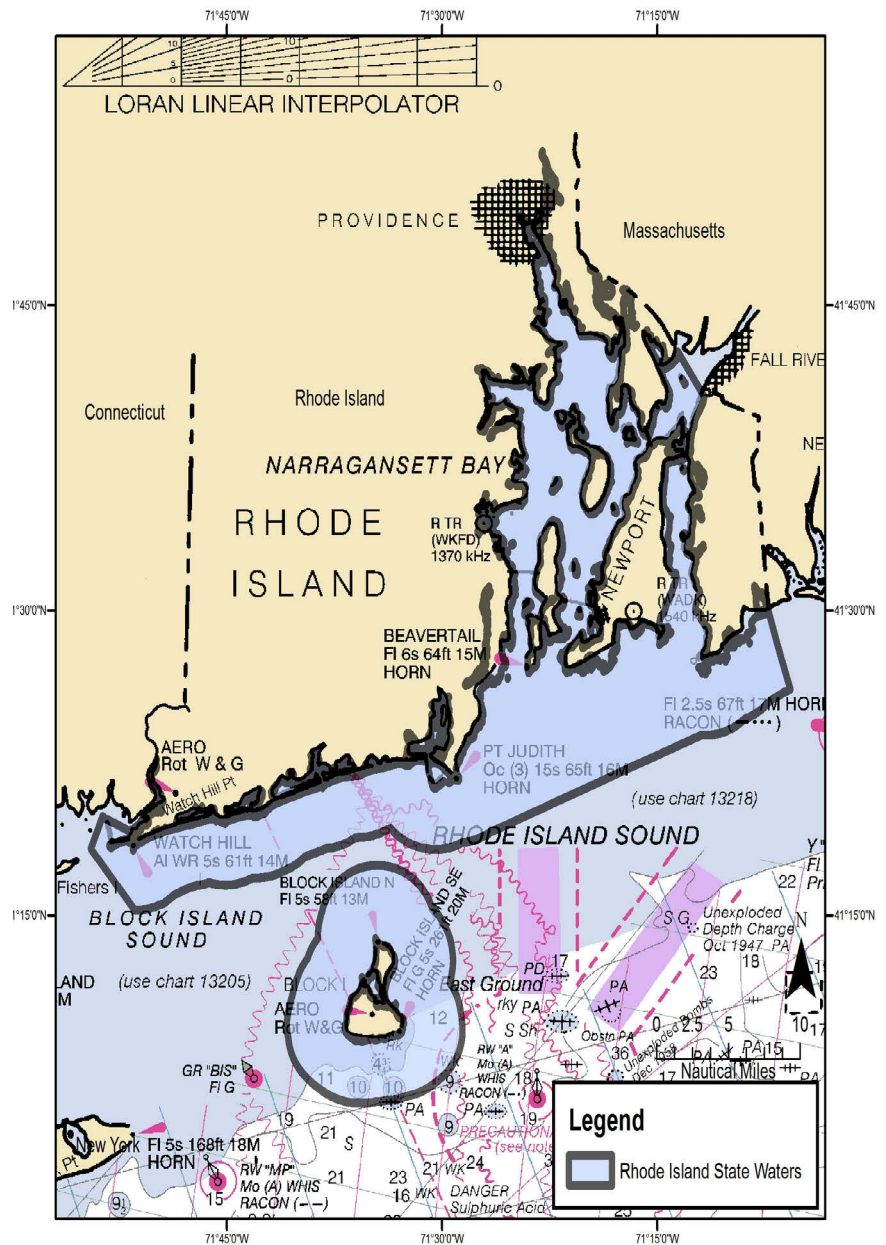
ALL Rhode Island state waters are exempt from ONLY the Plan's Minimum Trap Per Trawl Requirements.

### MIN. TRAP/TRAWL EXEMPTED AREAS

- All Rhode Island State waters

Minimum trap per trawl exempted areas also required to have area specific gear marking colors for single traps:

Single traps in exempt RI state waters  
-- RED & BLUE



*Operations in these waters are expected to comply other Plan requirements.*

# Plan Exempted Areas- Northeast

## RHODE ISLAND (continued)

The following Rhode Island state waters are exempt from the ENTIRE Atlantic Large Whale Take Reduction Plan

### PLAN EXEMPTED AREA BOUNDARIES

Waters landward of the 72 COLREGS lines

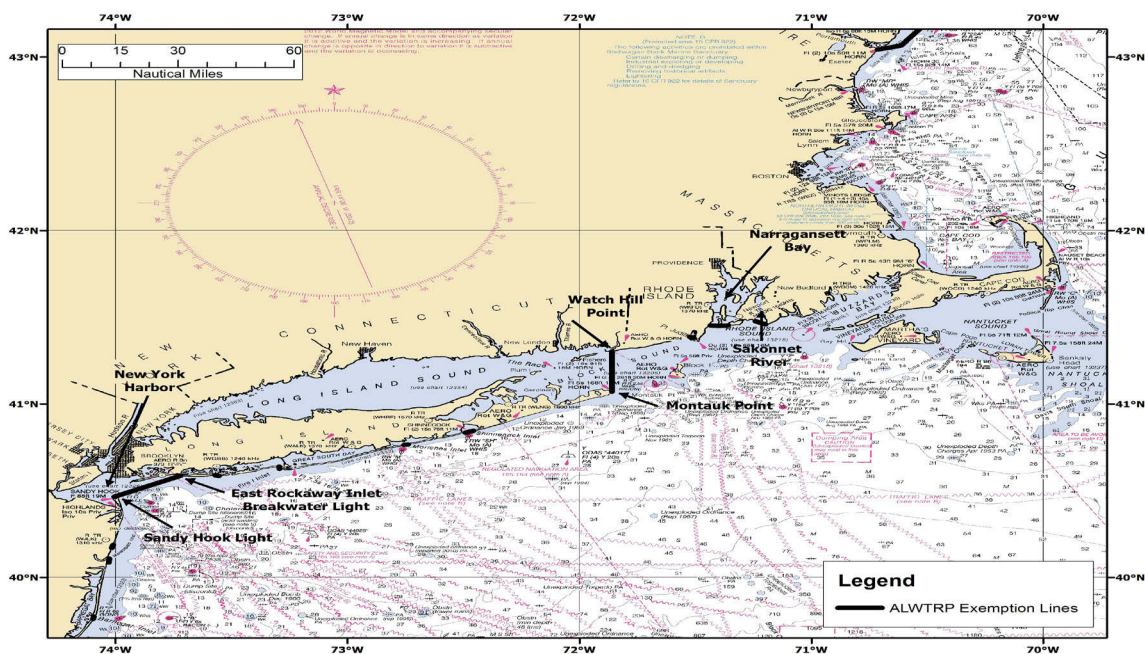
A line from 41°22.441' N. lat., 71°30.781' W. long. to 41°22.447' N lat., 71°30.893' W. long. (Pt. Judith Pond Inlet).

A line from 41°21.310' N. lat., 71°38.300' W. long. to 41°21.300' N. lat., 71°38.330' W. long. (Ninigret Pond Inlet).

A line from 41°19.875' N. lat., 71°43.061' W. long. to 41°19.879' N. lat., 71°43.115' W. long. (Quonochontaug Pond Inlet).

A line from 41°19.660' N. lat., 71°45.750' W. long. to 41°19.660' N. lat., 71°45.780' W. long. (Weekapaug Pond Inlet).

A line from 41°26.550'N. lat., 71°26.400'W. long. to 41°26.500'N. lat, 71°26.505'W. long. (Pettaquamscutt Inlet))







**NOAA  
FISHERIES**

**MAY 2015**

**[www.greateratlantic.fisheries.noaa.gov](http://www.greateratlantic.fisheries.noaa.gov)**

**OFFICIAL BUSINESS**

**National Marine Fisheries Service  
Greater Atlantic Regional Fisheries Office  
55 Great Republic Drive  
Gloucester, MA 01930**