



**NOAA
FISHERIES**

Atlantic Large Whale Take Reduction Plan

**Northeast
Gillnet Fisheries
Requirements and
Management Areas**

Contact Us For More Information

NOAA Fisheries Greater Atlantic Regional Office

Protected Resources Division
Large Whale Take Reduction Coordinator
55 Great Republic Drive
Gloucester, MA 01930
978-281-9328

NOAA Fisheries Greater Atlantic Gear Team

Northeast Fisheries Liaison
John Higgins
978-771-3669
John.Higgins@noaa.gov

Mid/South Atlantic Fisheries Liaison
Glenn Salvador
757-414-0128
Glenn.Salvador@noaa.gov

Or Visit the Atlantic Large Whale Take Reduction Website

www.greateratlantic.fisheries.noaa.gov/whaletrp/

CONTENTS

Overview 4

2014-2015 Northeast Gillnet Plan Updates 6

Northeast Gillnet Management Area Summary 7

Gillnet Gear Requirements 8

- **Universal Requirements 8**
- **Gillnet Panel Configuration 9**
- **Gear Marking 10**

Individual Management Area Requirements 11

- **Cape Cod Bay Restricted Area 12**
- **Stellwagen Bank/Jeffreys Ledge Restricted Area 14**
- **Great South Channel Restricted Gillnet Area (Including the Sliver Area) 16**
- **Other Northeast Gillnet Waters (Northeast) 18**
- **Jeffreys Ledge Gear Marking Area 20**
- **Jordan Basin Gear Marking Area 21**

Plan Exempted Areas 22



**NOAA
FISHERIES**

The Atlantic Large Whale Take Reduction Plan applies to the following fisheries:

Gillnets

- Northeast sink gillnet;
- Northeast anchored float gillnet;
- Northeast drift gillnet;
- Mid-Atlantic gillnet;
- Southeastern US Atlantic shark gillnet; and
- Southeast Atlantic gillnet.

Trap/Pots

- Northeast/Mid-Atlantic American lobster trap/pot;
- Atlantic blue crab trap/pot;
- Atlantic mixed species trap/pot which includes, but is not limited to: crab (red, Jonah, and rock), hagfish, finfish (black sea bass, scup, tautog, cod, haddock, pollock, redfish (ocean perch), and white hake), conch/whelk, and shrimp.

Atlantic Large Whale Take Reduction Plan

The Atlantic Large whale Take Reduction Plan (Plan) is a program to reduce the risk of serious injury and death of large whales caused by accidental entanglement in U.S. commercial trap/pot and gillnet fishing gear. The Plan is required by the Marine Mammal Protection Act and has been developed by NOAA's National Marine Fisheries Service (NMFS).

The Plan focuses on reducing entanglements of endangered right, humpback, and fin whales. Non-endangered minke whales also benefit from the Plan. Under the Endangered Species Act, Federal agencies are required to ensure that permitted activities (such as fishing) do not cause harm to, or jeopardize, the continued existence of any endangered species. Since the Plan measures are intended to reduce entanglements of right, humpback, and fin whales in fishing gear, these measures also help to avoid the likelihood that Federally permitted fishing activities will jeopardize the continued existence of these whales.

The Atlantic Large Whale Take Reduction Team; which consists of fishing industry representatives, environmentalists, state and federal officials, and other interested parties; helped develop the Plan. Information about the process and the team is available on the Plan website: www.greateratlantic.fisheries.noaa.gov/whaletrp.

The Plan evolves and changes as NMFS and the team learn more about whale entanglements and how fishing practices might be modified to reduce the risk of entanglement. The first Plan went into effect in 1997. The regulations contained in that rule have been updated several times, with the most recent updates occurring in the spring of 2015.

The current Plan includes restrictions on where and how gear can be set, including closures and gear modifications such as use of sinking groundline and weak links, trap minimums, and gear markings. Other components of the Plan include research on whale populations, whale behavior, and fishing gear interactions; outreach to inform and collaborate with fishermen; and a disentanglement program.

This document is a summary of the Plan's commercial **Northeast gillnet fishing regulations**.

Note: This guide includes Federal requirements only for state and Federal waters; contact your state fishery office for any additional requirements within state waters. Should any regulations overlap with the Plan regulations, the more restrictive regulations apply.

2014-2015 Northeast Gillnet Plan Updates

In 2014 and 2015, the Plan was modified to include the following new requirements and definitions. Modifications for Mid-Atlantic and Southeast fisheries can be found in the corresponding guides.

Gear Marking Changes

NEW Gear Marking Areas (Trap/Pot & Gillnet)

Two new gear marking areas have been added for trap/pot and gillnet fisheries in the Northeast: Jeffreys Ledge and Jordan Basin. For more information, see pages 20 & 21 in this guide.

Gear Marking Size & Color

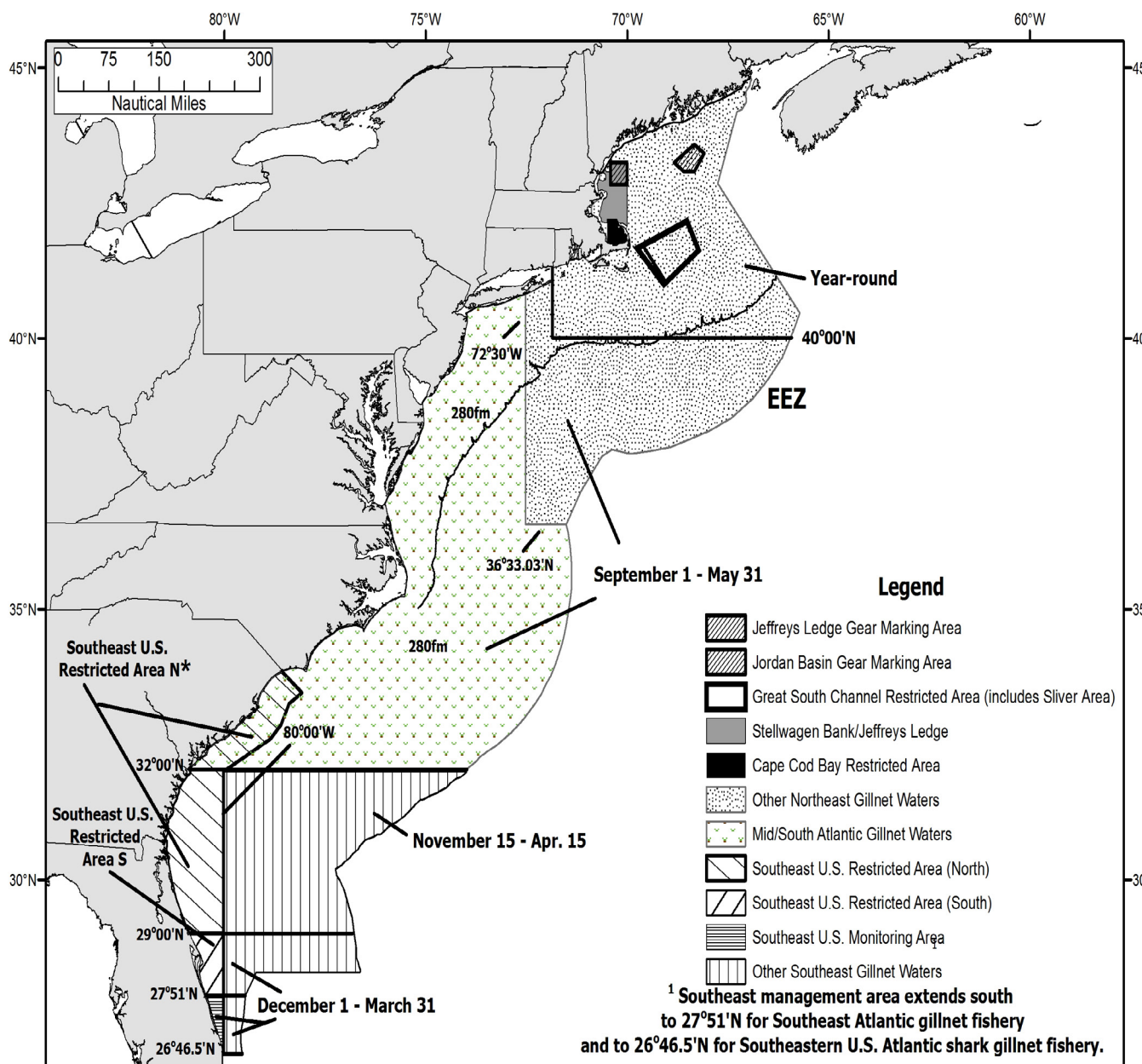
Gear marking colors remain the same and are defined under each individual management area, however the frequency and size of the markings have changed. Now all buoy lines must be marked with three 12 inch (30.48 cm), colored marks: one at the top of the buoy line, one midway along the buoy line, and one at the bottom of the buoy line. If the mark consists of two colors then each color mark may be 6-inch for a total mark of 12-inches.

Gear marking schemes were also modified for two new areas for gillnets including:

GILLNET AREA	OLD GEAR MARKING COLOR	NEW GEAR MARKING COLOR(S)
Jordan Basin (all gillnet)	GREEN	GREEN & YELLOW
Jeffreys Ledge (all gillnet)	GREEN	GREEN & BLACK

Gillnet Management Area Summary

Gillnet gear requirements vary by geographic area. The Plan currently recognizes seven gillnet areas: Cape Cod Bay Restricted Area, Great South Channel Restricted Gillnet Area, Great South Channel Sliver Restricted Gillnet Area, Stellwagen Bank/Jeffreys Ledge Restricted Area, Other Northeast Gillnet Waters, Jordan Basin Gear Marking Area, Jeffreys Ledge Gear Marking Area, Mid/South Atlantic Gillnet Waters, Southeast U.S. Restricted Area South, Southeast U.S. Monitoring Area, and Other Southeast Gillnet Waters.



* The area north of 32°00' N lat. is included in the Southeast U.S. Restricted Area from Nov. 15 - April 15, and Mid/South Atlantic Gillnet Waters from Sept. 1 - Nov. 14 and April 16 - May 31.

Northeast Gillnet Requirements

Gillnet Universal Requirements

- No buoy line floating at the surface.
- No wet storage of gear (all gear must be hauled out of the water at least once every 30 days)
- Fishermen are encouraged, but not required, to maintain knot-free buoy lines.
- All groundlines must be made of sinking line.

Gillnet Gear Marking Requirements

- Gillnet surface buoys to be marked to identify the vessel or fishery with one of the following: the owner's motorboat registration number and/or U.S. vessel documentation number; the federal commercial fishing permit number; or whatever positive identification marking is required by the vessel's home-port state.
- When marking is not already required by state or federal regulations, the letters and numbers to mark gear must be at least 1 inch (2.5cm) in height, block letters or Arabic numbers, in a color that contrasts with the color of the buoy.
- Buoy lines are to be marked with **three 12 inch (30.48 cm), colored marks: one at the top of the buoy line, one midway along the buoy line, and one at the bottom of the buoy line.** Color requirements are defined for each individual management area as described in each management area description that follows.
- See page 10 and Supplement C- Gear Marking for more information on gear marking.

Gillnet Weak Link Requirements

- All buoys, floatation devices and/or weights must be attached to the buoy line with a weak link having a certain breaking strength as defined for each management area in the following tables.
- Individual weak links are not required in locations where rope of appropriate breaking strength is used. Additionally, if no up and down line is present, then weak links are not required at that location. Please see Supplement B- Weak Link and Anchoring Techniques for more information.
- Gillnet panel weak links must be chosen from the list of NMFS approved gear, which includes: off the shelf weak links, rope of appropriate breaking strength, hog rings, and other materials or devices approved in writing. Please see Supplement B- Weak Links and Anchoring Techniques for more information.
- The weak link placement must meet one of the two configuration options shown on the following page. The same configuration will be required for all gillnet panels in a string.

Anchored Gillnet Anchoring Requirements

- All gillnets, regardless of number of net panels, will be required to be anchored with the holding power of at least a 22-lb Danforth-style anchor at each end of the net string (must be a burying anchor; no dead weights).

Drift Gillnet Night Fishing & Storage Restrictions

- Fishing with drift gillnet gear at night (i.e., anytime between one-half hour before sunset and one-half hour after sunrise) is prohibited unless the gear is tended (i.e., attached to the vessel).
- All drift gillnet gear must be removed from the water and stowed on board before a vessel returns to port.

Gillnet Panel Configuration Options

Option 1:

For all variations in panel size:

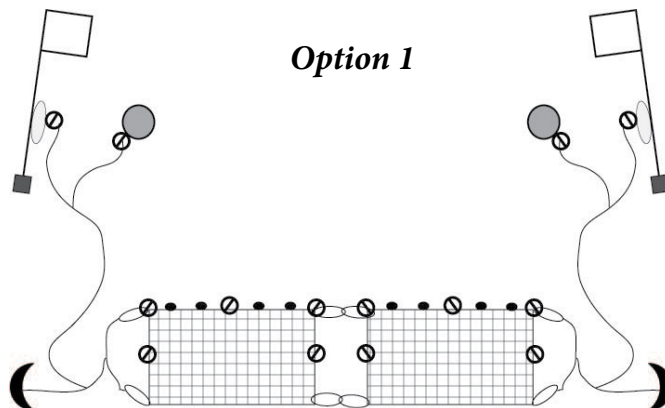
- One weak link must be placed in the center of each of the up and down lines at both ends of the net panel; and
- One weak link must be placed as close as possible to each end of the net panels on the floatline.

For net panels 50 fathoms or less in length:

- One weak link must be placed in the center of the floatline.

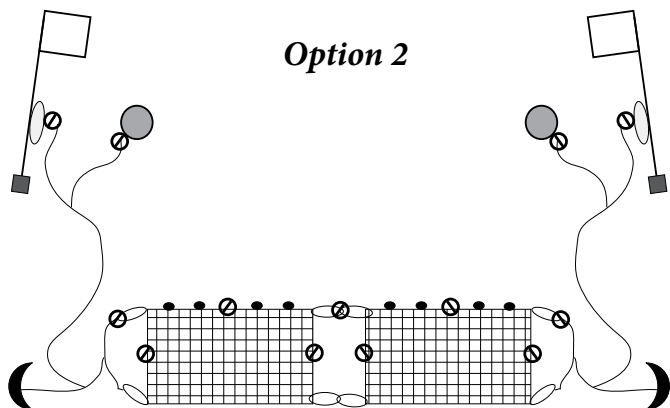
For net panels greater than 50 fathoms:

- One weak link must be placed at least every 25 fathoms along the float line.



Option 1

Option 2



Option 2:

For all variations in panel size:

- One weak link must be placed in the center of each of the up and down lines at both ends of the net panel; and
- One weak link must be placed between floatline tie-loops between net panels; and
- One weak link must be placed where the floatline tie-loops attach to the bridle, buoy line, or groundline at each end of a net string.

For net panels 50 fathoms or less in length:

- One weak link must be placed in the center of the floatline.

For net panels greater than 50 fathoms:

- One weak link must be placed at least every 25 fathoms along the floatline.

NOTE: Individual weak links are not required in locations where rope of appropriate breaking strength is used. Additionally, if no up and down line is present, then weak links are not required at that location. This graphic depicts a general anchored gillnet gear configuration, which may vary. Also, only the buoy line, groundline, anchor, and weak link configuration are displayed here; please see individual management areas for information regarding gear marking and other requirements.

Gillnet Gear Marking



Surface Buoy Marking:

Markings on gillnet surface buoys need to identify the associated vessel or fishery with one of the following:

- The owner's motorboat registration number and/or U.S. vessel documentation number;
- The federal commercial fishing permit number; or
- Whatever positive identification marking is required by the vessel's home-port state.

When marking is not already required by state or federal regulations, the letters and numbers to mark gear must be at least 1 inch (2.5 cm) in height, block letters or Arabic numbers, in a color that contrasts with the color of the buoy.

Buoy Line Marking:

All buoy lines must be marked with three 12 inch (30.48 cm), colored

marks: one at the top of the buoy line, one midway along the buoy line, and one at the bottom of the buoy line.

If the mark consists of two colors, EACH COLOR mark may be 6-inches for a **TOTAL MARK** of 12-inches.

Each color code must be permanently affixed on or along the line and each color code must be clearly visible when the gear is hauled or removed from the water.



Gear Marking Color	Applicable Gillnet Management Area
GREEN & BLACK	<ul style="list-style-type: none"> • Jeffreys Ledge (Gillnet)
GREEN & YELLOW	<ul style="list-style-type: none"> • Jordan Basin (Gillnet)
GREEN	<ul style="list-style-type: none"> • Cape Cod Bay Restricted Area • Great South Channel Restricted Gillnet Area • Great South Channel Sliver Restricted Gillnet Area • Stellwagen Bank/Jeffreys Ledge Restricted Area • Other Northeast Gillnet Waters (Northeast & Mid-Atlantic)
BLUE	<ul style="list-style-type: none"> • Mid/South Atlantic Gillnet Waters
YELLOW	<p><u>Excluding Shark Gillnet:</u></p> <ul style="list-style-type: none"> • Southeast US Restricted Area South* • Other Southeast Gillnet Waters*
GREEN & BLUE	<p><u>Shark Gillnet (with webbing of 5" or greater)</u></p> <ul style="list-style-type: none"> • Southeast US Monitoring Area* • Southeast US Restricted Area South* • Other Southeast Gillnet Waters*

Additional information on gear marking techniques can be found in Supplement C- Gear Marking

Northeast Gillnet Management Areas

- **Cape Cod Bay Restricted Area 12**
- **Stellwagen Bank/Jeffreys Ledge Restricted Area 14**
- **Great South Channel Restricted Gillnet Area 16**
- **Other Northeast Gillnet Waters (Northeast) 18**
- **Jeffreys Ledge Gear Marking Area 20**
- **Jordan Basin Gear Marking Area 21**

Northeast Gillnet Management Areas

Cape Cod Bay Restricted Area

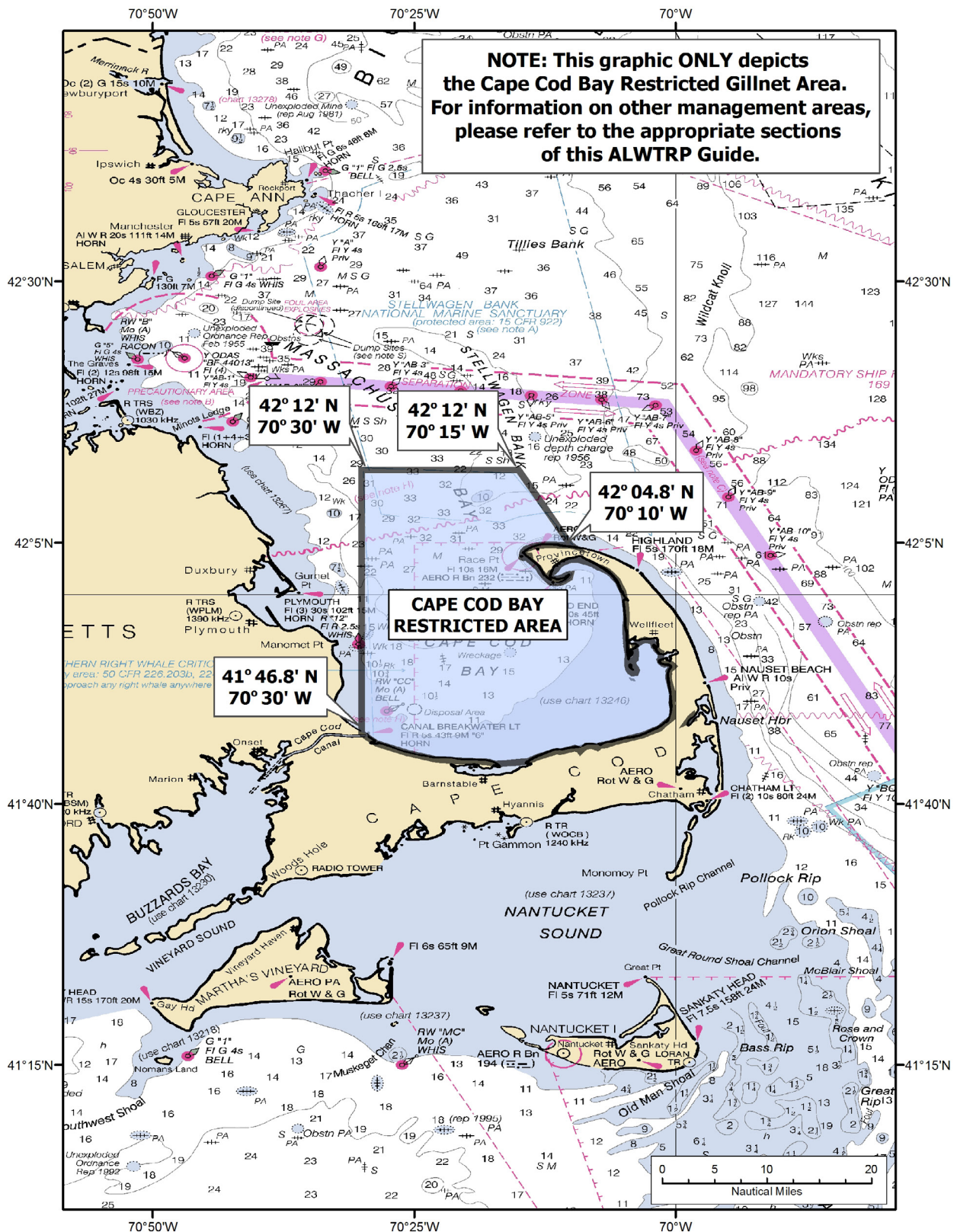
MANAGEMENT AREA DESCRIPTION

The Cape Cod Bay Restricted Area includes the area bounded by: 42°04.8'N / 70°10'W; 42°12'N / 70°15'W; 42°12'N / 70°30'W; 41°46.8'N / 70°30'W; and on the south and east by the interior shoreline of Cape Cod, MA.

DATES	GILLNET TYPE	RESTRICTIONS/REQUIREMENTS SUMMARY
Jan. 1- May 15	• ALL	• CLOSED to ALL gillnet fishing
May 16- Dec. 31	• Anchored	<ul style="list-style-type: none"> • Universal requirements • Weak links- breaking strength of no greater than 1,100 lb. • Anchoring requirements • Sinking groundlines • Gear marking- GREEN
	• Drift	<ul style="list-style-type: none"> • Gear marking- GREEN • Night fishing & storage restrictions

Northeast Gillnet Management Areas

Cape Cod Bay Restricted Area



Northeast Gillnet Management Areas

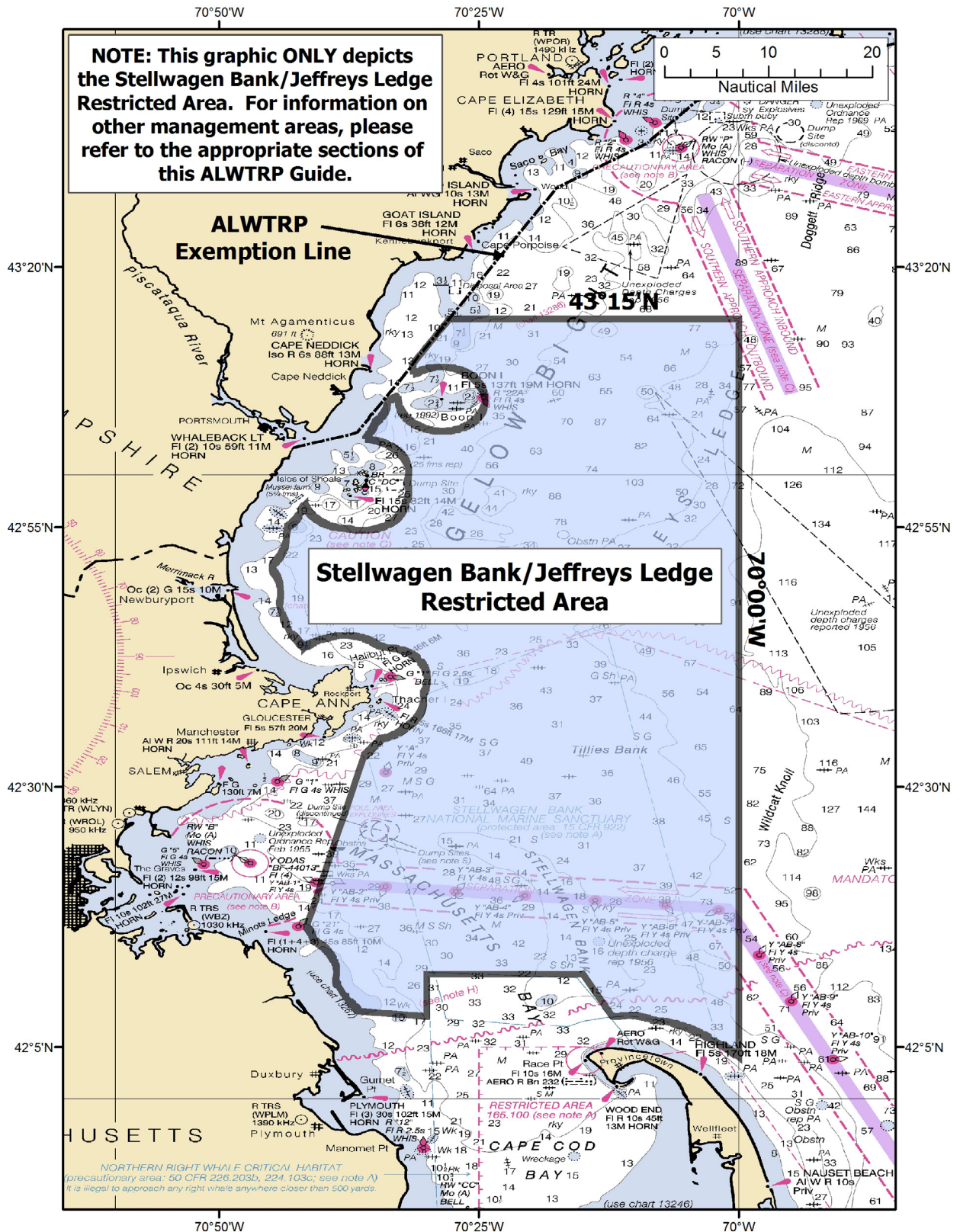
Stellwagen Bank/Jeffreys Ledge Restricted Area

LOCATION DESCRIPTION

The Stellwagen Bank/Jeffreys Ledge Restricted Area includes all federal waters of the Gulf of Maine (except those designated as the Cape Cod Bay Restricted Area) that lie south of 43°15'N and west of 70°00'W.

DATES	GILLNET TYPE	RESTRICTIONS/REQUIREMENTS SUMMARY
Year-round	<ul style="list-style-type: none"> Anchored 	<ul style="list-style-type: none"> Universal requirements Weak links- breaking strength of no greater than 1,100 lb. Anchoring requirements Sinking groundlines Gear marking- GREEN
	<ul style="list-style-type: none"> Drift 	<ul style="list-style-type: none"> Gear marking- GREEN Night fishing & storage restrictions

Northeast Gillnet Management Areas Stellwagen Bank/Jeffreys Ledge Restricted Area



Northeast Gillnet Management Areas

Great South Channel Restricted Area (Including the Sliver Area)

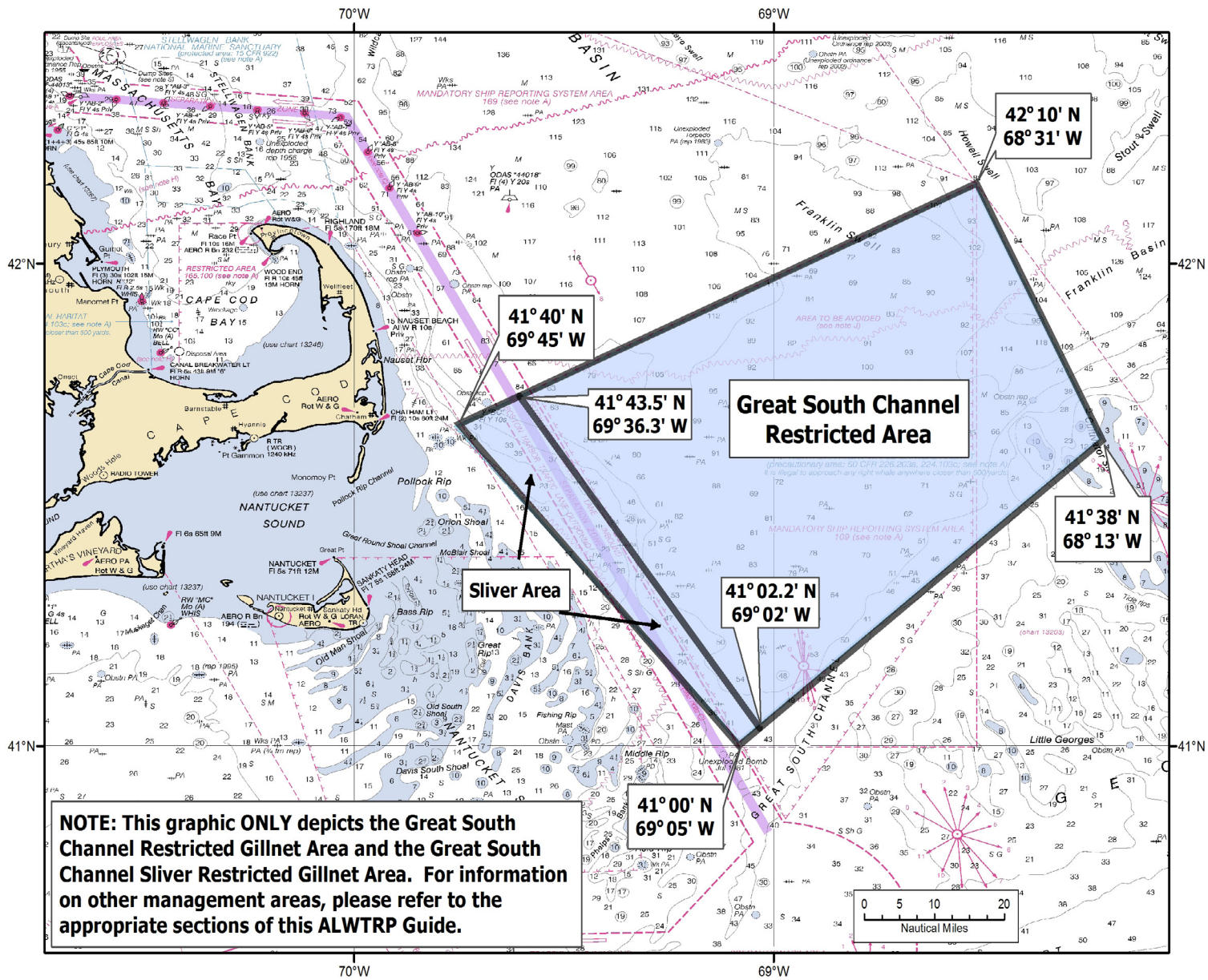
LOCATION DESCRIPTION

The Great South Channel Restricted Gillnet Area includes the area bounded by: 41°40'N/ 69°45'W; 41°00'N / 69°05'W; 41°38'N / 68°13'W; and 42°10'N / 68°31'W. The Great South Channel Sliver Restricted Gillnet Area includes the area bounded by: 41°02.2'N/ 69°02'W; 41°43.5'N/ 69°36.3'W; 41°40'N/ 69°45'W; and 41°00'N/ 69°05'W.

DATES	GILLNET TYPE	RESTRICTIONS/REQUIREMENTS SUMMARY
GREAT SOUTH CHANNEL RESTRICTED GILLNET AREA		
April 1- June 30	<ul style="list-style-type: none"> • ALL 	<ul style="list-style-type: none"> • CLOSED to ALL gillnet fishing. Does not include Sliver Area.
July 1- March 31	<ul style="list-style-type: none"> • Anchored 	<ul style="list-style-type: none"> • Universal requirements • Weak links- breaking strength of no greater than 1,100 lb. • Anchoring requirements • Sinking groundlines • Gear marking- GREEN
	<ul style="list-style-type: none"> • Drift 	<ul style="list-style-type: none"> • Gear marking- GREEN • Night fishing & storage restrictions
GREAT SOUTH CHANNEL SLIVER RESTRICTED GILLNET AREA		
Year-round	<ul style="list-style-type: none"> • Anchored 	<ul style="list-style-type: none"> • Universal requirements • Weak links- breaking strength of no greater than 1,100 lb. • Anchoring requirements • Sinking groundlines • Gear marking- GREEN
	<ul style="list-style-type: none"> • Drift 	<ul style="list-style-type: none"> • Gear marking- GREEN • Night fishing & storage restrictions

Northeast Gillnet Management Areas

Great South Channel Restricted Area (Including the Sliver Area)



Northeast Gillnet Management Areas

Other Northeast Gillnet Waters (North)

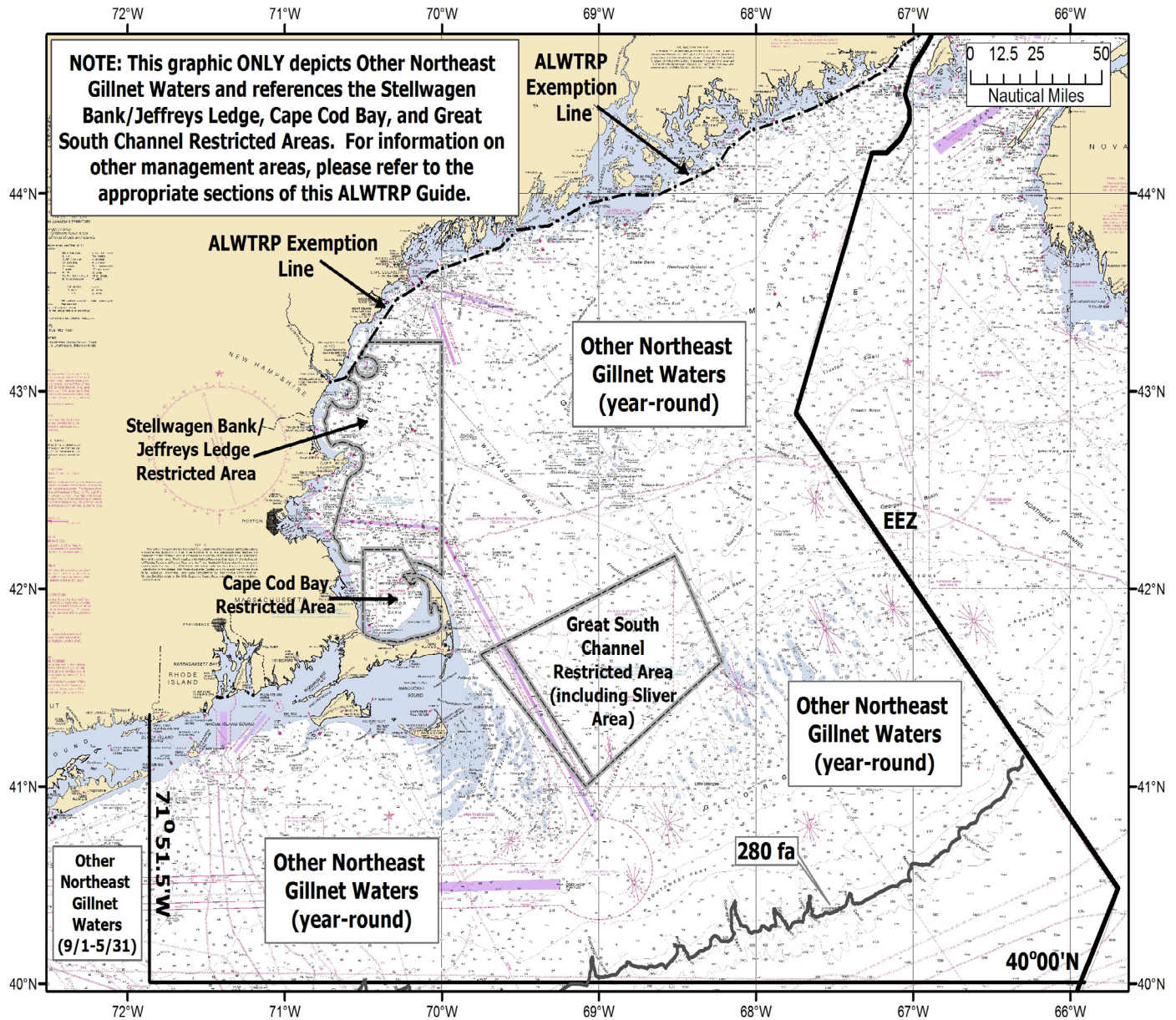
LOCATION DESCRIPTION

Other Northeast Gillnet Waters consists of all U.S. waters from the U.S./Canada border to Long Island, NY, at 72°30' W. long. south to 36°33.03' N. lat., and east to the eastern edge of the EEZ, with the exception of the Cape Cod Bay Restricted Area, Stellwagen Bank/Jeffreys Ledge Restricted Area, Great South Channel Restricted Area and the exempted waters listed in Supplement A- Exempted Areas.

DATES	GILLNET TYPE	RESTRICTIONS/REQUIREMENTS SUMMARY
Year-round	<ul style="list-style-type: none"> Anchored 	<ul style="list-style-type: none"> Universal requirements Weak links- breaking strength of no greater than 1,100 lb. Anchoring requirements Sinking groundlines Gear marking- GREEN
	<ul style="list-style-type: none"> Drift 	<ul style="list-style-type: none"> Gear marking- GREEN Night fishing & storage restrictions

Northeast Gillnet Management Areas

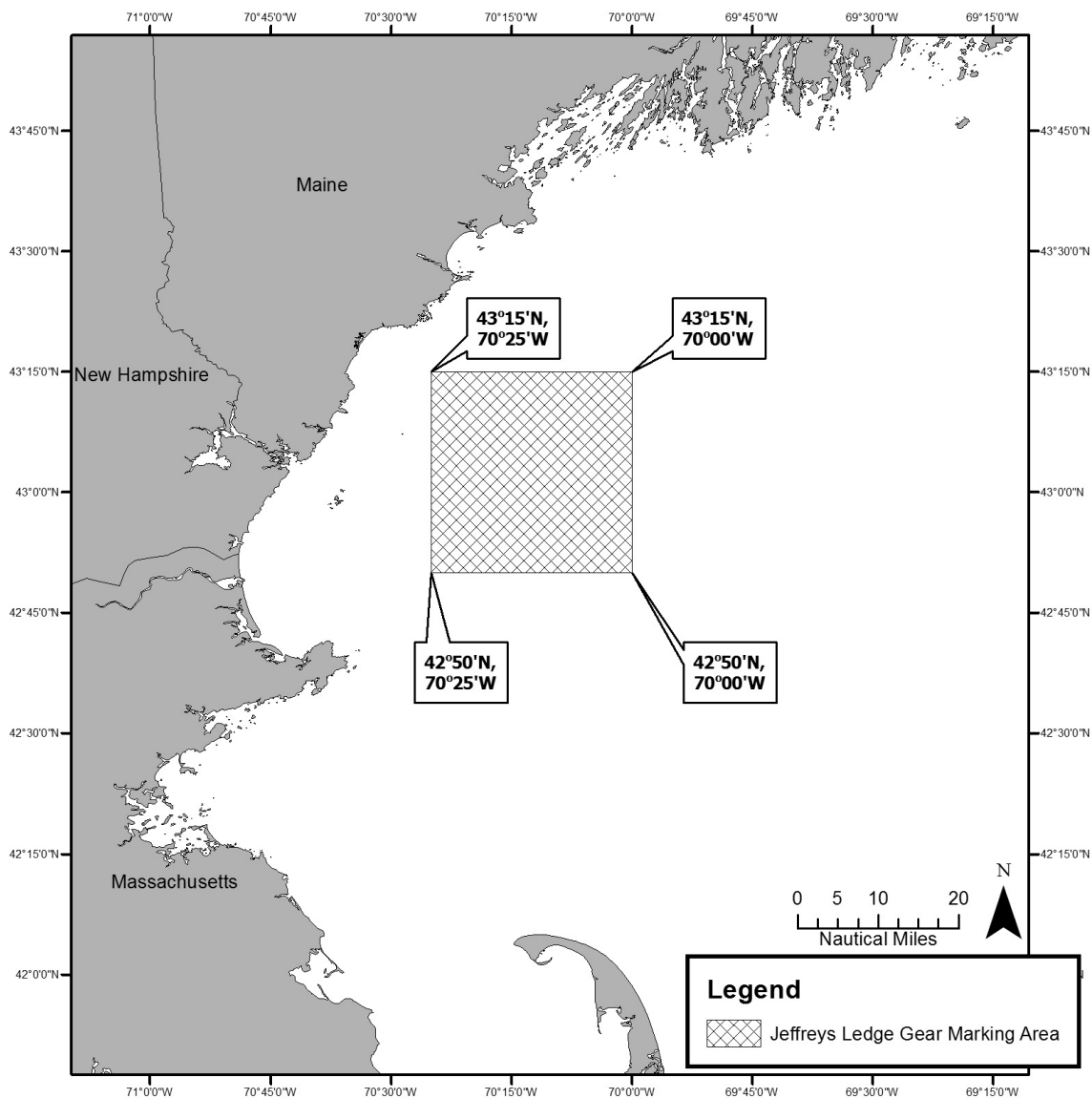
Other Northeast Gillnet Waters (North)



Northeast Gillnet Management Areas

Jeffreys Ledge Gear Marking Area

LOCATION DESCRIPTION		
Jeffreys Ledge management area includes the area bounded by by: 43°15'N/ 70°25'W; 43°15'N/ 70°00'W; 42°50'N/ 70°00'W; and 42°50'N/ 70°00'W.		
DATES	GILLNET TYPE	RESTRICTIONS/REQUIREMENTS SUMMARY
Year-round	<ul style="list-style-type: none"> ALL 	<ul style="list-style-type: none"> Gear marking- GREEN & BLACK



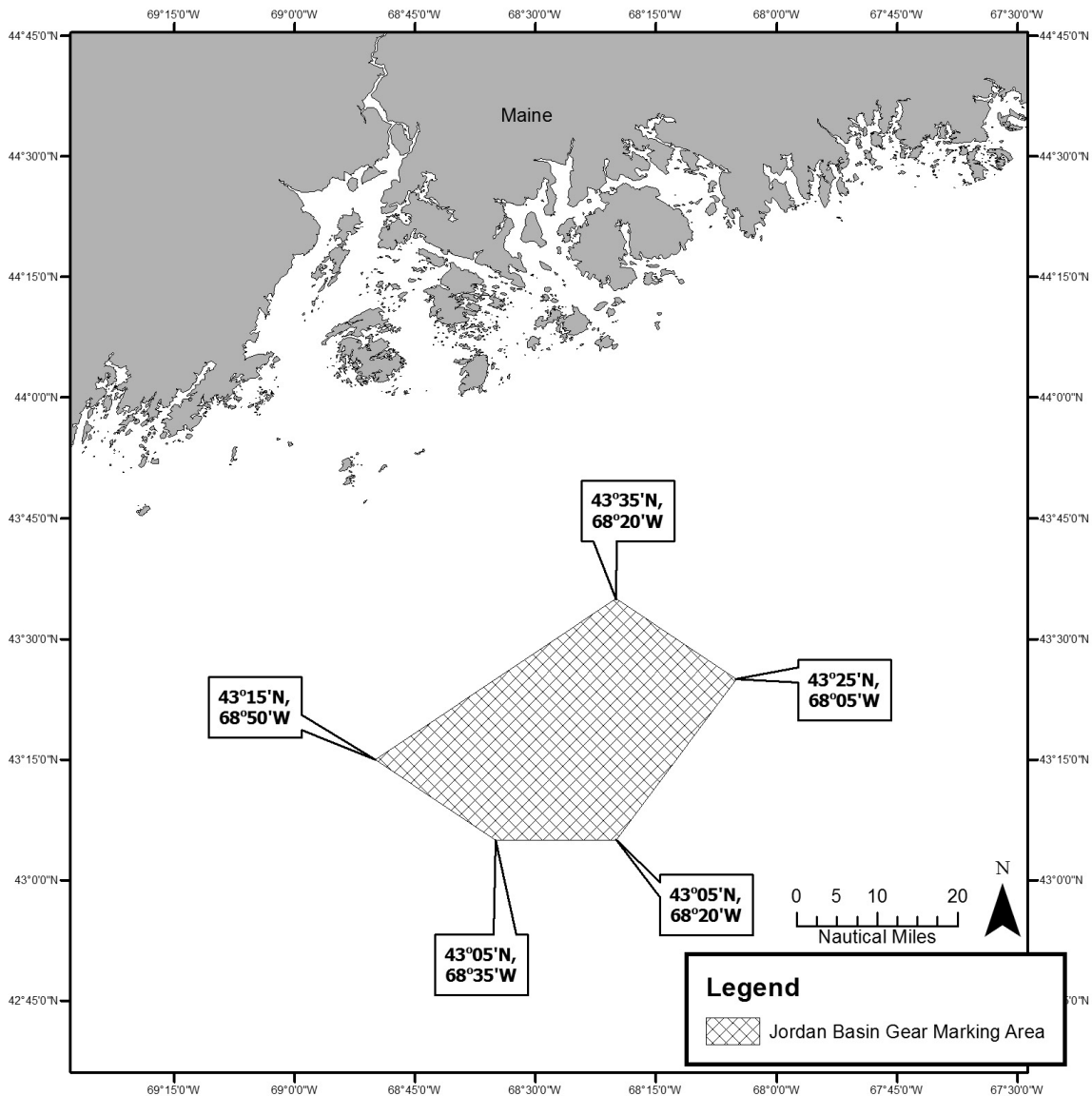
Northeast Gillnet Management Areas

Jordan Basin Gear Marking Area

LOCATION DESCRIPTION

Jordan Basin management area includes the area bounded by by: 43°15'N/ 68°50'W; 43°35'N/ 68°20'W; 43°25'N/ 68°05'W; 43°05'N/ 68°20'W; and 43°05'N/ 68°35'W.

DATES	GILLNET TYPE	RESTRICTIONS/REQUIREMENTS SUMMARY
Year-round	<ul style="list-style-type: none"> ALL 	Gear marking- GREEN & YELLOW



Plan Exempted Areas- Northeast

GEAR MODIFICATION EXEMPTIONS >280 FATHOMS

- Fisheries are exempt from the requirement to have sinking groundlines if their groundline is at a depth equal to or greater than 280 fathoms (1,680 ft; 512.1m).
- Anchored gillnet fisheries are exempt from the requirement to install weak links in net panel(s) and to anchor each end of the net string if the float line is at a depth equal to or greater than 280 fathoms (1,680 ft; 512.1m).

PLAN REGULATIONS DO NOT APPLY TO THE FOLLOWING EXEMPTED NORTHEAST WATERS

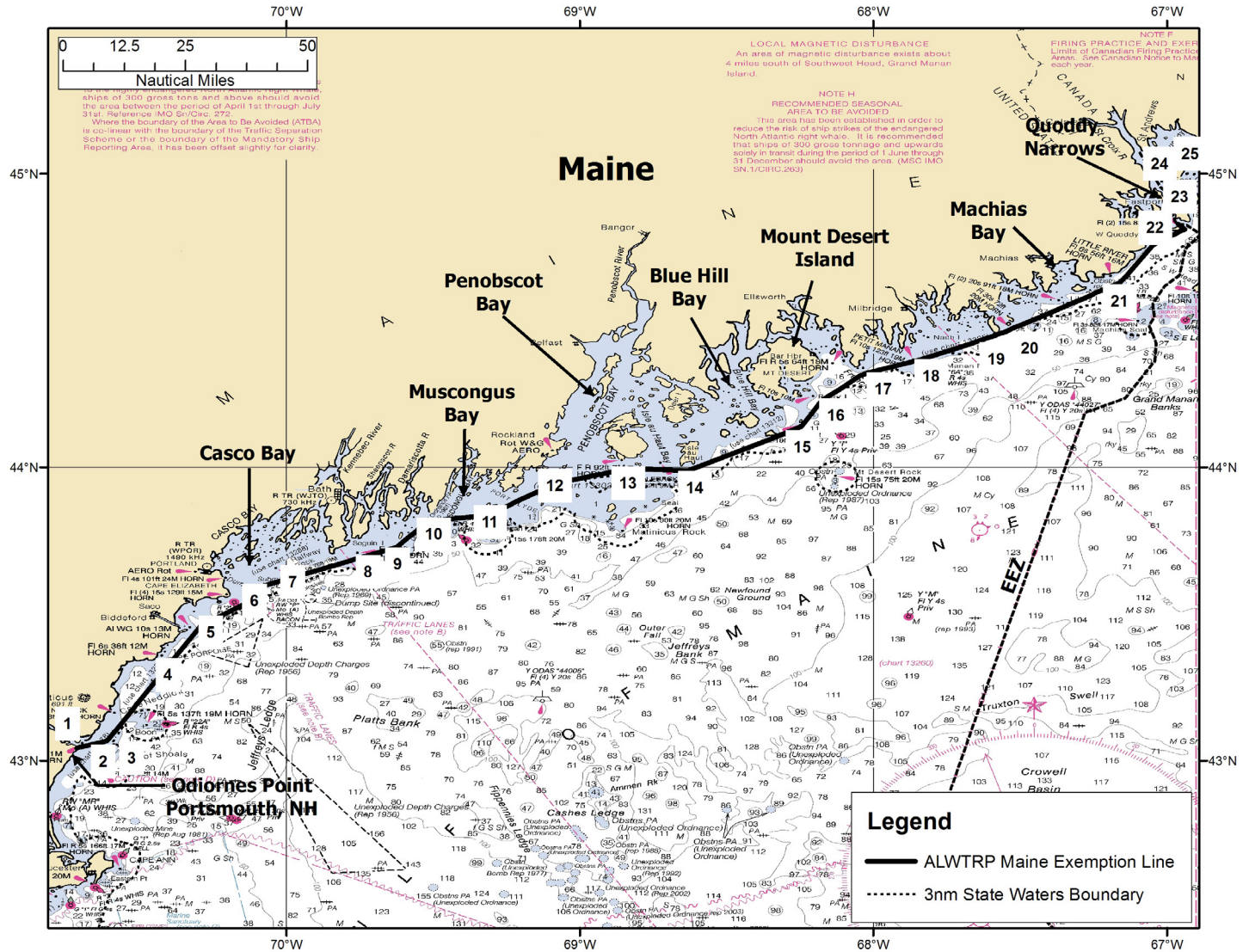
EXEMPTED AREA	BOUNDARIES
COLREGS waters	<p>Waters landward of the 72 COLREGS lines from Maine through Florida are exempt from Plan requirements with certain exceptions.</p> <p>The following Northeast COLREGS areas are NOT EXEMPT from ALWTRP regulations:</p> <ul style="list-style-type: none"> • Casco Bay (Maine), • Portsmouth Harbor (New Hampshire), and • Massachusetts state waters <p><i>See Northeast guides or Supplement A for Northeast exceptions.</i></p>
Exempted waters of Massachusetts include:	<ul style="list-style-type: none"> • Waters landward of the first bridge over any embayment, harbor, or inlet
Exempted waters of New Hampshire include those landward of the following line:: (page 25)	<ul style="list-style-type: none"> • A line from 42°53.691' N. lat., 70°48.516' W. long. to 42°53.516' N. lat., 70°48.748' W. long. (Hampton Harbor). • A line from 42°59.986' N. lat., 70°44.654' W. long. to 42°59.956' N., 70°44.737' W. long. (Rye Harbor).
Exempted waters of Rhode Island include those landward of the following line: (page 26)	<ul style="list-style-type: none"> • A line from 41°22.441' N. lat., 71°30.781' W. long. to 41°22.447' N lat., 71°30.893' W. long. (Pt. Judith Pond Inlet). • A line from 41°21.310' N. lat., 71°38.300' W. long. to 41°21.300' N. lat., 71°38.330' W. long. (Ninigret Pond Inlet). • A line from 41°19.875' N. lat., 71°43.061' W. long. to 41°19.879' N. lat., 71°43.115' W. long. (Quonochontaug Pond Inlet). • A line from 41°19.660' N. lat., 71°45.750' W. long. to 41°19.660' N. lat., 71°45.780' W. long. (Weekapaug Pond Inlet).

Plan Exempted Areas- Northeast

REGULATIONS DO NOT APPLY TO THE FOLLOWING EXEMPTED NORTHEAST WATERS		
EXEMPTED AREA	BOUNDARIES	
Exempted waters of Maine include: (page 24)	Exempted areas are those landward of a line which connects the points below:	
	<table border="0"> <tr> <td style="vertical-align: top;"> <ol style="list-style-type: none"> 1. Odiornes Pt. Portsmouth NH: 43° 02.55' N 70°43.33' W 2. R 2KR Whistle – Kittery Point: 43°02.93' N 70°41.47' W 3. N 2MR – Murray Rock: 43°04.06' N, 70°36.70' W 4. RW CP Whistle – Cape Porpoise: 43°20.23' N 70°23.64' W 5. RW WI Whistle – Wood: 43°27.63' N 70°17.48' W 6. G 1 – East Hue and Cry: 43°31.94' N 70°08.68' W 7. RG N BS – Bulwark Shoal: 43°36.04' N 70°03.98' W 8. R 20ML Bell - Mile Ledge: 43°41.44' N 69°45.27' W 9. R 2BR Bell – Bantam Rock: 43°43.64' N 69°37.58' W 10. GR C PL – Pemaquid Ledge: 43°48.96' N 69°31.15' W 11. R 2 OM Whistle – Old Man Ledge: 43°50.28' N 69°18.86' 44°25.74' N 67° 38.39' W 12. G 5TB Bell – Two Bush Channel: 43°56.72' N 69°04.89' W 13. R 2A Bell – Old Horse Ledge: 43°59.83' N 68°50.06' W </td> <td style="vertical-align: top;"> <ol style="list-style-type: none"> 14. R 2 Bell – Roaring Bull Ledge, Isle Au Haut: 43°59.36' N 68°37.95' W 15. Southern point Great Duck I: 44°08.36' N 68°14.75' W 16. R 8BI Whistle – Baker I: 44°13.55' N 68°10.71' W 17. R 2S Bell – Schoodic I: 44°19.08' N 68° 02.05' W 18. R N 2 – Petit Manan I: 44°21.66' N 67°51.78' W 19. R 2SR Bell – Seahorse Rock, west of Great Wass I Freeman Rock – east of Great Wass I: 44°27.77' N 67°32.86' W 20. Obstruction – southeast of Cutler: 44°37.70' N 67°09.75' W 21. R 28M Whistle – Baileys Mistake: 44°45.51' N 67°02.87' W 22. R N 2 – Morton Ledge: 44°47.36' N 66°59.25' W 23. G 1 Whistle – West Quoddy Head: 44°48.64' N 66°56.43' W 24. R N 2 – Quoddy Narrows: 44°49.67' N 66°57.77' W </td> </tr> </table>	<ol style="list-style-type: none"> 1. Odiornes Pt. Portsmouth NH: 43° 02.55' N 70°43.33' W 2. R 2KR Whistle – Kittery Point: 43°02.93' N 70°41.47' W 3. N 2MR – Murray Rock: 43°04.06' N, 70°36.70' W 4. RW CP Whistle – Cape Porpoise: 43°20.23' N 70°23.64' W 5. RW WI Whistle – Wood: 43°27.63' N 70°17.48' W 6. G 1 – East Hue and Cry: 43°31.94' N 70°08.68' W 7. RG N BS – Bulwark Shoal: 43°36.04' N 70°03.98' W 8. R 20ML Bell - Mile Ledge: 43°41.44' N 69°45.27' W 9. R 2BR Bell – Bantam Rock: 43°43.64' N 69°37.58' W 10. GR C PL – Pemaquid Ledge: 43°48.96' N 69°31.15' W 11. R 2 OM Whistle – Old Man Ledge: 43°50.28' N 69°18.86' 44°25.74' N 67° 38.39' W 12. G 5TB Bell – Two Bush Channel: 43°56.72' N 69°04.89' W 13. R 2A Bell – Old Horse Ledge: 43°59.83' N 68°50.06' W
<ol style="list-style-type: none"> 1. Odiornes Pt. Portsmouth NH: 43° 02.55' N 70°43.33' W 2. R 2KR Whistle – Kittery Point: 43°02.93' N 70°41.47' W 3. N 2MR – Murray Rock: 43°04.06' N, 70°36.70' W 4. RW CP Whistle – Cape Porpoise: 43°20.23' N 70°23.64' W 5. RW WI Whistle – Wood: 43°27.63' N 70°17.48' W 6. G 1 – East Hue and Cry: 43°31.94' N 70°08.68' W 7. RG N BS – Bulwark Shoal: 43°36.04' N 70°03.98' W 8. R 20ML Bell - Mile Ledge: 43°41.44' N 69°45.27' W 9. R 2BR Bell – Bantam Rock: 43°43.64' N 69°37.58' W 10. GR C PL – Pemaquid Ledge: 43°48.96' N 69°31.15' W 11. R 2 OM Whistle – Old Man Ledge: 43°50.28' N 69°18.86' 44°25.74' N 67° 38.39' W 12. G 5TB Bell – Two Bush Channel: 43°56.72' N 69°04.89' W 13. R 2A Bell – Old Horse Ledge: 43°59.83' N 68°50.06' W 	<ol style="list-style-type: none"> 14. R 2 Bell – Roaring Bull Ledge, Isle Au Haut: 43°59.36' N 68°37.95' W 15. Southern point Great Duck I: 44°08.36' N 68°14.75' W 16. R 8BI Whistle – Baker I: 44°13.55' N 68°10.71' W 17. R 2S Bell – Schoodic I: 44°19.08' N 68° 02.05' W 18. R N 2 – Petit Manan I: 44°21.66' N 67°51.78' W 19. R 2SR Bell – Seahorse Rock, west of Great Wass I Freeman Rock – east of Great Wass I: 44°27.77' N 67°32.86' W 20. Obstruction – southeast of Cutler: 44°37.70' N 67°09.75' W 21. R 28M Whistle – Baileys Mistake: 44°45.51' N 67°02.87' W 22. R N 2 – Morton Ledge: 44°47.36' N 66°59.25' W 23. G 1 Whistle – West Quoddy Head: 44°48.64' N 66°56.43' W 24. R N 2 – Quoddy Narrows: 44°49.67' N 66°57.77' W 	

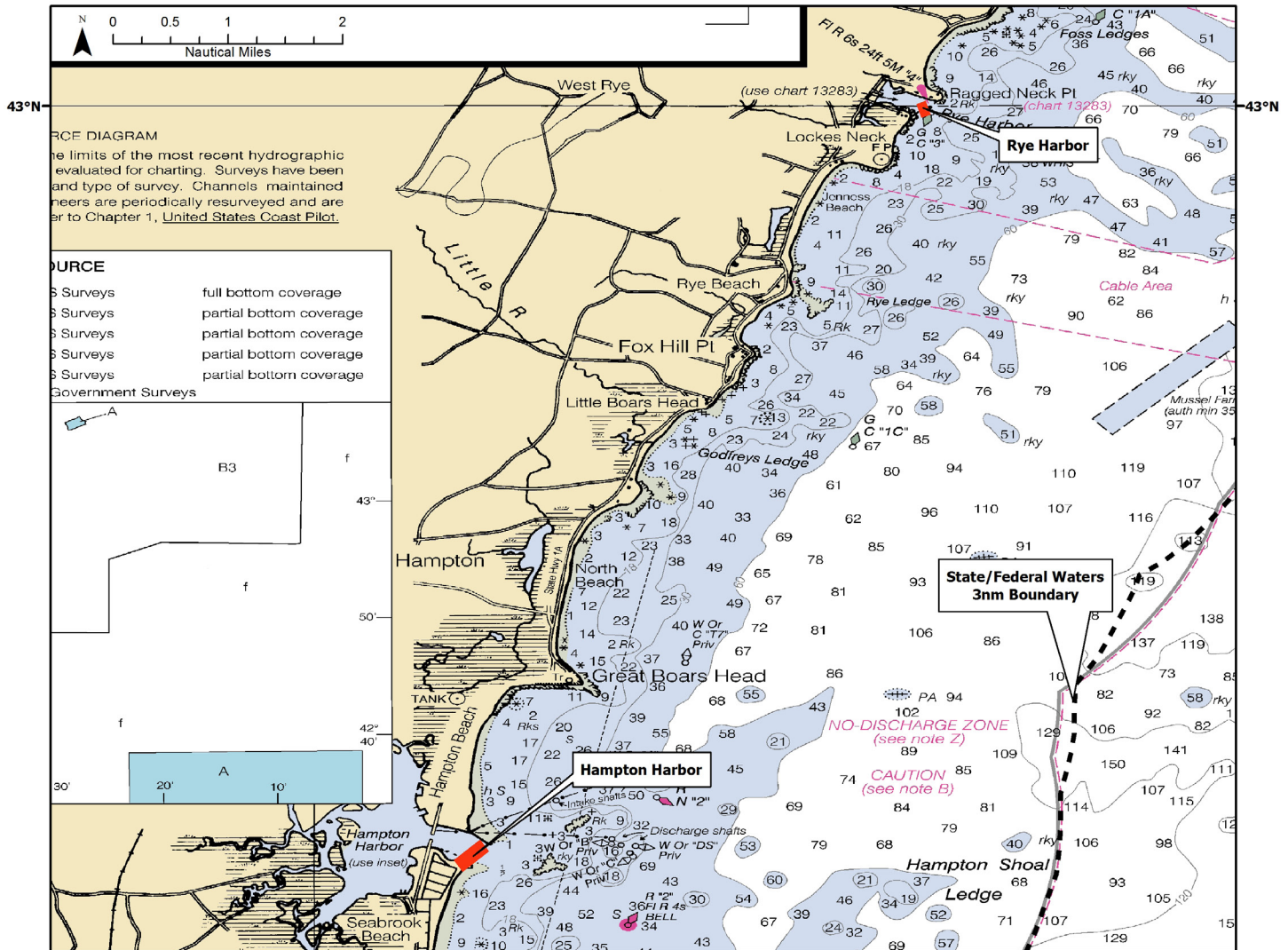
Plan Exempted Areas- Northeast

MAINE



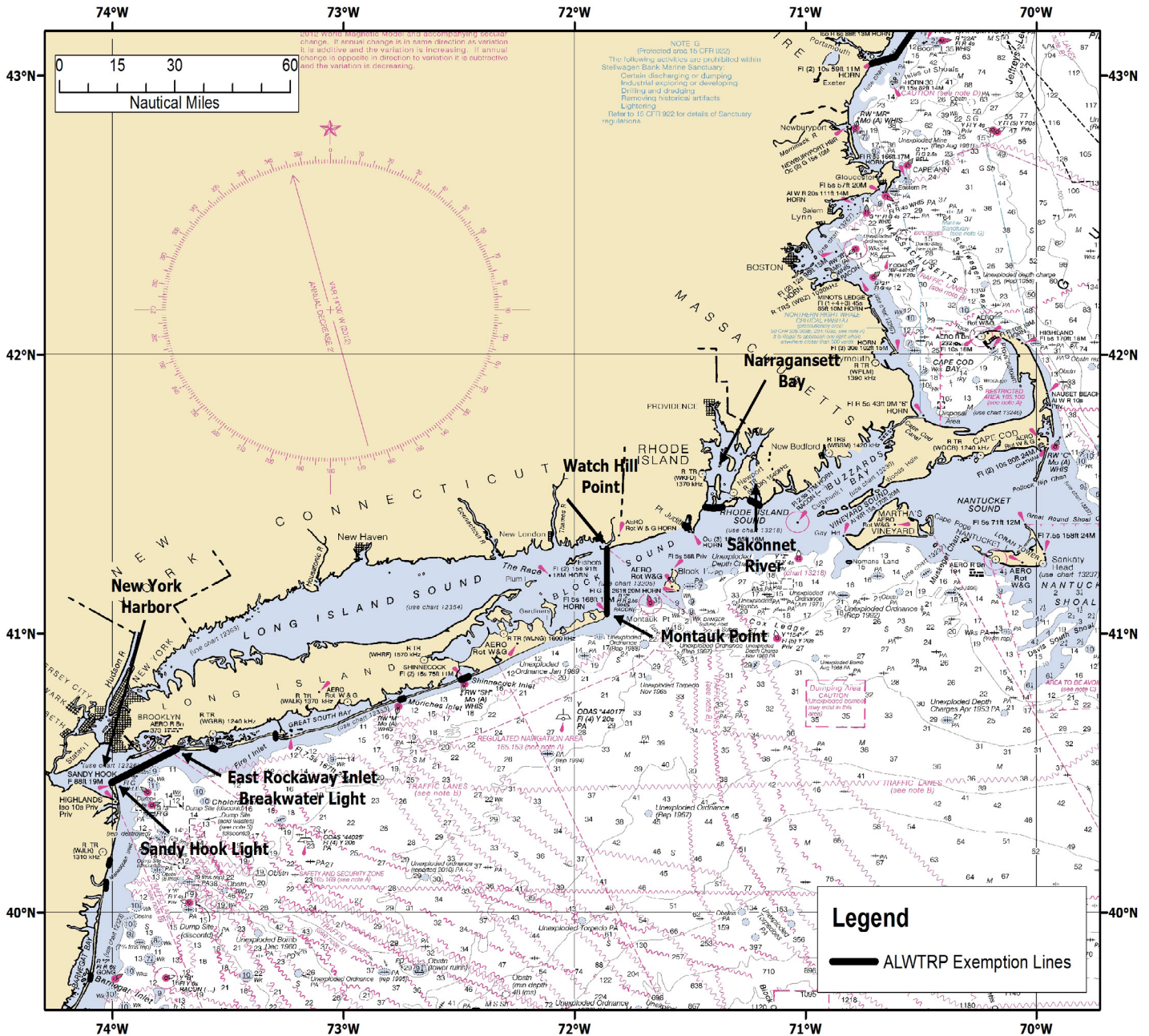
Plan Exempted Areas- Northeast

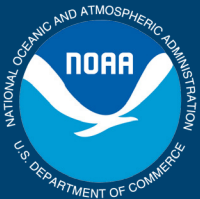
NEW HAMPSHIRE



Plan Exempted Areas- Northeast

RHODE ISLAND





**NOAA
FISHERIES**

May 2015

www.greateratlantic.fisheries.noaa.gov

OFFICIAL BUSINESS

**National Marine Fisheries Service
Greater Atlantic Regional Fisheries Office
55 Great Republic Drive
Gloucester, MA 01930**