

Atlantic Large Whale Take Reduction Plan

Exempted Waters

Atlantic Large Whale Take Reduction Plan (Plan) regulations apply to all U.S. waters in the Atlantic, with the exceptions of the following areas described in the following sections.

Gear Modification Exemptions >280 fathoms:

- Fisheries are exempt from the requirement to have sinking groundlines if their groundline is at a depth equal to or greater than 280 fathoms (1,680 ft; 512.1m).
- Anchored gillnet fisheries are exempt from the requirement to install weak links in net panel(s) and to anchor each end of the net string if the float line is at a depth equal to or greater than 280 fathoms (1,680 ft; 512.1m).

Minimum Trap Per Trawl Exemptions

- **Rhode Island state waters, New Hampshire state waters, and and portions of Massachusetts state waters** are exempt from the minimum trap per trawl requirements but must adhere to other Plan requirements. Single traps, in some areas, must comply with additional gear marking regulations.
- **Waters within 1/4 mile of Monhegan Island, Maine; Matinicus Island group, Maine; and Ragged Island, Maine and Isle of Shoals group, Maine** are exempt from the new minimum trap per trawl requirements but must adhere to other Plan requirements. Single traps, in some areas, must comply with additional gear marking regulations.

For more detailed information, see information starting on page 8.

These areas are required to meet other Plan regulations.



Full Plan Exemptions

Plan Regulations Do Not Apply To The Following Exempted Waters

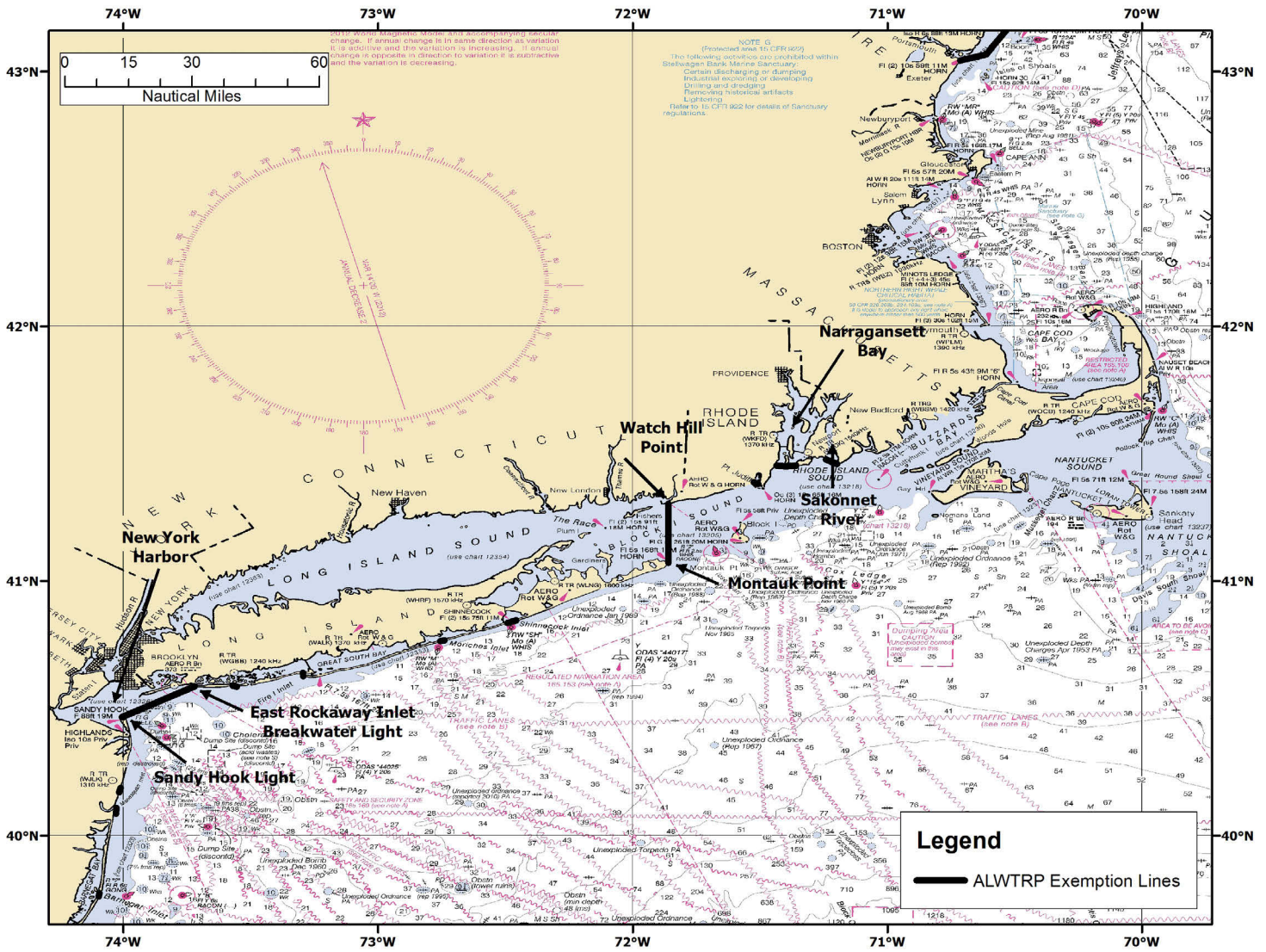
Exempted Area	Boundaries
<p>COLREGS waters, Maine through Florida, with the following <u>exceptions</u>:</p>	<p>Waters landward of the 72 COLREGS lines from Maine through Florida are exempt from Plan requirements with certain exceptions. The following COLREGS areas are NOT EXEMPT from ALWTRP regulations:</p> <ul style="list-style-type: none"> • Casco Bay (Maine), • Portsmouth Harbor (New Hampshire), • Gardiners Bay and Long Island Sound (New York), and • Massachusetts state waters
<p>Exempted waters of Massachusetts include:</p>	<ul style="list-style-type: none"> • Waters landward of the first bridge over any embayment, harbor, or inlet
<p>Exempted waters of New Hampshire include those landward of the following line:</p>	<ul style="list-style-type: none"> • A line from 42°53.691' N. lat., 70°48.516' W. long. to 42°53.516' N. lat., 70°48.748' W. long. (Hampton Harbor). • A line from 42°59.986' N. lat., 70°44.654' W. long. to 42°59.956' N., 70°44.737' W. long. (Rye Harbor).
<p>Exempted waters of Rhode Island include those landward of the following line:</p>	<ul style="list-style-type: none"> • A line from 41°22.441' N. lat., 71°30.781' W. long. to 41°22.447' N lat., 71°30.893' W. long. (Pt. Judith Pond Inlet). • A line from 41°21.310' N. lat., 71°38.300' W. long. to 41°21.300' N. lat., 71°38.330' W. long. (Ninigret Pond Inlet). • A line from 41°19.875' N. lat., 71°43.061' W. long. to 41°19.879' N. lat., 71°43.115' W. long. (Quonochontaug Pond Inlet). • A line from 41°19.660' N. lat., 71°45.750' W. long. to 41°19.660' N. lat., 71°45.780' W. long. (Weekapaug Pond Inlet).
<p>Exempted waters of New York include those landward of the following line:</p>	<ul style="list-style-type: none"> • A line that follows the territorial sea baseline through Block Island Sound (Watch Hill Point, RI, to Montauk Point, NY).
<p>Exempted waters of South Carolina include those landward of the following line:</p>	<ul style="list-style-type: none"> • A line from 32°34.717' N. lat., 80°08.565' W. long. to 32°34.686' N. lat., 80°08.642' W. long. (Captain Sams Inlet).

Full Plan Exemptions

Regulations Do Not Apply To The Following Exempted Waters		
Exempted Area	Boundaries	
Exempted waters of Maine include:	Exempted areas are those landward of a line which connects the points below:	
	<table border="0"> <tr> <td style="vertical-align: top;"> <ol style="list-style-type: none"> 1. Odiornes Pt. Portsmouth NH: 43° 02.55' N 70°43.33' W 2. R 2KR Whistle – Kittery Point: 43°02.93' N 70°41.47' W 3. N 2MR – Murray Rock: 43°04.06' N, 70°36.70' W 4. RW CP Whistle – Cape Porpoise: 43°20.23' N 70°23.64' W 5. RW WI Whistle – Wood: 43°27.63' N 70°17.48' W 6. G 1 – East Hue and Cry: 43°31.94' N 70°08.68' W 7. RG N BS – Bulwark Shoal: 43°36.04' N 70°03.98' W 8. R 20ML Bell - Mile Ledge: 43°41.44' N 69°45.27' W 9. R 2BR Bell – Bantam Rock: 43°43.64' N 69°37.58' W 10. GR C PL – Pemaquid Ledge: 43°48.96' N 69°31.15' W 11. R 2 OM Whistle – Old Man Ledge: 43°50.28' N 69°18.86' 44°25.74' N 67° 38.39' W 12. G 5TB Bell – Two Bush Channel: 43°56.72' N 69°04.89' W 13. R 2A Bell – Old Horse Ledge: 43°59.83' N 68°50.06' W </td> <td style="vertical-align: top;"> <ol style="list-style-type: none"> 14. R 2 Bell – Roaring Bull Ledge, Isle Au Haut: 43°59.36' N 68°37.95' W 15. Southern point Great Duck I: 44°08.36' N 68°14.75' W 16. R 8BI Whistle – Baker I: 44°13.55' N 68°10.71' W 17. R 2S Bell – Schoodic I: 44°19.08' N 68° 02.05' W 18. R N 2 – Petit Manan I: 44°21.66' N 67°51.78' W 19. R 2SR Bell – Seahorse Rock, west of Great Wass I Freeman Rock – east of Great Wass I: 44°27.77' N 67°32.86' W 20. Obstruction – southeast of Cutler: 44°37.70' N 67°09.75' W 21. R 28M Whistle – Baileys Mistake: 44°45.51' N 67°02.87' W 22. R N 2 – Morton Ledge: 44°47.36' N 66°59.25' W 23. G 1 Whistle – West Quoddy Head: 44°48.64' N 66°56.43' W 24. R N 2 – Quoddy Narrows: 44°49.67' N 66°57.77' W </td> </tr> </table>	<ol style="list-style-type: none"> 1. Odiornes Pt. Portsmouth NH: 43° 02.55' N 70°43.33' W 2. R 2KR Whistle – Kittery Point: 43°02.93' N 70°41.47' W 3. N 2MR – Murray Rock: 43°04.06' N, 70°36.70' W 4. RW CP Whistle – Cape Porpoise: 43°20.23' N 70°23.64' W 5. RW WI Whistle – Wood: 43°27.63' N 70°17.48' W 6. G 1 – East Hue and Cry: 43°31.94' N 70°08.68' W 7. RG N BS – Bulwark Shoal: 43°36.04' N 70°03.98' W 8. R 20ML Bell - Mile Ledge: 43°41.44' N 69°45.27' W 9. R 2BR Bell – Bantam Rock: 43°43.64' N 69°37.58' W 10. GR C PL – Pemaquid Ledge: 43°48.96' N 69°31.15' W 11. R 2 OM Whistle – Old Man Ledge: 43°50.28' N 69°18.86' 44°25.74' N 67° 38.39' W 12. G 5TB Bell – Two Bush Channel: 43°56.72' N 69°04.89' W 13. R 2A Bell – Old Horse Ledge: 43°59.83' N 68°50.06' W
<ol style="list-style-type: none"> 1. Odiornes Pt. Portsmouth NH: 43° 02.55' N 70°43.33' W 2. R 2KR Whistle – Kittery Point: 43°02.93' N 70°41.47' W 3. N 2MR – Murray Rock: 43°04.06' N, 70°36.70' W 4. RW CP Whistle – Cape Porpoise: 43°20.23' N 70°23.64' W 5. RW WI Whistle – Wood: 43°27.63' N 70°17.48' W 6. G 1 – East Hue and Cry: 43°31.94' N 70°08.68' W 7. RG N BS – Bulwark Shoal: 43°36.04' N 70°03.98' W 8. R 20ML Bell - Mile Ledge: 43°41.44' N 69°45.27' W 9. R 2BR Bell – Bantam Rock: 43°43.64' N 69°37.58' W 10. GR C PL – Pemaquid Ledge: 43°48.96' N 69°31.15' W 11. R 2 OM Whistle – Old Man Ledge: 43°50.28' N 69°18.86' 44°25.74' N 67° 38.39' W 12. G 5TB Bell – Two Bush Channel: 43°56.72' N 69°04.89' W 13. R 2A Bell – Old Horse Ledge: 43°59.83' N 68°50.06' W 	<ol style="list-style-type: none"> 14. R 2 Bell – Roaring Bull Ledge, Isle Au Haut: 43°59.36' N 68°37.95' W 15. Southern point Great Duck I: 44°08.36' N 68°14.75' W 16. R 8BI Whistle – Baker I: 44°13.55' N 68°10.71' W 17. R 2S Bell – Schoodic I: 44°19.08' N 68° 02.05' W 18. R N 2 – Petit Manan I: 44°21.66' N 67°51.78' W 19. R 2SR Bell – Seahorse Rock, west of Great Wass I Freeman Rock – east of Great Wass I: 44°27.77' N 67°32.86' W 20. Obstruction – southeast of Cutler: 44°37.70' N 67°09.75' W 21. R 28M Whistle – Baileys Mistake: 44°45.51' N 67°02.87' W 22. R N 2 – Morton Ledge: 44°47.36' N 66°59.25' W 23. G 1 Whistle – West Quoddy Head: 44°48.64' N 66°56.43' W 24. R N 2 – Quoddy Narrows: 44°49.67' N 66°57.77' W 	
Exempted waters of Maryland/ Virginia: Chesapeake Bay	<ul style="list-style-type: none"> • Waters landward of a line drawn from Cape Charles Light to Cape Henry Light. 	
Exempted waters of Delaware: Delaware Bay	<ul style="list-style-type: none"> • Waters landward of a line drawn from Cape May Light to Cape Henlopen. 	

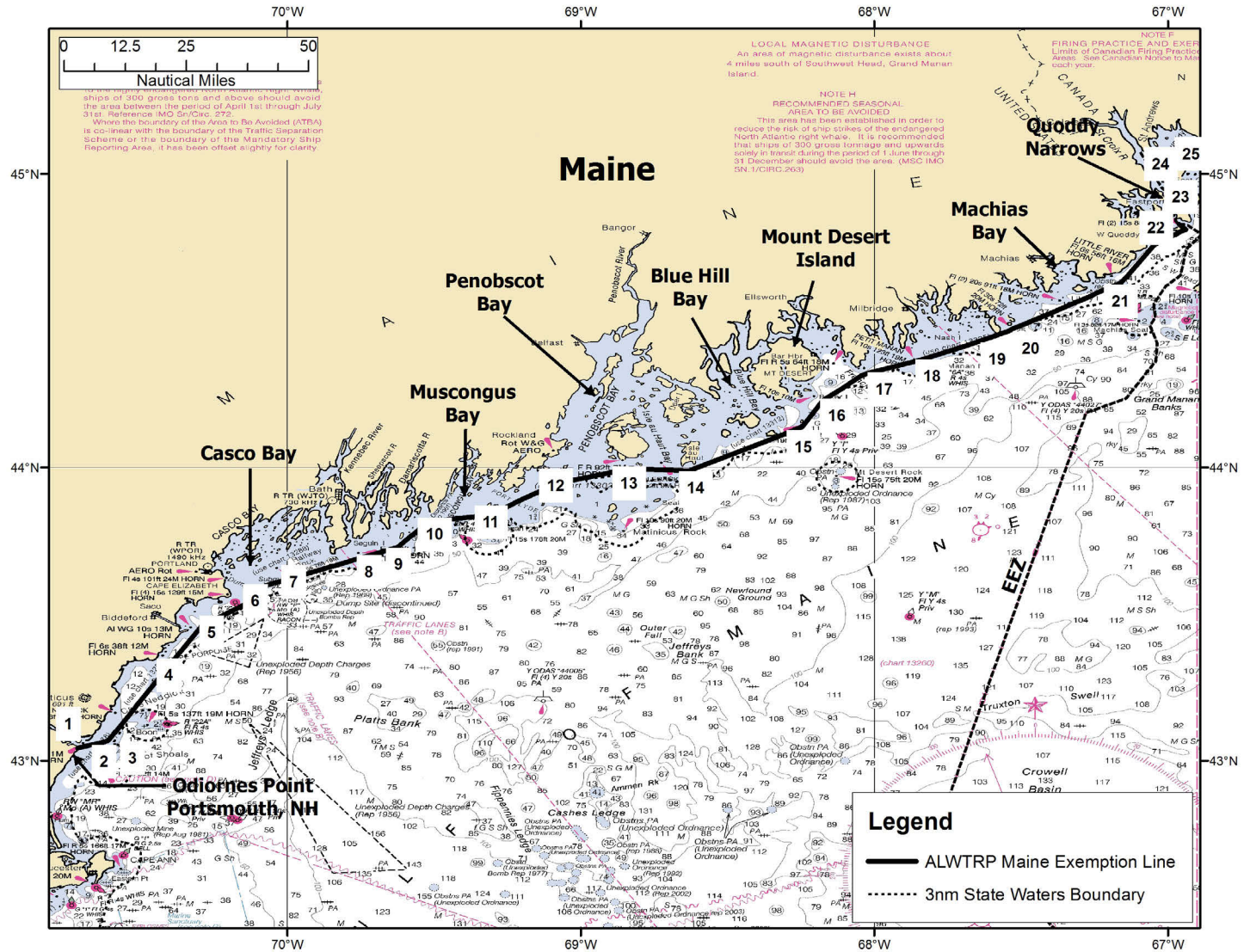
Full Plan Exemptions

Exemption Lines for Coastal Waters of RI, CT, and NY



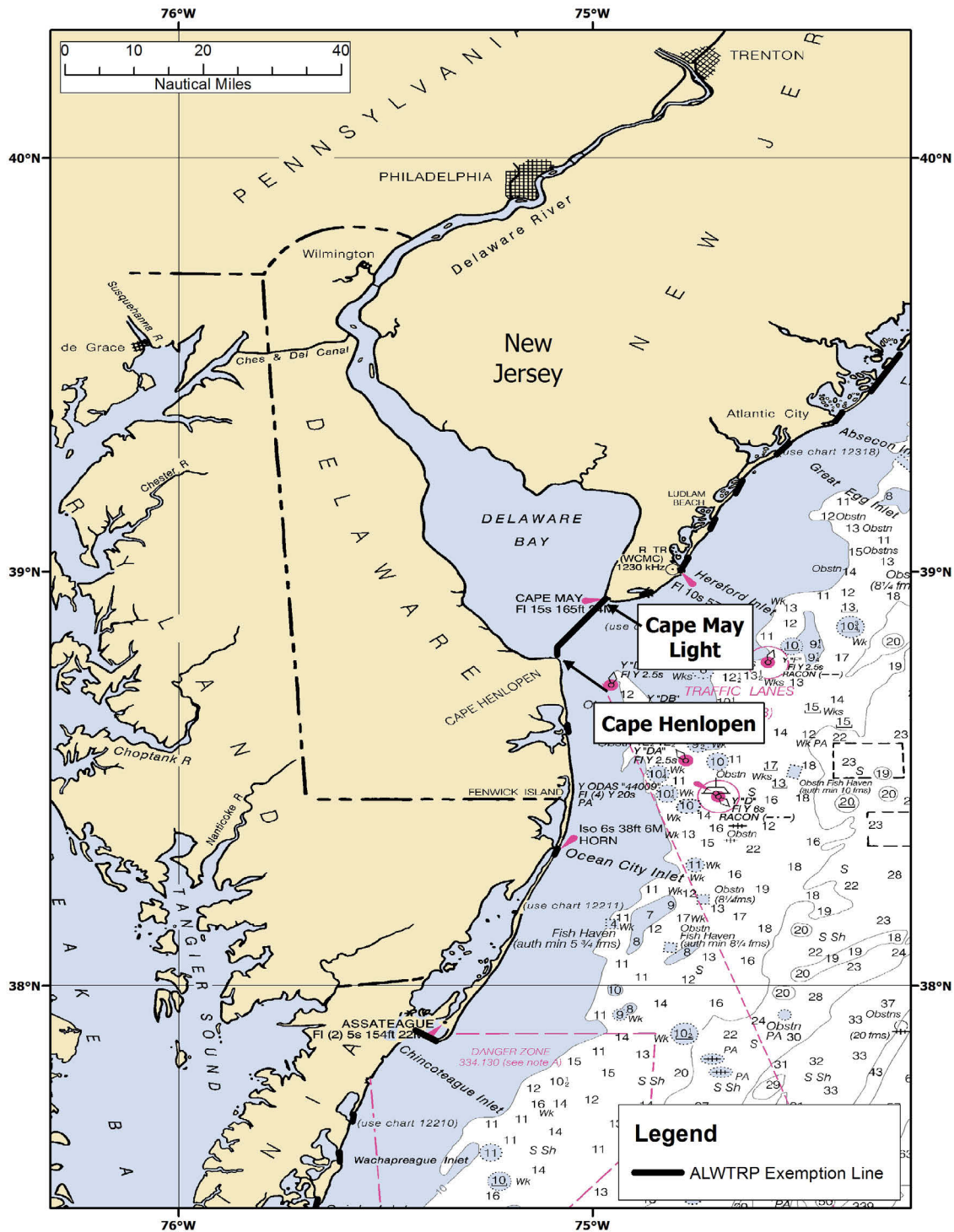
Full Plan Exemptions

Exemption Lines for Coastal Waters of Maine



Full Plan Exemptions

Exemption Lines for Delaware Bay



Min. Trap/Trawl Exemptions

Please note: while these areas may be exempt from certain minimum trap per trawl requirements, they are still subject to other Plan requirements. See your regional Plan guide for specific area requirements.

MAINE

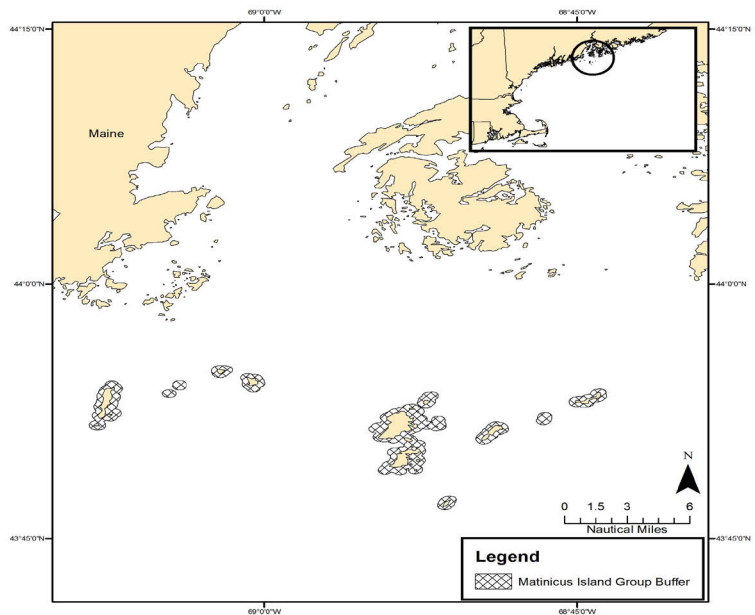
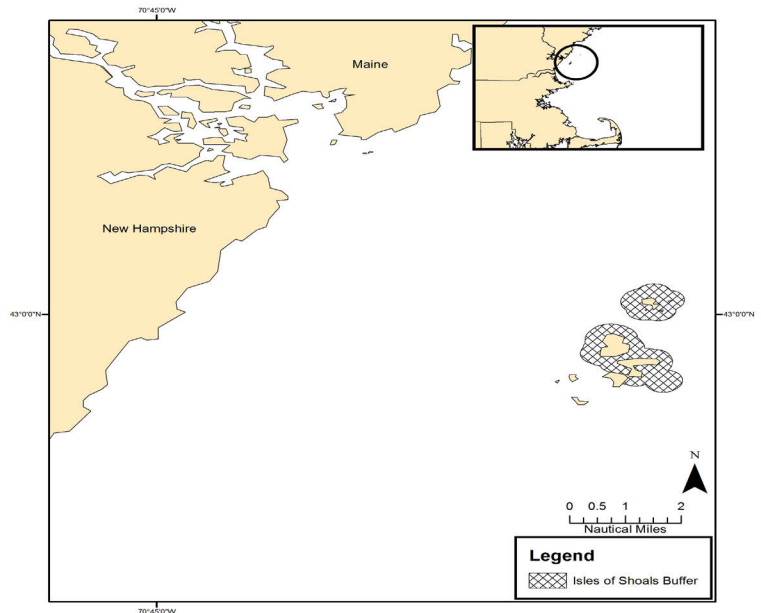
MIN. TRAP/TRAWL EXEMPTED AREAS

Waters within 1/4 mile the following islands in Maine:

- Monhegan Island
- Matinicus Island
- Ragged Island
- Matinicus Island group--Metinic, Small Green, Large Green, Seal, and Wooden Ball; and
- Isle of Shoals group--Duck, Appledore, Cedar, and Smuttynose

Minimum trap per trawl exempted areas are also required to have area specific gear marking colors for single traps:

Isle of Shoals single traps-- RED & ORANGE



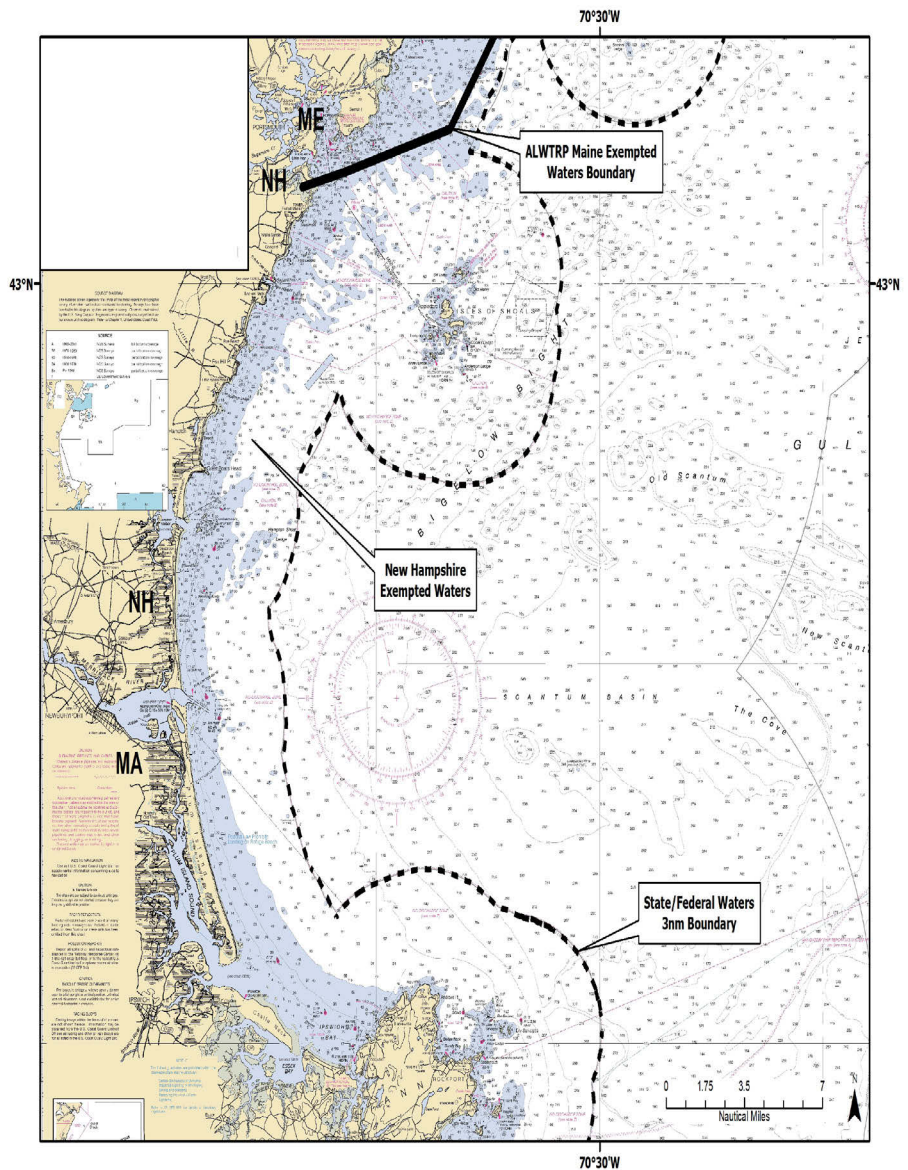
Min. Trap/Trawl Exemptions

NEW HAMPSHIRE

ALL New Hampshire state waters are exempt from the Plan's Minimum Trap Per Trawl Requirements.

MIN. TRAP/TRAWL EXEMPTED AREAS

- All New Hampshire state waters



Please note: while these areas may be exempt from certain minimum trap per trawl requirements, they are still subject to other Plan requirements. See your regional Plan guide for specific area requirements.

Min. Trap/Trawl Exemptions

MASSACHUSETTS

The following Massachusetts state waters are exempt from **ONLY** the Plan's Minimum Trap Per Trawl Requirements.

MIN. TRAP/TRAWL EXEMPTED AREAS

From the New Hampshire border to 70°W longitude south of Cape Cod, waters in EEZ Nearshore Management Area 1 and the Outer Cape Lobster Management Area (as defined in the American Lobster Fishery regulations under § 697.18), from the shoreline to 3 nautical miles from shore, and including waters of Cape Cod Bay southeast of a straight line connecting 41°55.8'N lat., 70°8.4'W long. and 41°47.2'N lat., 70°19.5'W long.

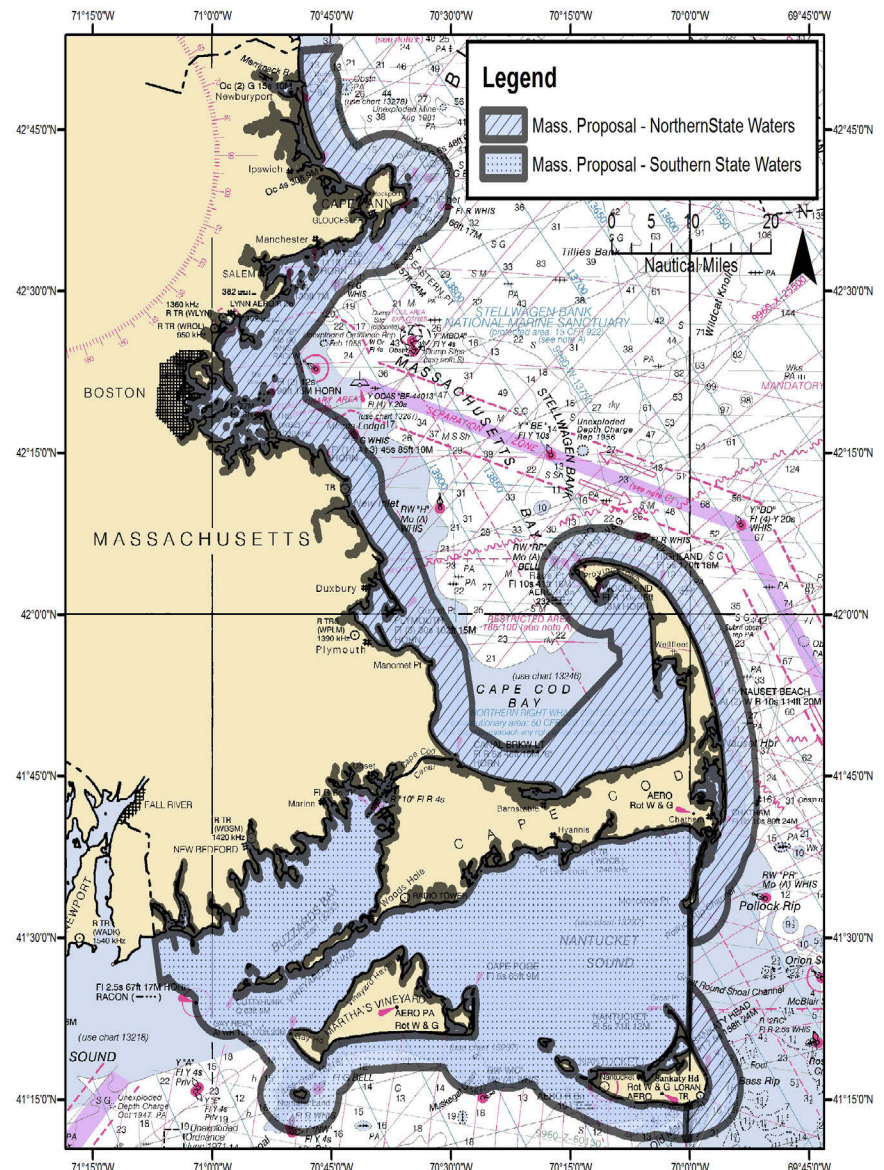
From 70°W longitude south of Cape Cod to the Rhode Island border, all Massachusetts state waters in EEZ Nearshore Management Area 2 and the Outer Cape Lobster Management Area (as defined in the American Lobster Fishery regulations under §697.18), including federal waters of Nantucket Sound west of 70°W longitude.

The following minimum trap per trawl exempted areas are also required to have area specific gear marking colors for single traps:

Single traps in exempt MA state waters in LMA 1-- RED & WHITE

Single traps in exempt MA state waters in LMA 2-- RED & BLACK

Single traps in exempt MA state waters in Outer Cape-- RED & YELLOW



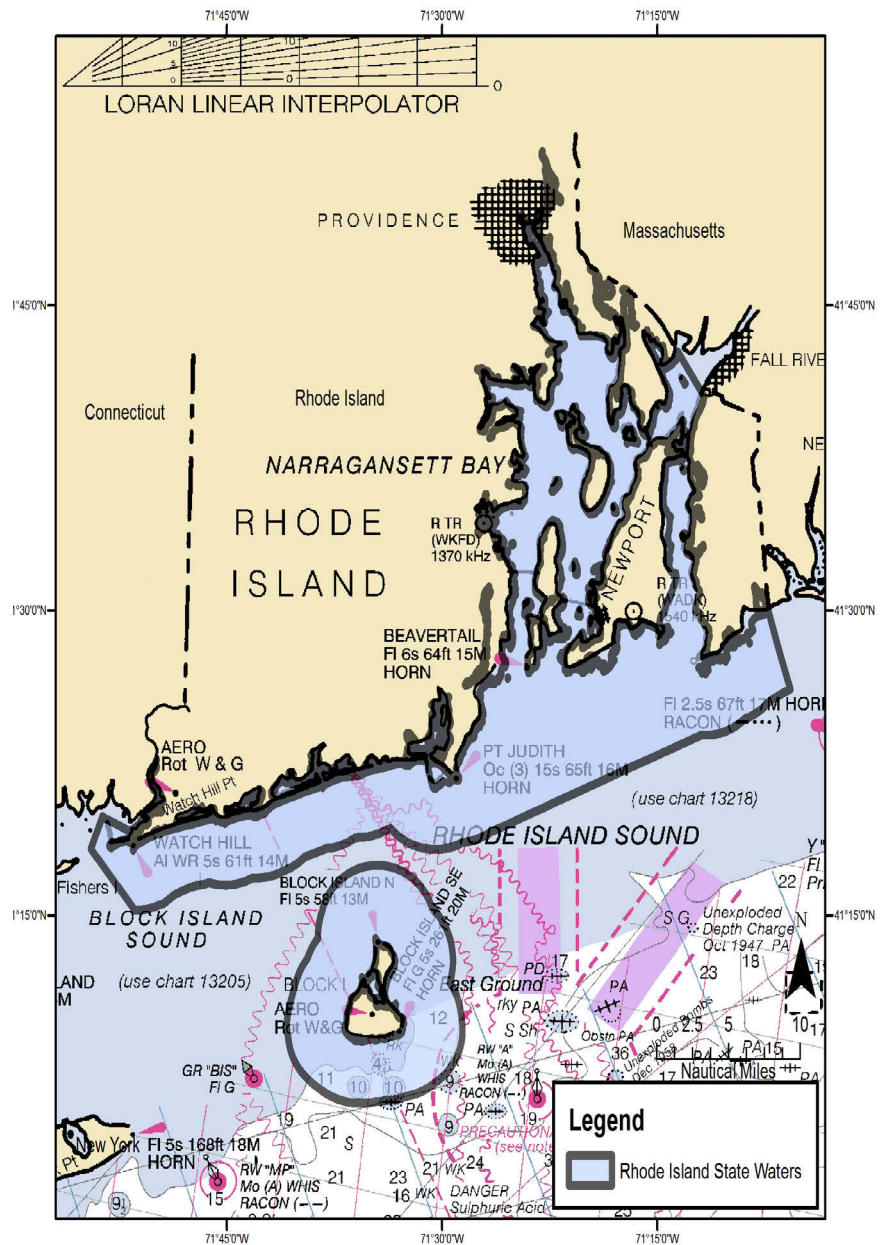
Please note: while these areas may be exempt from certain minimum trap per trawl requirements, they are still subject to other Plan requirements. See your regional Plan guide for specific area requirements.

Min. Trap/Trawl Exemptions

RHODE ISLAND

ALL Rhode Island state waters are exempt from ONLY the Plan's Minimum Trap Per Trawl Requirements.

MIN. TRAP/TRAWL EXEMPTED AREAS
<ul style="list-style-type: none"> All Rhode Island State waters
<p>Minimum trap per trawl exempted areas also required to have area specific gear marking colors for single traps:</p> <p>Single traps in exempt RI state waters -- RED & BLUE</p>



Please note: while these areas may be exempt from certain minimum trap per trawl requirements, they are still subject to other Plan requirements. See your regional Plan guide for specific area requirements.