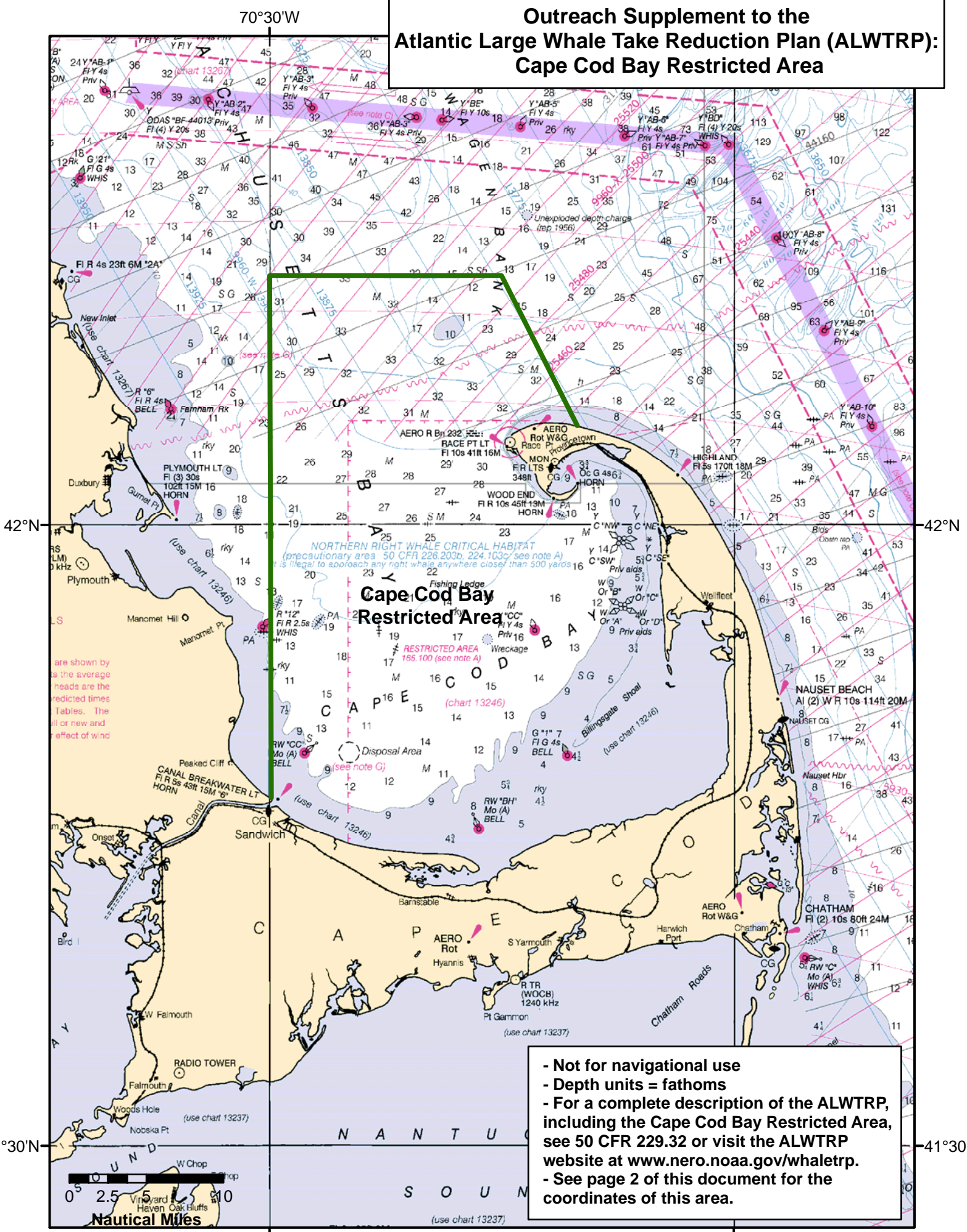


Outreach Supplement to the Atlantic Large Whale Take Reduction Plan (ALWTRP): Cape Cod Bay Restricted Area



- Not for navigational use
- Depth units = fathoms
- For a complete description of the ALWTRP, including the Cape Cod Bay Restricted Area, see 50 CFR 229.32 or visit the ALWTRP website at www.nero.noaa.gov/whaletrp.
- See page 2 of this document for the coordinates of this area.

**OUTREACH SUPPLEMENT TO THE ALWTRP:
CAPE COD BAY RESTRICTED AREA**

➤ **Cape Cod Bay (CCB) Restricted Area**

The ALWTRP CCB Restricted Area consists of the area defined below:

Cape Cod Bay Restricted Area

Point	N. Lat.	W. Long.
1	42°04.8'	70°10'
2	42°12'	70°15'
3	42°12'	70°30'
4	41°46.8'	70°30' and

on the south and east by the interior shore line of Cape Cod, Massachusetts.