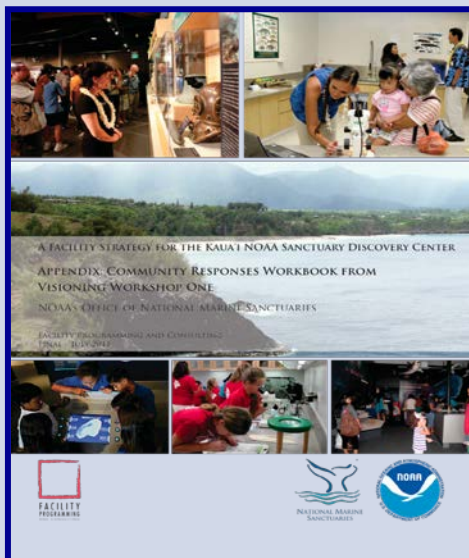


Proposed Sanctuary Discovery Center on Kaua'i



Community-developed facility strategy for a proposed Kaua'i Discovery Center.
<http://sanctuaries.noaa.gov/library/pdfs/kauai.pdf>

Kaua'i Facility Strategy

The purpose of the Office of National Marine Sanctuaries Pacific Islands Region's Kaua'i Facility Strategy is to document the vision for a Sanctuary Discovery Center on the island of Kaua'i. Strategic planning was initiated to determine community needs, set meaningful goals for the facility and to define the future course of action desired by the community, volunteers and staff. Additionally, the strategy is guided by the broader objective of increasing visibility and raising awareness among the surrounding population with regard to the connection a discovery center would share with the community, as well as the function of the National Oceanic and Atmospheric Administration and the National Marine Sanctuary System in the Pacific Islands Region.

The Office of National Marine Sanctuaries is interested in establishing a Sanctuary Discovery Center on the island of Kaua'i. Following a number of facilitated public meetings and workshops, a strategic plan for the center was developed in July 2011. However, the effort to establish a center is dependent upon the availability of funding.

Background

The current sanctuary facility located in the Kukui Grove Executive Center serves both the Papahānaumokuākea Marine National Monument and Hawaiian Islands Humpback Whale National Marine Sanctuary. The space in Lihue is a small office in a commercial business complex that serves as the base of operations for sanctuary programs on Kaua'i. The office also serves as a venue for scheduled volunteer training and various workshops and meetings. Educational and outreach materials are also available at this location. The existing facility does not provide adequate office space, operational spaces, storage, displays, or public meeting space. It is a priority of the Pacific Islands Region to establish a new public discovery center to promote education, outreach, science and research to both residents and tourists. The new discovery center is identified in the 2009 Pacific Islands Regional Master Plan.

Discovery Center Goals

The project team, relying on input from the community, developed the following goals:

- (1) A gathering place for residents and visitors of all ages that facilitates awareness, understanding and appreciation of Hawaiian environments and cultural values;
- (2) To present the overarching conservation message of the Office of National Marine Sanctuaries;
- (3) To respond to resident and tourists, making the learning experience available to everyone;
- (4) To be a model of sustainability in all areas of planning, design and operation; and
- (5) To involve a broad spectrum of the community, including residents, children, educational, volunteer and local business groups in the community centric development and operation of the center.

Community Priorities

According to the data gathered within the workshops along with other community input, a list of priorities was developed. The following activities represent those priorities as defined by the local Kauai community:

The Discovery Center on Kaua'i is envisioned to be a central community gathering place that promotes a life-long educational experience to people of all ages through exhibits, events, and activities. It will be a center of place-based learning that is sensitive to the Hawaiian culture and history.

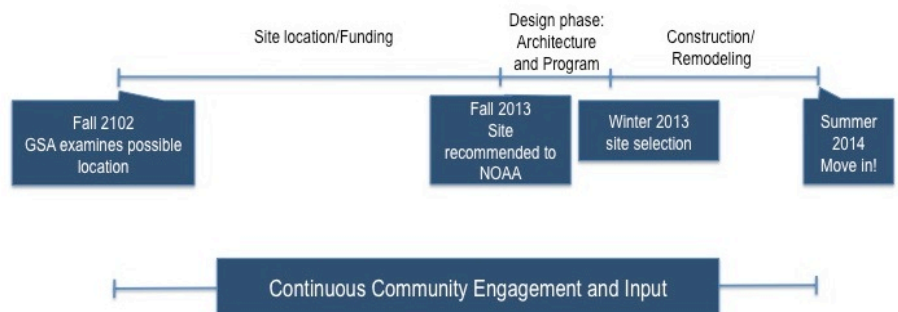
-mission statement developed by community participants

NATIONAL MARINE SANCTUARY SYSTEM



Scale varies in this perspective. Adapted from National Geographic Maps.

- Education for all ages in partnership with local schools and Kauai Community College for programming and field trips
- Community meeting space
- Marine science and research
- Wet labs and classrooms
- Land to ocean system connectivity
- Interactive displays and activities
- Animal rescue and rehabilitation
- History and importance of Kaua'i and Hawaiian culture
- Community identity
- Conservation and sustainability
- Ocean, boating and swimming safety.



This diagram outlines a process for establishing a Sanctuary Discovery Center on Kaua'i. However, all dates are approximate and subject to change due to the availability of funding. If you have any questions, please contact Yumi Yasutake at (808) 246-2177 or Yumi.Yasutake@noaa.gov.



Puanani Burgess facilitates community planning meeting.



Conservation and sustainability are community priorities for a Sanctuary Discovery Center.



Wetlab at the Mokupāpapa Discovery Center.