



UNITED STATES DEPARTMENT OF COMMERCE
National Oceanic and Atmospheric Administration
NATIONAL MARINE FISHERIES SERVICE
NORTHEAST REGION
55 Great Republic Drive
Gloucester, MA 01930-2276

MAR 30 2010

SMALL ENTITY COMPLIANCE GUIDE

NORTHEAST (NE) MULTISPECIES AMENDMENT 16 VESSEL MONITORING SYSTEM (VMS) INFORMATION

Dear NE Multispecies Permit Holder:

The regulations implementing Amendment 16 to the NE Multispecies Fishery Management Plan, which become effective May 1, 2010, require a limited access NE multispecies vessel to have an approved and operational VMS on board in order to fish on a NE multispecies day-at-sea (DAS), on a sector trip while declared into the NE multispecies fishery, or when the operator of a common pool vessel (i.e., a vessel not participating in a sector during a particular fishing year) has declared his/her intent to fish in more than one broad stock area (BSA) on the same trip. Once a NE multispecies vessel declares into its first DAS or sector trip, or declares into more than one BSA, it must use a properly functioning VMS for the remainder of the fishing year.

A vessel owner with a limited access NE multispecies permit who does not intend to, and does not, fish for any NE multispecies or use a NE multispecies DAS during the fishing year may renew the vessel's limited access NE multispecies permit without having an approved VMS, but may not fish on a sector trip, under a NE multispecies DAS, or in more than one BSA on the same trip during the fishing year.

This letter provides a summary of the applicable VMS rules under Amendment 16 in the context of existing regulations, as well as other useful VMS information.

PURCHASE AND INSTALLATION OF VMS

If you do not already use VMS, you must purchase and install a VMS unit to participate in the NE multispecies fishery, as described above. There are currently 3 companies that are approved by the NOAA Fisheries Service, NE Region, as VMS vendors:

Boatracs, Inc.
9155 Brown Deer Rd.
Suite 8
San Diego, CA 92121
Tel: (858) 458-8100
Fax: (858) 548-8116
www.boatracs.com
Contact: Client Care
1-800-262-8722 or
Winston Richardson
(858) 458-8106

SkyMate, Inc.
4230 Lafayette Center Dr.
Suite A
Chantilly, VA 20151
Tel: (866) 759-6283
Fax: (703) 814-8585
www.skymate.com
Contact:
Lyndsay Sanderson

**GMPCS Personal
Communications, Inc.**
1501 Green Road
Suite A-B
Pompano Beach, FL 33064
Virginia Beach, VA 23452
Tel: (954) 973-3100
Fax: (954) 973-4800
www.gmpcs-us.com



Please contact these companies to determine which type of VMS system meets your needs, and for additional information on the purchase and installation of your VMS unit.

VERIFICATION OF INSTALLATION

The owner of a vessel issued a limited access NE multispecies permit that intends to fish on a sector trip or use a NE multispecies DAS must send a completed NE Vessel Monitoring Program certification form (see the **Attachment 1**) to the NOAA's National Marine Fisheries Service (NMFS) Regional Office (55 Great Republic Drive, Gloucester, MA 01930). The vessel owner must sign the form verifying that an operational VMS unit that meets the minimum performance criteria has been installed on that vessel. The vessel owner must provide information including the type of unit purchased, the installing dealer (or otherwise explain that the vessel owner installed the unit), date of installation, serial number of unit, and e-mail address of vessel. The vessel owner is also required to call the NMFS Office of Law Enforcement (OLE), **NE VMS Team, at (978) 281-9213** to confirm that NMFS is receiving the VMS unit signal. Should a VMS unit require replacement, a vessel owner must submit documentation to the Regional Administrator within 3 days of installation and prior to the vessel's next trip, verifying that the new VMS unit is an operational, approved system.

ACTIVATION OF UNIT

Once an approved unit has been installed on the vessel, the owner may activate the unit with the VMS vendor. The vendor will notify NMFS, at which time NMFS will register the unit with the NE Region for monitoring purposes. It is important that the owner contact OLE to confirm receipt of the vessel's signal before taking the first trip. A properly operating VMS unit must transmit location signals every 30 or 60 minutes, depending upon the permits issued to the vessel, and must indicate a vessel's position 24 hours per day, and 7 days per week. A limited access NE multispecies vessel is required to have an operational VMS turned on at all times unless powered down (turned off) in accordance with the power down rules, explained below.

REQUIRED VMS SOFTWARE

Your VMS unit must be loaded and running the latest vendor software release approved by NMFS. In order to comply with Amendment 16 requirements, all NE VMS vessel owners are being provided a software update from their vendor in April 2010. You must install the following applicable software update before May 1, 2010, if you intend to fish on or after this date:

- Boatrac: Activity Reports version 12 and Forms version 6 (via Over-the-Air macro forms update)
- SkyMate: Software version 3.934 (via CD mailed to the owner)
- GMPCS: Trip Declaration version 8.0; Reports version 6.0 (via Over-the-Air software update)

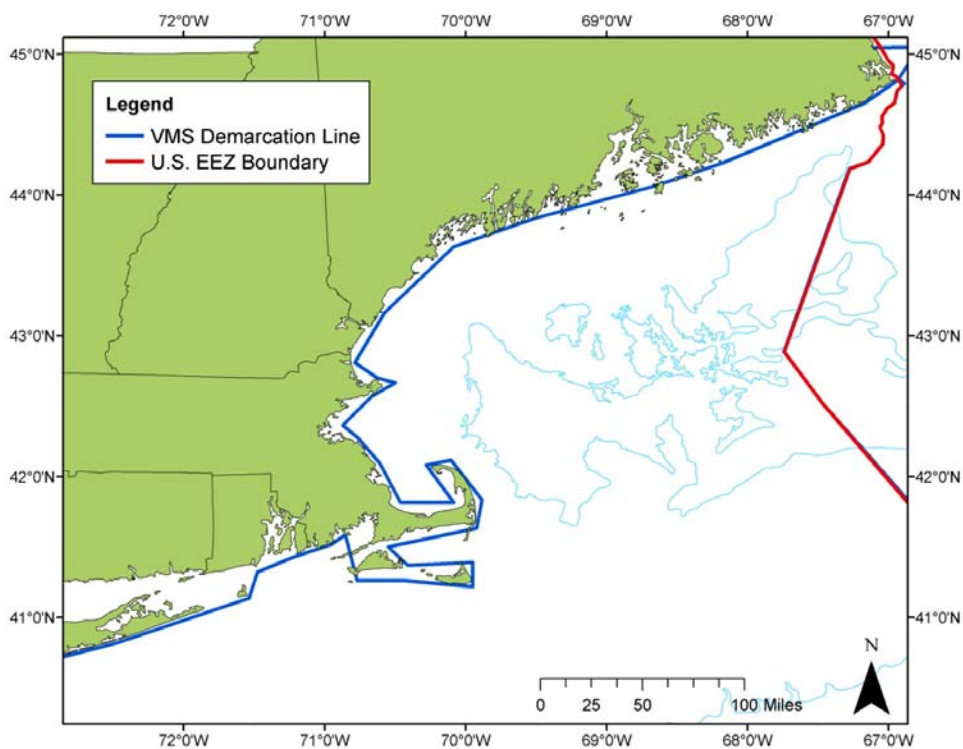
VMS REIMBURSEMENT

An eligible owner and/or operator who purchases a VMS unit to comply with Amendment 16 is eligible for reimbursement. The reimbursement expense is the purchase price of a type-approved VMS for which the owner and/or operator holds a valid NE permit, not to exceed a maximum of \$3,100. An owner and/or operator may contact the VMS Support Center to determine eligibility and begin processing the necessary paperwork. Reimbursement is limited to the cost of purchasing one VMS per registered vessel. Please see the **Attachment 2** for the current *Federal Register* notice announcing the details of the national VMS Reimbursement Program.

ACTIVITY DECLARATION REQUIREMENT

A vessel that crosses the VMS demarcation line (see **Figure 1**), has started a trip recorded by the NMFS monitoring system. The trip starts on the first VMS position seaward of the VMS demarcation line, and ends on the first VMS position shoreward of the VMS demarcation line. The owner/operator is required to send an activity declaration through the VMS unit prior to leaving port. An owner/operator intending to take a sector trip may also send the required sector trip-start hail form from the VMS unit (see below). A vessel may not change its activity declaration while on a trip, except as authorized for purposes of flipping (i.e., changing from using a Category B DAS to a Category A DAS), flexing (i.e., fishing outside of the Eastern U.S./Canada Management Area), or changing from a NE multispecies to a monkfish DAS trip.

Figure 1. VMS Demarcation Line



If a vessel fishes landward of the VMS demarcation line at any point on the trip, it must still send an activity declaration prior to leaving port. The vessel must also call into the Interactive Voice Response (IVR) system to declare the trip whether or not they intend to fish on a DAS. For trips where the vessel crosses the VMS demarcation line at some point during the trip, DAS usage (e.g., the length of the trip) will be based on the call-in notification system. Use of the call-in system does not relieve a vessel required to use the VMS notification program from the mandatory VMS positioning requirements. Prior to sailing, and while using a sailing number under the IVR system, the vessel operator must select the “DOF-DOF-xxxxxx” code in the vessel’s VMS unit to declare out of the DAS fisheries, and ensure that the VMS unit continues to properly indicate that vessel’s position 24 hours a day, 7 days a week.

DAS USE

Sector vessels must declare a NE multispecies DAS if required to participate in the monkfish or skate fisheries. Common pool vessels must declare a DAS on all NE multispecies trips.

For common pool or sector vessels fishing on a NE multispecies DAS, with the exception of vessels that fish exclusively in the Eastern U.S./Canada Area, DAS counting begins with the trip start and trip end date/time recorded by the NMFS monitoring system. To assist with DAS and trip tracking, all VMS vessels that have started a trip will receive an automated trip start and trip end notification message from NMFS. This notification message will include the activity declaration (or ‘VMS code’) received by NMFS and the date/time the trip started or ended. Vessels that misdeclare their trip are required to return to a port and send the proper declaration.

For those vessels fishing exclusively in the Eastern U.S./Canada Area, DAS counting begins with the first VMS position inside the Eastern U.S./Canada Area and ends with the first position outside the Eastern U.S./Canada Area (unless the vessel ‘flexes’ to declare its intent to also fish outside of the Eastern U.S./Canada Area on the same trip).

DAS rules for common pool and sector are summarized in the Amendment 16 permit holder letter.

POWER DOWN RULES

A vessel owner issued a NE multispecies limited access permit may power down the VMS unit if such a vessel will be out of the water for more than 72 consecutive hours, or if the vessel does not participate in any fisheries (and the vessel will not move from the dock/mooring) for a minimum period of 30 consecutive days. To receive permission to power down, the NE multispecies vessel owner must apply for and obtain a letter of exemption from the Regional Administrator, as discussed below.

The attached “VMS Power Down Exemption Request” form (see **Attachment 3**) must be sent to the OLE at 55 Great Republic Drive, Suite 02-300, Gloucester, MA 01930, or faxed to (978) 281-9317, and the request must contain the following information:

- Location of the vessel during the exemption period for which an exemption is sought;
- The exact time period for which the exemption is sought, i.e., the times/dates the VMS signal will be turned off and turned on again; and
- If requesting an exemption because the vessel will be out of the water for more than 72 consecutive hours, sufficient information to determine that the vessel will be out of the water for that time period.

Upon receipt of the written request, the Regional Administrator may issue a Letter of Exemption if it is determined that the vessel has provided sufficient information and that the exemption will not jeopardize accurate monitoring of the vessel. The letter of exemption must be on board the vessel at all times and the VMS cannot be turned off until the letter has been received. Therefore, a vessel owner requesting an exemption letter should provide the Regional Administrator ample time to review the request and respond. The dates of exemption may be revised if requested by the vessel owner in writing and approved by the Regional Administrator.

VMS RULES FOR VESSELS WITH OTHER PERMITS

For a vessel with both a NE multispecies limited access permit and another type of limited access permit that has VMS requirements (e.g., scallop, monkfish, herring, surf clam/ocean quahog), the applicable VMS rules and restrictions may be different and more involved and/or more restrictive than those described in this letter. Please note that when different VMS requirements apply, the vessel will be subject to the most restrictive rules. Please call the NE VMS Team at (978) 281-9213 if you have any questions regarding the VMS restrictions applicable to a vessel issued multiple permits (containing VMS requirements).

ACCESS TO VMS DATA

A NE multispecies limited access permit holder must allow NMFS and the U.S. Coast Guard access to the vessel's VMS data, location data, and other data, if required, at the time of, or after, its transmission.

VMS MULTISPECIES DECLARATION SCREEN AND REQUIREMENTS

There are three principal functions of the screens that you will see displayed on your VMS unit:

- Declaring the particular type of fishing activity you will be engaged in prior to the fishing trip (prior to departing port);
- Reporting information such as Vessel Trip Report (VTR) serial number, catch and discards; and
- Submitting forms of special information regarding your trip once underway.

Refer to the appropriate attachment to view the new declaration and forms screens for your specific VMS unit*:

- SkyMate VMS Users: Refer to Attachment 4
- Boatracs VMS Users: Refer to Attachment 5
- Thrane VMS Users: Refer to Attachment 6

* Please note that there may be some minor changes in the final version of the VMS screens in your new software. Contact the NE VMS Team if you have questions.

NE Multispecies Declaration Screen. A vessel with a NE multispecies limited access permit must declare that it will be fishing on a sector or NE multispecies DAS trip. The vessel must also specify: Gear type; all applicable BSA(s) in which the vessel may fish on that trip; whether fishing on a NE multispecies DAS or on a sector trip not using DAS; and the fisheries program (Regular Access, Western U.S./Canada Area, Eastern U.S./Canada Area, Regular B DAS Program; or Closed Area (CA) I Hook Gear Haddock Special Access Program (SAP)). Sector vessels not fishing on a NE multispecies DAS, must select the area only under 'Fisheries Program.'

The following instructions are meant to assist operators in making an accurate activity declaration on their multispecies declaration screen through their VMS:

Monkfish Option (optional field): This option must be declared before leaving port if you want to retain the option to change your NE multispecies "A" DAS declaration to a monkfish DAS trip while at sea. If you declare this option, your VMS code will reflect "NMS-MNK." While on your groundfish trip, you must remain within the Monkfish Northern Fishery Management Area (NFMA) to invoke this option. If you decide to invoke the option at sea because you will exceed and retain more than the incidental monkfish limit, go to the Monkfish declaration screen. On the monkfish screen, declare the same gear, BSA(s) and fisheries program as you had done prior to leaving port. If you do not invoke the monkfish option and remain within the NFMA or fish part of your trip in the SFMA, you do not need to redeclare your activity.

Gear Type (required field): Select the gear you intend to use on this trip.

BSA(s) to be Fished (required field): You must declare all groundfish BSAs that you intend to fish within on your trip. The BSAs are shown in Figure 1 of the Amendment 16 permit holder letter.

Sector or Common Pool Trip (required field): Selection is based on whether or not you will intend to take a DAS trip. Common pool vessels have only one choice and will always be required to take a DAS trip. Sector vessels have two choices and must select either “on Mults DAS” or “not on a Mults DAS.”

Fisheries Program (required field): Go to the appropriate program menu - Regular Access (open area), U.S./Canada West (VMS Area 4), U.S./Canada East (VMS Areas 1-3, 5-8), B-DAS Program (common pool only) or CA I Hook Gear Haddock SAP. Select the intended area and DAS used. Sector vessels that do not intend to take a DAS trip must declare the area only, even if there is an additional selection for DAS.

VMS declarations for vessels fishing in the U.S./Canada Management Area may involve a number of possible combinations of fishing scenarios involving different geographic locations, programs, and DAS (as applicable), each of which require the completion of different data fields in the VMS multispecies declaration screen. There are eight U.S./Canada Management Area sub-areas (also referred to as VMS Area Codes) available, as follows:

Sub-Area or VMS Area Code	Description
1	CA II Yellowtail Flounder SAP
2	Eastern U.S./Canada Area Outside of Closed Area II
3	Eastern U.S./Canada Area & CA II Yellowtail Flounder SAP
4	Western U.S./Canada Area Only
5	Eastern U.S./Canada Area Haddock SAP
6	Eastern U.S./Canada Area & Eastern U.S./Canada Haddock SAP
7	Eastern U.S./Canada Area Haddock SAP & Closed Area II Yellowtail Flounder SAP
8	Eastern U.S./Canada Area & Eastern U.S./Canada Area Haddock SAP & Closed Area II Yellowtail Flounder SAP

The areas are depicted in Figures 9–16 of Appendix 1 of the Amendment 16 permit holder letter.

Flex Option (optional field): This option may be selected at the dock/mooring or when fishing in the Eastern U.S./Canada Area. You may only flex once during a trip. There are two selections available; you may add either:

- FLEX WEST. This adds the Western U.S./Canada Area to your Eastern Area trip (for example, a flex from NMS-USC-U2 will change your code to NMS-USC-W2), or
- FLEX OPEN. This adds the Western U.S./Canada Area and Open Area to your Eastern Area trip (for example, a flex from NMS-USC-U2 will change your code to NMS-USC-O2).

Concurrent Scallop DAS Trip (optional field): If you intend to use scallop DAS during your multispecies trip in order to retain scallops, check this field. You may only do so on trips when trawl gear is declared. Be sure to declare your scallop DAS trip before leaving port thru the IVR; you will need your permit number and IVR PIN (available from the NE VMS Team).

MULTISPECIES VMS FORMS SCREENS AND REQUIREMENTS

Multispecies Catch Report: This is a revised VMS form required for sector and common pool vessels. A vessel on a NE multispecies trip must send either a single trip-level catch report (required for multiple BSA trips) or a daily catch report when fishing in special management programs (i.e., in the U.S./Canada Management Area, the Regular B DAS Program, or SAPs). The daily VMS catch report must be sent before 9am local the day after the fish were caught. Vessels that fish in a single BSA and outside the special

management programs are only required to send the VTR serial number filled in on a trip-level catch report . The catch report requires 11 species to be reported by the amount of pounds (landed weight) caught and kept within each of the four BSAs. The report also requires that the total of all fish caught (groundfish and non-groundfish) be reported from each BSA. Please see the attached copy of the Catch Reporting Screen.

Sector Trip Start and Trip End Hail. This is a new VMS form for sector vessels only. A Trip Start Hail must be submitted prior to leaving port for all sector groundfish trips. It may be submitted via the VMS form or other methods approved in your sector Operations Plan. The Trip Start Hail requires the operator to provide the vessel permit number, VTR serial number, Landing state and port, Estimated arrival, and estimated offload (for trips less than 6 hours or when fishing less than 6 hours from an offload port). A Trip End Hail must be sent 6 hours before arrival in port. The hail must be sent immediately upon leaving the fishing ground if fishing ends less than 6 hours before landing. Please see the attached copy of the Trip Start and Trip End Hail Screens.

Restricted Gear Area Notification (RGA). This is a new VMS form required for common pool vessels only. Prior to leaving port on a groundfish DAS, the form must be sent if the vessel will fish all or part of the trip within either the Western Georges Bank (GB) RGA or the Southern New England RGA (see Figure 6 of the Amendment 16 permit holder letter). The vessel must comply with the gear requirements of the RGA and no other gear is allowed onboard the vessel during the trip. Please see the attached copy of the Restricted Gear Area Notification Screen.

Gulf of Maine (GOM) Cod Trip Limit Exemption. This is an existing VMS form required for common pool vessels only. To fish in the GB Regulated Mesh Area (RMA) and retain cod in excess of the GOM trip limit, a vessel must declare via VMS prior to leaving port that it is fishing in the GOM Trip Limit Exemption Program. If you intend to fish exclusively in the U.S./Canada Management Area, you are not required to submit this form. Please see the attached copy of the Gulf of Maine Cod Trip Limit Exemption form.

VMS WEB PAGE

You can find the VMS Web Page on the Northeast Region website at <http://www.nero.noaa.gov>. Go to the “Fishing Industry Homepage” under “Features” and select “Northeast VMS Program”. You will find all VMS forms and instructions, including a full listing of all VMS declaration codes, a handy VMS User Instruction and how to contact the NE VMS Team.

This letter is only a summary of the NE multispecies regulations implemented under Amendment 16, and should not be considered as a substitute for the actual regulations. To read these regulations in their entirety, you are encouraged to obtain a complete copy by calling (978) 281-9315, or by accessing the Northeast Regional Office website.

This small entity compliance guide complies with section 212 of the Small Business Regulatory Enforcement Fairness Act of 1996.

This notice is authorized by the Administrator of the NOAA Fisheries Service, Northeast Region.

ATTACHMENT 1 – VMS Certification Form

NMFS NORTHEAST VESSEL MONITORING PROGRAM

FISHING VESSEL NAME: _____

NMFS FISHERIES PERMIT NUMBER: _____

COAST GUARD DOCUMENTATION/STATE REGISTRATION NUMBER: _____

MONITORING FOR (CIRCLE **ALL** THAT APPLY):

SCALLOP MULTISPECIES MONKFISH HERRING SURFCLAM/OCEAN QUAHOGS

=====
As required by 50 CFR 648.10(e)(1)(ii) and (iii), the vessel owner must confirm the VMS unit operation and communications service to NMFS by calling the Office of Law Enforcement (OLE) at (978) 281-9213. This is necessary to ensure that position reports (and an activity declaration) are automatically sent to and received by NMFS OLE. Your vessel is not regarded as meeting the VMS requirements until connectivity with NMFS OLE is verified.

=====
***** PLEASE COMPLETE THIS FORM BY PROVIDING ALL REQUESTED INFORMATION *****

I CERTIFY THAT SUBJECT FISHING VESSEL HAS AN OPERATIONAL VMS UNIT INSTALLED BY:

PURCHASED FROM: BOATRACS _____ SKYMATE _____ GMPCS _____
INSTALLING DEALER: NAME, ADDRESS AND TELEPHONE NUMBER:

DATE OF INSTALLATION: _____
SERIAL NUMBER OF VMS UNIT: _____
E-MAIL ADDRESS OF VESSEL: _____

VMS UNIT ACTIVATED ON VESSEL AND READY TO SEND FISHING ACTIVITY CODES? YES NO

VMS UNIT OPERATING INSTRUCTIONS SENT TO VESSEL OWNER BY VMS VENDOR? YES NO

VESSEL OWNER TRAINED ON USE OF VMS UNIT BY VMS VENDOR? YES NO

=====
I UNDERSTAND THAT THE VMS UNIT MUST REMAIN CONNECTED TO THE VMS VENDOR LISTED ABOVE AT ALL TIMES. I ALSO UNDERSTAND THAT I AM SUBJECT TO THE PROVISIONS AND REQUIREMENTS OF 50 CFR §648.9 AND §648.10 REGARDING USE OF THE VMS. I HAVE RECEIVED INSTRUCTIONS FROM THE VMS VENDOR

PERMIT HOLDER'S NAME (printed): _____

PERMIT HOLDER'S SIGNATURE: _____ DATE: _____

=====

ATTACHMENT 1 (cont'd) – VMS Certification Form

SEND THIS ORIGINAL, COMPLETED FORM TO:

NOAA FISHERIES
NE OFFICE OF LAW ENFORCEMENT
55 GREAT REPUBLIC DRIVE
GLOUCESTER, MA 01930
ATTN: VMS PROGRAM

or fax to 1-978-281-9317

OMB# 0648-0202 Expires 04/30/2010
OMB# 0648-0558 Expires 06/30/2010

Public reporting burden for this collection of information is estimated to average 5 minutes per response, including time for reviewing instructions, searching existing data sources, gathering and maintaining data needed, and completing and reviewing the collection of information. Send comments regarding this burden estimate or suggestions for reducing this burden to: Patricia A. Kurkul, Regional Administrator, Northeast Region, NMFS, 55 Great Republic Drive, Gloucester, MA 01930-2276; and to Office of Information and Regulatory Affairs, Office of Management and Budget, Washington, DC 20503.

The information will be used in the management of the Atlantic sea scallop, Northeast multispecies, monkfish, herring and surf clam/ocean quahog fisheries by insuring compliance with VMS regulations listed under 50 CFR §648.9 and §648.10 (b). Notwithstanding any other provision of the law, no person is required to respond to, nor shall any person be subject to a penalty for failure to comply with, a collection of information subject to the requirements of the Paperwork Reduction Act, unless that collection of information displays a currently valid OMB Control Number. Any information submitted by any person to obtain a permit is not confidential, and may be disclosed upon request.

ATTACHMENT 2 – VMS Reimbursement Program

Federal Register / Vol. 73, No. 88 / Tuesday, May 6, 2008 / Notices

24955

telephone conference will be held on Thursday, June 5, 2008, from 9 a.m. to 1 p.m.

ADDRESSES: A listening station for both teleconferences will be available at the Pacific Fishery Management Council, Small Conference Room, 7700 NE Ambassador Place, Suite 101, Portland, OR 97220-1384; telephone: (503) 820-2280.

Council address: Pacific Fishery Management Council, 7700 NE Ambassador Place, Suite 101, Portland, OR 97220-1384.

FOR FURTHER INFORMATION CONTACT: Mr. Chuck Tracy, Salmon Management Staff Officer, Pacific Fishery Management Council: (503) 820-2280.

SUPPLEMENTARY INFORMATION: The purpose of the work session is to review information in the Council's June meeting briefing book related to salmon management, and to develop comments and recommendations for consideration at the June 2008 Council meeting. Although non-emergency issues not contained in the meeting agenda may come before these groups for discussion, those issues may not be the subject of formal action during these meetings. Action will be restricted to those issues specifically listed in this notice and any issues arising after publication of this notice that require emergency action under section 305(c) of the Magnuson-Stevens Fishery Conservation and Management Act, provided the public has been notified of the Council's intent to take final action to address the emergency.

Special Accommodations

These meetings are physically accessible to people with disabilities. Requests for sign language interpretation or other auxiliary aids should be directed to Ms. Carolyn Porter at (503) 820-2280 at least 5 days prior to the meeting date.

Dated: May 1, 2008.

Tracey L. Thompson,

Acting Director, Office of Sustainable Fisheries, National Marine Fisheries Service.
[FR Doc. E8-9914 Filed 5-5-08; 8:45 am]

BILLING CODE 3510-22-S

DEPARTMENT OF COMMERCE

National Oceanic and Atmospheric Administration

RIN 0648-XH58

Pacific Halibut Fishery; Guideline Harvest Levels for the Guided Recreational Halibut Fishery; Correction

AGENCY: National Marine Fisheries Service (NMFS), National Oceanic and Atmospheric Administration (NOAA), Commerce.

ACTION: Notice; correction.

SUMMARY: NMFS published a notice of Pacific halibut guideline harvest levels (GHLs) for the guided sport charter vessel fishery in the International Pacific Halibut Commission regulatory areas 2C and 3A in the Federal Register on February 5, 2008 (73 FR 6709). This notice contained an incorrect metric conversion for the Area 2C GHL.

FOR FURTHER INFORMATION CONTACT: Julie Scheurer, (907) 586-7356, or email at julie.scheurer@noaa.gov.

Correction

In the Federal Register of February 5, 2008 (73 FR 6709), on page 6710, in the first column, second paragraph, correct the fourth sentence to read:

The corresponding GHLs are 931,000 lb (422.3 mt) in Area 2C, and 3,650,000 lb (1,655.6 mt) in Area 3A.

Dated: April 28, 2008.

Emily H. Menashes

Acting Director, Office of Sustainable Fisheries, National Marine Fisheries Service.

[FR Doc. E8-9869 Filed 5-5-08; 8:45 am]

BILLING CODE 3510-22-S

DEPARTMENT OF COMMERCE

National Oceanic and Atmospheric Administration

RIN 0648-ZB93

Vessel Monitoring Systems (VMS); Revision of the Enhanced Mobile Transmitter Unit (E-MTU) Reimbursement Program

AGENCY: National Marine Fisheries Service (NMFS), National Oceanic and Atmospheric Administration (NOAA), Commerce.

ACTION: Notice.

SUMMARY: NMFS revises the availability of grant funds for vessel owners and/or operators who have purchased an Enhanced Mobile Transmitter Unit (E-MTU) for the purpose of complying with fishery regulations requiring the

use of Vessel Monitoring Systems (VMS). These funds will be used to reimburse vessel owners and/or operators for the purchase price of the E-MTU. This notice supersedes all previous notices on VMS MTU or E-MTU reimbursement.

FOR FURTHER INFORMATION CONTACT: For current listing information, questions regarding VMS installation or activation checklists, contact the VMS Support Center, NOAA Fisheries Office for Law Enforcement (OLE), 8484 Georgia Avenue, Suite 415, Silver Spring, MD 20910, phone 888-219-9228, fax 301-427-0049.

For questions regarding E-MTU type approval or information regarding the status of VMS systems being evaluated by NOAA for approval, contact Jonathan Pinkerton, National VMS Program Manager, phone 301-427-2300; fax 301-427-2055.

For questions regarding reimbursement applications contact Randy Fisher, Executive Director, Pacific States Marine Fisheries Commission (PSMFC), 205 SE Spokane Street, Suite 100, Portland, OR 97202, phone 503-595-3100, fax 503-595-3232.

SUPPLEMENTARY INFORMATION:

I. Funding Opportunity Description

This reimbursement opportunity is available to fishing vessel owners and/or operators that have purchased an approved E-MTU device in order to comply with fishery regulations developed in accordance with 16 U.S.C. 1801 *et seq.* Only those vessel owners and/or operators purchasing an E-MTU for compliance with fishery management regulations are eligible for this funding opportunity. The reimbursable expense is the purchase price of a type-approved E-MTU for which the owner and/or operator holds a valid commercial fishing permit or license, not to exceed a maximum of \$3,100.00.

II. Eligibility

To be eligible to receive reimbursement vessel owners and/or operators must first purchase an E-MTU type-approved for a VMS required fishery from an authorized E-MTU dealer and receive a receipt of purchase from the authorized E-MTU dealer. The vessel owner and/or operator must have the E-MTU properly installed by an authorized dealer or installer on the vessel and activated utilizing a type-approved communications provider. Upon completion of the installation and activation process, the vessel owner and/or operator must contact the VMS

ATTACHMENT 2 (cont'd) – VMS Reimbursement Program

24956

Federal Register / Vol. 73, No. 88 / Tuesday, May 6, 2008 / Notices

Support Center by calling 888-219-9228 to ensure the vessel is properly activated and registered in the VMS system. OLE does not consider a vessel in compliance with activation and registration procedures until the E-MTU signal has been received and processed by OLE.

Vessel owners and/or operators must not be in arrears with a payment owed to the Agency for a civil monetary penalty. Affected vessel owners and/or operators may become eligible for the reimbursement if the outstanding penalty is paid in full within 30 days of the denial of the reimbursement. After payment, vessel owners and/or operators must contact the VMS Support Center and provide documentation to support the defrayment of the penalty to receive a confirmation code for reimbursement purposes.

III. Process

Vessel owners and/or operators that have purchased an E-MTU, and have validated their compliance with the applicable regulations through OLE, may contact the PSMFC, 205 SE Spokane Street, Suite 100, Portland, Oregon 97202, phone 503-595-3100, fax 503-595-3232, for a reimbursement application. Once the application is received and completed by the vessel owner and/or operator, it must be returned to PSMFC along with proof of eligibility in order to qualify for an award. The minimum required proof of eligibility includes proof of authorized operation of a commercial fishing vessel in a VMS required fishery; purchase receipt from an authorized E-MTU dealer, purchase price of a type-approved E-MTU; and a valid compliance confirmation code issued by OLE. Additional documentation may be required for eligibility in particular fisheries. Vessel owners and/or operators should contact PSMFC for a complete listing documentation requirements.

Vessel owners and/or operators are not restricted as to which type-approved E-MTU device they can purchase. However, the amount of the reimbursement will be limited to the cost of the E-MTU type-approved for the fishery, and will not exceed a maximum of \$3,100.00. Vessel owners and/or operators are encouraged to compare the features of all E-MTU devices type-approved for the VMS required fishery of interest and explore finance options prior to making a purchase decision. Reimbursement is limited to the cost of purchasing one E-MTU per registered vessel.

Dated: April 30, 2008.

Samuel D. Rauch III
*Deputy Assistant Administrator for
Regulatory Programs, National Marine
Fisheries Service.*

[FR Doc. E8-9994 Filed 5-5-08; 8:45 am]

BILLING CODE 3510-22-S

DEPARTMENT OF DEFENSE

Department of the Air Force

U.S. Air Force Academy Board of Visitors Meeting

AGENCY: Department of the Air Force, U.S. Air Force Academy Board of Visitors.

ACTION: Notice of meeting.

SUMMARY: Pursuant to 10 U.S.C. 9355, the U.S. Air Force Academy (USAFA) Board of Visitors (BoV) will meet in the Russell Senate Office Building (note, this is a new meeting location), Washington, DC, on 8 May 2008. The purpose of this meeting is to review morale and discipline, curriculum, instruction, physical equipment, fiscal affairs, academic methods, and other matters relating to the Academy. Meeting sessions will begin at 9 a.m. on 8 May 2008, in room 232-A of the Russell Senate Office Building, Washington, DC.

Pursuant to 5 U.S.C. 552b, as amended, and 41 CFR 102-3.155, the Department of Defense has determined that a portion of this meeting shall be closed to the public. The Administrative Assistant to the Secretary of the Air Force, in consultation with the Office of the Air Force General Counsel, has determined that one portion of this meeting be closed to the public because it will involve matters covered by subsection (c)(6) of 5 U.S.C. 552b.

Public attendance at the open portions of this USAFA BoV meeting shall be accommodated on a first-come, first-served basis up to the reasonable and safe capacity of the meeting room. In addition, any member of the public wishing to provide input to the USAFA BoV should submit a written statement in accordance with 41 CFR 102-3.140(c) and section 10(a)(3) of the Federal Advisory Committee Act (FACA) and the procedures described in this paragraph. Written statements must address the following details: the issue, discussion, and a recommended course of action. Supporting documentation may also be included as needed to establish the appropriate historical context and provide any necessary background information. Written statements can be submitted to the

Designated Federal Officer (DFO) at the address detailed below at any time. However, if a written statement is not received at least 10 days before the first day of the meeting which is the subject of this notice, then it may not be provided to, or considered by, the BoV until its next open meeting. The DFO will review all timely submissions with the BoV Chairperson and ensure they are provided to members of the BoV before the meeting that is the subject of this notice. For the benefit of the public, rosters that list the names of BoV members and any releasable materials presented during open portions of this BoV meeting shall be made available upon request.

If, after review of timely submitted written comments, the BoV Chairperson and DFO deem appropriate, they may choose to invite the submitter of the written comments to orally present their issue during an open portion of the BoV meeting that is the subject of this notice. Members of the BoV may also petition the Chairperson to allow specific persons to make oral presentations before the BoV. Any oral presentations before the BoV shall be in accordance with 41 CFR 102-3.140(c), section 10(a)(3) of the FACA, and this paragraph. The DFO and BoV Chairperson may, if desired, allot a specific amount of time for members of the public to present their issues for BoV review and discussion. Direct questioning of BoV members or meeting participants by the public is not permitted except with the approval of the DFO and Chairperson.

FOR FURTHER INFORMATION CONTACT: Or to attend this BoV meeting, contact Mr. Scotty Ashley, USAFA Programs Manager, Directorate of Airman Development and Sustainment, Deputy Chief of Staff, Manpower and Personnel, AF/A1DOA, 1040 Air Force Pentagon, Washington, DC 20330-1040, (703) 695-3594.

Bao-Anh Trinh,

Air Force Federal Register Liaison Officer.

[FR Doc. E8-9928 Filed 5-5-08; 8:45 am]

BILLING CODE 5001-05-P

DEFENSE NUCLEAR FACILITIES SAFETY BOARD

FOIA Fee Schedule Update

AGENCY: Defense Nuclear Facilities Safety Board.

ACTION: Notice.

SUMMARY: The Defense Nuclear Facilities Safety Board is publishing its annual update to the Freedom of

ATTACHMENT 3 – VMS Power Down Exemption



Vessel Monitoring System (VMS) Power Down Exemption Request

Regulations implementing the requirements for the vessel monitoring system (VMS) within the NMFS Northeast Region allow for vessels to be exempt from the requirement to transmit the vessel's location at all times if one or more of the following conditions are met:

- (1) The vessel will be continuously out of the water for more than 72 consecutive hours.
- (2) A vessel with a valid multispecies limited access, scallop limited access or surfclam/ocean quahog permit (only) remains at the dock/mooring and does not engage in any fisheries for a minimum period of 30 consecutive days.

Vessel owners or operators may sign out of the VMS program by first obtaining a VMS 'Letter of Exemption' from the Regional Administrator. To obtain this exemption letter, fill out the appropriate information below and mail or fax (978-281-9317) this form to: National Marine Fisheries Service, Office of Law Enforcement (OLE), VMS Team, 55 Great Republic Drive, Gloucester, MA, 01930.

Vessel: _____ Permit # _____ Official # _____

Exemption Period: Date VMS to be Turned Off: _____; Date VMS to be Turned On: _____

Check either Option (1) or Option (2) below, and complete the required information:

Option (1): Vessel will be out of the water for more than 72 consecutive hours.

Ship Yard and address: _____

Option (2): Vessel will remain at the dock/mooring and not engage in any fisheries for a minimum period of 30 consecutive days. (Note: This option is only available to multispecies limited access, scallop limited access and surfclam/ocean quahog permit holders who do not hold more restrictive VMS permits).

Port Location: _____

NOTE: The VMS unit must remain operational until a Letter of Exemption from the Regional Administrator is received to turn off a vessel's VMS unit. Upon receipt of the Letter of Exemption, the vessel owner/operator may discontinue VMS operation for the period requested above. The Letter of Exemption must be on board the vessel at all times. Vessel owners/operators may request changes to the time period for this exemption through a written request to the Regional Administrator, provided the minimum period is met.

This form is required to obtain approval for a vessel to turn off their VMS unit consistent with the power down exemption regulations at 50 CFR 648.9(c)(2) and to restart VMS operation. Making a false statement on this form is punishable by law.

Notwithstanding any other provision of the law, no person is required to respond to, nor shall any person be subject to a penalty for failure to comply with, a collection of information subject to the requirements of the Paperwork Reduction Act, unless that collection of information displays a currently valid OMB Control Number.

Public reporting burden for this collection of information is estimated to average 5 minutes per response, including time for reviewing instructions, searching existing data sources, gathering and maintaining the data needed, and completing and reviewing the information. Send comments regarding this burden estimate or suggestions for reducing this burden estimate or any other aspect of this collection of information to NMFS, 55 Great Republic Drive, Gloucester, MA, 01930. OMB Control Number 0648-0202. OMB Expiration Date 04/30/2010.

ATTACHMENT 4

NE Multispecies Declaration Screen - SkyMate

Note: The declaration menu shown below represents the view that a SkyMate VMS user would see if the 'drop down' menus were expanded.

ADD MONKFISH OPTION [**NMS-MNK**]:

SELECTING ALLOWS A CHANGE AT SEA TO
MONKFISH DAS, ONLY IF FISHING WITHIN
NFMA. NOT VALID FOR B-DAS TRIPS.

NOTE: TO CHANGE AT SEA TO MONKFISH DAS,
YOU MUST REDECLARE TRIP FROM MONKFISH
SCREEN (SELECT NFMA AND SAME GEAR/BSA/PROGRAM).

SELECT GEAR TYPE:

TRAWL
 HOOK
 DAY GILLNET
 TRIP GILLNET

SELECT BROAD STOCK AREA (BSA):

NOTE: CHECK ALL THAT APPLY

BSA 1-GULF OF MAINE
 BSA 2-INSHORE GEORGES BANK
 BSA 3-OFFSHORE GEORGES BANK
 BSA 4-SOUTHERN NEW ENGLAND

SELECT SECTOR OR COMMON POOL TRIP:

COMMON POOL OR SECTOR TRIP ON MULTS DAS
 SECTOR TRIP WHEN NOT ON MULTS DAS

NOTE: ALL VESSELS MUST SELECT AN AREA
UNDER FISHERIES PROGRAM BELOW.

SELECT FISHERIES PROGRAM:

REGULAR ACCESS (A DAS) [**NMS-MUL/MNK**]

OPEN ONLY

US/CANADA WEST (A DAS) [**NMS-USC/MNK**]

AREA 4 ONLY

AREA 4 AND OPEN

ATTACHMENT 4 (cont'd)

NE Multispecies Declaration Screen – SkyMate

US/CANADA EAST [**NMS-USC/MNK**]

- AREA 1
 - USING A DAS
 - USING B-REG DAS
 - USING B-RES DAS
- AREA 2 (A DAS)
- AREA 3 (A DAS)
- AREA 5
 - USING A DAS
 - USING B-REG DAS
 - USING B-RES DAS
- AREA 6 (A DAS)
- AREA 7
 - USING A DAS
 - USING B-REG DAS
 - USING B-RES DAS
- AREA 8 (A DAS)

FLEX OPTION - ADD AREA TO YOUR EASTERN AREA TRIP:

- FLEX WEST (ADD AREA 4 ONLY)
- FLEX OPEN (ADD AREA 4 AND OPEN)

NOTE: ONLY ONE FLEX PER TRIP ALLOWED

B-DAS PROGRAM [**NMS-BDP**]

NOTE: APPLIES TO COMMON POOL ONLY

SELECT DAS USED:

- A DAS (USE TO FLIP FROM B-DAS)
- B-REG DAS

NOTE: B-DAS MUST BE FLIPPED TO
A-DAS IF TRIP LIMIT EXCEEDED.

SELECT FISHING AREA:

- OPEN ONLY
 - AREA 4 ONLY
 - AREA 4 AND OPEN
 - AREA 2

FLEX OPTION - ADD TO YOUR EASTERN AREA 2 TRIP:

- FLEX WEST (ADD AREA 4 ONLY)
- FLEX OPEN (ADD AREA 4 AND OPEN)

NOTE: ONLY ONE FLEX PER TRIP ALLOWED

CA-1 HOOK GEAR HADDOCK SAP [**NMS-HGH/MNK**]

- CA-1 HGH SAP
 - USING A DAS
 - USING B-REG DAS
 - USING B-RES DAS

ADD CONCURRENT SCALLOP DAS TRIP:

- CHARGE SCALLOP DAS TO MULTS TRIP

NOTE: TRAWL ONLY. YOU MUST ALSO
DECLARE SCALLOP DAS TRIP USING IVR.

ATTACHMENT 4 (cont'd)

Monkfish Declaration Screen – SkyMate

SELECT GEAR TYPE:

- TRAWL
- HOOK
- DAY GILLNET

SELECT MANAGEMENT AREA:

- ENTIRE TRIP FISHED IN NFMA [**MNK-NMA**]
- ANY PART OF TRIP FISHED IN SFMA [**MNK-SMA**]

SELECT MULTS BROAD STOCK AREA (BSA):

NOTE: CHECK ALL THAT APPLY.

- MONK DAS-ONLY TRIP - NO BSA REQUIRED
- BSA 1-GULF OF MAINE
- BSA 2-INSHORE GEORGES BANK
- BSA 3-OFFSHORE GEORGES BANK
- BSA 4-SOUTHERN NEW ENGLAND

SELECT FISHERIES PROGRAM:

REGULAR ACCESS (OPEN AREA)

- USING MULTS A AND/OR MONK DAS
- USING SCALLOP AND MONK DAS

US/CANADA WEST (USING MULTS A AND MONK DAS)

- AREA 4 ONLY
- AREA 4 AND OPEN

US/CANADA EAST (USING MULTS A AND MONK DAS)

- AREA 1
- AREA 2
- AREA 3
- AREA 5
- AREA 6
- AREA 7
- AREA 8

FLEX OPTION - ADD AREA TO YOUR EASTERN AREA TRIP:

- FLEX WEST (ADD AREA 4 ONLY)
- FLEX OPEN (ADD AREA 4 AND OPEN)

NOTE: ONLY ONE FLEX PER TRIP ALLOWED

OFFSHORE AREA ACCESS (PERMIT CAT F ONLY)

- USING MULTS A AND/OR MONK DAS
- USING SCALLOP AND MONK DAS

CA-1 HOOK GEAR HADDOCK SAP

- USING MULTS A AND MONK DAS

ADD CONCURRENT SCALLOP DAS TRIP:

- CHARGE SCALLOP DAS TO MONKFISH TRIP

NOTE: TRAWL ONLY. YOU MUST ALSO
DECLARE SCALLOP DAS TRIP USING IVR.

ATTACHMENT 4 (cont'd)

Multispecies Catch Report – SkyMate

This report is to be used for all groundfish trips, including trips into multiple broad stock areas (BSA), US/Canada Management Area, Regular B-DAS Program, Special Access Programs.

For Multiple BSA Trips: Submit one trip-level report before crossing the VMS demarcation line on return trip.

For Single BSA Trips: Submit only the VTR Serial Number and no other information before crossing the VMS demarcation line on return trip.

For US/CA, B-DAS and/or SAP Trips: Submit daily by 9am the day after the fish were caught.

Important: Report species in lbs kept. You must include a 'zero' in those spaces below in which no fish were kept. VTR serial number must be the same as reported to the dealer. If you use multiple VTR pages this trip, record the serial number from the first VTR page used.

Vessel Trip Report (VTR) Serial Number: _____
Date fish caught: Month (01-12) _____
Day (01-31) _____
Statistical Area: _____

SPECIES KEPT	GOM	IN GB	OFF GB	SNE/MA
Cod	_____	_____	_____	_____
Yellowtail	_____	_____	_____	_____
Pollock	_____	_____	_____	_____
White hake	_____	_____	_____	_____
Winter flndr	_____	_____	_____	_____
Witch flndr	_____	_____	_____	_____
Haddock	_____	_____	_____	_____
Windowpane	_____	_____	_____	_____
Redfish	_____	_____	_____	_____
Plaice	_____	_____	_____	_____
Halibut	_____	_____	_____	_____

All Fish Kept _____

Note: For 'All Fish Kept', include total lbs of all groundfish and non-groundfish.

ATTACHMENT 4 (cont'd)

Sector Trip Start and Trip End Hail - SkyMate

_ Sector Trip Start Hail

This report may be used by any sector vessel to satisfy the hail requirements for all groundfish trips.

Vessel Permit Number: _____
Vessel Trip Report (VTR) Serial Number: _____
Landing State (abbreviated): _____
Landing Port City: _____
Estimated Arrival: _____
(Report in: MMDDHHMI)(HH=00-23)
Estimated Offload: _____
(Provide only for trips <6 hrs or if
fishing within 6 hrs of offload port)
(Report in: MMDDHHMI)(HH=00-23)

_ Sector Trip End Hail

This report may be used by any sector vessel following the submission of a Trip Start Hail. This report must be sent 6 hours before arrival. If fishing ends less than 6 hours before landing, the report must be sent immediately upon leaving the fishing grounds.

Vessel Permit Number: _____
Vessel Trip Report (VTR) Serial Number: _____
Landing State: (abbreviated) _____
Landing Port City: _____
Dealer: _____
Estimated Arrival: _____
(Report in: MMDDHHMI)(HH=00-23)
Estimated Offload: _____
(Report in: MMDDHHMI)(HH=00-23)
Second Offload State: _____
Second Offload Port City: _____
Total Groundfish Kept: _____ (lbs)
Total non-Groundfish Kept: _____ (lbs)

ATTACHMENT 4 (cont'd)

Restricted Gear Area Notifications - SkyMate

Common Pool vessels declaring a NE multispecies DAS and intending to fish all or part of their trip within an RGA are required to send this form prior to leaving port. You must comply with all gear requirements within the RGA. Other gear is not allowed onboard when fishing part of a trip in the RGA.

_ Western Georges Bank (GB) Multispecies RGA

Submit this form if you intend to fish within the Western GB Multispecies RGA. You can fish both inside and outside this RGA, but you will be held to the most restrictive measures during your entire trip.

_ Southern New England (SNE) Multispecies RGA

Submit this form if you intend to fish within the SNE Multispecies RGA. You can fish both inside and outside this RGA, but you will be held to the most restrictive measures during your entire trip.

ATTACHMENT 4 (cont'd)

Gulf of Maine Cod Trip Limit Exemption – SkyMate

Note: Vessels declaring into the US/Canada Management Area exclusively are not required to submit this form.

Submit this form, prior to leaving port, if you intend to fish south of the Gulf of Maine - Regulated Mesh Area (GOM RMA) and would like to be exempt from the GOM cod trip limit and subject to the Georges Bank (GB) trip limit instead. If you submit this form you will be subject to the GB cod trip and can't fish in the GOM RMA for the duration of your trip. Transiting is allowed provided all gear is properly stowed while within the GOM RMA.

ATTACHMENT 5

NE Multispecies Declaration Screens (3)* – Boatracs

Macro 19

VESSEL ACTIVITY REPORT V12.0
NE - MULTISPECIES DECLARATION (PAGE 1)

_ ADD MONKFISH OPTION (NMS-MNK)
SELECTING ALLOWS A CHANGE AT SEA TO
MONKFISH DAS, ONLY IF FISHING WITHIN
NFMA. NOT VALID FOR B-DAS TRIPS.
NOTE: TO CHANGE AT SEA TO MONKFISH
DAS, YOU MUST REDECLARE TRIP FROM
MONKFISH SCREEN (SELECT NFMA AND SAME
GEAR/BSA/PROGRAM).

SELECT GEAR TYPE:
_ TRAWL _ HOOK
_ DAY GILLNET _ TRIP GILLNET

SELECT BROAD STOCK AREA (BSA):
NOTE: CHECK ALL THAT APPLY
_ BSA 1-GULF OF MAINE
_ BSA 2-INSHORE GEORGES BANK
_ BSA 3-OFFSHORE GEORGES BANK
_ BSA 4-SOUTHERN NEW ENGLAND

SELECT SECTOR OR COMMON POOL TRIP:
_ ALL TRIPS USING MULTS DAS
_ SECTOR TRIP NOT USING MULTS DAS
NOTE: ALL VESSELS MUST SELECT AN AREA
UNDER FISHERIES PROGRAM BELOW.

SELECT FISHERIES PROGRAM:
REGULAR ACCESS (A DAS) (NMS-MUL/MNK)
_ OPEN ONLY
CA-1 HOOK GEAR HADDOCK (NMS-HGH/MNK)
_ CA-1 HOOK GEAR HADDOCK SAP
 USING _ A DAS, _ B-REG, _ B-RES

ADD CONCURRENT SCALLOP DAS TRIP:
_ CHARGE SCALLOP DAS TO MULTS TRIP
NOTE: TRAWL ONLY. YOU MUST ALSO
DECLARE SCALLOP DAS TRIP USING IVR.

Macro 20

VESSEL ACTIVITY REPORT V12.1
NE - MULTISPECIES DECLARATION (PAGE 2)

_ ADD MONKFISH OPTION (NMS-MNK)
 SEE DETAILS ON MACRO 19

SELECT GEAR TYPE:
_ TRAWL _ HOOK
_ DAY GILLNET _ TRIP GILLNET

SELECT BROAD STOCK AREA (BSA):
NOTE: CHECK ALL THAT APPLY
_ BSA 1-GULF OF MAINE
_ BSA 2-INSHORE GEORGES BANK
_ BSA 3-OFFSHORE GEORGES BANK
_ BSA 4-SOUTHERN NEW ENGLAND

SELECT SECTOR OR COMMON POOL TRIP:
_ ALL TRIPS USING MULTS DAS
_ SECTOR TRIP NOT USING MULTS DAS
NOTE: ALL VESSELS MUST SELECT AN AREA
UNDER FISHERIES PROGRAM BELOW.

SELECT FISHERIES PROGRAM:
US/CANADA WEST (A DAS) (NMS-USC/MNK)
_ AREA 4 ONLY
_ AREA 4 AND OPEN
US/CANADA EAST (NMS-USC/MNK)
_ AREA 1
 USING _ A DAS, _ B-REG, _ B-RES
_ AREA 2 (A DAS)
_ AREA 3 (A DAS)
_ AREA 5
 USING _ A DAS, _ B-REG, _ B-RES
_ AREA 6 (A DAS)
_ AREA 7
 USING _ A DAS, _ B-REG, _ B-RES
_ AREA 8 (A DAS)
FLEX OPTION - ADD AREA TO YOUR
EASTERN AREA TRIP:
_ FLEX WEST (ADD AREA 4 ONLY)
_ FLEX OPEN (ADD AREA 4 AND OPEN)
NOTE: ONLY ONE FLEX PER TRIP ALLOWED.

_ ADD CONCURRENT SCALLOP DAS TRIP
 SEE DETAILS ON MACRO 19

*** Important Note:** Due to the length of the Multispecies declaration and the Boatracs restrictions on line length, there are three (3) macros that comprise this declaration. Choose from Macro 19, 20 or 21 to declare your trip based on the "Fisheries Program" that you intend to declare into. You'll notice that the Monkfish Option and Concurrent Scallop DAS Trip instructions are listed on Macro 19 only.

ATTACHMENT 5 (cont'd)

NE Multispecies Declaration Screens (3) – Boatracs

Macro 21

VESSEL ACTIVITY REPORT V12.2
NE - MULTISPECIES DECLARATION (PAGE 3)

SELECT GEAR TYPE:

TRAWL HOOK
 DAY GILLNET TRIP GILLNET

SELECT BROAD STOCK AREA (BSA):

NOTE: CHECK ALL THAT APPLY

BSA 1-GULF OF MAINE
 BSA 2-INSHORE GEORGES BANK
 BSA 3-OFFSHORE GEORGES BANK
 BSA 4-SOUTHERN NEW ENGLAND

B-DAS PROGRAM [NMS-BDP]

NOTE: APPLIES TO COMMON POOL ONLY

CHECK TO CONFIRM COMMON POOL TRIP

SELECT DAS USED:

A DAS (USE TO FLIP FROM B-DAS)
 B-REG DAS

NOTE: B-DAS MUST BE FLIPPED TO A-DAS
IF TRIP LIMIT EXCEEDED.

SELECT FISHING AREA:

OPEN ONLY
 AREA 4 ONLY
 AREA 4 AND OPEN
 AREA 2

FLEX OPTION - ADD TO YOUR EASTERN

AREA 2 TRIP:

FLEX WEST (ADD AREA 4 ONLY)
 FLEX OPEN (ADD AREA 4 AND OPEN)

NOTE: ONLY ONE FLEX PER TRIP ALLOWED

ADD CONCURRENT SCALLOP DAS TRIP
SEE DETAILS ON MACRO 19

ATTACHMENT 5 (cont'd)

Monkfish Declaration Screen – Boatracs

Macro 23

VESSEL ACTIVITY REPORT V12.4
NE - MONKFISH DECLARATION

SELECT GEAR TYPE:

TRAWL HOOK DAY GILLNET

SELECT MANAGEMENT AREA:

ENTIRE TRIP FISHED IN NFMA (MNK-NMA)
 ANY PART OF TRIP FISHED IN SFMA
(MNK-SMA)

SELECT MULTS BROAD STOCK AREA (BSA):

NOTE: CHECK ALL THAT APPLY.

MONK DAS-ONLY TRIP - NO BSA REQUIRED
 BSA 1-GULF OF MAINE
 BSA 2-INSHORE GEORGES BANK
 BSA 3-OFFSHORE GEORGES BANK
 BSA 4-SOUTHERN NEW ENGLAND

SELECT FISHERIES PROGRAM:

REGULAR ACCESS (OPEN AREA)

USING MULTS A AND/OR MONK DAS
 USING SCALLOP AND MONK DAS

US/CANADA WEST (USING MULTS A AND
MONK DAS)

AREA 4 ONLY
 AREA 4 AND OPEN

US/CANADA EAST (USING MULTS A AND
MONK DAS)

AREA 1 AREA 2 AREA 3
 AREA 5 AREA 6 AREA 7
 AREA 8

FLEX OPTION - ADD AREA TO YOUR
EASTERN AREA TRIP:

FLEX WEST (ADD AREA 4 ONLY)
 FLEX OPEN (ADD AREA 4 AND OPEN)

NOTE: ONLY ONE FLEX PER TRIP ALLOWED
OFFSHORE AREA ACCESS

(PERMIT CAT F ONLY)

USING MULTS A AND/OR MONK DAS
 USING SCALLOP AND MONK DAS

CA-1 HOOK GEAR HADDOCK SAP

USING MULTS A AND MONK DAS

ADD CONCURRENT SCALLOP DAS TRIP:

CHARGE SCALLOP DAS TO MONKFISH TRIP

NOTE: TRAWL ONLY. YOU MUST ALSO
DECLARE SCALLOP DAS TRIP USING IVR.

ATTACHMENT 5 (cont'd)

Multispecies Catch Report – Boatracs*

Macro 35

MULTISPECIES CATCH REPORT V6

VTR SERIAL NUMBER: _____

DATE FISH CAUGHT: MONTH (01-12)____
DAY (01-31)____

STATISTICAL AREA: _____

SPECIES KEPT	GOM	IN-GB	OFF-GB	SNE/MA
=====	=====	=====	=====	=====
COD	_____	_____	_____	_____
YELLOWTAIL	_____	_____	_____	_____
POLLOCK	_____	_____	_____	_____
WHITE HAKE	_____	_____	_____	_____
WINTER FLDR	_____	_____	_____	_____
WITCH FLDR	_____	_____	_____	_____
HADDOCK	_____	_____	_____	_____
WINDOWPANE	_____	_____	_____	_____
REDFISH	_____	_____	_____	_____
PLAICE	_____	_____	_____	_____
HALIBUT	_____	_____	_____	_____
ALL FISH	_____	_____	_____	_____

NOTE: FOR 'ALL FISH KEPT', INCLUDE
TOTAL LBS OF ALL GROUND FISH AND
NON-GROUND FISH.

RETURN CONFIRMATION REQUESTED -> _

THIS REPORT IS TO BE USED FOR ALL
GROUND FISH TRIPS, INCLUDING TRIPS INTO
MULTIPLE BROAD STOCK AREAS (BSA), US/
CANADA MANAGEMENT AREA, REGULAR B-DAS
PROGRAM, SPECIAL ACCESS PROGRAMS.

FOR MULTIPLE BSA TRIPS: SUBMIT ONE
TRIP-LEVEL REPORT BEFORE CROSSING THE
VMS DEMARCATION LINE ON RETURN TRIP.
FOR SINGLE BSA TRIPS: SUBMIT ONLY THE
VTR SERIAL NUMBER AND NO OTHER INFO
BEFORE CROSSING THE VMS DEMARCATION
LINE ON RETURN TRIP. FOR US/CA, B-DAS
AND/OR SAP TRIPS: SUBMIT DAILY BY 9AM
THE DAY AFTER THE FISH WERE CAUGHT.

IMPORTANT: REPORT SPECIES IN LBS KEPT.
YOU MUST INCLUDE A 'ZERO' IN THOSE
SPACES ABOVE IN WHICH NO FISH WERE
KEPT. VTR SERIAL NUMBER MUST BE THE
SAME AS REPORTED TO THE DEALER. IF YOU
USE MULTIPLE VTR PAGES THIS TRIP,
RECORD THE SERIAL NUMBER FROM THE
FIRST VTR PAGE USED.

* **Important Note:** Boatracs has added a new feature with this software release. All Boatracs VMS forms now include the line "Return Confirmation Requested _" following the data entry fields. Enter an 'N' (no confirmation requested) or "Y" (confirmation requested) in this block in order to send the form.

ATTACHMENT 5 (cont'd)

Sector Trip Start and Sector Trip End Hail - Boatracs

**Macro 44
(Sector Trip Start Hail)**

SECTOR TRIP START HAIL V6

VESSEL PERMIT NUMBER: _____
VTR SERIAL NUMBER: _____
LANDING STATE (ABBREVIATED): _____
LANDING PORT CITY: _____
ESTIMATED ARRIVAL: _____ (MMDDHHMI)
ESTIMATED OFFLOAD: _____ (MMDDHHMI)
(PROVIDE ONLY FOR TRIPS <6 HRS OR IF
FISHING WITHIN 6 HRS OF OFFLOAD PORT)
RETURN CONFIRMATION REQUESTED -> _

THIS REPORT MAY BE USED BY ANY SECTOR
VESSEL TO SATISFY THE HAIL
REQUIREMENTS FOR ALL GROUND FISH TRIPS.

**Macro 45
(Sector Trip End Hail)**

SECTOR TRIP END HAIL V6

VESSEL PERMIT NUMBER: _____
VTR SERIAL NUMBER: _____
LANDING PORT STATE: _____ (ABBREVIATED)
CITY: _____
DEALER: _____
ESTIMATED ARRIVAL: _____ (MMDDHHMI)
ESTIMATED OFFLOAD: _____ (MMDDHHMI)
2ND OFFLOAD STATE: _____ (ABBREVIATED)
PORT CITY: _____
TOTAL GROUND FISH KEPT: _____ (LBS)
TOTAL NON-GROUND FISH KEPT: _____ (LBS)
RETURN CONFIRMATION REQUESTED -> _

THIS REPORT MAY BE USED BY ANY SECTOR
VESSEL FOLLOWING THE SUBMISSION OF A
TRIP START HAIL. THIS REPORT MUST BE
SENT 6 HOURS BEFORE ARRIVAL. IF
FISHING ENDS LESS THAN 6 HOURS BEFORE
LANDING, THE REPORT MUST BE SENT
IMMEDIATELY UPON LEAVING THE FISHING
GROUNDS.

Restricted Gear Area Notification - Boatracs

**Macro 46
(Western Georges Bank RGA)**

GB RESTRICTED GEAR NOTIFICATION V6
WESTERN GEORGES BANK MULTISPECIES RGA

RETURN CONFIRMATION REQUESTED -> _

COMMON POOL VESSELS DECLARING A NE
MULTISPECIES DAS AND INTENDING TO FISH
ALL OR PART OF THEIR TRIP WITHIN AN
RGA ARE REQUIRED TO SEND THIS FORM
PRIOR TO LEAVING PORT. YOU MUST COMPLY
WITH ALL GEAR REQUIREMENTS WITHIN THE
RGA. OTHER GEAR IS NOT ALLOWED ONBOARD
WHEN FISHING PART OF A TRIP IN THE
RGA. SUBMIT THIS FORM IF YOU INTEND TO
FISH WITHIN THE WESTERN GB
MULTISPECIES RGA. YOU CAN FISH BOTH
INSIDE AND OUTSIDE THIS RGA, BUT YOU
WILL BE HELD TO THE MOST RESTRICTIVE
MEASURES DURING YOUR ENTIRE TRIP.

**Macro 47
(Southern New England RGA)**

SNE RESTRICTED GEAR NOTIFICATION V6
SOUTHERN NEW ENGLAND MULTISPECIES RGA

RETURN CONFIRMATION REQUESTED -> _

COMMON POOL VESSELS DECLARING A NE
MULTISPECIES DAS AND INTENDING TO FISH
ALL OR PART OF THEIR TRIP WITHIN AN
RGA ARE REQUIRED TO SEND THIS FORM
PRIOR TO LEAVING PORT. YOU MUST COMPLY
WITH ALL GEAR REQUIREMENTS WITHIN THE
RGA. OTHER GEAR IS NOT ALLOWED ONBOARD
WHEN FISHING PART OF A TRIP IN THE
RGA. SUBMIT THIS FORM IF YOU INTEND TO
FISH WITHIN THE SNE MULTISPECIES RGA.
YOU CAN FISH BOTH INSIDE AND OUTSIDE
THIS RGA, BUT YOU WILL BE HELD TO THE
MOST RESTRICTIVE MEASURES DURING YOUR
ENTIRE TRIP.

ATTACHMENT 5 (cont'd)

GOM Cod Trip Limit Exemption - Boatracs

Macro 42

GOM COD TRIP LIMIT EXEMPTION V6

RETURN CONFIRMATION REQUESTED -> _

NOTE: VESSELS DECLARING INTO THE US/CANADA MANAGEMENT AREA EXCLUSIVELY ARE NOT REQUIRED TO SUBMIT THIS FORM.

SUBMIT THIS FORM, PRIOR TO LEAVING PORT, IF YOU INTEND TO FISH SOUTH OF THE GULF OF MAINE - REGULATED MESH AREA (GOM RMA) AND WOULD LIKE TO BE EXEMPT FROM THE GOM COD TRIP LIMIT AND SUBJECT TO THE GEORGES BANK (GB) TRIP LIMIT INSTEAD. IF YOU SUBMIT THIS FORM YOU WILL BE SUBJECT TO THE GB COD TRIP AND CAN'T FISH IN THE GOM RMA FOR THE DURATION OF YOUR TRIP. TRANSITING IS ALLOWED PROVIDED ALL GEAR IS PROPERLY STOWED WHILE WITHIN THE GOM RMA.

ATTACHMENT 6

NE Multispecies and Monkfish Declaration Screens – Thrane*

Trip Declaration and Catch Reporting System

Trip Declaration [8.0]

Reports [6.0]

Type

Multispecies

Monkfish - SFMA

Scallop

Mults+Monk Opt.

Monkfish - NFMA

Other

Activity

Regular Access

CA-1 Hook Gear Haddock SAP

US/Canada

B-DAS Program

US/Canada (Flex)

B-DAS Program (Flex)

IMPORTANT: 'Multispecies' Declarations do not allow vessels the option to change to Monkfish DAS at sea. To preserve your option to change to Monkfish DAS, select the 'Mults+Monk Opt.' button instead.

* **Important Note:** Expanded versions of these declaration screens should be available for viewing on the VMS web page by mid-April.

Multispecies Catch Report - Thrane

Trip Declaration and Catch Reporting System

Trip Declaration [8.0]

Reports [6.0]

Type

Multispecies : Catch

Scallop : Catch

Scallop : Pre-Landing

Scallop : Broken Trip

Scallop : Comp. Trip

Herring : Pre-Landing

Cod: GOM Exemption

Sector Trip Start Hail

Sector Trip End Hail

Restricted Gear Area Not.

Submit report for all Groundfish Trips: [Click for full instructions...](#)

Date Fish Caught: / Vessel Trip Report Serial #: Stat. Area

Species	GOM	IN GB	OFF GB	SNE/MA		GOM	IN GB	OFF GB	SNE/MA
Cod	<input type="text" value="0"/>	<input type="text" value="0"/>	<input type="text" value="0"/>	<input type="text" value="0"/>	Yellowtail	<input type="text" value="0"/>	<input type="text" value="0"/>	<input type="text" value="0"/>	<input type="text" value="0"/>
Pollock	<input type="text" value="0"/>	<input type="text" value="0"/>	<input type="text" value="0"/>	<input type="text" value="0"/>	White Hake	<input type="text" value="0"/>	<input type="text" value="0"/>	<input type="text" value="0"/>	<input type="text" value="0"/>
Winter Flndr	<input type="text" value="0"/>	<input type="text" value="0"/>	<input type="text" value="0"/>	<input type="text" value="0"/>	Witch Flndr	<input type="text" value="0"/>	<input type="text" value="0"/>	<input type="text" value="0"/>	<input type="text" value="0"/>
Haddock	<input type="text" value="0"/>	<input type="text" value="0"/>	<input type="text" value="0"/>	<input type="text" value="0"/>	Window Pane	<input type="text" value="0"/>	<input type="text" value="0"/>	<input type="text" value="0"/>	<input type="text" value="0"/>
Redfish	<input type="text" value="0"/>	<input type="text" value="0"/>	<input type="text" value="0"/>	<input type="text" value="0"/>	Plaice	<input type="text" value="0"/>	<input type="text" value="0"/>	<input type="text" value="0"/>	<input type="text" value="0"/>
Halibut	<input type="text" value="0"/>	<input type="text" value="0"/>	<input type="text" value="0"/>	<input type="text" value="0"/>	All Fish Kept	<input type="text" value="0"/>	<input type="text" value="0"/>	<input type="text" value="0"/>	<input type="text" value="0"/>

Note: For 'All Fish Kept', include total of all groundfish and non-groundfish.

ATTACHMENT 6 (cont'd)

Sector Trip Start Hail - Thrane

Trip Declaration and Catch Reporting System

Trip Declaration [8.0]	Reports [6.0]
------------------------	---------------

Type

Multispecies : Catch	Scallop : Catch	Scallop : Pre-Landing	Scallop : Broken Trip
Scallop : Comp. Trip	Herring : Pre-Landing	Cod: GOM Exemption	Sector Trip Start Hail
Sector Trip End Hail	Restricted Gear Area Not.		

Sector Trip Start Hail:

This report may be used by any sector vessel to satisfy the hail requirements for all groundfish trips.

Vessel Permit Number: Landing Port City:

Vessel Trip Report (VTR) Serial #: Landing State (abbreviated):

Estimated Arrival: / / :

Estimated Offload: / / :

Provide Estimated Offload only for trips <6 hrs or if fishing within 6 hrs of offload port

ATTACHMENT 6 (cont'd)

Sector Trip End Hail - Thrane

Trip Declaration and Catch Reporting System

Trip Declaration [8.0]	Reports [6.0]
------------------------	---------------

Type

Multispecies : Catch	Scallop : Catch	Scallop : Pre-Landing	Scallop : Broken Trip
Scallop : Comp. Trip	Herring : Pre-Landing	Cod: GOM Exemption	Sector Trip Start Hail
Sector Trip End Hail	Restricted Gear Area Not.		

Sector Trip End Hail:
This report may be used by any sector vessel following the submission of a Trip Start Hail. This report must be sent 6 hours before arrival. If fishing ends less than 6 hours before landing, the report must be sent immediately upon leaving the fishing grounds.

Vessel Trip Report Serial # (Logbook Page):

Vessel Permit Number: Landing Port City: Landing State:

Dealer: 2nd Offload Port City: 2nd Offload State:

Total Groundfish Kept: lbs. Total Non-Groundfish Kept: lbs.

Estimated Offload: Month / Day / 00 : 00

Estimated Arrival: Month / Day / 00 : 00

ATTACHMENT 6 (cont'd)

Restricted Gear Area Notification - Thrane

Trip Declaration and Catch Reporting System

Trip Declaration [8.0] Reports [6.0]

Type

Multispecies : Catch	Scallop : Catch	Scallop : Pre-Landing	Scallop : Broken Trip
Scallop : Comp. Trip	Herring : Pre-Landing	Cod: GOM Exemption	Sector Trip Start Hail
Sector Trip End Hail	Restricted Gear Area Not.		

Western George's Bank (GB) Multispecies RGA or Southern New England (SNE) Multispecies RGA?

Please Choose Area

Restricted Gear Area Notification:
Common Pool vessels declaring a NE multispecies DAS and intending to fish all or part of their trip within an RGA are required to send this form prior to leaving port. You must comply with all gear requirements within the RGA. Other gear is not allowed onboard when fishing part of a trip in the RGA.

Western George's Bank
Submit this form if you intend to fish within the Western GB Multispecies RGA. You can fish both inside and outside this RGA, but you will be held to the most restrictive measures during your entire trip.

Southern New England
Submit this form if you intend to fish within the SNE Multispecies RGA. You can fish both inside and outside this RGA, but you will be held to the most restrictive measures during your entire trip.

ATTACHMENT 6 (cont'd)

GOM Cod Trip Limit Exemption - Thrane

Trip Declaration and Catch Reporting System

Trip Declaration [8.0]	Reports [6.0]
------------------------	---------------

Type

Multispecies : Catch	Scallop : Catch	Scallop : Pre-Landing	Scallop : Broken Trip
Scallop : Comp. Trip	Herring : Pre-Landing	Cod: GOM Exemption	Sector Trip Start Hail
Sector Trip End Hail	Restricted Gear Area Not.		

Gulf of Maine Cod Trip Limit Exemption:

Note: Vessels declaring into the US/Canada Management Area exclusively are not required to submit this form.

Submit this report prior to leaving port if you intend to fish south of the *Gulf of Maine - Regulated Mesh Area (GOM RMA)* and would like to be exempt from the *GOM Cod Trip Limit* and subject to the *Georges Bank (GB) Trip Limit* instead.

If you submit this report you will be subject to the GB Cod Trip Limit and cannot fish in the GOM RMA for the duration of your trip.

Transiting is allowed provided all gear is properly stowed while within the GOM RMA.

NOTE: You must submit this report before you leave Port.

Send Report