

ON SEVEN




7th Plan supply curve review and regional tool

Brown Bag
March 5, 2014

BACKGROUND



2013-2014

6 PLAN

-  DATA COLLECTION
-  DATA ANALYSIS
-  MARKET RESEARCH

JAN-JUNE, 2015

7 PLAN

-  SUPPLY CURVE REVIEW
-  WORKBOOK TOOL

WHAT ARE WE DOING

Conduct a **technical** review of draft 7th plan supply curves

Provide region with **tool** to allow for easy review and analysis of supply curves

Communicate with public power and key stakeholders

Provide the region with **information** to support effective CRAC participation by BPA, customer utilities and regional stakeholders

GOALS



UNDERSTAND
& REVIEW
TECHNICAL
DETAILS



PROVIDE
A TOOL



PRESENT
KEY
CONCEPTS

PROJECT SCOPE




- Additional layer of technical review
- Summary of results
- Coordinating closely with Council staff



-
- Will not develop or change supply curves
 - Will not provide opinion on policy decisions (ramp rates, achievable potential, etc.)

WHY WE CARE



The EE supply
curves are the
foundation for the
7th plan energy efficiency
target

HOW IT
WORKS

WHAT'S IN A SUPPLY CURVE



Per Unit
Savings



Number
of Units

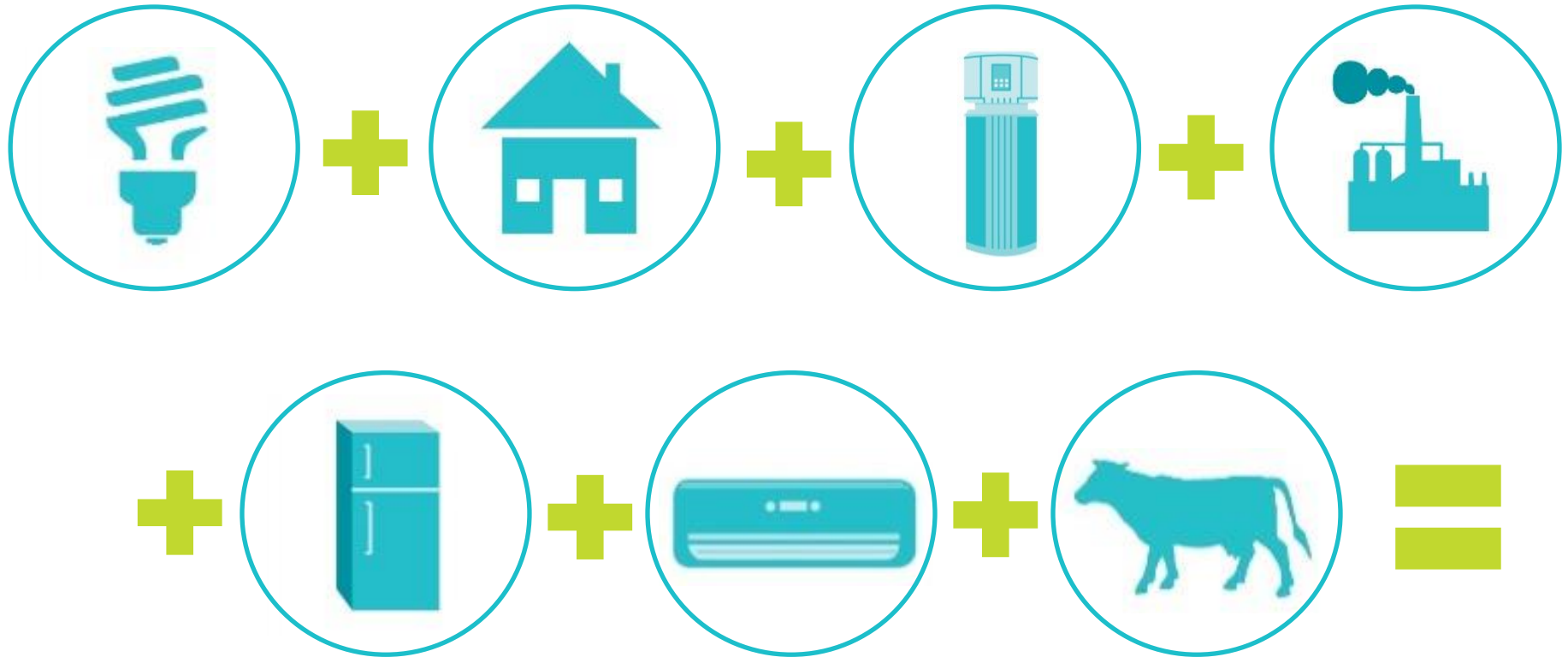


% Available
Per Year



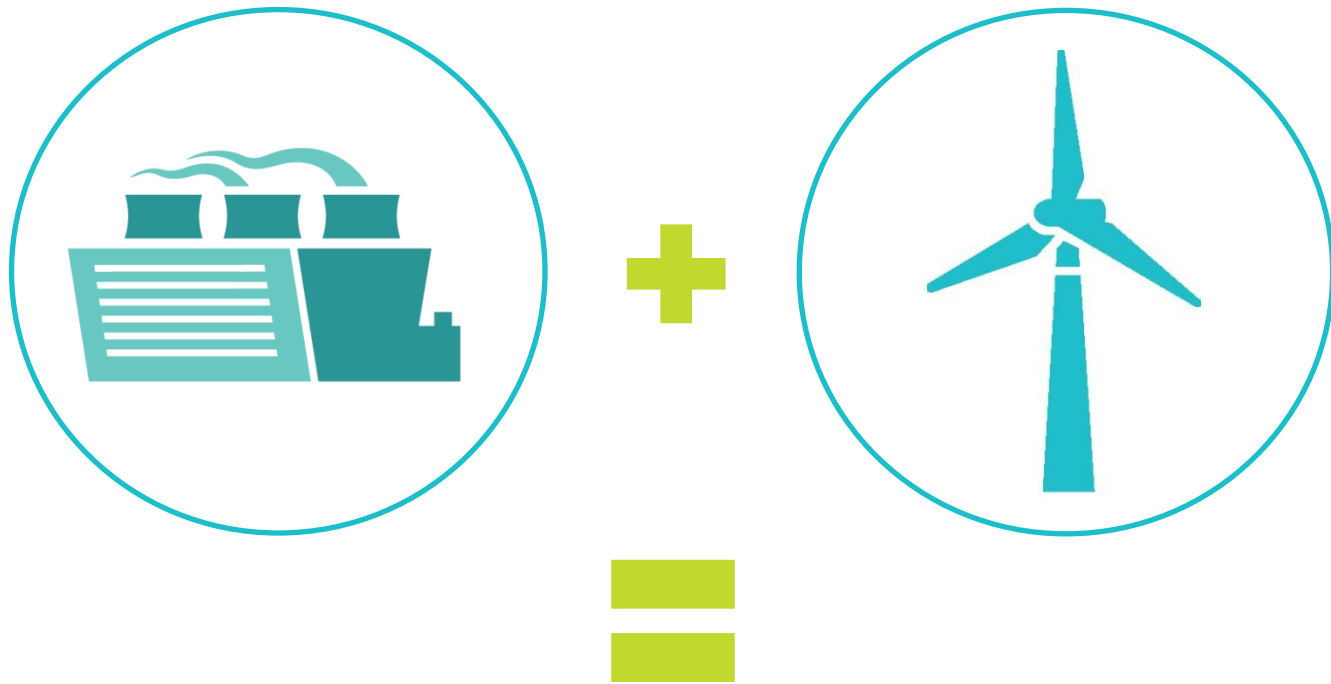
Technology-Level Savings Potential

BUILDING THE 7TH PLAN TARGETS



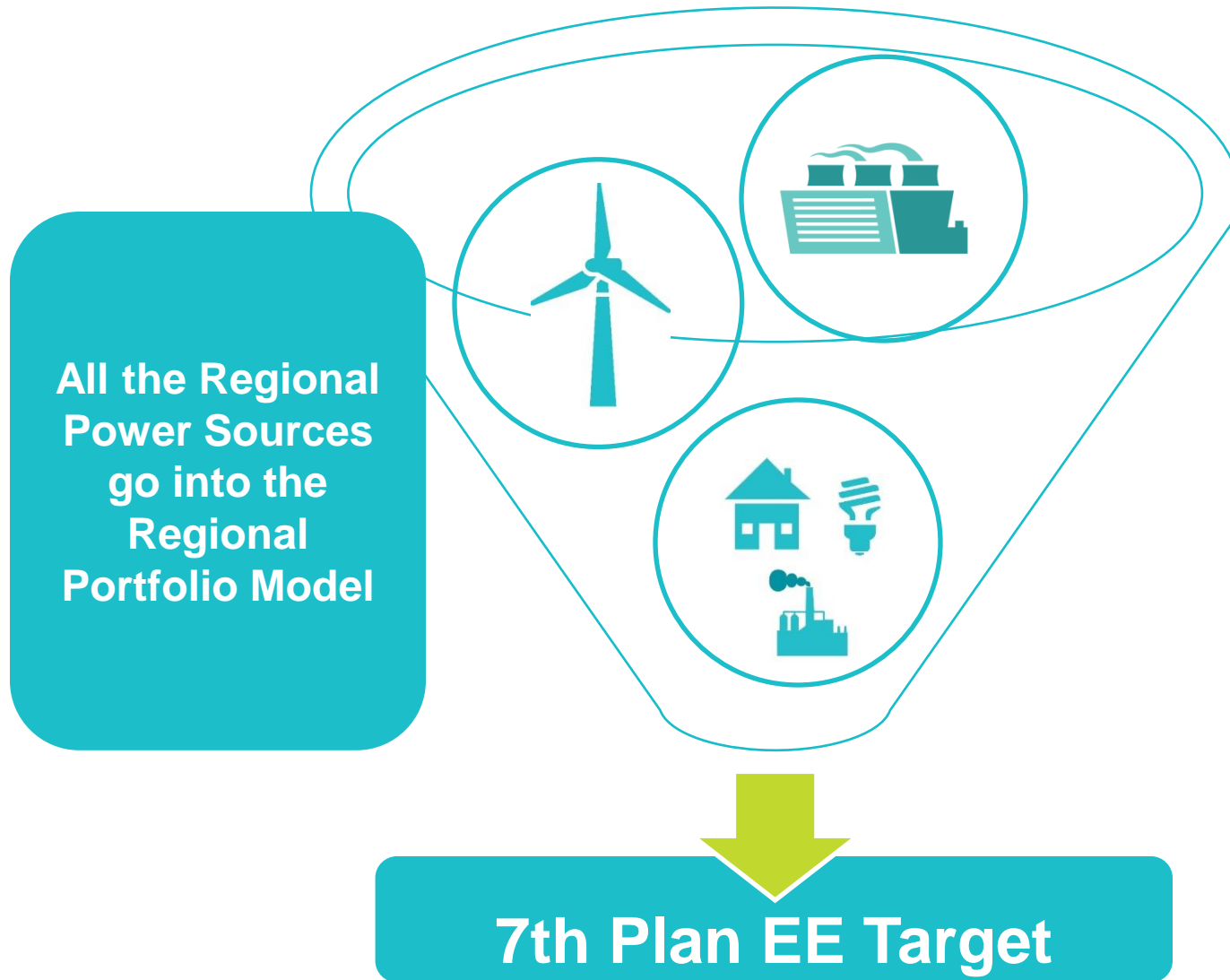
Regional EE Savings Potential

BUILDING THE 7TH PLAN TARGETS



**Power Potential
from other sources**

BUILDING THE 7TH PLAN TARGETS



TECHNICAL REVIEW

SUPPLY CURVE REVIEW

60-80 Supply curve workbooks



Each workbook includes:

Engineering Calculations

Regional Characteristics

Achievability Assumptions

WHAT ARE WE LOOKING FOR?

PROGRAMS

Program experience

Future opportunity

Resource considerations

PLANNING

Comparison to actuals

Measure readiness

Achievability and ramp rates

Cost effectiveness

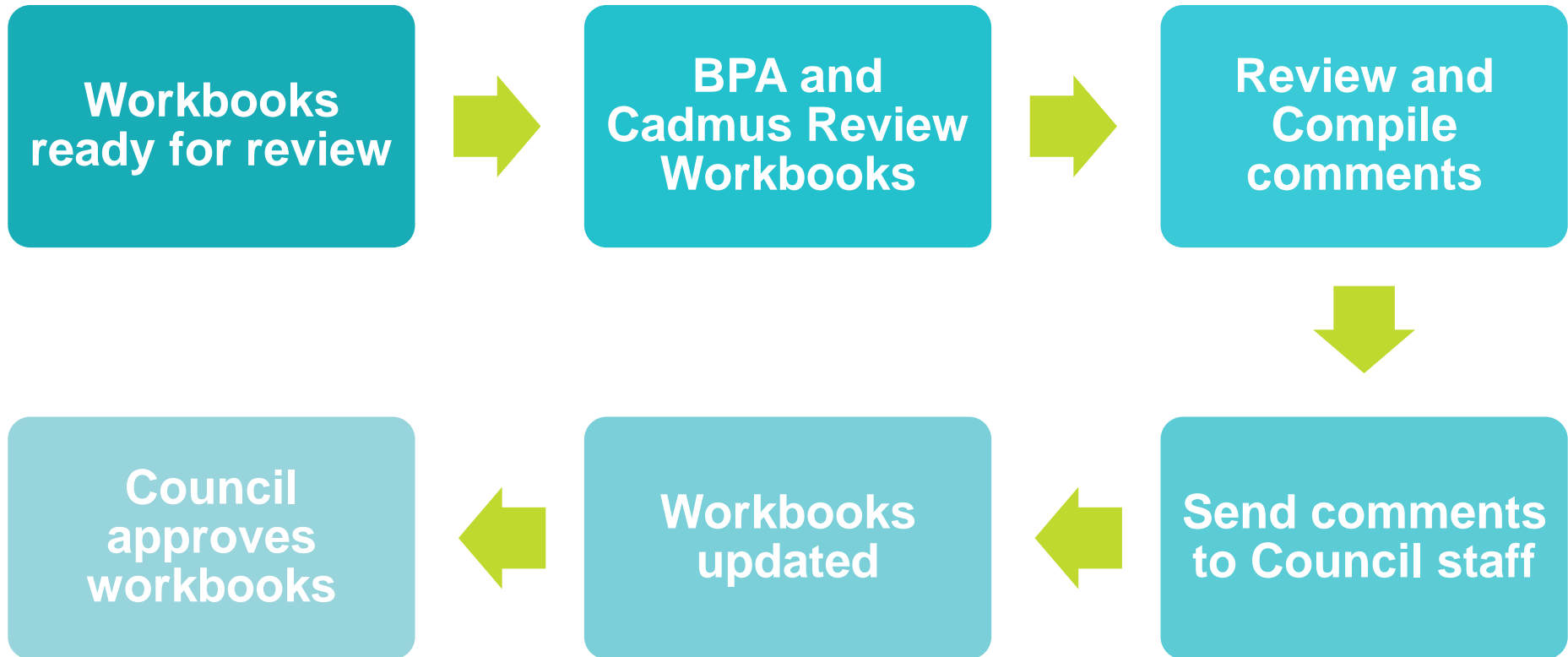
ENGINEERING

Savings and cost calculations

Field experience

Engineering assumptions

PROCESS



TIMELINE



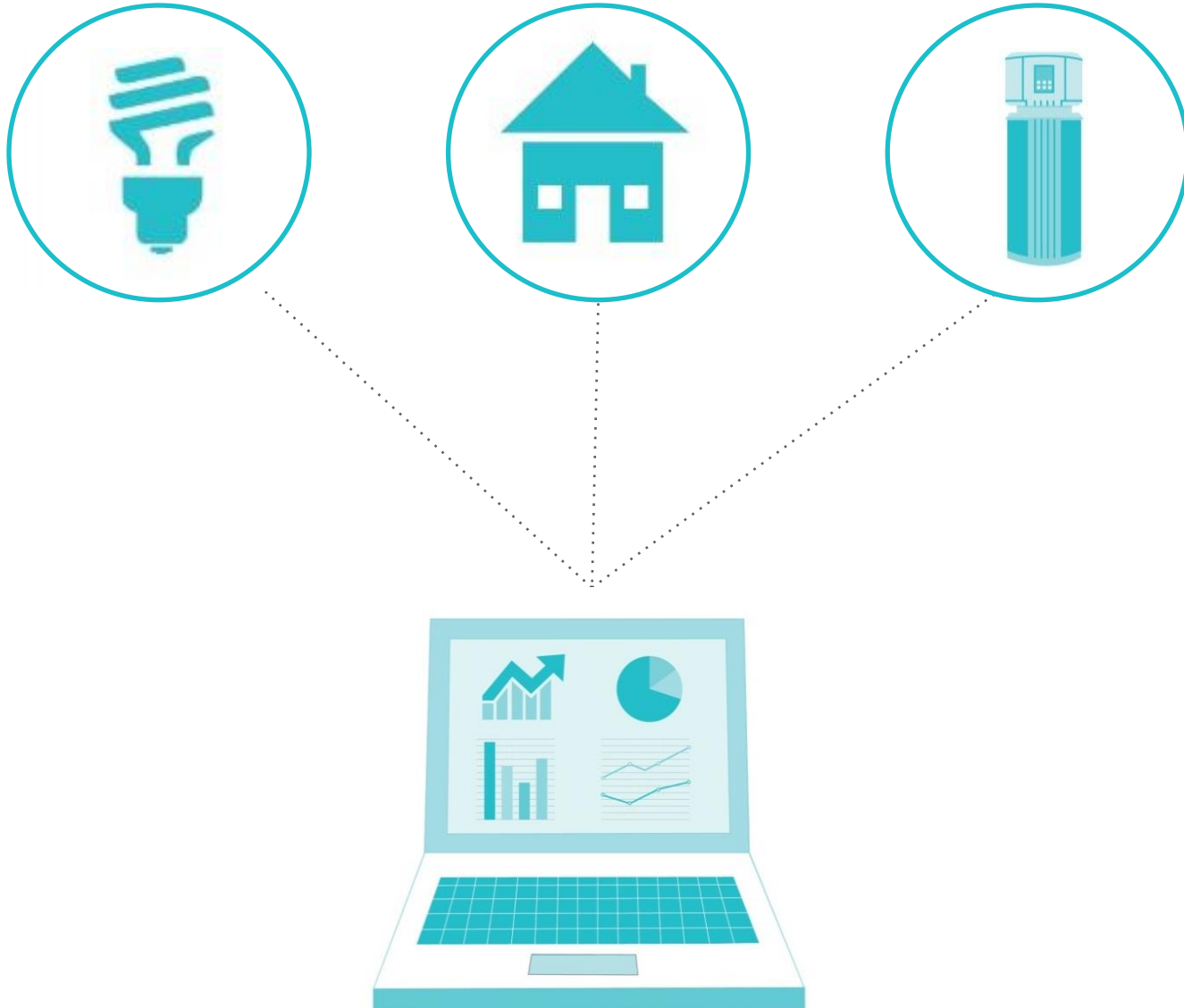
January 23

March 6



DEVELOPING A REGIONAL TOOL

FROM MANY TO ONE



TOOL COMPONENTS



Instructions for internal and external use

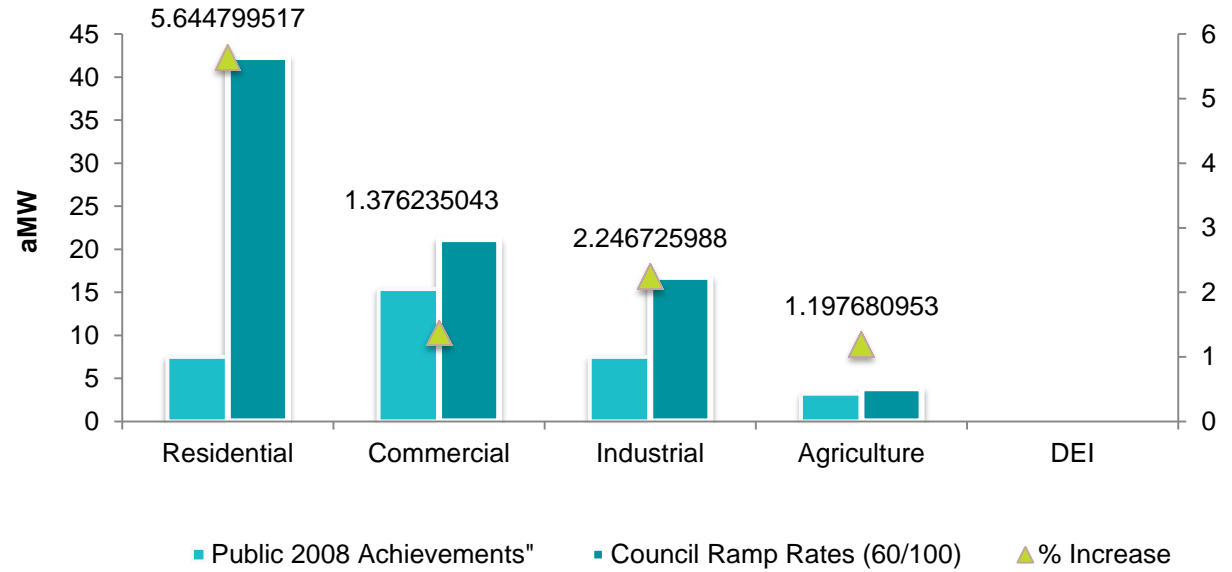


Single list of all measures and key details (unit savings, cost, potential, ramp rate)

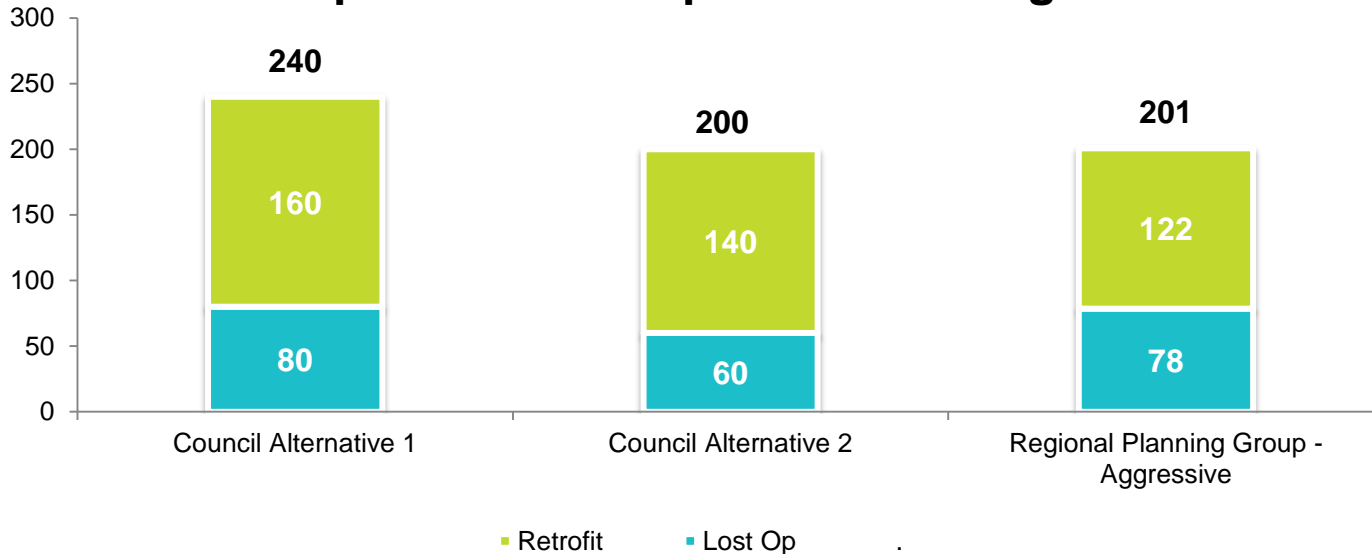


Data summary and analysis

EXAMPLE



Comparison of Ramp Rates - Average Annual



PRESENT
KEY CONCEPTS

PRESENTATIONS



Share results of
tool with region

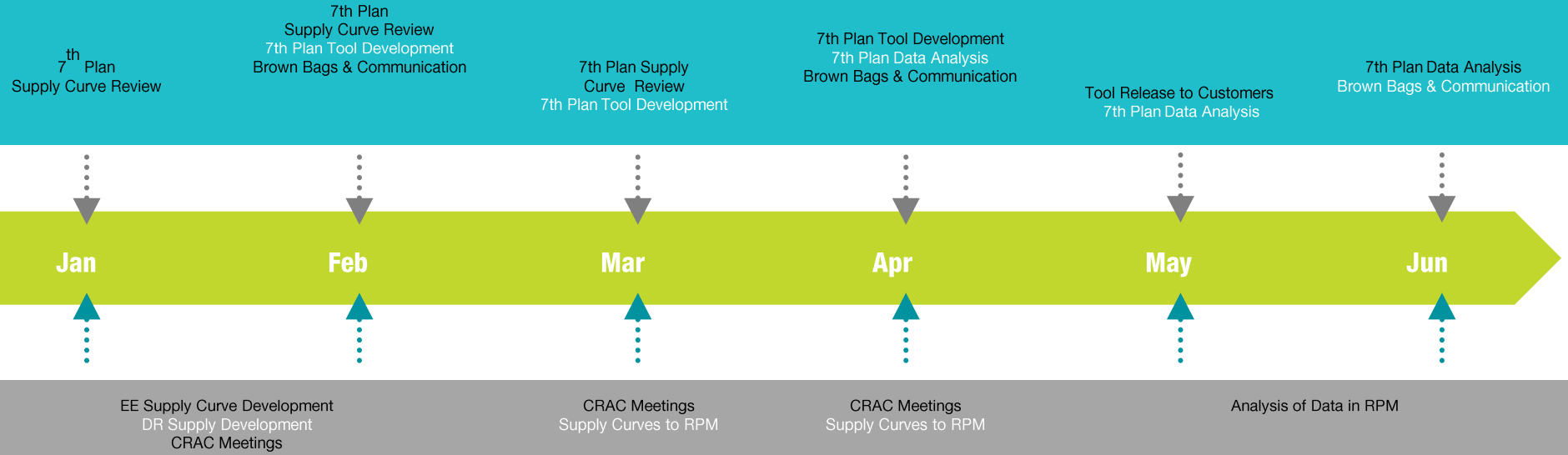
CRAC

Brown
bags

Internal

TIMELINE AND NEXT STEPS

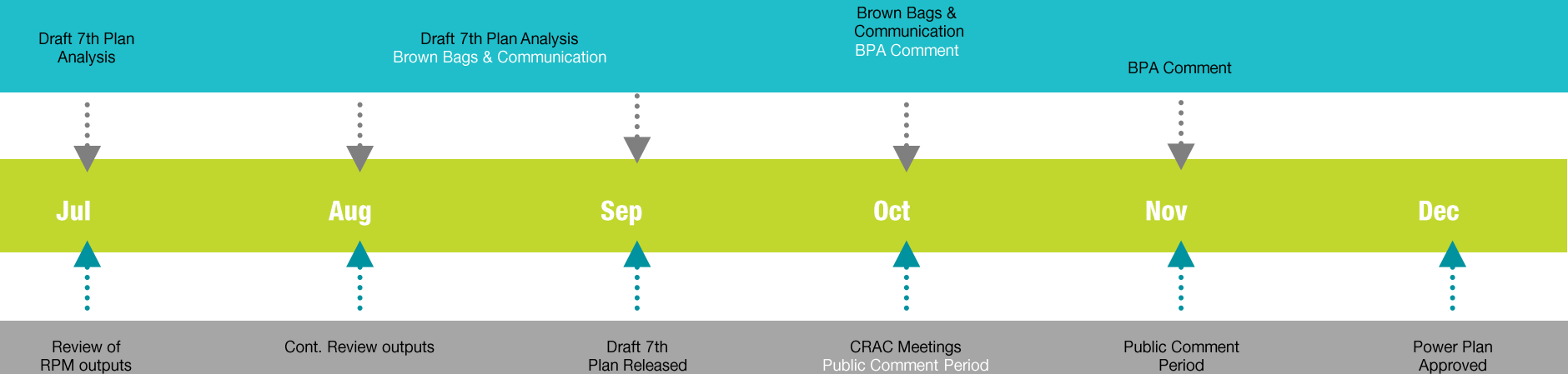
Bonneville Power Administration



Northwest Power and Conservation Council

2 0 1 5

Bonneville Power Administration



Northwest Power and Conservation Council

NEXT STEPS

Complete workbook review

Continue to Develop Website

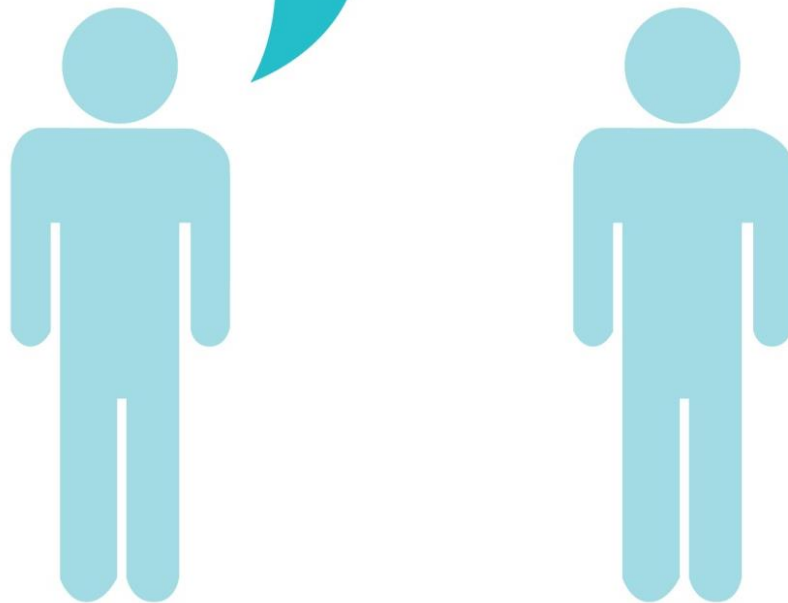
<http://www.bpa.gov/EE/Utility/toolkit/Pages/Six-Going-On-Seven.aspx>

Develop and release regional tool

Continue to engage in 7th Plan process

A teal speech bubble with rounded corners and a tail pointing towards the two figures below. The text "Questions?" is written in white, bold, sans-serif font inside the bubble.

Questions?



Danielle Walker
dngidding@bpa.gov
503-230-7314