

# Northern CVP Water Temperature Report

## December - 2016

Page	Description
1	- Mean Daily Water Temperature, Release Flow Rates and Air Temperatures with Monthly Averages
2	- Redding 10-Day Forecasted Air Temperatures
3	- Sacramento River Mean Daily Water Temperature, Air Temperature and 10-Day Forecasted Air Temperature Plot - Water Temperature Measuring Station Details - Temperature Control Point Details
4	- Lake Shasta Isothermalbaths Plot
5	- Daily Maximum and 7DADM
x	- <a href="#">TCD Configuration</a> (External Link)



All Data in this Report is Preliminary and Subject to Change

DATE	Mean Daily Water Temperatures (°F)													Mean Daily Release (CFS)			Mean Daily Air Temperatures (°F)			
	TCD <sup>1</sup>	SHD	SPP <sup>1</sup>	KWK	SAC	CCR	BSF <sup>2</sup>	JLF	BND	RDB	IGO	LWS	NFH <sup>3</sup>	Shasta Generation	Spring Creek P.P.	Keswick Total	RDD	BSF	RDB	LWS
Nov	50.8	50.0	57.7	51.5	52.0	52.6	53.9	54.9	55.4	56.7	56.6	51.6	-	7826	375	8378	75.9	70.1	71.7	63.9
12/01	53.2	52.5	55.1	52.0	51.8	51.6	50.7	50.3	50.2	50.1	51.4	47.1	45.7	4122	14	4816	51.0	47.6	50.3	37.5
12/02	52.9	52.5	54.6	51.8	51.6	51.6	50.6	50.1	49.8	49.6	51.3	46.5	44.7	4181	293	4832	51.0	47.3	49.2	35.4
12/03	52.8	52.2	55.0	51.8	51.7	51.8	50.9	50.3	50.1	49.8	51.5	46.5	44.0	4630	14	4842	53.0	45.8	49.6	37.1
12/04	52.7	52.2	54.9	51.9	51.8	51.9	51.1	50.6	50.4	50.0	51.6	46.7	44.8	4570	14	4840	46.5	43.0	43.0	43.4
12/05	52.6	52.1	54.5	51.7	51.4	51.4	50.7	50.2	50.1	49.8	50.8	46.3	44.6	4123	14	4841	44.0	39.6	42.4	36.0
12/06	52.7	52.1	53.9	51.5	51.2	51.2	50.1	49.4	49.0	48.8	50.3	45.3	43.3	4054	62	4841	41.5	36.5	38.1	34.3
12/07	52.5	52.1	53.3	51.1	50.6	50.4	49.4	48.7	48.5	48.1	50.0	44.8	41.2	4088	220	4838	40.5	34.8	37.1	30.7
12/08	52.3	51.9	53.0	51.2	50.8	50.4	48.5	48.3	48.1	47.7	50.1	44.8	40.8	4979	215	4835	39.0	39.1	38.7	34.5
12/09	53.4	52.7	53.4	51.3	51.2	51.1	48.3	48.0	47.9	47.7	51.1	45.5	42.5	5086	16	4840	45.0	44.3	44.5	39.3
12/10	53.9	53.4	52.6	51.4	50.8	51.4	49.3	49.2	49.3	49.2	50.7	45.4	43.9	4720	130	4839	47.5	50.6	53.5	43.4
12/11	53.9	53.3	53.1	52.1	51.4	51.2	49.0	48.1	48.2	48.6	49.2	45.2	43.4	4126	14	4837	42.5	39.6	42.9	36.1
12/12	53.7	53.1	52.1	52.3	51.9	51.8	49.9	48.7	48.6	48.2	48.8	45.0	43.0	3453	414	4841	45.0	40.5	43.4	34.3
12/13	53.5	52.8	51.9	52.2	51.8	51.7	49.9	48.9	48.9	48.7	48.7	44.8	42.7	3964	393	4840	42.5	41.8	43.5	36.1
12/14	53.2	52.6	51.6	52.2	51.5	51.9	48.9	48.9	48.9	49.0	49.0	44.7	43.0	3960	583	4842	50.0	48.1	49.5	41.3
12/15	52.9	52.7	51.6	52.1	51.8	52.5	51.6	51.1	51.0	50.7	51.2	45.2	45.3	1657	2090	4997	51.5	54.9	55.2	46.9
12/16	52.8	52.3	51.4	51.7	51.3	51.8	50.0	49.6	49.8	50.5	48.5	44.5	44.7	2446	2161	4946	46.0	43.6	46.3	35.0
12/17	52.9	52.0	51.2	51.3	50.6	50.9	47.5	46.5	46.7	47.1	46.6	43.9	42.2	2801	1723	4889	43.5	40.0	40.1	29.5
12/18	52.7	51.8	50.8	51.0	50.4	50.6	46.8	45.6	45.6	45.4	46.6	43.5	40.8	2871	1674	4891	43.5	42.5	43.0	29.4
12/19	52.2	51.6	50.5	50.4	50.0	50.4	47.1	45.9	45.8	45.4	46.9	43.4	40.5	2656	1821	4890	41.0	36.1	38.3	31.1
12/20	51.9	51.2	50.2	50.3	50.1	50.2	47.8	46.8	46.7	46.2	47.4	43.8	41.5	3422	703	4870	45.0	40.9	43.3	35.9
12/21	52.0	51.3	49.9	50.7	50.6	50.8	49.6	49.0	48.7	48.0	47.5	43.9	42.5	7632	519	9706	58.0	51.3	54.5	35.3
12/22	51.7	50.9	49.6	50.9	50.6	51.0	49.7	49.1	49.1	49.1	46.4	43.0	41.1	7614	475	9852	47.0	42.2	47.6	31.3
12/23																				
12/24																				
12/25																				
12/26																				
12/27																				
12/28																				
12/29																				
12/30																				
12/31																				
Dec	52.8	52.2	52.5	51.5	51.1	51.3	49.4	48.8	48.7	48.5	49.3	45.0	43.0	4143	616	5308	46.1	43.2	45.2	36.1

Total CFS	91155	13562	116765
Total AF	180802	26900	231599

**Legend**

- ? = 1-9 hours of data missing (Average includes estimations)
- ! = 10 or more hours of data missing (Average not calculated)
- # = Station out of service
- ↑ = Record high air temperature
- ↓ = Record low air temperature
- ☐ = Monthly Averages

**Notes**

- <sup>1</sup> Temperatures are weighted averages based on individual penstock flow and temperature
- Highlighted cells in the TCD column indicate a TCD change was made on that day
- <sup>2</sup> Current control point (see page 3 for more details)
- <sup>3</sup> NFH is only reported in October, November and December

D A T E	Redding (RDD) Daily Air Temperatures (°F)																																					
	Actual			Forecasted																																		
	Previous Day			Current Day			1 Day			2 Days			3 Days			4 Days			5 Days			6 Days			7 Days			8 Days			9 Days			10 Days				
	↓	↑	Avg	↓	↑	Avg	↓	↑	Avg	↓	↑	Avg	↓	↑	Avg	↓	↑	Avg	↓	↑	Avg	↓	↑	Avg	↓	↑	Avg	↓	↑	Avg	↓	↑	Avg	↓	↑	Avg	↓	↑
12/01	39	55	47.0	45	56	50.5	37	59	48.0	40	65	52.5	41	59	50.0	33	53	43.0	29	48	38.5	30	51	40.5	42	51	46.5	40	55	47.5	38	56	47.0	35	56	45.5		
12/02	44	58	51.0	43	59	51.0	40	66	53.0	39	59	49.0	35	52	43.5	32	49	40.5	27	52	39.5	33	51	42.0	42	56	49.0	45	58	51.5	40	62	51.0	41	60	50.5		
12/03	42	60	51.0	41	63	52.0	40	61	50.5	38	54	46.0	33	53	43.0	30	54	42.0	35	54	44.5	40	52	46.0	40	58	49.0	36	59	47.5	40	58	49.0	42	57	49.5		
12/04	38	68	53.0	39	57	48.0	38	51	44.5	35	48	41.5	31	48	39.5	37	48	42.5	41	53	47.0	37	52	44.5	41	55	48.0	42	58	50.0	38	58	48.0	38	56	47.0		
12/05	38	55	46.5	32	53	42.5	32	49	40.5	30	49	39.5	35	50	42.5	42	52	47.0	39	50	44.5	41	48	44.5	38	58	48.0	39	55	47.0	37	56	46.5	39	57	48.0		
12/06	31	57	44.0	30	50	40.0	29	47	38.0	36	47	41.5	42	55	48.5	43	52	47.5	39	51	45.0	38	51	44.5	47	57	52.0	47	59	53.0	48	56	52.0	38	51	44.5		
12/07	29	54	41.5	34	47	40.5	36	49	42.5	43	54	48.5	42	55	48.5	38	52	45.0	39	50	44.5	42	53	47.5	49	61	55.0	50	56	53.0	42	54	48.0	36	52	44.0		
12/08	33	48	40.5	34	48	41.0	43	54	48.5	42	54	48.0	38	52	45.0	36	52	44.0	41	54	47.5	42	57	49.5	43	55	49.0	45	55	50.0	42	54	48.0	36	53	44.5		
12/09	35	43	39.0	43	51	47.0	45	49	47.0	35	52	43.5	36	51	43.5	38	52	45.0	41	54	47.5	43	55	49.0	33	50	41.5	30	47	38.5	26	50	38.0	29	54	41.5		
12/10	43	47	45.0	37	57	47.0	34	52	43.0	36	52	44.0	38	52	45.0	42	51	46.5	35	50	42.5	35	49	42.0	37	49	43.0	27	49	38.0	27	51	39.0	31	56	43.5		
12/11	37	58	47.5	32	52	42.0	36	51	43.5	38	47	42.5	42	50	46.0	44	53	48.5	34	47	40.5	34	42	38.0	33	53	43.0	34	56	45.0	37	53	45.0	37	56	46.5		
12/12	32	53	42.5	33	54	43.5	33	51	42.0	43	53	48.0	49	54	51.5	36	48	42.0	30	48	39.0	30	52	41.0	34	55	44.5	36	59	47.5	41	58	49.5	43	56	49.5		
12/13	32	58	45.0	36	52	44.0	44	56	50.0	51	54	52.5	34	50	42.0	28	48	38.0	29	50	39.5	32	53	42.5	35	58	46.5	40	60	50.0	39	59	49.0	38	58	48.0		
12/14	36	49	42.5	44	57	50.5	49	54	51.5	35	51	43.0	29	50	39.5	27	50	38.5	34	55	44.5	35	48	41.5	34	55	44.5	40	57	48.5	38	58	48.0	33	55	44.0		
12/15	44	56	50.0	47	57	52.0	36	49	42.5	29	50	39.5	27	52	39.5	33	52	42.5	34	50	42.0	36	53	44.5	36	59	47.5	35	57	46.0	36	54	45.0	35	50	42.5		
12/16	47	56	51.5	45	49	47.0	31	51	41.0	29	55	42.0	33	55	44.0	36	55	45.5	38	56	47.0	36	53	44.5	31	52	41.5	34	54	44.0	37	53	45.0	34	56	45.0		
12/17	38	54	46.0	35	49	42.0	31	53	42.0	33	56	44.5	36	57	46.5	37	58	47.5	37	53	45.0	35	51	43.0	36	57	46.5	39	59	49.0	40	60	50.0	38	58	48.0		
12/18	35	52	43.5	34	53	43.5	29	54	41.5	33	56	44.5	38	58	48.0	37	54	45.5	38	53	45.5	35	53	44.0	34	56	45.0	38	56	47.0	37	55	46.0	38	53	45.5		
12/19	34	53	43.5	28	54	41.0	33	57	45.0	37	61	49.0	35	55	45.0	37	52	44.5	37	51	44.0	34	49	41.5	36	57	46.5	34	61	47.5	40	65	52.5	41	61	51.0		
12/20	28	54	41.0	31	56	43.5	38	60	49.0	35	55	45.0	39	49	44.0	38	52	45.0	33	50	41.5	35	50	42.5	42	50	46.0	40	52	46.0	33	53	43.0	38	53	45.5		
12/21	31	59	45.0	54	59	56.5	35	56	45.5	39	50	44.5	37	48	42.5	30	48	39.0	30	51	40.5	35	52	43.5	34	55	44.5	39	54	46.5	35	56	45.5	36	57	46.5		
12/22	51	65	58.0	34	61	47.5	39	50	44.5	34	48	41.0	27	47	37.0	29	48	38.5	35	51	43.0	36	53	44.5	37	58	47.5	38	58	48.0	39	61	50.0	40	56	48.0		
12/23	33	61	47.0	44	49	46.5	34	48	41.0	29	46	37.5	30	49	39.5	33	50	41.5	36	54	45.0	36	55	45.5	32	59	45.5	36	60	48.0	38	61	49.5	38	58	48.0		
12/24																																						
12/25																																						
12/26																																						
12/27																																						
12/28																																						
12/29																																						
12/30																																						
12/31																																						

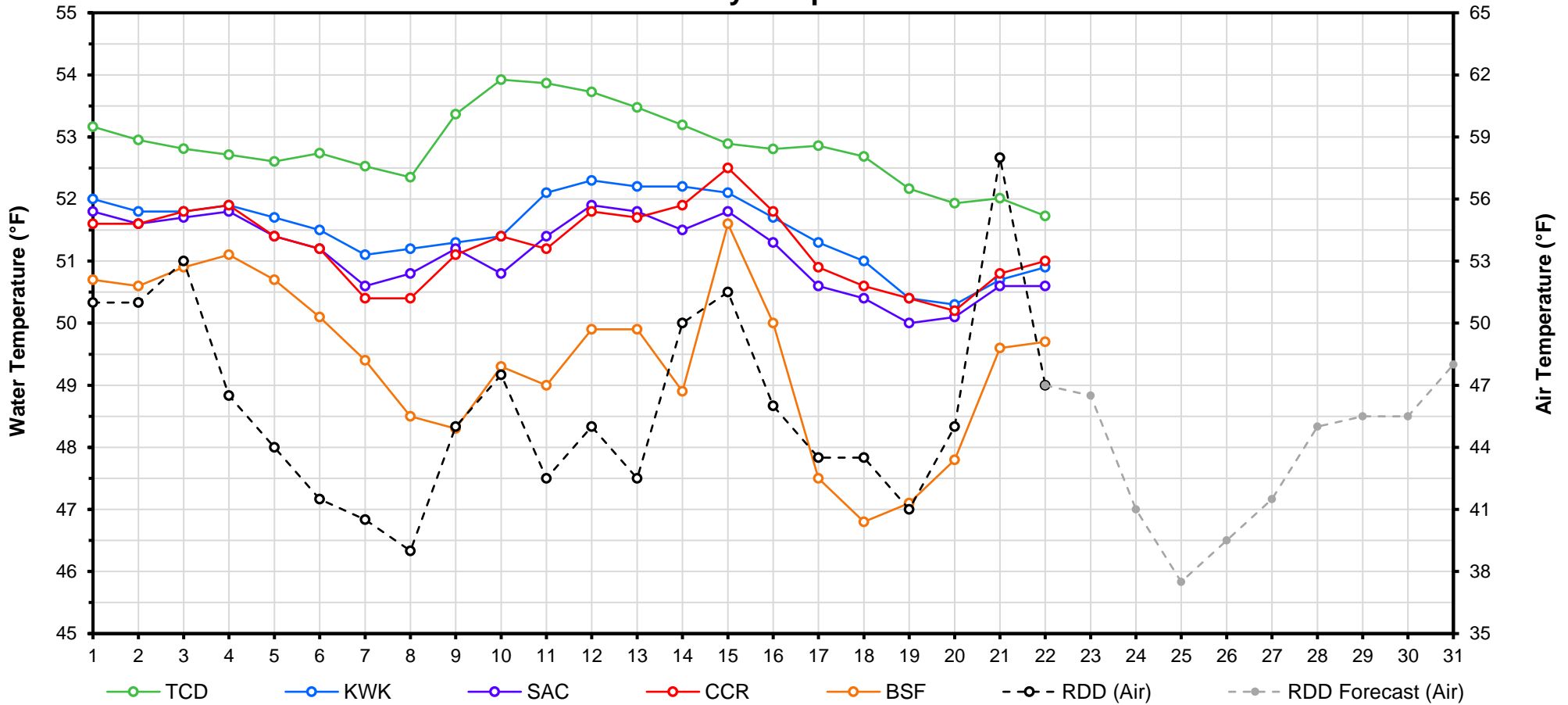
Web Links

- [10-Day Min/Max Forecast](#)
- [Previous Days Min/Max Actuals](#)

Legend

- NR = Forecasted temperatures not recorded
- 100** = Previous day actual temperatures in red and bolded indicate a record temperature for that date

# Mean Daily Temperatures



Station Details			
Code	Body of Water	Location <sup>1</sup>	CDEC Link
TCD	N/A	Shasta Power Plant	N/A
SHD	Sacramento River	0.3 miles downstream of Shasta Power Plant	<a href="#">Click Here</a>
SPP	N/A	Spring Creek Power Plant	N/A
KWK	Sacramento River	0.8 miles downstream of Keswick Dam	<a href="#">Click Here</a>
SAC	Sacramento River	4.8 miles downstream of Keswick Dam	<a href="#">Click Here</a>
CCR	Sacramento River	9.7 miles downstream of Keswick Dam	<a href="#">Click Here</a>
BSF	Sacramento River	25 miles downstream of Keswick Dam	<a href="#">Click Here</a>
JLF	Sacramento River	34 miles downstream of Keswick Dam	<a href="#">Click Here</a>
BND	Sacramento River	41 miles downstream of Keswick Dam	<a href="#">Click Here</a>
RDB	Sacramento River	58 miles downstream of Keswick Dam	<a href="#">Click Here</a>
IGO	Clear Creek	7.3 miles downstream of Whiskeytown Dam	<a href="#">Click Here</a>
LWS	Trinity River	1.1 miles downstream of Lewiston Dam	<a href="#">Click Here</a>
DGC <sup>2</sup>	Trinity River	19 miles downstream of Lewiston Dam	<a href="#">Click Here</a>
NFH <sup>3</sup>	Trinity River	38 miles downstream of Lewiston Dam	<a href="#">Click Here</a>

Temperature Control Point		
Point	Temp. (°F)	Date Range
<b>BSF</b>	<b>56.0</b>	<b>6/17 - Current</b>

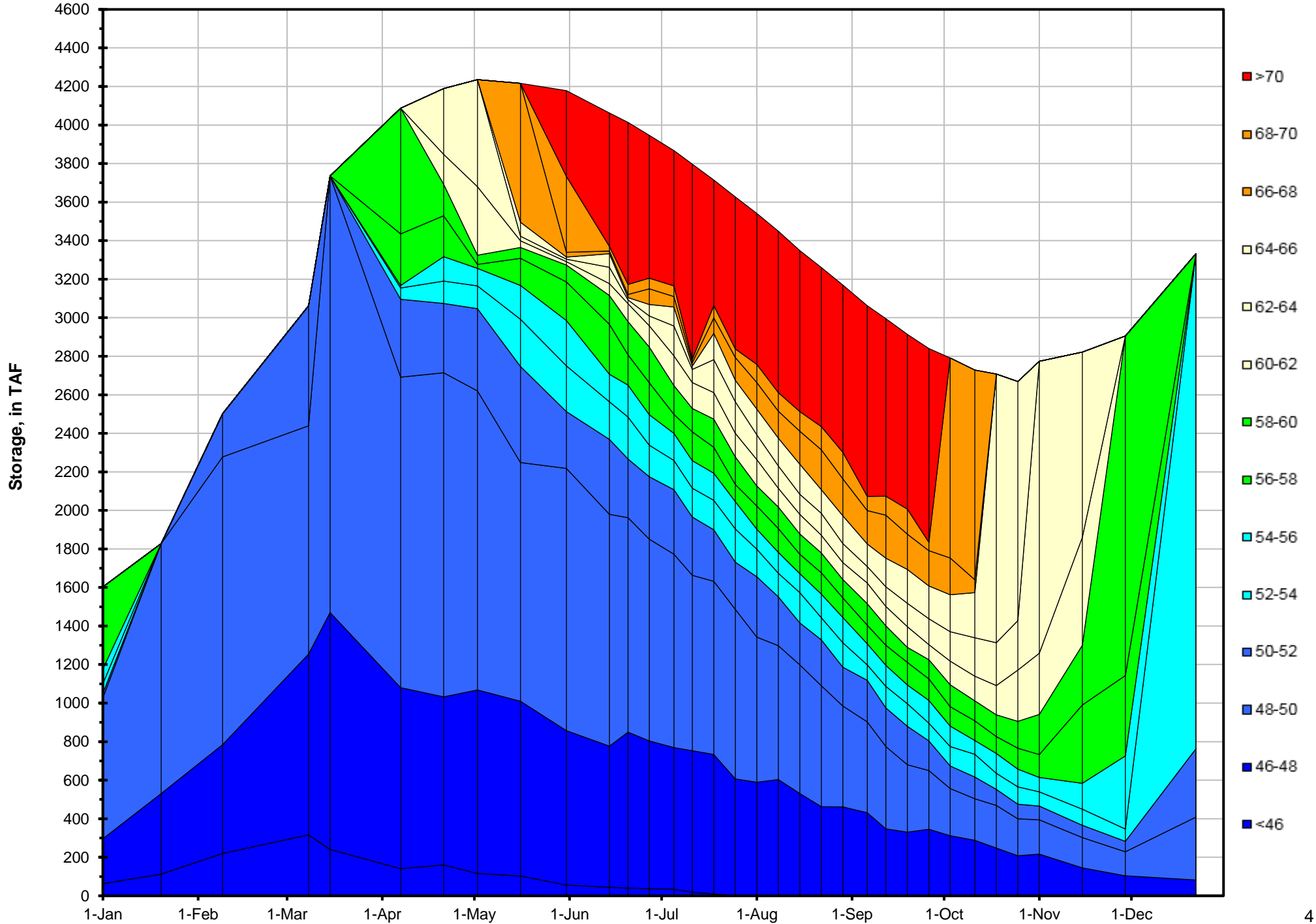
## Notes

<sup>1</sup> Distances are approximate

<sup>2</sup> DGC is only reported in September

<sup>3</sup> NFH is only reported in October, November and December

# Lake Shasta Isothermalbaths - 2016 (Water Temperature, in °F)



DATE	Daily Max		7DADM <sup>1</sup>		DAT <sup>2</sup>
	SAC	CCR	SAC	CCR	BSF
12/01	52.9	52.4	52.8	52.6	50.7
12/02	52.6	52.3	52.8	52.6	50.6
12/03	52.9	52.8	52.9	52.7	50.9
12/04	52.5	52.7	52.8	52.7	51.1
12/05	52.4	52.4	52.8	52.6	50.7
12/06	52.6	52.7	52.7	52.6	50.1
12/07	51.1	50.9	52.4	52.3	49.4
12/08	51.0	50.8	52.2	52.1	48.5
12/09	51.5	51.5	52.0	52.0	48.3
12/10	51.4	51.9	51.8	51.8	49.3
12/11	52.5	52.2	51.8	51.8	49.0
12/12	52.9	52.7	51.9	51.8	49.9
12/13	52.1	52.1	51.8	51.7	49.9
12/14	51.9	52.4	51.9	51.9	48.9
12/15	52.1	52.7	52.1	52.2	51.6
12/16	52.1	52.6	52.1	52.4	50.0
12/17	51.5	51.7	52.2	52.3	47.5
12/18	51.3	51.5	52.0	52.2	46.8
12/19	50.8	51.5	51.7	52.1	47.1
12/20	50.7	50.9	51.5	51.9	47.8
12/21	51.3	51.5	51.4	51.8	49.6
12/22	51.3	51.6	51.3	51.6	49.7
12/23					
12/24					
12/25					
12/26					
12/27					
12/28					
12/29					
12/30					
12/31					

**Notes**

<sup>1</sup> 7DADM = 7-Day Average  
Daily Maximum

<sup>2</sup> DAT = Daily Average  
Temperature

