

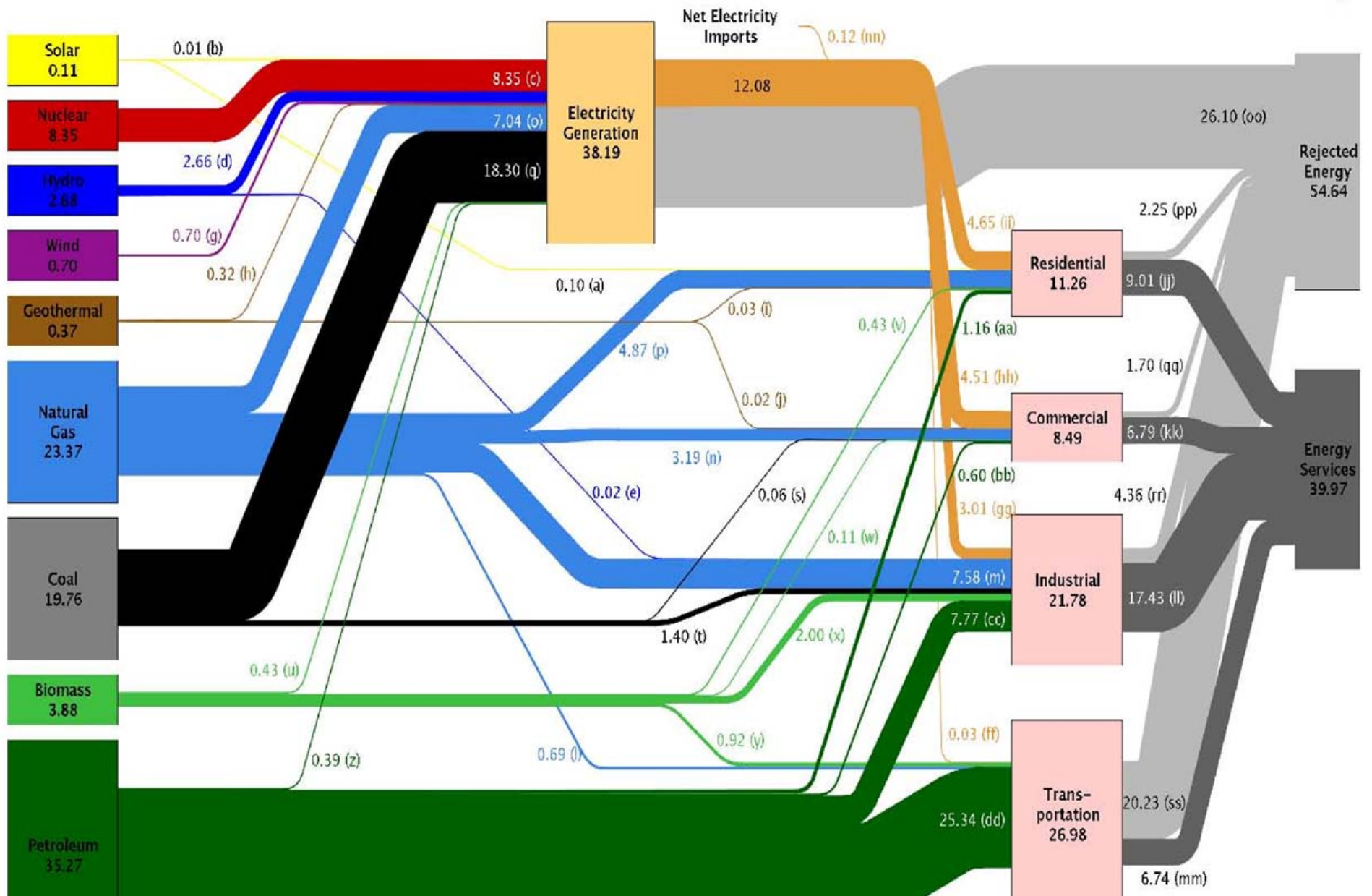


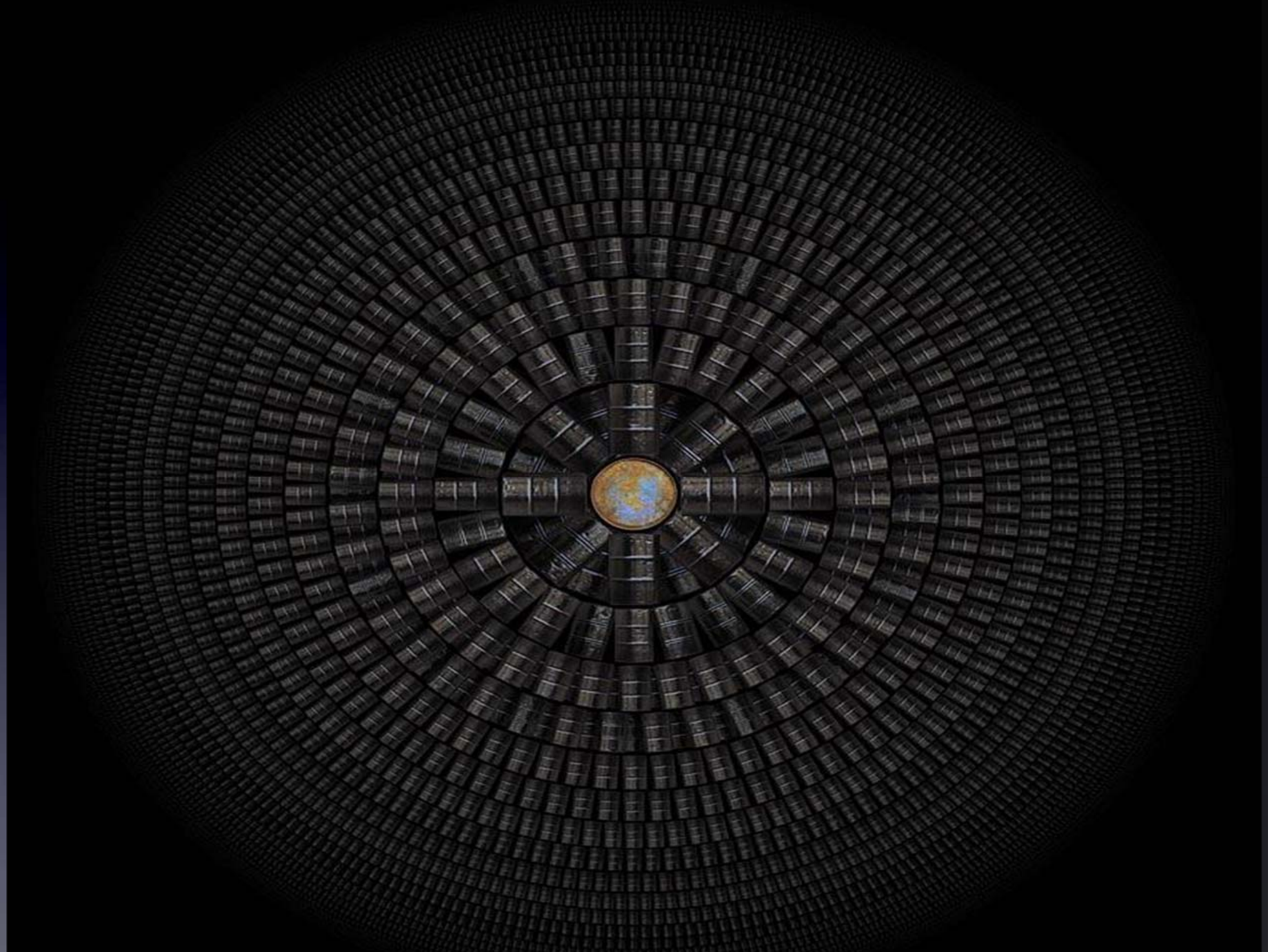
**USEA Energy Supply Forum
October 7, 2010
Washington, D.C.**

**Jon Wellinohoff
Chairman
Federal Energy Regulatory
Commission**

Current Energy Supply/Delivery Scheme

Estimated U.S. Energy Use in 2009: ~94.6 Quads





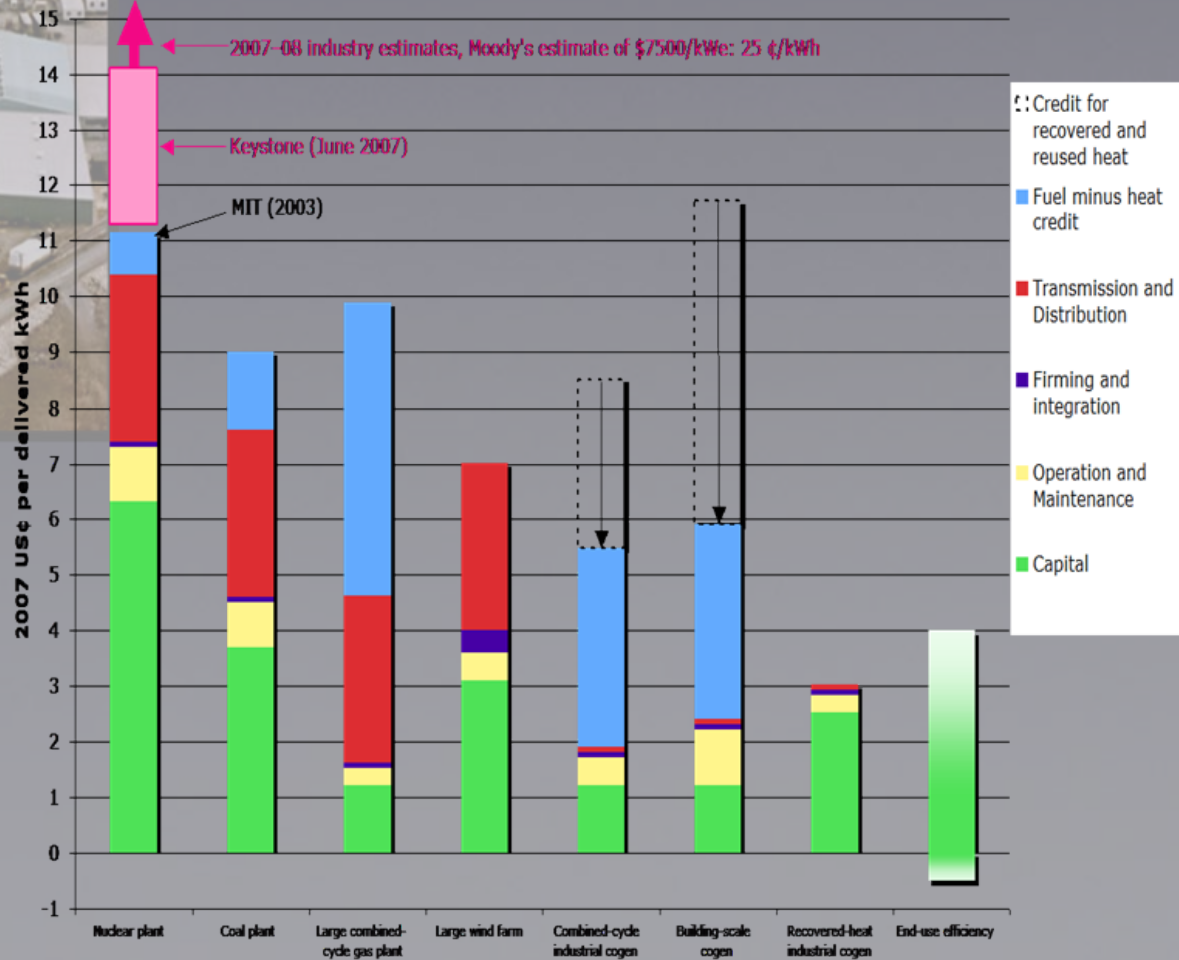




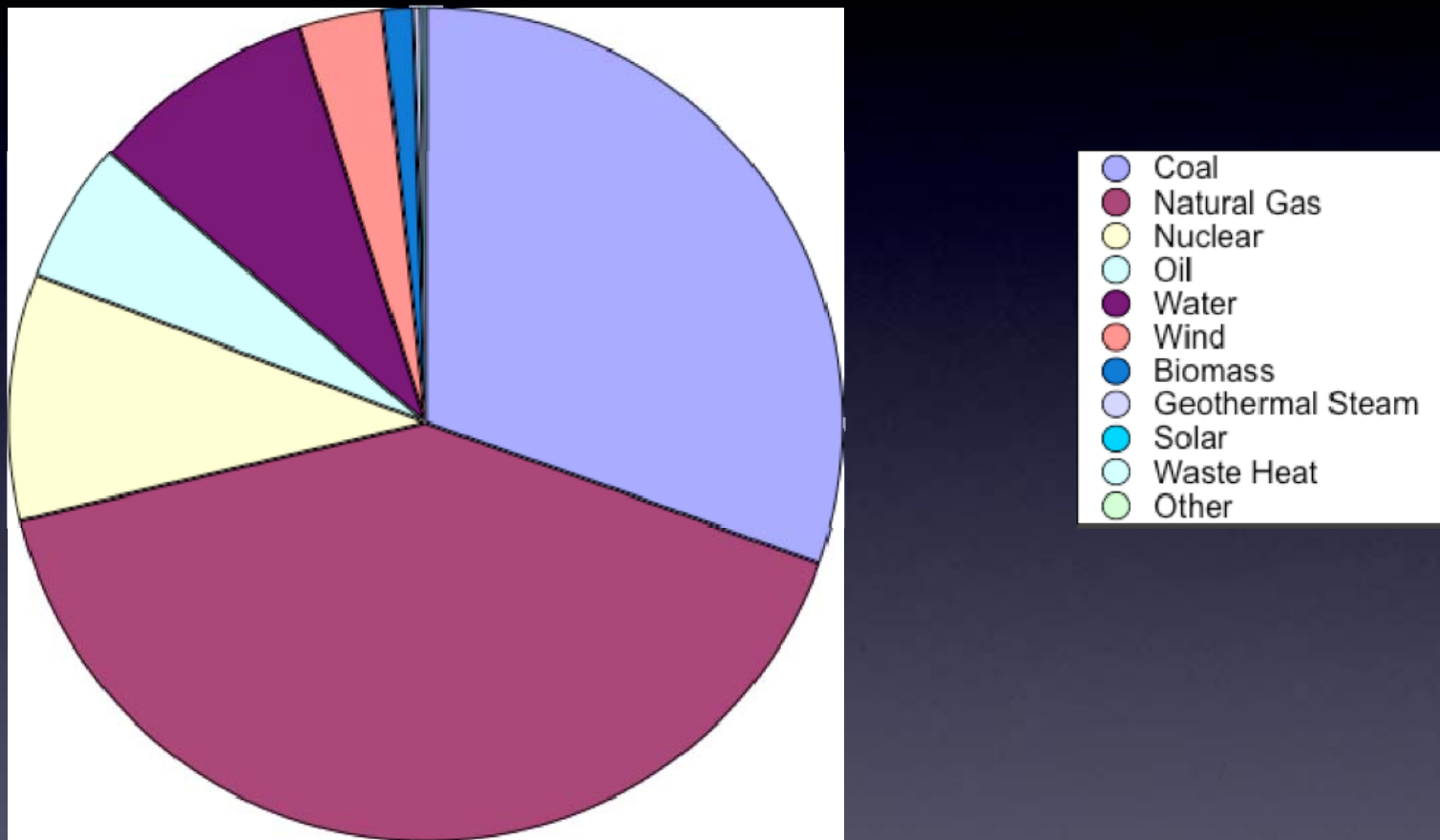




Cost of new delivered electricity

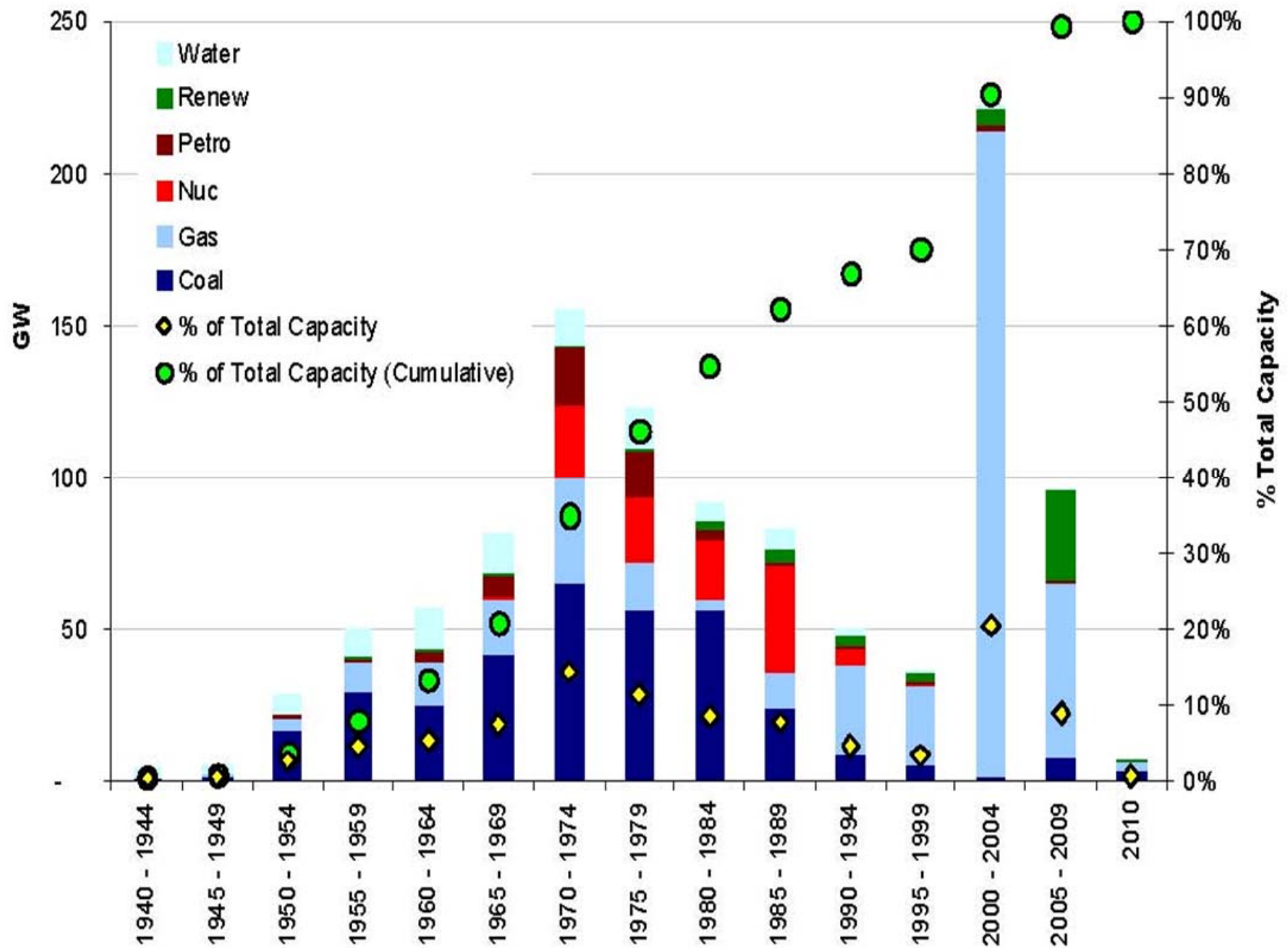


Total Installed Generation Capacity



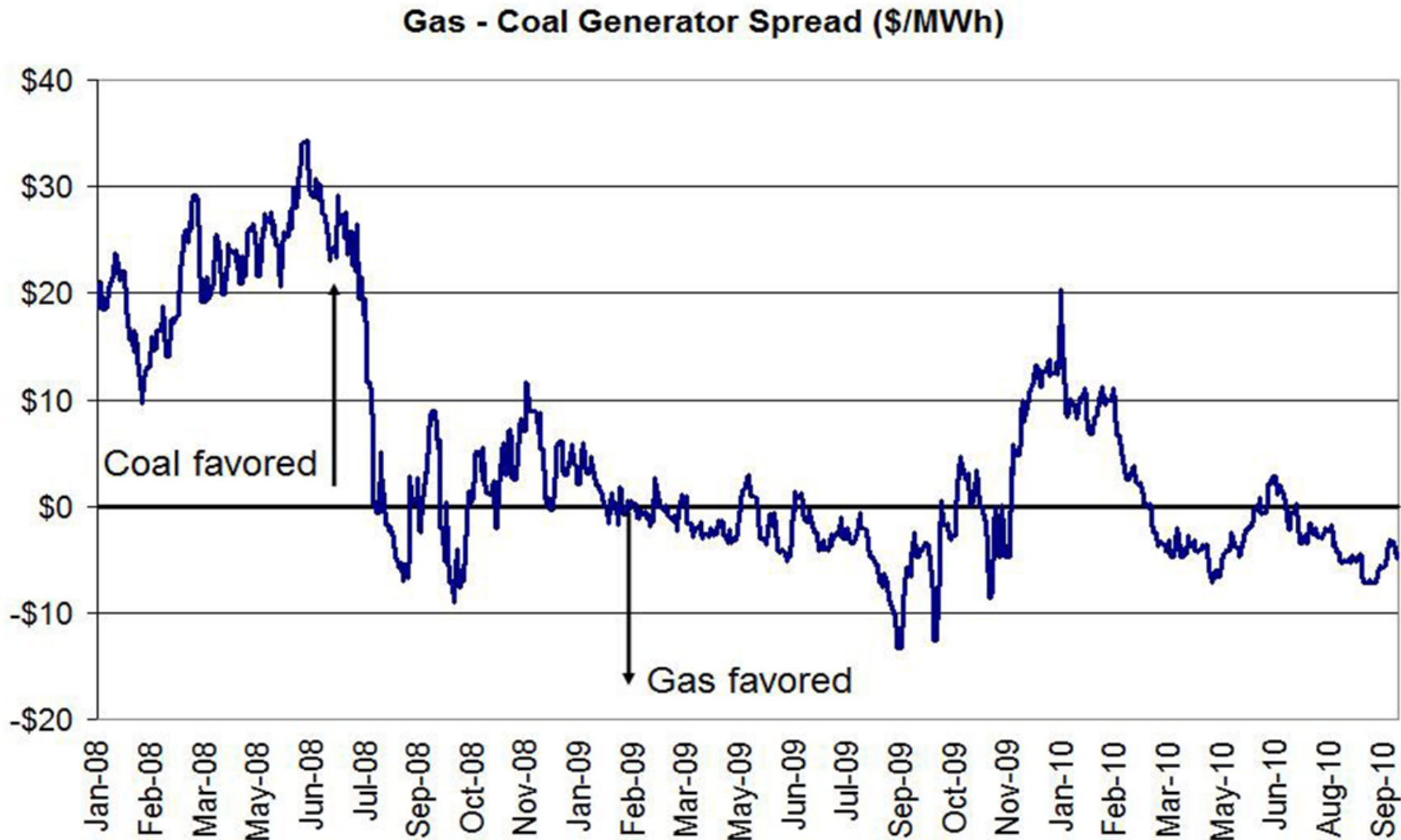
Source: Data derived from Ventyx Global LLC, Velocity Suite.

Exhibit 25: US Power Plants by Vintage and Fuel Type



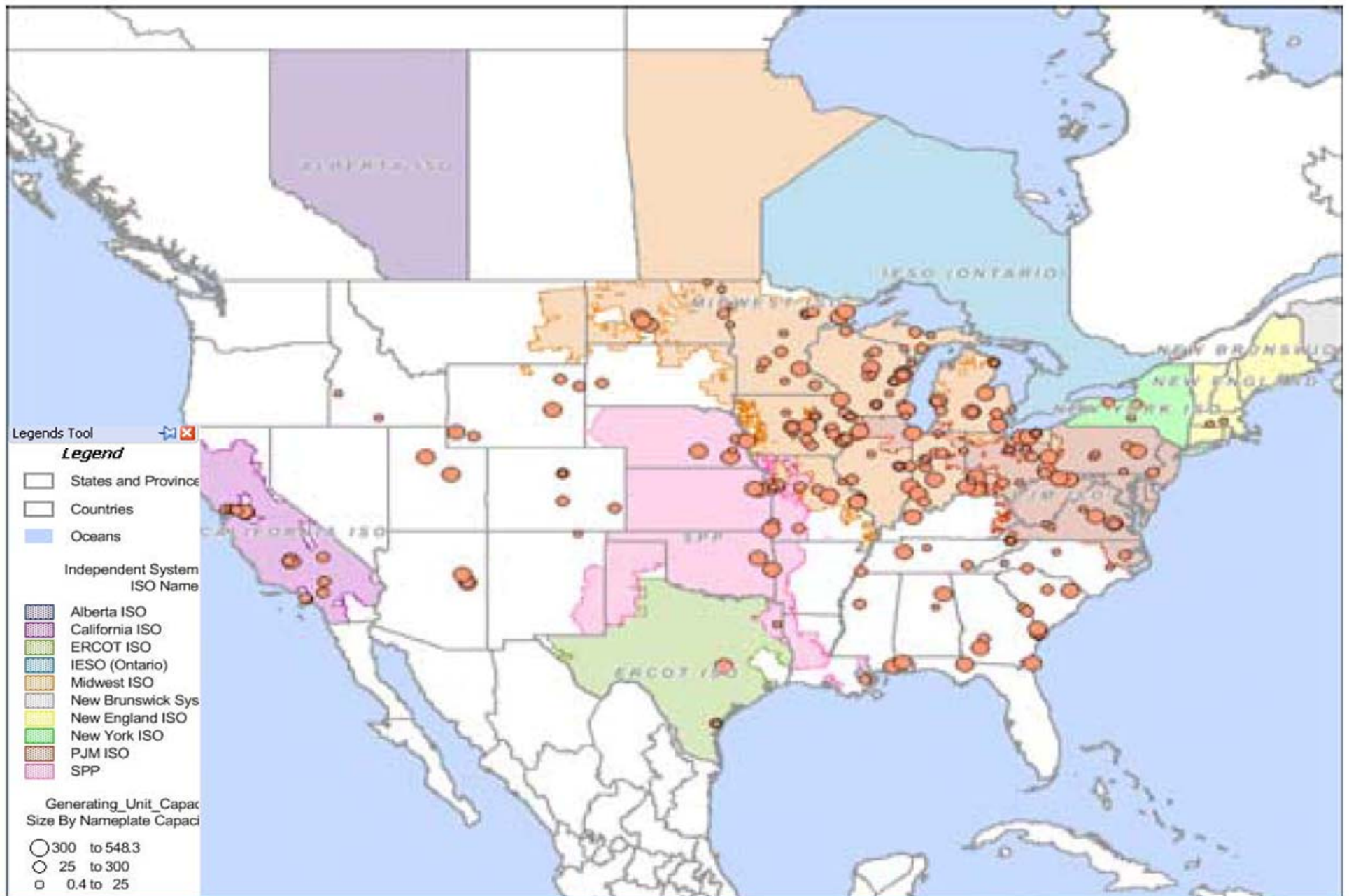
Source: Energy Velocity, Company data, Credit Suisse estimates

Market Conditions Favor Coal to Gas Switching



Source: Derived from Bloomberg, ESI. Spot Central Appalachian coal and Henry Hub gas prices, relevant annual Nox and SO2 emissions cost, \$15/ton coal transportation assumption.

Exhibit 140: Location of Un-Scrubbed Coal Plants



Source: Energy Velocity, Credit Suisse estimates

What's Impacting Electric Utility Today?



Some Emerging Technologies that Will Impact T&D Systems Over the Next Decade





WE HAVE TECHNOLOGY. LET'S GO.

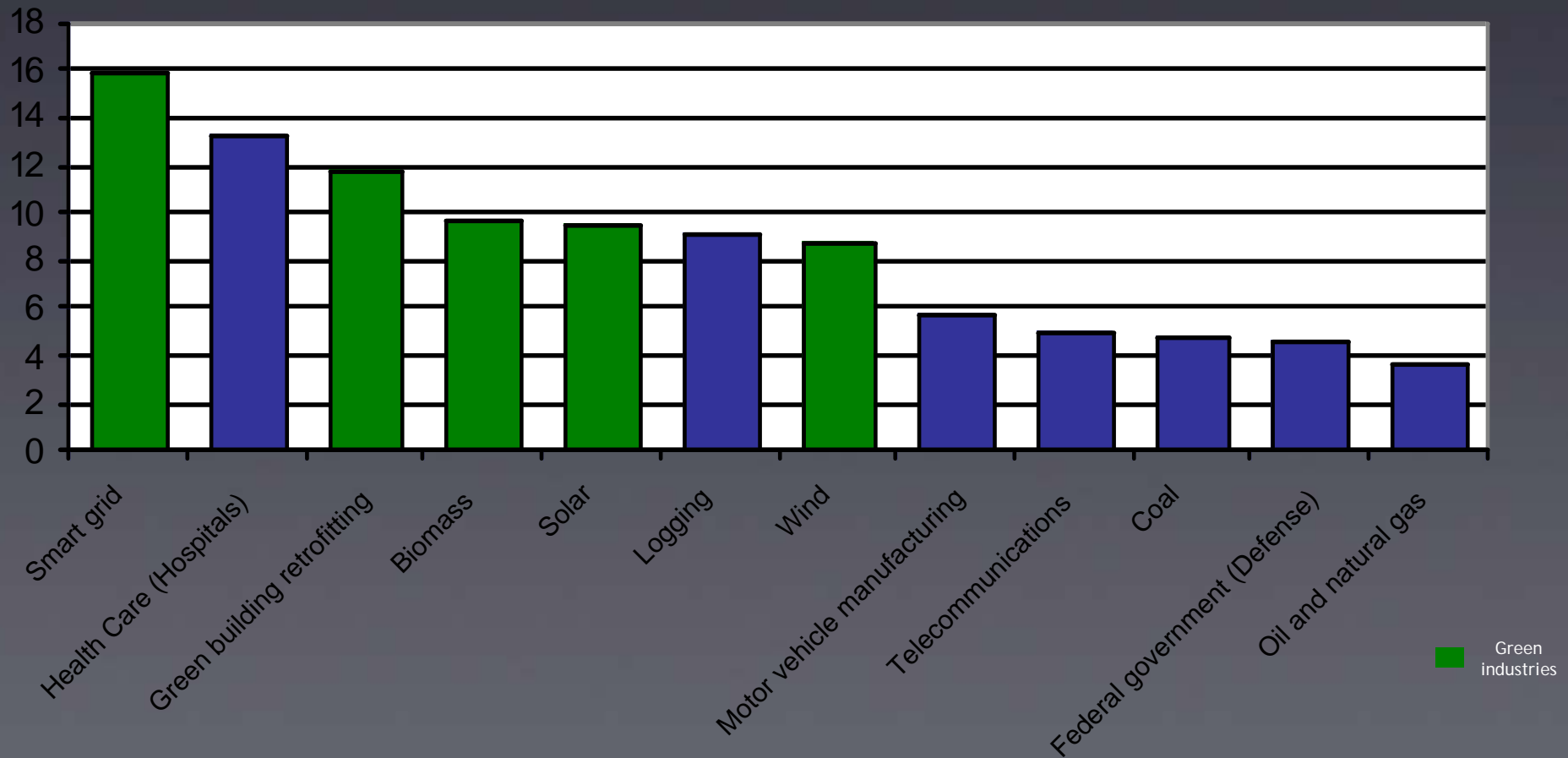
LET'S FIGURE OUT A WAY
TO CHARGE FOR SUNSHINE!

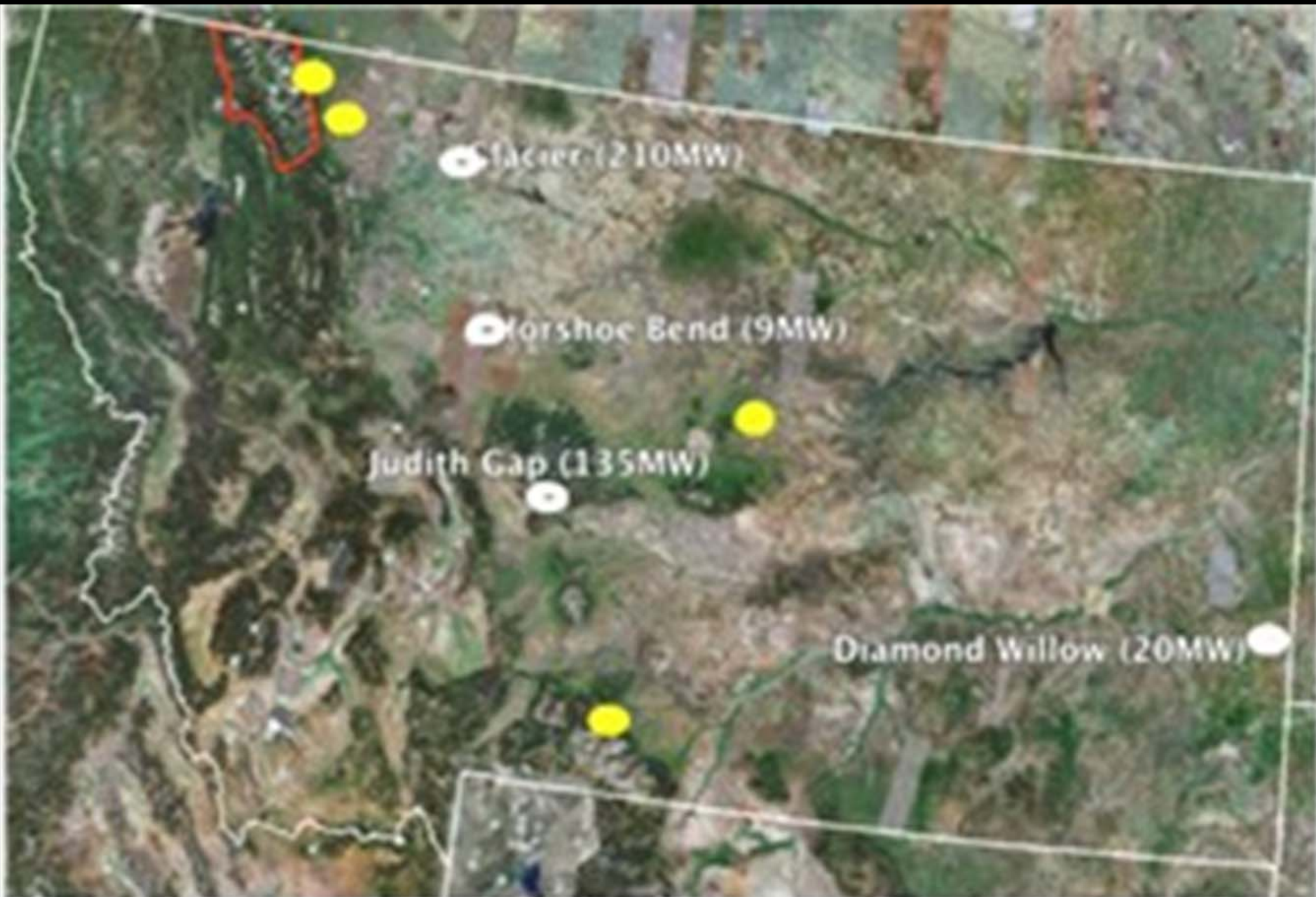
FIND OUT HOW EXISTING TECHNOLOGY
IS HELPING TO MEET THE ENERGY CHALLENGE
AT WWW.SHELL.US/LETSGO



Large-scale: Retrofitting and Conventional Clean Energy Generation are Job Creation Engines

Direct and indirect jobs created per \$1M





Glacier (210MW)

Horshoe Bend (9MW)

Judith Gap (135MW)

Diamond Willow (20MW)

expanding clean power™

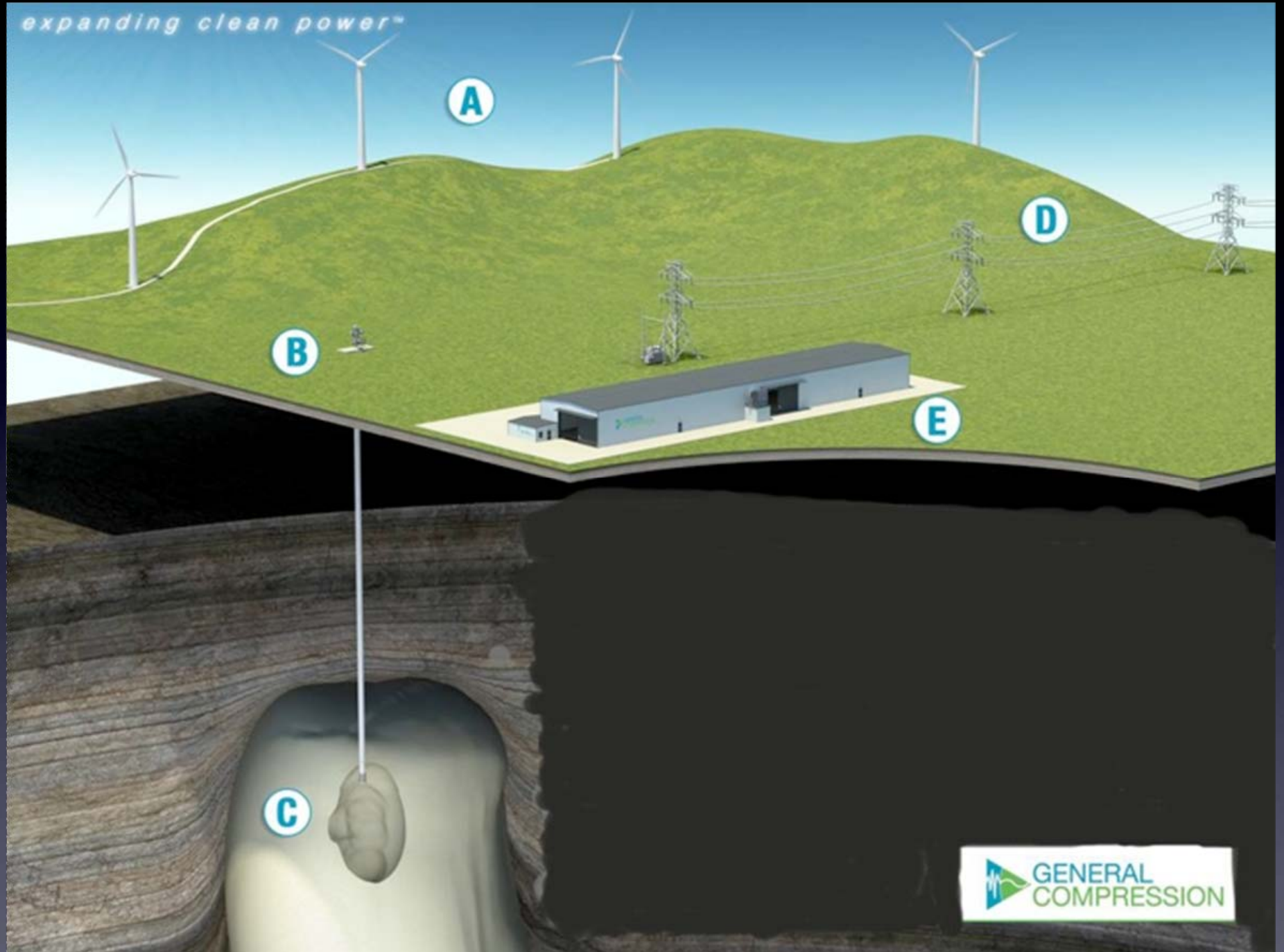
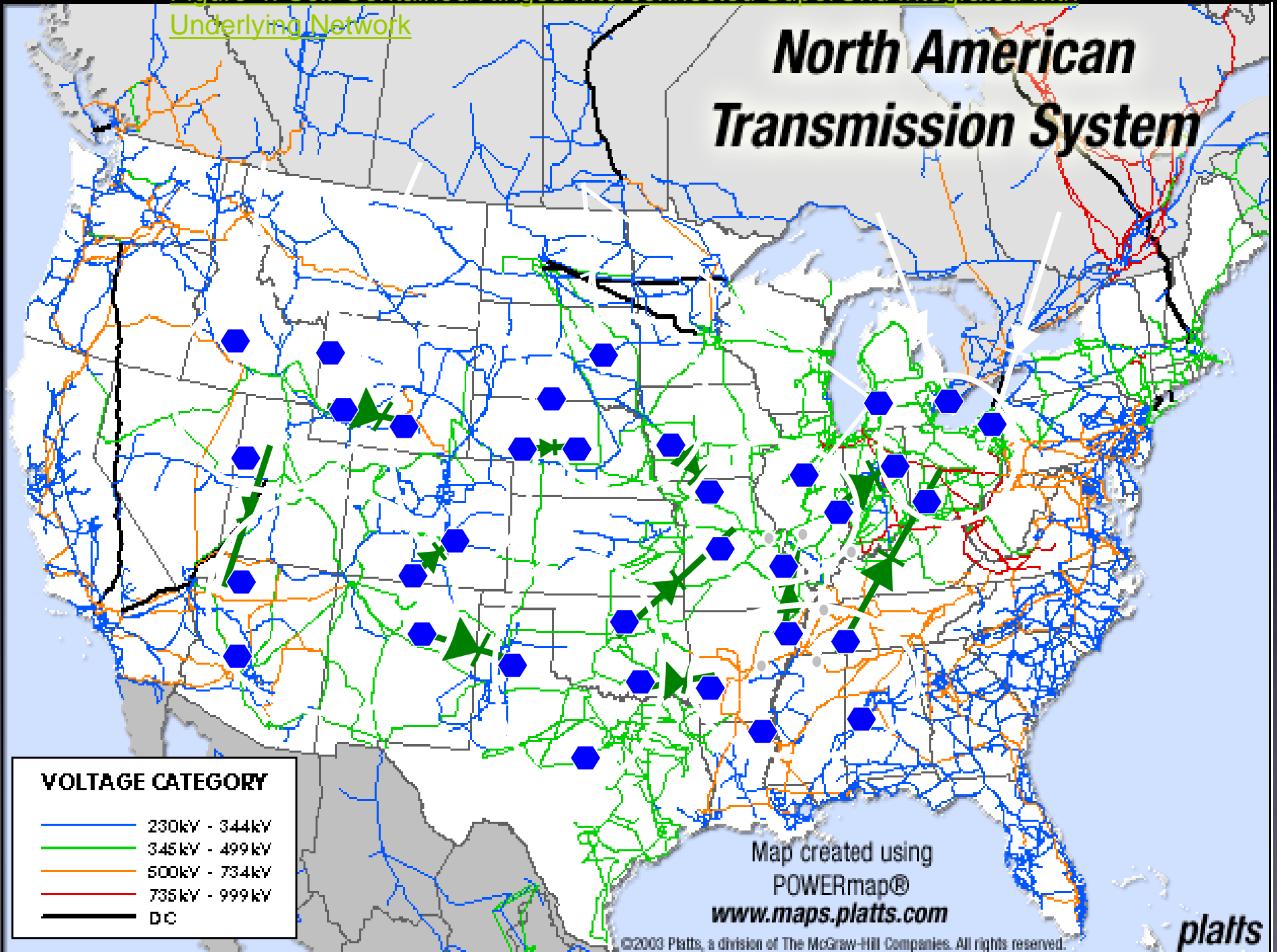
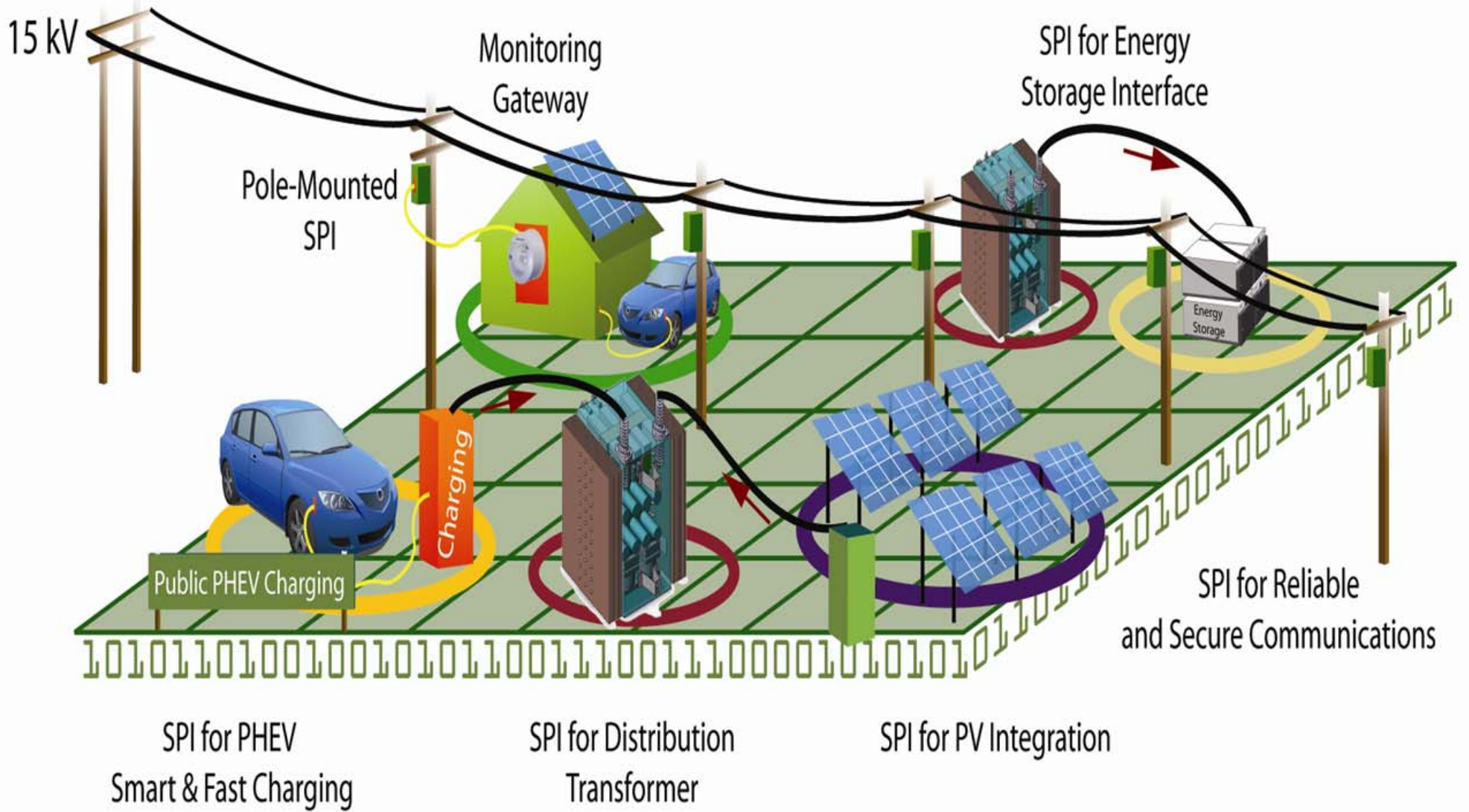




Figure 4. Self-Contained Ringed Interconnected SuperGrid Integrated with Underlying Network





Consumer Devices

These devices are typically behind the meter and receive price signals to make "smart" decisions regarding energy use. Ultimately, their decisions are communicated back to the grid.



Energy Providers

Energy providers are a broad community that includes central generators, distributed generation, renewable energy resources, self supply and storage options to promote the most economic forms of energy.



Network Operations

The grid operator receives communication from sources within the grid community and sends data, such as price signals, back to all participants.



Energy Users

From a simple single-home meter to an aggregation of multiple buildings and developments, load is aggregated and controlled based on information received and provided.



Distribution

The distribution network continually models the use of the system and is better able to manage and correct problems to promote reliable service.



Transmission

Transmission monitors and adjusts its resources ensure a continuous supply of energy.

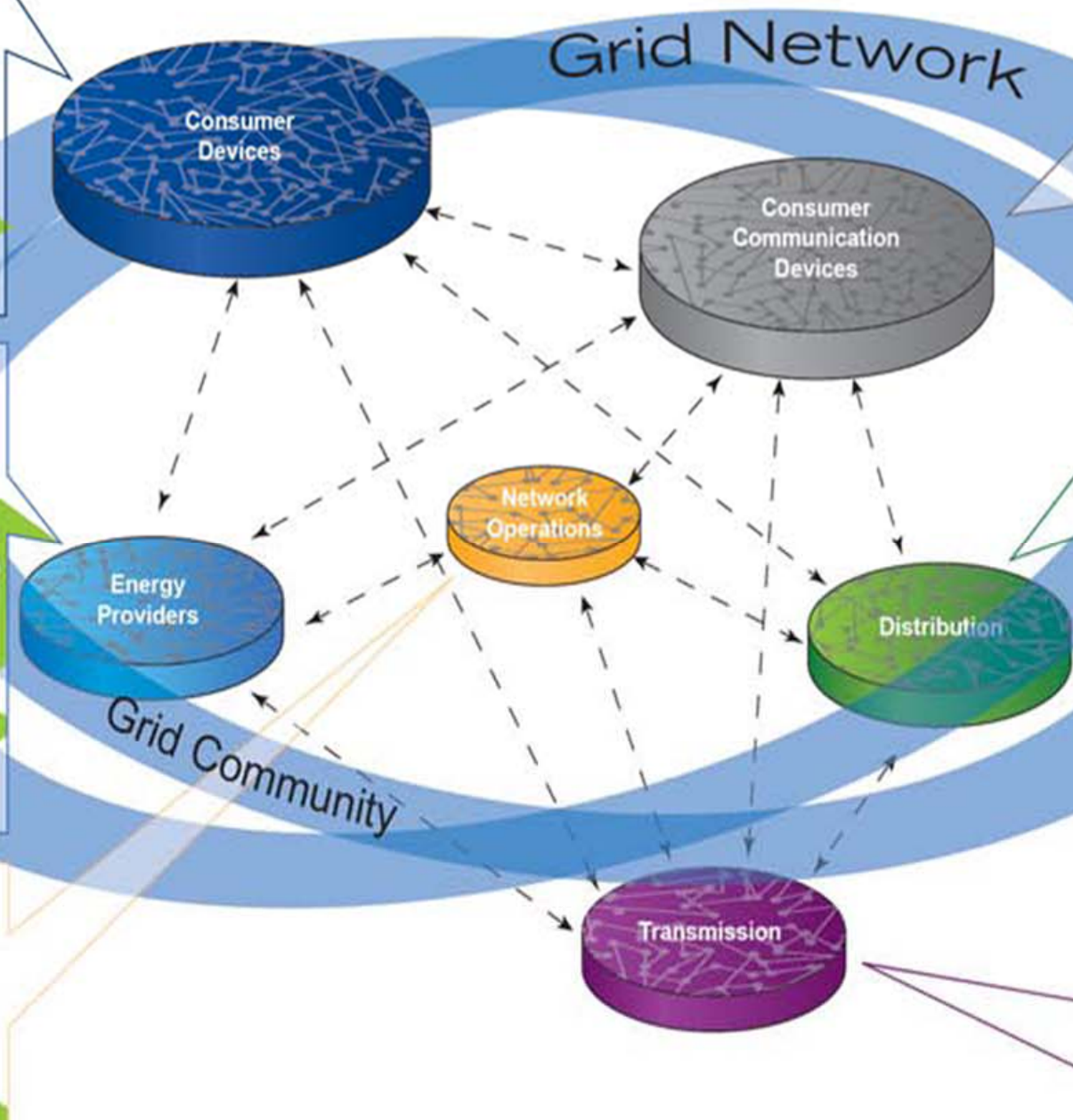
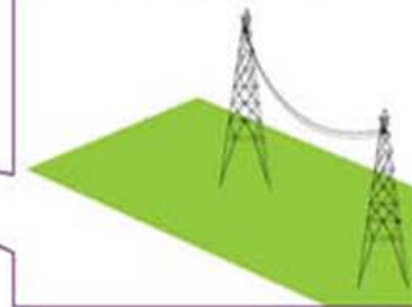
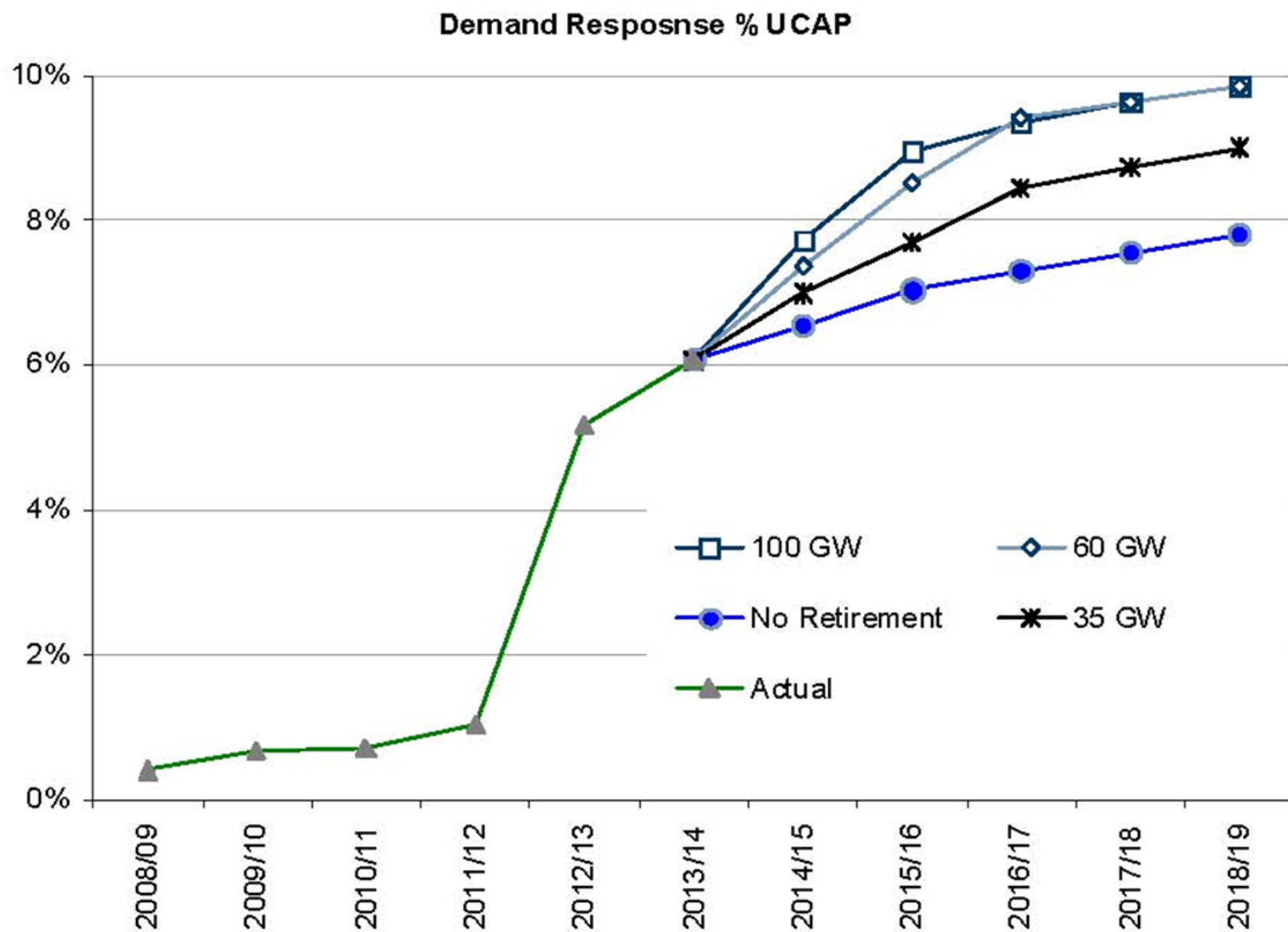


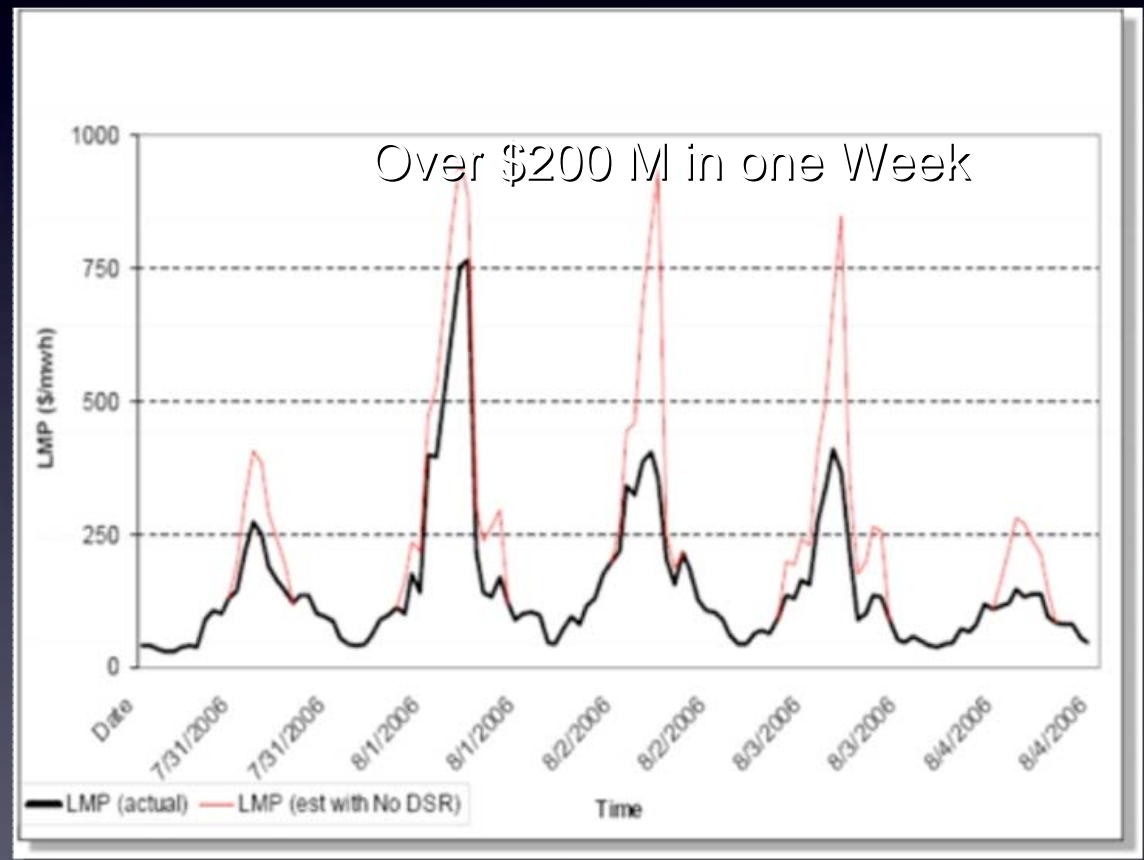
Exhibit 99: Demand Response Under Different Retirement Scenario



Source: Company data, Credit Suisse estimates

Grid Benefits of Demand Response

- PJM Study Shows that a 3% Reduction in demand of Top 20 Five-hour Blocks in 5 Mid-Atlantic States Could Save \$280 Million per Year
- The Brattle Group Estimates that a 5% Reduction in Grid Peak Load Can Result in \$3 Billion Savings Annually, for PV Over 20 Years of \$31 Billion



Electric Transportation - Key to the Nation's Freedom from Oil





UNIVERSITY OF DELAWARE

PJM

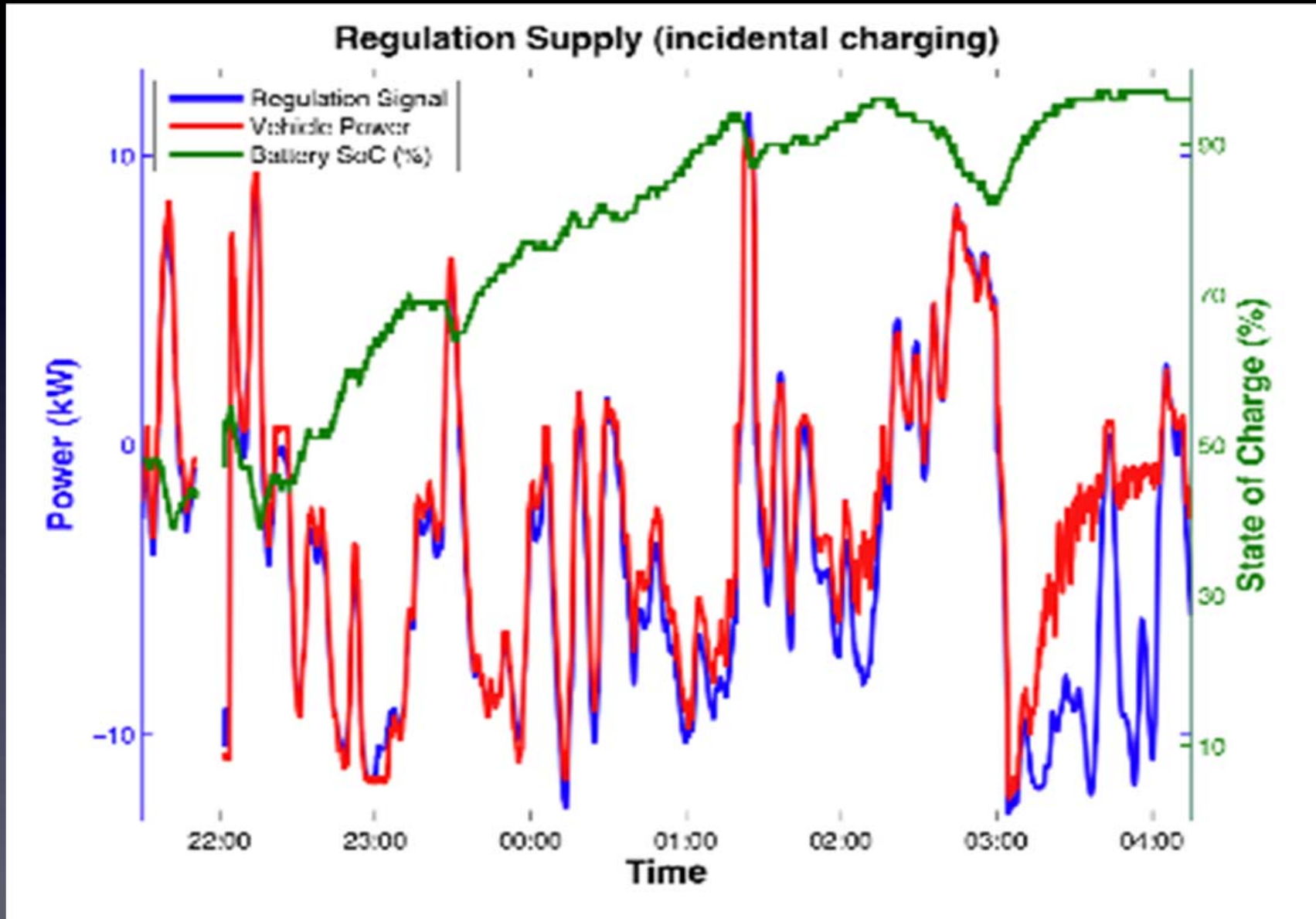
Pepco Holdings Inc

V2G

Vehicle-to-Grid Power (V2G)
What does it mean?
[Image of a car] [Image of a car]
[Diagram of a car and a house connected by a bidirectional arrow]
[Text describing V2G technology and its benefits]

Pepco Holdings Inc V2G
[Image of a charging station]

Regulation Services While Charging





Thank you!