



Community Power Works

Better Buildings Conference

Andrea Petzel, Project Manger – CPW for Home



What is Community Power Works?

Seattle's Home Energy Upgrade Program

- Upgrade 2,000 homes Achieve 15% energy savings/home
- Develop affordable financing options
- Reduce the cost of upgrades with new incentives
- Community High-Road Agreement
 - Negotiated with stakeholders
 - Mayor's Advisory Group



Elements of the High-Road Agreement

High-Road Commitments:

- BPI Certification
- Wage Rates
- Targets for Business Ownership:
 - 80-100% small business
 - 100% local business
 - 30% minority
 - 10% women
 - Increase opportunities for veterans
- Training Requirements
- Hiring Standards from Qualified Training Providers
- Goals for hiring new, entry-level targeted workers



Piloting a New Approach to Training

Current Training Programs couldn't meet contractor needs:

- Lack of quality entry-level workers
- Outdated model for training
- No contractor involvement in the training process
- Limited support for graduates



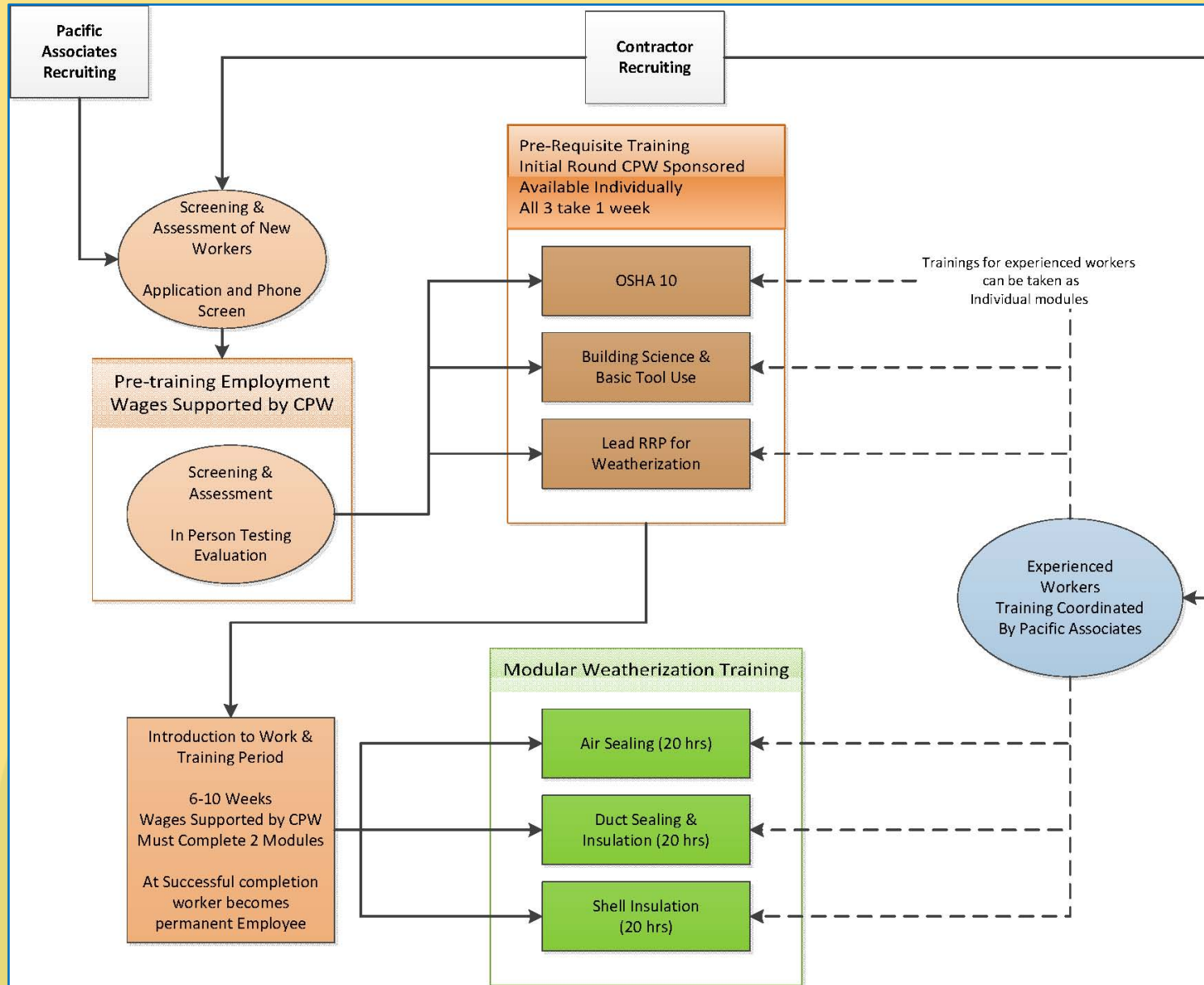
Piloting a New Approach to Training

Creating a Community Around Training:

- Partnership with S. Seattle Community College and NW EcoBuilding Guild
- Option to hire first, train second
- Active participation by contractors
- Available to entry-level workers and more experienced workers
- Free!



Training Process & Modules





More Information

Andrea Petzel

Project Manager

Community Power Works for Home

206.233.0079 or andrea.petzel@seattle.gov

www.communitypowerworks.org