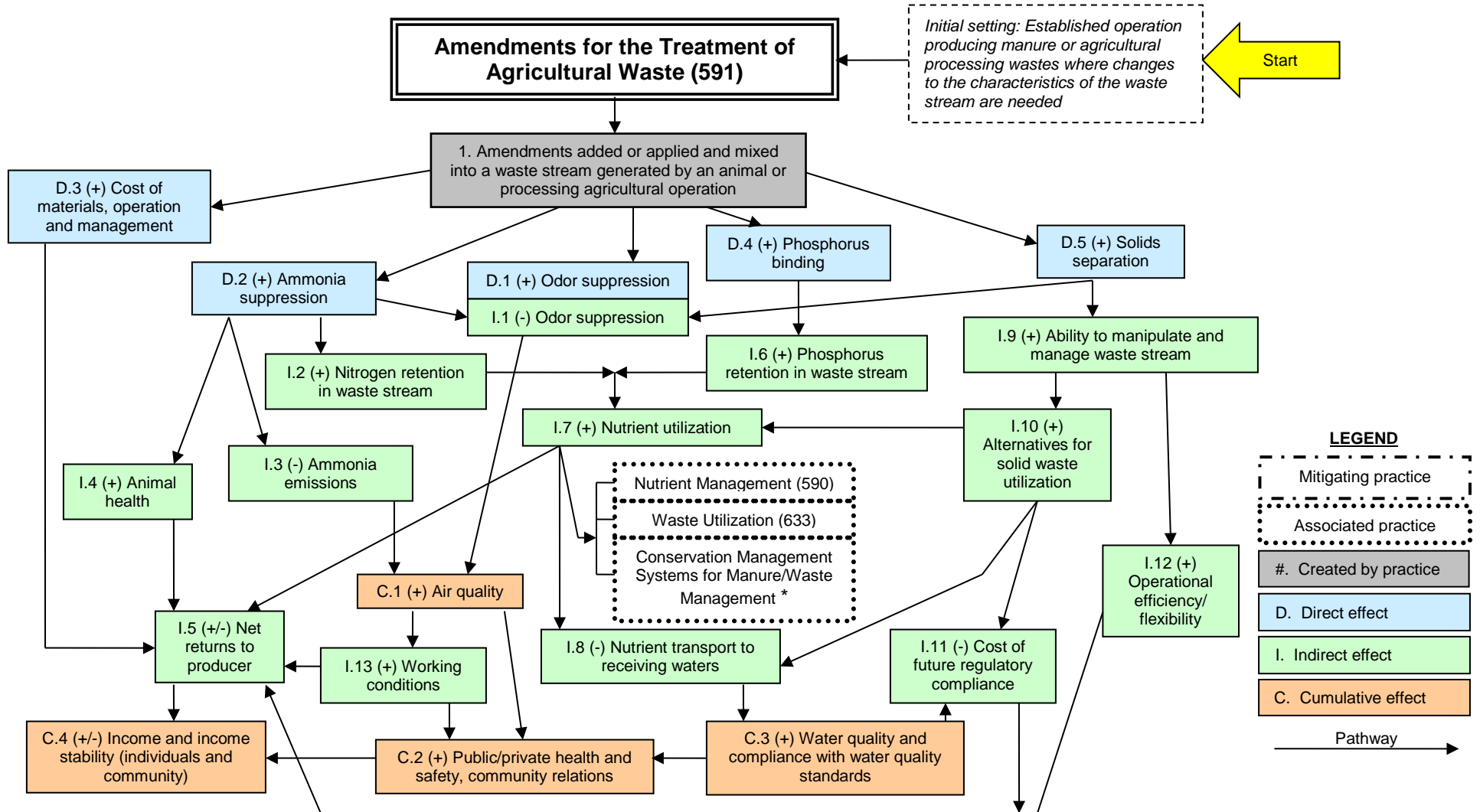


NRCS CONSERVATION PRACTICE EFFECTS - NETWORK DIAGRAM

March 2014



Notes:
 Effects are qualified with a plus (+) or minus (-). These symbols indicate only an increase (+) or a decrease (-) in the effect upon the resource, not whether the effect is beneficial or adverse.
 * Various practices for management and/or treatment of manure/wastes.