



U.S. DEPARTMENT OF
ENERGY

Office of
Science

FY2015 Nuclear Physics Workforce Survey

Office of Nuclear Physics

This report conveys the results of the October 2015 survey of scientific workforce in the Department of Energy, Nuclear Physics (NP) program. The same procedure as in previous years was used. People were counted in the categories of permanent Ph.D. staff, temporary Ph.D. staff, Ph.D. staff not supported by DOE, DOE-supported graduate students, and graduate students not supported by DOE. Counts of Ph.D.s awarded were also collected. In all cases, people were asked to self-define whether they were primarily doing experimental or theoretical work. Persons who receive support from the National Science Foundation are not included in this survey.

On October 1, 2015, the survey shows that 2,204 supported and non-supported scientists and students were associated with the program. Of this number DOE supported 844 permanent Ph.D. staff, 344 temporary Ph.D. staff, and 522 graduate students. Not supported directly by DOE but associated with the program were an additional 158 Ph.D. staff and 336 graduate students. DOE also supported 86 graduate students who were awarded Ph.D.s.

Summaries of the numerical data for the years 1995 through 2015 are provided as well as separate summary data for the national laboratories and universities, and statistics on the Ph.D.s awarded.

Brenda May

Results of Nuclear Physics Workforce Surveys

DOE Supported Workforce Data

Workforce Counts on October 1st

SUMMARY OF LABORATORIES & UNIVERSITIES																					
Both Experimental and Theory																					
	<u>1995</u>	<u>1996</u>	<u>1997</u>	<u>1998</u>	<u>1999</u>	<u>2000</u>	<u>2001</u>	<u>2002</u>	<u>2003</u>	<u>2004</u>	<u>2005</u>	<u>2006</u>	<u>2007</u>	<u>2008</u>	<u>2009</u>	<u>2010</u>	<u>2011</u>	<u>2012</u>	<u>2013</u>	<u>2014</u>	<u>2015</u>
Permanent Staff	657	689	682	689	690	676	683	702	727	746	742	699	724	733	779	871	873	872	813	833	844
Temporary Staff	342	346	360	380	394	363	362	364	410	403	388	344	341	365	364	423	434	411	381	360	344
Graduate Students	418	423	422	415	404	408	408	442	457	473	509	486	472	493	516	538	550	546	517	518	522
TOTAL	1417	1458	1464	1484	1488	1447	1453	1508	1594	1622	1639	1529	1537	1591	1659	1832	1857	1829	1711	1711	1710
Ph.D.s Awarded	101	96	97	100	95	87	67	100	79	66	80	92	69	89	85	90	86	104	117	72	86
Experimental																					
	<u>1995</u>	<u>1996</u>	<u>1997</u>	<u>1998</u>	<u>1999</u>	<u>2000</u>	<u>2001</u>	<u>2002</u>	<u>2003</u>	<u>2004</u>	<u>2005</u>	<u>2006</u>	<u>2007</u>	<u>2008</u>	<u>2009</u>	<u>2010</u>	<u>2011</u>	<u>2012</u>	<u>2013</u>	<u>2014</u>	<u>2015</u>
Permanent Staff	515	536	538	547	551	542	536	554	577	586	582	555	557	574	607	690	677	678	632	662	670
Temporary Staff	260	263	280	299	298	286	287	277	319	308	295	266	256	266	254	311	314	315	292	269	254
Graduate Students	320	321	323	323	319	320	319	338	354	361	394	375	348	364	382	400	403	390	364	385	389
TOTAL	1095	1120	1141	1169	1168	1148	1142	1169	1250	1255	1271	1196	1161	1204	1243	1401	1394	1383	1288	1316	1313
Ph.D.s Awarded	78	71	66	67	70	56	48	67	63	45	51	68	48	62	54	63	57	75	75	49	61
Theory																					
	<u>1995</u>	<u>1996</u>	<u>1997</u>	<u>1998</u>	<u>1999</u>	<u>2000</u>	<u>2001</u>	<u>2002</u>	<u>2003</u>	<u>2004</u>	<u>2005</u>	<u>2006</u>	<u>2007</u>	<u>2008</u>	<u>2009</u>	<u>2010</u>	<u>2011</u>	<u>2012</u>	<u>2013</u>	<u>2014</u>	<u>2015</u>
Permanent Staff	142	153	144	142	139	134	147	148	150	160	160	144	167	159	172	181	196	194	181	171	174
Temporary Staff	82	83	80	81	96	77	75	87	91	95	93	78	85	99	110	112	120	96	89	91	90
Graduate Students	98	102	99	92	85	88	89	104	103	112	115	111	124	129	134	138	147	156	153	133	133
TOTAL	322	338	323	315	320	299	311	339	344	367	368	333	376	387	416	431	463	446	423	395	397
Ph.D.s Awarded	23	25	31	33	25	31	19	33	16	21	29	24	21	27	31	27	29	29	42	23	25

Results of Nuclear Physics Workforce Surveys

DOE Supported Workforce Data

Workforce Counts on October 1st

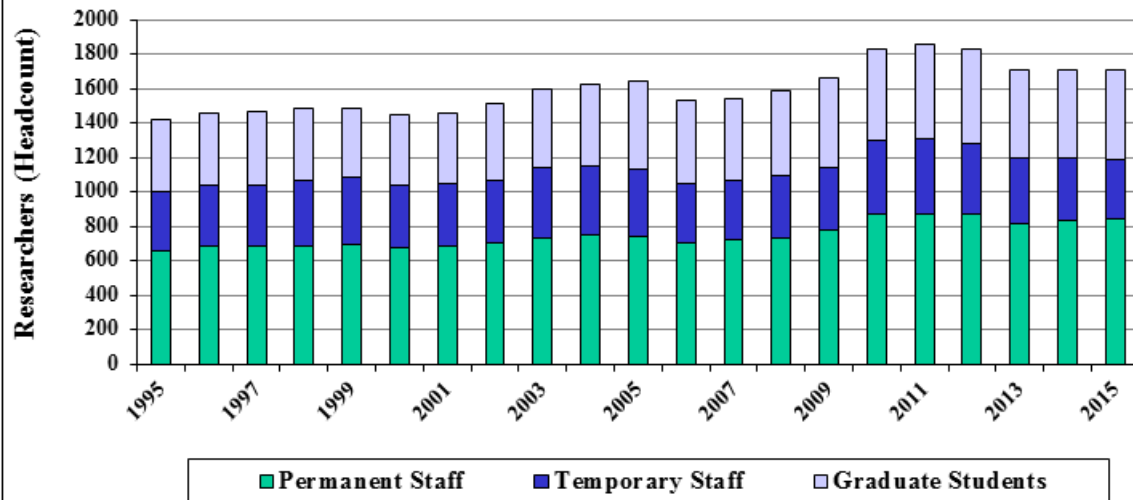
SUMMARY OF UNIVERSITIES																					
Both Experimental and Theory																					
	<u>1995</u>	<u>1996</u>	<u>1997</u>	<u>1998</u>	<u>1999</u>	<u>2000</u>	<u>2001</u>	<u>2002</u>	<u>2003</u>	<u>2004</u>	<u>2005</u>	<u>2006</u>	<u>2007</u>	<u>2008</u>	<u>2009</u>	<u>2010</u>	<u>2011</u>	<u>2012</u>	<u>2013</u>	<u>2014</u>	<u>2015</u>
Permanent Staff	334	368	364	369	363	359	367	364	358	362	363	339	342	346	362	372	395	401	375	389	402
Temporary Staff	197	212	217	233	231	223	225	227	238	228	217	207	207	215	217	244	252	231	241	232	222
Graduate Students	360	361	359	336	342	355	353	385	380	405	421	389	394	409	431	441	449	462	437	440	455
TOTAL	891	941	940	938	936	937	945	976	976	995	1001	935	943	970	1010	1057	1096	1094	1053	1061	1079
Ph.D.s Awarded	90	86	88	85	95	87	67	100	79	66	80	92	69	89	85	90	86	104	117	72	86
Experimental																					
	<u>1995</u>	<u>1996</u>	<u>1997</u>	<u>1998</u>	<u>1999</u>	<u>2000</u>	<u>2001</u>	<u>2002</u>	<u>2003</u>	<u>2004</u>	<u>2005</u>	<u>2006</u>	<u>2007</u>	<u>2008</u>	<u>2009</u>	<u>2010</u>	<u>2011</u>	<u>2012</u>	<u>2013</u>	<u>2014</u>	<u>2015</u>
Permanent Staff	239	258	258	263	261	256	255	253	254	255	258	247	239	244	252	264	275	279	256	279	293
Temporary Staff	142	153	160	175	169	165	170	166	171	169	165	163	159	158	152	176	183	173	182	173	167
Graduate Students	267	264	265	253	264	271	271	284	284	301	314	291	283	294	310	314	320	314	298	315	331
TOTAL	648	675	683	691	694	692	696	703	709	725	737	701	681	696	714	754	778	766	736	767	791
Ph.D.s Awarded	68	62	60	55	70	56	48	67	63	45	51	68	48	62	54	63	57	75	75	49	61
Theory																					
	<u>1995</u>	<u>1996</u>	<u>1997</u>	<u>1998</u>	<u>1999</u>	<u>2000</u>	<u>2001</u>	<u>2002</u>	<u>2003</u>	<u>2004</u>	<u>2005</u>	<u>2006</u>	<u>2007</u>	<u>2008</u>	<u>2009</u>	<u>2010</u>	<u>2011</u>	<u>2012</u>	<u>2013</u>	<u>2014</u>	<u>2015</u>
Permanent Staff	95	110	106	106	102	103	112	111	104	107	105	92	103	102	110	108	120	122	119	110	109
Temporary Staff	55	59	57	58	62	58	55	61	67	59	52	44	48	57	65	68	69	58	59	59	55
Graduate Students	93	97	94	83	78	84	82	101	96	104	107	98	111	115	121	127	129	148	139	125	124
TOTAL	243	266	257	247	242	245	249	273	267	270	264	234	262	274	296	303	318	328	317	294	288
Ph.D.s Awarded	22	24	28	30	25	31	19	33	16	21	29	24	21	27	31	27	29	29	42	23	25



FY2015 Nuclear Physics Workforce Survey

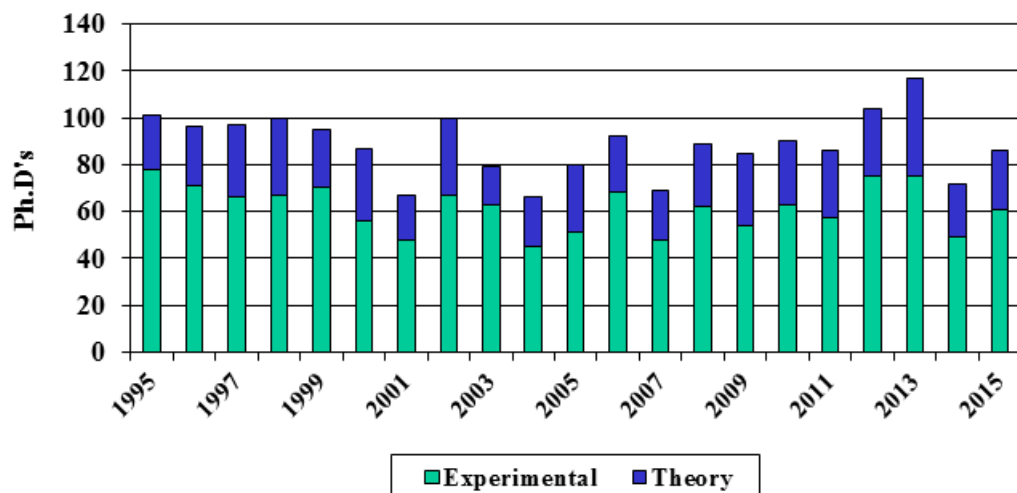
DOE Support Workforce

Laboratories and Universities



FY2015 Nuclear Physics Workforce Survey

Ph.D.s Awarded





FY2015 Nuclear Physics Workforce Survey

Statistics on Ph.D.s Awarded

*Data Collected Since 2004

- **Average Number of Years to Obtain a PhD**
 - 5.7 Years (Average Based on 1020 data points)
- **% U.S. Citizen** 52.3% (% Based on 958 data points)
- **Males/Females:** 81.1% / 18.9% (% Based on 1020 data points)
- **Race:** (% Based on 956 data points)
 - **White:** 69.1% **Asian:** 25.5% **Black or African American:** 1.5%
 - **Hispanic or Latino:** 3.6%
 - **Native Hawaiian and Other Pacific Islander:** 0.2%
 - **American Indian and Alaska Native:** 0.1%
 - **Some Other Race:** 0.0%

FY2015 Nuclear Physics Workforce Survey

Statistics on Ph.D.s Awarded

*Data Collected Since 2004

- **Initial Career Location: USA / Non-USA / Undecided:**
 - 77.9% / 16.9% / 5.2% (% Based on 1022 data points)
- **Initial Career Path:** (% Based on 1022 data points)
 - **Applied Research/ National:** 2.8%
 - **Business or Non-Nuclear:** 9.5%
 - **Medical School/ Hospital:** 2.3%
 - **NP Basic Research / National Laboratory:** 15.4%
 - **NP Basic Research/ University:** 35.4%
 - **NP Teacher / Professor:** 4.8%
 - **Other Teacher / Professor:** 5.8%
 - **Other Basic Research / National Laboratory:** 1.8%
 - **Other Basic Research / University:** 6.8%
 - **Research / Nuclear Industry:** 3.8%
 - **Non-Profit:** 0.2%
 - **Other:** 2.4%
 - **Undecided:** 9.0%