

# System Condition Update

## Spring Operations Review Forum

June 29, 2012

1:00 – 2:00 p.m.

To participate in the call please dial: **(877) 336-1839**

When prompted, enter access code: 1687421



Celebrating 75 years of  
serving the Northwest

# Hydro Operations Update

The Federal Columbia River Power System is being operated on a controlled refill.

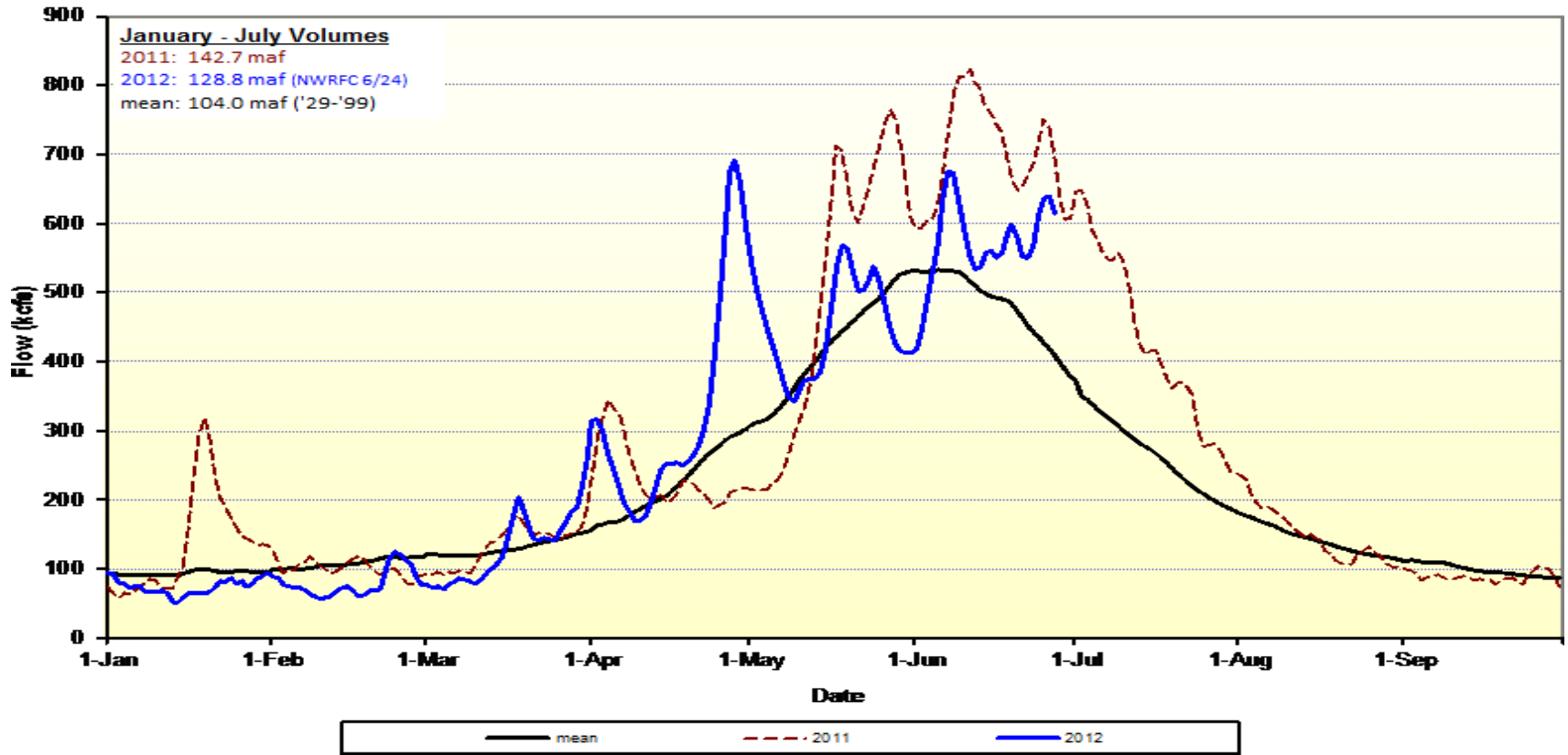
- Reservoir operations are operating to refill by late June/Early July.
  - Grand Coulee filled nearly 33 feet since June 1 and is currently at 1287.4 ft.
    - Max elevation of 1288.0 ft through June 30 (1290' is full)
  - All storage projects are, or are very near, full.
- Continue to operate the system for flood control/refill operations. Maximum discharge at The Dalles of 450 kcfs.
- The NW River Forecast Center's June 24, January-July Water Supply Forecast at The Dalles is 128.8 million acre-feet.
  - Up from 126.9 Maf on June 20.
- Oversupply Management Protocol has not been implemented this week. To date, approximately 20,600 MW-hrs of wind generation have been displaced at a cost of slightly less than \$1 million. Please refer to the external website for further details

# Actions to manage oversupply

- Last fall/winter BPA and BC Hydro released water from non-treaty storage in Canada. The space created by the releases last fall/winter has allowed Arrow outflows to be lower than they would have been absent the Non-Treaty Storage agreement. BPA and BCH stored nearly 2 Maf under this agreement between May 26 – July 6 to be released in August.
- As of June 14, BPA has acquired 66,260 MWh under the Mid-Columbia Spill Exchange agreement.
- Maximizing the amount of pump load.
- Have moved non-essential generator and transmission maintenance outages out of May and June.
- Coordinated spill on Willamette projects.
- CGS has been reduced to 85% during periods when it was helpful to minimize spill.
- Spill due to lack of demand.
- INC/DEC reserves have been occasionally reduced to manage to system operational objectives this Spring.

# Weather and Streamflow

## Natural Flows at The Dalles



# Weather and Streamflow

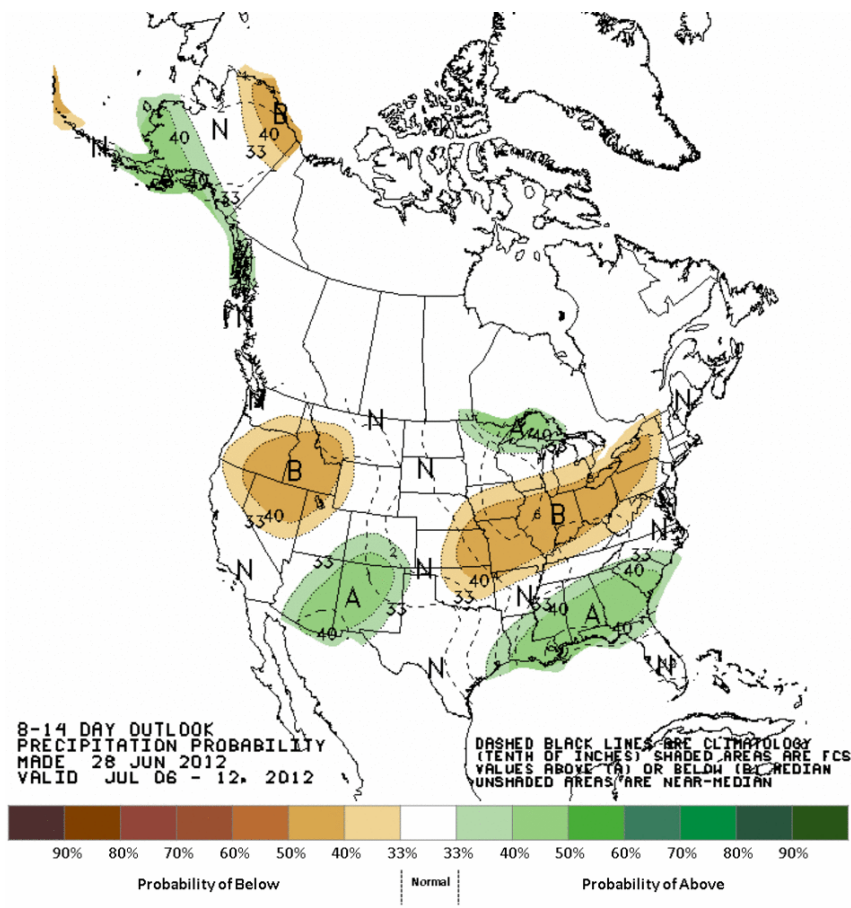
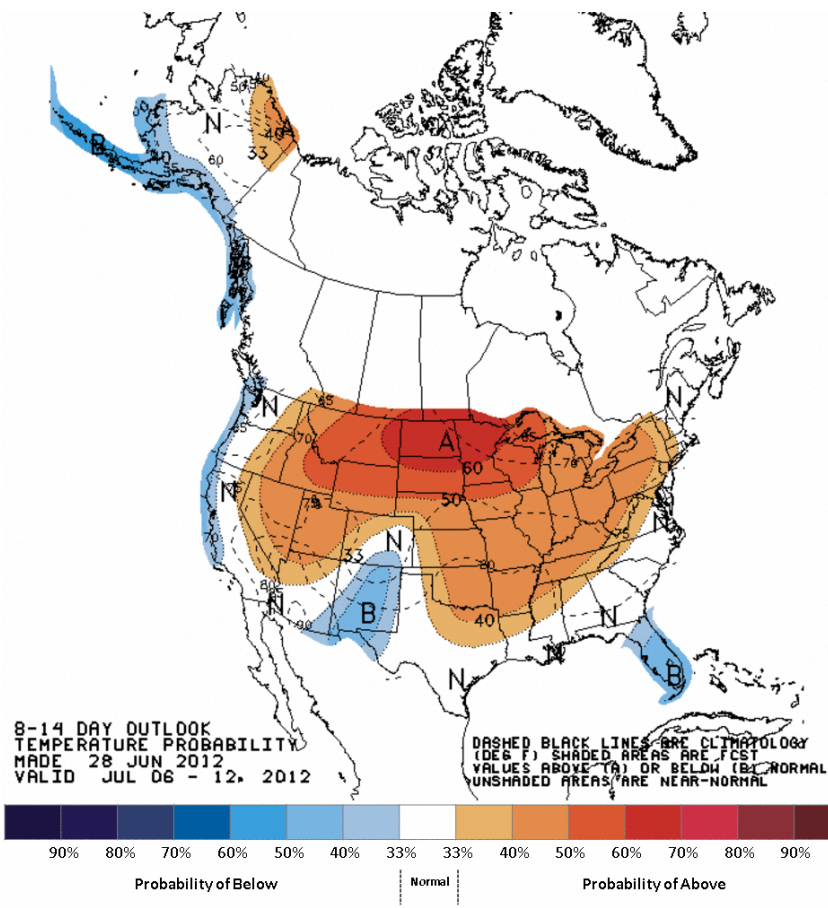
## Volume remaining at selected sites (kAF)

Runoff-processor date: Jun 26  
 RFC Volume Forecast: Jun 27

	<i>Jun 27</i>	<i>Jun 26</i>	
	NWRFC	Observed	Percent
<b>January-July</b>	ESP volcast	Since 1-Jan	Remaining
Grand Coulee	80,092	58,516	26.9%
Lower Granite	30,102	27,134	9.9%
The Dalles	128,752	101,087	21.5%

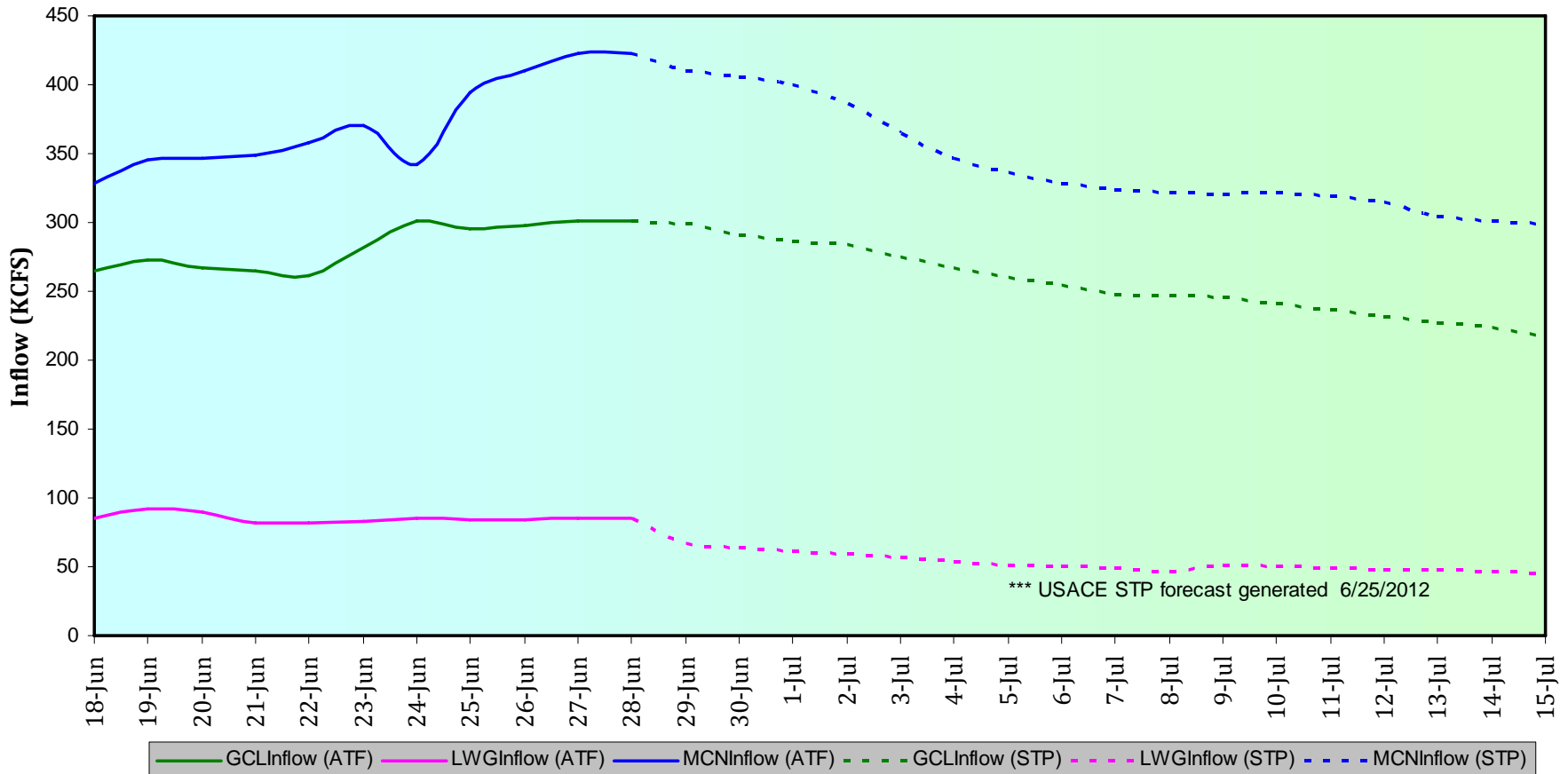
	NWRFC	Observed	Percent
<b>April-August</b>	ESP volcast	Since 1-Apr	Remaining
Grand Coulee	81,369	50,957	37.4%
Lower Granite	24,457	19,963	18.4%
The Dalles	120,626	81,623	32.3%

# Weather and Streamflow



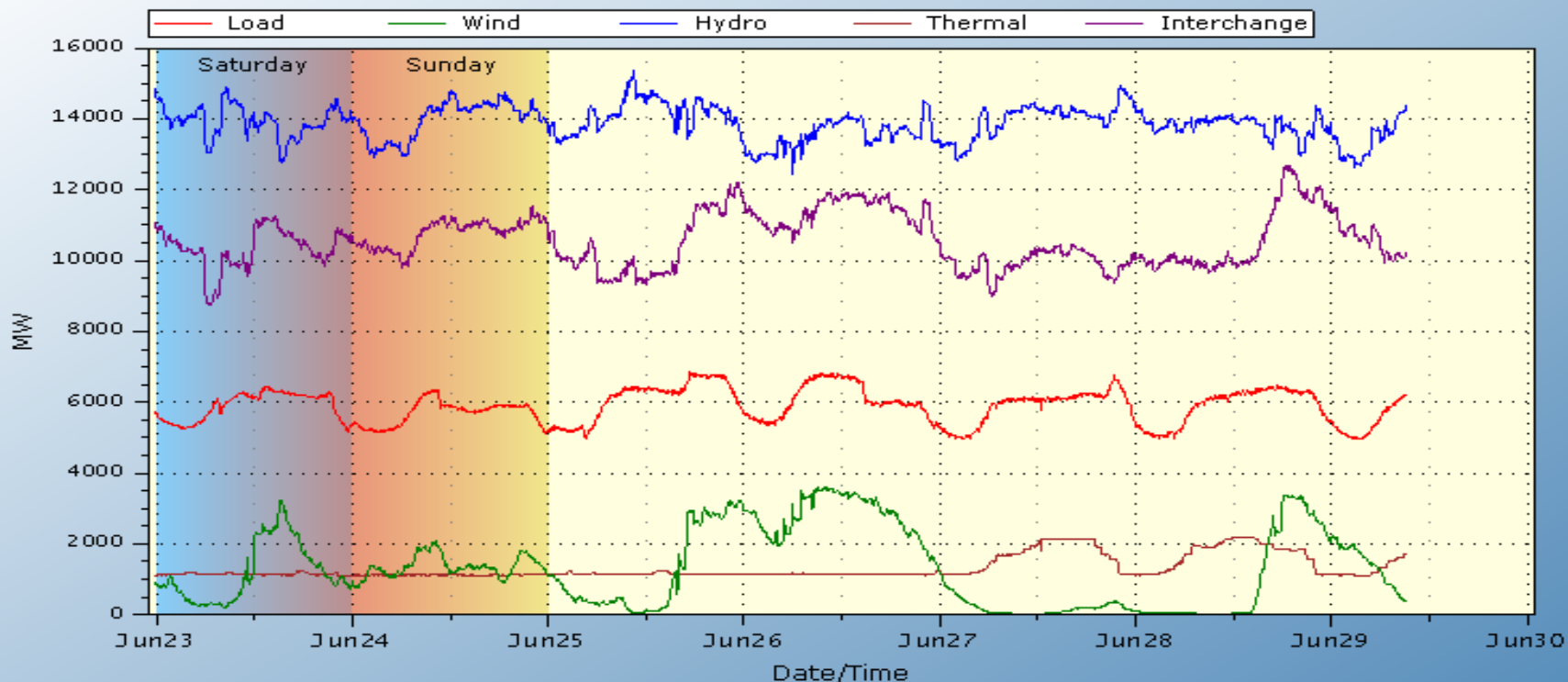
# Actual and Forecasted Flows

**Actual and Forecasted Inflows**  
**(Grand Coulee, Lower Granite and McNary Projects)**



# Balancing Authority Load and Total Wind, Hydro, and Thermal Generation

BPA Balancing Authority Load & Total Wind, Hydro, Thermal Generation, and Net Interchange Last 7 days  
 23Jun2012 - 30Jun2012 (last updated 29Jun2012 10:04:32)



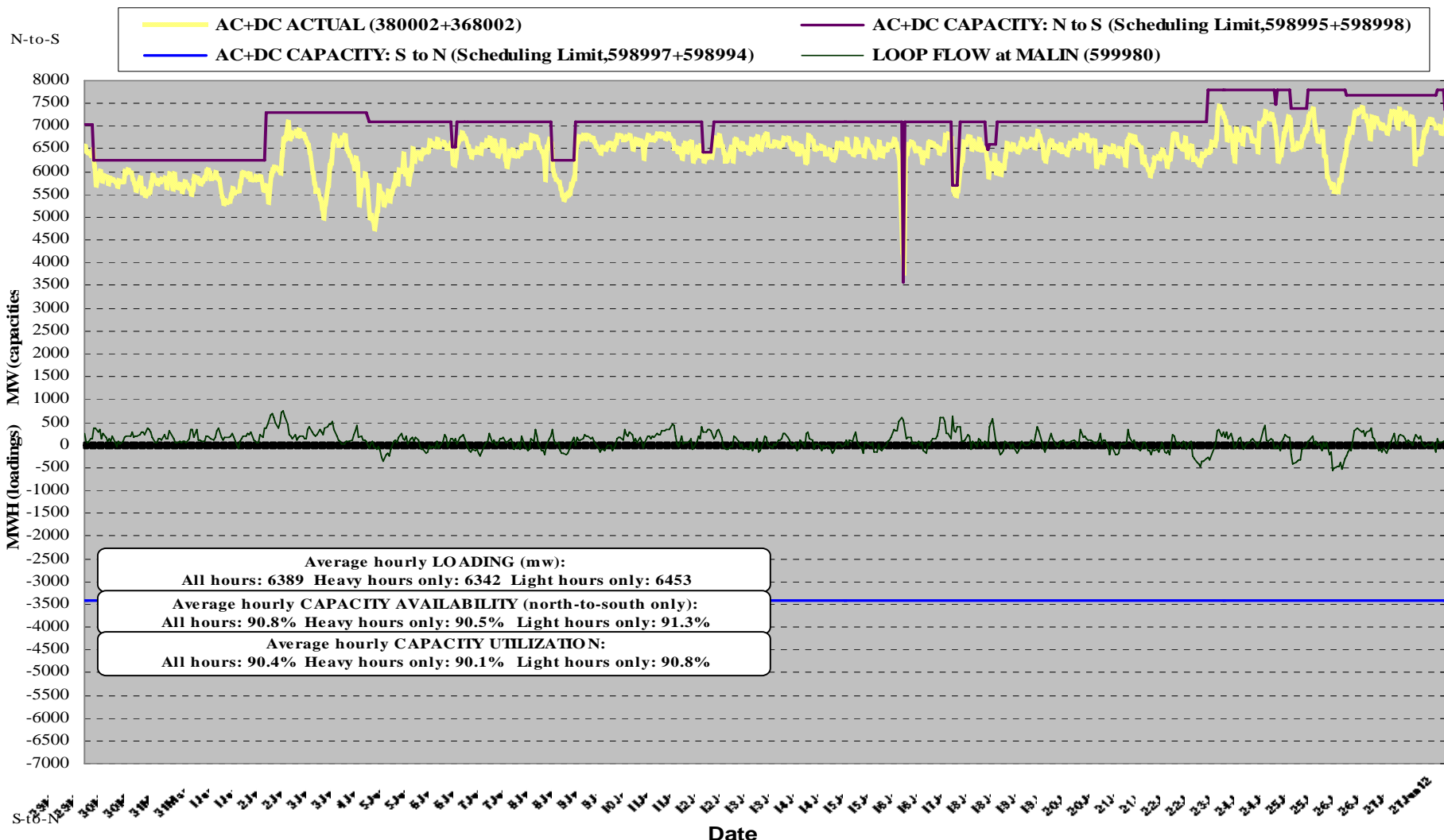
Based on 5-min readings from BPA's SCADA system for points 45583, 79687, 79682, 79685, and 45581.  
 Balancing Authority Load in Red, Wind Gen. in Green, Hydro Gen. in Blue,  
 Thermal Gen. in Brown, and Net Interchange in Purple.  
 Click chart for installed capacity info  
 BPA Technical Operations (TOT-OpInfo@bpa.gov)



# Transmission Updates

- **COI N>S**
  - 4800 MW: At rated capacity next seven days.
  
- **PDCI N>S**
  - 2990 MW: At rated capacity next seven days.
  
- **NI S>N**
  - 1950 MW: Nomogram deductions seen in preschedule forecast reduce capacity as low as ~1700 MW over various hours.

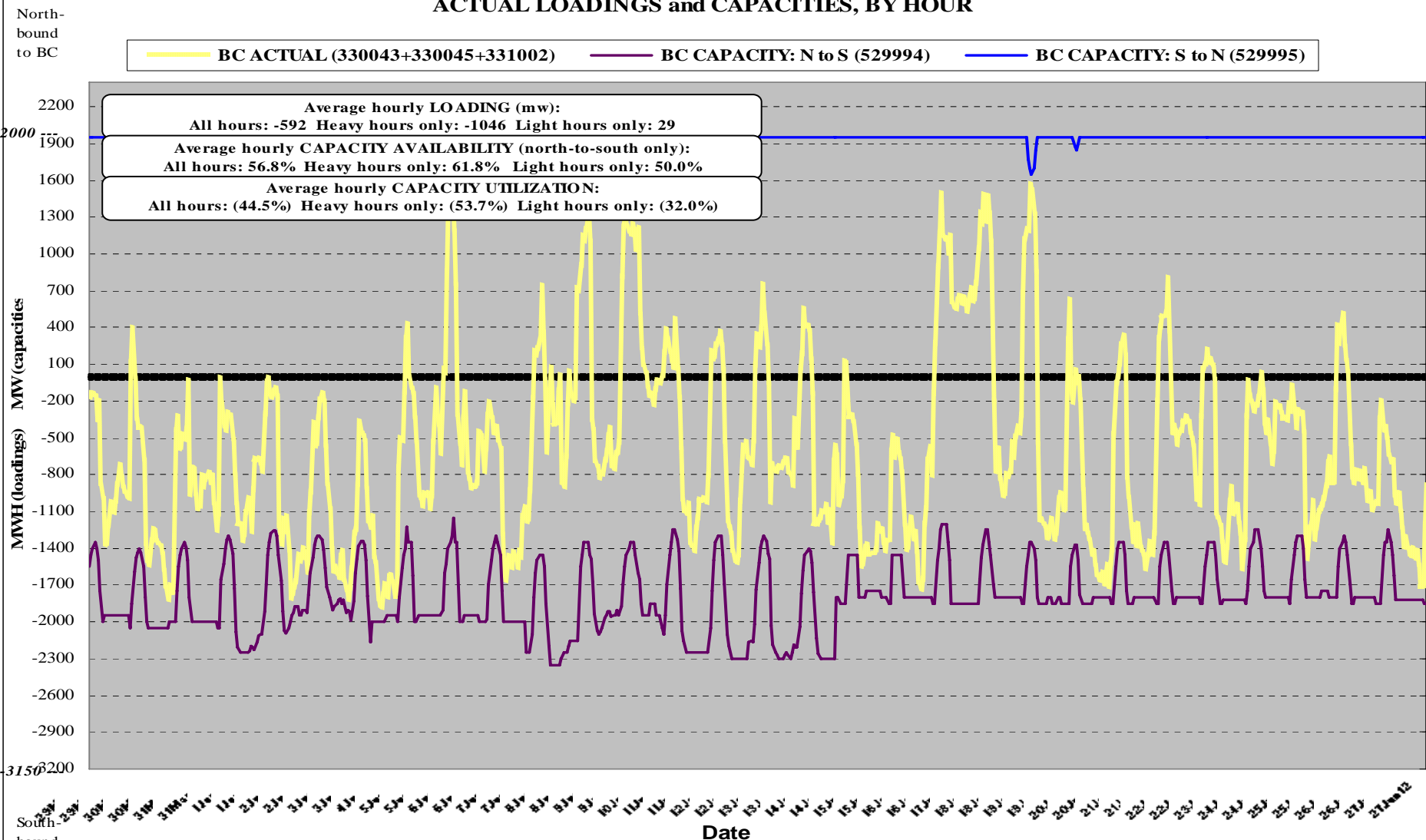
## AC+DC INTERTIE AVAILABILITY & UTILIZATION: 29MAY12 - 27JUN12 (30 days) ACTUAL LOADINGS and CAPACITIES, BY HOUR



capacity availability = actual capacity/rated capacity, capacity utilization = actual loading/actual capacity  
Source: Hourly data via RODS; Capacities are those at COB or NOB and reflect total path scheduling limit

Actuals may exceed scheduling limit as long as conditions remain within North-of-John-Day vs. COI & PDCI operating nomogram limits

### BC INTERTIE (WEST+EAST) AVAILABILITY & UTILIZATION: 29MAY12 - 27JUN12 (30 days) ACTUAL LOADINGS and CAPACITIES, BY HOUR



capacity availability = actual capacity/rated capacity, capacity utilization = actual loading/actual capacity  
 Source: Hourly data via RODS; Capacities are those as recorded by and used for scheduling, and are based on electrical limits, not considering Intertie ownership shares; Rated capacities labeled as -3150 (N-S) and 2000 (S-N)

# Contact Information

- To discuss within month commercial transactions, please contact Robert Johnson at (503) 230-3183, [rcjohnson@bpa.gov](mailto:rcjohnson@bpa.gov).
- To discuss prompt month and forward transactions, please contact Alex Spain at (503) 230-5780, [ajspain@bpa.gov](mailto:ajspain@bpa.gov) or Mark Miller at (503) 230-5780, [memiller@bpa.gov](mailto:memiller@bpa.gov).
- For additional information on Oversupply, please contact:  
Project Manager: Nita Burbank - (503) 230-3935, [nmburbank@bpa.gov](mailto:nmburbank@bpa.gov)  
Public Engagement: Maryam Asgharian - (503) 230-4413, [maasgharian@bpa.gov](mailto:maasgharian@bpa.gov)
- Overgeneration website:  
<http://www.bpa.gov/corporate/AgencyTopics/ColumbiaRiverHighWaterMgmt/>