

System Condition Update

Spring Operations Review Forum

July 27, 2012

1:00 – 2:00 p.m.

To participate in the call please dial: **(877) 336-1839**

When prompted, enter access code: 1687421



Celebrating 75 years of
serving the Northwest

Hydro Operations Update

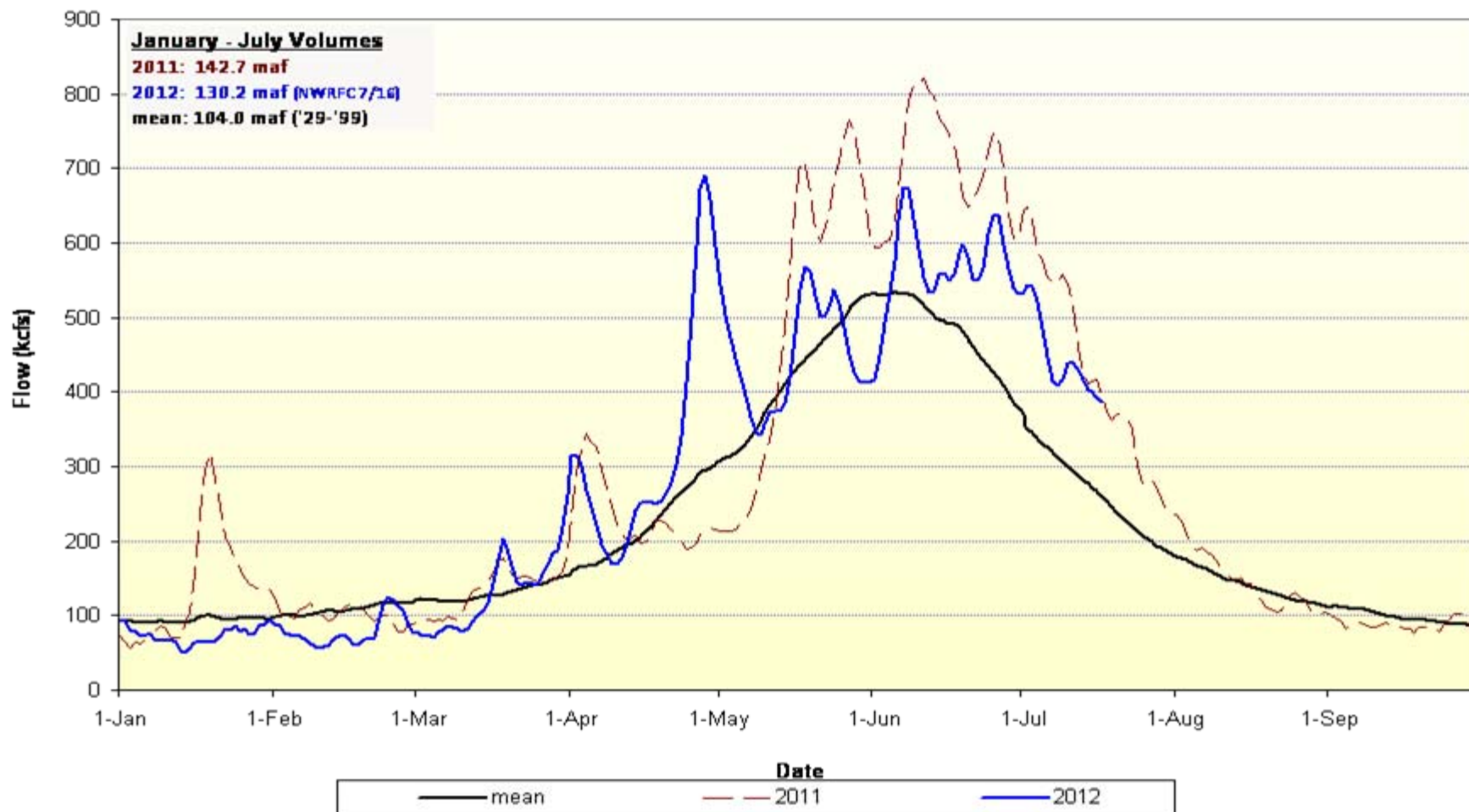
- Reservoir system is being operated to manage flows while near full and for summer flow augmentation and temperature control.
 - Most storage projects are full or within the top few feet.
 - Canadian flows are receding from record levels.
- Maximum discharge at The Dalles of 450 kcfs.
- The NW River Forecast Center's July 24, January-July Water Supply Forecast at The Dalles is 130.4 million acre-feet (122% of normal).
- Oversupply Management Protocol was implemented this week. To date, approximately 49,700 MW-hrs of wind generation have been displaced. Please refer to the external website for further details.

Actions to manage oversupply

- Last fall/winter BPA and BC Hydro released water from non-treaty storage in Canada. The space created by the releases last fall/winter has allowed Arrow outflows to be lower than they would have been absent the Non-Treaty Storage agreement. BPA and BCH stored nearly 2.8 Maf under this agreement between May 26 – July 15 to be released in August/September.
- As of July 26, BPA has acquired 66,260 MWh under the Mid-Columbia Spill Exchange agreement.
- Maximizing the amount of pump load.
- Coordinated spill on Willamette projects when possible within TDG limits.
- CGS has been reduced to 85% during periods when it was helpful to minimize spill.
- Spill due to lack of demand whenever possible within water quality standards.
- INC/DEC reserves have been occasionally reduced to manage to system operational objectives this Spring.
- Recallable energy is being used to reduce the amount of over-generation spill and OMP.

Weather and Streamflow

Natural Flows at The Dalles



Weather and Streamflow

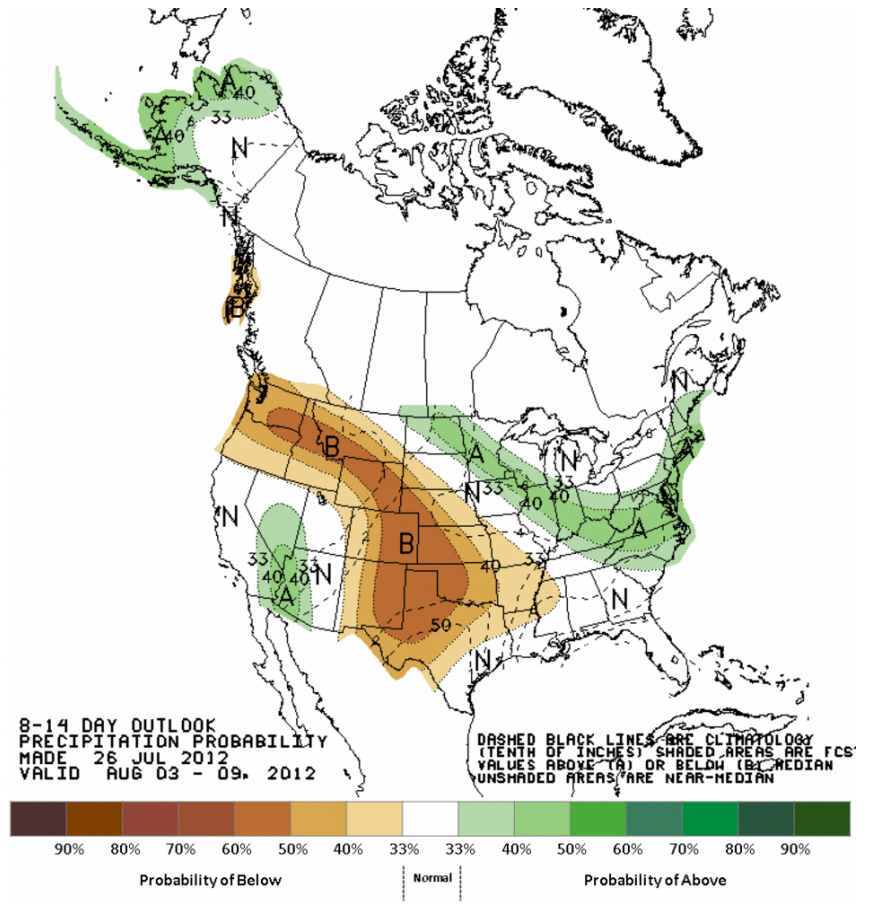
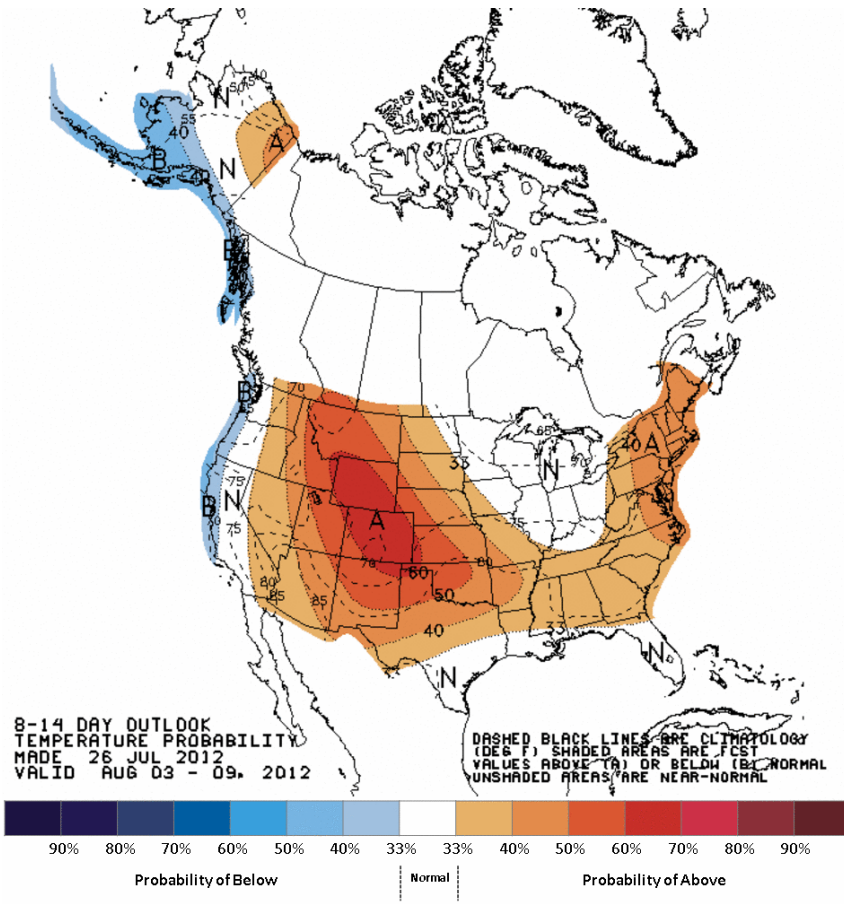
Volume remaining at selected sites (kAF)

Runoff-processor date: Jul 17
 RFC Volume Forecast: Jul 16

	<i>Jul 16</i>	<i>Jul 17</i>	
	NWRFC	Observed	Percent
January-July	ESP volcast	Since 1-Jan	Remaining
Grand Coulee	81,463	74,201	8.9%
Lower Granite	30,065	29,196	2.9%
The Dalles	130,202	121,309	6.8%

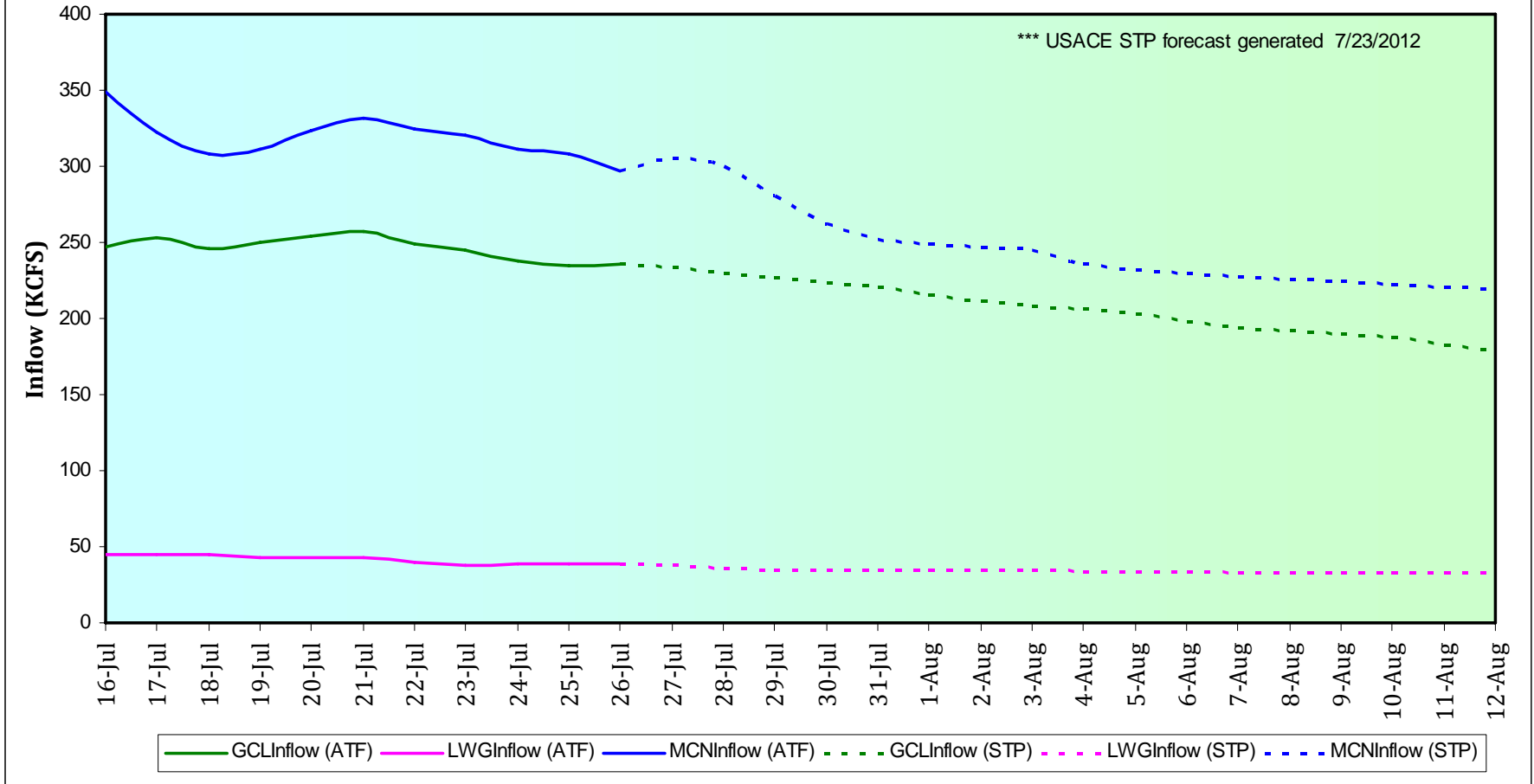
	NWRFC	Observed	Percent
April-August	ESP volcast	Since 1-Apr	Remaining
Grand Coulee	83,103	66,642	19.8%
Lower Granite	24,490	22,025	10.1%
The Dalles	122,529	101,845	16.9%

Weather and Streamflow

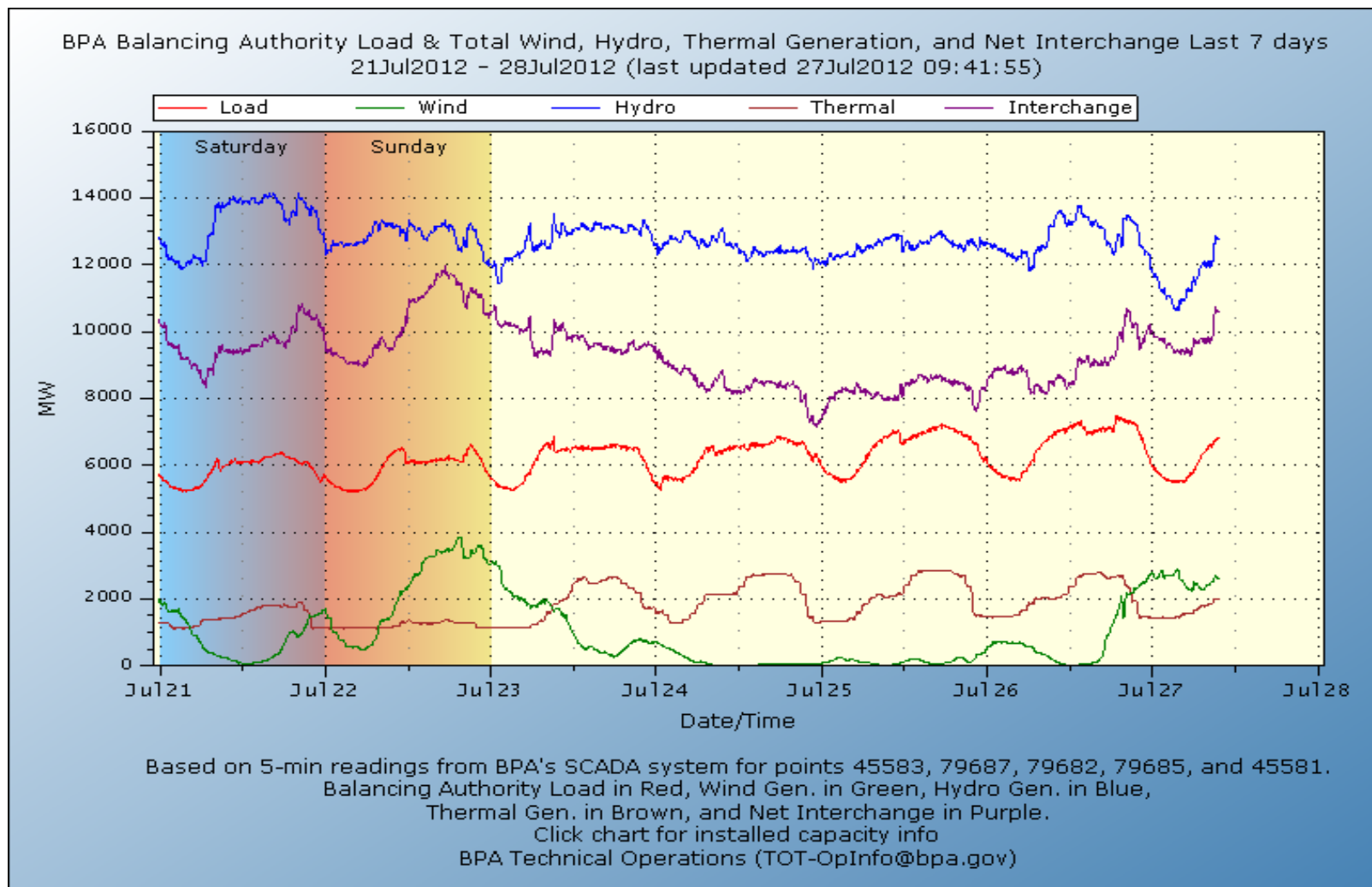


Actual and Forecasted Flows

Actual and Forecasted Inflows
 (Grand Coulee, Lower Granite and McNary Projects)



Balancing Authority Load and Total Wind, Hydro, and Thermal Generation



Transmission Updates

■ COI N>S

- 4400 MW: 7/23 HE 10 to 7/27 HE 15 due to BPA-Sand Springs: Grizzly-Summer Lake 1 500kV Line Series Capacitor Group 3.
- 4100 MW: 7/27 HE 08 to 7/27 HE 16 due to CISO-Los Banos-Gates 1 500kV Line
- 3900 MW: 8/01 HE 06 to 8/01 HE 10 due to PACW-Alvey-Dixonville 500kV Line

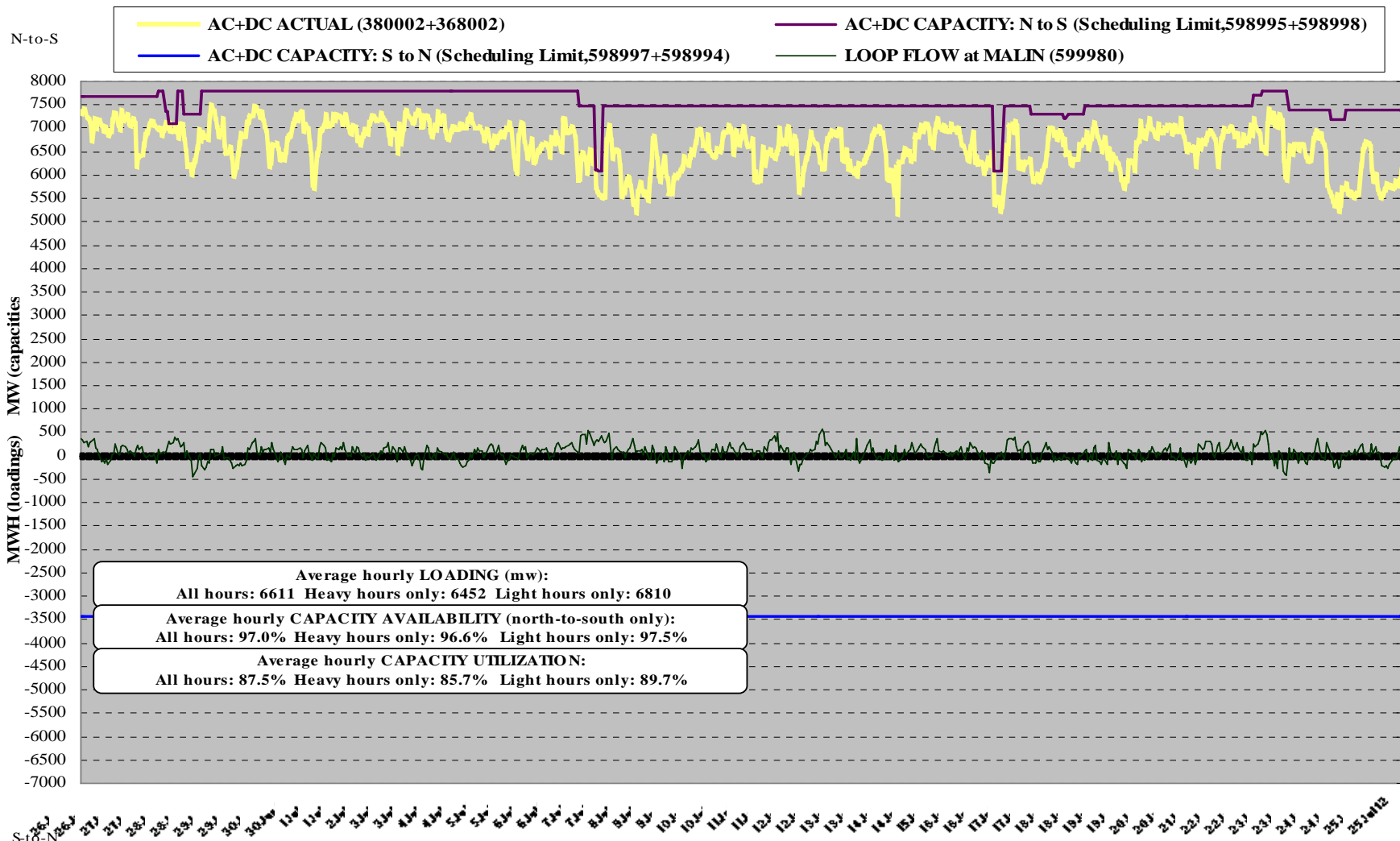
■ PDCI N>S

- 0 MW: 07/28 and 07/29 HE 05 to HE 21 BPA-Celilo-Sylmar Pole 3&4 1000kV Line

■ NI S>N

- ~900 MW: 7/23 HE08 to 8/03 HE 16 due to BPA-Chief Joseph-Monroe 1 500kV Line and various other combination of outages. Prescheduled forecasted capacity between 700 MW and 1250 MW.

AC+DC INTERTIE AVAILABILITY & UTILIZATION: 26JUN12 - 25JUL12 (30 days) ACTUAL LOADINGS and CAPACITIES, BY HOUR



Average hourly LOADING (mw):
 All hours: 6611 Heavy hours only: 6452 Light hours only: 6810

Average hourly CAPACITY AVAILABILITY (north-to-south only):
 All hours: 97.0% Heavy hours only: 96.6% Light hours only: 97.5%

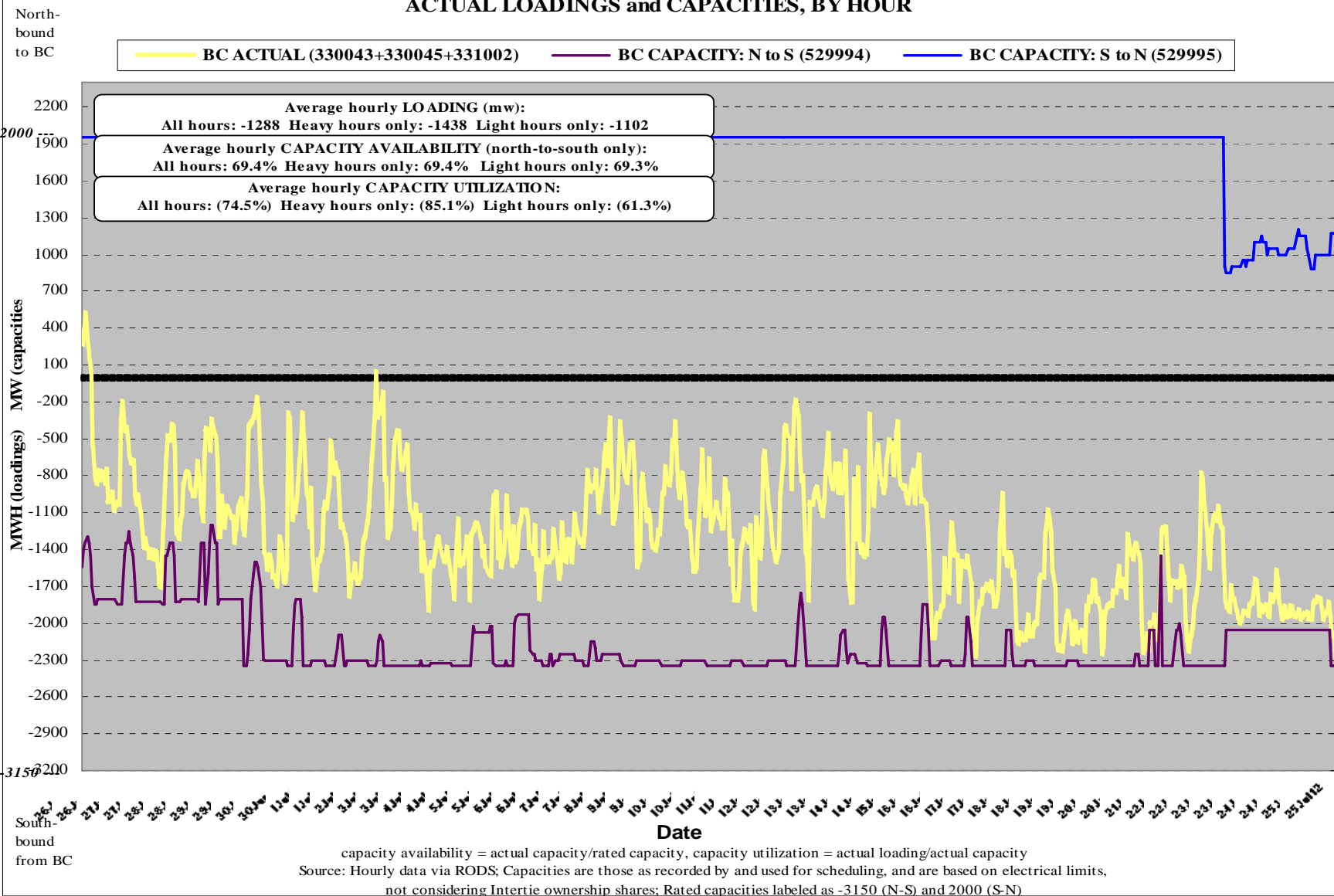
Average hourly CAPACITY UTILIZATION:
 All hours: 87.5% Heavy hours only: 85.7% Light hours only: 89.7%

capacity availability = actual capacity/rated capacity, capacity utilization = actual loading/actual capacity
 Source: Hourly data via RODS; Capacities are those at COB or NOB and reflect total path scheduling limit

Actuals may exceed scheduling limit as long as conditions remain within North-of-John-Day vs. COI & PDCI operating nomogram limits

BC INTERTIE (WEST+EAST) AVAILABILITY & UTILIZATION: 26JUN12 - 25JUL12 (30 days)

ACTUAL LOADINGS and CAPACITIES, BY HOUR



Contact Information

- To discuss within month commercial transactions, please contact Robert Johnson at (503) 230-3183, rcjohnson@bpa.gov.
- To discuss prompt month and forward transactions, please contact Alex Spain at (503) 230-5780, ajspain@bpa.gov or Mark Miller at (503) 230-5780, memiller@bpa.gov.
- For additional information on Oversupply, please contact:
Project Manager: Nita Burbank - (503) 230-3935, nmburbank@bpa.gov
Public Engagement: Maryam Asgharian - (503) 230-4413, maasgharian@bpa.gov
- Overgeneration website:
<http://www.bpa.gov/corporate/AgencyTopics/ColumbiaRiverHighWaterMgmt/>