

System Condition Update

Spring Operations Review Forum

April 27, 2012

1:00 – 2:00 p.m.

To participate in the call please dial: **(877) 336-1839**

When prompted, enter access code: 1687421



Hydro Operations Update

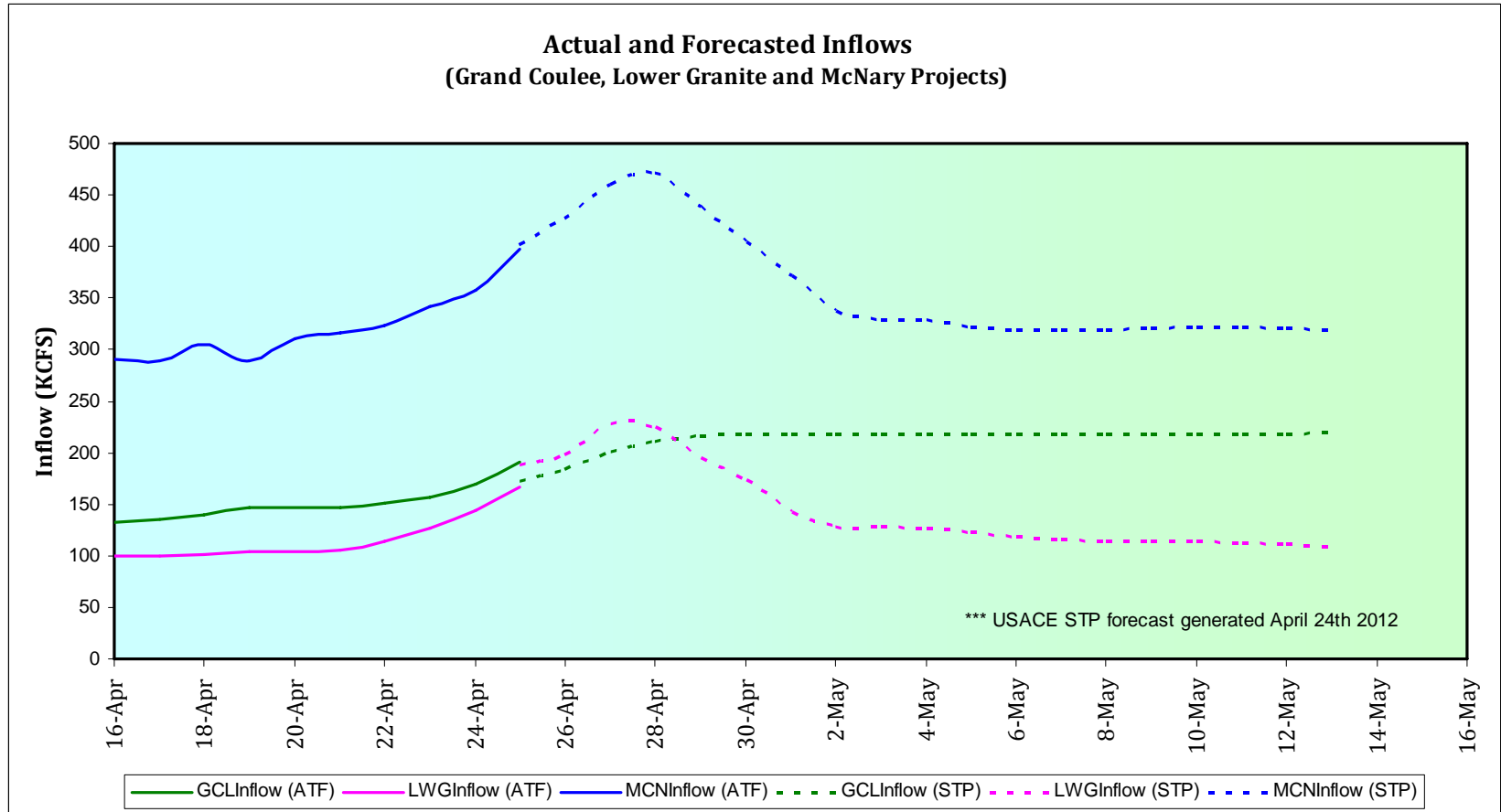
The Federal Columbia River Power System is being operated for system wide flood control objectives.

- Reservoir operations transitioned from drafting to refill on April 24.
- Operating the system for flood control operations of 410-430 kcfs at Bonneville through Monday, April 30.
- The NW River Forecast Center's April 22, January-July Water Supply Forecast at The Dalles is 117.6 million acre-feet.

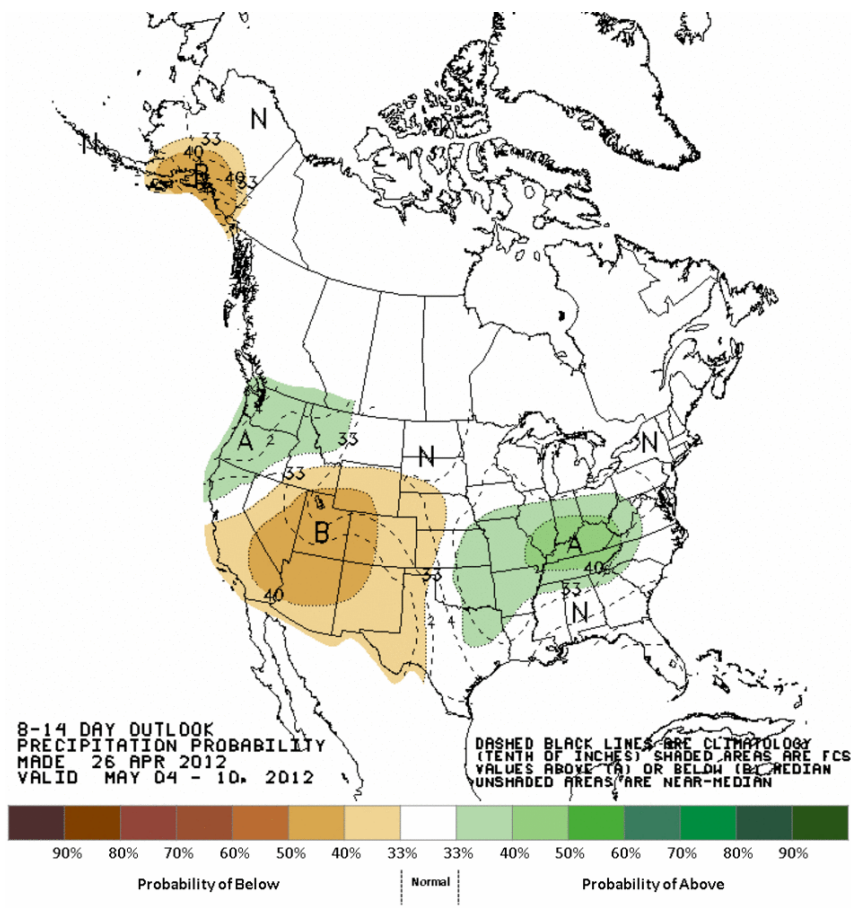
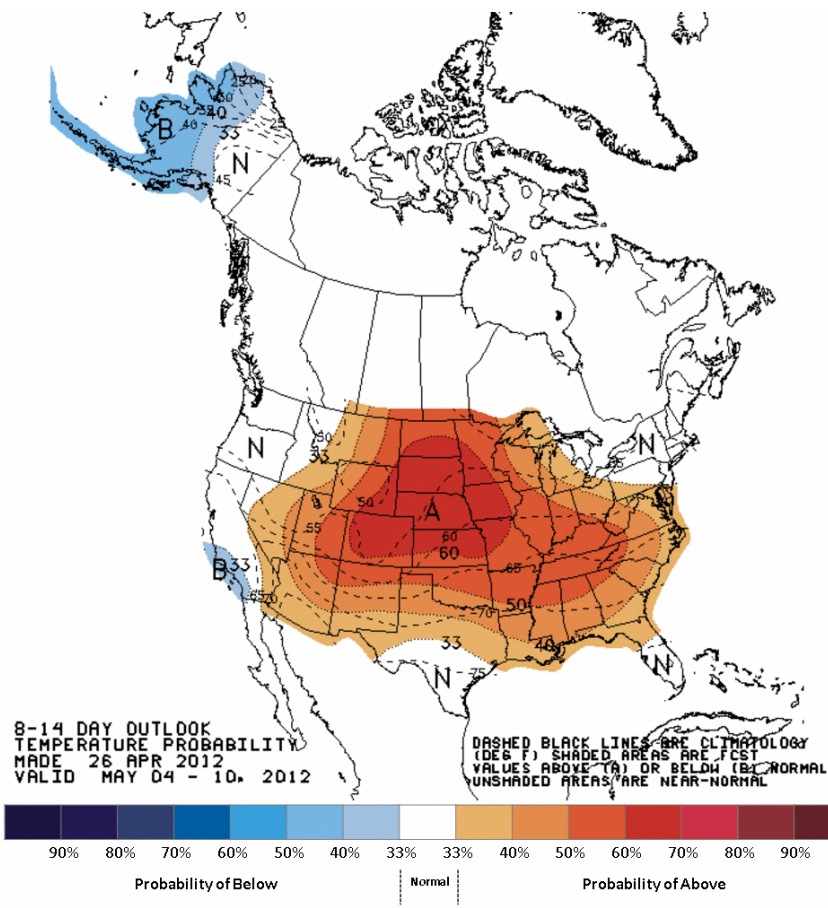
Actions to manage overgeneration

- As of April 25, BPA has acquired 61,500 MWh under the Mid-Columbia Spill Exchange agreement.
- Maximizing the amount of pump load.
- Have moved non-essential generator and transmission maintenance outages out of May and June.
- Coordinated spill on Willamette projects.
- CGS has been reduced to 85% during periods when it was helpful to minimize spill.
- Spill due to lack of demand
- BPA has developed and is now using a new product that allows for recallable energy that is helping to reduce the amount of over-generation spill and OMP.
- Moderate temperatures in the region combined with high flows have lead to some small displacement of thermal generators in order to manage water quality.
- INC/DEC reserves have been reduced occasionally this past week to manage TDG levels and reduce the chance of implementing OMP.

Actual and Forecasted Flows

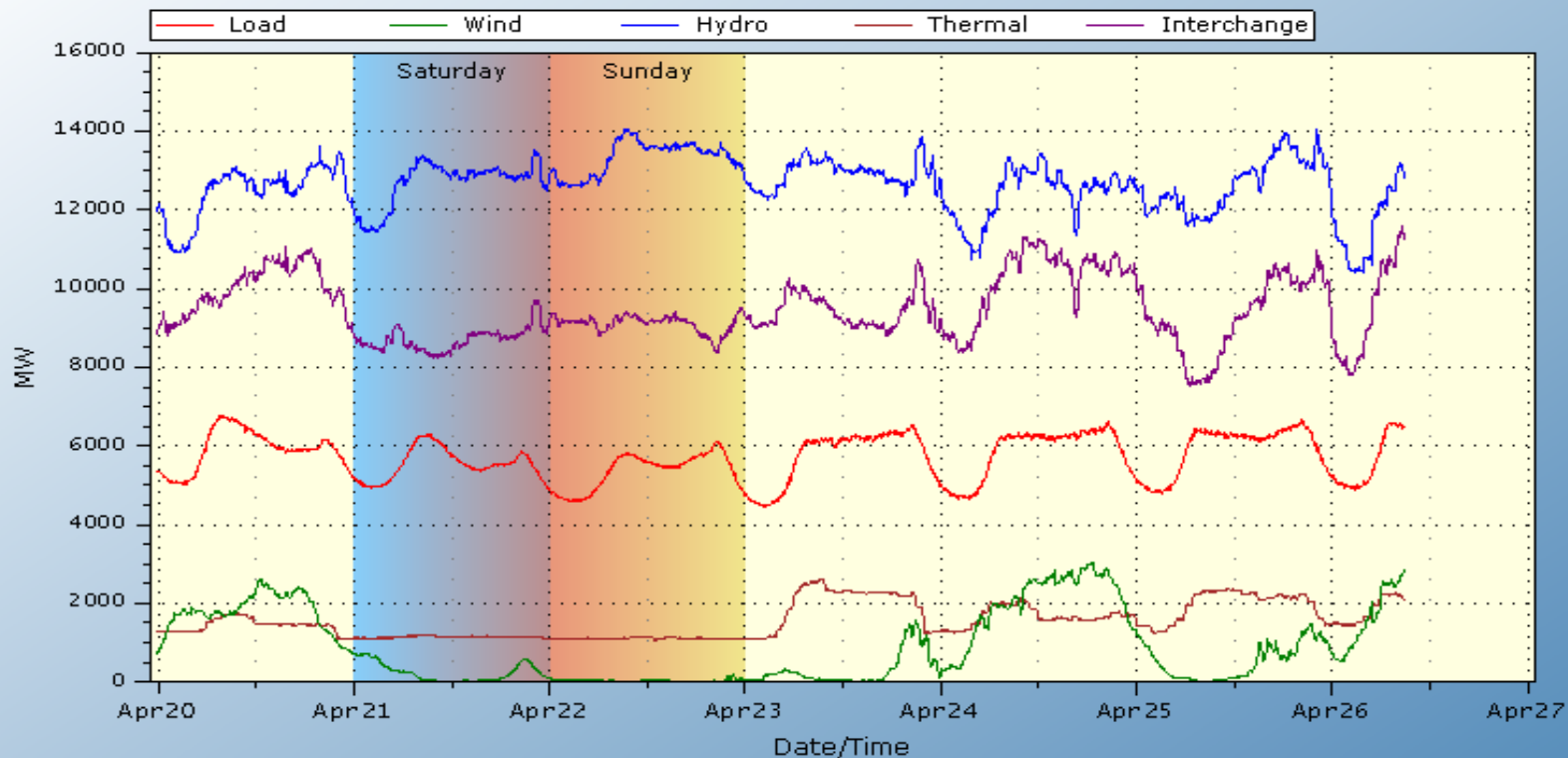


Weather and Streamflow



Balancing Authority Load and Total Wind, Hydro, and Thermal Generation

BPA Balancing Authority Load & Total Wind, Hydro, Thermal Generation, and Net Interchange Last 7 days
20Apr2012 - 27Apr2012 (last updated 26Apr2012 08:56:51)



Based on 5-min readings from BPA's SCADA system for points 45583, 79687, 79682, 79685, and 45581.
Balancing Authority Load in Red, Wind Gen. in Green, Hydro Gen. in Blue,
Thermal Gen. in Brown, and Net Interchange in Purple.
Click chart for installed capacity info
BPA Technical Operations (TOT-OpInfo@bpa.gov)

Transmission Updates

■ COI N>S

- 4050 MW: Through 6/1 due to CAISO Tracy-Los Banos 500kV Line.
- 3500 MW: 4/25 to 4/26 due to CAISO Olinda-Tracy 500kV Line Series Caps at Maxwell.

■ PDCI N>S

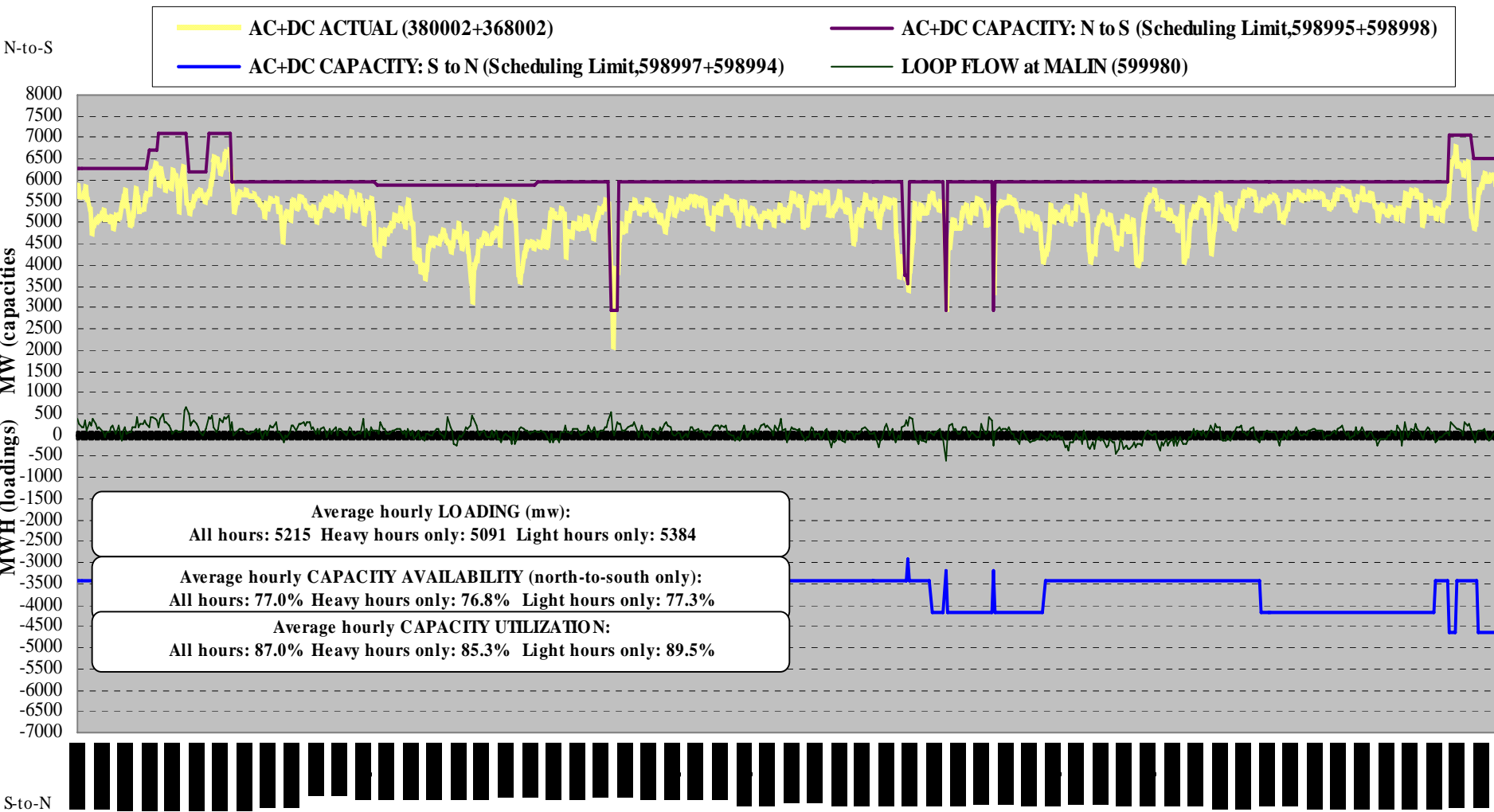
- 2990 MW : At rated capacity next seven days.

■ NI S>N

- 1150 to
- 1950 MW: Preschedule forecasted capacity reduced over next seven days for a few hours due to nomogram deductions for various outages including SCL Bothell-SnoKing #1 & 2 Lines, SCL Bothell 230/115kV Bank # 63, SCL Massachusetts-Union #1 115KV Line, SCL Massachusetts-Union #2 115KV Line, SCL Canal-Broad ST 115KV Line. Majority of hours at or near rated capacity.

AC+DC INTERTIE AVAILABILITY & UTILIZATION: 27MAR12 - 25APR12 (30 days)

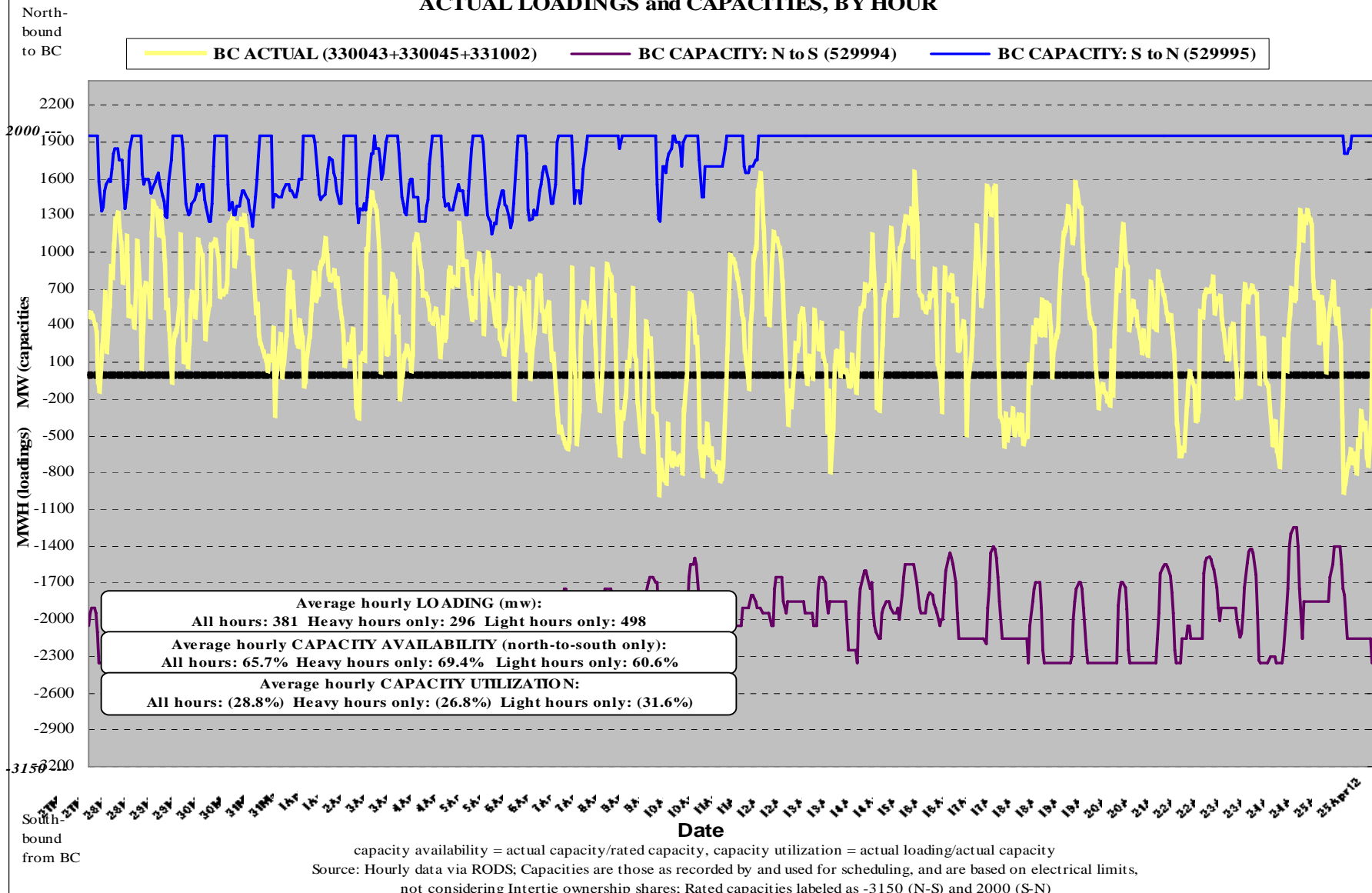
ACTUAL LOADINGS and CAPACITIES, BY HOUR



Date

capacity availability = actual capacity/rated capacity, capacity utilization = actual loading/actual capacity
 Source: Hourly data via RODS; Capacities are those at COB or NOB and reflect total path scheduling limit
 Actuals may exceed scheduling limit as long as conditions remain within North-of-John-Day vs. COI & PDCI operating nomogram limits

BC INTERTIE (WEST+EAST) AVAILABILITY & UTILIZATION: 27MAR12 - 25APR12 (30 days)
ACTUAL LOADINGS and CAPACITIES, BY HOUR



Contact Information

- To discuss within month commercial transactions, please contact Robert Johnson at (503) 230-3183, rcjohnson@bpa.gov.
- To discuss prompt month and forward transactions, please contact Alex Spain at (503) 230-5780, ajspain@bpa.gov or Mark Miller at (503) 230-5780, memiller@bpa.gov.
- For additional information on Oversupply, please contact:
Project Manager: Nita Burbank - (503) 230-3935, nmburbank@bpa.gov
Public Engagement: Maryam Asgharian - (503) 230-4413, maasgharian@bpa.gov
- Overgeneration Web site:
<http://www.bpa.gov/corporate/AgencyTopics/ColumbiaRiverHighWaterMgmt/>