

System Condition Update

Spring Operations Review Forum

June 22, 2012

1:00 – 2:00 p.m.

To participate in the call please dial: **(877) 336-1839**

When prompted, enter access code: 1687421



Celebrating 75 years of
serving the Northwest

Hydro Operations Update

The Federal Columbia River Power System is being operated on a controlled refill.

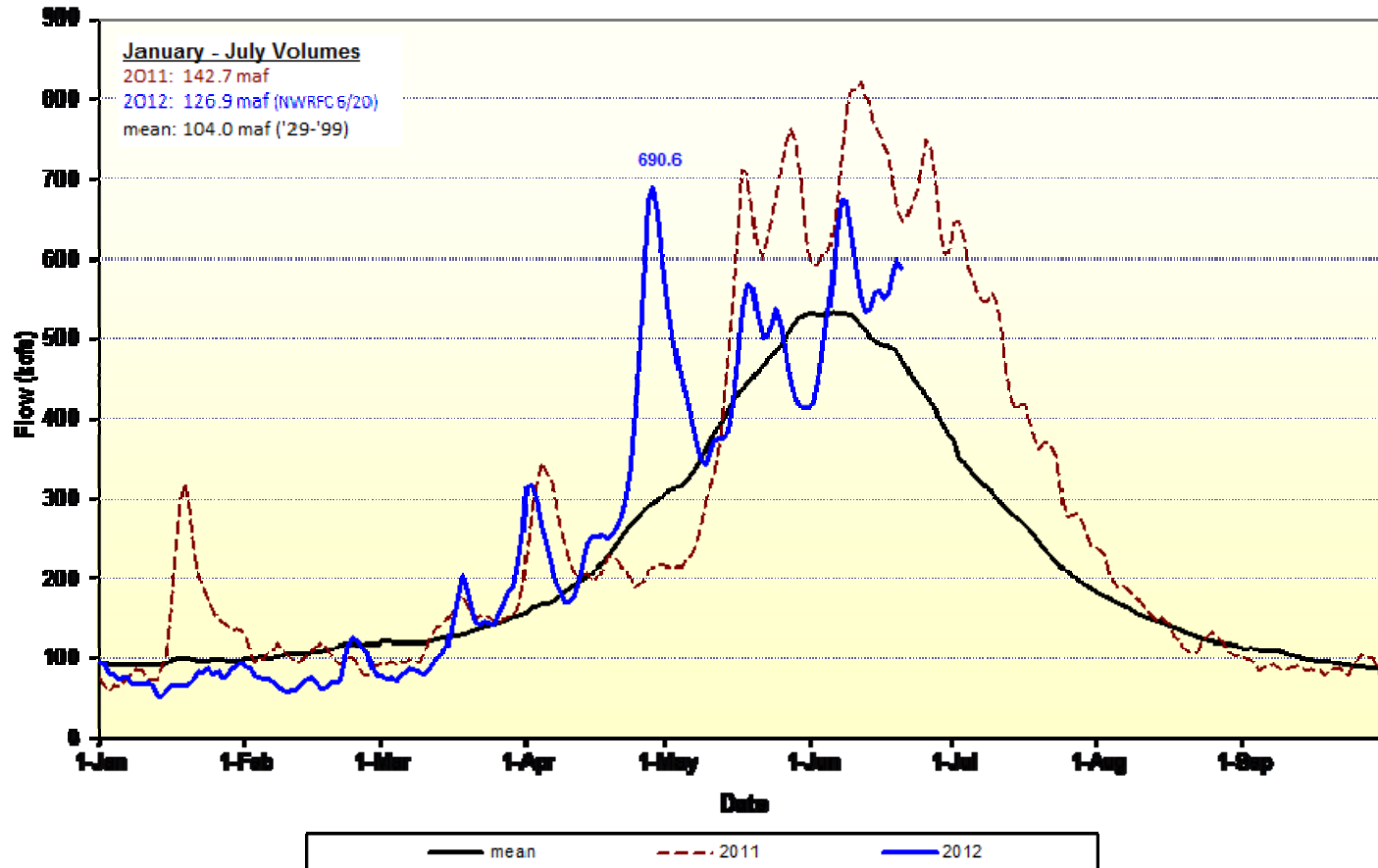
- Reservoir operations are operating to refill by late June/Early July.
 - Grand Coulee filled nearly 30 feet since June 1 and is currently at 1283.8'.
 - Max elevation of 1285' through June 22; 1288' through June 30 (1290' is full)
 - Libby, Hungry Horse, Dworshak all approaching full
- Continue to operate the system for flood control/refill operations. Maximum discharge at The Dalles of 420 kcfs.
- The NW River Forecast Center's June 20, January-July Water Supply Forecast at The Dalles is 126.9 million acre-feet.
 - Up from 117.8 Maf on June 3
- Oversupply Management Protocol has not been implemented this week. To date, approximately 20,600 MW-hrs of wind generation have been displaced. Please refer to the external website for further details.

Actions to manage oversupply

- Last fall/winter BPA and BC Hydro released water from non-treaty storage in Canada. The space created by the releases last fall/winter has allowed Arrow outflows to be lower than they would have been absent the Non-Treaty Storage agreement. BPA and BCH stored 1.3 Maf under this agreement the week of May 26 – June 29 to be released in August.
- As of June 14, BPA has acquired 66,260 MWh under the Mid-Columbia Spill Exchange agreement.
- Maximizing the amount of pump load.
- Have moved non-essential generator and transmission maintenance outages out of May and June.
- Coordinated spill on Willamette projects.
- CGS has been reduced to 85% during periods when it was helpful to minimize spill.
- Spill due to lack of demand.
- INC/DEC reserves have been occasionally reduced to manage to system operational objectives this Spring.

Weather and Streamflow

Natural Flows at The Dalles



Weather and Streamflow

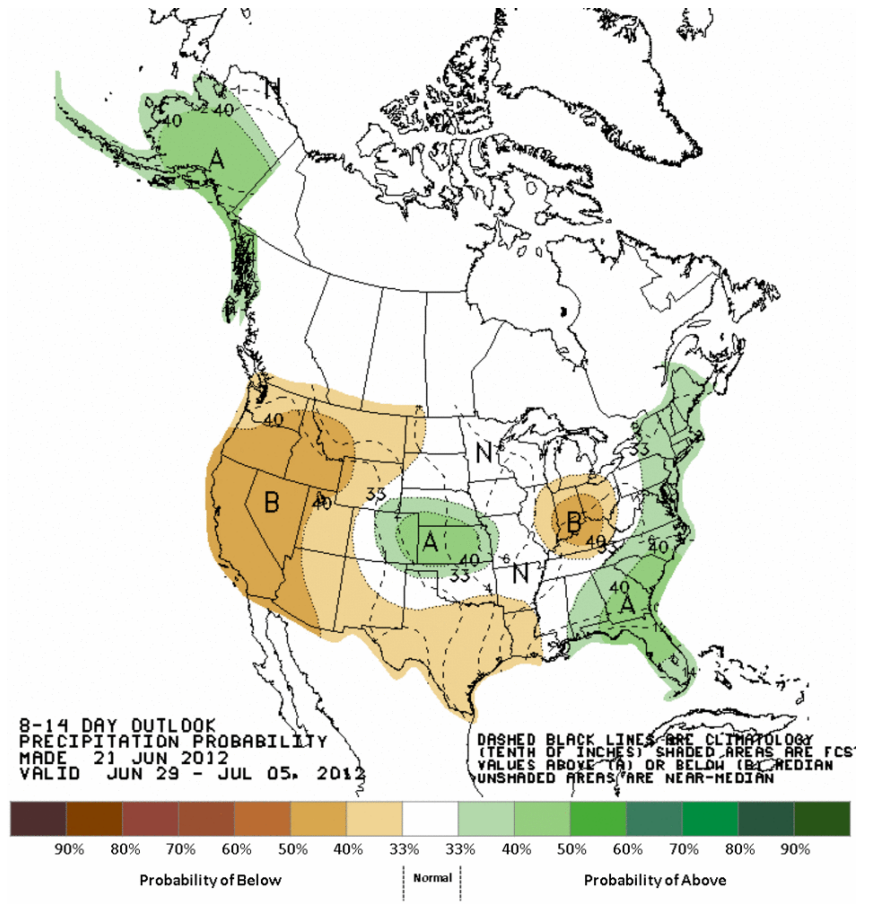
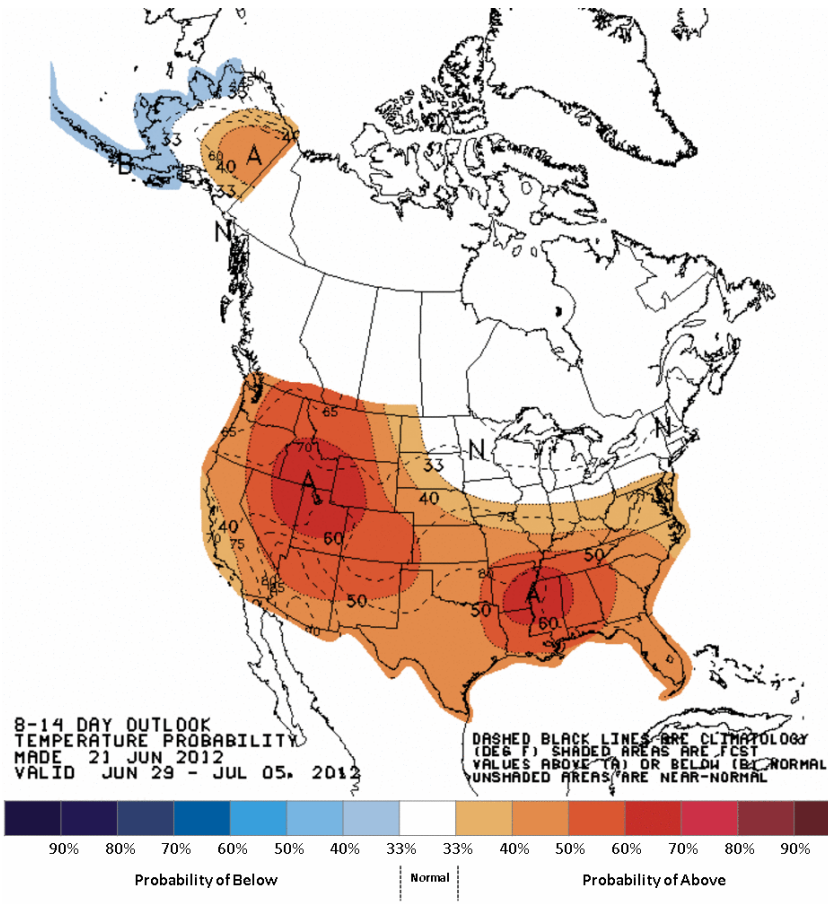
Volume remaining at selected sites (kAF)

Runoff-processor date: Jun 19
 RFC Volume Forecast: Jun 20

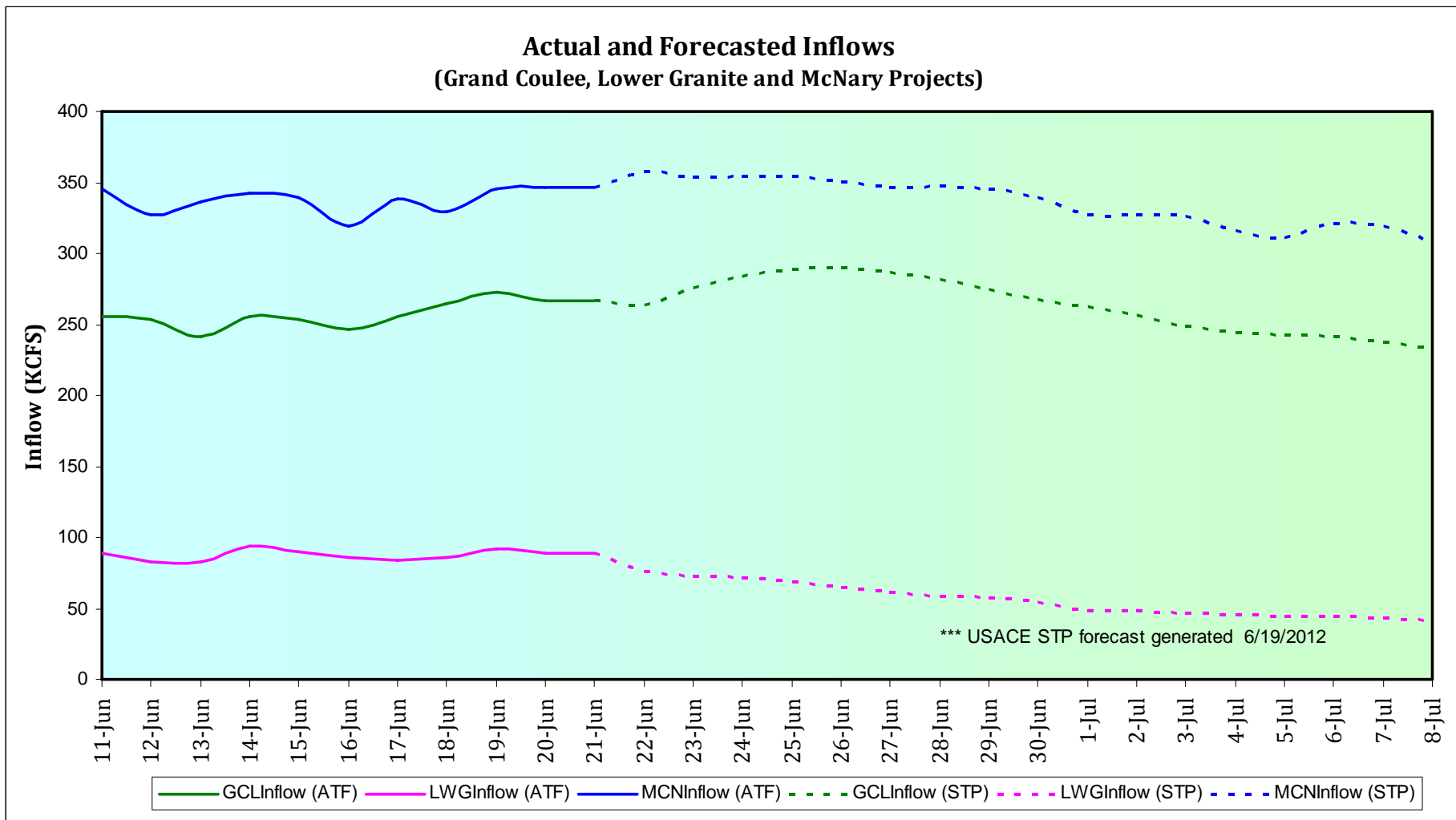
	<i>Jun 20</i>	<i>Jun 19</i>		
	NWRFC	Observed	Percent	
January-July	ESP volcast	Since 1-Jan	Remaining	Last week
Grand Coulee	78,682	52,020	33.9%	39.5%
Lower Granite	29,729	25,940	12.7%	15.1%
The Dalles	126,922	92,636	27.0%	31.2%

	NWRFC	Observed	Percent	
April-August	ESP volcast	Since 1-Apr	Remaining	Last week
Grand Coulee	79,657	44,461	44.2%	50.3%
Lower Granite	24,097	18,769	22.1%	25.1%
The Dalles	118,529	73,172	38.3%	43.3%

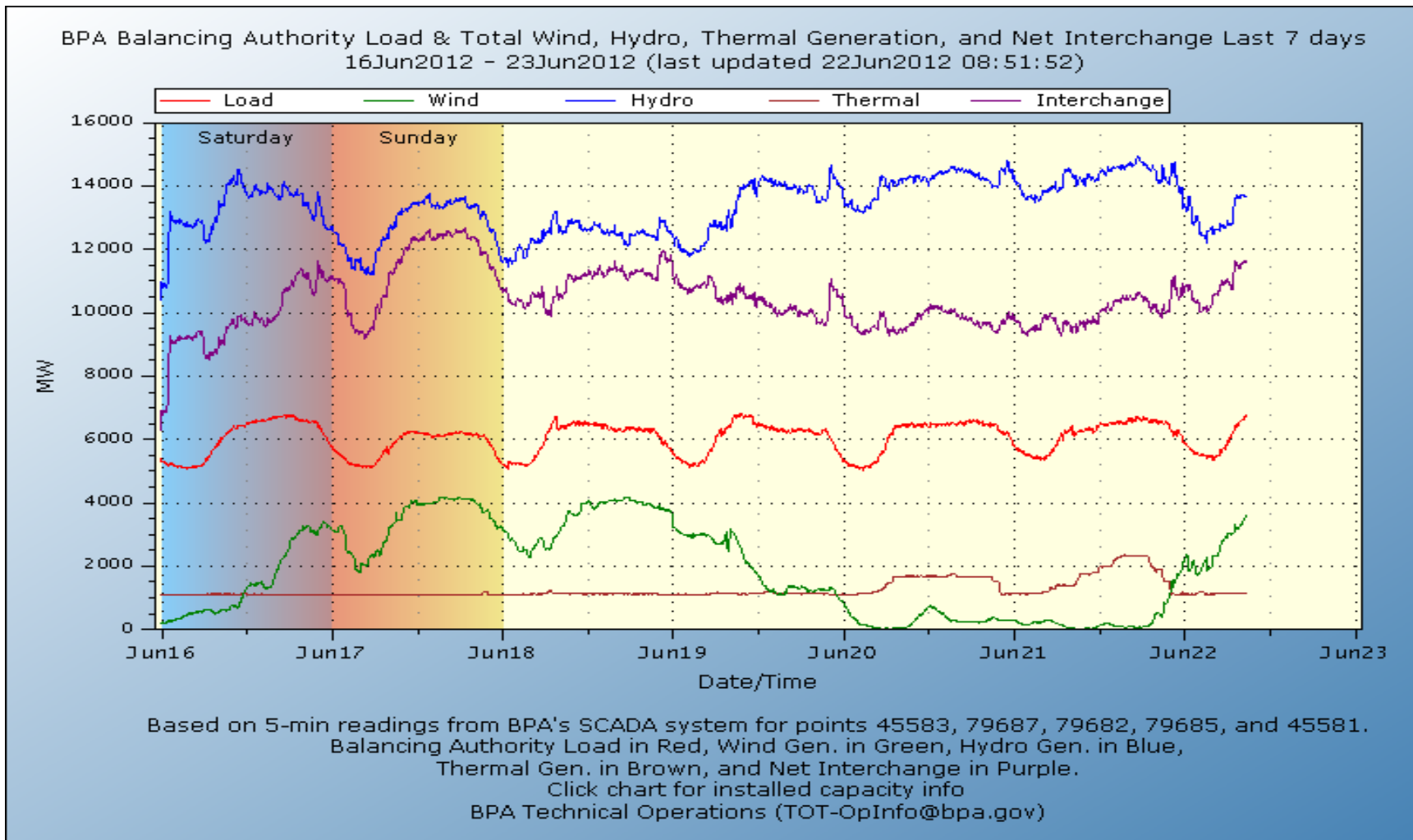
Weather and Streamflow



Actual and Forecasted Flows



Balancing Authority Load and Total Wind, Hydro, and Thermal Generation



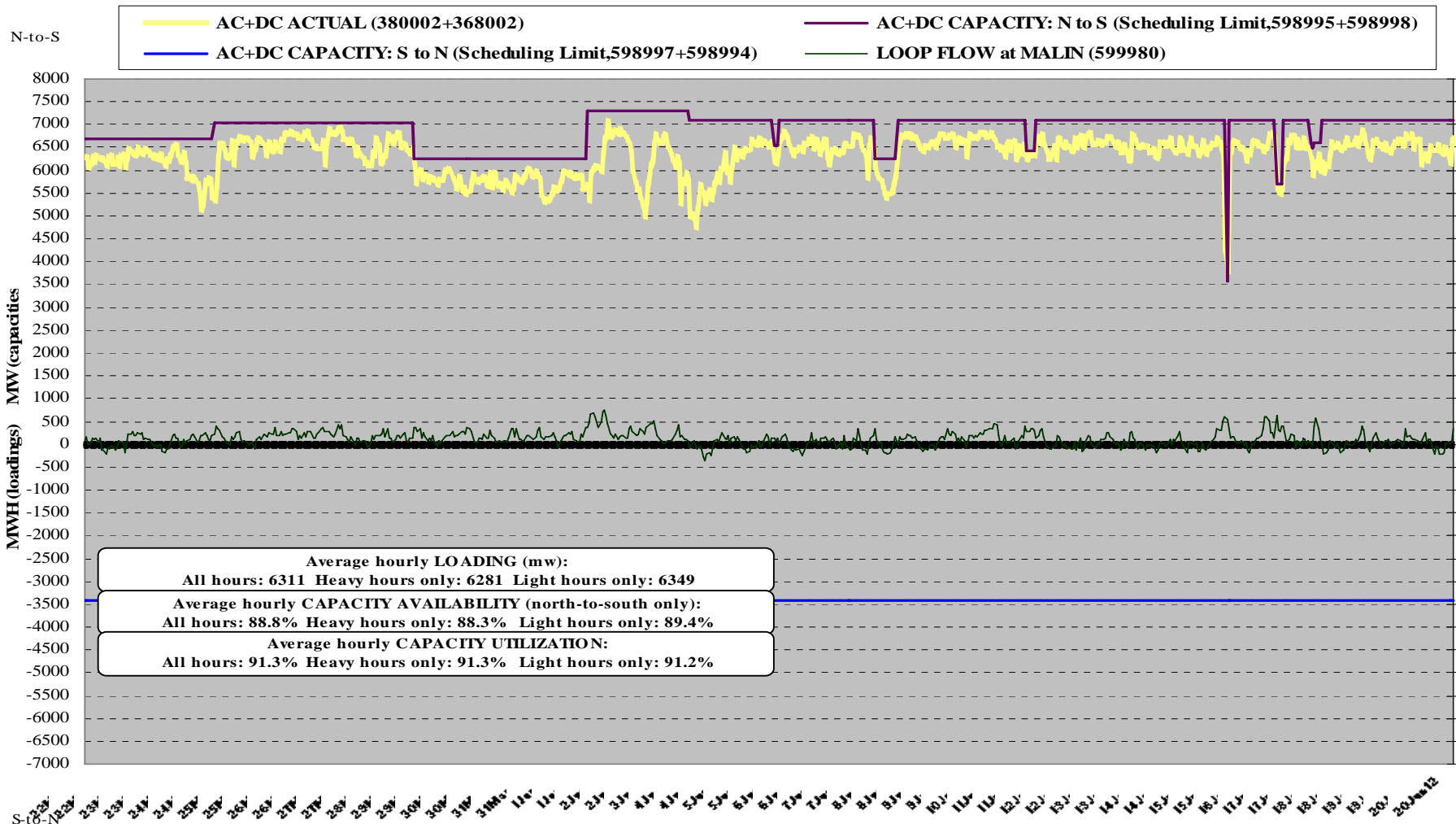
Transmission Updates

- **COI N>S**
 - 4100 MW: Through 6/22 due to CISO-Los Banos-Gates 500kV Line.
 - 4050 MW: 6/26 HE 06 to HE 18 due to CISO-Tesla-Los Banos 1 500kV Line.

- **PDCI N>S**
 - 2990 MW: At rated capacity next seven days.

- **NI S>N**
 - 1950 MW: Nomogram deductions seen in preschedule forecast reduce capacity as low as ~1700 MW over various hours.

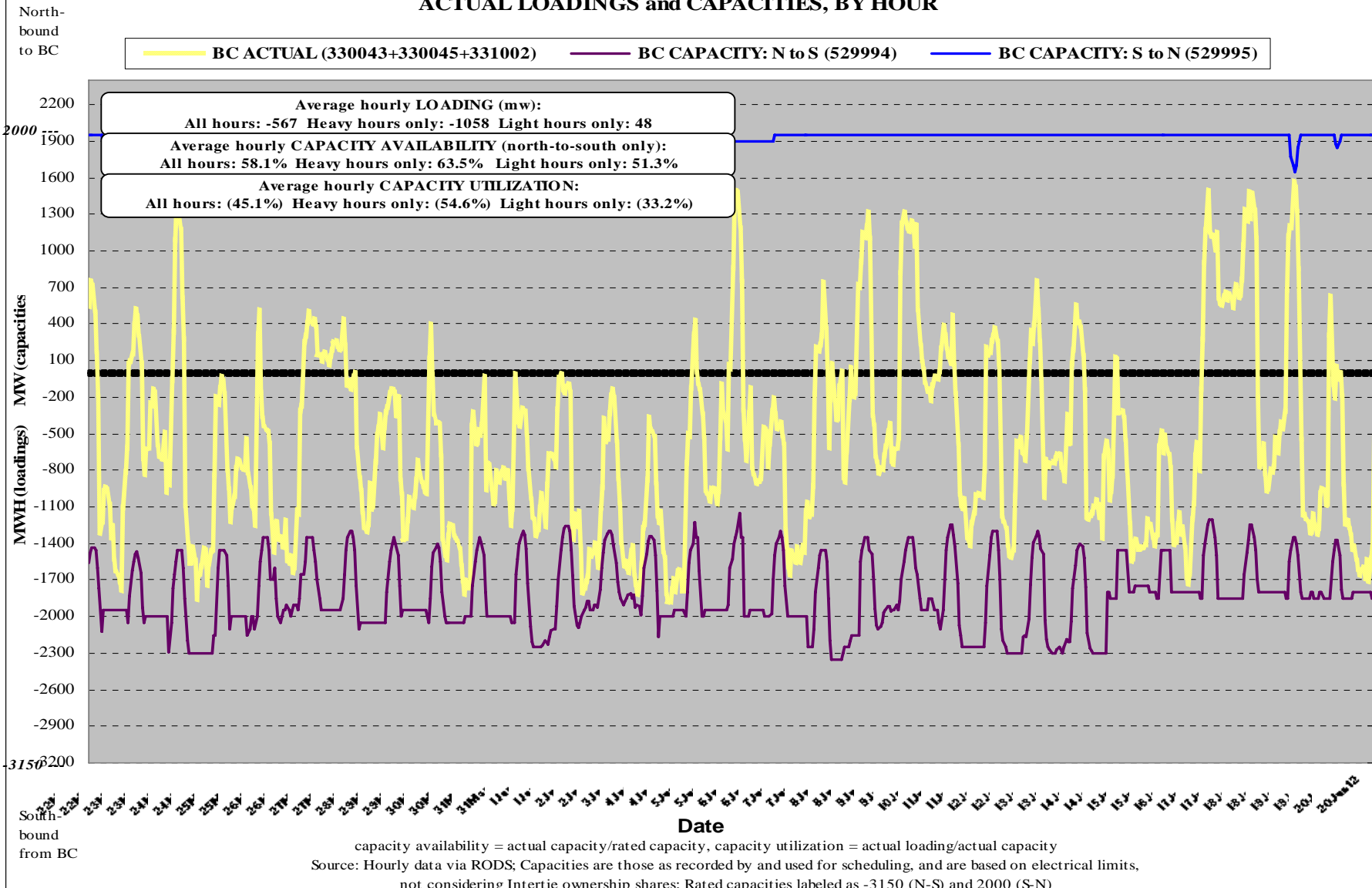
AC+DC INTERTIE AVAILABILITY & UTILIZATION: 22MAY12 - 20JUN12 (30 days) ACTUAL LOADINGS and CAPACITIES, BY HOUR



capacity availability = actual capacity/rated capacity, capacity utilization = actual loading/actual capacity
Source: Hourly data via RODS; Capacities are those at COB or NOB and reflect total path scheduling limit

Actuals may exceed scheduling limit as long as conditions remain within North-of-John-Day vs. COI & PDCI operating nomogram limits

BC INTERTIE (WEST+EAST) AVAILABILITY & UTILIZATION: 22MAY12 - 20JUN12 (30 days)
ACTUAL LOADINGS and CAPACITIES, BY HOUR



Contact Information

- To discuss within month commercial transactions, please contact Robert Johnson at (503) 230-3183, rcjohnson@bpa.gov.
- To discuss prompt month and forward transactions, please contact Alex Spain at (503) 230-5780, ajspain@bpa.gov or Mark Miller at (503) 230-5780, memiller@bpa.gov.
- For additional information on Oversupply, please contact:
Project Manager: Nita Burbank - (503) 230-3935, nmburbank@bpa.gov
Public Engagement: Maryam Asgharian - (503) 230-4413, maasgharian@bpa.gov
- Overgeneration website:
<http://www.bpa.gov/corporate/AgencyTopics/ColumbiaRiverHighWaterMgmt/>