

System Condition Update

Spring Operations Review Forum

July 13, 2012

1:00 – 2:00 p.m.

To participate in the call please dial: **(877) 336-1839**

When prompted, enter access code: 1687421



Celebrating 75 years of
serving the Northwest

Hydro Operations Update

The Federal Columbia River Power System is being operated for flood control.

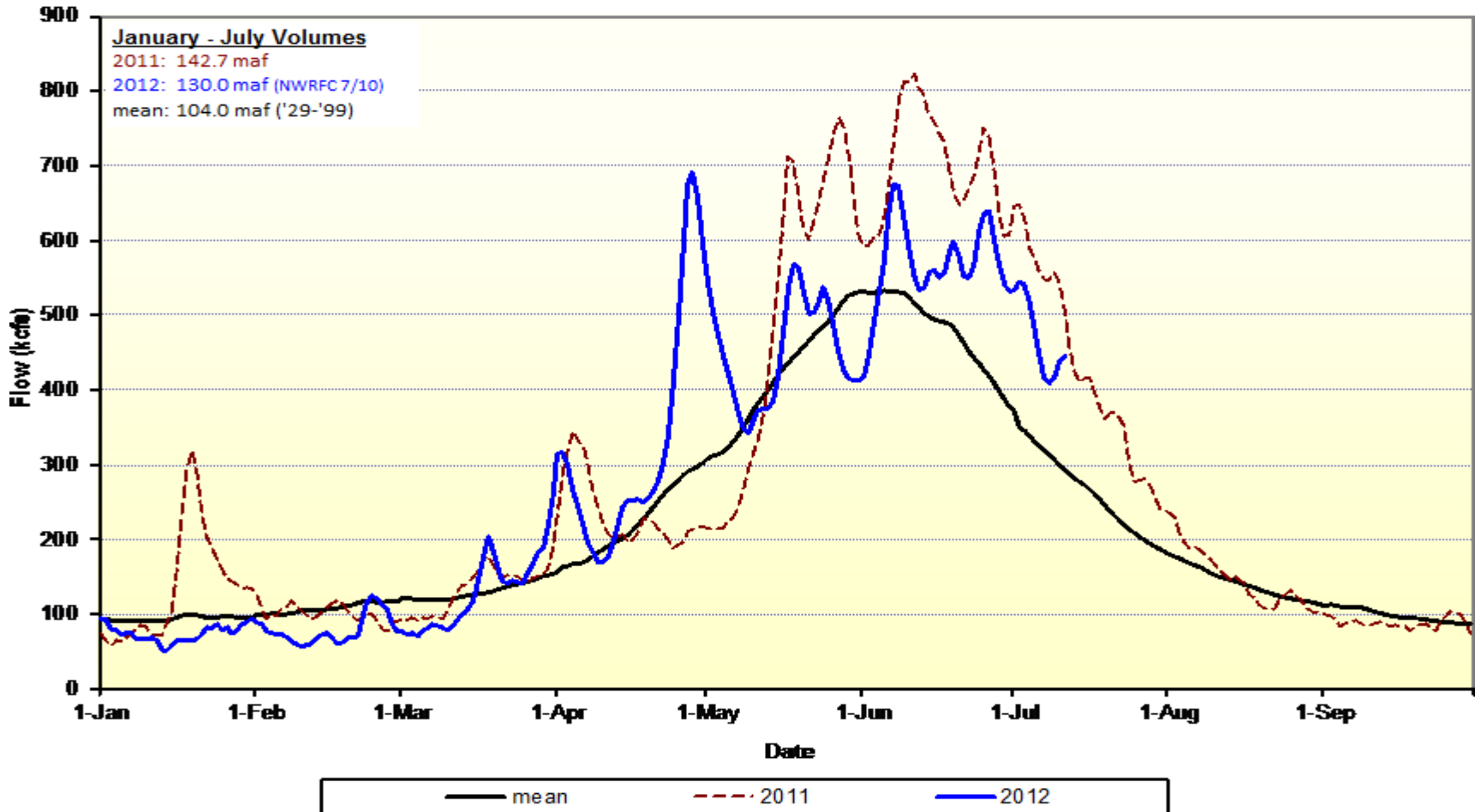
- Reservoir operations are operating to refill by late June/Early July. Transition to operating for downstream flood mitigation and, as stream flows recede, draft will begin for summer flow augmentation.
 - Grand Coulee touched full last weekend and currently passing inflow.
 - All storage projects are, or are very near, full.
 - Libby, Hungry Horse, and Arrow have all been surcharged (allowed to fill higher than normal max elevation) in order to mitigate flooding downstream.
 - Sustained river flows in Canada are at or near record levels.
 - Very wet June, 300-350% of normal in some areas.
- Maximum discharge at The Dalles of 450 kcfs.
- The NW River Forecast Center's July 10, January-July Water Supply Forecast at The Dalles is 130.0 million acre-feet.
- Oversupply Management Protocol has not been implemented this week. To date, approximately 37,400 MW-hrs of wind generation have been displaced. Please refer to the external website for further details.

Actions to manage oversupply

- Last fall/winter BPA and BC Hydro released water from non-treaty storage in Canada. The space created by the releases last fall/winter has allowed Arrow outflows to be lower than they would have been absent the Non-Treaty Storage agreement. BPA and BCH stored nearly 2.8 Maf under this agreement between May 26 – July 15 to be released in August/September.
- As of June 14, BPA has acquired 66,260 MWh under the Mid-Columbia Spill Exchange agreement.
- Maximizing the amount of pump load.
- Coordinated spill on Willamette projects.
- CGS has been reduced to 85% during periods when it was helpful to minimize spill.
- Spill due to lack of demand whenever possible within water quality standards.
- INC/DEC reserves have been occasionally reduced to manage to system operational objectives this Spring.
- Recallable energy is being used to reduce the amount of over-generation spill and OMP.

Weather and Streamflow

Natural Flows at The Dalles



Weather and Streamflow

Volume remaining at selected sites (kAF)

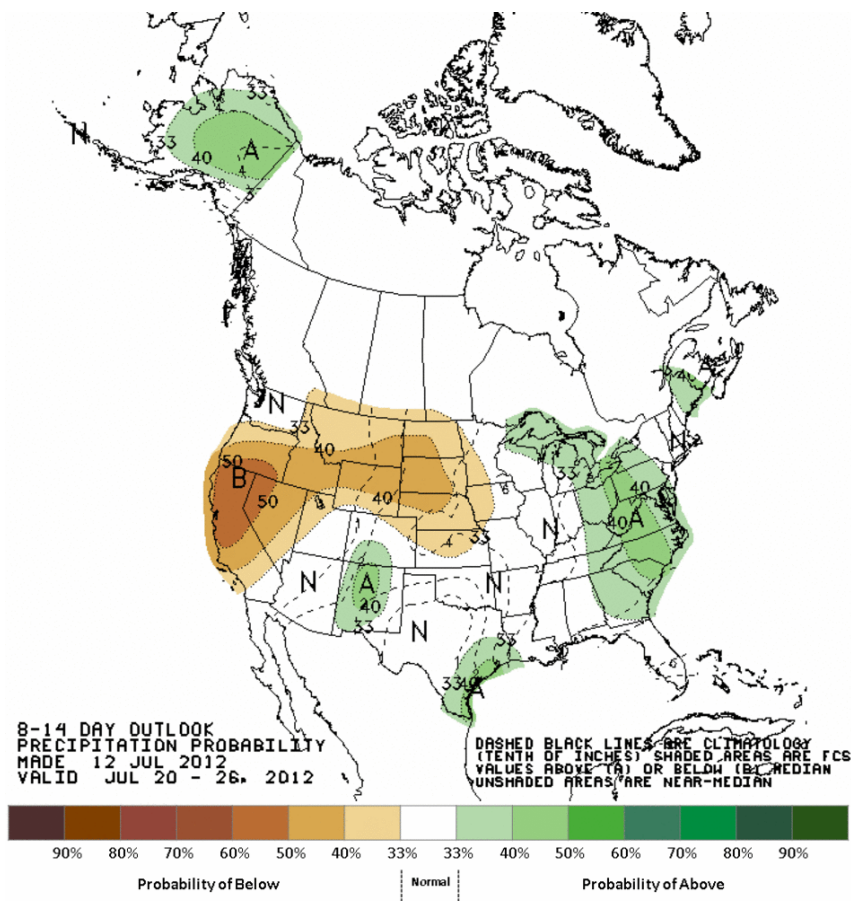
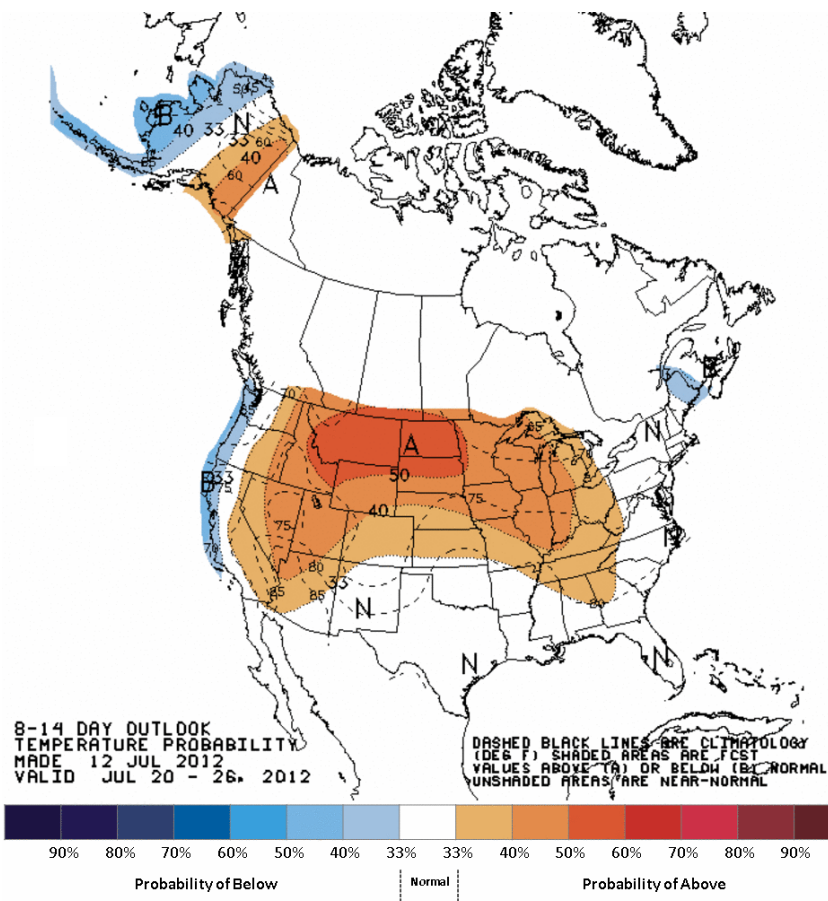
Runoff-processor date: Jul 10

RFC Volume Forecast: Jul 10

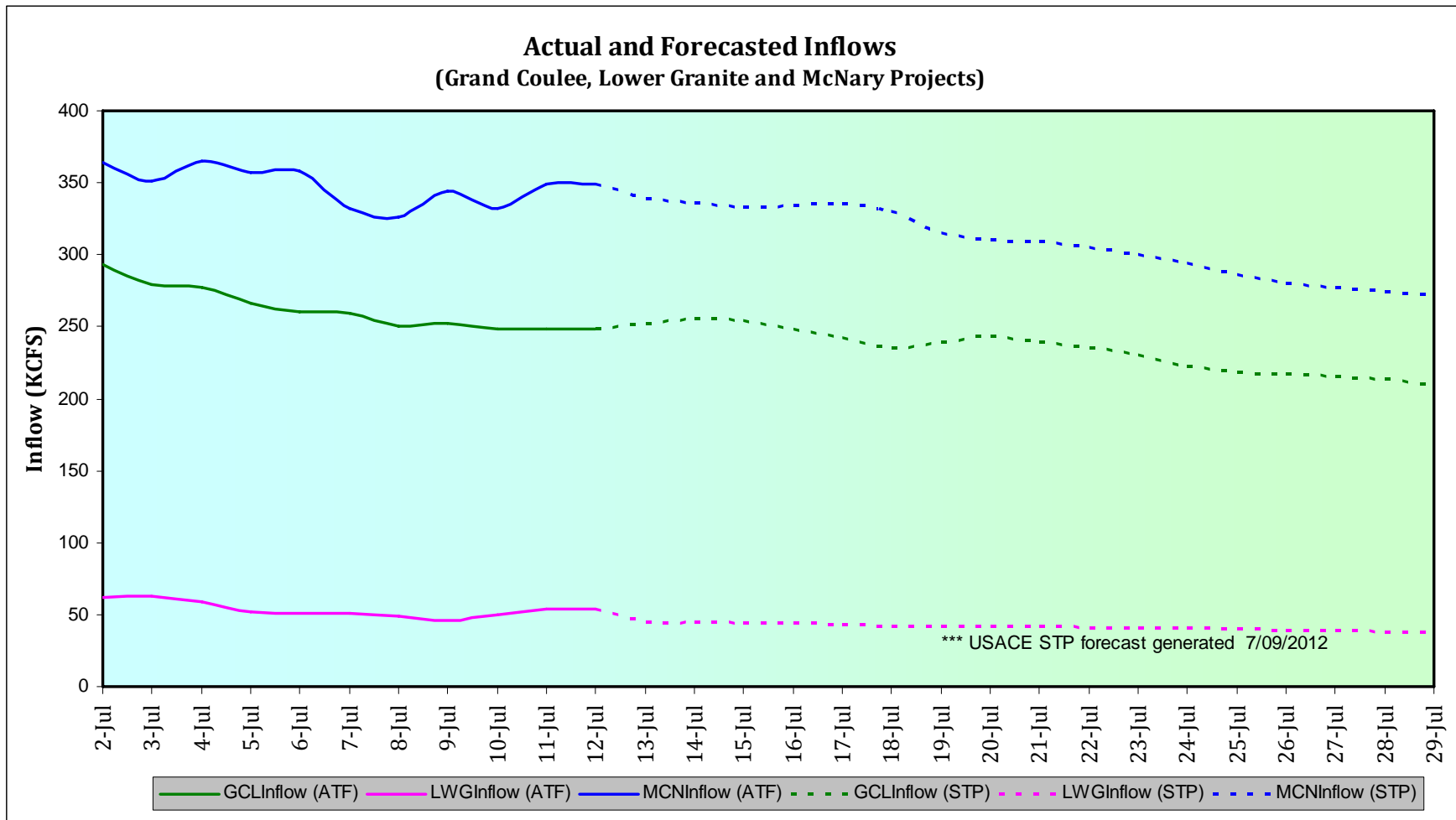
	<i>Jul 10</i> NWRFC ESP volcast	<i>Jul 10</i> Observed Since 1-Jan	Percent Remaining
January-July			
Grand Coulee	81,335	69,583	14.4%
Lower Granite	30,058	28,687	4.6%
The Dalles	129,999	115,396	11.2%

	NWRFC ESP volcast	Observed Since 1-Apr	Percent Remaining
April-August			
Grand Coulee	82,608	62,024	24.9%
Lower Granite	24,409	21,516	11.9%
The Dalles	121,839	95,932	21.3%

Weather and Streamflow

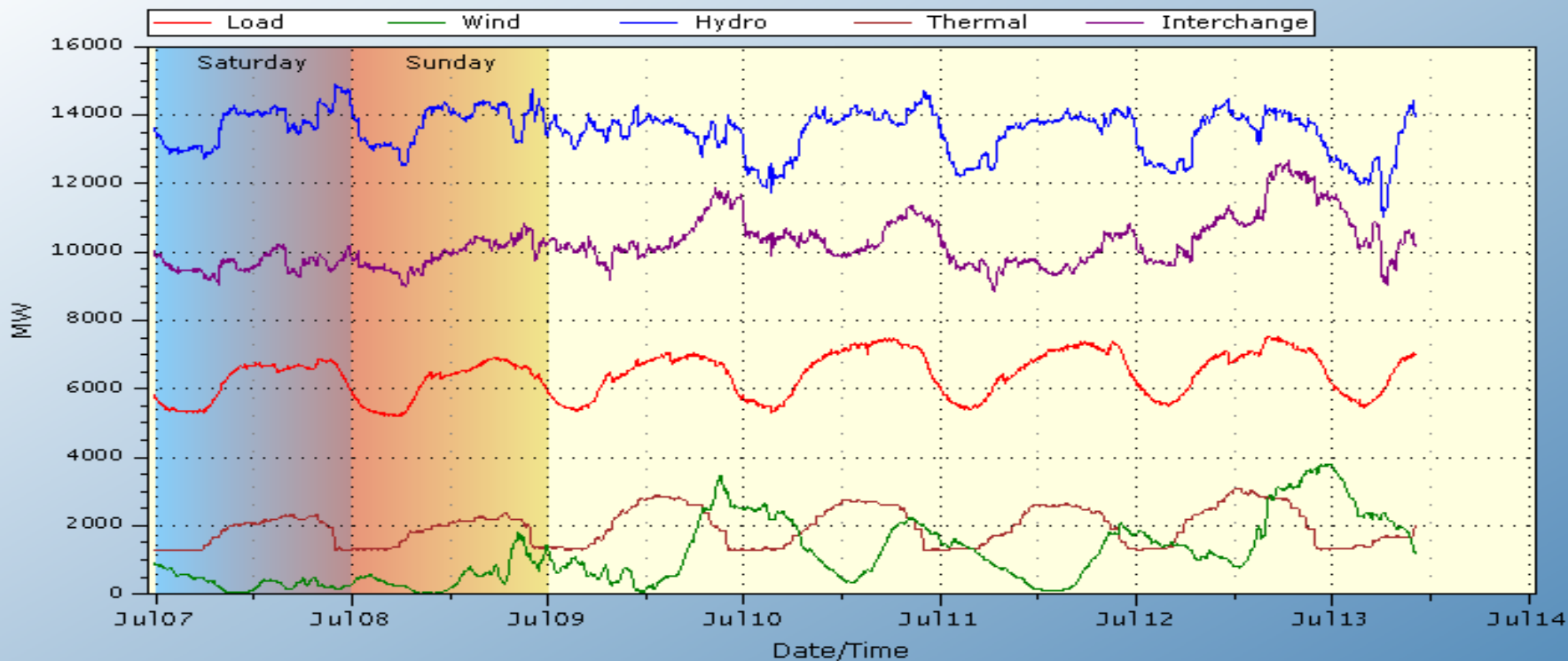


Actual and Forecasted Flows



Balancing Authority Load and Total Wind, Hydro, and Thermal Generation

BPA Balancing Authority Load & Total Wind, Hydro, Thermal Generation, and Net Interchange Last 7 days
 07Jul2012 - 14Jul2012 (last updated 13Jul2012 10:21:51)



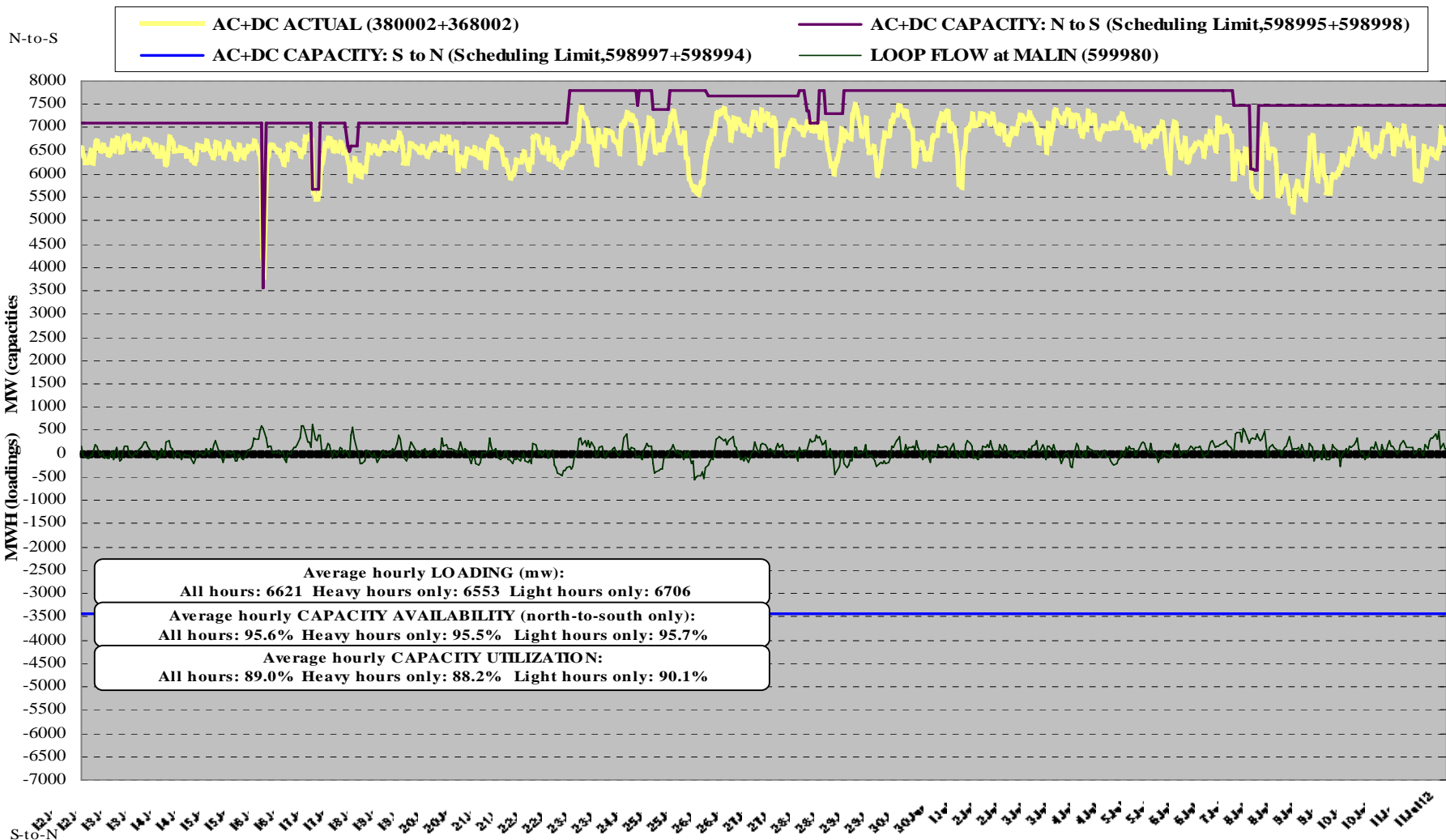
Based on 5-min readings from BPA's SCADA system for points 45583, 79687, 79682, 79685, and 45581.
 Balancing Authority Load in Red, Wind Gen. in Green, Hydro Gen. in Blue,
 Thermal Gen. in Brown, and Net Interchange in Purple.
 Click chart for installed capacity info
 BPA Technical Operations (TOT-OpInfo@bpa.gov)

Transmission Updates

- **COI N>S**
 - 4500 MW: 7/07 HE 08 to 7/22 HE 16 due to BPA Marion-Lane 1 500 kV line.
 - 4225 MW: 7/18 HE 08 to 7/18 HE 17 due to CISO Table Mountain-Cottonwood 3 230 kV line.
- **PDCI N>S**
 - 2990 MW: At rated capacity next seven days.
- **NI S>N**
 - 1950 MW: Nomogram deductions seen in preschedule forecast reduce capacity as low as ~1600 MW over various hours.

AC+DC INTERTIE AVAILABILITY & UTILIZATION: 12JUN12 - 11JUL12 (30 days)

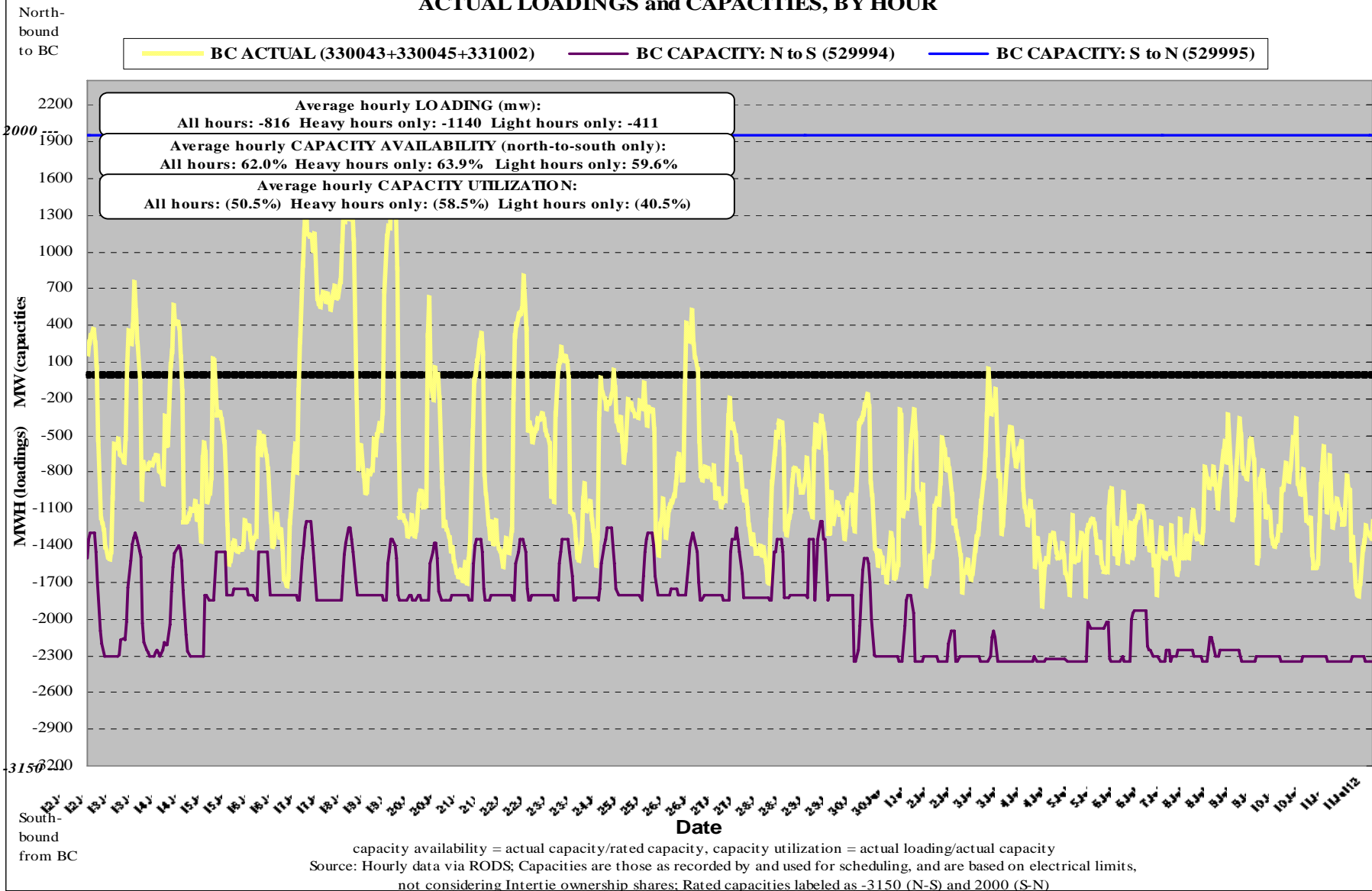
ACTUAL LOADINGS and CAPACITIES, BY HOUR



capacity availability = actual capacity/rated capacity, capacity utilization = actual loading/actual capacity
 Source: Hourly data via RODS; Capacities are those at COB or NOB and reflect total path scheduling limit

Actuals may exceed scheduling limit as long as conditions remain within North-of-John-Day vs. COI & PDCI operating nomogram limits

BC INTERTIE (WEST+EAST) AVAILABILITY & UTILIZATION: 12JUN12 - 11JUL12 (30 days)
ACTUAL LOADINGS and CAPACITIES, BY HOUR



Contact Information

- To discuss within month commercial transactions, please contact Robert Johnson at (503) 230-3183, rcjohnson@bpa.gov.
- To discuss prompt month and forward transactions, please contact Alex Spain at (503) 230-5780, ajspain@bpa.gov or Mark Miller at (503) 230-5780, memiller@bpa.gov.
- For additional information on Oversupply, please contact:
Project Manager: Nita Burbank - (503) 230-3935, nmburbank@bpa.gov
Public Engagement: Maryam Asgharian - (503) 230-4413, maasgharian@bpa.gov
- Overgeneration website:
<http://www.bpa.gov/corporate/AgencyTopics/ColumbiaRiverHighWaterMgmt/>