

System Condition Update

Spring Operations Review Forum

June 8, 2012

1:00 – 2:00 p.m.

To participate in the call please dial: **(877) 336-1839**

When prompted, enter access code: 1687421



Celebrating 75 years of
serving the Northwest

Hydro Operations Update

The Federal Columbia River Power System is being operated on a controlled refill.

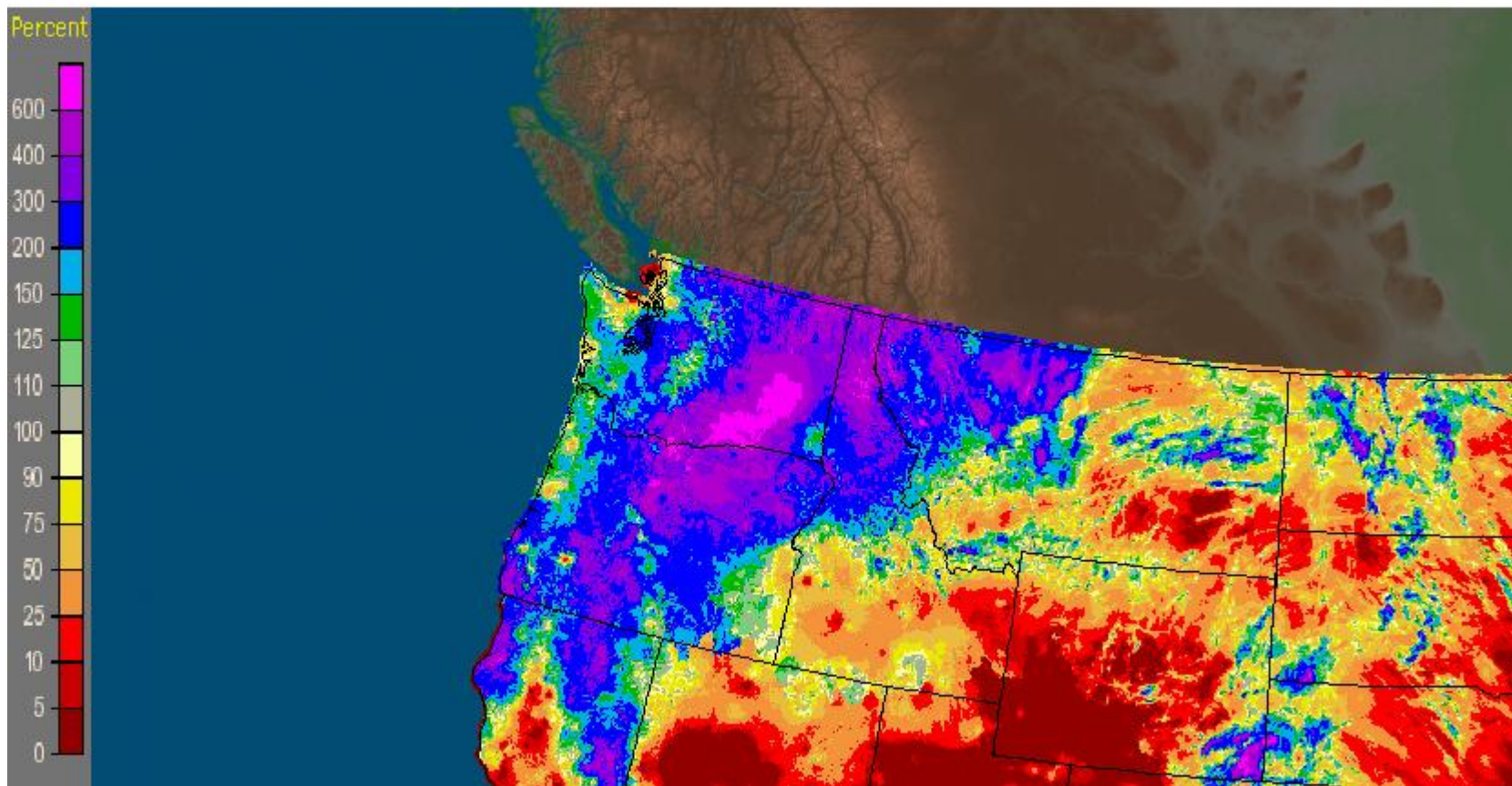
- Reservoir operations are operating to refill by late June/Early July.
 - Grand Coulee filled over 11 feet the first week of June and is currently at 1266’.
- Continue to operate the system for flood control/refill operations. Maximum discharge at The Dalles of 420 kcfs.
- The NW River Forecast Center’s June 6, January-July Water Supply Forecast at The Dalles is 121.8 million acre-feet.
 - This is an increase of over 5 Maf from last week’s update
- Oversupply Management Protocol has not been implemented this week. To date, approximately 20,600 MW-hrs of wind generation have been displaced. Please refer to the external website for further details.

Actions to manage oversupply

- Last fall/winter BPA and BC Hydro released water from non-treaty storage in Canada. The space created by the releases last fall/winter has allowed Arrow outflows to be lower than they would have been absent the Non-Treaty Storage agreement. BPA and BCH stored 140 ksf (thousands of second-foot days) under this agreement the week of May 26 – June 1 to be released in August.
- As of June 7, BPA has acquired 66,260 MWh under the Mid-Columbia Spill Exchange agreement.
- Maximizing the amount of pump load.
- Have moved non-essential generator and transmission maintenance outages out of May and June.
- Coordinated spill on Willamette projects.
- CGS has been reduced to 85% during periods when it was helpful to minimize spill. CGS is currently operating at 85%.
- Spill due to lack of demand.
- INC/DEC reserves have been reduced briefly to manage to system operational objectives this Spring

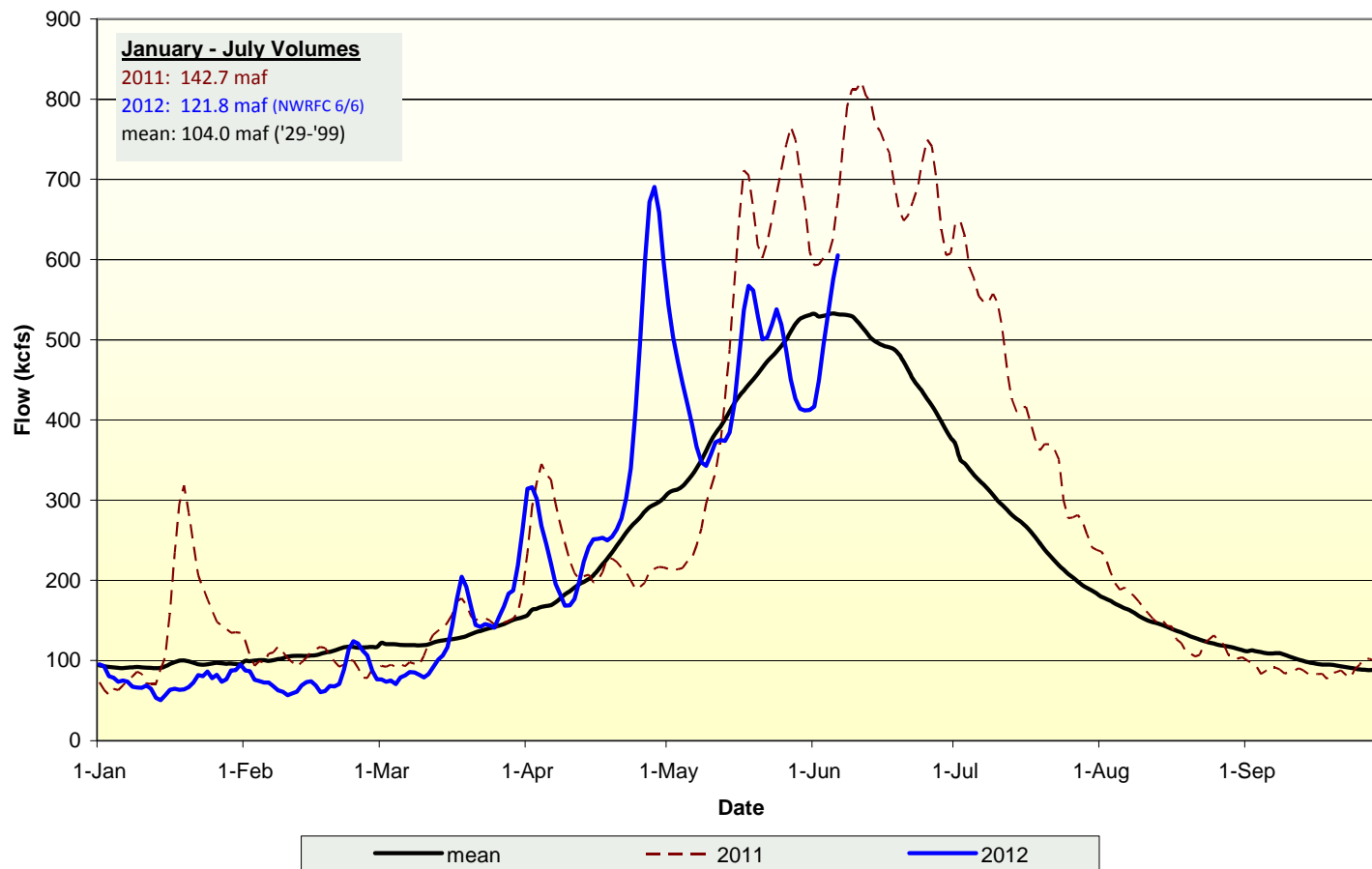
Weather and Streamflow

Northwest RFC Portland, OR: Yesterday's 7-Day Percent of Normal Precipitation
Valid at 6/7/2012 1200 UTC- Created 6/7/12 23:59 UTC



Weather and Streamflow

Natural Flows at The Dalles



Weather and Streamflow

Volume remaining at selected sites (kAF)

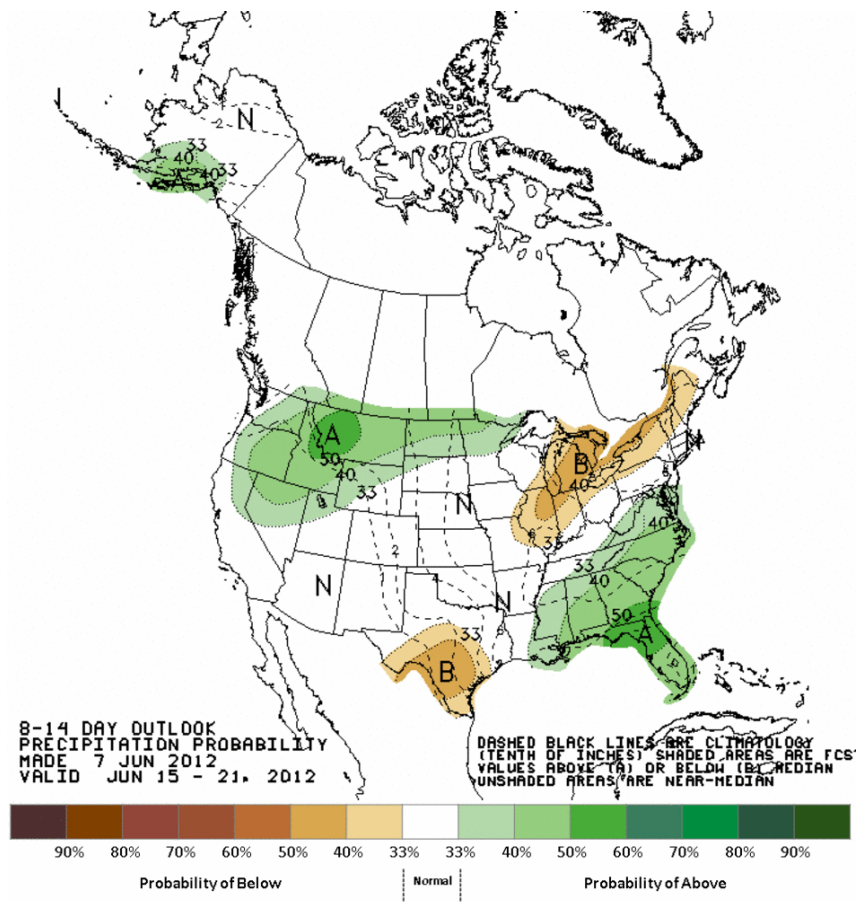
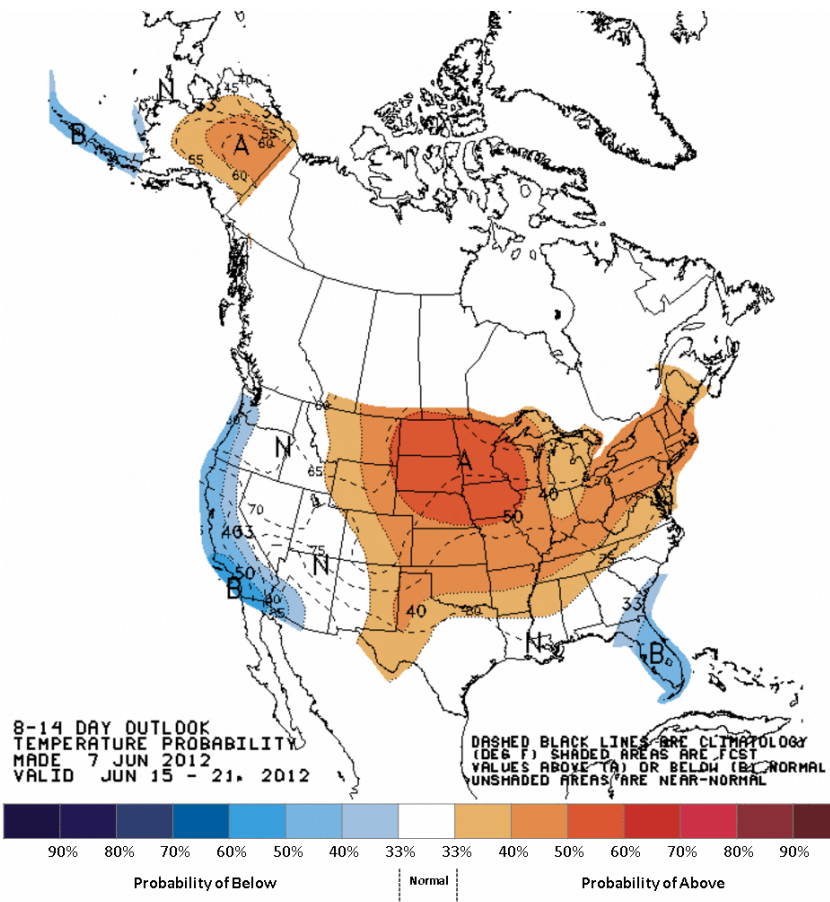
Runoff-processor date: Jun 7
 RFC Volume Forecast: Jun 6

	<i>Jun 6</i>	<i>Jun 7</i>	
	NWRFC	Observed	Percent
January-July	ESP volcast	Since 1-Jan	Remaining
Grand Coulee	75,140	39,590	44.7%
Lower Granite	29,120	23,030	19.3%
The Dalles	121,849	75,731	35.7%

	NWRFC	Observed	Percent
April-August	ESP volcast	Since 1-Apr	Remaining
Grand Coulee	76,402	32,031	56.0%
Lower Granite	23,419	15,859	30.3%
The Dalles	113,628	56,267	48.7%

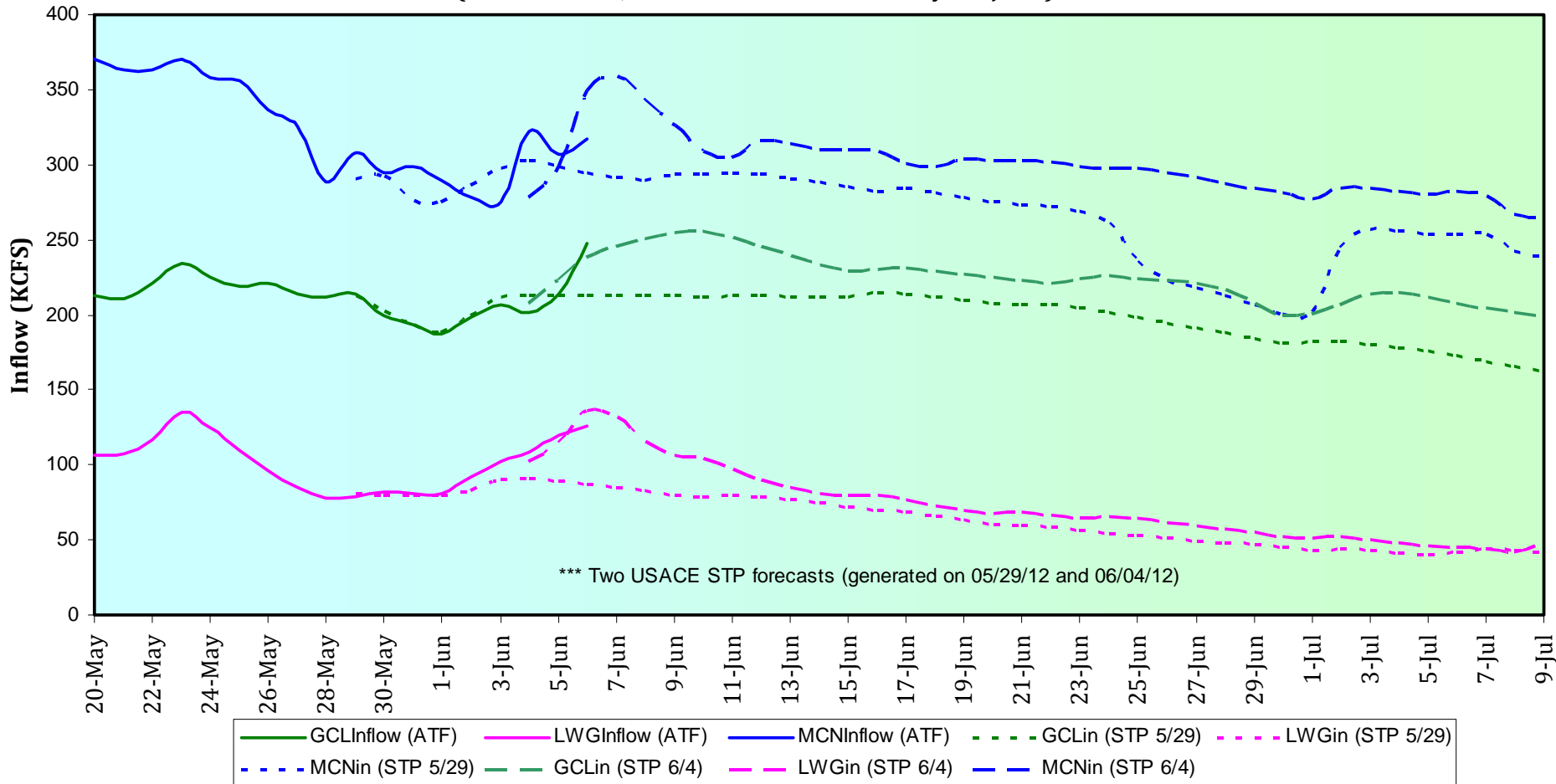
publish

Weather and Streamflow



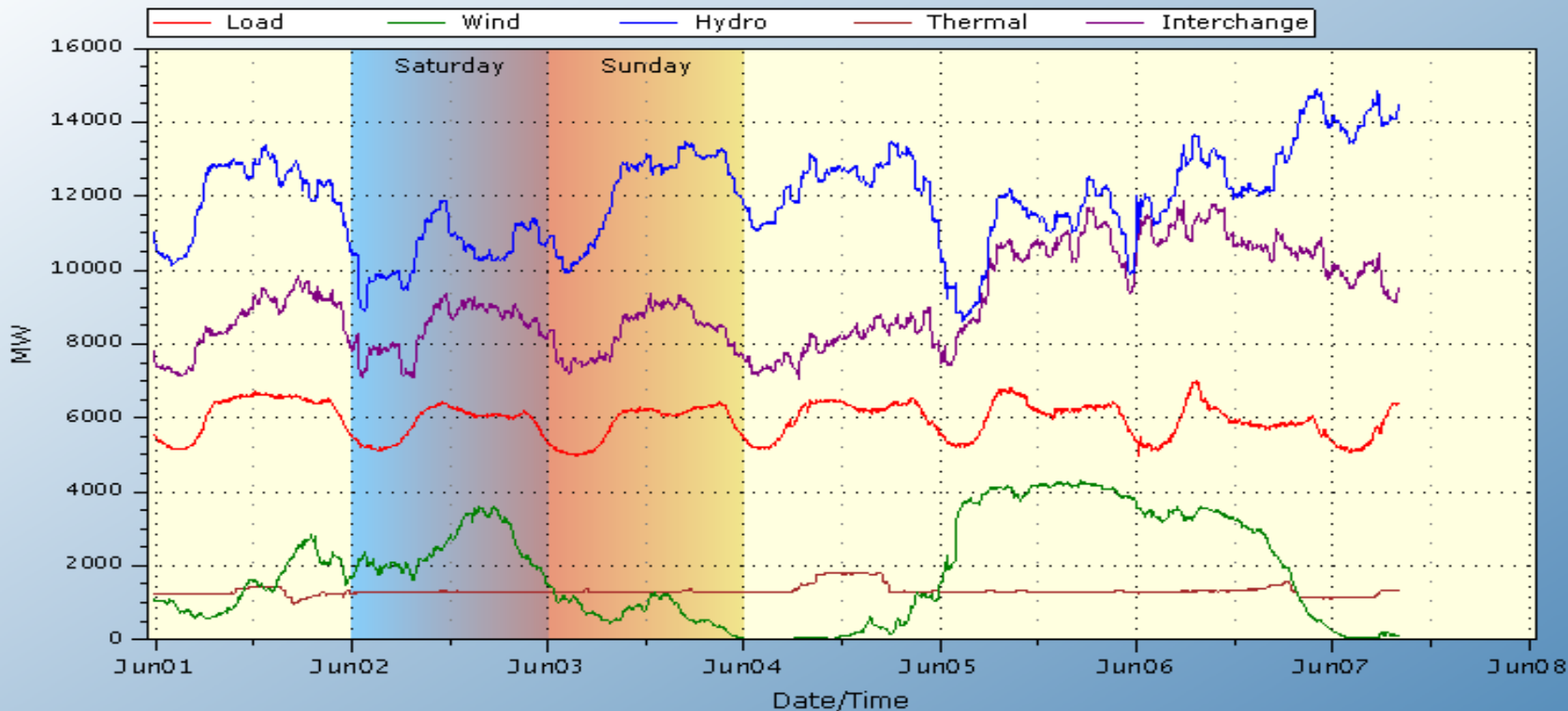
Actual and Forecasted Flows

Actual and Forecasted Inflows
(Grand Coulee, Lower Granite and McNary Projects)



Balancing Authority Load and Total Wind, Hydro, and Thermal Generation

BPA Balancing Authority Load & Total Wind, Hydro, Thermal Generation, and Net Interchange Last 7 days
 01Jun2012 - 08Jun2012 (last updated 7Jun2012 08:11:51)



Based on 5-min readings from BPA's SCADA system for points 45583, 79687, 79682, 79685, and 45581.
 Balancing Authority Load in Red, Wind Gen. in Green, Hydro Gen. in Blue,
 Thermal Gen. in Brown, and Net Interchange in Purple.
 Click chart for installed capacity info
 BPA Technical Operations (TOT-OpInfo@bpa.gov)

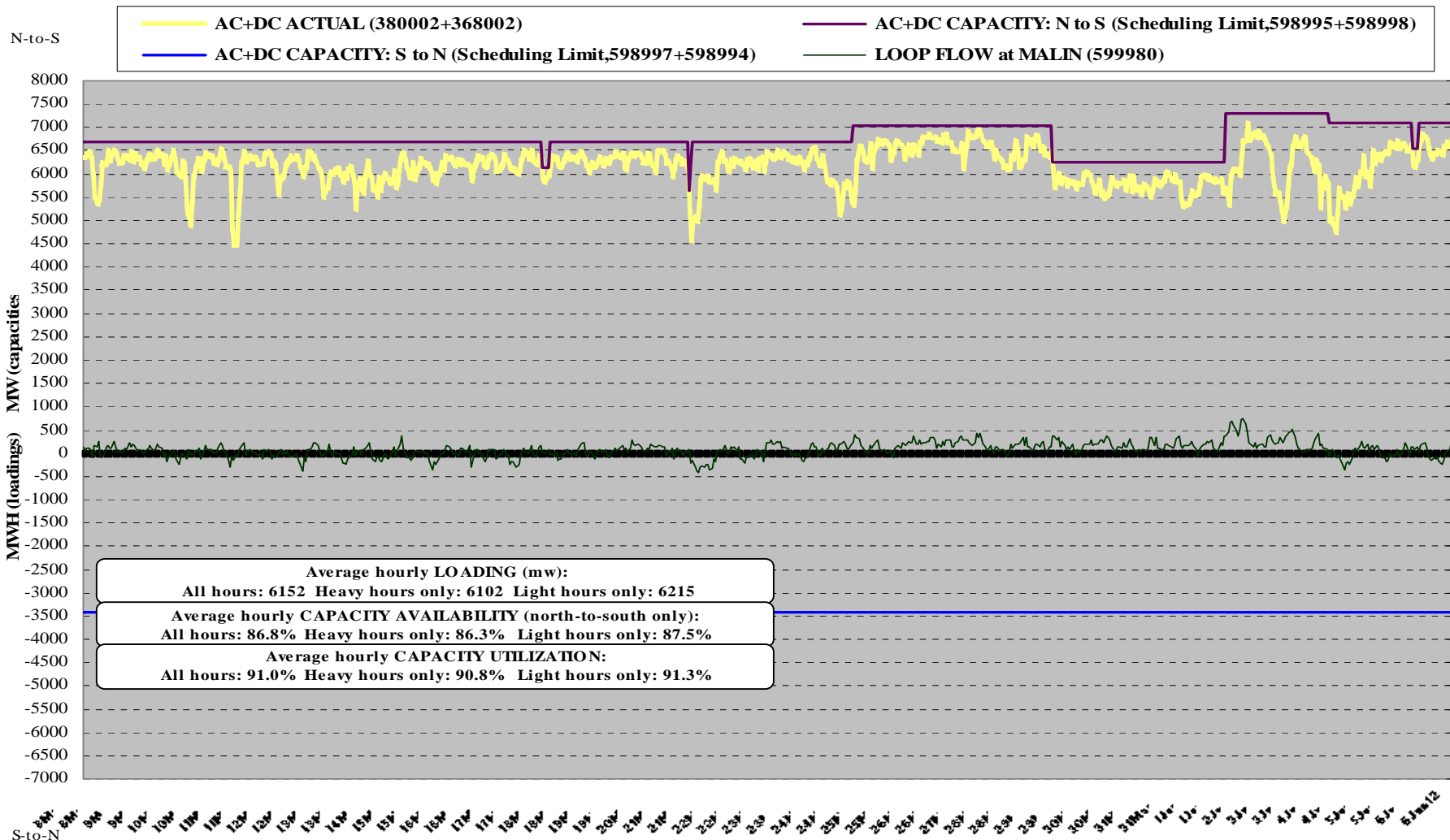
Transmission Updates

- **COI N>S**
 - 3275 MW: Through HE 19 today due to CISO-Table Mountain-Vaca 500kV Line .
 - 4100 MW: Through 6/22 due to CISO-Los Banos-Gates 500kV Line .

- **PDCI N>S**
 - 2990 MW: At rated capacity next seven days.

- **NI S>N**
 - 1950 MW: Nomogram deductions seen in preschedule forecast reduce capacity as low as ~1600 MW over various hours.

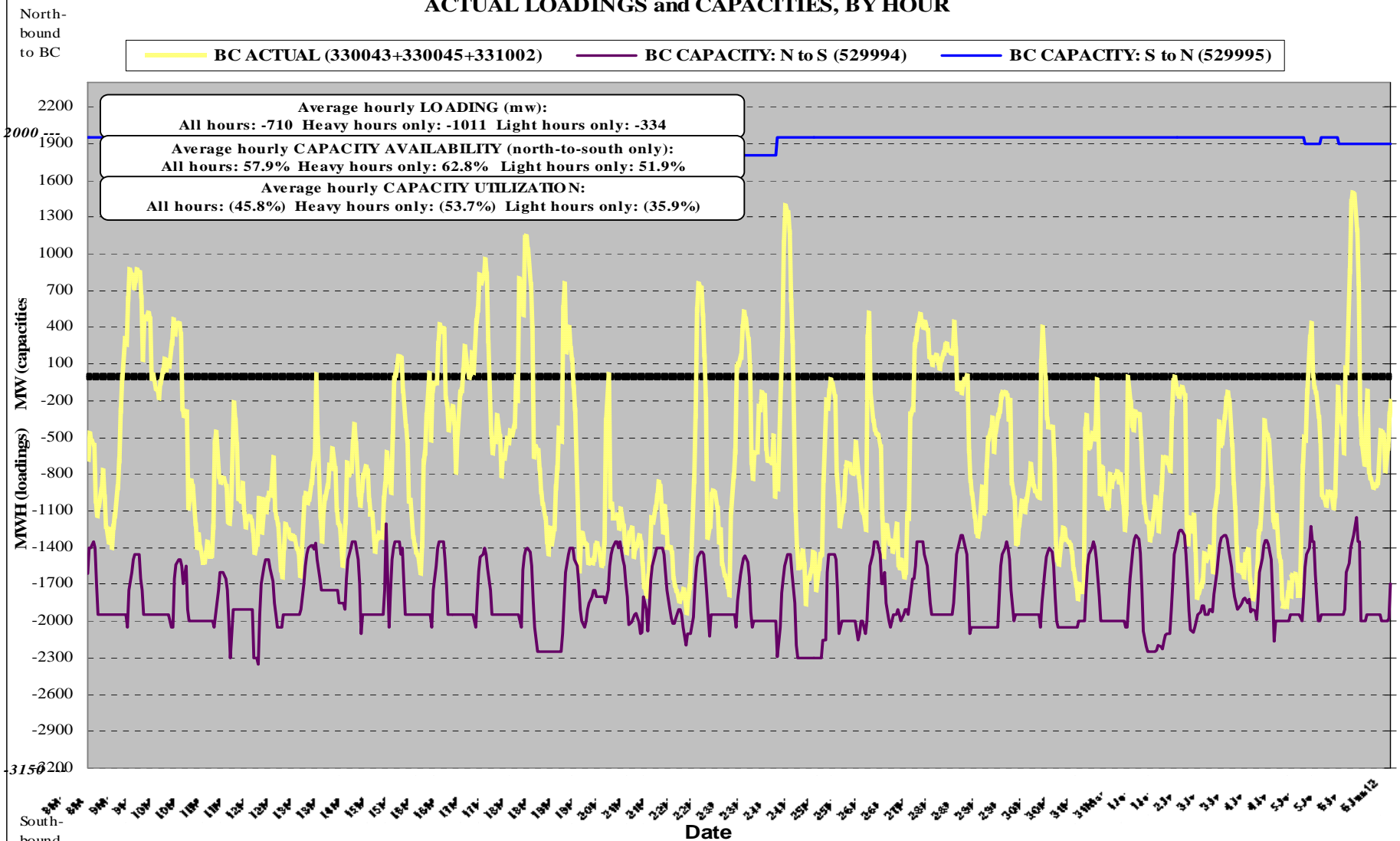
AC+DC INTERTIE AVAILABILITY & UTILIZATION: 08MAY12 - 06JUN12 (30 days) ACTUAL LOADINGS and CAPACITIES, BY HOUR



capacity availability = actual capacity/rated capacity, capacity utilization = actual loading/actual capacity
Source: Hourly data via RODS; Capacities are those at COB or NOB and reflect total path scheduling limit

Actuals may exceed scheduling limit as long as conditions remain within North-of-John-Day vs. COI & PDCI operating nomogram limits

BC INTERTIE (WEST+EAST) AVAILABILITY & UTILIZATION: 08MAY12 - 06JUN12 (30 days)
ACTUAL LOADINGS and CAPACITIES, BY HOUR



capacity availability = actual capacity/rated capacity, capacity utilization = actual loading/actual capacity
 Source: Hourly data via RODS; Capacities are those as recorded by and used for scheduling, and are based on electrical limits, not considering Intertie ownership shares; Rated capacities labeled as -3150 (N-S) and 2000 (S-N)

Contact Information

- To discuss within month commercial transactions, please contact Robert Johnson at (503) 230-3183, rcjohnson@bpa.gov.
- To discuss prompt month and forward transactions, please contact Alex Spain at (503) 230-5780, ajspain@bpa.gov or Mark Miller at (503) 230-5780, memiller@bpa.gov.
- For additional information on Oversupply, please contact:
Project Manager: Nita Burbank - (503) 230-3935, nmburbank@bpa.gov
Public Engagement: Maryam Asgharian - (503) 230-4413, maasgharian@bpa.gov
- Overgeneration website:
<http://www.bpa.gov/corporate/AgencyTopics/ColumbiaRiverHighWaterMgmt/>