

System Condition Update

Spring Operations Review Forum

July 6, 2012

1:00 – 2:00 p.m.

To participate in the call please dial: **(877) 336-1839**

When prompted, enter access code: 1687421



Celebrating 75 years of
serving the Northwest

Hydro Operations Update

The Federal Columbia River Power System is being operated for flood control.

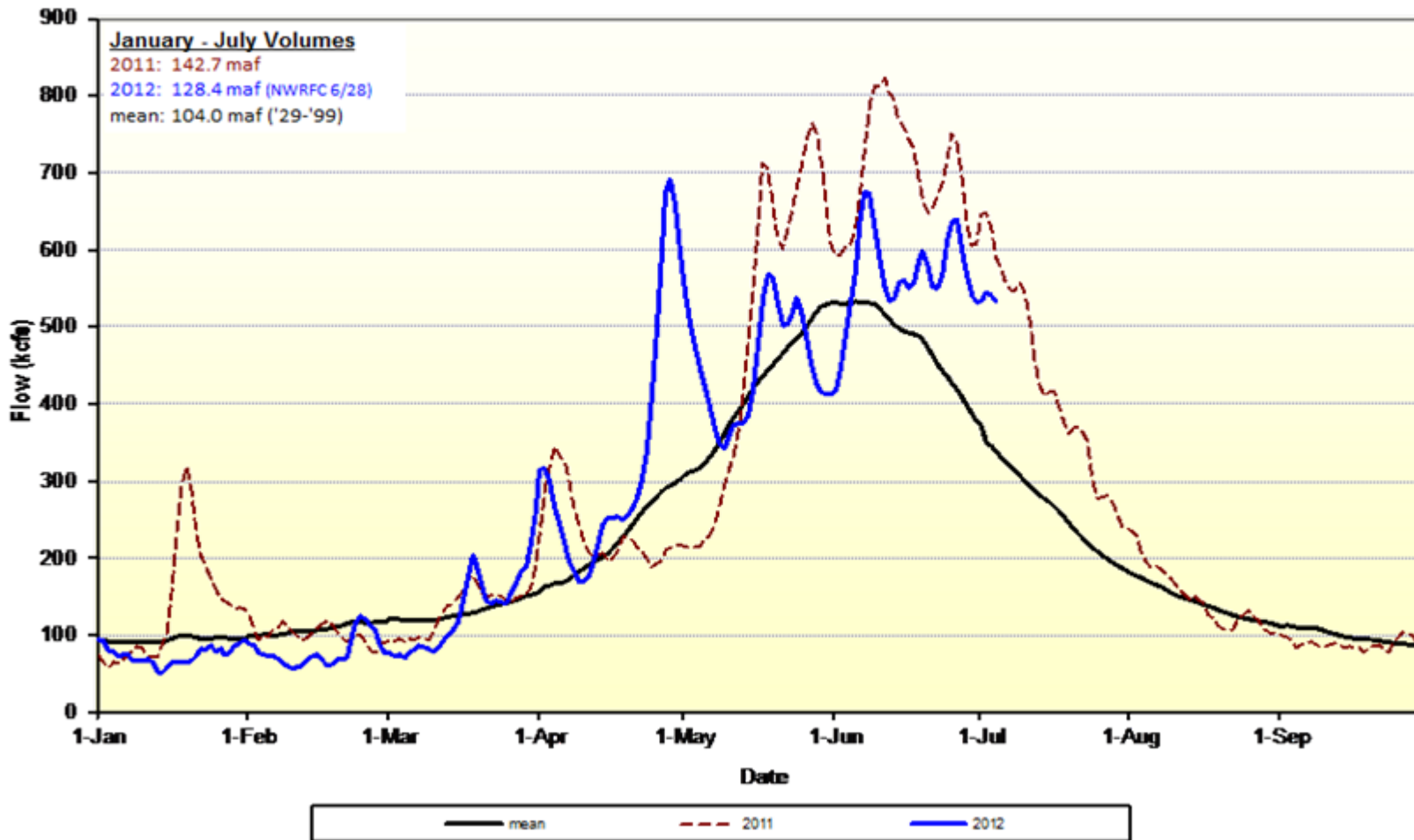
- Reservoir operations are operating to refill by late June/Early July. Transition to operating for downstream flood mitigation and, as stream flows recede, draft will begin for summer flow augmentation.
 - Grand Coulee expecting to touch full July 8.
 - All storage projects are, or are very near, full.
 - Libby, Hungry Horse, and Arrow have all been surcharged (allowed to fill higher than normal max elevation) in order to mitigate flooding downstream.
 - Sustained river flows in Canada are at or near record levels.
 - Very wet June, 300-350% of normal in some areas.
- Maximum discharge at The Dalles of 450 kcfs.
- The NW River Forecast Center's June 28, January-July Water Supply Forecast at The Dalles is 128.4 million acre-feet.
- Oversupply Management Protocol has been implemented this week. To date, approximately 37,400 MW-hrs of wind generation have been displaced. Please refer to the external website for further details.

Actions to manage oversupply

- Last fall/winter BPA and BC Hydro released water from non-treaty storage in Canada. The space created by the releases last fall/winter has allowed Arrow outflows to be lower than they would have been absent the Non-Treaty Storage agreement. BPA and BCH stored nearly 2 Maf under this agreement between May 26 – July 6 to be released in August.
- As of June 14, BPA has acquired 66,260 MWh under the Mid-Columbia Spill Exchange agreement.
- Maximizing the amount of pump load.
- Coordinated spill on Willamette projects.
- CGS has been reduced to 85% during periods when it was helpful to minimize spill. It was reduced to 85% this last weekend and through the July 4th holiday.
- Spill due to lack of demand whenever possible within water quality standards.
- INC/DEC reserves have been occasionally reduced to manage to system operational objectives this Spring.
- Recallable energy is being used to reduce the amount of over-generation spill and OMP.

Weather and Streamflow

Natural Flows at The Dalles



Weather and Streamflow

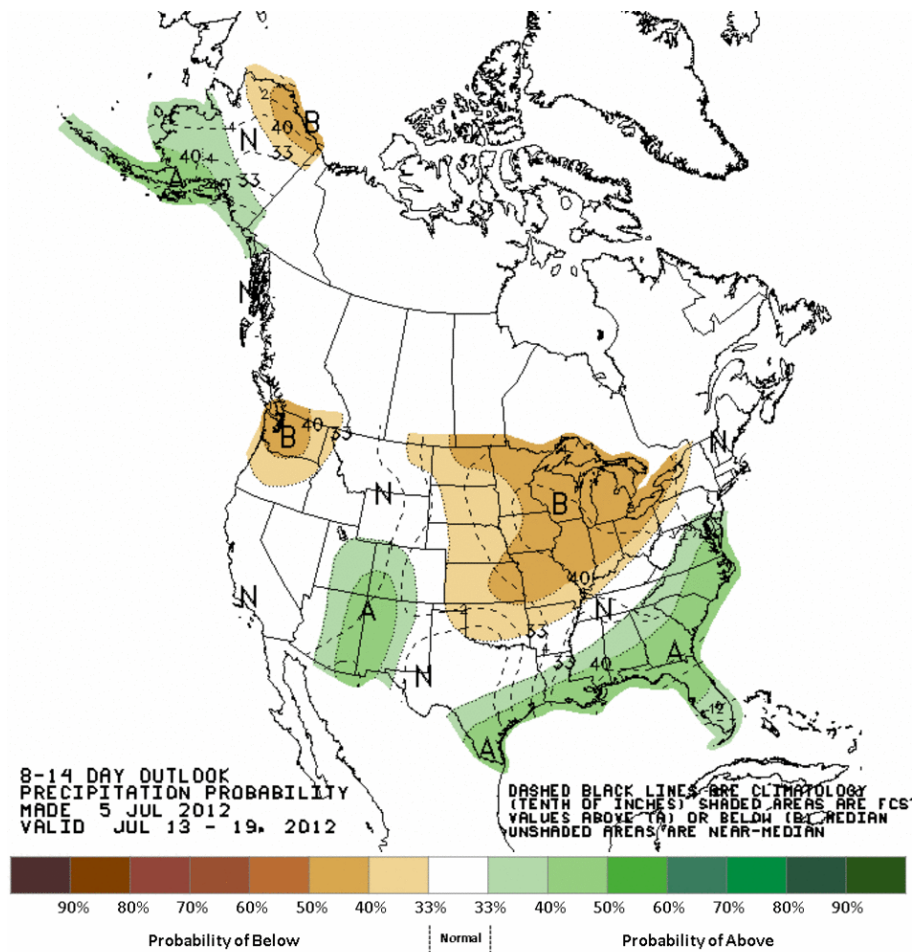
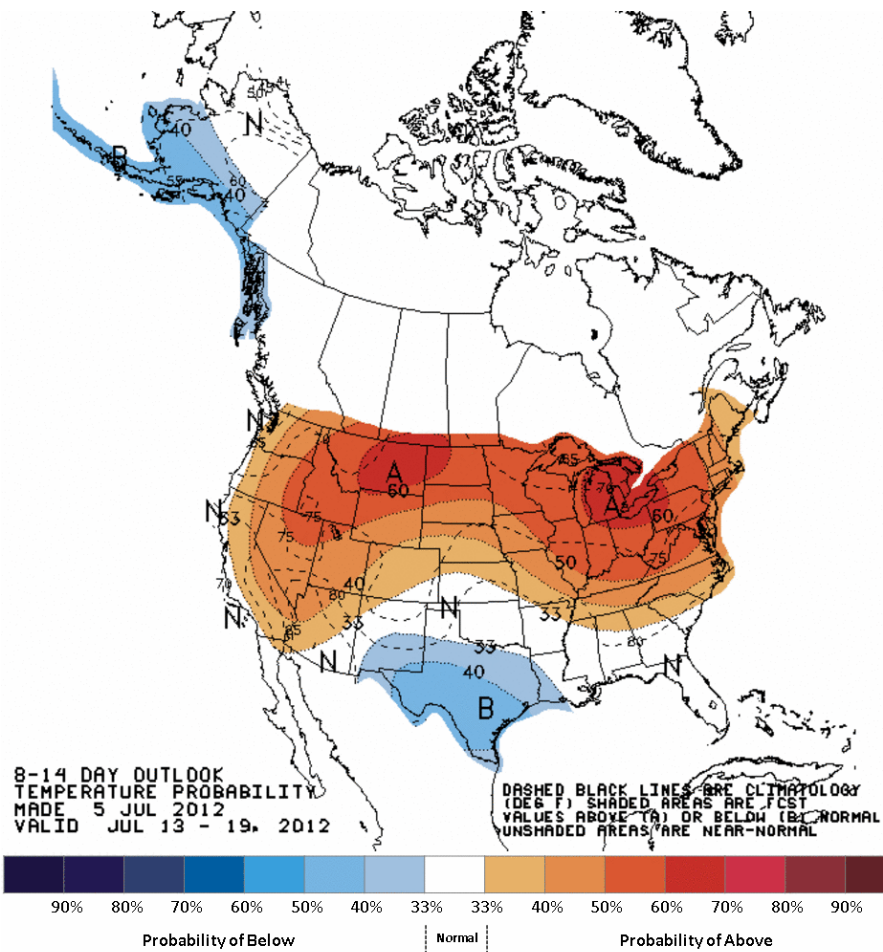
Volume remaining at selected sites (kAF)

Runoff-processor date:	Jul 3
RFC Volume Forecast:	Jun 28

	<i>Jun 28</i>	<i>Jul 3</i>	
	NWRFC	Observed	Percent
January-July	ESP volcast	Since 1-Jan	Remaining
Grand Coulee	79,904	64,582	19.2%
Lower Granite	30,083	28,033	6.8%
The Dalles	128,401	108,969	15.1%

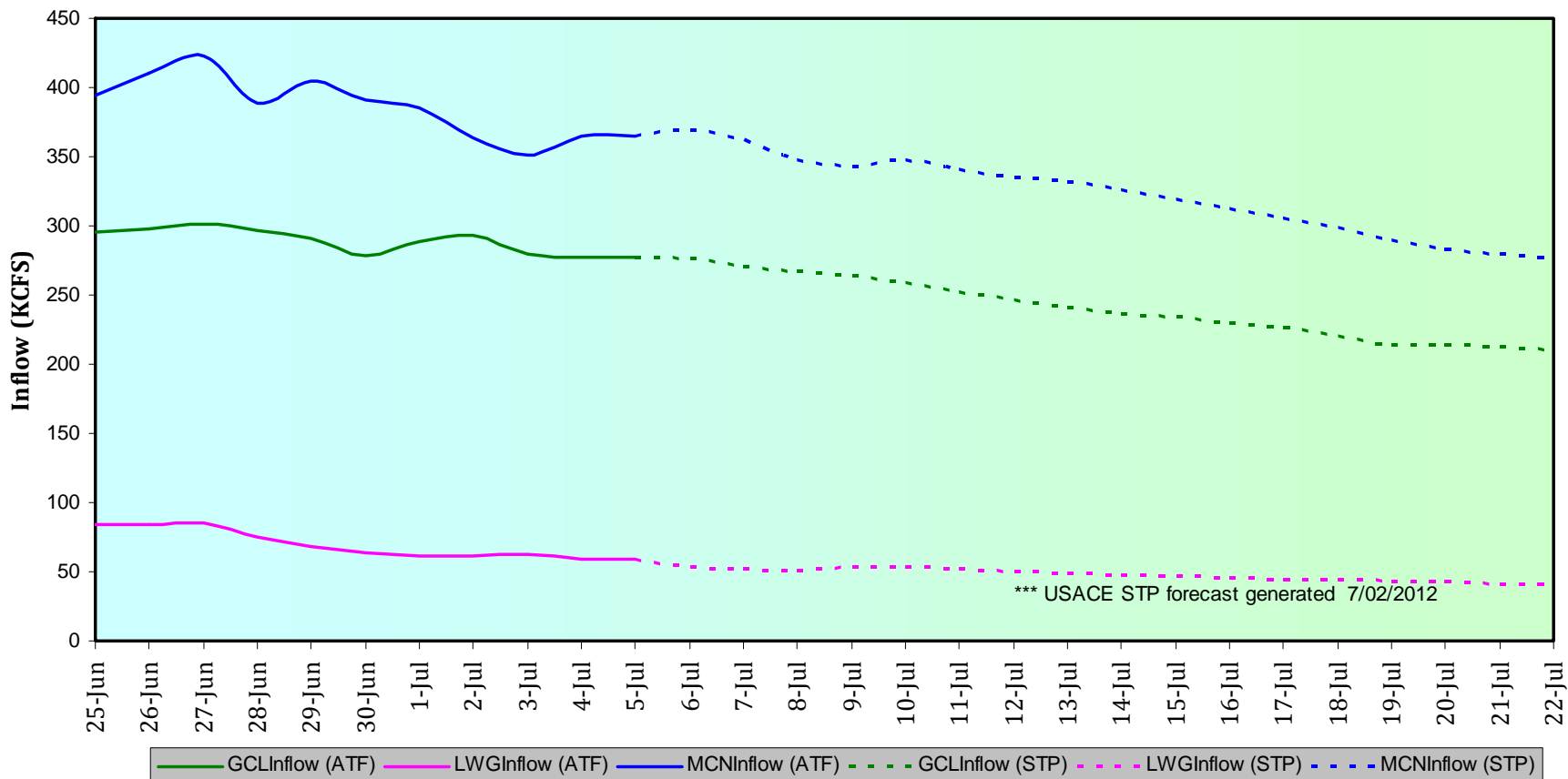
	NWRFC	Observed	Percent
April-August	ESP volcast	Since 1-Apr	Remaining
Grand Coulee	81,163	57,023	29.7%
Lower Granite	24,426	20,862	14.6%
The Dalles	120,333	89,505	25.6%

Weather and Streamflow

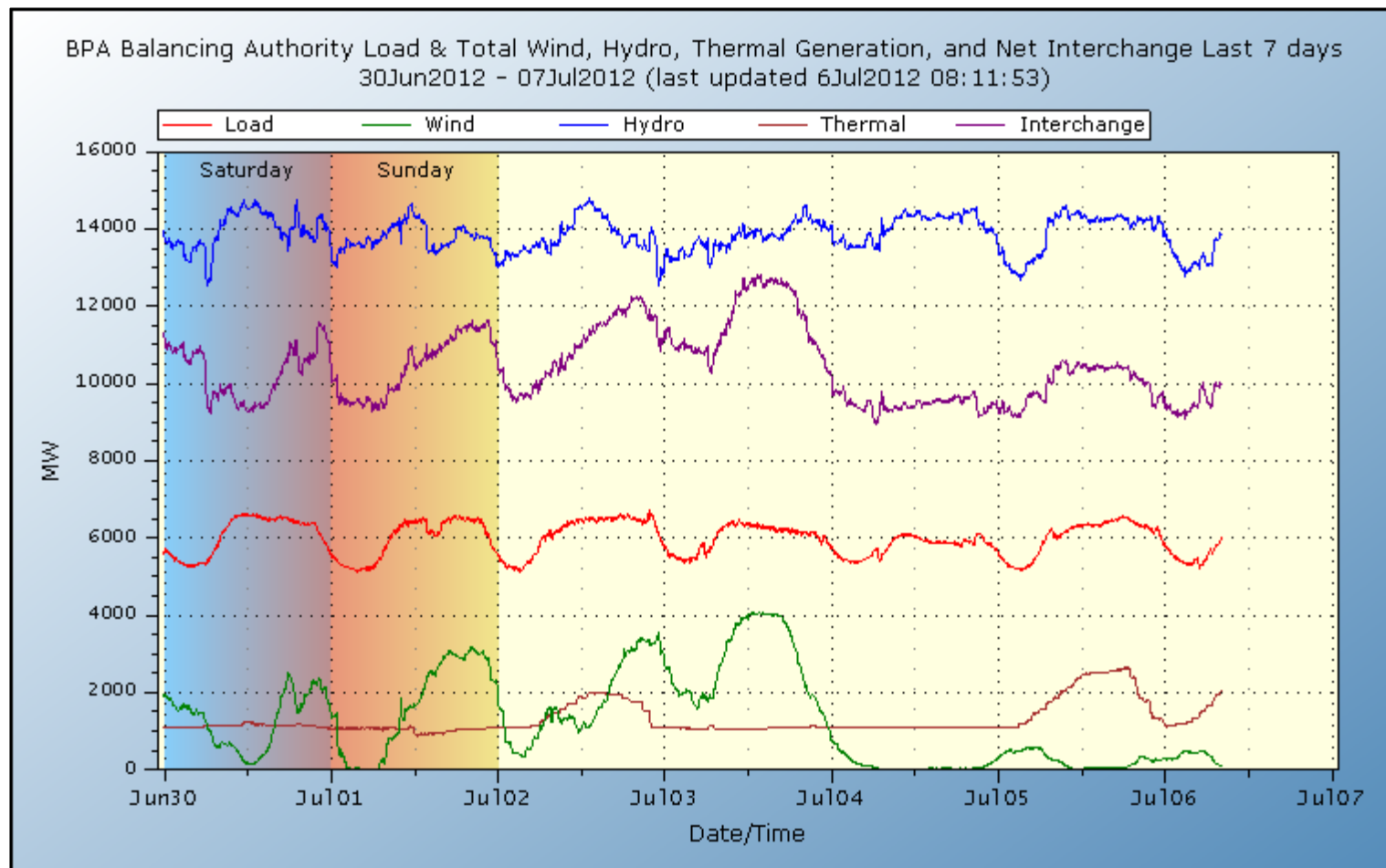


Actual and Forecasted Flows

Actual and Forecasted Inflows
(Grand Coulee, Lower Granite and McNary Projects)



Balancing Authority Load and Total Wind, Hydro, Thermal Generation, and Net Interchange

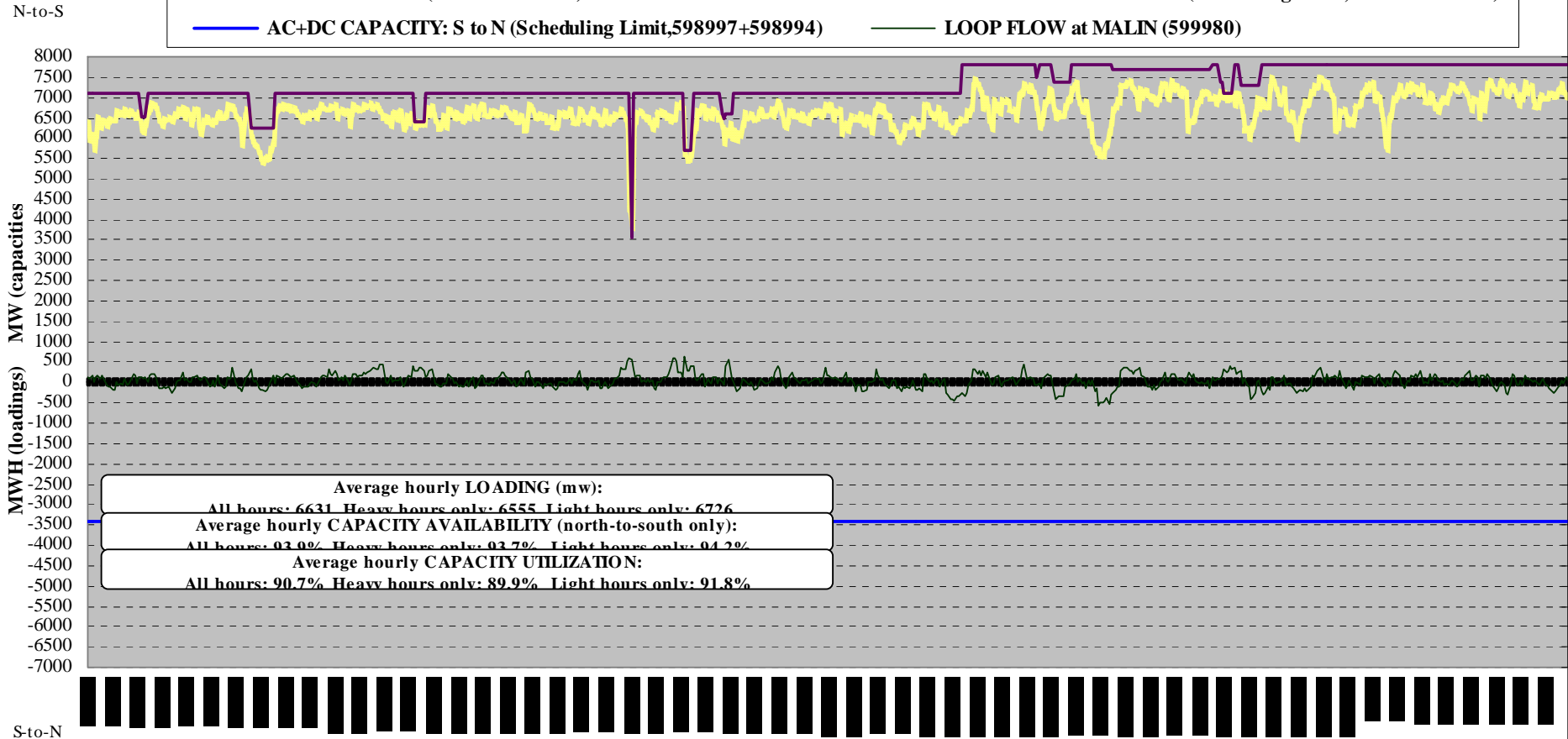


Transmission Updates

- **COI N>S**
 - 4500 MW: 7/07 HE 08 to 7/22 HE 16 due to BPA Marion-Lane 1 500 kV line.
 - 4225 MW: 7/18 HE 08 to 7/18 HE 17 due to CISO Table Mountain-Cottonwood 3 230 kV line.
- **PDCI N>S**
 - 2990 MW: At rated capacity next seven days.
- **NI S>N**
 - 1950 MW: Nomogram deductions seen in preschedule forecast reduce capacity as low as ~1900 MW over various hours.

AC+DC INTERTIE AVAILABILITY & UTILIZATION: 05JUN12 - 04JUL12 (30 days) ACTUAL LOADINGS and CAPACITIES, BY HOUR

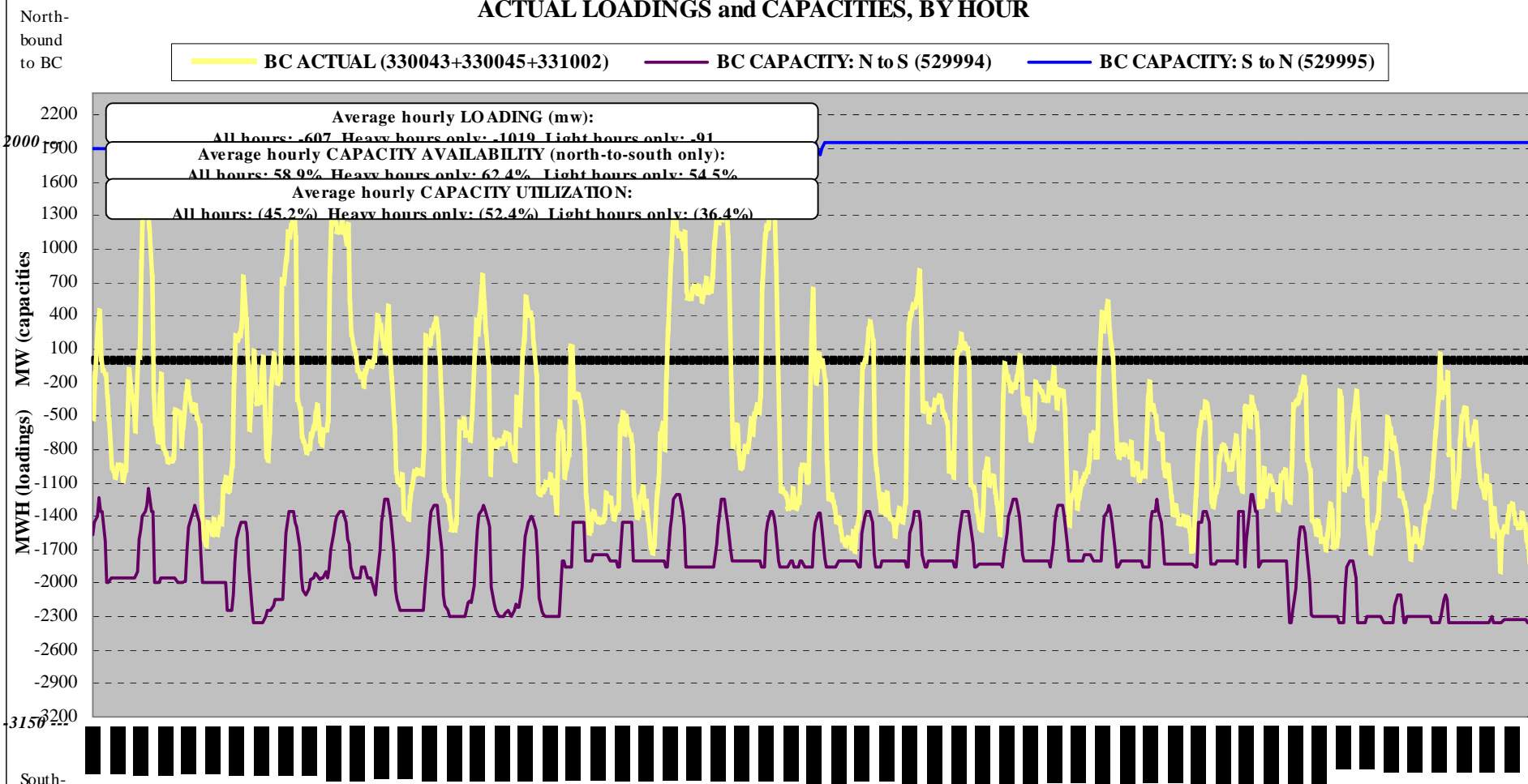
— AC+DC ACTUAL (380002+368002)
 — AC+DC CAPACITY: N to S (Scheduling Limit,598995+598998)
— AC+DC CAPACITY: S to N (Scheduling Limit,598997+598994)
 — LOOP FLOW at MALIN (599980)



capacity availability = actual capacity/rated capacity, capacity utilization = actual loading/actual capacity
 Source: Hourly data via RODS; Capacities are those at COB or NOB and reflect total path scheduling limit

Actuals may exceed scheduling limit as long as conditions remain within North-of-John-Day vs. COI & PDCI operating nomogram limits

BC INTERTIE (WEST+EAST) AVAILABILITY & UTILIZATION: 05JUN12 - 04JUL12 (30 days)
ACTUAL LOADINGS and CAPACITIES, BY HOUR



capacity availability = actual capacity/rated capacity, capacity utilization = actual loading/actual capacity
 Source: Hourly data via RODS; Capacities are those as recorded by and used for scheduling, and are based on electrical limits,
 not considering Intertie ownership shares; Rated capacities labeled as -3150 (N-S) and 2000 (S-N)

Contact Information

- To discuss within month commercial transactions, please contact Robert Johnson at (503) 230-3183, rcjohnson@bpa.gov.
- To discuss prompt month and forward transactions, please contact Alex Spain at (503) 230-5780, ajspain@bpa.gov or Mark Miller at (503) 230-5780, memiller@bpa.gov.
- For additional information on Oversupply, please contact:
Project Manager: Nita Burbank - (503) 230-3935, nmburbank@bpa.gov
Public Engagement: Maryam Asgharian - (503) 230-4413, maasgharian@bpa.gov
- Overgeneration website:
<http://www.bpa.gov/corporate/AgencyTopics/ColumbiaRiverHighWaterMgmt/>