



Bureau of Safety and Environmental Enforcement

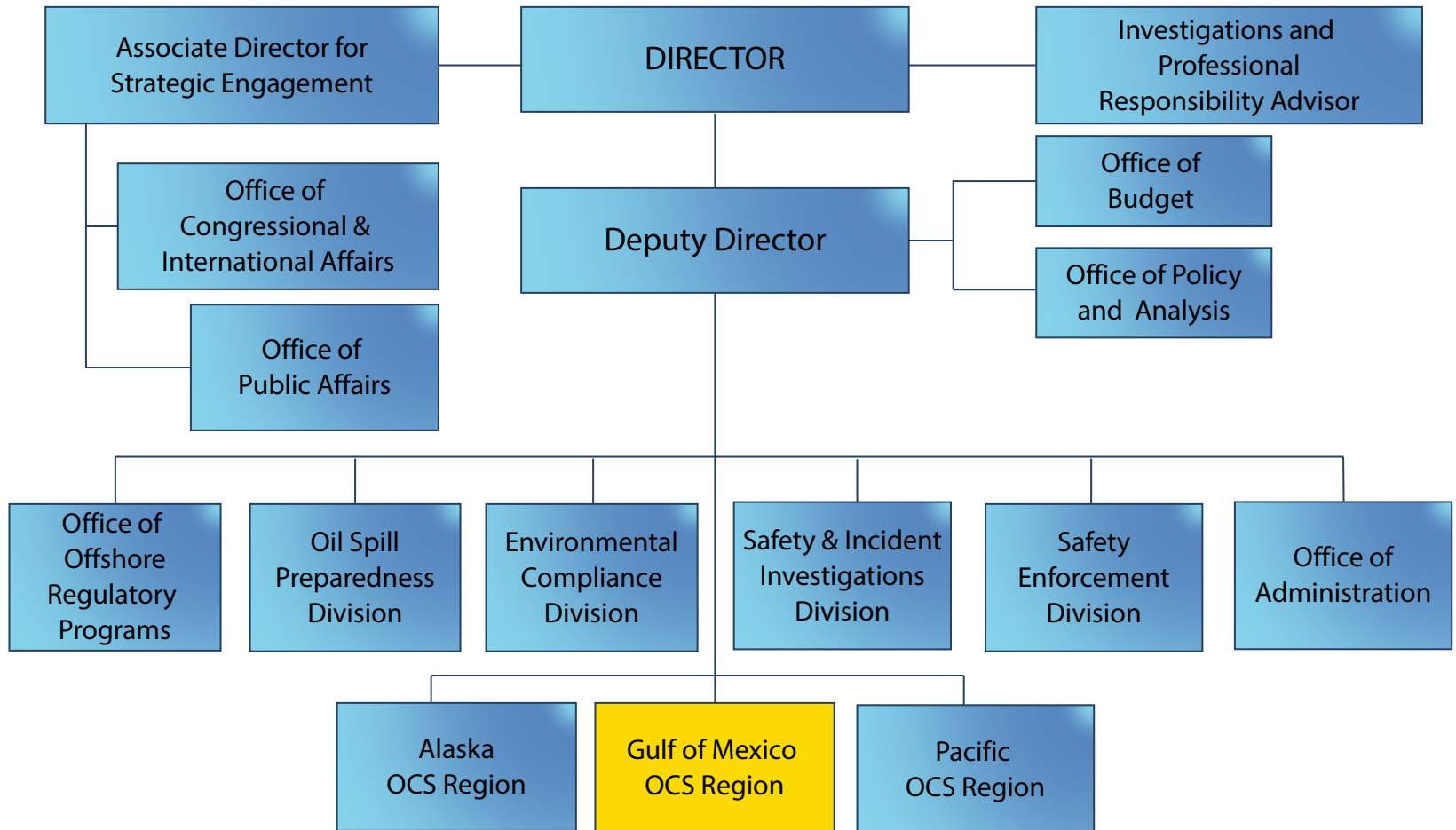
OCS Advisory Board

Kevin Karl

February 3, 2016

"To promote safety, protect the environment and conserve resources offshore through vigorous regulatory oversight and enforcement."

BSEE Mission Statement



Gulf of Mexico OCS Region Facts and Statistics

EMPLOYEES: 454 (353 currently on board)

DISCIPLINES:

Petroleum Engineers, Structural Engineers, Environmental Engineers, Geologists, Geophysicists, Physical Scientists, Biologists, Inspectors, Administrative

LOCATIONS:

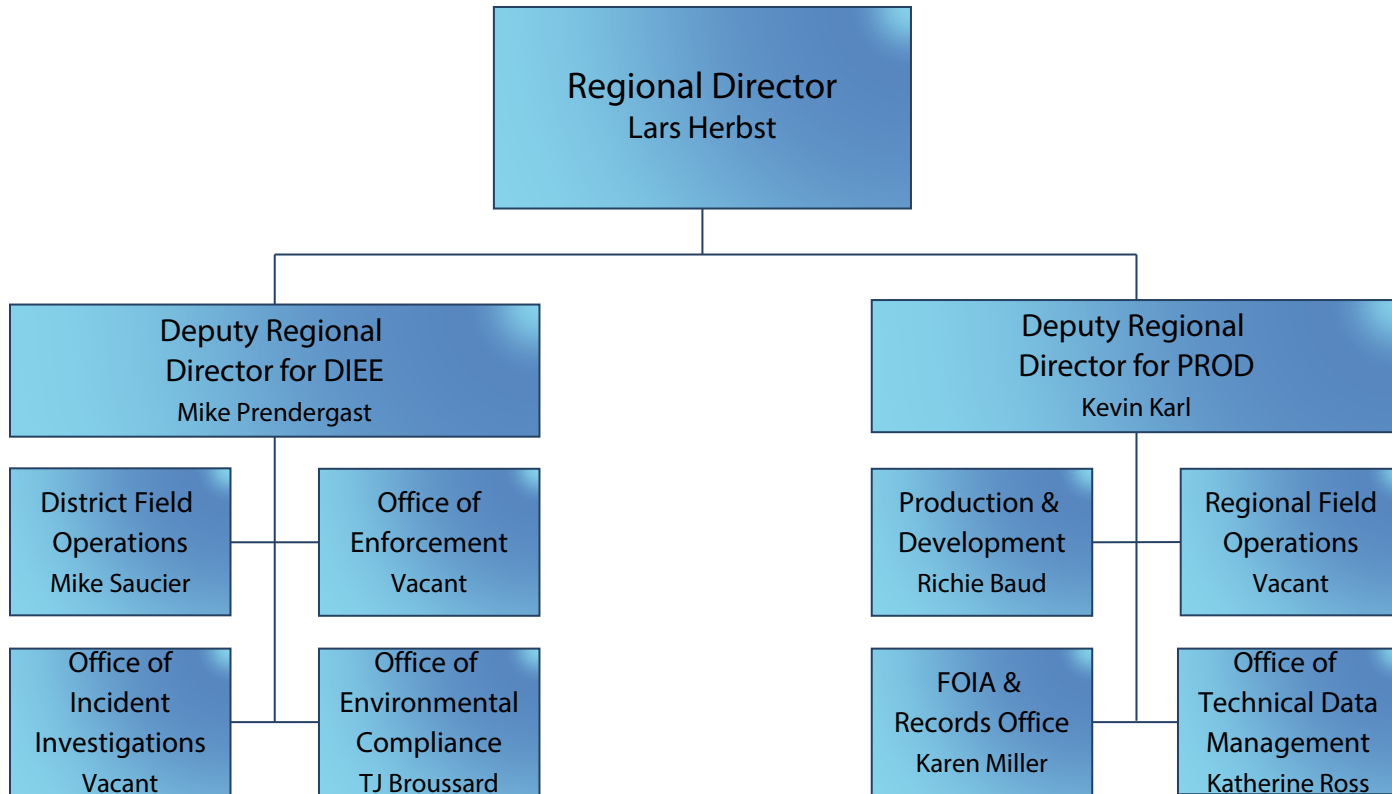
Regional Office: New Orleans

District Offices: New Orleans, Houma, Lafayette, Lake Charles, Angleton, TX

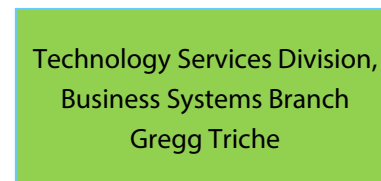
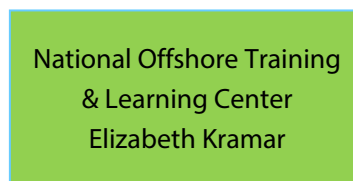
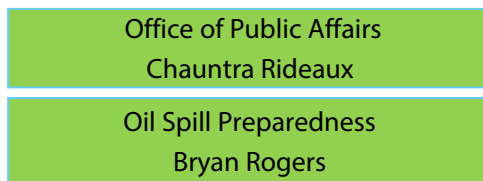
GOMR Changes

- Reorganized to better match national structure
- Added second Deputy Regional Director
- Added two new offices:
 - Office of Enforcement
 - Office of Incident Investigations
- Office of Environmental Compliance now a direct report to the GOMR

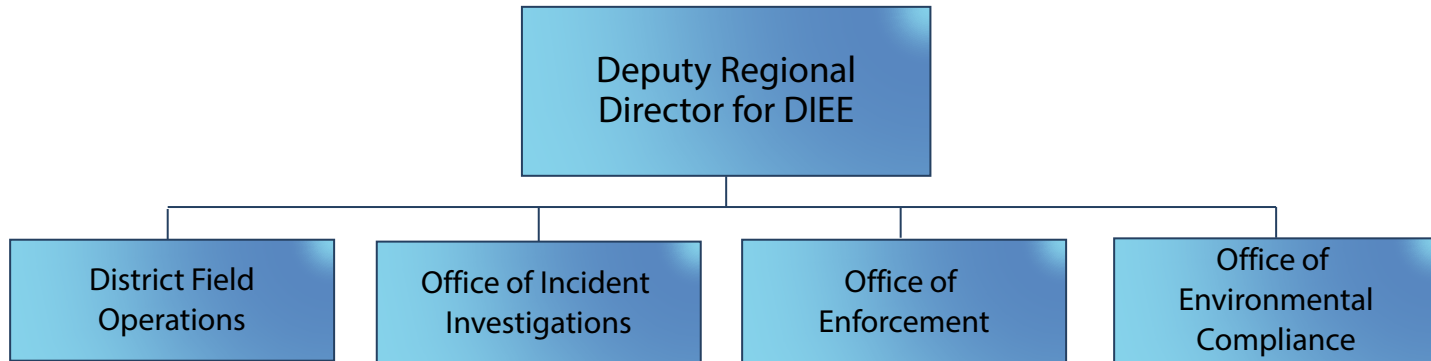
Gulf of Mexico OCS Region



Headquarters-based

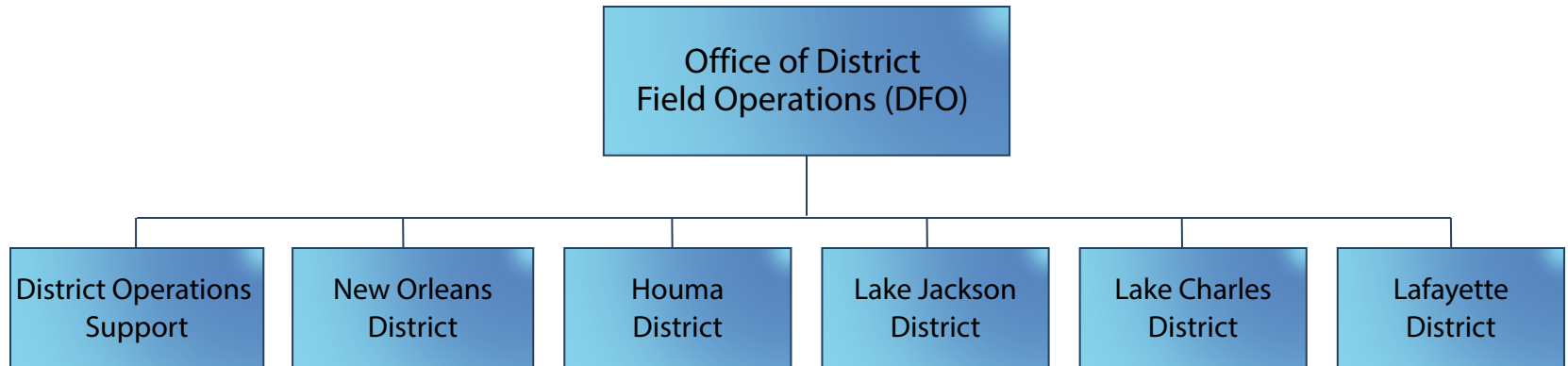


Deputy Regional Director for DIEE



- Participates in the management of:
 - Regulation of exploration, development, and production operations on the OCS
 - Inspections and environmental compliance
 - Enforcement and investigation
 - Civil penalties
 - Monitoring and directing district operations

District Field Operations



- Through the District Offices, conducts both well operations and production inspections on offshore rigs and facilities.
- Reviews and approves drilling, production safety system and decommissioning permits.
- Receives incident reports from operators and investigates for completion of District Investigations.

Office of Enforcement



Office of
Enforcement (ENF)

- Reviews Incidents of Non-Compliance (INCs) submitted for Civil Penalty Review.
- Advise and support the National Civil Penalty Coordinator.
- Issues Performance Improvement Plan orders and assists the Office of Safety Management with monitoring improvement.
- Prepares recommendations for operator disqualifications.

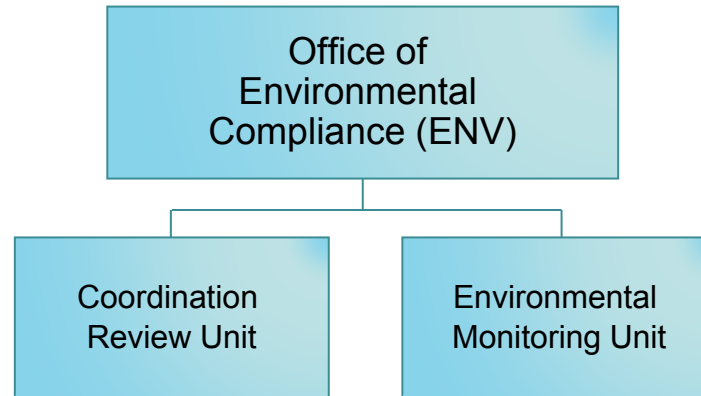
Office of Incident Investigations



Office of Incident
Investigations (INV)

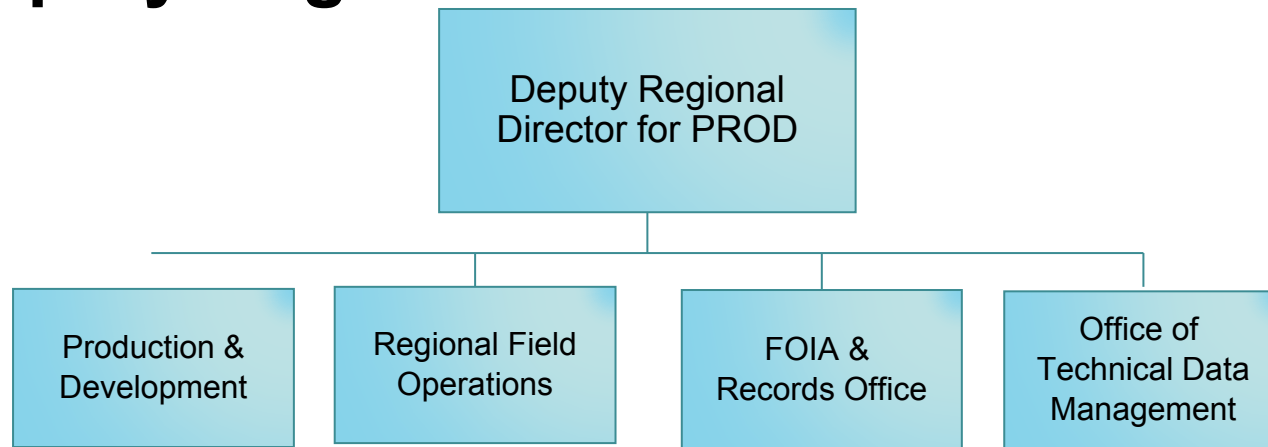
- Investigates major GOMR incidents to determine cause and to recommend actions to prevent recurrence.
- Conducts major incident investigation panel hearings.
- Works with the Office of Safety Management to prepare all Safety Alerts associated with incident investigations.

Office of Environmental Compliance



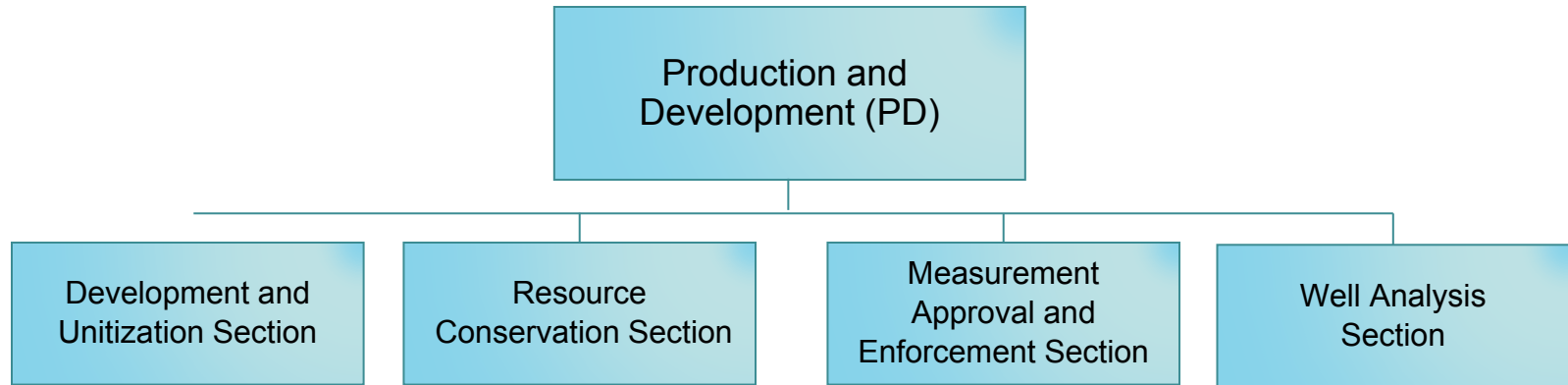
- Oversees the necessary level of environmental compliance verification for activities conducted on the Federal OCS under BSEE/BOEM authorization.
- Manages the Seafloor Compliance, Assessment, and Monitoring Program (SCAMP) and its scientific diving and remote-sensing survey efforts.
- Manages compliance with the National Environmental Policy Act (NEPA) regarding GOMR permitting.
- Monitors field compliance monitoring and verification of environmental standards.

Deputy Regional Director for PROD



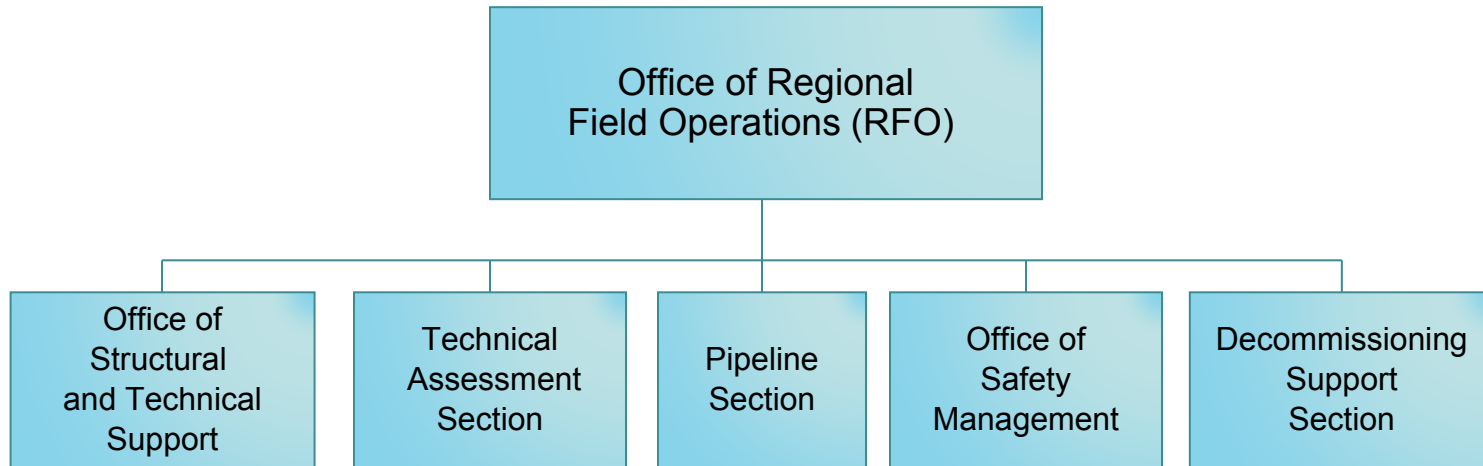
- Participates in the management of:
 - Regulation of exploration, development, and production activities on the OCS.
 - “Conservation” and meter/measurement.
 - Structure and pipeline approvals.
 - New and unique technology reviews.
 - Safety and Environmental Management Systems (SEMS).
 - Decommissioning cost estimation and Idle iron
 - Data quality assurance
 - FOIA

Production and Development



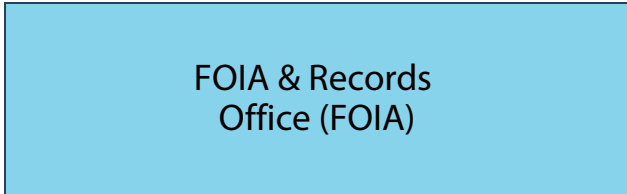
- Approves meter/measurement systems
- Verifies production volumes
- Approves exploratory and reservoir units
- Approves lease extensions (i.e., SOP, SOO, >180 days between ops)
- Approves flaring and venting of gas
- Approves downhole commingling
- Gas cap production approvals
- Premature Zone Abandonment

Regional Field Operations



- Structure approval and facility decommissioning, removal, and site clearance.
- Pipeline approval and decommissioning
- DWOPs (new and unique technology).
- SEMS
- Conducts decommissioning cost assessments for all OCS wells, facilities, and pipelines.
- Monitors operator decommissioning operations associated with Idle Iron and terminated leases.
- Monitors and analyzes operator safety performance.

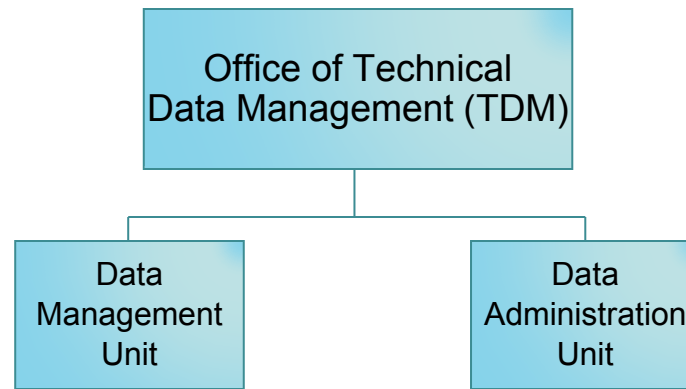
FOIA & Records Office



FOIA & Records
Office (FOIA)

- Manages the protection and release of information specifically regulated by the FOIA Act.
- Provides products, services, and assistance to the general public for access to nonproprietary records.

Office of Technical Data Management



- Directs the Technical Data Management Program in support of BSEE and BOEM.
- Functions as the “front door” for data submitted – directional surveys, velocity surveys, well logs, paleo data, core analysis, etc. – enforcing compliance, preliminary quality check, loading corporate database, etc.
- Manages the release of well data through the BSEE GOMR/BOEM GOMR Data Center.
- Manages data now for all three BSEE Regional offices (GOMR, Pacific, Alaska)

Thank You

BSEE Website: www.bsee.gov



@BSEEGov



BSEEGov



Bureau of Safety and
Environmental Enforcement

“To promote safety, protect the environment and conserve resources offshore through vigorous regulatory oversight and enforcement.”