

# factsheet

June 2009

## Kootenai River Valley conservation easement protects habitat

The Bonneville Power Administration is proposing to fund the acquisition of a parcel of land in the Kootenai River Valley for wildlife habitat mitigation. The parcel totals 693 acres and is located in Boundary County, Idaho.

The acquisition parcel and associated conservation easement were selected for protection in part due to the potential to restore altered riparian habitats for wildlife, resident fish species (i.e., rainbow trout, bull trout, westslope cutthroat trout, kokanee) and the Kootenai white sturgeon listed as threatened under the Endangered Species Act. The Kootenai River valley also provides early spring range for grizzlies, local populations of migratory waterfowl, neotropical birds, raptors and elk, deer and moose.

Over the years, various land-use disturbances have altered the Kootenai River Valley native environment. These include loss of cottonwoods and increased erosion along the river, both of which contribute to the decline of fish and wildlife populations in the area. Additionally, as the rate of development moves north into Boundary County, this area could retain the potential for effective restoration without affecting prime agricultural lands.

Additionally, this land is significant to the Kootenai Tribe of Idaho, with evidence of traditional use going back thousands of years.

Acquiring these properties would provide BPA with credits for partial mitigation of wildlife habitat losses due to the construction and inundation of Albeni Falls Dam, a federal dam regulating water levels in Lake Pend Oreille.

### Long-term stewardship

Once these parcels have been acquired, which is expected in summer 2009, a conservation easement would be placed on the property to ensure that the habitat is protected. The Kootenai Tribe of Idaho would provide long-term stewardship for the land and develop a management plan to guide the protection and enhancement of habitat resources on the property.

Pending BPA's approval of the management plan, any activities that could impair or damage fish and wildlife habitats (such as construction of buildings, etc.) would be prohibited on this land.

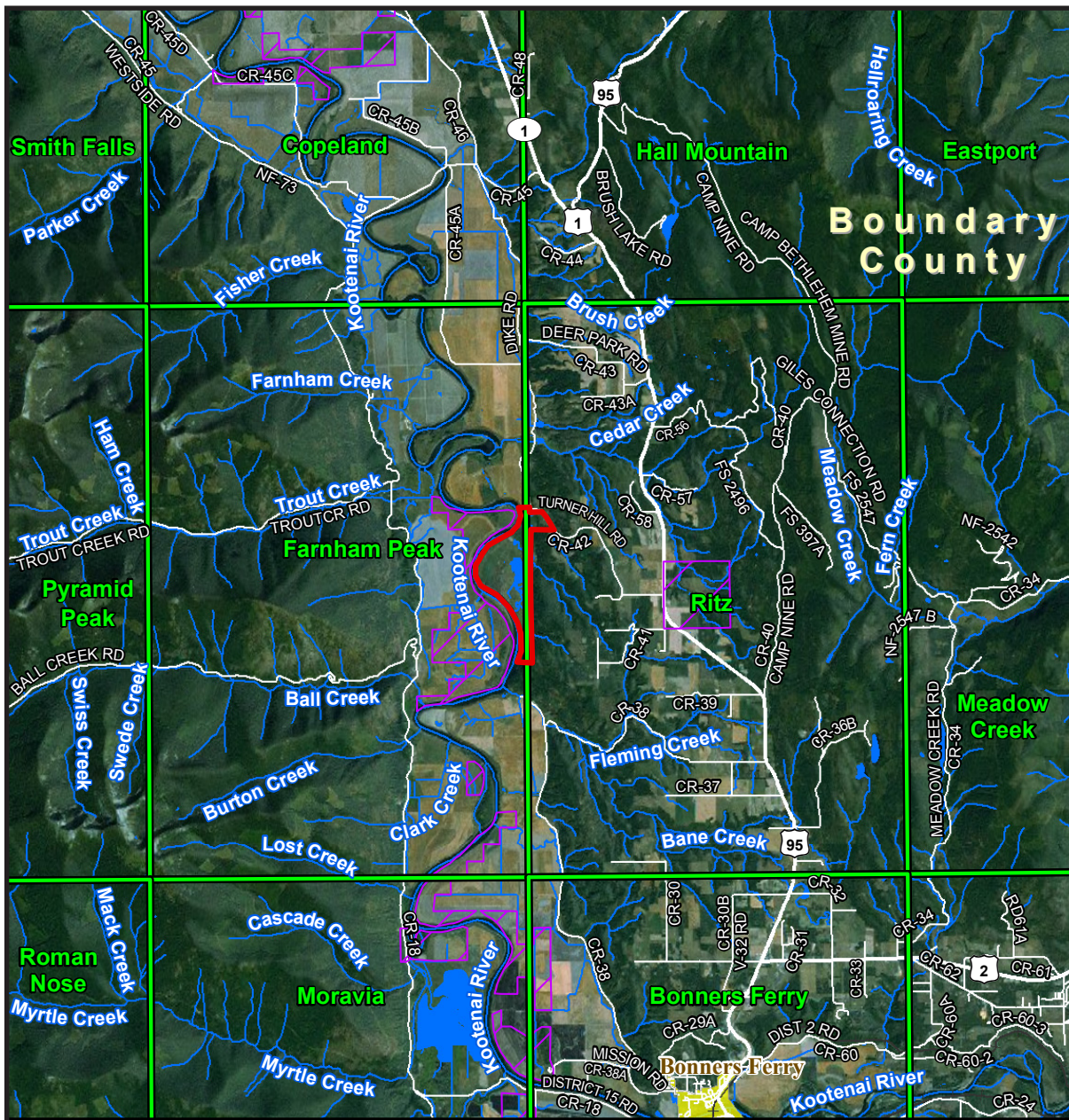
### For more information

If you have any questions about this proposal or would like additional information, please contact Virgil Lee Watts, BPA, at (503) 230-4625 or tollfree at (800) 282-3713 or via e-mail at [vlwatts@bpa.gov](mailto:vlwatts@bpa.gov). You may also contact Scott Soultis at the Kootenai Tribe of Idaho at (208) 267-3620 or via e-mail at [soultis@kootenai.org](mailto:soultis@kootenai.org).







# Kootenai River Valley Conservation Easement

Boundary County, Idaho



## Kootenai River Valley Conservation Easement (693 Acres)

### Farnham Peak and Ritz Quadrangles

-  Subject Property
-  Quad Name and Boundary
-  Kootenai Tribal Lands
-  City Boundary

