

# factsheet

June 2009

## Proposed Big Eddy-Knight Transmission Project

The Bonneville Power Administration is proposing to build a single-circuit 500-kilovolt lattice-steel-tower transmission line that would run from BPA's Big Eddy Substation near The Dalles, Ore., to a new substation about four miles northwest of Goldendale, Wash.

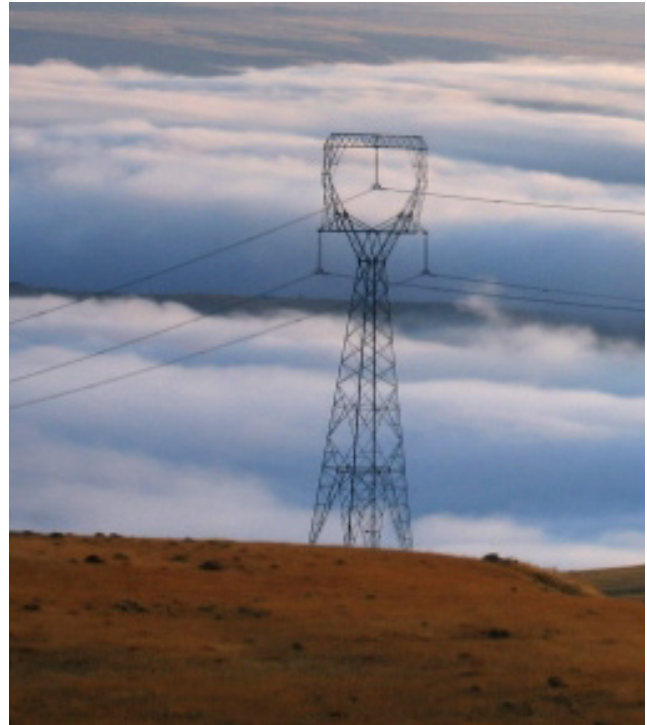
BPA is currently proposing three alternative routes as well as the option not to build the line. Each build alternative would be 26 to 28 miles long and would parallel existing BPA rights-of-way for a portion of each route. A portion of each route would also require new rights-of-way. All routes cross private and state lands. Each route also crosses the Columbia River and the Columbia Gorge National Scenic Area.

Two sites are also being considered for the proposed Knight Substation. The sites are within two miles of each other along an existing BPA transmission line.

BPA is initiating the environmental review for the project. BPA will prepare an environmental impact statement on the construction, operation and maintenance of the proposed transmission line and new substation. Environmental work is expected to take about two years. A decision on whether to proceed with the project is expected by winter 2010.

### Why a new project?

Utilities and power generators (including wind generators and power marketers) have requested the use of BPA's transmission system to transmit their power. To determine if BPA could offer the services requested, the agency studied the transmission system and identified where existing capacity is available and



where the system needs upgrades. The studies found that there is not enough available transmission capacity to accommodate requests to move power from the east side of the Cascade Mountains to load centers, such as Portland, Ore., on the west side of the Cascades. The Big Eddy-Knight project would increase transmission line capacity to meet these requests.

### Next steps

BPA has initiated the public scoping process and is requesting comments from all interested and affected parties including tribes; landowners; concerned



citizens; interest groups; and local, state and federal government agencies about potential environmental impacts that should be considered in the EIS. BPA is also seeking comments about the proposed routes for the transmission line, or other routes that may meet the technical requirements of the transmission system. Scoping will help BPA ensure that a full range of issues related to the proposal is addressed and will identify potentially significant impacts that may result from the proposed project.

The potential environmental issues identified for most transmission line projects include land uses, cultural resources, views, sensitive plants and animals, soil erosion, wetlands, floodplains, and fish and water resources. BPA will study these issues and all issues raised during the scoping period.

Once the scoping period closes, BPA will begin work on a draft EIS using the comments received during scoping. A draft EIS will be released for public review and comment, and public meetings will be held.

BPA will then prepare a final EIS that responds to comments received about the draft EIS. Based on the EIS findings and public input, BPA will make a decision about whether to proceed with the project.

## Meeting schedule

Two open-house style scoping meetings have been scheduled:

- **The Dalles, Ore.** – Tuesday, June 30, 2009, 4 p.m. to 7 p.m. at the Shilo Inn Suites Hotel.
- **Goldendale, Wash.** – Wednesday, July 1, 2009, 4 p.m. to 7 p.m. at the Goldendale High School.

At these informal meetings, BPA will provide maps and other information about the project and have members of the project team available to answer questions and accept oral and written comments. Interested parties may stop by anytime during the open houses.

## For more information

Updated information is available on the BPA Web site at: [http://www.efw.bpa.gov/environmental\\_services/Document\\_Library/Big\\_Eddy-Knight/](http://www.efw.bpa.gov/environmental_services/Document_Library/Big_Eddy-Knight/).

## How to comment

Written scoping comments are due to the address below no later than July 21, 2009. Comments may also be made at the scoping meetings.

Send letters with comments and suggestions on the proposed scope of the draft EIS and requests to be placed on the project mailing list to Bonneville Power Administration, Public Affairs Office – DKE-7, P.O. Box 14428, Portland, OR 97293 4428. Comments and request can be faxed to (503) 230-3285.

Interested parties may also call BPA's toll-free comment line at (800) 622-4519 and leave a message (please include the name of this project). BPA will post all comment letters in their entirety on BPA's Web site at [www.bpa.gov/comment](http://www.bpa.gov/comment).

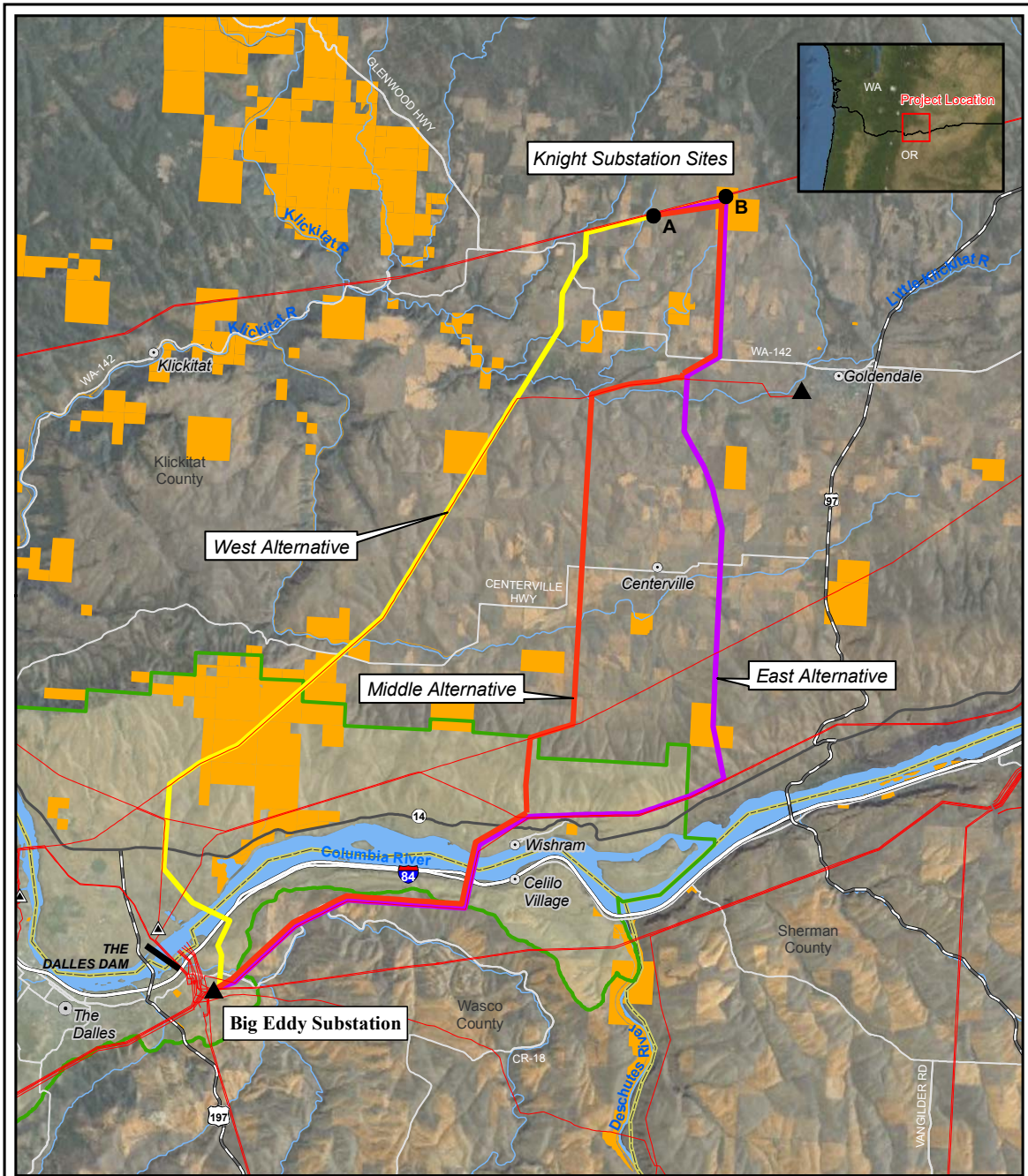
## Contact information

Stacy Mason, Environmental Coordinator, Bonneville Power Administration – KEC-4, P.O. Box 3621, Portland, OR 97208-3621; toll-free telephone (800) 282-3713; direct telephone (503) 230-5455; or e-mail [slmason@bpa.gov](mailto:slmason@bpa.gov).

Interested parties may also contact: Steve Prickett, Project Manager, Bonneville Power Administration – TNP-3, P.O. Box 3621, Portland, OR 97208-3621; toll-free telephone (800) 282-3713; direct telephone (360) 619-6379; or e-mail [sprickett@bpa.gov](mailto:sprickett@bpa.gov). Shelly Fenton, Realty Specialist, Bonneville Power Administration – TERR-3, P.O. Box 3621, Portland, OR 97208-3621; toll-free telephone (800) 282-3713; direct telephone (503) 230-4797; or e-mail [snfenton@bpa.gov](mailto:snfenton@bpa.gov).

# Proposed Big Eddy-Knight Transmission Project

## Wasco County, Oregon, and Klickitat County, Washington



**Proposed Big Eddy-Knight Transmission Project**  
Project Vicinity



- East Alternative
- Middle Alternative
- West Alternative

● Knight Substation Sites

— BPA Transmission Lines

▲ BPA Substations

▲ Non-BPA Owned Substations

□ Counties

■ State Lands

■ Columbia River Gorge National Scenic Area



Date: 1 June 2009

