

factsheet

September 2008

Eola Hills conservation easements protect habitat in Willamette Valley

The Bonneville Power Administration is proposing to fund the acquisition of two conservation easements for wildlife mitigation on approximately 331 acres in the Eola Hills of Oregon's central Willamette Valley (see map).

Located in northeastern Polk County near Salem, the two properties (which are 172 acres and 159 acres in size) include upland prairie, old growth conifer forest, oak woodland, riparian and oak savanna/grassland habitats. These habitats have been identified as priorities for conservation and protection in the 2004 Willamette Subbasin Plan and the 2006 Oregon Conservation Strategy.

Numerous species will benefit from the protection of these two properties, including the endangered Fender's blue butterfly, acorn woodpeckers, purple martins, white-breasted nuthatches, Western bluebirds, Oregon vesper sparrow, Western gray squirrels and black-tailed deer and Roosevelt elk.

Acquiring these easements would provide BPA with credits for partial mitigation of wildlife habitat losses due to construction and operation of the federal hydroelectric facilities on the Willamette River.

Easements expand protected lands

The two properties are adjacent to the 1,466-acre Zena Timber conservation easement, acquired in 2007 through a partnership between BPA, the Trust for Public Land and the Oregon Department of Fish and Wildlife. This proposed easement, combined with the Zena Timber easement, would protect nearly 2,000 acres – one of the largest blocks of protected wildlife habitat in the central Willamette Valley.



Wildlife habitat in the proposed Eola Hills conservation easement area.

What happens next

The easements are expected to be finalized in the fall of 2008. To guide the protection and enhancement of resources on the properties, long-term management plans will be developed in coordination with the landowners, the Trust for Public Land, Oregon Department of Fish and Wildlife and BPA. These plans will address fish and wildlife needs, forestry practices and watershed health as well as public access issues. Once the management plans are approved, any activities that could damage habitat would be prohibited on this land.

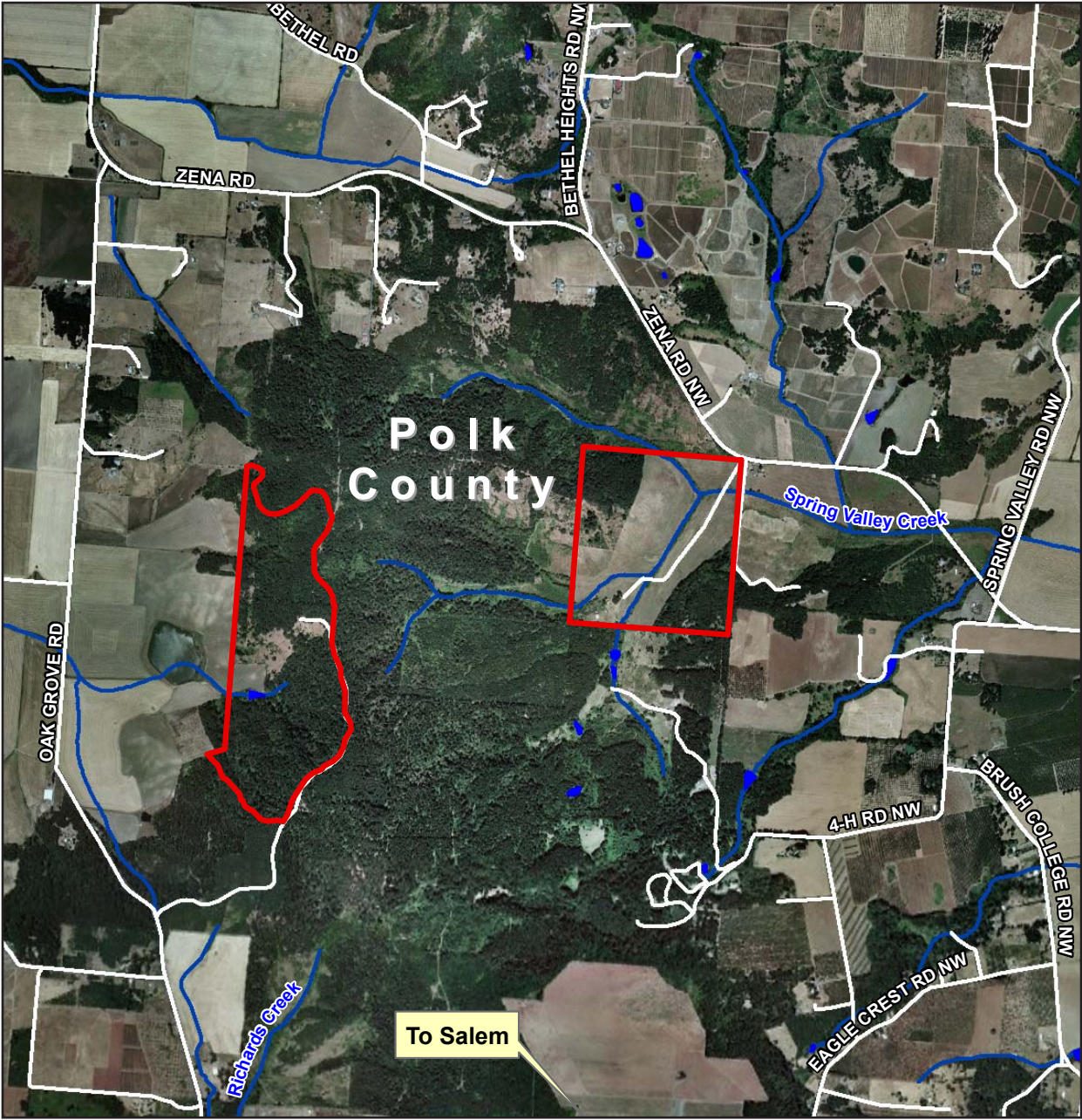
For more information

If you have questions about this proposal or would like additional information, please contact Dorie Welch, Bonneville Power Administration, at (503) 230-5479 or toll free at (800) 282-3713 or dwwelch@bpa.gov. You may also contact Kristin Kovalik from the Trust for Public Land at (541) 382-2092 or Kristin.Kovalik@tpl.org. More information about the Trust for Public Land is available at www.tpl.org.



Eola Hills Conservation Easements

Polk County, Oregon



Eola Hills Conservation Easements
(331 Acres)
Amity Quadrangle

 Subject Property


BONNEVILLE
POWER ADMINISTRATION



Washington
Montana
Oregon
Idaho

0 0.25 0.5 1 Miles