

# factsheet

March 2008

## Camas Creek acquisition protects habitat in southern Idaho

The Bonneville Power Administration is proposing to fund the acquisition of 1,800 acres of land in south central Idaho near the town of Fairfield for wildlife habitat mitigation (see map).

Located in Camas County, the property includes upland, riparian, and shrub steppe habitats and has been identified by the National Audubon Society as an “Important Bird Area,” a site that provides essential habitat for one or more species of birds. Mule deer, blue grouse, waterfowl, raptors, and numerous small game species are among the wildlife that would benefit from this protected habitat.

This acquisition would connect two separate protected areas owned by the Idaho Department of Fish and Game, creating a contiguous wildlife area of almost 5,000 acres. Camas Creek and several of its side channels intersect the property, and this acquisition, combined with areas already owned by Idaho Department of Fish and Game, would protect 6 miles along the creek, providing habitat for various aquatic wildlife species including numerous shorebirds.

Acquiring this property — which consists of three neighboring parcels — would provide BPA with credits for partial mitigation of wildlife habitat losses due to construction and operation of the federal Anderson Ranch Dam on the South Fork of the Boise River.



*Wildlife habitat in the proposed Camas Creek land acquisition area.*

The property would be owned and managed by the Idaho Department of Fish and Game. It borders the 3,100-acre Camas Prairie Centennial Marsh Wildlife Management Area, also owned and managed by Idaho Department of Fish and Game. As owner of the property, Idaho Department of Fish and Game would pay a fee in lieu of taxes to Camas County.

### Land to get management plan

Once this property has been acquired, which is expected in early spring 2008, Idaho Department of Fish and Game will develop a management plan to guide the protection and enhancement of habitat resources on the land. The public will be given the opportunity to review and provide comments on the management plan.



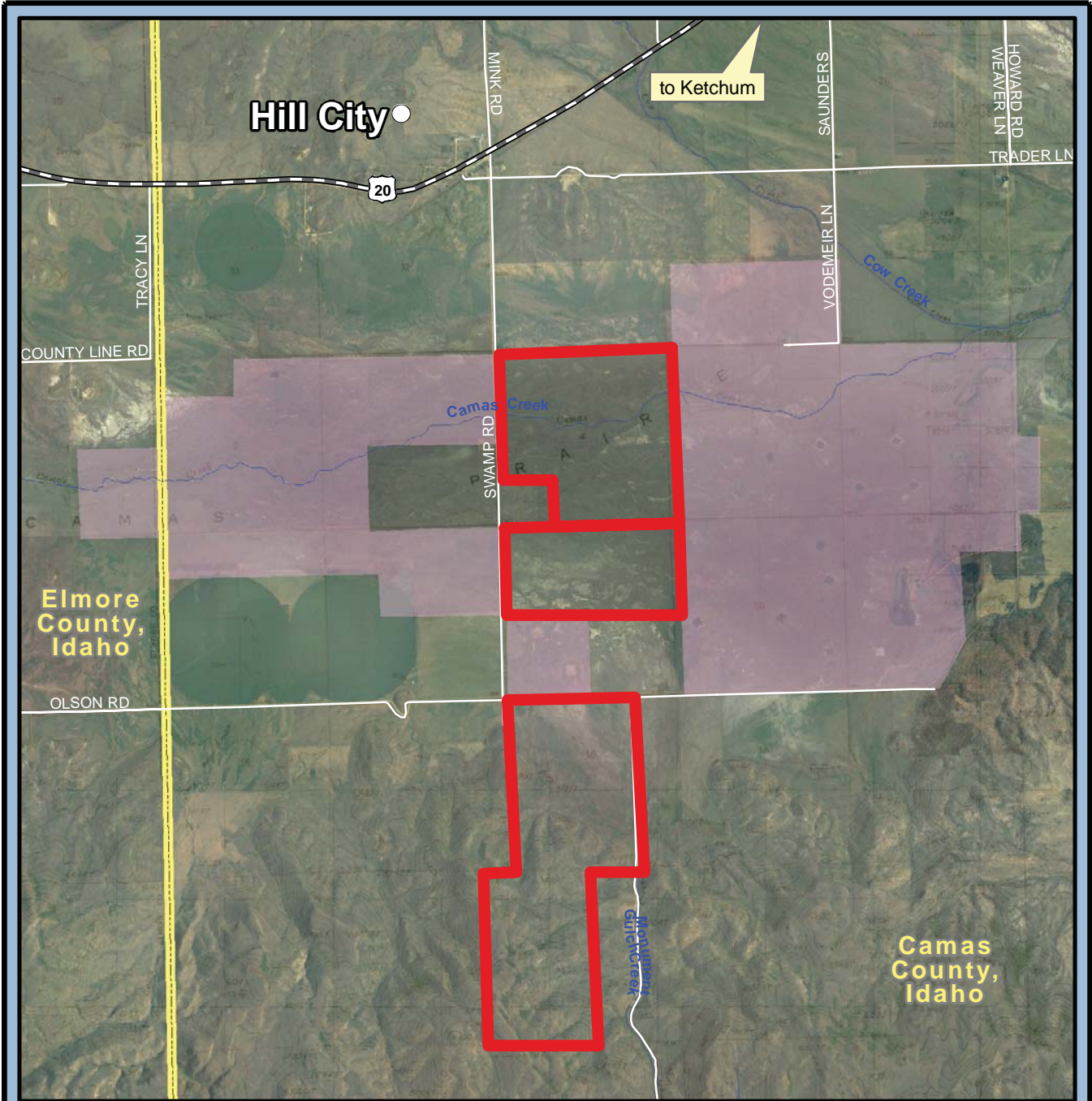
---

Pending BPA approval of the management plan, no forest management, grazing or other land management activities would occur on the property except maintenance and protection, such as weed control or fence maintenance.

## For more information

If you have any questions regarding this proposal or would like additional information, please contact Dorie Welch with the Bonneville Power Administration at (503) 230-5479 or toll-free at (800) 282-4519 or [dwwelch@bpa.gov](mailto:dwwelch@bpa.gov).

For information on the Idaho Department of Fish and Game's mitigation acquisition or wildlife management programs, contact Steve Elam with the Idaho Department of Fish and Game at (208) 324-4350 or [selam@idfg.idaho.gov](mailto:selam@idfg.idaho.gov).



### Camas Creek Land Acquisition

-  Subject Properties
-  Camas Prairie Centennial Marsh Wildlife Management Area
-  County Boundary

