

factsheet

March 2007

Acquisition of wildlife habitat in the Pend Oreille River Wildlife Management Area

The Bonneville Power Administration proposes to fund the acquisition of wildlife mitigation lands in the Pack River watershed in Bonner County, Idaho. BPA funds the Albeni Falls Wildlife Mitigation Program, which is tasked with the acquisition and restoration of key habitats within the larger Pend Oreille watershed. This is a mitigation program that purchases private land to be owned and managed by program participants for the protection, mitigation and enhancement of wildlife affected by the construction and operation of the federal hydroelectric facilities on the Columbia River.

BPA is currently working with the Idaho Department of Fish and Game to acquire and manage a parcel that totals approximately 210 acres (see map) adjacent to the Pack River in Bonner County, Idaho. Acquisition of this property will add to the land base of the Pend Oreille River Wildlife Management Area and will consolidate ownership between two habitat segments within the Pend Oreille Combined Lands Wildlife Management Area, thereby reducing trespass issues and improving management.

The property proposed for acquisition contains riparian and wetland habitats that will provide BPA with credits for partial mitigation of wildlife habitat losses due to the construction of Albeni Falls Dam. The land will be owned and managed by the Idaho Department of Fish and Game for the purpose of wildlife mitigation. A fee in lieu of taxes will be paid to the county by Idaho Department of Fish and Game.

Land to get management plan

Once these lands have been acquired, the Idaho Department of Fish and Game will develop a management plan to guide the protection and enhancement of resources on the property. The public will be given the opportunity to review and provide comments on the management plan. Idaho Department of Fish and Game will provide information about opportunities for public involvement in the development of the management plan for this property in the future.

Pending BPA approval of management plans, no forest management, grazing or other land management activities would occur except maintenance and protection, such as weed control or fence maintenance.

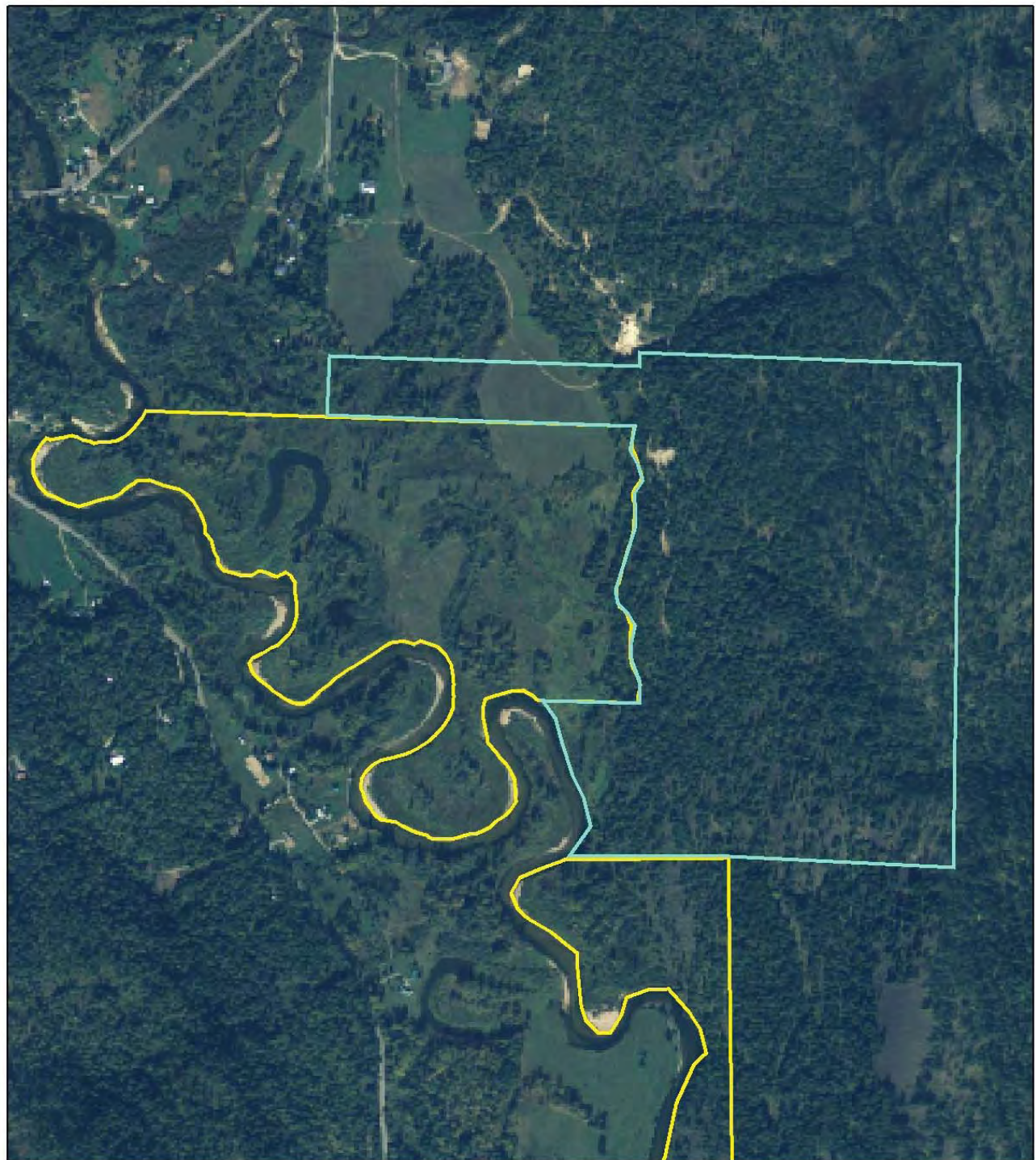
For more information

If you have any questions regarding this proposal or would like additional information, please contact Shannon Stewart at (503) 230-5928 or scstewart@bpa.gov.

For information on the Idaho Department of Fish and Game's land acquisition or management program, you can call Katherine Cousins at (208) 769-1414; or send an e-mail to kcousins@idfg.idaho.gov.



Pend Oreille River Wildlife Management Area, Bonner County, Idaho



Legend

-  Subject Property
-  Pend Oreille Combined Lands Wildlife Management Area

