



# Fact Sheet

HABITAT CONSERVATION – PUBLIC NOTICE

December 2010

## Acquiring the Tall Pines property near Hayden Lake, Idaho, would protect wildlife habitat

**Location:** Hayden, Kootenai County, Idaho

**Acres:** 203

**Partners:** Idaho Department of Fish and Game

**Purpose:** The Bonneville Power Administration is proposing to acquire the 203-acre Tall Pines property located in the Idaho panhandle on the northeastern shore of Hayden Lake to protect wildlife habitat. BPA is partnering with the Idaho Department of Fish and Game on the acquisition. This property is comprised of wetland areas and upland forest that provides habitat for turkey, grouse, woodpeckers, raptors, shorebirds, several species of songbirds, elk, black bear, white-tailed deer, mountain lion, beaver and moose. Protecting this property may have additional habitat benefits for Canada lynx that are listed as threatened with extinction under the federal Endangered Species Act and bald eagles because they may use this property. Funding this acquisition will help mitigate for wildlife habitat losses due to the construction and operation of Albeni Falls Dam. The agreement is expected to be finalized in January 2011.

**Type of action:** BPA will fund the purchase. When the transaction is complete, the Idaho Department of Fish and Game will own and manage the land; BPA will receive a conservation easement. Under the terms of the easement, development restrictions are placed on the land to protect the habitat values in perpetuity.

**Land management:** IDFG will lead the development of a management plan to guide the protection and enhancement of resources on the property. They will provide information about opportunities for public involvement during development of the property's management plan. Pending BPA approval of the management plan, no streamside development, grazing or other land management activities would be allowed other than maintenance and protection, such as weed control or fence maintenance.

### For more information

#### **BONNEVILLE POWER ADMINISTRATION**

Lee Watts, project manager 800-622-4519 or 503-230-4625, [vlwatts@bpa.gov](mailto:vlwatts@bpa.gov)

#### **IDAHO DEPARTMENT OF FISH AND GAME**

Katherine Cousins, mitigation staff biologist  
208-769-1414, [kathy.cousins@idfg.idaho.gov](mailto:kathy.cousins@idfg.idaho.gov)  
406-883-2888, [lynnd@cskt.org](mailto:lynnd@cskt.org)

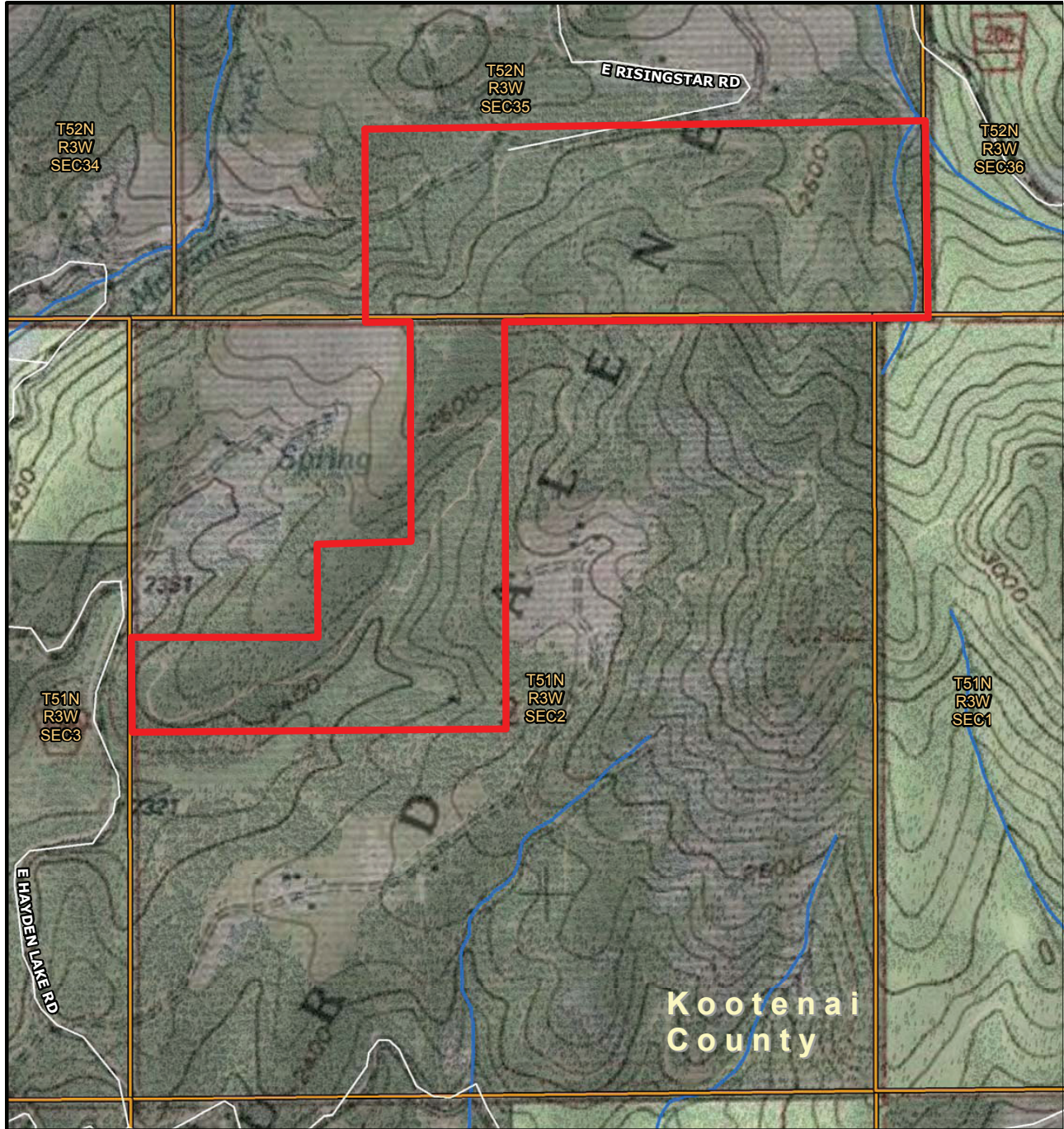
### **BPA Fish and Wildlife Program**

BPA's fish and wildlife program protects and preserves valuable fish and wildlife habitat throughout the Northwest. Since its inception in 1980, the program has set aside more than 300,000 acres of land benefiting hundreds of species. The program protects habitat from development either through outright purchase of land or by purchasing conservation easements on privately owned property. BPA works in partnership with conservation groups, local tribes and state fish and wildlife management agencies.



# Tall Pines Acquisition

Kootenai County, Idaho



## Public Notification Tall Pines Acquisition Hayden Lake Quadrangle

-  Subject Property
-  Township/Range/Section (PLSS)
-  Rivers and Streams



0 750 1,500 3,000 Feet

December 15, 2010