



# Fact Sheet

HABITAT CONSERVATION – PUBLIC NOTICE

December 2010

## BPA funds habitat protection in Lake County, Montana

**Location:** Swan Valley, Lake County, Mont.

**Acres:** 4,477 acres

**Partners:** Montana Department of Fish, Wildlife and Parks; Montana Department of Natural Resources and Conservation; The Nature Conservancy and the United States Fish and Wildlife Service.

**Purpose:** The Bonneville Power Administration recently provided funding to the Montana Department of Fish, Wildlife and Parks to purchase a conservation easement from The Nature Conservancy on 4,477 acres of the Swan Valley in northwestern Montana. Historically, the Swan Valley has been managed for commercial timber harvest. BPA's contribution is part of a much larger conservation-oriented land acquisition orchestrated by The Nature Conservancy. The United States Fish and Wildlife Service provided funding to The Nature Conservancy to purchase a conservation easement on an additional 4,872 acres, also in the Swan Valley. The transaction was completed in November 2010.

These properties will be protected in perpetuity by a conservation easement that will be held by the state of Montana. In exchange for their financial contributions, BPA and USFWS will have the authority to enforce the terms of the easement. The conservation easement will help protect bull trout, grizzly bear, gray wolf, Canada lynx and the flowering plants known as water howellia and Spalding's campion. All of these species are listed as either threatened or endangered under the Endangered Species Act. Protecting this habitat will also benefit resident populations of westslope cutthroat trout, considered at risk by the state of Montana.

BPA's purchase of this easement is a result of a historic agreement among federal agencies states and several

tribes. It is known as the Columbia Basin Fish Accords and was signed in 2008. This conservation easement is an excellent example of the tangible benefits the region is seeing from these partnerships. Funding this easement helps BPA mitigate for resident fish and wildlife habitat losses due to the construction of Hungry Horse Dam.

**Land management:** Previously this land has been managed for commercial timber harvest. Under the new ownership agreement, the land will continue to be managed for timber production, but on a more limited scale that will protect and improve the quality of fish and wildlife habitat on the land. The conservation easement will provide increased protection of all perennial streams through riparian management commitments and will allow continued public access for recreational uses of project lands.

### For more information, contact:

#### BONNEVILLE POWER ADMINISTRATION

Cecilia Brown, project manager

800-622-4519 or 503-230-3462, ckbrown@bpa.gov.

#### MONTANA DEPARTMENT OF FISH, WILDLIFE AND PARKS

Joel Tohtz, regional fisheries mitigation coordinator

406-752-4570, jtohtz@mt.gov.

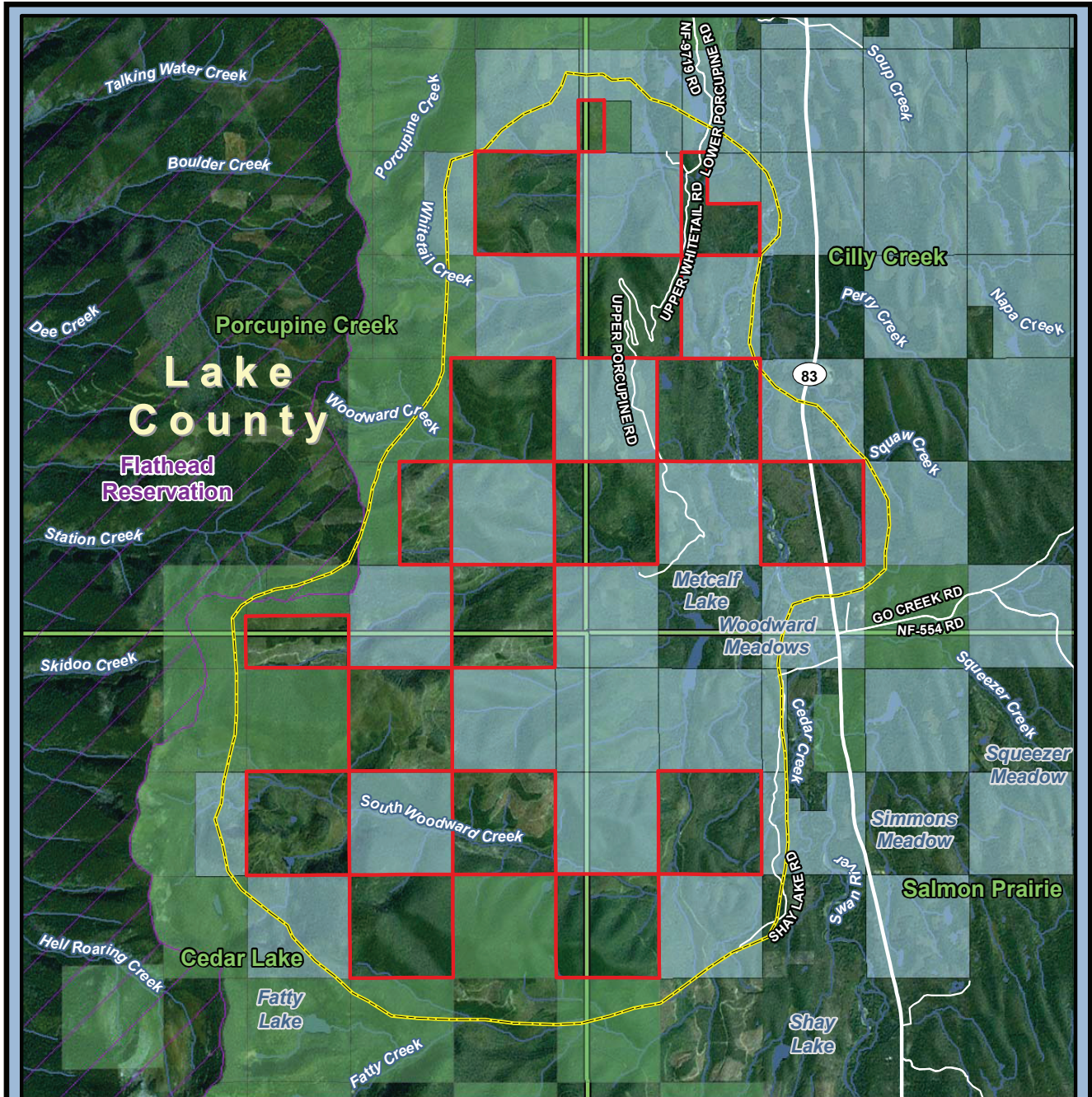
### BPA Fish and Wildlife Program

BPA's fish and wildlife program protects and preserves valuable fish and wildlife habitat throughout the Northwest. Since its inception in 1980, the program has set aside more than 300,000 acres of land benefiting hundreds of species. The program protects habitat from development either through outright purchase of land or by purchasing conservation easements on privately owned property. BPA works in partnership with conservation groups, local tribes and state fish and wildlife management agencies.





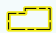
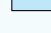


# West Swan Conservation Project

## Lake County, Montana



### West Swan Conservation Project Boundaries

Porcupine Creek, Cedar Lake, Cilly Creek,  
Salmon Prairie Quadrangles  
(9,344 Acres)

- |   |                               |   |                           |
|---|-------------------------------|---|---------------------------|
|  | Subject Properties            |  | US Forest Service         |
|  | West Swan Valley Project Area |  | Montana State Trust Lands |
|  | Indian Reservation            |  | Quad Name and Boundary    |

