



# Fact Sheet

HABITAT CONSERVATION – PUBLIC NOTICE

November 2010

## BPA proposes habitat protection in the Jocko River watershed

**Location:** Flathead Reservation, Lake County, Mont. (see map)

**Acres:** up to 9 acres

**Partners:** Confederated Salish and Kootenai Tribes

**Purpose:** BPA will fund the acquisition by the Confederated Salish and Kootenai Tribes of a 9-acre parcel in the Lower Jocko River watershed to protect and restore fish habitat. This property was selected because the Jocko River watershed is designated as critical habitat for bull trout, a species that is listed as threatened under the federal Endangered Species Act. The Jocko River watershed is a core recovery area for these fish and also supports populations of resident and migratory westslope cutthroat trout, a subspecies that is considered at risk of extinction by local tribes and the state of Montana. This area is significant to the Confederated Salish and Kootenai Tribes because evidence of traditional use goes back hundreds of years. This acquisition is in addition to other similar purchases made by BPA and the Confederated Salish and Kootenai Tribes in the Jocko River watershed earlier this year.

This acquisition will provide BPA with credits for partial mitigation of resident fish habitat losses due to the construction of Hungry Horse Dam and inundation of habitat when the reservoir was filled. Hungry Horse Dam is located on the South Fork of the Flathead River. The purchase is expected to be finalized in December 2010.

**Type of action:** BPA will fund the purchase of the property from a private landowner. When the transaction is complete, the Confederated Salish and Kootenai Tribes will own and manage the land, and BPA will receive a conservation easement that will maintain the land as fish habitat in perpetuity.

**Land management:** The Confederated Salish and Kootenai Tribes will provide long-term stewardship of the land as defined in a management plan, which must be reviewed and approved by BPA. The tribes will provide information about opportunities for public involvement during development of the management plan. The plan will guide the protection and enhancement of habitat resources on the property.

### For more information

**BONNEVILLE POWER ADMINISTRATION**  
Cecilia Brown, Project manager 800-622-4519  
or 503-230-3462, ckbrown@bpa.gov.

**CONFEDERATED SALISH AND KOOTENAI TRIBES**  
Lynn DuCharme, Watershed coordinator  
406-883-2888, lynnd@cskt.org.

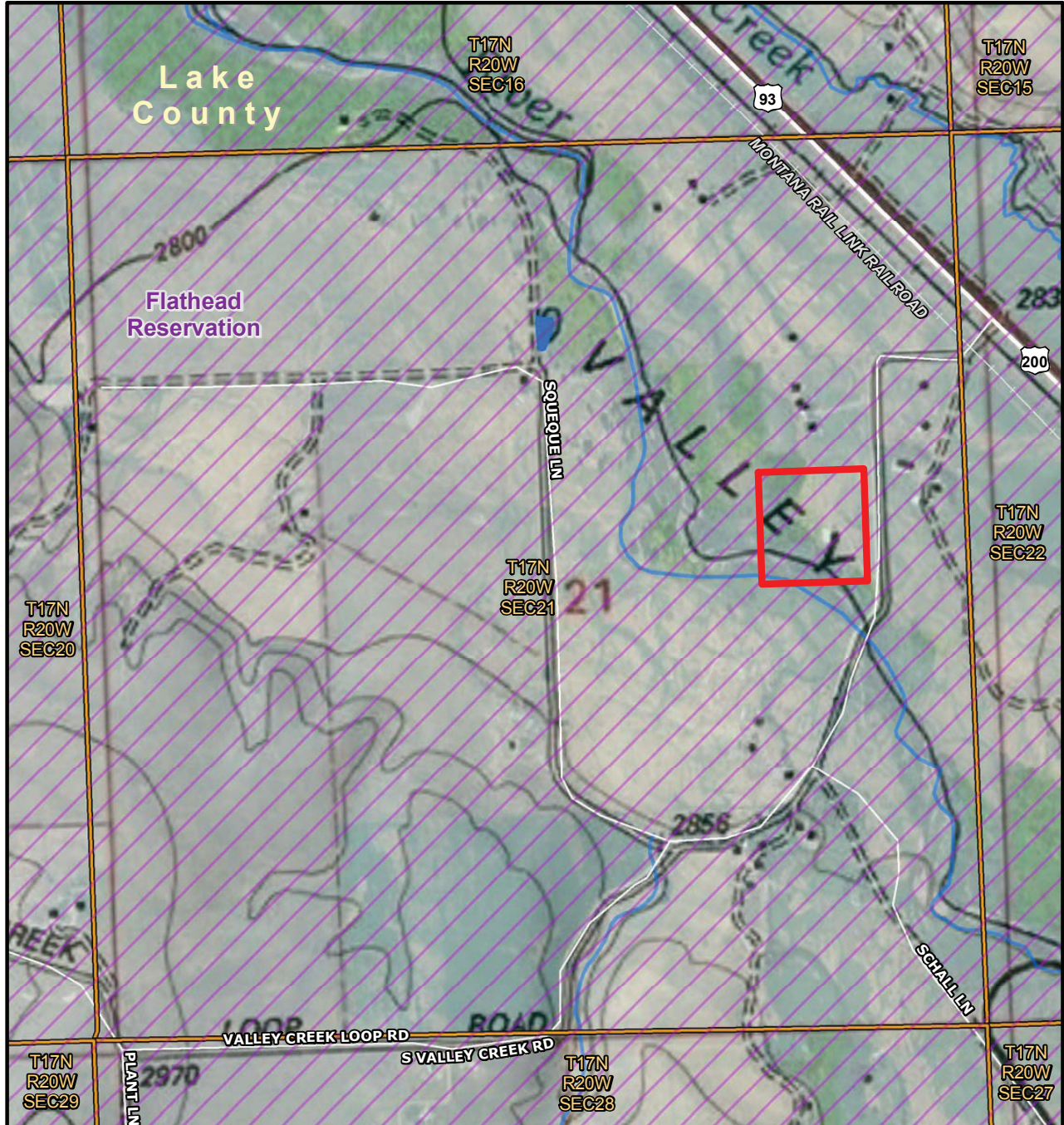
### BPA Fish and Wildlife Program

BPA's fish and wildlife program protects and preserves valuable fish and wildlife habitat throughout the Northwest. Since its inception in 1980, the program has set aside more than 300,000 acres of land benefiting hundreds of species. The program protects habitat from development either through outright purchase of land or by purchasing conservation easements on privately owned property. BPA works in partnership with conservation groups, local tribes and state fish and wildlife management agencies.





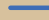




# South Valley Creek Road Conservation Easement

## Lake County, Montana



### South Valley Creek Road Conservation Easement Saddle Mountain Quadrangle

-  Subject Property
-  Township/Range/Section (PLSS)
-  Indian Reservation
-  Waterbody
-  Streams and Rivers
-  Roads
-  Railroads



November 10, 2010

