



Fact Sheet

HABITAT CONSERVATION – PUBLIC NOTICE

August 2010

BPA funds habitat protection in Lemhi River watershed

Location: Lemhi River watershed, Lemhi County, Idaho (see map)

Acres: 2,354

Partners: Idaho state and The Nature Conservancy.

Purpose: This acquisition of a conservation easement in Idaho's Upper Lemhi River watershed will protect and restore anadromous fish habitat. BPA is providing the funding as part of the 2008 Columbia Basin Fish Accords. The accords contribute to NOAA Fisheries' biological opinions for salmon and steelhead in the Columbia River Basin listed under the Endangered Species Act and to the Northwest Power and Conservation Council's fish and wildlife program. Funding this acquisition provides partial mitigation of anadromous and resident fish habitat losses due to the construction and operation of the Columbia River hydroelectric system. The purchase is expected to be finalized in September 2010.

The conservation easement will permanently protect 630 acres of habitat that includes 7.5 miles of river frontage to benefit spring and summer chinook salmon, bull trout and summer steelhead trout that are listed as threatened or endangered under the federal Endangered Species Act salmon. The protected areas include wetland and upland habitat on two properties in the area of Lee, Canyon, Little Springs and Big Timber creeks. The conservation easements on the properties will permanently protect habitat.

Type of action: The purchase will be funded by BPA. Under the terms of the conservation easement, the existing landowner will retain ownership of the land. Development restrictions will ensure that the high quality habitat will be protected in perpetuity.

Land management: The existing landowner will continue to provide long-term stewardship of the properties. A variety of conservation outcomes benefiting chinook salmon, steelhead trout and resident bull trout have been identified and agreed upon by the private owner, the state of Idaho, The Nature Conservancy and BPA. The conservation easement will prohibit development and alteration of the property, with exceptions for ranching and agricultural activities consistent with the purpose of the conservation easement. The easement will provide for water rights and irrigation improvements to return stream flows to the Lemhi and some of its key tributaries. The Nature Conservancy will monitor and enforce the conservation easement and report to BPA. Any future management activities funded by BPA would undergo further environmental review.

For more information, contact

BONNEVILLE POWER ADMINISTRATION:

Joe DeHerrera, wildlife biologist 800-622-4519 or 503-230-3442, jdeherrera@bpa.gov

STATE OF IDAHO:

Mike Edmondson, program manager, Office of Species Conservation 208-334-2189, mike.edmondson@osc.idaho.gov

THE NATURE CONSERVANCY:

Mark Davidson, conservation manager for Central Idaho 208-788-8988 ext. 20, mdavidson@tnc.org

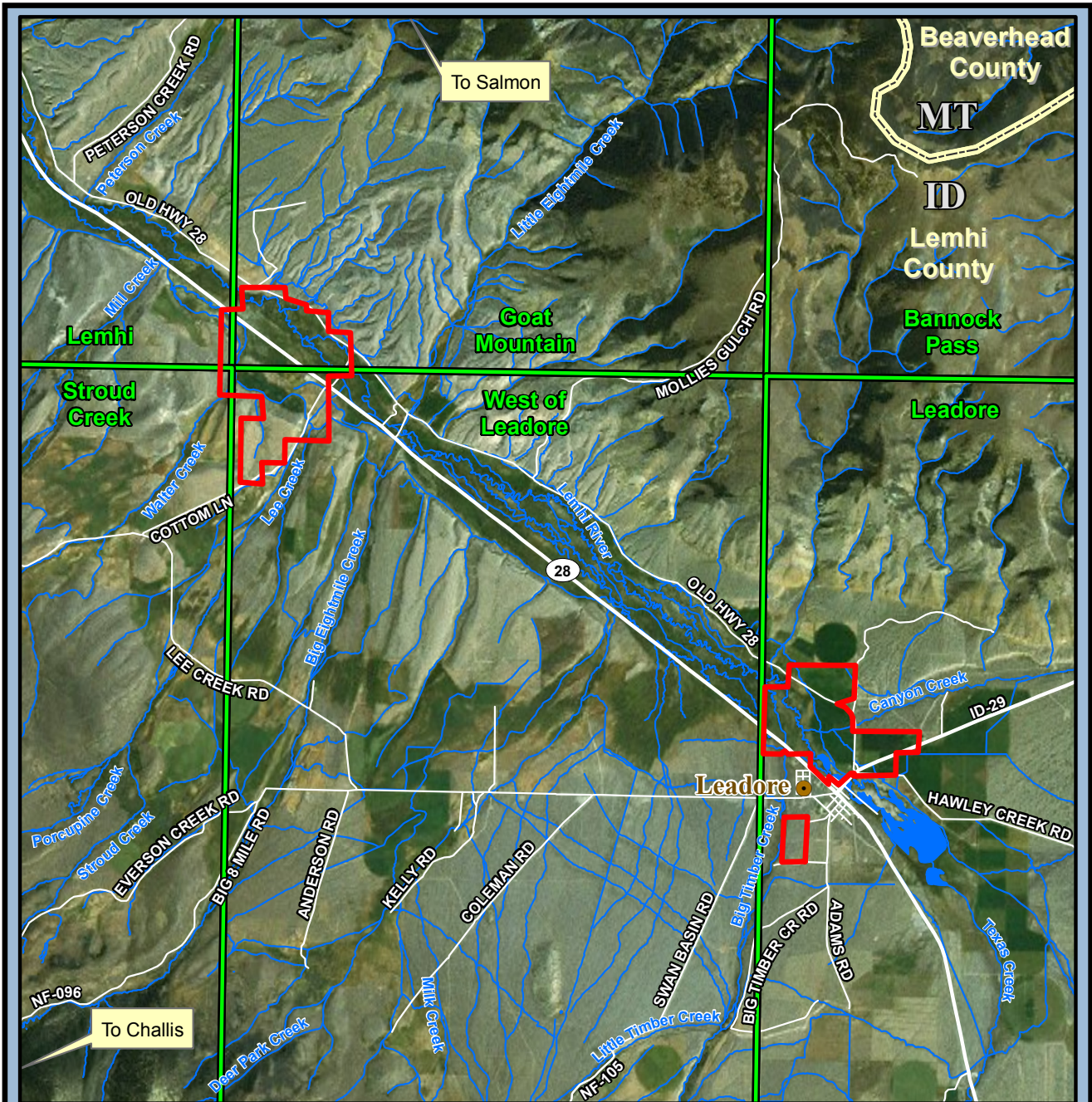
BPA Fish and Wildlife Program

BPA's fish and wildlife program protects and preserves valuable fish and wildlife habitat throughout the Northwest. Since its inception in 1980, the program has set aside more than 300,000 acres of land benefiting hundreds of species. The program protects habitat from development either through outright purchase of land or by purchasing conservation easements on privately owned property. BPA works in partnership with conservation groups, local tribes and state fish and wildlife management agencies.


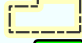
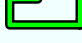


Upper Lemhi River

Lemhi County, Idaho



Upper Lemhi River Acquisition
 Lemhi, Goat Mountain, Stroud Creek, West of Leadore, and Leadore Quadrangles
 (2,355 acres)

-  Subject Property
-  County
-  Quad Name and Boundary

0 1 2 3 4 5 Miles

