



# Fact Sheet

July 2010

## BPA funds habitat acquisition at Mission Creek

**Location:** This property is in northwestern Montana's Lake County within the boundaries of the Flathead Indian Reservation. The land parcel lies between two previous BPA purchases along Mission Creek. The creek is in the Mission Creek Watershed (see map).

**Acres:** 12

**Partner:** BPA is partnering with the Confederated Salish and Kootenai Tribes.

**Species protected:** The land acquisition protects habitat used by bull trout listed as threatened under the Endangered Species Act. Historically, the Mission Creek watershed was one of the two most important spawning drainages for bull trout residing between Flathead Lake and the Clark Fork River.

**Purpose:** Protecting this habitat will partially mitigate for impacts to fish habitat due to the construction and operation of Hungry Horse Dam on the South Fork of the Flathead River. The dam is part of the federal Columbia River hydroelectric system.

**Type of action:** BPA will fund an approximately 12-acre conservation easement in Montana's Mission Creek Watershed for fish habitat mitigation. When the purchase has been finalized, a conservation easement will be placed on the property to ensure fisheries values and habitat are protected in perpetuity.

**Timeline:** The closing date for this land acquisition is expected to be July 30, 2010.

**Land management:** The Confederated Salish and Kootenai Tribes would provide long-term stewardship for the land as defined in a management plan that will guide the protection and enhancement of habitat resources on the property. Pending BPA's approval of the management plan, any activities that could damage habitat (such as harvesting of wood products, livestock grazing or construction of buildings) would be prohibited on this land.

### For more information, contact:

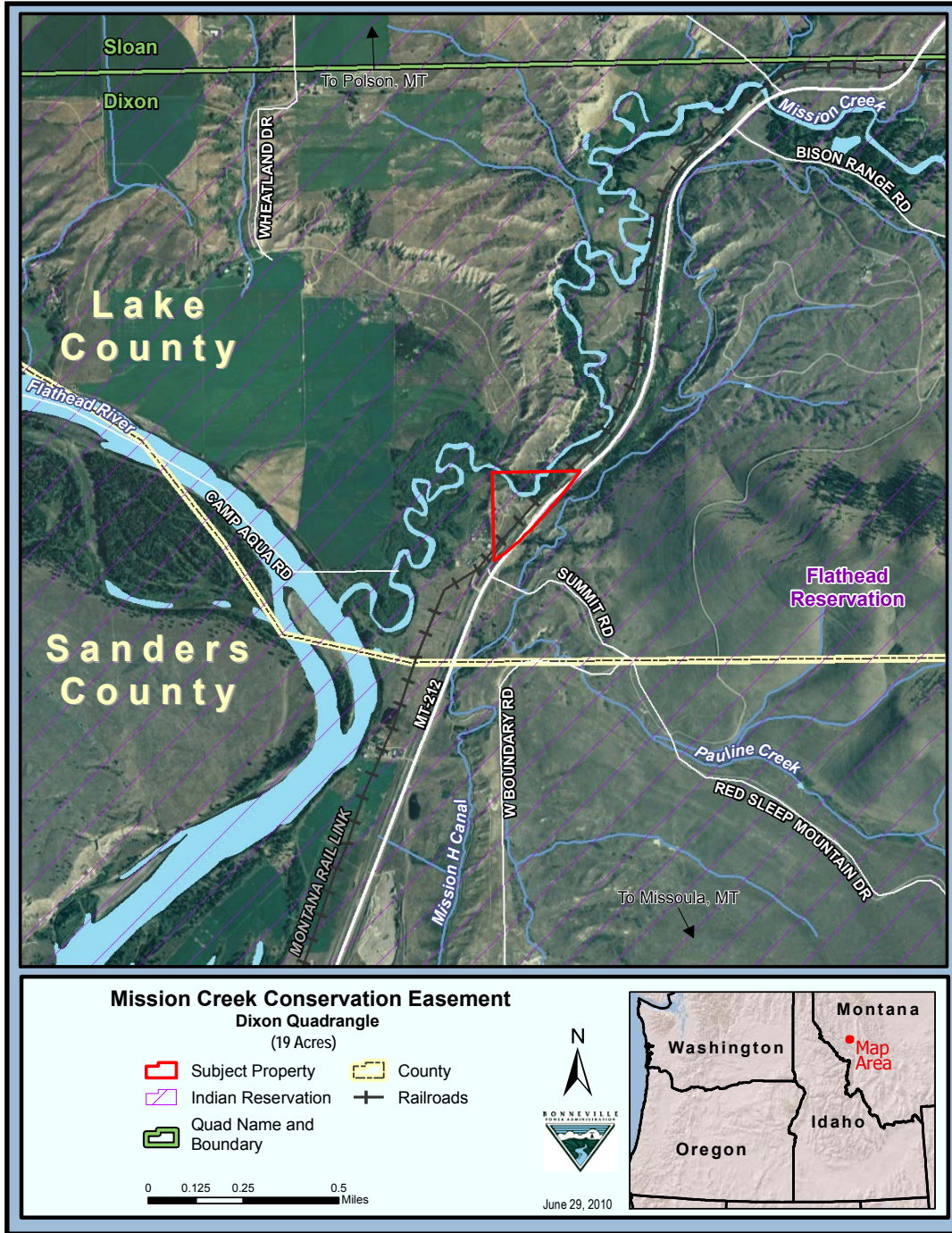
Cecilia Brown  
Bonneville Power Administration  
800-282-3713  
503-230-3462  
[ckbrown@bpa.gov](mailto:ckbrown@bpa.gov)

Lynn DuCharme  
Confederated Salish and Kootenai Tribes  
406-883-2888  
[lynnd@cst.org](mailto:lynnd@cst.org)



# Mission Creek

## Lake and Sanders Counties, Montana



### BPA Fish and Wildlife Program

BPA's fish and wildlife program works to protect and preserve valuable fish and wildlife habitat throughout the Northwest. Since its inception in 1980, BPA has set aside more than 300,000 acres of land for protection, and preserved habitat for hundreds of species. The program works by protecting habitat from development, either through outright purchase of the land, or by placing conservation easements on privately owned property. BPA funds the purchase, and the habitat is protected in perpetuity under management from program partners including conservation groups, local tribes and state fish and wildlife management agencies.