

Fact Sheet

July 2010

BPA funds habitat acquisition at Jocko Spring

Location: This property is in northwestern Montana's Lake County within the boundaries of the Flathead Indian Reservation. The acreage is adjacent to Jocko Spring Creek, which is in the Jocko River Watershed (see map).

Acres: 140

Partner: BPA is partnering with the Confederated Salish and Kootenai Tribes.

Species protected: This land acquisition protects habitat used by bull trout listed as threatened under the Endangered Species Act. The Jocko River Watershed also supports local populations of resident and migratory westslope cutthroat trout, a subspecies that is considered at risk by local tribes and the state of Montana.

Purpose: Protecting this habitat will partially mitigate for impacts to fish habitat due to the construction and operation of Hungry Horse Dam on the South Fork of the Flathead River. The dam is part of the federal Columbia River hydroelectric system.

Type of action: BPA will fund an approximately 140-acre conservation easement in Montana's Jocko River Watershed for fish habitat mitigation. When the purchase has been finalized, a conservation easement will be placed on the property to ensure fisheries values and habitat are protected in perpetuity.

Timeline: The closing date for this land acquisition is expected to be July 30, 2010.

Land management: The Confederated Salish and Kootenai Tribes would provide long-term stewardship for the land as defined in a management plan that will guide the protection and enhancement of habitat resources on the property. Pending BPA's approval of the management plan, any activities that could damage habitat (such as harvesting of wood products, livestock grazing or construction of buildings) would be prohibited.

For more information, contact:

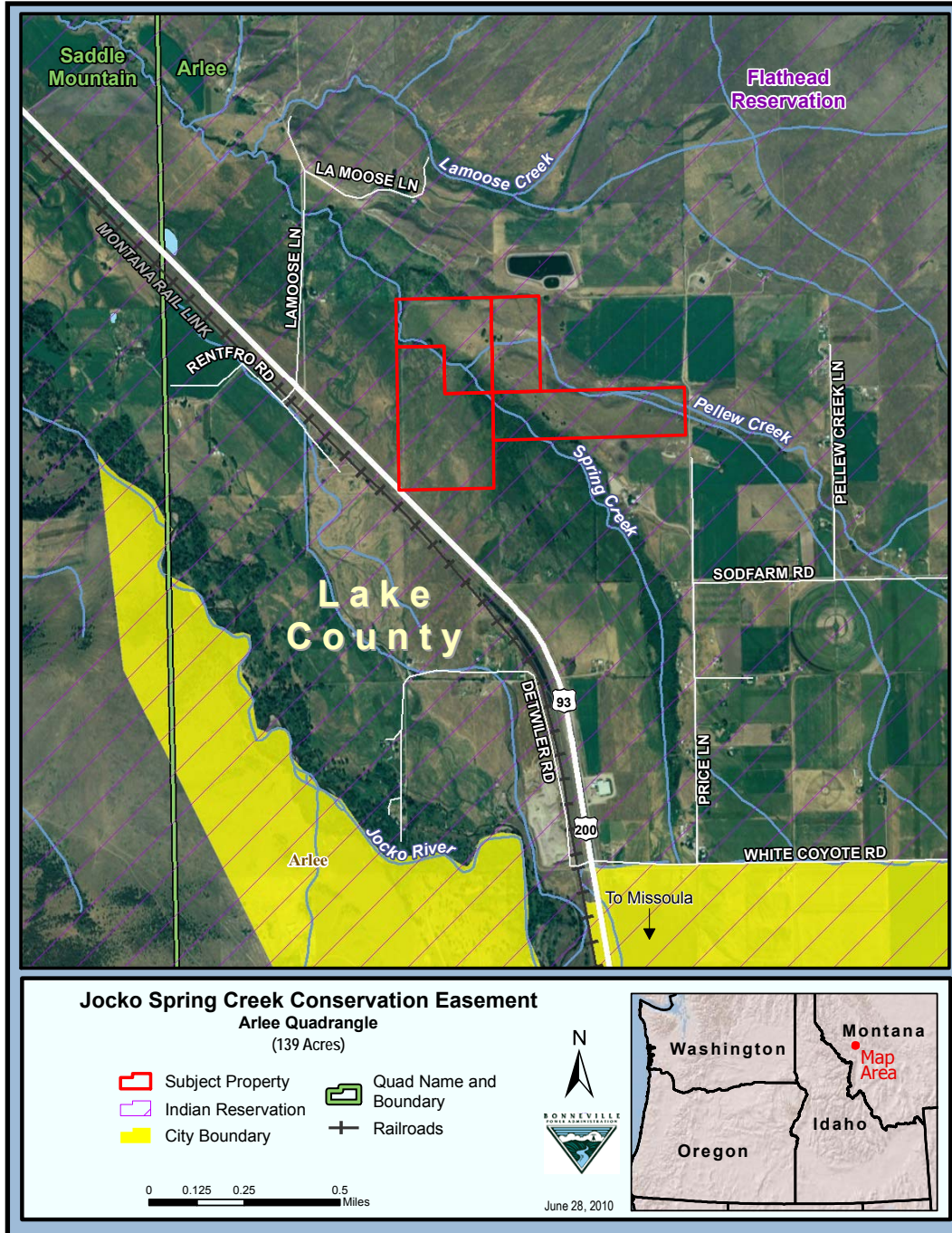
Cecilia Brown
Bonneville Power Administration
800-282-3713
503-230-3462
ckbrown@bpa.gov

Lynn DuCharme
Confederated Salish and Kootenai Tribes
406-883-2888
lynnd@cst.org



Jocko Spring Creek

Lake County, Montana



BPA Fish and Wildlife Program

BPA's fish and wildlife program works to protect and preserve valuable fish and wildlife habitat throughout the Northwest. Since its inception in 1980, BPA has set aside more than 300,000 acres of land for protection, and preserved habitat for hundreds of species. The program works by protecting habitat from development, either through outright purchase of the land, or by placing conservation easements on privately owned property. BPA funds the purchase, and the habitat is protected in perpetuity under management from program partners including conservation groups, local tribes and state fish and wildlife management agencies.