



Fact Sheet

June 2010

Big Island land purchase preserves McKenzie River habitat

The Bonneville Power Administration is partnering with the Eugene Water and Electric Board and The McKenzie River Trust to fund the purchase of a 92-acre parcel in Lane County, Ore., for fish and wildlife habitat protection. The land fronts the McKenzie River and lies near previously restored habitat at Big Island and Keppel-Vickery Park.

The parcel has valuable potential habitat for juvenile chinook salmon and Oregon chub, plus streamside habitat for river otter, mink, ermine, deer, elk, bear, cougar, beaver, waterfowl, raptors and songbirds. The purchase will include placing a perpetual conservation easement on the property to protect its value for fish and wildlife and contribute to an enhanced mosaic of habitat types and plant communities in the area.

To date, BPA has helped protect more than 6,000 acres of fish and wildlife habitat in the Willamette Valley, providing long-lasting benefits that protect water quality, wildlife and habitat in the area. BPA will help fund this property purchase and acquire the conservation easement as partial mitigation for habitat losses due to construction and operation of the federal hydroelectric facilities on the Willamette River.

What happens next

The purchase of this property by the McKenzie River Trust is expected to be finalized in summer 2010. The Trust will own the property and manage the riparian and floodplain areas of the property. The Trust also will develop a management plan to guide the habitat protection and enhancement. The public will be given an opportunity to provide input on the management plan. Pending BPA's approval of the management plan, any activities that could damage habitat will be prohibited.

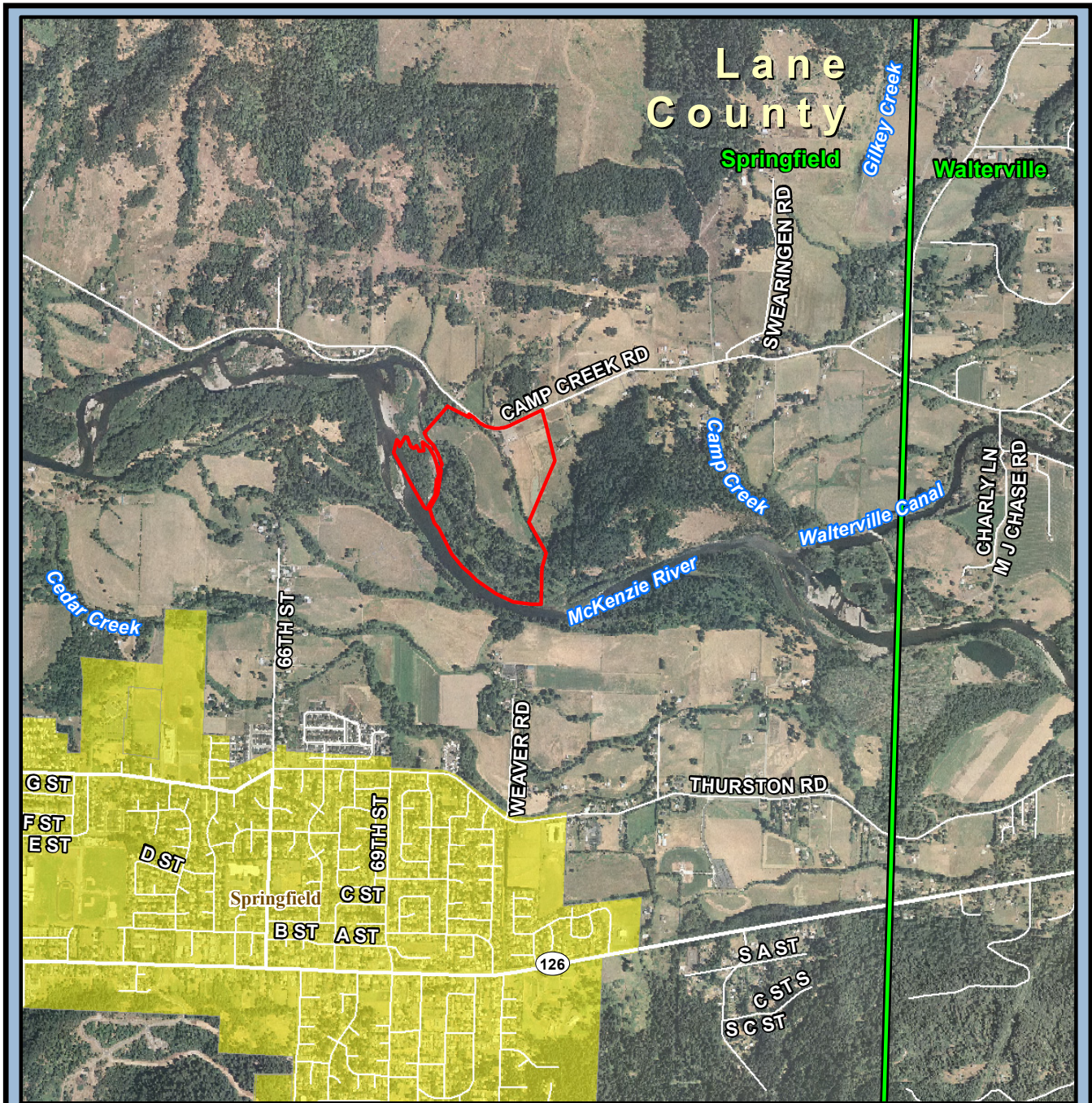
For more information

If you have questions about this proposal or would like additional information, contact Dorie Welch of BPA at 503-230-5497, 800-282-3713 or dwwelch@bpa.gov. You may also contact Ryan C. Ruggiero of the McKenzie River Trust at 541-345-2799 or rruggiero@mckenzie-river.org.






Big Island Addition

Lane County



Big Island Addition Springfield Quadrangle

-  Subject Property
-  Quad Name and Boundary
-  City Boundary

