



Fact Sheet

May 2010

Red River Meadow conservation easement will protect fish, elk habitat

In the heart of the Nez Perce National Forest in north central Idaho, prime meadow habitat serves as early summer elk calving grounds. The Red River runs through this meadow, providing prime spawning and rearing habitat for spring and summer chinook, steelhead, and resident fish.

The Bonneville Power Administration is working with the Rocky Mountain Elk Foundation and the Nez Perce Tribe to purchase a voluntary conservation easement on 246 acres south of Elk City, in Idaho County, Idaho. If acquired, the easement would protect the fisheries values and habitat in perpetuity.

The conservation easement would be placed on two parcels of land. The larger parcel to the north is 176 acres; the smaller southern parcel is 70 acres. The Red River runs almost straight through the southern quarter of the property and meanders naturally in the northern three-quarters.

Acquisition supports restoration efforts

BPA is proposing to fund the acquisition as partial mitigation for fish and wildlife habitat lost to the construction and operation of the Columbia River hydroelectric system. This acquisition also ensures long term protection of the Nez Perce Tribe and BPA's collaborative restoration efforts. The

Red River was altered in the 1950s for mining and agriculture, and its restoration is a high priority for the tribe.

Other partners involved in the project include the local nonprofit organization Framing Our Community, the Idaho Department of Fish and Game, and the Idaho Office of Species Conservation.

Land to get stewardship plan

The land is expected to be acquired in June of 2010. If acquired, The Rocky Mountain Elk Foundation will hold the easement and provide long-term stewardship of the easement agreement, including monitoring and enforcement, to protect and enhance the habitat into the future.

Pending BPA's approval of the stewardship plan, any activities that could damage habitat, such as commercial uses, land development, and livestock grazing, would be prohibited on this property.

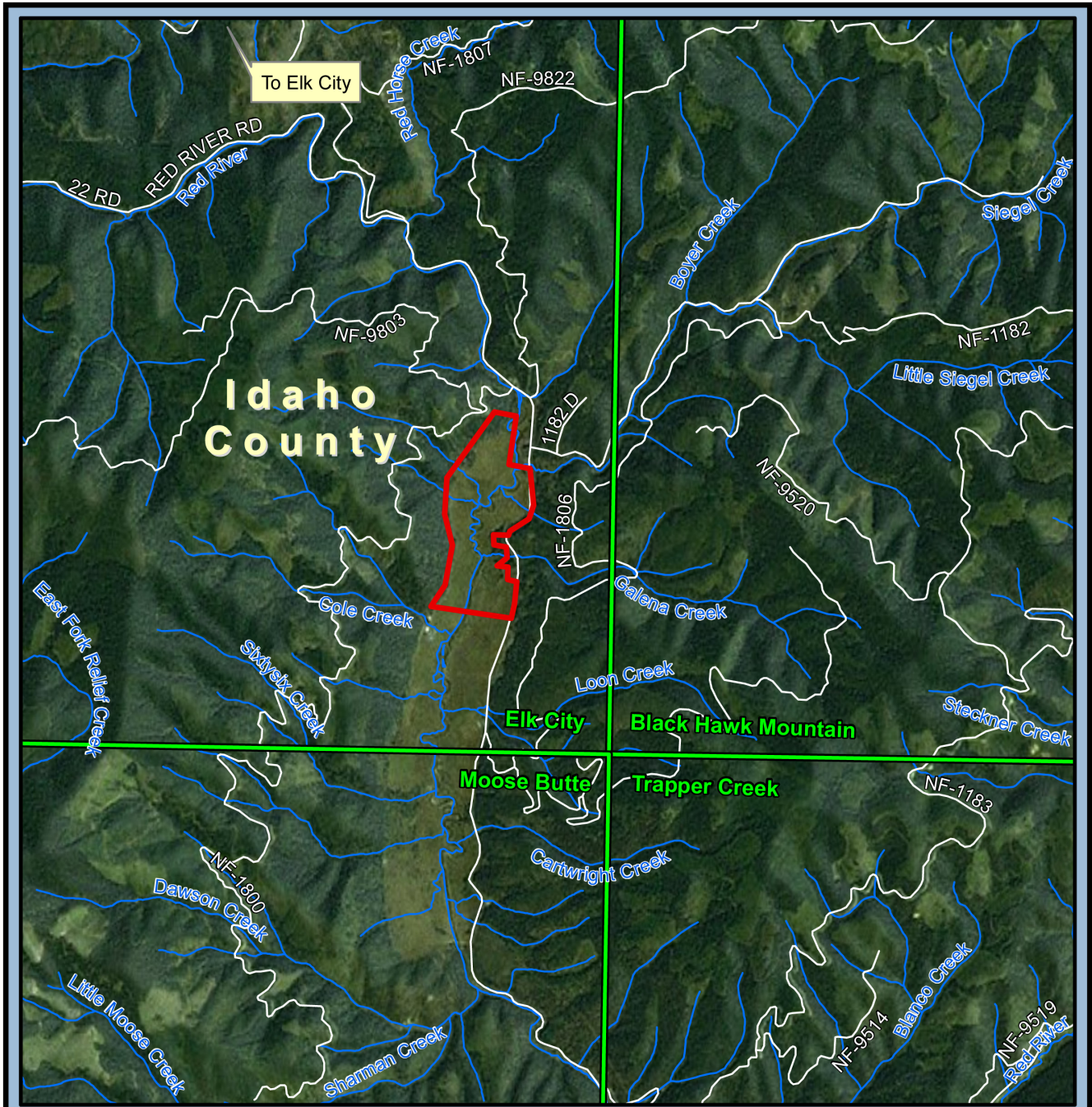
For more information

If you would like more information about this proposal, contact David Kaplowe at 503-230-5365 or djkaplowe@bpa.gov, or call BPA toll-free at 800-282-3713. You may also contact Stephanie Bransford of the Nez Perce Tribe at 208-983-0675 or sbransford@connectwireless.us.





Red River Watershed Conservation Easement

Idaho County, Idaho



Red River Watershed Conservation Easement (263.6 Acres)

Elk City Quadrangle

-  Subject Property
-  Quad Name and Boundary

