



# United States Department of the Interior

**BUREAU OF OCEAN ENERGY**  
Alaska Outer Continental Shelf Region  
3801 Centerpoint Drive, Suite 500  
Anchorage, Alaska 99503-5823

## **DATA ANNOUNCEMENT**

### **Outer Continental Shelf Permits 80-03**

### **Multi-Channel Seismic Reflection Data**

### **Beaufort Sea - Alaska**

#### **Background**

Geophysical Service, Inc., acquired approximately 100 line miles of multi-channel, 2D seismic reflection data on the Federal outer continental shelf (OCS) in the central Beaufort Sea area between February 6 and May 3, 1980. These data were collected under OCS Permit 80-03 issued by the Minerals Management Service (MMS) on December 21, 1979. Under the conditions of the Permit, contract, and subsequent regulations, copies of the OCS portions of data acquired by the Bureau of Ocean Energy Management (formerly MMS) are now available to the public. The Bureau of Ocean Energy Management will make these data available to the public through the U.S. Geological Survey and the National Archive of Marine Seismic Surveys web site (<http://walrus.wr.usgs.gov/NAMSS/>).

Acquisition method: Over ice using vibrators as the energy source. A spread configuration with 24 geophones per group with a 4ms sample rate and a 5 second record length. The shot point interval was 440 feet.

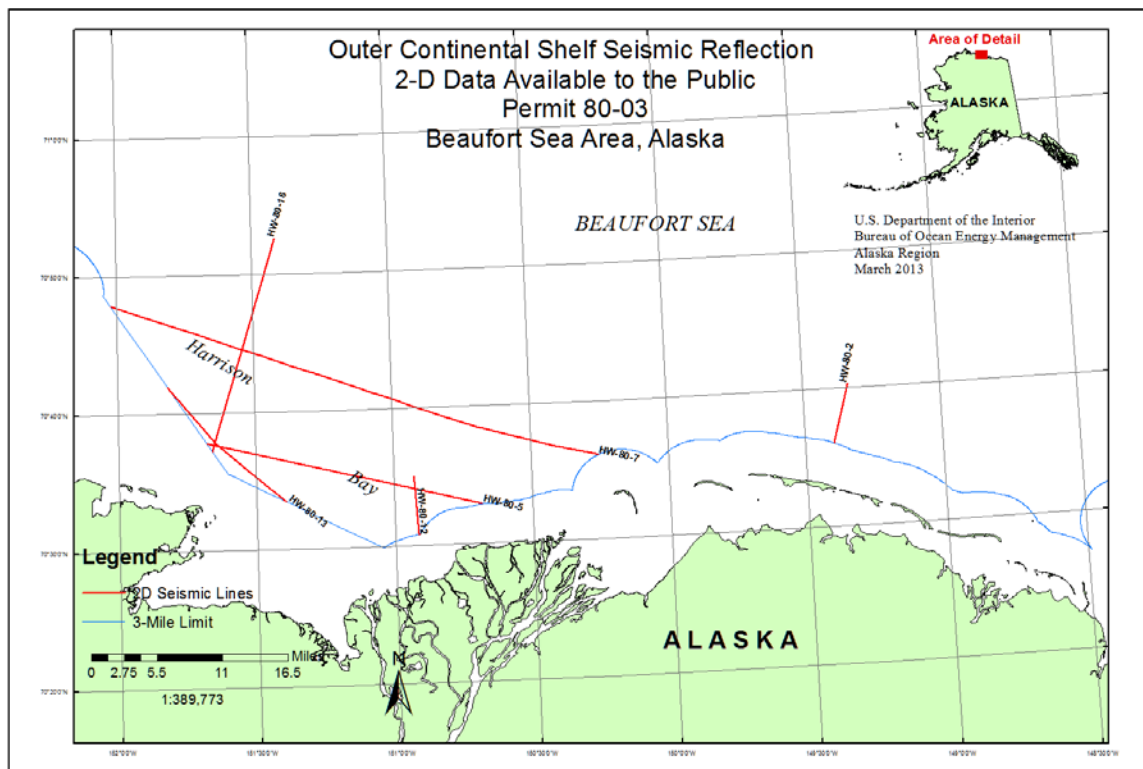
Navigation: The navigation for this survey was provided by Motorola Mini-Ranger Survey Systems.

Processing: The data were originally processed in a 24-fold stack with automatic gain applied. A small scale map that displays the data coverage is included with this announcement. The specific data now available to the public are as follows.

#### **Data Available**

The seismic reflection profiles displayed in an automatic gain control format are available as digital (SEG-Y format) and as image files on DVD. The seismic analog sections have been scanned at 800 dpi resolution and saved as uncompressed TIFF images.

Digital navigation data are available on CD-ROM. A map of the survey seismic lines available is included with this announcement.



These data will also be available upon request from the National Geophysical Data Center (NGDC), Boulder, Colorado (<http://www.ngdc.noaa.gov/mgg/geodas/geodas.html>) or contact Robin Warnken ([Robin.R.Warnken@noaa.gov](mailto:Robin.R.Warnken@noaa.gov)).

For further information or expressions of interest in acquiring the data please contact:

Susan Banet  
 Chief, Resource Analysis Section  
 Resource Evaluation  
 Bureau of Ocean Energy Management  
 3801 Centerpoint Drive, Suite 500  
 Anchorage, Alaska 99503  
 Fax: (907) 334-5322  
 Phone: (907) 334-5323

Additional data release announcements may be found at <http://www.boem.gov/About-BOEM/BOEM-Regions/Alaska-Region/Resource-Evaluation/Released-Geological-and-Geophysical-Data/Index.aspx>