



# United States Department of the Interior

BUREAU OF OCEAN ENERGY MANAGEMENT

Alaska OCS Region

3801 Centerpoint Drive, Suite 500

Anchorage, Alaska 99503-5823

Geological or Geophysical Data or Information Announcement of Availability

## Outer Continental Shelf (OCS) Permit 80-21 NORTH ALEUTIAN OCS PLANNING AREA

Date: September 2016

Permittee: Shell E&P

Type Data: 2D Marine

Survey Dates: April 29 to October 2, 1980

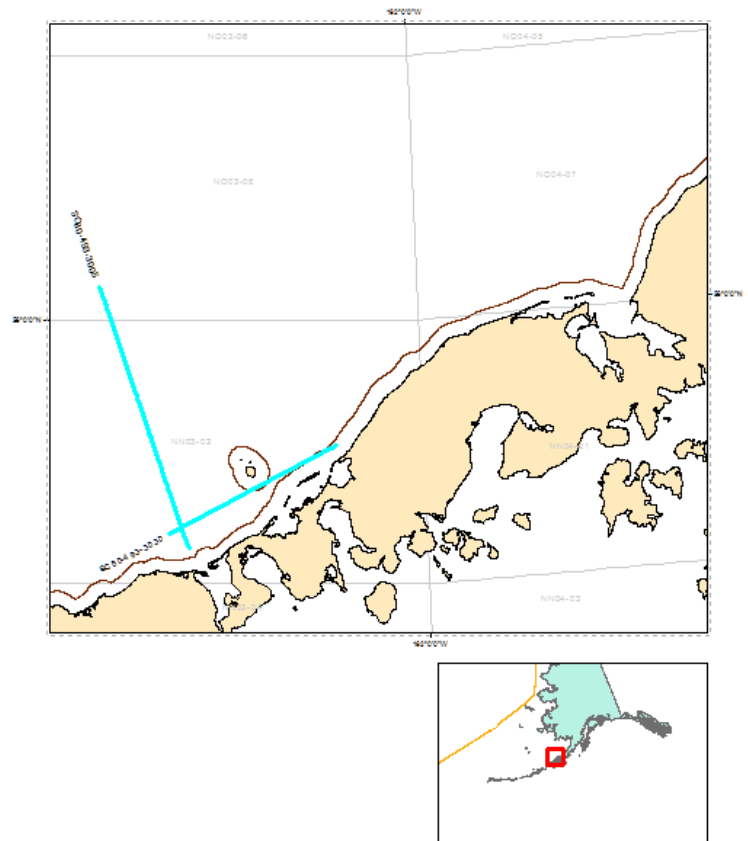
Quantity Data Available: Approximately 72 miles of multi-channel seismic reflection data on the North Aleutian OCS Planning area

Under the conditions of the Permit, acquisition contract, and subsequent regulations, the OCS portions of these data acquired by the MMS (now the Bureau of Ocean Energy Management, BOEM) are now available to the public through the U. S. Geological Survey on the National Archive of Marine Seismic Surveys web site.

Energy source: Open bottom gas gun

Description of Data or Information:

- The seismic reflection profiles processed as stack and migrated section scanned at 800 DPI to TIFF images
- Velocity data in ASCII text file
- Navigation in ASCII text file, NAD83



Contact: For further information or expressions of interest in acquiring the data please go to the USGS National Archive of Marine Seismic Surveys web site (<http://walrus.wr.usgs.gov/NAMSS/>) or

Susan Banet

Bureau of Ocean Energy Management

3801 Centerpoint Drive, Suite 500

Anchorage, Alaska 99503

Fax: (907) 334-5322

Phone: (907) 334-5323

All BOEM Alaska data release announcements may be found at <http://www.boem.gov/About-BOEM/BOEM-Regions/Alaska-Region/Resource-Evaluation/Released-Geological-and-Geophysical-Data/Index.aspx>