



Portland, Oregon Land Cover

EnviroAtlas maps for community landcover data depict major landcover classes at a 1-meter resolution for selected communities. The high resolution urban landcover data provides a base layer for the development of metrics and analyses that illustrate the benefits of natural resources to local communities.

Why is community land cover important?

Land cover data represent the surface components of the land that are physically present and visible; the use of land cover data provides a means to examine landscape patterns and characteristics. EnviroAtlas presents landcover information at two major spatial scales: a national scale represented by 30-meter resolution landcover data and a higher 1-meter resolution for selected communities. Existing National Land Cover Data (NLCD) processed at 30-meter spatial resolution are too coarse to measure many urban phenomena. To support community mapping activities, the EnviroAtlas Team developed a high spatial resolution (1-meter scale) urban land cover (ULC) map that quantifies the type and areal extent of the material composition at earth's surface, such as trees, grass, impervious surfaces, water and barren land. It is a foundational layer for the EnviroAtlas community component that serves as input to approximately 85 sustainability and ecosystem services data layers. These ULC data are derived from one-meter-pixel aerial photos, and they represent the detailed biophysical landscape of urban life and infrastructure. The ULC classes are similar to those in National Land Cover Data (NLCD),^{1,2} but at higher spatial resolution: there are approximately 900 ULC pixels inside the footprint of one 30x30 m NLCD pixel.

Land cover is the ecosystem matrix in which cities are embedded. Land cover data are necessary to sound urban planning and sustainable development. Anticipated users of these data include city and county environmental decision makers, water authorities, wildlife and natural resource managers, citizens, teachers and students. Some potential applications of this map include stormwater and [urban heat island](#) mitigation; habitat, wildlife corridors and riparian buffers; recreation and access to [green space](#); urban forestry; conservation; and urban landscape ecology.

Created from aerial photography, the EnviroAtlas ULC data present a “birds-eye” view that can help identify important features, patterns and relationships in the landscape. Each

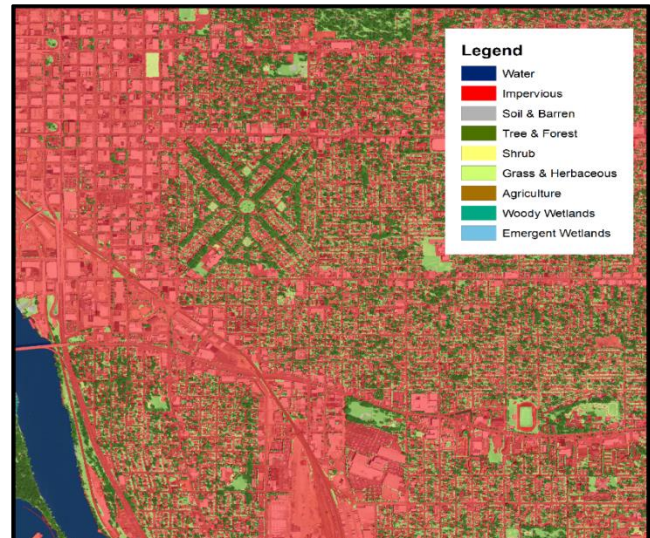


Figure 1 Portland, OR urban land cover overlaid on air photo. Each color represents a specific LC class. Note the fine spatial detail showing individual buildings, trees, and roads

land cover class has characteristic biophysical properties and processes that contribute to a healthy urban environment. The importance of high resolution landcover data is to provide a detailed picture of the urban environment and its ecosystem matrix for analysis of multiple ecosystem services metrics.

How can I use this information?

The ULC data can be used alone or combined visually and analytically with other EnviroAtlas data layers to assess the distribution of natural resources and their benefits to community health and well-being. Approximately 85 EnviroAtlas data layers and metrics incorporate meter-scale urban land cover in their computation, including:

- Total carbon stored in above ground biomass (mt)
- Reduction in annual stormwater runoff (m³/yr)
- Value of asthma exacerbation cases avoided due to sulfur dioxide removed (\$/yr)
- Percent tree cover within 15 m of roadway
- Reduction in median load of nitrites and nitrates, phosphorous, and [total suspended solids](#) (kg/yr) from filtration by trees

Urban land cover data show land cover patterns that control or influence human and ecosystem health in the urban landscape and support numerous lines of investigation.

Metric information derived from this landcover data is summarized by census block groups. Levels of ecosystem services may be compared among different neighborhoods using the census block group reporting framework. Which streets need more trees? What areas are mostly composed of impervious surfaces and subject to urban heat island and stormwater runoff effects? Do urban streams have healthy vegetated buffers? Current landcover data is also useful for analysis of future development scenarios—for example, envisioning planned development alternatives with current policies or more or less stringent policies and development pressures.

Note: The Transparency Slider (found in the i-button drop down menu next to the map layer name) may be used to see through the land cover data and explore how the land cover relates to aerial imagery and other EnviroAtlas layers. Experiment with multiple layer blending using 50–100% transparent land cover overlaid on an imagery basemap.

How were the data for this map created?

These data were generated from digital image processing, air photo interpretation, and supervised classification of aerial photography from the United States Department of Agriculture (USDA) National Agricultural Imagery Program (NAIP).³ NAIP characteristics include three visible and one near-infrared spectral bands, one meter pixel size, nationwide availability on a three year update cycle, and low to no cost. Additionally, several LiDAR datasets acquired from NOAA Digital Coast were used as ancillary datasets to aid in classification.

A random forest statistical method was used in supervised classification to identify six common land cover classes: Impervious Surface, Soil-Barren, Grass-Herbaceous, Tree-Forest, Agriculture, and Water. Ancillary data were used to map two additional land cover classes: Wetlands (Woody and Emergent) and some water bodies (U.S. Fish and Wildlife Service, 2013).⁴ Hand editing was used as needed. Data were organized and manipulated in a GIS. A full description of the remote sensing classification techniques is given in each city's metadata.

Selected Publications

1. U.S. Geological Survey. 2013. National Land Cover Database (NLCD). Accessed March 2015.
 2. Anderson, J.R., E.E. Hardy, J.T. Roach, and R.E. Witmer. 1976. [A land use and land cover classification system for use with remote sensor data](#). Geological Survey Professional Paper 964, U. S. Geological Survey, Washington, D.C.
 3. U.S.D.A. Farm Service Agency. [National Agriculture Imagery Program \(NAIP\)](#). Accessed June 2016.
 4. U.S. Fish and Wildlife Service. [National Wetlands Inventory data](#). Accessed June 2016.
- Myeong, S., D.J. Nowak, P.F. Hopkins, and R.H. Brock. 2001. [Urban cover mapping using digital, high-spatial resolution aerial imagery](#). *Urban Ecosystems* 5: 243–256.

What are the limitations of these data?

All land cover maps are, by their nature, imperfect, and the metrics generated from land cover maps cannot be taken as absolute truth, but as the best estimation of that truth based on the best available data. An accuracy assessment was conducted using approximately 100 photo-interpreted reference points per class. The Portland, Oregon land cover data have an overall user's accuracy of about 79 percent. Full accuracy results are reported in the map metadata. Accuracy information for the source data sets can be found on their respective web sites and metadata.

How can I access these data?

EnviroAtlas data can be viewed in the interactive map, accessed through web services, or downloaded. To acquire the imagery data (NAIP), wetland data (NWI), or water data (NHD) used to generate this land cover, please visit the respective web sites for those datasets.

Where can I get more information?

To learn more about the societal benefits associated with land cover in general, one can find many resources in the literature and on the internet. A small subset of these resources has been listed in the selected publications section below.

In-depth information on the relationships between urban ecosystems, such as green space and human health and well-being, can be found in EPA's [Eco-Health Relationship Browser](#). For additional information on the data creation process, access the metadata for the data layer from the drop down menu on the interactive map table of contents and click again on metadata at the bottom of the metadata summary page for more details. To ask specific questions about these data, please contact the [EnviroAtlas Team](#).

Acknowledgments

EnviroAtlas is a collaborative effort led by EPA. The EnviroAtlas meter scale land cover data for the Portland, Oregon area was developed by Ben Riegel, Jeremy Baynes, and Charles Rudder, EPA Student Services Contractors, and Drew Pilant, EPA.