



# 6 CLIMATE IMPACTS ON WATER-RELATED ILLNESS

## Lead Authors

### Juli Trtanj

National Oceanic and Atmospheric Administration

### Lesley Jantarasami\*

U.S. Environmental Protection Agency

## Contributing Authors

### Joan Brunkard

Centers for Disease Control and Prevention

### Tracy Collier

National Oceanic and Atmospheric Administration and  
University Corporation for Atmospheric Research

### John Jacobs

National Oceanic and Atmospheric Administration

### Erin Lipp

The University of Georgia

### Sandra McLellan

University of Wisconsin-Milwaukee

### Stephanie Moore

National Oceanic and Atmospheric Administration and  
University Corporation for Atmospheric Research

### Hans Paerl

The University of North Carolina at Chapel Hill

### John Ravenscroft

U.S. Environmental Protection Agency

### Mario Sengco

U.S. Environmental Protection Agency

### Jeanette Thurston

U.S. Department of Agriculture

**Acknowledgements:** Sharon Nappier, U.S. Environmental Protection Agency

**Recommended Citation:** Trtanj, J., L. Jantarasami, J. Brunkard, T. Collier, J. Jacobs, E. Lipp, S. McLellan, S. Moore, H. Paerl, J. Ravenscroft, M. Sengco, and J. Thurston, 2016: Ch. 6: Climate Impacts on Water-Related Illness. *The Impacts of Climate Change on Human Health in the United States: A Scientific Assessment*. U.S. Global Change Research Program, Washington, DC, 157–188. <http://dx.doi.org/10.7930/J03F4MH4>

**On the web:** [health2016.globalchange.gov](http://health2016.globalchange.gov)

\*Chapter Coordinator



# 6 CLIMATE IMPACTS ON WATER-RELATED ILLNESS



## Key Findings

### Seasonal and Geographic Changes in Waterborne Illness Risk

**Key Finding 1:** Increases in water temperatures associated with climate change will alter the seasonal windows of growth and the geographic range of suitable habitat for freshwater toxin-producing harmful algae [*Very Likely, High Confidence*], certain naturally occurring *Vibrio* bacteria [*Very Likely, Medium Confidence*], and marine toxin-producing harmful algae [*Likely, Medium Confidence*]. These changes will increase the risk of exposure to waterborne pathogens and algal toxins that can cause a variety of illnesses [*Medium Confidence*].

### Runoff from Extreme Precipitation Increases Exposure Risk

**Key Finding 2:** Runoff from more frequent and intense extreme precipitation events will increasingly compromise recreational waters, shellfish harvesting waters, and sources of drinking water through increased introduction of pathogens and prevalence of toxic algal blooms [*High Confidence*]. As a result, the risk of human exposure to agents of water-related illness will increase [*Medium Confidence*].

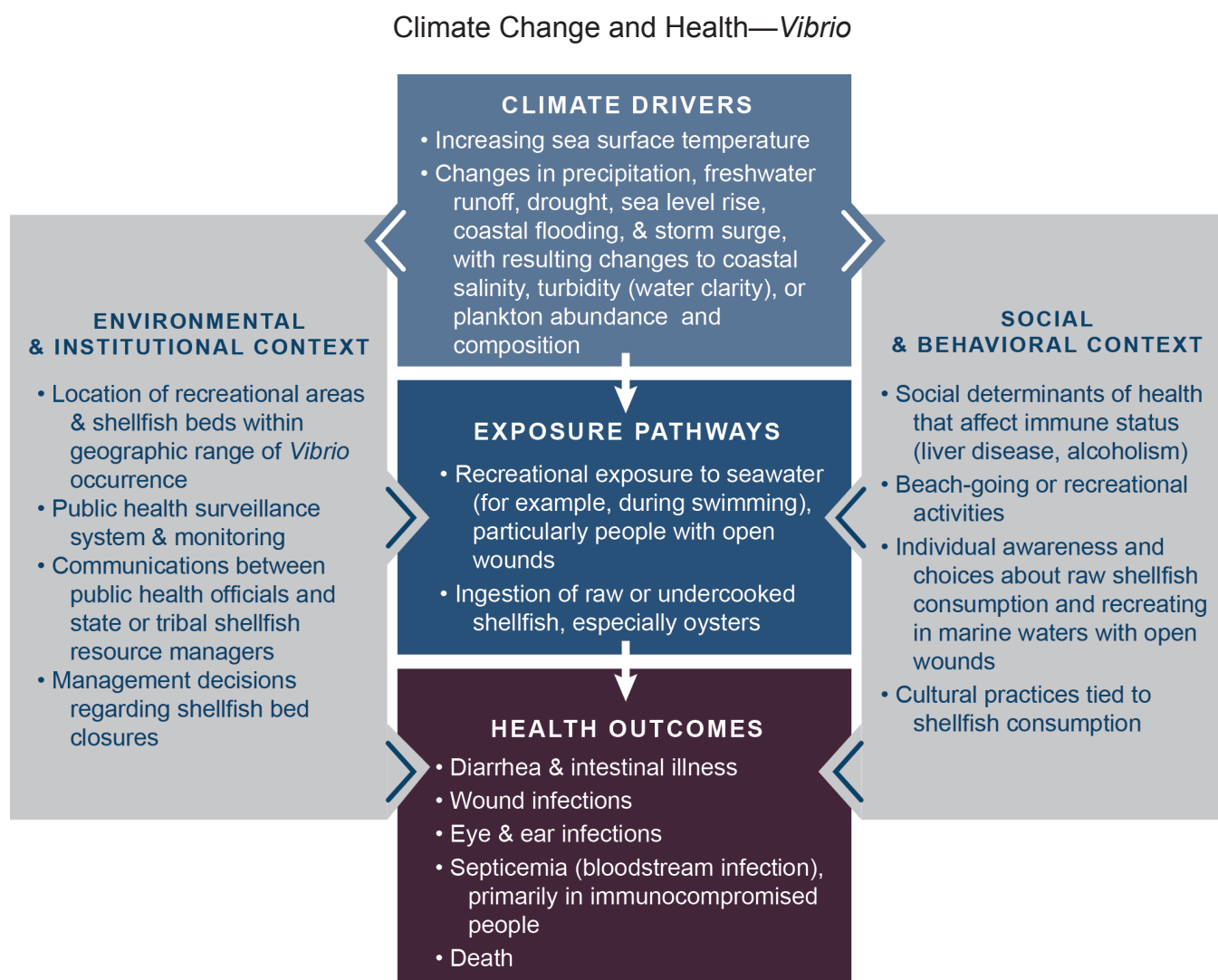
### Water Infrastructure Failure

**Key Finding 3:** Increases in some extreme weather events and storm surges will increase the risk that infrastructure for drinking water, wastewater, and stormwater will fail due to either damage or exceedance of system capacity, especially in areas with aging infrastructure [*High Confidence*]. As a result, the risk of exposure to water-related pathogens, chemicals, and algal toxins will increase in recreational and shellfish harvesting waters and in drinking water where treatment barriers break down [*Medium Confidence*].

## 6.1 Introduction

Across most of the United States, climate change is expected to affect fresh and marine water resources in ways that will increase people's exposure to water-related contaminants that cause illness. Water-related illnesses include waterborne diseases caused by pathogens, such as bacteria, viruses, and protozoa. Water-related illnesses are also caused by toxins produced by certain harmful algae and cyanobacteria (also known as blue-green algae) and by chemicals introduced into the environment by human activities. Exposure occurs through ingestion, inhalation, or direct contact with contaminated drinking or recreational water and through consumption of fish and shellfish.

Factors related to climate change—including temperature, precipitation and related runoff, hurricanes, and storm surge—affect the growth, survival, spread, and virulence or toxicity of agents (causes) of water-related illness. Heavy downpours are already on the rise and increases in the frequency and intensity of extreme precipitation events are projected for all U.S. regions.<sup>1</sup> Projections of temperature, precipitation, extreme events such as flooding and drought, and other climate factors vary by region of the United States, and thus the extent of climate health impacts will also vary by region.



**Figure 1:** This conceptual diagram for an example of infection by *Vibrio* species (*V. vulnificus*, *V. parahaemolyticus*, or *V. alginolyticus*) illustrates the key pathways by which humans are exposed to health threats from climate drivers. These climate drivers create more favorable growing conditions for these naturally occurring pathogens in coastal environments through their effects on coastal salinity, turbidity (water clarity), or plankton abundance and composition. Longer seasons for growth and expanding geographic range of occurrence increase the risk of exposure to *Vibrio*, which can result in various potential health outcomes (center boxes). These exposure pathways exist within the context of other factors that positively or negatively influence health outcomes (gray side boxes). Key factors that influence vulnerability for individuals are shown in the right box and include social determinants of health and behavioral choices. Key factors that influence vulnerability at larger scales, such as natural and built environments, governance and management, and institutions, are shown in the left box. All of these influencing factors can affect an individual's or a community's vulnerability through changes in exposure, sensitivity, and adaptive capacity and may also be affected by climate change. See Ch. 1: Introduction for more information.

Waterborne pathogens are estimated to cause 8.5% to 12% of acute gastrointestinal illness cases in the United States, affecting between 12 million and 19 million people annually.<sup>2,3,4</sup> Eight pathogens, which are all affected to some degree by climate, account for approximately 97% of all suspected waterborne illnesses in the United States: the enteric viruses norovirus, rotavirus, and adenovirus; the bacteria *Campylobacter jejuni*, *E. coli* O157:H7, and *Salmonella enterica*; and the protozoa *Cryptosporidium* and *Giardia*.<sup>5</sup>

Specific health outcomes are determined by different exposure pathways and multiple other social and behavioral factors, some of which are also affected by climate (Figure 1). Most research to date has focused on understanding how climate drivers affect physical and ecological processes that act as key exposure pathways for pathogens and toxins, as shown by the arrow moving from the top to the middle box in Figure 1. There is currently less information and fewer methods with which to measure actual human exposure and incidence of illness based on those physical and ecological metrics (arrow moving from middle to bottom box in Figure 1). Thus, it is often not possible to quantitatively project future health outcomes from water-related illnesses under climate change (bottom box in Figure 1).

This chapter covers health risks associated with changes in natural marine, coastal, and freshwater systems and water infrastructure for drinking water, wastewater, and stormwater (*Legionella* in aerosolized water is covered in Ch. 3: Air Quality Impacts). This chapter also includes fish and shellfish illnesses associated with the waters in which they grow and which are affected by the same climate factors that affect drinking and recreational waters (impacts related to handling and post-harvest processing of seafood are covered in Ch. 7: Food Safety). The framing of this chapter addresses sources of contaminations, exposure pathways, and health outcomes when available. Based on the available data and research, many of the examples are regionally focused and make evident that the impact of climate change on water-related illness is inherently regional. Table 1 lists various health outcomes that can result from exposure to agents of water-related illness as well as key climate-related changes affecting their occurrence.

Whether or not illness results from exposure to contaminated water, fish, or shellfish is dependent on a complex set of factors, including human behavior and social determinants of health that may affect a person's exposure, sensitivity, and adaptive capacity (Figure 1; see also Ch. 1: Introduction and

**Table 1. Climate Sensitive Agents of Water Related Illness**

Pathogen or Toxin Producer	Exposure Pathway	Selected Health Outcomes & Symptoms	Major Climate Correlation or Driver (strongest driver(s) listed first)
Algae: Toxigenic marine species of <i>Alexandrium</i> , <i>Pseudo-nitzschia</i> , <i>Dinophysis</i> , <i>Gambierdiscus</i> ; <i>Karenia brevis</i>	Shellfish Fish Recreational waters (aerosolized toxins)	Gastrointestinal and neurologic illness caused by shellfish poisoning (paralytic, amnesic, diarrhetic, neurotoxic) or fish poisoning (ciguatera). Asthma exacerbations, eye irritations caused by contact with aerosolized toxins ( <i>K. brevis</i> ).	Temperature (increased water temperature), ocean surface currents, ocean acidification, hurricanes ( <i>Gambierdiscus</i> spp. and <i>K. brevis</i> )
Cyanobacteria (multiple freshwater species producing toxins including microcystin)	Drinking water Recreational waters	Liver and kidney damage, gastroenteritis (diarrhea and vomiting), neurological disorders, and respiratory arrest.	Temperature, precipitation patterns
Enteric bacteria & protozoan parasites: <i>Salmonella enterica</i> ; <i>Campylobacter</i> species; Toxigenic <i>Escherichia coli</i> ; <i>Cryptosporidium</i> ; <i>Giardia</i>	Drinking water Recreational waters Shellfish	Enteric pathogens generally cause gastroenteritis. Some cases may be severe and may be associated with long-term and recurring effects.	Temperature (air and water; both increase and decrease), heavy precipitation, and flooding
Enteric viruses: enteroviruses; rotaviruses; noroviruses; hepatitis A and E	Drinking water Recreational waters Shellfish	Most cases result in gastrointestinal illness. Severe outcomes may include paralysis and infection of the heart or other organs.	Heavy precipitation, flooding, and temperature (air and water; both increase and decrease)
<i>Leptospira</i> and <i>Leptonema</i> bacteria	Recreational waters	Mild to severe flu-like illness (with or without fever) to severe cases of meningitis, kidney, and liver failure.	Flooding, temperature (increased water temperature), heavy precipitation
<i>Vibrio</i> bacteria species	Recreational waters Shellfish	Varies by species but include gastroenteritis ( <i>V. parahaemolyticus</i> , <i>V. cholerae</i> ), septicemia (bloodstream infection) through ingestion or wounds ( <i>V. vulnificus</i> ), skin, eye, and ear infections ( <i>V. alginolyticus</i> ).	Temperature (increased water temperature), sea level rise, precipitation patterns (as it affects coastal salinity)



Ch. 9: Populations of Concern). Water resource, public health, and environmental agencies in the United States provide many public health safeguards to reduce risk of exposure and illness even if water becomes contaminated. These include water quality monitoring, drinking water treatment standards and practices, beach closures, and issuing advisories for boiling drinking water and harvesting shellfish.

Many water-related illnesses are either undiagnosed or unreported, and therefore the total incidence of waterborne disease is underestimated (see Ch. 1: Introduction for discussion of public health surveillance data limitations related to “reportable” and “nationally notifiable” diseases).<sup>6,7</sup> On average, illnesses from pathogens associated with water are thought to be underestimated by as much as 43-fold, and may be underestimated by up to 143 times for certain *Vibrio* species.<sup>7</sup>

## 6.2 Sources of Water-Related Contaminants

The primary sources of water contamination are human and animal waste and agricultural activities, including the use of fertilizers. Runoff and flooding resulting from expected increases in extreme precipitation, hurricane rainfall, and storm surge (see Ch. 4: Extreme Events) may increase risks of contamination. Contamination occurs when agents of water-related illness and nutrients, such as nitrogen and phosphorus, are carried from

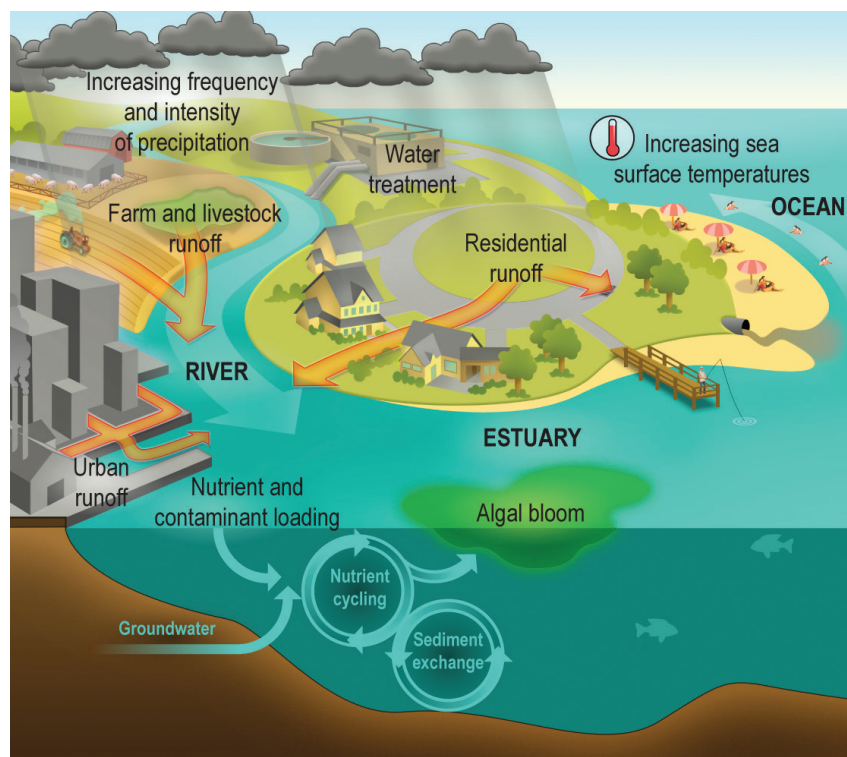
urban, residential, and agricultural areas into surface waters, groundwater, and coastal waters (Figure 2). The nutrient loading can promote growth of naturally occurring pathogens and algae. Human exposure occurs via contamination of drinking water sources (page 163), recreational waters (page 164), and fish and shellfish (page 165).

Water contamination by human waste is tied to failure of local urban or rural water infrastructure, including municipal wastewater, septic, and stormwater conveyance systems. Failure can occur either when rainfall and subsequent runoff overwhelm the capacity of these systems—causing, for example, sewer overflows, basement backups, or localized flooding—or when extreme events like flooding and storm surges damage water conveyance or treatment infrastructure and result in reduction or loss of performance and functionality. Many older cities in the Northeast and around the Great Lakes region of the United States have combined sewer systems (with stormwater and sewage sharing the same pipes), which are prone to discharging raw sewage directly into surface waters after moderate to heavy rainfall.<sup>8</sup> The amount of rain that causes combined sewer overflows is highly variable between cities because of differences in infrastructure capacity and design, and ranges from 5 mm (about 0.2 inches) to 2.5 cm (about 1 inch).<sup>9,10</sup> Overall, combined sewer overflows are expected to

increase,<sup>11</sup> but site-specific analysis is needed to predict the extent of these increases (see Case Study on page 164). Extreme precipitation events will exacerbate existing problems with inadequate, aging, or deteriorating wastewater infrastructure throughout the country.<sup>12,13</sup> These problems include broken or leaking sewer pipes and failing septic systems that leach sewage into the ground. Runoff or contaminated groundwater discharge also carries pathogens and nutrients into surface water, including freshwater and marine coastal areas and beaches.<sup>14, 15, 16, 17, 18, 19, 20, 21</sup>

Water contamination from agricultural activities is related to the release of microbial pathogens or nutrients in livestock manure and inorganic fertilizers that can stimulate rapid and excessive growth or blooms of harmful algae. Agricultural land covers about 900 million acres across the United States,<sup>22</sup> comprising over 2 million farms, with livestock sectors concentrated in certain regions of the United States (Figure 3). Depending on the type and number of animals, a large livestock operation can produce between 2,800 and 1,600,000 tons of manure each year.<sup>23,24</sup> With the projected increases in heavy precipitation for all U.S. regions,<sup>1</sup> agricultural sources of contamination can affect water quality across

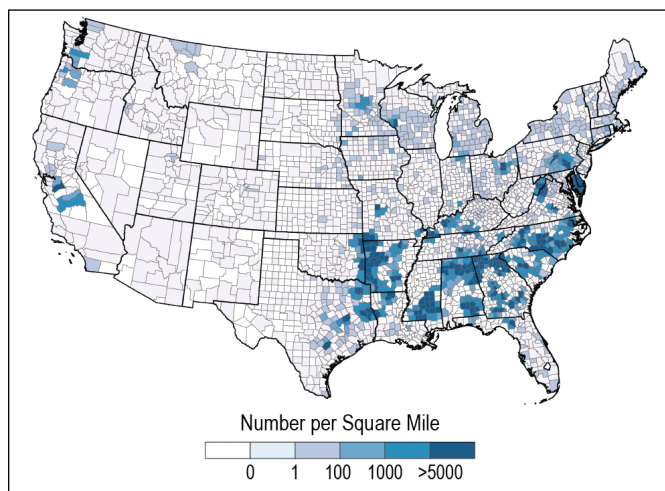
### Links between Climate Change, Water Quantity and Quality, and Human Exposure to Water-Related Illness.



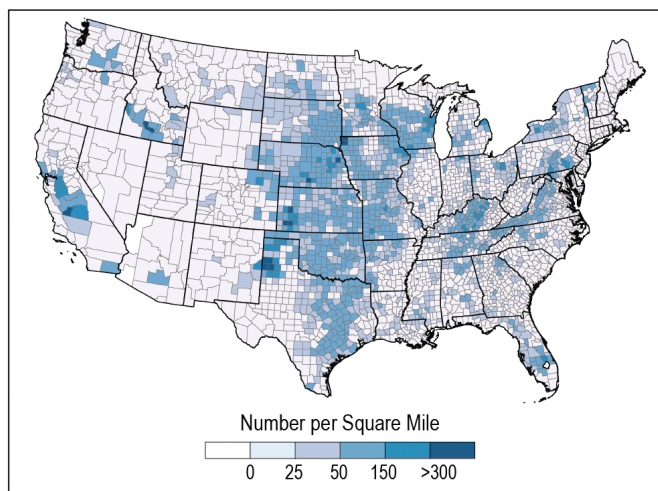
**Figure 2:** Precipitation and temperature changes affect fresh and marine water quantity and quality primarily through urban, rural, and agricultural runoff. This runoff in turn affects human exposure to water-related illnesses primarily through contamination of drinking water, recreational water, and fish and shellfish.

## Locations of Livestock and Projections of Heavy Precipitation

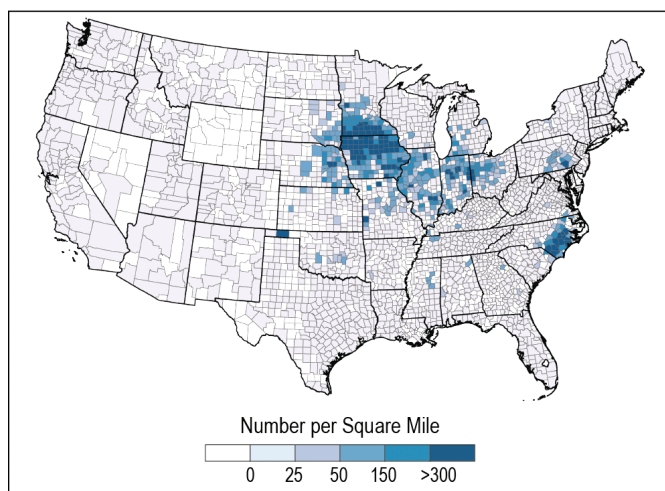
Number of Broilers and Other Meat-Type Chickens per Square Mile, 2012



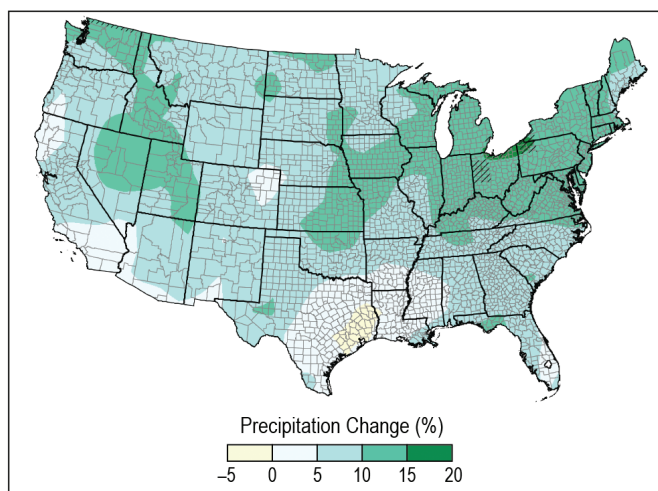
Number of Cattle and Calves per Square Mile, 2012



Number of Hogs and Pigs per Square Mile, 2012



Projected Changes in Heavy Precipitation



**Figure 3:** This figure compares the geographic distribution of chicken, cattle, and hog and pig densities to the projected change in annual maximum 5-day precipitation totals (2046–2065 compared to 1981–2000, multi-model average using RCP8.5) across the continental United States. Increasing frequency and intensity of precipitation and subsequent increases in runoff are key climate factors that increase the potential for pathogens associated with livestock waste to contaminate water bodies. (Figure sources: adapted from USDA 2014 and Sun et al. 2015).<sup>26, 27</sup>

the Nation. Runoff from lands where manure has been used as fertilizer or where flooding has caused wastewater lagoons to overflow can carry contamination agents directly from the land into water bodies.<sup>23, 24, 25</sup>

Management practices and technologies, such as better timing of manure application and improved animal feeds, help reduce or eliminate the risks of manure-borne contaminant transport to public water supplies and shellfish harvesting waters and reduce nutrients that stimulate harmful algal blooms.<sup>23, 25, 28, 29</sup> Drinking water treatment and monitoring practices also help to decrease or eliminate exposure to waterborne illness agents originating from agricultural environments.

Water contamination from wildlife (for example, rodents, birds, deer, and wild pigs) occurs via feces and urine of infected animals, which are reservoirs of enteric and other pathogens.<sup>29, 30, 31</sup> Warmer winters and earlier springs are expected to increase animal activity and alter the ecology and habitat of animals that may carry pathogens.<sup>1</sup> This may lengthen the exposure period for humans and expand the geographic ranges in which pathogens are transmitted.<sup>1, 32</sup>

### 6.3 Exposure Pathways and Health Risks

Humans are exposed to agents of water-related illness through several pathways, including drinking water (treated and untreated), recreational waters (freshwater, coastal, and marine), and fish and shellfish.



## Drinking Water

Although the United States has one of the safest municipal drinking water supplies in the world, water-related outbreaks (more than one illness case linked to the same source) still occur.<sup>33</sup> Public drinking water systems provide treated water to approximately 90% of Americans at their places of residence, work, or schools.<sup>34</sup> However, about 15% of the population relies fully or in part on untreated private wells or other private sources for their drinking water.<sup>35</sup> These private sources are not regulated under the Safe Drinking Water Act.<sup>36</sup> The majority of drinking water outbreaks in the United States are associated with untreated or inadequately treated groundwater and distribution system deficiencies.<sup>33, 37</sup>

## Pathogen and Algal Toxin Contamination

Between 1948 and 1994, 68% of waterborne disease outbreaks in the United States were preceded by extreme precipitation events,<sup>38</sup> and heavy rainfall and flooding continue to be cited as contributing factors in more recent outbreaks in multiple regions of the United States.<sup>39</sup> Extreme precipitation events have been statistically linked to increased levels of pathogens in treated drinking water supplies<sup>40</sup> and to an increased incidence of gastrointestinal illness in children.<sup>21, 41</sup> This established relationship suggests that extreme precipitation is a key climate factor for waterborne disease.<sup>42, 43, 44, 45</sup> The Milwaukee *Cryptosporidium* outbreak in 1993—the largest documented waterborne disease outbreak in U.S. history, causing an estimated 403,000 illnesses and more than 50 deaths<sup>46</sup>—was preceded by the heaviest rainfall event in 50 years in the adjacent watersheds.<sup>10</sup> Various treatment plant operational problems were also key contributing factors.<sup>47</sup> (See future projections in the Case Study on page 164). Observations in England and Wales also show waterborne disease outbreaks were preceded by weeks of low cumulative rainfall and then heavy precipitation events, suggesting that drought or periods of low rainfall may also be important climate-related factors.<sup>48</sup>

Small community or private groundwater wells or other drinking water systems where water is untreated or minimally treated are especially susceptible to contamination following extreme precipitation events.<sup>49</sup> For example, in May 2000, following heavy rains, livestock waste containing *E. coli* O157:H7 and *Campylobacter* was carried in runoff to a well that served as the primary drinking water source for the town of Walkerton, Ontario, Canada, resulting in 2,300 illnesses and 7 deaths.<sup>43, 44, 50</sup> High rainfall amounts were an important catalyst for the outbreak, although non-climate factors, such as well infrastructure, operational and maintenance problems, and lack of communication between public utilities staff and local health officials were also key factors.<sup>44, 51</sup>

Likewise, extreme precipitation events and subsequent increases in runoff are key climate factors that increase nutrient loading in drinking water sources, which in turn increases the likelihood of harmful cyanobacterial blooms that produce algal



Extreme precipitation events have been statistically linked to increased levels of pathogens in treated drinking water supplies.

toxins.<sup>52</sup> The U.S. Environmental Protection Agency has established health advisories for two algal toxins (microcystins and cylindrospermopsin) in drinking water.<sup>53</sup> Lakes and reservoirs that serve as sources of drinking water for between 30 million and 48 million Americans may be periodically contaminated by algal toxins.<sup>54</sup> Certain drinking water treatment processes can remove cyanobacterial toxins; however, efficacy of the treatment processes may vary from 60% to 99.9%. Ineffective treatment could compromise water quality and may lead to severe treatment disruption or treatment plant shutdown.<sup>53, 54, 55, 56</sup> Such an event occurred in Toledo, Ohio, in August 2014, when nearly 500,000 residents of the state's fourth-largest city lost access to their drinking water after tests revealed the presence of toxins from a cyanobacterial bloom in Lake Erie near the water plant's intake.<sup>57</sup>

## Water Supply

Climate-related hydrologic changes such as those related to flooding, drought, runoff, snowpack and snowmelt, and saltwater intrusion (the movement of ocean water into fresh groundwater) have implications for freshwater management and supply (see also Ch. 4: Extreme Events).<sup>58</sup> Adequate freshwater supply is essential to many aspects of public health, including provision of drinking water and proper sanitation and personal hygiene. For example, following floods or storms, short-term loss of access to potable water has been linked to increased incidence of illnesses including gastroenteritis and respiratory tract and skin infections.<sup>59</sup> Changes in precipitation and runoff, combined with changes in consumption and withdrawal, have reduced surface and groundwater supplies in many areas, primarily in the western United States.<sup>58</sup> These trends are expected to continue under future climate change, increasing the likelihood of water shortages for many uses.<sup>58</sup>

Future climate-related water shortages may result in more municipalities and individuals relying on alternative sources for drinking water, including reclaimed water and roof-harvested rainwater.<sup>60, 61, 62, 63</sup> Water reclamation refers to the treatment of stormwater, industrial wastewater, and municipal wastewater

for beneficial reuse.<sup>64</sup> States like California, Arizona, New Mexico, Texas, and Florida are already implementing wastewater reclamation and reuse practices as a means of conserving and adding to freshwater supplies.<sup>65</sup> However, no federal regulations or criteria for public health protection have been developed or proposed specifically for potable water reuse in the United States.<sup>66</sup> Increasing household rainwater collection has also been seen in some areas of the country (primarily Arizona, Colorado, and Texas), although in some cases, exposure to untreated rainwater has been found to pose health risks from bacterial or protozoan pathogens, such as *Salmonella enterica* and *Giardia lamblia*.<sup>67, 68, 69</sup>

### Projected Changes

Runoff from more frequent and intense extreme precipitation events will contribute to contamination of drinking water sources with pathogens and algal toxins and place additional stresses on the capacity of drinking water treatment facilities and distribution systems.<sup>10, 52, 59, 70, 71, 72, 73</sup> Contamination of drinking water sources may be exacerbated or insufficiently addressed by treatment processes at the treatment plant or by breaches in the distribution system, such as during water main breaks or low-pressure events.<sup>13</sup> Untreated groundwater drawn from municipal and private wells is of particular concern.

Climate change is not expected to substantially increase the risk of contracting illness from drinking water for those people who are served by treated drinking water systems, if appropriate treatment and distribution is maintained. However, projections

#### Case Study: Modeling Future Extreme Precipitation and Combined Sewer Overflows in Great Lakes Urban Coastal Areas

The Great Lakes contain 20% of the Earth's surface freshwater and provide drinking water to 40 million people. Milwaukee, WI, is typical of urban areas in the Great Lakes in that it has a combined sewer system that overflows during moderate or heavy rainfall. In 1994, unrelated to but shortly after the 1993 *Cryptosporidium* outbreak, the city completed a project to increase sewer capacity; reducing combined sewage overflows from 50 to 60 per year, to 2 to 3 per year.<sup>10</sup>

In order to assess how changing rainfall patterns might affect sewer capacity in the future, Milwaukee was one of the first cities to integrate regional climate projections into its detailed engineering models. Under a future climate scenario (for 2050) that had one of the largest projected increases in spring rain, a 37% increase in the number of combined sewage overflows in spring was projected, resulting in an overall 20% increase from the baseline in the volume of discharge each year.<sup>76</sup>

of more frequent or severe extreme precipitation events, flooding, and storm surge suggest that drinking water infrastructure may be at greater risk of disruption or failure due to damage or exceedance of system capacity.<sup>6, 58, 70, 74, 75</sup> Aging drinking water infrastructure is one longstanding limitation in controlling waterborne disease, and may be especially susceptible to failure.<sup>6, 13, 74</sup> For example, there are more than 50,000 systems providing treated drinking water to communities in the United States, and most water distribution pipes in these systems are already failing or will reach their expected lifespan and require replacement within 30 years.<sup>6</sup> Breakdowns in drinking water treatment and distribution systems, compounded by aging infrastructure, could lead to more serious and frequent health consequences than those we experience now.

### Recreational Waters

Humans are exposed to agents of water-related illness through recreation (such as swimming, fishing, and boating) in freshwater and marine or coastal waters. Exposure may occur directly (ingestion and contact with water) or incidentally (inhalation of aerosolized water droplets).

### Pathogen and Algal Toxin Contamination

Enteric viruses, especially noroviruses, from human waste are a primary cause of gastrointestinal illness from exposure to contaminated recreational fresh and marine water (Table 1).<sup>77</sup> Although there are comparatively few reported illnesses and outbreaks of gastrointestinal illness from recreating in marine waters compared to freshwater, marine contamination still presents a significant health risk.<sup>39, 78, 79, 80, 81</sup> Illnesses from marine sources are less likely to be reported than those from freshwater beaches in part because the geographical residences of beachgoers are more widely distributed (for example, tourists may travel to marine beaches for vacation) and illnesses are less often attributed to marine exposure as a common source.<sup>39, 77</sup>

Key climate factors associated with risks of exposure to enteric pathogens in both freshwater and marine recreational waters include extreme precipitation events, flooding, and temperature. For example, *Salmonella* and *Campylobacter* concentrations in freshwater streams in the southeastern United States increase significantly in the summer months and following heavy rainfall.<sup>82, 83, 84</sup> In the Great Lakes—a freshwater system—changes in rainfall, higher lake temperatures, and low lake levels have been linked to increases in fecal bacteria levels.<sup>10</sup> The zoonotic bacteria *Leptospira* are introduced into water from the urine of animals,<sup>85, 86</sup> and increased illness rates in humans are linked to warm temperatures and flooding events.<sup>87, 88, 89, 90, 91</sup>

In marine waters, recreational exposure to naturally occurring bacterial pathogens (such as *Vibrio* species) may result in eye, ear, and wound infections, diarrheal illness, or death (Table 1).<sup>92, 93, 94</sup> Reported rates of illness for all *Vibrio* infections have tripled since 1996, with *V. alginolyticus* infections having increased by 40-fold.<sup>92</sup> *Vibrio* growth rates are highly responsive to rising sea



surface temperatures, particularly in coastal waters, which generally have high levels of the dissolved organic carbon required for *Vibrio* growth. The distribution of species changes with salinity patterns related to sea level rise and to changes in delivery of freshwater to coastal waters, which is affected by flooding and drought. For instance, *V. parahaemolyticus* and *V. alginolyticus* favor higher salinities while *V. vulnificus* favors more moderate salinities.<sup>95, 96, 97, 98, 99, 100</sup>

Harmful algal blooms caused by cyanobacteria were responsible for nearly half of all reported outbreaks in untreated recreational freshwater in 2009 and 2010, resulting in approximately 61 illnesses (health effects included dermatologic, gastrointestinal, respiratory, and neurologic symptoms), primarily reported in children/young adults age 1–19.<sup>101</sup> Cyanobacterial blooms are strongly influenced by rising temperatures, altered precipitation patterns, and changes in freshwater discharge or flushing rates of water bodies (Table 1).<sup>102, 103, 104, 105, 106, 107, 108</sup> Higher temperatures (77°F and greater) favor surface-bloom-forming cyanobacteria over less harmful types of algae.<sup>109</sup> In marine water, the toxins associated with harmful “red tide” blooms of *Karenia brevis* can aerosolize in water droplets through wind and wave action and cause acute respiratory illness and eye irritation in recreational beachgoers.<sup>110, 111</sup> People with preexisting respiratory diseases, specifically asthma, are at increased risk of illness.<sup>112, 113</sup> Prevailing winds and storms are important climate factors influencing the accumulation of *K. brevis* cells in the water.<sup>78, 114</sup> For example, in 1996, Tropical Storm Josephine transported a Florida panhandle bloom as far west as Louisiana,<sup>115</sup> the first documented occurrence of *K. brevis* in that state.

### Projected Changes

Overall, climate change will contribute to contamination of recreational waters and increased exposure to agents of water-related illness.<sup>10, 82, 116, 117, 118, 119, 120</sup> Increases in flooding, coastal inundation, and nuisance flooding (linked to sea level rise and storm surge from changing patterns of coastal storms and hurricanes) will negatively affect coastal infrastructure and increase chances for pathogen contamination, especially in populated areas (see also Ch. 4: Extreme Events).<sup>70, 121</sup> In areas



In areas where increasing temperatures lengthen recreational swimming seasons, exposure risks are expected to increase.

where increasing temperatures lengthen the seasons for recreational swimming and other water activities, exposure risks are expected to increase.<sup>122, 123</sup>

As average temperatures rise, the seasonal and geographic range of suitable habitat for cyanobacterial species is projected to expand.<sup>124, 125, 126, 127, 128</sup> For example, tropical and subtropical species like *Cylindrospermopsis raciborskii*, *Anabaena* spp., and *Aphanizomenon* spp. have already shown poleward expansion into mid-latitudes of Europe, North America, and South America.<sup>107, 129, 130</sup> Increasing variability in precipitation patterns and more frequent and intense extreme precipitation events (which will increase nutrient loading) will also affect cyanobacterial communities. If such events are followed by extended drought periods, the stagnant, low-flow conditions accompanying droughts will favor cyanobacterial dominance and bloom formation.<sup>103, 131</sup>

In recreational waters, projected increases in sea surface temperatures are expected to lengthen the seasonal window of growth and expand geographic range of *Vibrio* species,<sup>96, 132</sup> although the certainty of regional projections is affected by underlying model structure.<sup>133</sup> While the specific response of *Vibrio* and degree of growth may vary by species and locale, in general, longer seasons and expansion of *Vibrio* into areas where it had not previously been will increase the likelihood of exposure to *Vibrio* in recreational waters. Regional climate changes that affect coastal salinity (such as flooding, drought, and sea level rise) can also affect the population dynamics of these agents,<sup>97, 99, 134</sup> with implications for human exposure risk. Increases in hurricane intensity and rainfall are projected as the climate continues to warm (see Ch 4: Extreme Events). Such increases may redistribute toxic blooms of *K. brevis* (“red tide” blooms) into new geographic locations, which would change human exposure risk in newly affected areas.

### Fish and Shellfish

Water-related contaminants as well as naturally occurring harmful bacteria and algae can be accumulated by fish or shellfish, providing a route of human exposure through consumption (see also Ch. 7: Food Safety).<sup>135, 136, 137</sup> Shellfish, including oysters, are often consumed raw or very lightly cooked, which increases the potential for ingestion of an infectious pathogen.<sup>138</sup>

### Pathogens Associated with Fish and Shellfish

Enteric viruses (for example, noroviruses and hepatitis A virus) found in sewage are the primary causes of gastrointestinal illness due to shellfish consumption.<sup>139, 140</sup> Rainfall increases the load of contaminants associated with sewage delivered to shellfish harvesting waters and may also temporarily reduce salinity, which can increase persistence of many enteric bacteria and viruses.<sup>141, 142, 143, 144</sup> Many enteric viruses also exhibit

seasonal patterns in infection rates and detection rates in the environment, which may be related to temperature.<sup>145, 146, 147</sup>

Among naturally occurring water-related pathogens, *Vibrio vulnificus* and *V. parahaemolyticus* are the species most often implicated in foodborne illness in the United States, accounting for more than 50% of reported shellfish-related illnesses annually.<sup>140, 148, 149, 150, 151</sup> Cases have increased significantly since 1996.<sup>92, 148</sup> Rising sea surface temperatures have contributed to an expanded geographic and seasonal range in outbreaks associated with shellfish.<sup>96, 152, 153, 154, 155</sup>

Precipitation is expected to be the primary climate driver affecting enteric pathogen loading to shellfish harvesting areas, although temperature also affects bioaccumulation rates of enteric viruses in shellfish. There are currently no national projections for the associated risk of illness from shellfish consumption. Many local and state agencies have developed plans for closing shellfish beds in the event of threshold-exceeding rain events that lead to loading of these contaminants and deterioration of water quality.<sup>156</sup>

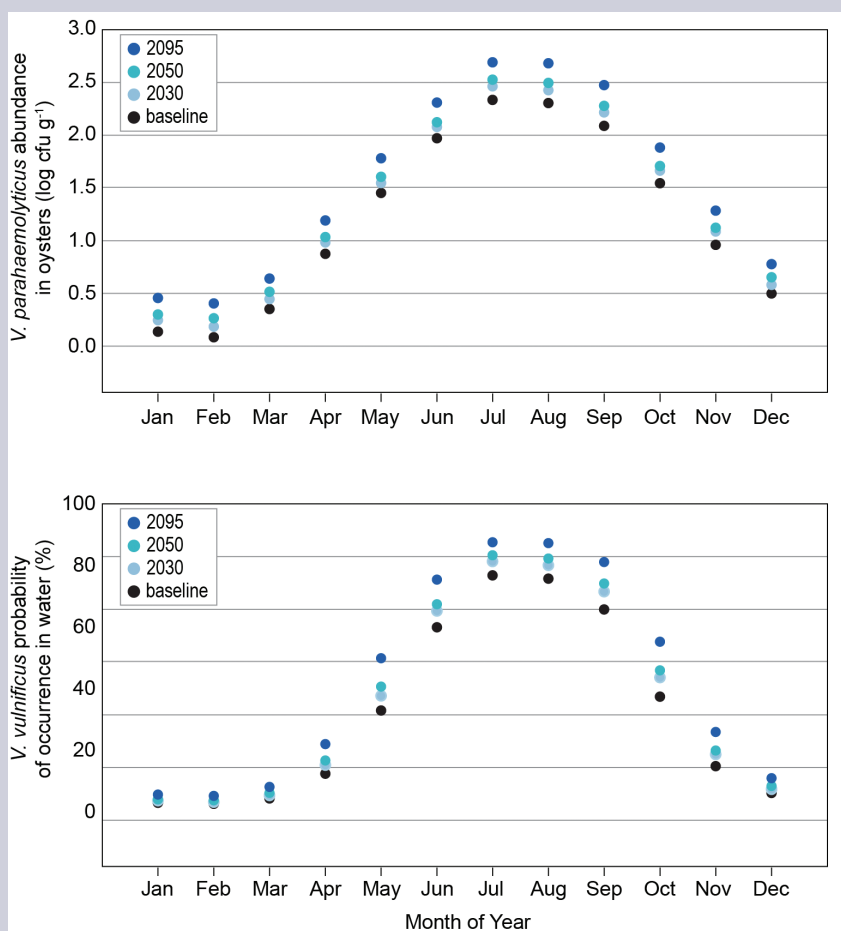
### Research Highlight: The Effect of Warming on Seasonal *Vibrio* Abundance and Distribution

**Importance:** *Vibrio* species are naturally occurring pathogens in coastal environments that cause illnesses ranging from gastroenteritis to septicemia (bloodstream infection) and death from both water contact and ingestion of raw or undercooked seafood, especially shellfish.<sup>93</sup> *Vibrio* are highly responsive to environmental conditions. For example, local nutrient availability can affect *Vibrio* abundance, though coastal waters generally have sufficient levels of the dissolved organic carbon required for *Vibrio* growth.<sup>159</sup>

Over longer timescales and larger geographic areas, key climate-related factors that increase *Vibrio* growth and abundance include rising sea surface temperatures and changes in precipitation, freshwater runoff, drought, sea level rise, coastal flooding, and storm surge, with resulting changes to coastal salinity patterns, turbidity (water clarity), and plankton abundance and composition (see Figure 1).<sup>95, 96, 97, 98, 99, 100, 134, 160, 161, 162, 163</sup>

Water temperature is a major contributor to *Vibrio* growth potential and, in turn, human exposure risk. The minimum water temperature threshold for the growth of most *Vibrio* species that cause illness in humans is 15°C (59°F), with growth rates increasing as temperature increases.<sup>132, 152, 154, 157</sup> Thus, it is projected that global ocean warming will increase risk of exposure by extending seasonal windows of growth and geographical range of occurrence.<sup>132</sup>

#### Projections of *Vibrio* Occurrence and Abundance in Chesapeake Bay



**Figure 4:** Seasonal and decadal projections of abundance of *V. parahaemolyticus* in oysters of Chesapeake Bay (top) and probability of occurrence of *V. vulnificus* in Chesapeake Bay surface waters (bottom). The circles show average values in the baseline period (1985–2000) and future years averaged by decadal period: 2030 (2025–2034), 2050 (2045–2054), and 2095 (2090–2099). (Figure source: adapted from Jacobs et al. 2015).<sup>132</sup>

## Research Highlight: The Effect of Warming on Seasonal *Vibrio* Abundance and Distribution, continued

**Objective:** A quantitative projection of future shifts in *Vibrio* seasonal abundance and geographic range.

**Method:** Monthly average sea surface temperatures were projected for the 2030s, 2050s, and 2090s based on statistical downscaling of up to 21 global climate models for the Chesapeake Bay and Alaskan coastline. Previously published empirical models relating sea surface temperature and salinity to *Vibrio vulnificus* and *V. parahaemolyticus* were used to project probability of occurrence and abundance in Chesapeake Bay waters and oysters. Geographic information system (GIS) mapping of Alaskan coastal waters was used to project the distribution of monthly average water temperatures exceeding 15°C (59°F), considered to be the minimum temperature favorable for growth.<sup>132</sup>

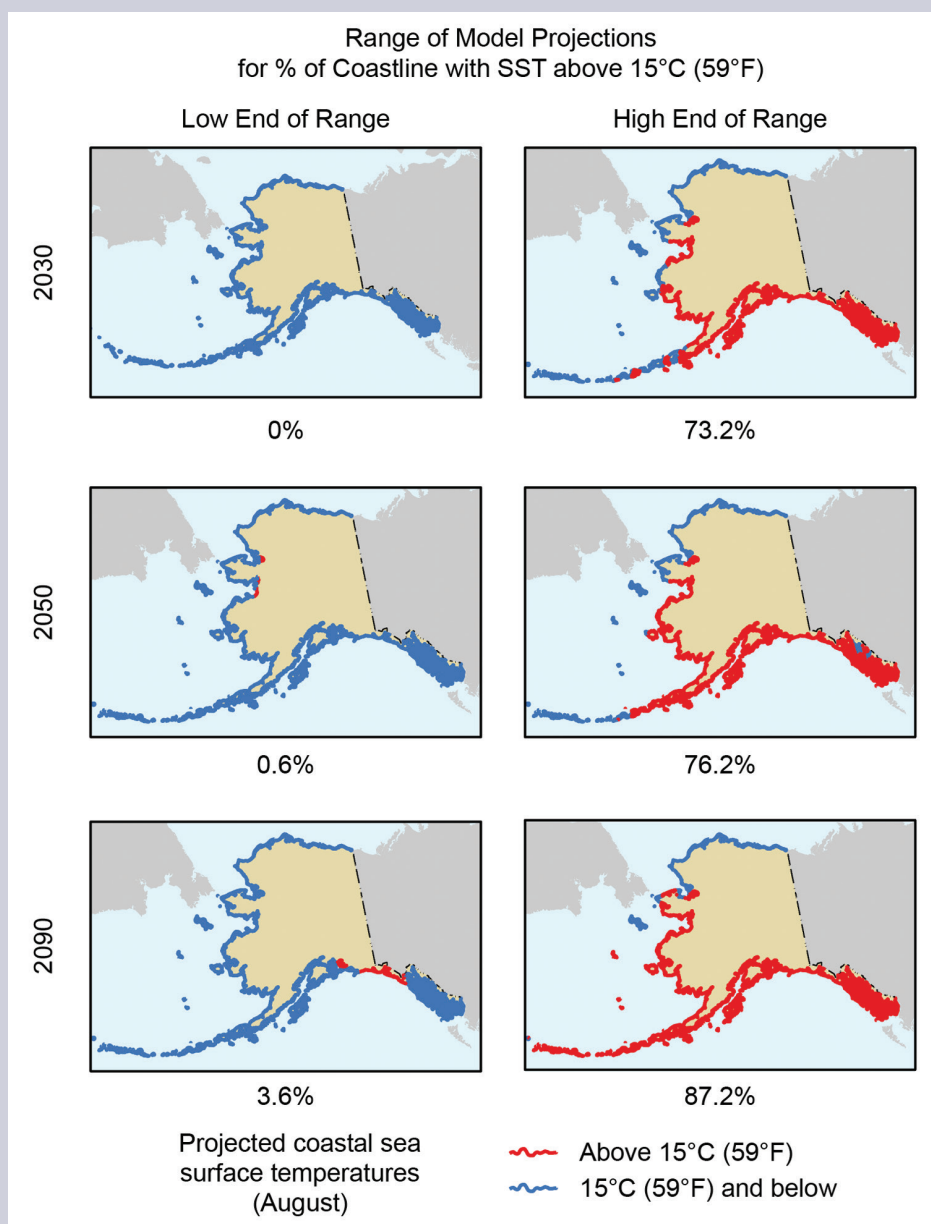
### Results and Conclusions:

Modeling results find increases in abundance, geographical range, and seasonal extent of available habitat for *Vibrio*. In the Chesapeake Bay, the probability of occurrence of *V. vulnificus* is projected to increase by nearly 16% in the shoulder months of the growing season (May and September), with a similar increase in abundance of *V. parahaemolyticus* in oysters (Figure 4).

Analysis of temperature projections for Alaskan coastal waters based on an average of four climate models showed that habitat availability for *Vibrio* growth will increase to nearly 60% of the Alaskan shoreline in August by the 2090s (Figure 5).

Sources of uncertainty include different rates of warming associated with each model ensemble and other factors that affect growth and abundance, but all models used in this study project warming of coastal waters.

### Changes in Suitable Coastal *Vibrio* Habitat in Alaska



**Figure 5:** *Vibrio* growth increases in temperatures above 15°C (59°F). These maps show the low and high end of the ranges for projected area of Alaskan coastline with water temperature averages in August that are greater than this threshold. The projections were made for the following future time periods: 2030 (2026–2035), 2050 (2046–2055), and 2090 (2086–2095). On average, the models project that by 2090, nearly 60% of the Alaskan shoreline in August will become suitable *Vibrio* habitat. (Figure source: adapted from Jacobs et al. 2015)<sup>132</sup>

Increases in sea surface temperatures, changes in precipitation and freshwater delivery to coastal waters, and sea level rise will continue to affect *Vibrio* growth and are expected to increase human exposure risk.<sup>96, 134, 152, 157</sup> Regional models project increased abundance and extended seasonal windows of growth of *Vibrio* pathogens (see Research Highlight on page 166).<sup>132</sup> The magnitude of health impacts depends on the use of intervention strategies and on public and physician awareness.<sup>158</sup>

### Harmful Algal Toxins

Harmful algal blooms (HABs) that contaminate seafood with toxins are becoming increasingly frequent and persistent in coastal marine waters, and some have expanded into new geographic locations.<sup>164, 165, 166, 167, 168</sup> Attribution of this trend has been complicated for some species, with evidence to suggest that human-induced changes (such as ballast water exchange, aquaculture, nutrient loading to coastal waters, and climate change) have contributed to this expansion.<sup>167, 169</sup>

Among HABs associated with seafood, ciguatera fish poisoning (CFP) is most strongly influenced by climate.<sup>170, 171, 172</sup> CFP is caused by toxins produced by the benthic algae *Gambierdiscus* (Table 1) and is the most frequently reported fish poisoning in humans.<sup>173</sup> There is a well-established link between warm sea surface temperatures and increased occurrences of CFP,<sup>170, 171, 172</sup> and in some cases, increases have also been linked to El Niño–Southern Oscillation events.<sup>174</sup> The frequency of tropical cyclones in the United States has also been associated with CFP, but with an 18-month lag period associated with the time required for a new *Gambierdiscus* habitat to develop.<sup>170, 171</sup>

Paralytic shellfish poisoning (PSP) is the most globally widespread shellfish poisoning associated with algal toxins,<sup>175</sup> and records of PSP toxins in shellfish tissues (an indicator of toxin-producing species of *Alexandrium*) provide the longest time series in the United States for evaluating climate impacts. Warm phases of the naturally occurring climate pattern known as the Pacific Decadal Oscillation co-occur with increased PSP toxins in Puget Sound shellfish on decadal timescales.<sup>176</sup> Further, it is very likely that the 20th century warming trend also contributed to the observed increase in shellfish toxicity since the 1950s.<sup>177, 178</sup> Warm spring temperatures also contributed to a bloom of *Alexandrium* in a coastal New York estuary in 2008.<sup>179</sup> Decadal patterns in PSP toxins in Gulf of Maine shellfish show no clear relationships with long-term trends in climate,<sup>180, 181, 182</sup> but ocean–climate interactions and changing oceanographic conditions are important factors for understanding *Alexandrium* bloom dynamics in this region.<sup>183</sup>

There is less agreement on the extent of climate impacts on other marine HAB-related diseases in the United States.

Increased abundances of *Pseudo-nitzschia* species, which can cause amnesic shellfish poisoning, have been attributed to nutrient enrichment in the Gulf of Mexico.<sup>184</sup> On the U.S. West Coast, increased abundances of at least some species of *Pseudo-nitzschia* occur during warm phases associated with El Niño events.<sup>185</sup> For *Dinophysis* species that can cause diarrhetic shellfish poisoning, data records are too short to evaluate potential relationships with climate in the United States,<sup>164, 186</sup> but studies in Sweden have found relationships with natural climate oscillations.<sup>187</sup>

The projected impacts of climate change on toxic marine harmful algae include geographic range changes in both warm- and cold-water species, changes in abundance and toxicity, and changes in the timing of the seasonal window of growth.<sup>188, 189, 190, 191</sup> These impacts will likely result from climate change related impacts on one or more of 1) water

temperatures, 2) salinities, 3) enhanced surface stratification, 4) nutrient availability and supply to coastal waters (upwelling and freshwater runoff), and 5) altered winds and ocean currents.<sup>188, 190, 191, 192, 193</sup>

---

*Climate change, especially continued warming, will dramatically increase the burden of some marine HAB-related diseases in some parts of the United States*

---

Limited understanding of the interactions among climate and non-climate stressors and, in some cases, limitations in the design of experiments for investigating decadal- or century-scale trends in phytoplankton communities, makes forecasting the direction and magnitude of change in toxic marine HABs challenging.<sup>189, 191</sup> Still, changes to the community composition of marine microalgae, including harmful species, will occur.<sup>188, 194</sup> Conditions for the growth of dinoflagellates—the algal group containing numerous toxic species—could potentially be increasingly favorable with climate change because these species possess certain physiological characteristics that allow them to take advantage of climatically-driven changes in the structure of the ocean (for example, stronger vertical stratification and reduced turbulence).<sup>190, 193, 195, 196, 197</sup>

Climate change, especially continued warming, will dramatically increase the burden of some marine HAB-related diseases in some parts of the United States, with strong implications for disease surveillance and public health preparedness. For example, the projected 4.5°F to 6.3°F increase in sea surface temperature in the Caribbean over the coming century is expected to increase the incidence of ciguatera fish poisoning by 200% to 400%.<sup>171</sup> In Puget Sound, warming is projected to increase the seasonal window of growth for *Alexandrium* by approximately 30 days by 2040, allowing blooms to begin earlier in the year and persist for longer.<sup>177, 190, 198</sup>



## Research Highlight: Increased Risk of Ciguatera Fish Poisoning (CFP)

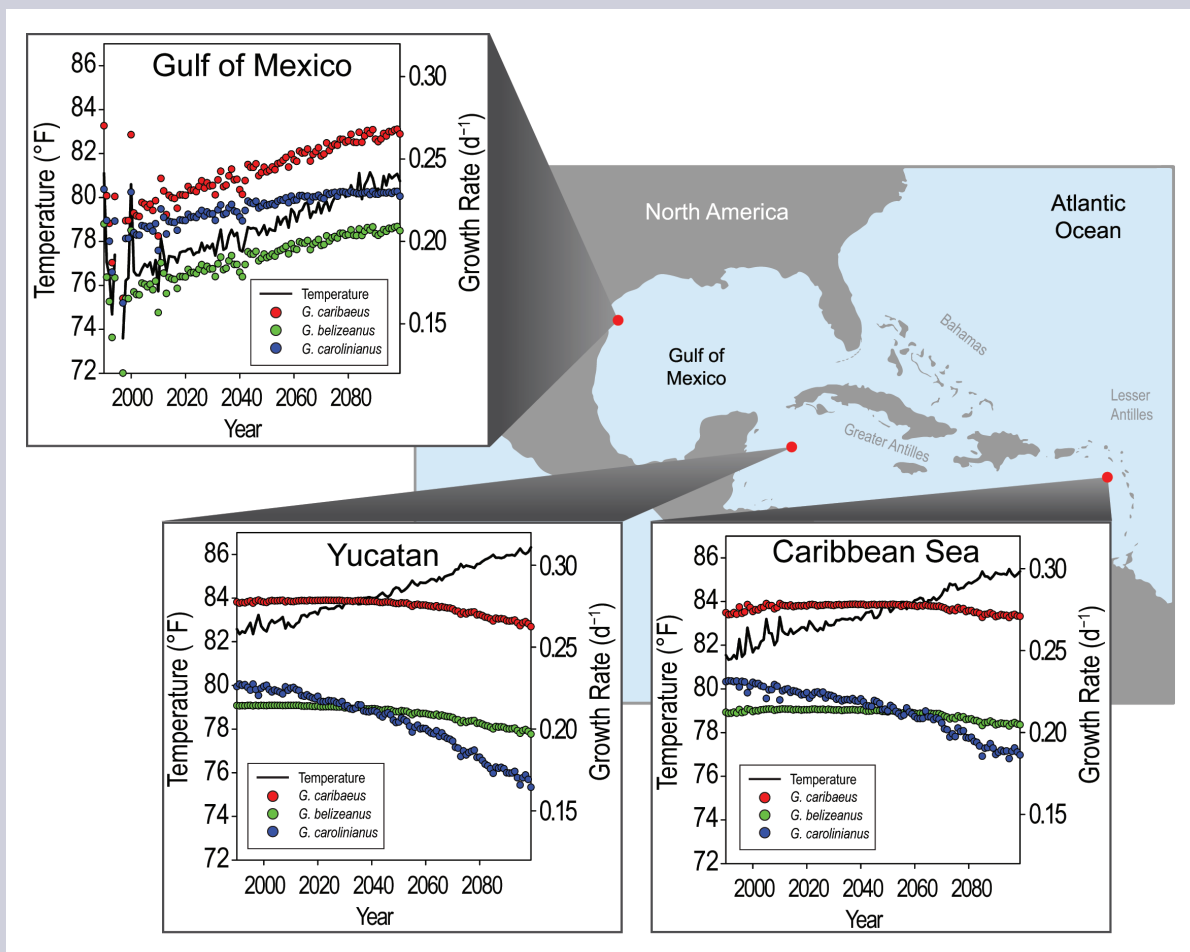
**Importance:** Ciguatera fish poisoning is caused by consumption of fish contaminated with toxins produced by dinoflagellates, such as those of the genus *Gambierdiscus*. There is a well-established link between warm sea surface temperatures and increased occurrence of CFP,<sup>171</sup> and thus concern that global ocean warming will affect the risk of illness.

**Objective:** A quantitative projection of future shifts in species of *Gambierdiscus*.

**Method:** Growth models developed for three Caribbean species of *Gambierdiscus* were run using 11 global climate model projections for specific buoy locations in the western Gulf of Mexico, Yucatan channel, and eastern Caribbean Sea through 2099. For further detail, see Kibler et al. 2015.<sup>199</sup>

**Results and Conclusions:** Modeling results suggest substantial changes in dominant species composition (Figure 6). Lower thermal tolerances of some species may result in geographic range shifts to more northern latitudes, particularly from the Yucatan and eastern Caribbean Sea. The projected shift in distribution is likely to mean that dominant CFP toxins enter the marine food web through different species, with increases of toxins in new areas where waters are warming and potential decreases in existing areas where waters are warming less rapidly.

### Projected Changes in Caribbean *Gambierdiscus* Species



**Figure 6:** Water temperature data from 1990–2013 were collected or reconstructed for buoy sites in the western Gulf of Mexico, Yucatan channel, and eastern Caribbean Sea. These data were then used in calculations to project average annual water temperature and average growth rates for three Caribbean *Gambierdiscus* species (*G. caribaeus*, *G. belizeanus*, *G. carolinianus*) for the period 2014–2099. (Figure source: adapted from Kibler et al. 2015).<sup>199</sup>

## Research Highlight: Expanded Seasonal Windows for Harmful Algal Blooms

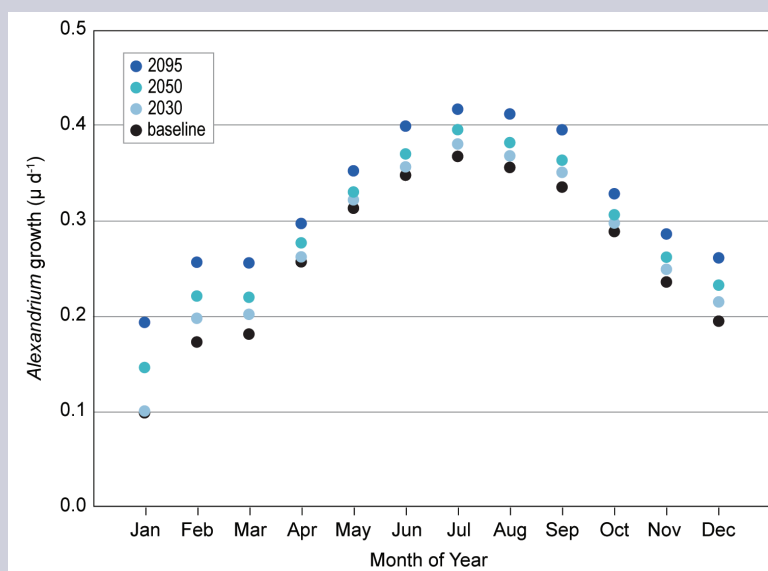
**Importance:** When some harmful algae in the genus *Alexandrium* bloom, toxins that can accumulate in shellfish are produced. When these shellfish are consumed, gastrointestinal illness and neurological symptoms, known as paralytic shellfish poisoning (PSP), can occur. Death can result in extreme cases. Because growth of *Alexandrium* is regulated in part by water temperature, warm water conditions appropriate for bloom formation may expand seasonally, increasing the risk of illness.

**Objective:** A quantitative projection of future conditions appropriate for *Alexandrium* bloom formation in Puget Sound.

**Method:** Monthly average sea surface temperature was projected for Quatermaster Harbor, Puget Sound, for the 2030s, 2050s, and 2090s based on statistical downscaling of 21 global climate models. The projections were applied to previously published empirical models relating temperature and salinity to *Alexandrium* growth. For more detail, see Jacobs et al. 2015.<sup>132</sup>

**Results and Conclusions:** Modeling results indicate that *Alexandrium* blooms could develop up to two months earlier in the year and persist for up to two months longer by 2100 compared to the present day (Figure 7). All model projections indicate that the bloom season will expand by at least one month on either side of the present-day bloom season by 2100. Therefore, it is likely that the risk of *Alexandrium* blooms that can contaminate shellfish with potent toxins will increase. This may increase the risk of human exposure to the toxins, which can cause paralytic shellfish poisoning. Sources of uncertainty include different rates of warming associated with each model ensemble and other factors that affect growth and abundance, but all models used project warming of coastal waters.

### Projections of Growth of *Alexandrium* in Puget Sound



**Figure 7:** Seasonal and decadal projections of growth of *Alexandrium* in Puget Sound. The circles show average values in the baseline period (2006–2013) and future years averaged by decadal period: 2030 (2025–2035), 2050 (2045–2055), and 2095 (2090–2099). Growth rate values above  $0.25\mu\text{d}^{-1}$  constitute a bloom of *Alexandrium* (Figure source: adapted from Jacobs et al. 2015)<sup>132</sup>

## 6.4 Populations of Concern

Climate change impacts on the drinking water exposure pathway (see page 163) will act as an additional stressor on top of existing exposure disparities in the United States. Lack of consistent access to potable drinking water and inequities in exposure to contaminated water disproportionately affects the following populations: tribes and Alaska Natives, especially those in remote reservations or villages; residents of low-income rural subdivisions known as colonias along the U.S.–Mexico border; migrant farm workers; the homeless; and low-income communities not served by public water utilities—which can be urban, suburban, or rural, and some of which are predominately Hispanic or Latino and Black or African American communities in certain regions of the country.<sup>200, 201, 202, 203, 204, 205, 206, 207, 208</sup> In general, the heightened vulnerability of these populations primarily results from unequal access to adequate water and sewer

infrastructure, and various environmental, political, economic, and social factors jointly create these disparities.<sup>201</sup>

Children, older adults (primarily age 65 and older), pregnant women, and immunocompromised individuals have higher risk of gastrointestinal illness and severe health outcomes from contact with contaminated water.<sup>4, 209, 210, 211, 212, 213</sup> Pregnant women who develop severe gastrointestinal illness are at high risk for adverse pregnancy outcomes (pregnancy loss and preterm birth).<sup>214</sup> Because children swallow roughly twice as much water as adults while swimming, they have higher recreational exposure risk for both pathogens and freshwater HABs.<sup>101, 120</sup> Recent cryptosporidiosis and giardiasis cases have frequently been reported in children aged one to nine years, with onset of illness peaking during the summer months.<sup>215</sup> In addition, 40%

of swimming-related eye and ear infections from *Vibrio alginolyticus* during the period 1997–2006 were reported in children (median age of 15).<sup>93</sup>

Traditional tribal consumption of fish and shellfish in the Pacific Northwest and Alaska can be on average 3 to 10 times higher than that of average U.S. consumers, or even up to 20 times higher.<sup>216</sup> Climate change will contribute to increased seafood contamination by toxins and potentially by chemical contaminants (see "6.5 Emerging Issues" below), with potential health risks and cultural implications for tribal communities. Those who continue to consume traditional diets may face increased health risks from contamination.<sup>217</sup> Alternatively, replacing these traditional nutrition sources may involve consuming less nutritious processed foods and the loss of cultural practices tied to fish and shellfish harvest.<sup>218, 219</sup>

## 6.5 Emerging Issues

A key emerging issue is the impact of climate on new and re-emerging pathogens. While cases of nearly-always-fatal primary amoebic meningoencephalitis due to the amoeba *Naegleria fowleri* and other related species remain relatively uncommon, a northward expansion of cases has been observed in the last five years.<sup>220, 221</sup> Evidence suggests that in addition to detection in source water (ground and surface waters), these amoebae may be harbored in biofilms associated with water distribution systems, where increased temperatures decrease efficacy of chlorine disinfection and support survival and potentially growth.<sup>222, 223, 224</sup>

Climate change may also alter the patterns or magnitude of chemical contamination of seafood, leading to altered effects on human health—most of which are chronic conditions. Rising temperatures and reduced ice cover are already linked to increasing burdens of mercury and organohalogens in arctic fish,<sup>225</sup> a sign of increasing contamination of the arctic food chain. Changes in hydrology resulting from climate change are expected to alter releases of chemical contaminants into the Nation's surface waters,<sup>226</sup> with as-yet-unknown effects on seafood contamination.

## 6.6 Research Needs

In addition to those identified in the emerging issues discussion above, the authors highlight the following potential areas for additional scientific and research activity on water-related illness, based on their review of the literature. Enhanced understanding of climate change impacts will be facilitated by improved public health surveillance for water-related infectious diseases and expanded monitoring and surveillance of surface and coastal water quality. In addition, improved understanding of how human behaviors affect the risk of waterborne diseases can facilitate the development of predictive models and effective adaptation measures. Predictive models can also help identify major areas of uncertainty and refine key research questions.



Water-related contamination of shellfish may reduce consumption and contribute to loss of tribal cultural practices tied to shellfish harvest.

Future assessments can benefit from research activities that

- assess the interactions among climate drivers, ecosystem changes, water quality and infectious pathogens, including *Vibrio spp.*, *N. fowleri*, chemical contaminants, and harmful algal blooms;
- increase understanding of how marine and terrestrial wildlife, including waterfowl, contribute to the distribution of pathogens and transmission of infectious disease and assess the role of climate;
- explore how ocean acidification affects toxin production and distribution of marine HABs and pathogens;
- analyze the hydrologic (discharge, flow-residence time, and mixing) thresholds for predicting HAB occurrences; and
- increase understanding of how the impacts of climate change on drinking water infrastructure, including the need for development of new and emerging technologies for provision of drinking water, affect the risks of waterborne diseases.

# Supporting Evidence

## PROCESS FOR DEVELOPING CHAPTER

The chapter was developed through technical discussions of relevant evidence and expert deliberation by the report authors at several workshops, teleconferences, and email exchanges. Authors considered inputs and comments submitted by the public, the National Academies of Sciences, and Federal agencies. For additional information on the overall report process, see Appendices 2 and 3.

Many water-related illnesses are of critical importance globally, such as cholera and hepatitis E virus, and they affect U.S. interests abroad, but the focus of this chapter is to address climate impacts on water-related illnesses of primary importance to human health within the United States. In addition, although climate change has the potential to impact national as well as global seafood supplies, this chapter does not cover these types of impacts because the peer-reviewed literature is not yet robust enough to make connections to human health outcomes in the United States. Even with those constraints, the impacts of climate on water-related illness are regionally or locally specific and may include increased risks as well as benefits. For example, the projected geographic range shifts of some *Gambierdiscus* species to more northern latitudes may mean that dominant ciguatera fish poisoning toxins enter the marine food web through different species, with increases of toxins in new areas where waters are warming and potential decreases in areas such as the Yucatan and eastern Caribbean Sea.<sup>199</sup>

## KEY FINDING TRACEABLE ACCOUNTS

### Seasonal and Geographic Changes in Waterborne Illness Risk

**Key Finding 1:** Increases in water temperatures associated with climate change will alter the seasonal windows of growth and the geographic range of suitable habitat for freshwater toxin-producing harmful algae [*Very Likely, High Confidence*], certain naturally occurring *Vibrio* bacteria [*Very Likely, Medium Confidence*], and marine toxin-producing harmful algae [*Likely, Medium Confidence*]. These changes will increase the risk of exposure to waterborne pathogens and algal toxins that can cause a variety of illnesses [*Medium Confidence*].

#### Description of evidence base

*Vibrio*, a genus of naturally occurring waterborne pathogens, thrives in water temperatures above a 15°C/59°F threshold.<sup>132, 152, 154, 157</sup> Rising sea surface temperatures have contributed to an expanded geographic and seasonal range in outbreaks of human illness associated with *Vibrio* in shellfish.<sup>96, 152, 153, 154, 155</sup> In recreational waters, projected increases in sea surface temperatures are expected to lengthen the seasonal window of growth and expand geographic range of *Vibrio*.<sup>96, 132</sup> Like

other heterotrophic bacteria, growth of *Vibrio* is ultimately limited by availability of carbon substrate, though the coastal areas where *Vibrio* exposure is most likely, either through recreation or consumption of shellfish, generally have sufficient dissolved organic carbon.<sup>159</sup> Reported rates of all *Vibrio* infections have tripled since 1996 in the United States, with *V. alginolyticus* infections having increased by 40-fold.<sup>92</sup> Increasing sea surface temperatures, changes in precipitation and freshwater delivery to coastal waters, and sea level rise will continue to affect *Vibrio* growth and are expected to increase human exposure.<sup>96, 134, 152, 157</sup>

Most harmful algae, including freshwater cyanobacteria that can contaminate drinking water and marine dinoflagellate species that can contaminate fish and shellfish with natural toxins, thrive during the warm summer season or when water temperatures are higher than usual. As the climate continues to warm, water temperatures will rise above thresholds that promote bloom development earlier in the spring and will persist longer into the fall and expand into higher latitudes. This will result in a longer seasonal window and expanded geographic range for human exposure into higher latitudes.<sup>124, 125, 126, 127, 128, 188, 189, 190, 191, 192, 193</sup> Climate change, especially continued warming, will increase the burden of some marine HAB-related diseases, particularly ciguatera fish poisoning, in some regions of the United States.

#### Major uncertainties

Uncertainty remains regarding the relative importance of additional factors that may also act on naturally occurring pathogens and harmful algae at local or regional levels to influence their growth, distribution, and toxicity. In many cases, it is uncertain how these multiple factors may interact with each other to influence the seasonal windows and geographic range for pathogens and harmful algae, especially in dynamic coastal marine environments. For example, changes in salinity, competition with other plankton, and presence of viruses or other organisms that consume plankton or bacteria can affect abundance.<sup>162, 163</sup> Changing distribution patterns for some marine species of harmful algae is not well understood and some regions may become too warm for certain species of harmful algae to grow, shifting (without changing in total size) or even shrinking their geographic range.

Additionally, there are limited studies on projections for changes in illness rates due to naturally occurring waterborne pathogens and harmful algae. Uncertainty remains regarding appropriate methods for projecting changes in illness rates, including how to integrate considerations of human behavior into modeling (current methods to assess exposure risk



assume similar human behavior across time scales and geography). Methodological challenges are related to 1) underreporting and underdiagnosis of cases that affect the accuracy of baseline estimates of illness, 2) ability to project changes in strain virulence, 3) accounting for the effects of potential adaptation strategies/public health interventions (for example, public service announcements on how to avoid exposure), and 4) accounting for changes in public healthcare infrastructure and access that can reduce the risk of exposure or illness/death if exposed.

#### Assessment of confidence and likelihood based on evidence

Based on the evidence, there is **medium confidence** that, with changing climate, the annual seasonal and the geographic range for *Vibrio* and certain marine harmful algae will expand. The assessment of **medium confidence** is due to less certainty from modeling results regarding the magnitude of projected changes in abundance. The conclusions were deemed **very likely** to occur for *Vibrio* and **likely** for marine harmful algae based on good levels of agreement found in the published quantitative modeling projections for both *Vibrio* and marine harmful algae (*Alexandrium* and *Gambieridiscus*) cited above. This conclusion takes into consideration that for some marine algae (for example, *Gambieridiscus*), lower latitudes may become too warm and risk may decline in those areas as it increases at higher latitudes. For freshwater harmful algae, there is **high confidence** that annual season and geographic range will expand with changing climate, which will also prolong the time for exposure and the potential for public health impacts. Consistent and high-quality evidence from a limited number of laboratory studies, modeling efforts, field surveys, and comparisons of historic and contemporary conditions support this assessment. The conclusion was deemed **very likely** to occur for freshwater harmful algae with **high confidence** based on laboratory studies and field observations, as well as a greater fundamental understanding of inland hydrodynamics and bloom ecology as indicated in the literature cited in the chapter. There is **medium confidence** regarding increased risk to human health from a longer potential time for exposure to waterborne pathogens and algal toxins and potential exposure for a wider (or novel) population. This confidence level was chosen due to less certainty stemming from a relative lack of quantitative data and projections for future illness rates in the peer-reviewed literature.

#### Runoff from Extreme Precipitation Increases Exposure Risk

**Key Finding 2:** Runoff from more frequent and intense extreme precipitation events will increasingly compromise recreational waters, shellfish harvesting waters, and sources of drinking water through increased introduction of pathogens and prevalence of toxic algal blooms [*High Confidence*]. As a result, the risk of human exposure to agents of water-related illness will increase [*Medium Confidence*].

#### Description of evidence base

Extreme precipitation can mobilize pathogens, nutrients, and chemical contaminants from agricultural, wildlife, and urban sources. Waterborne illness and outbreaks from pathogens following heavy precipitation events have been well documented in multiple studies using both passive and active surveillance on a local and regional level.<sup>38, 39, 40, 42, 43, 44, 45, 46, 47</sup> Likewise, extreme precipitation events and subsequent increases in runoff are key climate factors that increase nutrient loading in freshwater and marine recreational waters, shellfish harvesting waters, and sources of drinking water, which in turn increases the likelihood of harmful cyanobacterial blooms that produce algal toxins.<sup>56</sup> The drinking water treatment process can remove cyanobacterial blooms; however, efficacy of the treatment processes may vary from 60% to 99.9%. Ineffective treatment could compromise water quality and may lead to severe treatment disruption or treatment plant shutdown.<sup>53, 54, 55, 56</sup> More frequent and intense extreme precipitation events are projected for many regions in the United States as climate changes. Consistent, high-quality evidence from multiple studies supports a finding that increased runoff and flooding events are expected to increase contamination of source waters (for drinking water supply) and surface waters used for recreation, which may increase people's exposure to pathogens and algal toxins that cause illness.<sup>10, 52, 59, 70, 71, 72, 73, 76, 82, 116, 117, 118, 119, 120</sup> Other factors may modify these risks, such as increased air or water temperatures, residence time in the environment, lower water levels, or dilution.

#### Major uncertainties

Changes in exposure and risk are attributable to many factors in addition to climate. While extreme precipitation and flooding events introduce contaminants and pathogens to water to varying degrees depending on the characteristics of each individual event, they may not always result in increases in exposure due to planning and adaptive actions. There are limited studies on actual projections for changes in illness rates due to increasing frequency or intensity of extreme precipitation events. Uncertainty remains regarding appropriate methods for projecting changes in illness rates, including how to integrate considerations of human behavior into modeling (current methods to assess exposure risk assume similar human behavior across time scales and geography). Methodological challenges are related to 1) baseline case reporting issues (underreporting and underdiagnosis), 2) accounting for the effects of potential adaptation strategies/public health interventions (for example, public service announcements about how to avoid exposure), and 3) accounting for changes in public healthcare infrastructure and access that can reduce the risk of exposure or of illness/death if exposed.

**Assessment of confidence and likelihood based on evidence**

Based on the evidence, there is **high confidence** that increasing frequency or intensity of extreme precipitation events will compromise recreational waters and sources of drinking water with pathogens, nutrients, and chemical contaminants from agricultural, wildlife, and urban sources.

There is consistent qualitative evidence that flooding associated with extreme precipitation events and storm surge results in loading of pathogens and nutrients to surface and groundwater (and drinking water distribution systems) through stormwater runoff and sewage overflows. However, other human and social factors modify risk, and there are no national-level studies upon which to draw conclusions regarding quantitative projections of increased exposure. Thus, the limited number of studies supports a **medium confidence** level that human exposure risk will increase due to changes in extreme events.

**Water Infrastructure Failure**

**Key Finding 3:** Increases in some extreme weather events and storm surges will increase the risk that infrastructure for drinking water, wastewater, and stormwater will fail due to either damage or exceedance of system capacity, especially in areas with aging infrastructure [*High Confidence*]. As a result, the risk of exposure to water-related pathogens, chemicals, and algal toxins will increase in recreational and shellfish harvesting waters and in drinking water where treatment barriers break down [*Medium Confidence*].

**Description of evidence base**

Water infrastructure in the United States is aging and may be inadequate or deteriorating. Combined sewers in many older cities were not designed to handle extreme precipitation events that are becoming more frequent with climate change. Multiple studies provide consistent, high-quality evidence that these systems are at risk of being overwhelmed during flood events or may be further damaged during other extreme weather events (e.g., storm surge), allowing contaminated surface water to run off into drinking water and recreational water sources.<sup>10, 52, 59, 70, 76, 116</sup> Drinking water source contamination may be exacerbated or insufficiently addressed by treatment processes at the plant or the distribution system. Drinking water treatment plants may be challenged by high pathogen loads and toxic cyanobacterial bloom events.<sup>52, 55, 56</sup> Multiple studies support a finding that climate change will place additional stresses on the capacity of drinking water treatment facilities and may increase the risk that water infrastructure, especially aging infrastructure, will fail through either damage or exceedance of system capacity.<sup>6, 70, 74, 75</sup>

**Major uncertainties**

The human health consequences of aging water infrastructure failure depend not only on the local and regional climate factors that contribute to damage or capacity challenges but also the nature of the system and the pressures on it, the population affected, and the timeliness and adequacy of the response—all of which are inherently local or regional factors. Due to the complicated local and regional specificity, there are no national projections of the human health impact of water infrastructure failure. Uncertainty remains regarding appropriate methods for projecting changes in illness rates, including how to integrate considerations of human behavior into modeling (current methods to assess exposure risk assume similar human behavior across time scales and geography). Methodological challenges are related to 1) baseline case reporting issues (underreporting and underdiagnosis), 2) accounting for the effects of potential adaptation strategies/public health interventions (for example, mitigating risk with improvements to current water and sewerage systems), and 3) accounting for changes in public healthcare infrastructure and access that can reduce the risk of exposure or of illness/death if exposed.

**Assessment of confidence based on evidence**

Based on the evidence found in the peer-reviewed literature, there is **high confidence** that the anticipated climate change related increases in some extreme weather events and in storm surge will increase the risk that water infrastructure for drinking water, wastewater, and stormwater will fail through either damage or exceedance of system capacity, with aging infrastructure being particularly vulnerable. Evidence shows contamination to or from these systems occurs with heavy precipitation and other extreme weather events. There is consistent qualitative evidence suggesting that projected climate change effects on extreme weather patterns—particularly extreme precipitation and storm surge—can adversely affect water infrastructure and lead to increased loading of pathogens, algal toxins, and contaminants. However, there are no national-level studies upon which to draw conclusions regarding quantitative projections of increased exposure. Thus, the limited number of studies supports a **medium confidence** level regarding risk of exposure.

## DOCUMENTING UNCERTAINTY

This assessment relies on two metrics to communicate the degree of certainty in Key Findings. See Appendix 4: Documenting Uncertainty for more on assessments of likelihood and confidence.

Confidence Level	Likelihood
<b>Very High</b>	<b>Very Likely</b>
Strong evidence (established theory, multiple sources, consistent results, well documented and accepted methods, etc.), high consensus	$\geq 9$ in 10
<b>High</b>	<b>Likely</b>
Moderate evidence (several sources, some consistency, methods vary and/or documentation limited, etc.), medium consensus	$\geq 2$ in 3
<b>Medium</b>	<b>As Likely As Not</b>
Suggestive evidence (a few sources, limited consistency, models incomplete, methods emerging, etc.), competing schools of thought	$\approx 1$ in 2
<b>Low</b>	<b>Unlikely</b>
Inconclusive evidence (limited sources, extrapolations, inconsistent findings, poor documentation and/or methods not tested, etc.), disagreement or lack of opinions among experts	$\leq 1$ in 3
	<b>Very Unlikely</b>
	$\leq 1$ in 10

## PHOTO CREDITS

Pg. 157—Hands cupping water: © iStockPhotos.com/jacky9946

Pg. 158—Young women walking through floodwater: © Richard Ellis/Corbis

Pg. 163—Heavy rain: © iStockPhoto.com/AndreasWeber

Pg. 165—Family jumping in lake: © Juice Images/Corbis

Pg. 171—Razor clam dig: Courtesy of Vera Trainer/NOAA

# References

1. Melillo, J.M., T.C. Richmond, and G.W. Yohe, Eds., 2014: *Climate Change Impacts in the United States: The Third National Climate Assessment*. U.S. Global Change Research Program, Washington, D.C., 842 pp. <http://dx.doi.org/10.7930/J0Z31WJ2>
2. Colford, J.M., Jr., S. Roy, M.J. Beach, A. Hightower, S.E. Shaw, and T.J. Wade, 2006: A review of household drinking water intervention trials and an approach to the estimation of endemic waterborne gastroenteritis in the United States. *Journal of Water and Health*, **4 Suppl 2**, 71-88. <http://dx.doi.org/10.2166/wh.2006.018>
3. Messner, M., S. Shaw, S. Regli, K. Rotert, V. Blank, and J. Soller, 2006: An approach for developing a national estimate of waterborne disease due to drinking water and a national estimate model application. *Journal of Water and Health*, **4 Suppl 2**, 201-240. <http://dx.doi.org/10.2166/wh.2006.024>
4. Reynolds, K.A., K.D. Mena, and C.P. Gerba, 2008: Risk of waterborne illness via drinking water in the United States. *Reviews of Environmental Contamination and Toxicology*, **192**, 117-158. [http://dx.doi.org/10.1007/978-0-387-71724-1\\_4](http://dx.doi.org/10.1007/978-0-387-71724-1_4)
5. Soller, J.A., T. Bartrand, N.J. Ashbolt, J. Ravenscroft, and T.J. Wade, 2010: Estimating the primary etiologic agents in recreational freshwaters impacted by human sources of faecal contamination. *Water Research*, **44**, 4736-4747. <http://dx.doi.org/10.1016/j.watres.2010.07.064>
6. Beach, M.J., S. Roy, J. Brunkard, J. Yoder, and M.C. Hlavsa, 2009: The changing epidemiology of waterborne disease outbreaks in the United States: Implications for system infrastructure and future planning. *Global Issues in Water, Sanitation, and Health: Workshop Summary*. Institute of Medicine. The National Academies Press, Washington, D.C., 156-168. <http://dx.doi.org/10.17226/12658>
7. Scallan, E., R.M. Hoekstra, F.J. Angulo, R.V. Tauxe, M.A. Widdowson, S.L. Roy, J.L. Jones, and P.M. Griffin, 2011: Foodborne illness acquired in the United States: Major pathogens. *Emerging Infectious Diseases*, **17**, 7-15. <http://dx.doi.org/10.3201/eid1701.P11101>
8. EPA, 2004: Report to Congress: Impacts and Control of CSOs and SSOs. EPA 833-R-04-001. U.S. Environmental Protection Agency, Office of Water, Washington, D.C. <http://water.epa.gov/polwaste/npdes/cso/2004-Report-to-Congress.cfm>
9. Montserrat, A., L. Bosch, M.A. Kiser, M. Poch, and L. Corominas, 2015: Using data from monitoring combined sewer overflows to assess, improve, and maintain combined sewer systems. *Science of the Total Environment*, **505**, 1053-1061. <http://dx.doi.org/10.1016/j.scitotenv.2014.10.087>
10. Patz, J.A., S.J. Vavrus, C.K. Uejio, and S.L. McLellan, 2008: Climate change and waterborne disease risk in the Great Lakes region of the US. *American Journal of Preventive Medicine*, **35**, 451-458. <http://dx.doi.org/10.1016/j.amepre.2008.08.026>
11. EPA, 2008: A Screening Assessment of the Potential Impacts of Climate Change on Combined Sewer Overflow Mitigation in the Great Lakes and New England Regions. EPA/600/R-07/033F, 50 pp. U.S. Environmental Protection Agency, Washington, D.C. <http://cfpub.epa.gov/ncea/cfm/recordisplay.cfm?deid=188306>
12. Cutter, S.L., W. Solecki, N. Bragado, J. Carmin, M. Fragkias, M. Ruth, and T. Wilbanks, 2014: Ch. 11: Urban systems, infrastructure, and vulnerability. *Climate Change Impacts in the United States: The Third National Climate Assessment*. Melillo, J.M., T.C. Richmond, and G.W. Yohe, Eds. U.S. Global Change Research Program, Washington, D.C., 282-296. <http://dx.doi.org/10.7930/J0F769GR>
13. Gargano, J.W., A.L. Freeland, M.A. Morrison, K. Stevens, L. Zajac, A. Wolkon, A. Hightower, M.D. Miller, and J.M. Brunkard, 2015: Acute gastrointestinal illness following a prolonged community-wide water emergency. *Epidemiology and Infection*, **143**, 2766-2776. <http://dx.doi.org/10.1017/S0950268814003501>
14. Converse, R.R., M.F. Piehler, and R.T. Noble, 2011: Contrasts in concentrations and loads of conventional and alternative indicators of fecal contamination in coastal stormwater. *Water Research*, **45**, 5229-5240. <http://dx.doi.org/10.1016/j.watres.2011.07.029>
15. Futch, J.C., D.W. Griffin, and E.K. Lipp, 2010: Human enteric viruses in groundwater indicate offshore transport of human sewage to coral reefs of the Upper Florida Keys. *Environmental Microbiology*, **12**, 964-974. <http://dx.doi.org/10.1111/j.1462-2920.2010.02141.x>
16. Futch, J.C., D.W. Griffin, K. Banks, and E.K. Lipp, 2011: Evaluation of sewage source and fate on southeast Florida coastal reefs. *Marine Pollution Bulletin*, **62**, 2308-2316. <http://dx.doi.org/10.1016/j.marpolbul.2011.08.046>
17. Levantesi, C., L. Bonadonna, R. Briancesco, E. Grohmann, S. Toze, and V. Tandoi, 2012: *Salmonella* in surface and drinking water: Occurrence and water-mediated transmission. *Food Research International*, **45**, 587-602. <http://dx.doi.org/10.1016/j.foodres.2011.06.037>
18. Molina, M., S. Hunter, M. Cyterski, L.A. Peed, C.A. Kelly, M. Sivaganesan, T. Mooney, L. Prieto, and O.C. Shanks, 2014: Factors affecting the presence of human-associated and fecal indicator real-time quantitative PCR genetic markers in urban-impacted recreational beaches. *Water Research*, **64**, 196-208. <http://dx.doi.org/10.1016/j.watres.2014.06.036>



19. Sauer, E.P., J.L. VandeWalle, M.J. Bootsma, and S.L. McLellan, 2011: Detection of the human specific *Bacteroides* genetic marker provides evidence of widespread sewage contamination of stormwater in the urban environment. *Water Research*, **45**, 4081-4091. <http://dx.doi.org/10.1016/j.watres.2011.04.049>
20. Sercu, B., L.C. Van De Werfhorst, J.L.S. Murray, and P.A. Holden, 2011: Sewage exfiltration as a source of storm drain contamination during dry weather in urban watersheds. *Environmental Science & Technology*, **45**, 7151-7157. <http://dx.doi.org/10.1021/es200981k>
21. Uejio, C.K., S.H. Yale, K. Malecki, M.A. Borchardt, H.A. Anderson, and J.A. Patz, 2014: Drinking water systems, hydrology, and childhood gastrointestinal illness in central and northern Wisconsin. *American Journal of Public Health*, **104**, 639-646. <http://dx.doi.org/10.2105/ajph.2013.301659>
22. Walthall, C., P. Backlund, J. Hatfield, L. Lengnick, E. Marshall, M. Walsh, S. Adkins, M. Aillery, E.A. Ainsworth, C. Amman, C.J. Anderson, I. Bartomeus, L.H. Baumgard, F. Booker, B. Bradley, D.M. Blumenthal, J. Bunce, K. Burkley, S.M. Dabney, J.A. Delgado, J. Dukes, A. Funk, K. Garrett, M. Glenn, D.A. Grantz, D. Goodrich, S. Hu, R.C. Izaurrealde, R.A.C. Jones, S.-H. Kim, A.D.B. Leaky, K. Lewers, T.L. Mader, A. McClung, J. Morgan, D.J. Muth, M. Nearing, D.M. Oosterhuis, D. Ort, C. Parmesan, W.T. Pettigrew, W. Polley, R. Rader, C. Rice, M. Rivington, E. Roskopf, W.A. Salas, L.E. Sollenberger, R. Srygley, C. Stöckle, E.S. Takle, D. Timlin, J.W. White, R. Winfree, L. Wright-Morton, and L.H. Ziska, 2012: Climate Change and Agriculture in the United States: Effects and Adaptation. USDA Technical Bulletin 1935, 186 pp. U.S. Department of Agriculture, Washington, D.C. [http://www.usda.gov/oce/climate\\_change/effects\\_2012/CC and Agriculture Report \(02-04-2013\)b.pdf](http://www.usda.gov/oce/climate_change/effects_2012/CC and Agriculture Report (02-04-2013)b.pdf)
23. GAO, 2008: Concentrated Animal Feeding Operations: EPA Needs More Information and a Clearly Defined Strategy to Protect Air and Water Quality from Pollutants of Concern. GAO-08-944, 79 pp. U.S. Government Accountability Office. <http://www.gao.gov/new.items/d08944.pdf>
24. Hribar, C., 2010: Understanding Concentrated Animal Feeding Operations and Their Impact on Communities. Schultz, M. (Ed.), 22 pp. National Association of Local Boards of Health, Bowling Green, OH. [http://www.cdc.gov/nceh/ehs/docs/understanding\\_cafos\\_nalboh.pdf](http://www.cdc.gov/nceh/ehs/docs/understanding_cafos_nalboh.pdf)
25. NRC, 2010: *Toward Sustainable Agricultural Systems in the 21st Century*. National Research Council. The National Academies Press, Washington, D.C., 598 pp. <http://dx.doi.org/10.17226/12832>
26. Sun, L., K.E. Kunkel, L.E. Stevens, A. Buddenberg, J.G. Dobson, and D.R. Easterling, 2015: Regional Surface Climate Conditions in CMIP3 and CMIP5 for the United States: Differences, Similarities, and Implications for the U.S. National Climate Assessment. NOAA Technical Report NESDIS 144, 111 pp. National Oceanic and Atmospheric Administration, National Environmental Satellite, Data, and Information Service. [http://www.nesdis.noaa.gov/technical\\_reports/NOAA\\_NESDIS\\_Technical\\_Report\\_144.pdf](http://www.nesdis.noaa.gov/technical_reports/NOAA_NESDIS_Technical_Report_144.pdf)
27. USDA, 2014: 2012 Census of Agriculture. 695 pp. U.S. Department of Agriculture, National Agricultural Statistics Service, Washington, D.C. <http://www.agcensus.usda.gov/Publications/2012/>
28. Miller, W.A., D.J. Lewis, M. Lennox, M.G.C. Pereira, K.W. Tate, P.A. Conrad, and E.R. Atwill, 2007: Climate and on-farm risk factors associated with *Giardia duodenalis* cysts in storm runoff from California coastal dairies. *Applied and Environmental Microbiology*, **73**, 6972-6979. <http://dx.doi.org/10.1128/aem.00100-07>
29. Wilkes, G., J. Brassard, T.A. Edge, V. Gannon, C.C. Jokinen, T.H. Jones, R. Marti, N.F. Neumann, N.J. Ruecker, M. Sunohara, E. Topp, and D.R. Lapen, 2013: Coherence among different microbial source tracking markers in a small agricultural stream with or without livestock exclusion practices. *Applied and Environmental Microbiology*, **79**, 6207-6219. <http://dx.doi.org/10.1128/aem.01626-13>
30. Kilonzo, C., X. Li, E.J. Vivas, M.T. Jay-Russell, K.L. Fernandez, and E.R. Atwill, 2013: Fecal shedding of zoonotic food-borne pathogens by wild rodents in a major agricultural region of the central California coast. *Applied and Environmental Microbiology*, **79**, 6337-6344. <http://dx.doi.org/10.1128/aem.01503-13>
31. Fremaux, B., T. Boa, and C.K. Yost, 2010: Quantitative real-time PCR assays for sensitive detection of Canada goose-specific fecal pollution in water sources. *Applied and Environmental Microbiology*, **76**, 4886-4889. <http://dx.doi.org/10.1128/aem.00110-10>
32. Parmesan, C. and G. Yohe, 2003: A globally coherent fingerprint of climate change impacts across natural systems. *Nature*, **421**, 37-42. <http://dx.doi.org/10.1038/nature01286>
33. Craun, G.F., J.M. Brunkard, J.S. Yoder, V.A. Roberts, J. Carpenter, T. Wade, R.L. Calderon, J.M. Roberts, M.J. Beach, and S.L. Roy, 2010: Causes of outbreaks associated with drinking water in the United States from 1971 to 2006. *Clinical Microbiology Reviews*, **23**, 507-528. <http://dx.doi.org/10.1128/cmr.00077-09>
34. EPA, 2015: Public Drinking Water Systems Programs: Overview. U.S. Environmental Protection Agency, Washington, D.C. <http://water.epa.gov/infrastructure/drinkingwater/pws/index.cfm>

35. EPA, 2012: Private Drinking Water Wells. U.S. Environmental Protection Agency. <http://water.epa.gov/drink/info/well/index.cfm>
36. 42 USC. Sec 300f et seq., 1974: The Safe Drinking Water Act. <http://www.gpo.gov/fdsys/pkg/USCODE-2011-title42/pdf/USCODE-2011-title42-chap6A-subchapXII-partA-sec300f.pdf>
37. Hilborn, E.D., T.J. Wade, L. Hicks, L. Garrison, J. Carpenter, E. Adam, B. Mull, J.S. Yoder, V. Roberts, and J.W. Gargano, 2013: Surveillance for waterborne disease outbreaks associated with drinking water and other nonrecreational water — United States, 2009–2010. *MMWR. Morbidity and Mortality Weekly Report*, **62**, 714-720. <http://www.cdc.gov/mmwr/preview/mmwrhtml/mm6235a3.htm>
38. Curriero, F.C., J.A. Patz, J.B. Rose, and S. Lele, 2001: The association between extreme precipitation and waterborne disease outbreaks in the United States, 1948–1994. *American Journal of Public Health*, **91**, 1194-1199. <http://dx.doi.org/10.2105/AJPH.91.8.1194>
39. Brunkard, J.M., E. Ailes, V.A. Roberts, V. Hill, E.D. Hilborn, G.F. Craun, A. Rajasingham, A. Kahler, L. Garisson, L. Hicks, J. Carpenter, T.J. Wade, M.J. Beach, and J.S. Yoder, 2011: Surveillance for waterborne disease outbreaks associated with drinking water — United States, 2007–2008. *MMWR Surveillance Summaries*, **60(SS12)**, 38-68. <http://www.cdc.gov/mmwr/preview/mmwrhtml/ss6012a4.htm>
40. Bradbury, K.R., M.A. Borchardt, M. Gotkowitz, S.K. Spencer, J. Zhu, and R.J. Hunt, 2013: Source and transport of human enteric viruses in deep municipal water supply wells. *Environmental Science & Technology*, **47**, 4096-4103. <http://dx.doi.org/10.1021/es400509b>
41. Drayna, P., S.L. McLellan, P. Simpson, S.-H. Li, and M.H. Gorelick, 2010: Association between rainfall and pediatric emergency department visits for acute gastrointestinal illness. *Environmental Health Perspectives*, **118**, 1439-1443. <http://dx.doi.org/10.1289/ehp.0901671>
42. Jofre, J., A.R. Blanch, and F. Lucena, 2010: Water-borne infectious disease outbreaks associated with water scarcity and rainfall events. *Water Scarcity in the Mediterranean: Perspectives under Global Change*. Sabater, S. and D. Barcelo, Eds. Springer, Berlin, 147-159. [http://dx.doi.org/10.1007/698\\_2009\\_22](http://dx.doi.org/10.1007/698_2009_22)
43. Auld, H., D. Maclver, and J. Klaassen, 2004: Heavy rainfall and waterborne disease outbreaks: The Walkerton example. *Journal of Toxicology and Environmental Health, Part A*, **67**, 1879-1887. <http://dx.doi.org/10.1080/15287390490493475>
44. Salvadori, M.I., J.M. Sontrop, A.X. Garg, L.M. Moist, R.S. Suri, and W.F. Clark, 2009: Factors that led to the Walkerton tragedy. *Kidney International*, **75**, S33-S34. <http://dx.doi.org/10.1038/ki.2008.616>
45. Fong, T.-T., L.S. Mansfield, D.L. Wilson, D.J. Schwab, S.L. Molloy, and J.B. Rose, 2007: Massive microbiological groundwater contamination associated with a waterborne outbreak in Lake Erie, South Bass Island, Ohio. *Environmental Health Perspectives*, **115**, 856-864. <http://dx.doi.org/10.1289/ehp.9430>
46. Hoxie, N.J., J.P. Davis, J.M. Vergeront, R.D. Nashold, and K.A. Blair, 1997: Cryptosporidiosis-associated mortality following a massive waterborne outbreak in Milwaukee, Wisconsin. *American Journal of Public Health*, **87**, 2032-2035. <http://dx.doi.org/10.2105/ajph.87.12.2032>
47. Mac Kenzie, W.R., N.J. Hoxie, M.E. Proctor, M.S. Gradus, K.A. Blair, D.E. Peterson, J.J. Kazmierczak, D.G. Addiss, K.R. Fox, J.B. Rose, and J.P. Davis, 1994: A massive outbreak in Milwaukee of Cryptosporidium infection transmitted through the public water supply. *The New England Journal of Medicine*, **331**, 161-167. <http://dx.doi.org/10.1056/nejm199407213310304>
48. Nichols, G., C. Lane, N. Asgari, N.Q. Verlander, and A. Charlett, 2009: Rainfall and outbreaks of drinking water related disease and in England and Wales. *Journal of Water Health*, **7**, 1-8. <http://dx.doi.org/10.2166/wh.2009.143>
49. Kozlica, J., A.L. Claudet, D. Solomon, J.R. Dunn, and L.R. Carpenter, 2010: Waterborne outbreak of Salmonella I 4,[5],12:i:-. *Foodborne Pathogens and Disease*, **7**, 1431-1433. <http://dx.doi.org/10.1089/fpd.2010.0556>
50. Clark, C.G., L. Price, R. Ahmed, D.L. Woodward, P.L. Melitto, F.G. Rodgers, F. Jamieson, B. Ciebin, A. Li, and A. Ellis, 2003: Characterization of waterborne outbreak-associated *Campylobacter jejuni*, Walkerton, Ontario. *Emerging Infectious Diseases*, **9**, 1232-1241. <http://dx.doi.org/10.3201/eid0910.020584>
51. Walkerton Commission of Inquiry, 2002: Part One Report of the Walkerton Commission of Inquiry: The Events of May 2000 and Related Issues. 504 pp. Ontario Ministry of the Attorney General, Toronto, ONT. <http://www.attorney-general.jus.gov.on.ca/english/about/pubs/walkerton/part1/>
52. Delpla, I., A.-V. Jung, E. Baures, M. Clement, and O. Thomas, 2009: Impacts of climate change on surface water quality in relation to drinking water production. *Environment International*, **35**, 1225-1233. <http://dx.doi.org/10.1016/j.envint.2009.07.001>
53. EPA, 2015: 2015 Drinking Water Health Advisories for Two Cyanobacterial Toxins. EPA 820F15003. U.S. Environmental Protection Agency, Office of Water. [http://www2.epa.gov/sites/production/files/2015-06/documents/cyanotoxins-fact\\_sheet-2015.pdf](http://www2.epa.gov/sites/production/files/2015-06/documents/cyanotoxins-fact_sheet-2015.pdf)
54. EPA, 2015: Recommendations for Public Water Systems to Manage Cyanotoxins in Drinking Water. EPA 815-R-15-010. U.S. Environmental Protection Agency, Office of Water. <http://www2.epa.gov/sites/production/files/2015-06/documents/cyanotoxin-management-drinking-water.pdf>

55. Zamyadi, A., S.L. MacLeod, Y. Fan, N. McQuaid, S. Dorner, S. Sauvé, and M. Prévost, 2012: Toxic cyanobacterial breakthrough and accumulation in a drinking water plant: A monitoring and treatment challenge. *Water Research*, **46**, 1511-1523. <http://dx.doi.org/10.1016/j.watres.2011.11.012>
56. Zamyadi, A., S. Dorner, S. Sauve, D. Ellis, A. Bolduc, C. Bastien, and M. Prevost, 2013: Species-dependence of cyanobacteria removal efficiency by different drinking water treatment processes. *Water Research*, **47**, 2689-2700. <http://dx.doi.org/10.1016/j.watres.2013.02.040>
57. City of Toledo, 2014: Microcystin Event Preliminary Summary. 73 pp. City of Toledo Department of Public Utilities. <http://toledo.oh.gov/media/132055/Microcystin-Test-Results.pdf>
58. Georgakakos, A., P. Fleming, M. Dettinger, C. Peters-Lidard, T.C. Richmond, K. Reckhow, K. White, and D. Yates, 2014: Ch. 3: Water resources. *Climate Change Impacts in the United States: The Third National Climate Assessment*. Melillo, J.M., T.C. Richmond, and G.W. Yohe, Eds. U.S. Global Change Research Program, Washington, D.C., 69-112. <http://dx.doi.org/10.7930/J0G44N6T>
59. Cann, K.F., D.R. Thomas, R.L. Salmon, A.P. Wyn-Jones, and D. Kay, 2013: Extreme water-related weather events and waterborne disease. *Epidemiology and Infection*, **141**, 671-86. <http://dx.doi.org/10.1017/s0950268812001653>
60. Angelakis, A.N. and P. Gikas, 2014: Water reuse: Overview of current practices and trends in the world with emphasis on EU states. *Water Utility Journal*, **8**, 67-78. [http://www.ewra.net/wuj/pdf/WUJ\\_2014\\_08\\_07.pdf](http://www.ewra.net/wuj/pdf/WUJ_2014_08_07.pdf)
61. Jimenez, B. and T. Asano, 2008: Water reclamation and reuse around the world. *Water Reuse: An International Survey of Current Practice, Issues and Needs*. IWA Publishing, London, UK.
62. Wintgens, T., F. Salehi, R. Hochstrat, and T. Melin, 2008: Emerging contaminants and treatment options in water recycling for indirect potable use. *Water Science & Technology*, **57**, 99-107. <http://dx.doi.org/10.2166/wst.2008.799>
63. MacDonald, G.M., 2010: Water, climate change, and sustainability in the southwest. *Proceedings of the National Academy of Sciences*, **107**, 21256-21262. <http://dx.doi.org/10.1073/pnas.0909651107>
64. NRC, 2012: *Water Reuse: Potential for Expanding the Nation's Water Supply through Reuse of Municipal Wastewater*. National Academies Press, Washington, D.C.
65. Vo, P.T., H.H. Ngo, W. Guo, J.L. Zhou, P.D. Nguyen, A. Listowski, and X.C. Wang, 2014: A mini-review on the impacts of climate change on wastewater reclamation and reuse. *Science of the Total Environment*, **494-495**, 9-17. <http://dx.doi.org/10.1016/j.scitotenv.2014.06.090>
66. Bastian, R. and D. Murray, 2012: 2012 Guidelines for Water Reuse. EPA/600/R-12/618, 643 pp. U.S. EPA Office of Research and Development, Washington, D.C. <http://nepis.epa.gov/Adobe/PDF/P100FS7K.pdf>
67. Shuster, W.D., D. Lye, A. De La Cruz, L.K. Rhea, K. O'Connell, and A. Kelty, 2013: Assessment of residential rain barrel water quality and use in Cincinnati, Ohio. *Journal of the American Water Resources Association*, **49**, 753-765. <http://dx.doi.org/10.1111/jawr.12036>
68. Ahmed, W., A. Vieritz, A. Goonetilleke, and T. Gardner, 2010: Health risk from the use of roof-harvested rainwater in southeast Queensland, Australia, as potable or nonpotable water, determined using quantitative microbial risk assessment. *Applied and Environmental Microbiology*, **76**, 7382-7391. <http://dx.doi.org/10.1128/AEM.00944-10>
69. Lye, D.J., 2002: Health risks associated with consumption of untreated water from household roof catchment systems. *Journal of the American Water Resources Association*, **38**, 1301-1306.
70. Whitehead, P.G., R.L. Wilby, R.W. Battarbee, M. Kernan, and A.J. Wade, 2009: A review of the potential impacts of climate change on surface water quality. *Hydrological Sciences Journal*, **54**, 101-123. <http://dx.doi.org/10.1623/hysj.54.1.101>
71. Sterk, A., J. Schijven, T. de Nijs, and A.M. de Roda Husman, 2013: Direct and indirect effects of climate change on the risk of infection by water-transmitted pathogens. *Environmental Science & Technology*, **47**, 12648-12660. <http://dx.doi.org/10.1021/es403549s>
72. Schijven, J., M. Bouwknecht, A.M. de Roda Husman, S. Rutjes, B. Sudre, J.E. Suk, and J.C. Semenza, 2013: A decision support tool to compare waterborne and foodborne infection and/or illness risks associated with climate change. *Risk Analysis*, **33**, 2154-2167. <http://dx.doi.org/10.1111/risa.12077>
73. Smith, B.A., T. Ruthman, E. Sparling, H. Auld, N. Comer, I. Young, A.M. Lammerding, and A. Fazil, 2015: A risk modeling framework to evaluate the impacts of climate change and adaptation on food and water safety. *Food Research International*, **68**, 78-85. <http://dx.doi.org/10.1016/j.foodres.2014.07.006>
74. Levin, R.B., P.R. Epstein, T.E. Ford, W. Harrington, E. Olson, and E.G. Reichard, 2002: U.S. drinking water challenges in the twenty-first century. *Environmental Health Perspectives*, **110**, 43-52. PMC1241146
75. Rose, J.B., P.R. Epstein, E.K. Lipp, B.H. Sherman, S.M. Bernard, and J.A. Patz, 2001: Climate variability and change in the United States: Potential impacts on water- and foodborne diseases caused by microbiologic agents. *Environmental Health Perspectives*, **109 Suppl 2**, 211-221. PMC1240668



76. Perry, D., D. Bennett, U. Boudjou, M. Hahn, S. McLellan, and S. Elizabeth, 2012: Effect of climate change on sewer overflows in Milwaukee. *Proceedings of the Water Environment Federation, WEFTEC 2012: Session 30*, pp. 1857-1866. <http://dx.doi.org/10.2175/193864712811725546>
77. Hlavsa, M.C., V.A. Roberts, A. Kahler, E.D. Hilborn, T.J. Wade, L.C. Backer, and J.S. Yoder, 2014: Recreational water-associated disease outbreaks — United States, 2009–2010. *MMWR. Morbidity and Mortality Weekly Report*, **63**, 6-10. <http://www.cdc.gov/mmwr/preview/mmwrhtml/mm6301a2.htm>
78. Stumpf, R.P., V. Fleming-Lehtinen, and E. Granéli, 2010: Integration of data for nowcasting of harmful algal blooms. *Proceedings of OceanObs'09: Sustained Ocean Observations and Information for Society (Volume 1)*, 21-25 September, Venice, Italy. Hall, J., D.E. Harrison, and D. Stammer, Eds. <http://www.oceanobs09.net/proceedings/pp/pp36/index.php>
79. Colford, J.M., Jr., K.C. Schiff, J.F. Griffith, V. Yau, B.F. Arnold, C.C. Wright, J.S. Gruber, T.J. Wade, S. Burns, J. Hayes, C. McGee, M. Gold, Y. Cao, R.T. Noble, R. Haugland, and S.B. Weisberg, 2012: Using rapid indicators for *Enterococcus* to assess the risk of illness after exposure to urban runoff contaminated marine water. *Water Research*, **46**, 2176-2186. <http://dx.doi.org/10.1016/j.watres.2012.01.033>
80. Colford, J.M., Jr., T.J. Wade, K.C. Schiff, C.C. Wright, J.F. Griffith, S.K. Sandhu, S. Burns, M. Sobsey, G. Lovelace, and S.B. Weisberg, 2007: Water quality indicators and the risk of illness at beaches with nonpoint sources of fecal contamination. *Epidemiology*, **18**, 27-35. <http://dx.doi.org/10.1097/01.ede.0000249425.32990.b9>
81. Wade, T.J., E. Sams, K.P. Brenner, R. Haugland, E. Chern, M. Beach, L. Wymer, C.C. Rankin, D. Love, Q. Li, R. Noble, and A.P. Dufour, 2010: Rapidly measured indicators of recreational water quality and swimming-associated illness at marine beaches: A prospective cohort study. *Environmental Health*, **Article 66**. <http://dx.doi.org/10.1186/1476-069X-9-66>
82. Haley, B.J., D.J. Cole, and E.K. Lipp, 2009: Distribution, diversity, and seasonality of waterborne salmonellae in a rural watershed. *Applied and Environmental Microbiology*, **75**, 1248-1255. <http://dx.doi.org/10.1128/aem.01648-08>
83. Vereen, E., Jr., R.R. Lowrance, D.J. Cole, and E.K. Lipp, 2007: Distribution and ecology of campylobacters in coastal plain streams (Georgia, United States of America). *Applied and Environmental Microbiology*, **73**, 1395-1403. <http://dx.doi.org/10.1128/aem.01621-06>
84. Vereen, E., Jr., R.R. Lowrance, M.B. Jenkins, P. Adams, S. Rajeev, and E.K. Lipp, 2013: Landscape and seasonal factors influence *Salmonella* and *Campylobacter* prevalence in a rural mixed use watershed. *Water Research*, **47**, 6075-6085. <http://dx.doi.org/10.1016/j.watres.2013.07.028>
85. Bharti, A.R., J.E. Nally, J.N. Ricaldi, M.A. Matthias, M.M. Diaz, M.A. Lovett, P.N. Levett, R.H. Gilman, M.R. Willig, E. Gotuzzo, and J.M. Vinetz, 2003: Leptospirosis: A zoonotic disease of global importance. *The Lancet Infectious Diseases*, **3**, 757-771. [http://dx.doi.org/10.1016/S1473-3099\(03\)00830-2](http://dx.doi.org/10.1016/S1473-3099(03)00830-2)
86. Howell, D. and D. Cole, 2006: Leptospirosis: A waterborne zoonotic disease of global importance. *Georgia Epidemiology Report*, **22**, 1-2. [http://dph.georgia.gov/sites/dph.georgia.gov/files/related\\_files/site\\_page/ADES\\_Aug06GER.pdf](http://dph.georgia.gov/sites/dph.georgia.gov/files/related_files/site_page/ADES_Aug06GER.pdf)
87. Lau, C.L., L.D. Smythe, S.B. Craig, and P. Weinstein, 2010: Climate change, flooding, urbanisation and leptospirosis: Fuelling the fire? *Transactions of the Royal Society of Tropical Medicine and Hygiene*, **104**, 631-638. <http://dx.doi.org/10.1016/j.trstmh.2010.07.002>
88. Lau, C.L., A.J. Dobson, L.D. Smythe, E.J. Fearnley, C. Skelly, A.C.A. Clements, S.B. Craig, S.D. Fuimaono, and P. Weinstein, 2012: Leptospirosis in American Samoa 2010: Epidemiology, environmental drivers, and the management of emergence. *The American Journal of Tropical Medicine and Hygiene*, **86**, 309-319. <http://dx.doi.org/10.4269/ajtmh.2012.11-0398>
89. Katz, A.R., A.E. Buchholz, K. Hinson, S.Y. Park, and P.V. Effler, 2011: Leptospirosis in Hawaii, USA, 1999–2008. *Emerging Infectious Diseases*, **17**, 221-226. <http://dx.doi.org/10.3201/eid1702.101109>
90. Hartskeerl, R.A., M. Collares-Pereira, and W.A. Ellis, 2011: Emergence, control and re-emerging leptospirosis: Dynamics of infection in the changing world. *Clinical Microbiology and Infection*, **17**, 494-501. <http://dx.doi.org/10.1111/j.1469-0691.2011.03474.x>
91. Desvars, A., S. Jégo, F. Chiroleu, P. Bourhy, E. Cardinale, and A. Michault, 2011: Seasonality of human leptospirosis in Reunion Island (Indian Ocean) and its association with meteorological data. *PLoS ONE*, **6**, e20377. <http://dx.doi.org/10.1371/journal.pone.0020377>
92. Newton, A., M. Kendall, D.J. Vugia, O.L. Henao, and B.E. Mahon, 2012: Increasing rates of vibriosis in the United States, 1996–2010: Review of surveillance data from 2 systems. *Clinical Infectious Diseases*, **54**, S391-S395. <http://dx.doi.org/10.1093/cid/cis243>
93. Dechet, A.M., P.A. Yu, N. Koram, and J. Painter, 2008: Nonfoodborne *Vibrio* infections: An important cause of morbidity and mortality in the United States, 1997–2006. *Clinical Infectious Diseases*, **46**, 970-976. <http://dx.doi.org/10.1086/529148>



94. Yoder, J.S., M.C. Hlavsa, G.F. Craun, V. Hill, V. Roberts, P.A. Yu, L.A. Hicks, N.T. Alexander, R.L. Calderon, S.L. Roy, and M.J. Beach, 2008: Surveillance for waterborne disease and outbreaks associated with recreational water use and other aquatic facility-associated health events--United States, 2005-2006. *MMWR Surveillance Summaries*, **57(SS09)**, 1-29. <http://www.cdc.gov/mmWR/preview/mmwrhtml/ss5709a1.htm>
95. Froelich, B., J. Bowen, R. Gonzalez, A. Snedeker, and R. Noble, 2013: Mechanistic and statistical models of total *Vibrio* abundance in the Neuse River Estuary. *Water Research*, **47**, 5783-5793. <http://dx.doi.org/10.1016/j.watres.2013.06.050>
96. Vezzulli, L., I. Brettar, E. Pezzati, P.C. Reid, R.R. Colwell, M.G. Höfle, and C. Pruzzo, 2012: Long-term effects of ocean warming on the prokaryotic community: Evidence from the vibrios. *The ISME Journal*, **6**, 21-30. <http://dx.doi.org/10.1038/ismej.2011.89>
97. Lipp, E.K., C. Rodriguez-Palacios, and J.B. Rose, 2001: Occurrence and distribution of the human pathogen *Vibrio vulnificus* in a subtropical Gulf of Mexico estuary. *The Ecology and Etiology of Newly Emerging Marine Diseases*. Porter, J.W., Ed. Springer, Dordrecht, 165-173. [http://dx.doi.org/10.1007/978-94-017-3284-0\\_15](http://dx.doi.org/10.1007/978-94-017-3284-0_15)
98. Louis, V.R., E. Russek-Cohen, N. Choopun, I.N.G. Rivera, B. Gangle, S.C. Jiang, A. Rubin, J.A. Patz, A. Huq, and R.R. Colwell, 2003: Predictability of *Vibrio cholerae* in Chesapeake Bay. *Applied and Environmental Microbiology*, **69**, 2773-2785. <http://dx.doi.org/10.1128/aem.69.5.2773-2785.2003>
99. Griffitt, K.J. and D.J. Grimes, 2013: Abundance and distribution of *Vibrio cholerae*, *V. parahaemolyticus*, and *V. vulnificus* following a major freshwater intrusion into the Mississippi Sound. *Microbial Ecology*, **65**, 578-583. <http://dx.doi.org/10.1007/s00248-013-0203-6>
100. Constantin de Magny, G., W. Long, C.W. Brown, R.R. Hood, A. Huq, R. Murtugudde, and R.R. Colwell, 2009: Predicting the distribution of *Vibrio* spp. in the Chesapeake Bay: A *Vibrio cholerae* case study. *EcoHealth*, **6**, 378-389. <http://dx.doi.org/10.1007/s10393-009-0273-6>
101. Hilborn, E.D., V.A. Roberts, L. Backer, E. DeConno, J.S. Egan, J.B. Hyde, D.C. Nicholas, E.J. Wiegert, L.M. Billing, M. DiOrio, M.C. Mohr, F.J. Hardy, T.J. Wade, J.S. Yoder, and M.C. Hlavsa, 2014: Algal bloom-associated disease outbreaks among users of freshwater lakes — United States, 2009–2010. *MMWR Morbidity and Mortality Weekly Report*, **63**, 11-15. <http://www.cdc.gov/mmwr/preview/mmwrhtml/mm6301a3.htm>
102. Paerl, H.W. and J. Huisman, 2008: Blooms like it hot. *Science*, **320**, 57-58. <http://dx.doi.org/10.1126/Science.1155398>
103. Paerl, H.W., N.S. Hall, and E.S. Calandrino, 2011: Controlling harmful cyanobacterial blooms in a world experiencing anthropogenic and climatic-induced change. *Science of The Total Environment*, **409**, 1739-1745. <http://dx.doi.org/10.1016/j.scitotenv.2011.02.001>
104. Paerl, H.W. and V.J. Paul, 2012: Climate change: Links to global expansion of harmful cyanobacteria. *Water Research*, **46**, 1349-1363. <http://dx.doi.org/10.1016/j.watres.2011.08.002>
105. Paerl, H.W. and T.G. Otten, 2013: Blooms bite the hand that feeds them. *Science*, **342**, 433-434. <http://dx.doi.org/10.1126/science.1245276>
106. Carey, C.C., B.W. Ibelings, E.P. Hoffmann, D.P. Hamilton, and J.D. Brookes, 2012: Eco-physiological adaptations that favour freshwater cyanobacteria in a changing climate. *Water Research*, **46**, 1394-1407. <http://dx.doi.org/10.1016/j.watres.2011.12.016>
107. Kosten, S., V.L.M. Huszar, E. Bécares, L.S. Costa, E. van Donk, L.-A. Hansson, E. Jeppesen, C. Kruk, G. Lacerot, N. Mazzeo, L. De Meester, B. Moss, M. Lürling, T. Nöges, S. Romo, and M. Scheffer, 2012: Warmer climates boost cyanobacterial dominance in shallow lakes. *Global Change Biology*, **18**, 118-126. <http://dx.doi.org/10.1111/j.1365-2486.2011.02488.x>
108. O'Neil, J.M., T.W. Davis, M.A. Burford, and C.J. Gobler, 2012: The rise of harmful cyanobacteria blooms: The potential roles of eutrophication and climate change. *Harmful Algae*, **14**, 313-334. <http://dx.doi.org/10.1016/j.hal.2011.10.027>
109. Elliott, J.A., 2010: The seasonal sensitivity of Cyanobacteria and other phytoplankton to changes in flushing rate and water temperature. *Global Change Biology*, **16**, 864-876. <http://dx.doi.org/10.1111/j.1365-2486.2009.01998.x>
110. Kirkpatrick, B., L.E. Fleming, L.C. Backer, J.A. Bean, R. Tamer, G. Kirkpatrick, T. Kane, A. Wanner, D. Dalpra, A. Reich, and D.G. Baden, 2006: Environmental exposures to Florida red tides: Effects on emergency room respiratory diagnoses admissions. *Harmful Algae*, **5**, 526-533. <http://dx.doi.org/10.1016/j.hal.2005.09.004>
111. Fleming, L.E., B. Kirkpatrick, L.C. Backer, C.J. Walsh, K. Nierenberg, J. Clark, A. Reich, J. Hollenbeck, J. Benson, Y.S. Cheng, J. Naar, R. Pierce, A.J. Bourdelais, W.M. Abraham, G. Kirkpatrick, J. Zaias, A. Wanner, E. Mendes, S. Shalat, P. Hoagland, W. Stephan, J. Bean, S. Watkins, T. Clarke, M. Byrne, and D.G. Baden, 2011: Review of Florida red tide and human health effects. *Harmful Algae*, **10**, 224-233. <http://dx.doi.org/10.1016/j.hal.2010.08.006>

112. Fleming, L.E., B. Kirkpatrick, L.C. Backer, J.A. Bean, A. Wanner, D. Dalpra, R. Tamer, J. Zaias, Y.-S. Cheng, R. Pierce, J. Naar, W. Abraham, R. Clark, Y. Zhou, M.S. Henry, D. Johnson, G. Van de Bogart, G.D. Bossart, M. Harrington, and D.G. Baden, 2005: Initial evaluation of the effects of aerosolized Florida red tide toxins (Brevetoxins) in persons with asthma. *Environmental Health Perspectives*, **113**, 650–657. <http://dx.doi.org/10.1289/ehp.7500>
113. Fleming, L.E., B. Kirkpatrick, L.C. Backer, J.A. Bean, A. Wanner, A. Reich, J. Zaias, Y.-S. Cheng, R. Pierce, J. Naar, W.M. Abraham, and D.G. Baden, 2007: Aerosolized red-tide toxins (Brevetoxins) and asthma. *Chest*, **131**, 187-194. <http://dx.doi.org/10.1378/chest.06-1830>
114. Thyng, K.M., R.D. Hetland, M.T. Ogle, X. Zhang, F. Chen, and L. Campbell, 2013: Origins of *Karenia brevis* harmful algal blooms along the Texas coast. *Limnology and Oceanography: Fluids and Environments*, **3**, 269-278. <http://dx.doi.org/10.1215/21573689-2417719>
115. Maier Brown, A.F., Q. Dortch, F.M. Van Dolah, T.A. Leighfield, W. Morrison, A.E. Thessen, K. Steidinger, B. Richardson, C.A. Moncreiff, and J.R. Pennock, 2006: Effect of salinity on the distribution, growth, and toxicity of *Karenia* spp. *Harmful Algae*, **5**, 199-212. <http://dx.doi.org/10.1016/j.hal.2005.07.004>
116. McLellan, S.L., E.J. Hollis, M.M. Depas, M. Van Dyke, J. Harris, and C.O. Scopel, 2007: Distribution and fate of *Escherichia coli* in Lake Michigan following contamination with urban stormwater and combined sewer overflows. *Journal of Great Lakes Research*, **33**, 566-580. [http://dx.doi.org/10.3394/0380-1330\(2007\)33%5B566:dafoec%5D2.0.co;2](http://dx.doi.org/10.3394/0380-1330(2007)33%5B566:dafoec%5D2.0.co;2)
117. Corsi, S.R., M.A. Borchardt, S.K. Spencer, P.E. Hughes, and A.K. Baldwin, 2014: Human and bovine viruses in the Milwaukee River watershed: Hydrologically relevant representation and relations with environmental variables. *Science of The Total Environment*, **490**, 849-860. <http://dx.doi.org/10.1016/j.scitotenv.2014.05.072>
118. Duris, J.W., A.G. Reif, D.A. Krouse, and N.M. Isaacs, 2013: Factors related to occurrence and distribution of selected bacterial and protozoan pathogens in Pennsylvania streams. *Water Research*, **47**, 300-314. <http://dx.doi.org/10.1016/j.watres.2012.10.006>
119. Staley, C., K.H. Reckhow, J. Lukasik, and V.J. Harwood, 2012: Assessment of sources of human pathogens and fecal contamination in a Florida freshwater lake. *Water Research*, **46**, 5799-5812. <http://dx.doi.org/10.1016/j.watres.2012.08.012>
120. McBride, G.B., R. Stott, W. Miller, D. Bambic, and S. Wuertz, 2013: Discharge-based QMRA for estimation of public health risks from exposure to stormwater-borne pathogens in recreational waters in the United States. *Water Research*, **47**, 5282-5297. <http://dx.doi.org/10.1016/j.watres.2013.06.001>
121. NOAA, 2014: Sea Level Rise and Nuisance Flood Frequency Changes around the United States. NOAA Technical Report NOS CO-OPS 073, 58 pp. U.S. Department of Commerce, National Oceanic and Atmospheric Administration, National Ocean Service, Silver Spring, MD. [http://tidesand-currents.noaa.gov/publications/NOAA\\_Technical\\_Report\\_NOS\\_COOPS\\_073.pdf](http://tidesand-currents.noaa.gov/publications/NOAA_Technical_Report_NOS_COOPS_073.pdf)
122. Casman, E., B. Fischhoff, M. Small, H. Dowlatabadi, J. Rose, and M.G. Morgan, 2001: Climate change and cryptosporidiosis: A qualitative analysis. *Climatic Change*, **50**, 219-249. <http://dx.doi.org/10.1023/a:1010623831501>
123. Naumova, E.N., J.S. Jagai, B. Matyas, A. DeMaria, I.B. MacNeill, and J.K. Griffiths, 2007: Seasonality in six enterically transmitted diseases and ambient temperature. *Epidemiology and Infection*, **135**, 281-292. <http://dx.doi.org/10.1017/S0950268806006698>
124. Peeters, F., D. Straile, A. Lorke, and D.M. Livingstone, 2007: Earlier onset of the spring phytoplankton bloom in lakes of the temperate zone in a warmer climate. *Global Change Biology*, **13**, 1898-1909. <http://dx.doi.org/10.1111/j.1365-2486.2007.01412.x>
125. Suikkanen, S., M. Laamanen, and M. Huttunen, 2007: Long-term changes in summer phytoplankton communities of the open northern Baltic Sea. *Estuarine, Coastal and Shelf Science*, **71**, 580-592. <http://dx.doi.org/10.1016/j.ecss.2006.09.004>
126. Wiedner, C., J. Rucker, R. Brüggemann, and B. Nixdorf, 2007: Climate change affects timing and size of populations of an invasive cyanobacterium in temperate regions. *Oecologia*, **152**, 473-484. <http://dx.doi.org/10.1007/s00442-007-0683-5>
127. Wagner, C. and R. Adrian, 2009: Cyanobacteria dominance: Quantifying the effects of climate change. *Limnology and Oceanography*, **54**, 2460-2468. [http://dx.doi.org/10.4319/lo.2009.54.6\\_part\\_2.2460](http://dx.doi.org/10.4319/lo.2009.54.6_part_2.2460)
128. Vincent, W.F. and A. Quesada, 2012: Cyanobacteria in high latitude lakes, rivers and seas. *Ecology of Cyanobacteria II: Their Diversity in Space and Time*. Whitton, B.A., Ed. Springer, New York, 371-385. <http://dx.doi.org/10.1007/978-94-007-3855-3>
129. Padisak, J., 1997: *Cylindrospermopsis raciborskii* (Woloszynska) Seenayya et Subba Raju, an expanding, highly adaptive cyanobacterium: Worldwide distribution and review of its ecology. *Archiv Für Hydrobiologie Supplementband Monographische Beitrage* **107**, 563-593. <http://real.mtak.hu/3229/1/1014071.pdf>
130. Stüken, A., J. Rucker, T. Endrulat, K. Preussel, M. Hemm, B. Nixdorf, U. Karsten, and C. Wiedner, 2006: Distribution of three alien cyanobacterial species (Nostocales) in northeast Germany: *Cylindrospermopsis raciborskii*, *Anabaena bergii* and *Aphanizomenon aphanizomenoides*. *Phycologia*, **45**, 696-703. <http://dx.doi.org/10.2216/05-58.1>

131. Elliott, J.A., 2012: Is the future blue-green? A review of the current model predictions of how climate change could affect pelagic freshwater cyanobacteria. *Water Research*, **46**, 1364-1371. <http://dx.doi.org/10.1016/j.watres.2011.12.018>
132. Jacobs, J., S.K. Moore, K.E. Kunkel, and L. Sun, 2015: A framework for examining climate-driven changes to the seasonality and geographical range of coastal pathogens and harmful algae. *Climate Risk Management*, **8**, 16-27. <http://dx.doi.org/10.1016/j.crm.2015.03.002>
133. Urquhart, E.A., B.F. Zaitchik, D.W. Waugh, S.D. Guikema, and C.E. Del Castillo, 2014: Uncertainty in model predictions of *Vibrio vulnificus* response to climate variability and change: A Chesapeake Bay case study. *PLoS ONE*, **9**, e98256. <http://dx.doi.org/10.1371/journal.pone.0098256>
134. Froelich, B.A., T.C. Williams, R.T. Noble, and J.D. Oliver, 2012: Apparent loss of *Vibrio vulnificus* from North Carolina oysters coincides with a drought-induced increase in salinity. *Applied and Environmental Microbiology*, **78**, 3885-3889. <http://dx.doi.org/10.1128/aem.07855-11>
135. Copat, C., G. Arena, M. Fiore, C. Ledda, R. Fallico, S. Sciacca, and M. Ferrante, 2013: Heavy metals concentrations in fish and shellfish from eastern Mediterranean Sea: Consumption advisories. *Food and Chemical Toxicology*, **53**, 33-37. <http://dx.doi.org/10.1016/j.fct.2012.11.038>
136. Ho, K.K.Y. and K.M.Y. Leung, 2014: Organotin contamination in seafood and its implication for human health risk in Hong Kong. *Marine Pollution Bulletin*, **85**, 634-640. <http://dx.doi.org/10.1016/j.marpolbul.2013.12.039>
137. Shapiro, K., M. Silver, J. Largier, J. Mazet, W. Miller, M. Odagiri, and A. Schriewer, 2012: Pathogen aggregation: Understanding when, where, and why seafood contamination occurs. *Journal of Shellfish Research*, **31**, 345. <http://dx.doi.org/10.2983/035.031.0124>
138. FDA, 2005: Quantitative Risk Assessment on the Public Health Impact of Pathogenic *Vibrio parahaemolyticus* in Raw Oysters. 309 pp. U.S. Department of Health and Human Services, Food and Drug Administration, Center for Food Safety and Applied Nutrition. <http://www.fda.gov/Food/FoodScienceResearch/RiskSafetyAssessment/ucm050421.htm>
139. Bellou, M., P. Kokkinos, and A. Vantarakis, 2013: Shellfish-borne viral outbreaks: A systematic review. *Food and Environmental Virology*, **5**, 13-23. <http://dx.doi.org/10.1007/s12560-012-9097-6>
140. Iwamoto, M., T. Ayers, B.E. Mahon, and D.L. Swerdlow, 2010: Epidemiology of seafood-associated infections in the United States. *Clinical Microbiology Reviews*, **23**, 399-411. <http://dx.doi.org/10.1128/Cmr.00059-09>
141. Le Saux, J., O. Serais, J. Krol, S. Parnaudeau, P. Salvagnac, G. Delmas, V. Cicchelerio, J. Claudet, P. Pothier, and K. Balay, 2009: Evidence of the presence of viral contamination in shellfish after short rainfall events. *6th International Conference on Molluscan Shellfish Safety*, Blenheim, New Zealand. Busby, P., Ed., pp. 256-252.
142. Wang, J. and Z. Deng, 2012: Detection and forecasting of oyster norovirus outbreaks: Recent advances and future perspectives. *Marine Environmental Research*, **80**, 62-69. <http://dx.doi.org/10.1016/j.marenvres.2012.06.011>
143. Riou, P., J.C. Le Saux, F. Dumas, M.P. Caprais, S.F. Le Guyader, and M. Pommepuy, 2007: Microbial impact of small tributaries on water and shellfish quality in shallow coastal areas. *Water Research*, **41**, 2774-2786. <http://dx.doi.org/10.1016/j.watres.2007.03.003>
144. Coulliette, A.D., E.S. Money, M.L. Serre, and R.T. Noble, 2009: Space/time analysis of fecal pollution and rainfall in an eastern North Carolina estuary. *Environmental Science & Technology*, **43**, 3728-3735. <http://dx.doi.org/10.1021/es803183f>
145. Lowther, J.A., K. Henshilwood, and D.N. Lees, 2008: Determination of norovirus contamination in oysters from two commercial harvesting areas over an extended period, using semiquantitative real-time reverse transcription PCR. *Journal of Food Protection*, **71**, 1427-1433.
146. Maalouf, H., M. Zakhour, J. Le Pendu, J.C. Le Saux, R.L. Atmar, and F.S. Le Guyader, 2010: Distribution in tissue and seasonal variation of norovirus genogroup I and II ligands in oysters. *Applied and Environmental Microbiology*, **76**, 5621-5630. <http://dx.doi.org/10.1128/aem.00148-10>
147. Woods, J.W. and W. Burkhardt, 2010: Occurrence of norovirus and hepatitis A virus in U.S. oysters. *Food and Environmental Virology*, **2**, 176-182. <http://dx.doi.org/10.1007/s12560-010-9040-7>
148. Crim, S.M., M. Iwamoto, J.Y. Huang, P.M. Griffin, D. Gilliss, A.B. Cronquist, M. Cartter, M. Tobin-D'Angelo, D. Blythe, K. Smith, S. Lathrop, S. Zansky, P.R. Cieslak, J. Dunn, K.G. Holt, S. Lance, R. Tauxe, and O.L. Henao, 2014: Incidence and trends of infections with pathogens transmitted commonly through food--Foodborne Diseases Active Surveillance Network, 10 U.S. sites, 2006-2013. *MMWR. Morbidity and Mortality Weekly Report*, **63**, 328-332. <http://www.cdc.gov/mmwr/preview/mmwrhtml/mm6315a3.htm>
149. Rippey, S.R., 1994: Infectious diseases associated with molluscan shellfish consumption. *Clinical Microbiology Reviews*, **7**, 419-425. <http://dx.doi.org/10.1128/cmr.7.4.419>
150. Lynch, M., J. Painter, R. Woodruff, and C. Braden, 2006: Surveillance for foodborne-disease outbreaks - United States, 1998-2002. *MMWR Surveillance Summaries*, **55(SS10)**, 1-42. [http://www.cdc.gov/mmwr/preview/mmwrhtml/ss5510a1.htm?\\_cid=ss](http://www.cdc.gov/mmwr/preview/mmwrhtml/ss5510a1.htm?_cid=ss)



151. Vugia, D., A. Cronquist, J. Hadler, M. Tobin-D'Angelo, D. Blythe, K. Smith, K. Thornton, D. Morse, P. Cieslak, T. Jones, K. Holt, J. Guzewich, O. Henao, E. Scallan, F. Angulo, P. Griffin, R. Tauxe, and E. Barzilay, 2006: Preliminary FoodNet data on the incidence of infection with pathogens transmitted commonly through food – 10 states, United States, 2005. *MMWR. Morbidity and Mortality Weekly Report*, **55**, 392-395. <http://www.cdc.gov/mmwr/preview/mmwrhtml/mm5514a2.htm>
152. Martinez-Urtaza, J., J.C. Bowers, J. Trinanés, and A. DePaola, 2010: Climate anomalies and the increasing risk of *Vibrio parahaemolyticus* and *Vibrio vulnificus* illnesses. *Food Research International*, **43**, 1780-1790. <http://dx.doi.org/10.1016/j.foodres.2010.04.001>
153. Martinez-Urtaza, J., C. Baker-Austin, J.L. Jones, A.E. Newton, G.D. Gonzalez-Aviles, and A. DePaola, 2013: Spread of Pacific Northwest *Vibrio parahaemolyticus* strain. *The New England Journal of Medicine*, **369**, 1573-1574. <http://dx.doi.org/10.1056/NEJMc1305535>
154. McLaughlin, J.B., A. DePaola, C.A. Bopp, K.A. Martinek, N.P. Napolilli, C.G. Allison, S.L. Murray, E.C. Thompson, M.M. Bird, and J.P. Middaugh, 2005: Outbreak of *Vibrio parahaemolyticus* gastroenteritis associated with Alaskan oysters. *The New England Journal of Medicine*, **353**, 1463-1470. <http://dx.doi.org/10.1056/NEJMoa051594>
155. Newton, A.E., N. Garrett, S.G. Stroika, J.L. Halpin, M. Turnsek, and R.K. Mody, 2014: Notes from the field: Increase in *Vibrio parahaemolyticus* infections associated with consumption of Atlantic Coast shellfish — 2013. *MMWR. Morbidity and Mortality Weekly Report*, **63**, 335-336. [http://origin.glb.cdc.gov/MMWR/preview/mmwrhtml/mm6315a6.htm?s\\_cid=mm6315a6\\_w](http://origin.glb.cdc.gov/MMWR/preview/mmwrhtml/mm6315a6.htm?s_cid=mm6315a6_w)
156. NSSP, 2011: National Shellfish Sanitation Program (NSSP) Guide for the Control of Molluscan Shellfish, 2011 Revision. 478 pp. U.S. Department of Health and Human Services, Public Health Service, Food and Drug Administration. <http://www.fda.gov/downloads/Food/GuidanceRegulation/FederalStateFoodPrograms/UCM350344.pdf>
157. Baker-Austin, C., J.A. Trinanés, N.G.H. Taylor, R. Hartnell, A. Siitonen, and J. Martinez-Urtaza, 2013: Emerging *Vibrio* risk at high latitudes in response to ocean warming. *Nature Climate Change*, **3**, 73-77. <http://dx.doi.org/10.1038/nclimate1628>
158. Ralston, E.P., H. Kite-Powell, and A. Beet, 2011: An estimate of the cost of acute health effects from food- and waterborne marine pathogens and toxins in the USA. *Journal of Water and Health*, **9**, 680-694. <http://dx.doi.org/10.2166/wh.2011.157>
159. Takemura, A.F., D.M. Chien, and M.F. Polz, 2014: Associations and dynamics of Vibrionaceae in the environment, from the genus to the population level. *Frontiers in Microbiology*, **5**. <http://dx.doi.org/10.3389/fmicb.2014.00038>
160. Hashizume, M., A.S.G. Faruque, T. Terao, M. Yunus, K. Streatfield, T. Yamamoto, and K. Moji, 2011: The Indian Ocean dipole and cholera incidence in Bangladesh: A time-series analysis. *Environmental Health Perspectives*, **119**, 239-244. <http://dx.doi.org/10.1289/ehp.1002302>
161. Lara, R.J., S.B. Neogi, M.S. Islam, Z.H. Mahmud, S. Yamasaki, and G.B. Nair, 2009: Influence of catastrophic climatic events and human waste on *Vibrio* distribution in the Karnaphuli Estuary, Bangladesh. *EcoHealth*, **6**, 279-286. <http://dx.doi.org/10.1007/s10393-009-0257-6>
162. Turner, J.W., B. Good, D. Cole, and E.K. Lipp, 2009: Plankton composition and environmental factors contribute to *Vibrio* seasonality. *The ISME Journal*, **3**, 1082-1092. <http://dx.doi.org/10.1038/ismej.2009.50>
163. Turner, J.W., L. Malayil, D. Guadagnoli, D. Cole, and E.K. Lipp, 2014: Detection of *Vibrio parahaemolyticus*, *Vibrio vulnificus* and *Vibrio cholerae* with respect to seasonal fluctuations in temperature and plankton abundance. *Environmental Microbiology*, **16**, 1019-1028. <http://dx.doi.org/10.1111/1462-2920.12246>
164. Campbell, L., R.J. Olson, H.M. Sosik, A. Abraham, D.W. Henrichs, C.J. Hyatt, and E.J. Buskey, 2010: First harmful *Dinophysis* (Dinophyceae, Dinophysiales) bloom in the U.S. is revealed by automated imaging flow cytometry. *Journal of Phycology*, **46**, 66-75. <http://dx.doi.org/10.1111/j.1529-8817.2009.00791.x>
165. Nishimura, T., S. Sato, W. Tawong, H. Sakanari, K. Uehara, M.M.R. Shah, S. Suda, T. Yasumoto, Y. Taira, H. Yamaguchi, and M. Adachi, 2013: Genetic diversity and distribution of the ciguatera-causing dinoflagellate *Gambierdiscus* spp. (Dinophyceae) in coastal areas of Japan. *PLoS ONE*, **8**, e60882. <http://dx.doi.org/10.1371/journal.pone.0060882>
166. Tester, P.A., R.P. Stumpf, F.M. Vukovich, P.K. Fowler, and J.T. Turner, 1991: An expatriate red tide bloom: Transport, distribution, and persistence. *Limnology and Oceanography*, **36**, 1053-1061. <http://onlinelibrary.wiley.com/doi/10.4319/lo.1991.36.5.1053/pdf>
167. Hallegraef, G.M., 1993: A review of harmful algae blooms and their apparent global increase. *Phycologia*, **32**, 79-99. <http://dx.doi.org/10.2216/i0031-8884-32-2-79.1>
168. Van Dolah, F.M., 2000: Marine algal toxins: Origins, health effects, and their increased occurrence. *Environmental Health Perspectives*, **108**, 133-141. PMC1637787
169. Sellner, K.G., G.J. Doucette, and G.J. Kirkpatrick, 2003: Harmful algal blooms: Causes, impacts and detection. *Journal of Industrial Microbiology and Biotechnology*, **30**, 383-406. <http://dx.doi.org/10.1007/s10295-003-0074-9>
170. Chateau-Degat, M.-L., M. Chinain, N. Cerf, S. Gingras, B. Hubert, and É. Dewailly, 2005: Seawater temperature, *Gambierdiscus* spp. variability and incidence of ciguatera poisoning in French Polynesia. *Harmful Algae*, **4**, 1053-1062. <http://dx.doi.org/10.1016/j.hal.2005.03.003>



171. Gingold, D.B., M.J. Strickland, and J.J. Hess, 2014: Ciguatera fish poisoning and climate change: Analysis of National Poison Center Data in the United States, 2001–2011. *Environmental Health Perspectives*, **122**, 580-586. <http://dx.doi.org/10.1289/ehp.1307196>
172. Tester, P.A., R.L. Feldman, A.W. Nau, S.R. Kibler, and R. Wayne Litaker, 2010: Ciguatera fish poisoning and sea surface temperatures in the Caribbean Sea and the West Indies. *Toxicon*, **56**, 698-710. <http://dx.doi.org/10.1016/j.toxicon.2010.02.026>
173. Litaker, R.W., M.W. Vandersea, M.A. Faust, S.R. Kibler, M. Chinain, M.J. Holmes, W.C. Holland, and P.A. Tester, 2009: Taxonomy of Gambierdiscus including four new species, Gambierdiscus caribaeus, Gambierdiscus carolinianus, Gambierdiscus carpenteri and Gambierdiscus ruetzleri (Gonyaulacales, Dinophyceae). *Phycologia*, **48**, 344-390. <http://dx.doi.org/10.2216/07-15.1>
174. Hales, S., P. Weinstein, and A. Woodward, 1999: Ciguatera (fish poisoning), El Niño, and Pacific sea surface temperatures. *Ecosystem Health*, **5**, 20-25. <http://dx.doi.org/10.1046/j.1526-0992.1999.09903.x>
175. Erdner, D.L., J. Dyble, M.L. Parsons, R.C. Stevens, K.A. Hubbard, M.L. Wrabel, S.K. Moore, K.A. Lefebvre, D.M. Anderson, P. Bienfang, R.R. Bidigare, M.S. Parker, P. Moeller, L.E. Brand, and V.L. Trainer, 2008: Centers for oceans and human health: A unified approach to the challenge of harmful algal blooms. *Environmental Health*, **7**, S2. <http://dx.doi.org/10.1186/1476-069X-7-S2-S2>
176. Moore, S.K., N.J. Mantua, B.M. Hickey, and V.L. Trainer, 2010: The relative influences of El Niño-Southern Oscillation and Pacific Decadal Oscillation on paralytic shellfish toxin accumulation in northwest Pacific shellfish. *Limnology and Oceanography*, **55**, 2262-2274. <http://dx.doi.org/10.4319/lo.2010.55.6.2262>
177. Moore, S.K., N.J. Mantua, and E.P. Salathé, Jr., 2011: Past trends and future scenarios for environmental conditions favoring the accumulation of paralytic shellfish toxins in Puget Sound shellfish. *Harmful Algae*, **10**, 521-529. <http://dx.doi.org/10.1016/j.hal.2011.04.004>
178. Trainer, V.L., B.-T.L. Eberhart, J.C. Wekell, N.G. Adams, L. Hanson, F. Cox, and J. Dowell, 2003: Paralytic shellfish toxins in Puget Sound, Washington state. *Journal of Shellfish Research*, **22**, 213-223.
179. Hattenrath, T.K., D.M. Anderson, and C.J. Gobler, 2010: The influence of anthropogenic nitrogen loading and meteorological conditions on the dynamics and toxicity of *Alexandrium fundyense* blooms in a New York (USA) estuary. *Harmful Algae*, **9**, 402-412. <http://dx.doi.org/10.1016/j.hal.2010.02.003>
180. Anderson, D.M., D.A. Couture, J.L. Kleindhinst, B.A. Keafer, D.J. McGillicuddy Jr., J.L. Martin, M.L. Richlen, J.M. Hickey, and A.R. Solow, 2014: Understanding interannual, decadal level variability in paralytic shellfish poisoning toxicity in the Gulf of Maine: The HAB Index. *Deep-Sea Research II*, **103**, 264-276. <http://dx.doi.org/10.1016/j.dsr2.2013.09.018>
181. Nair, A., A.C. Thomas, and M.E. Borsuk, 2013: Interannual variability in the timing of New England shellfish toxicity and relationships to environmental forcing. *Science of The Total Environment*, **447**, 255-266. <http://dx.doi.org/10.1016/j.scitotenv.2013.01.023>
182. Thomas, A.C., R. Weatherbee, H. Xue, and G. Liu, 2010: Interannual variability of shellfish toxicity in the Gulf of Maine: Time and space patterns and links to environmental variability. *Harmful Algae*, **9**, 458-480. <http://dx.doi.org/10.1016/j.hal.2010.03.002>
183. McGillicuddy, D.J., Jr., D.W. Townsend, R. He, B.A. Keafer, J.L. Kleindhinst, Y. Li, J.P. Manning, D.G. Mountain, M.A. Thomas, and D.M. Anderson, 2011: Suppression of the 2010 *Alexandrium fundyense* bloom by changes in physical, biological, and chemical properties of the Gulf of Maine. *Limnology and Oceanography*, **56**, 2411-2426. <http://dx.doi.org/10.4319/lo.2011.56.6.2411>
184. Parsons, M.L. and Q. Dortch, 2002: Sedimentological evidence of an increase in *Pseudo-nitzschia* (Bacillariophyceae) abundance in response to coastal eutrophication. *Limnology and Oceanography*, **47**, 551-558. <http://dx.doi.org/10.4319/lo.2002.47.2.0551>
185. Fryxell, G.A., M.C. Villac, and L.P. Shapiro, 1997: The occurrence of the toxic diatom genus *Pseudo-nitzschia* (Bacillariophyceae) on the West Coast of the USA, 1920–1996: A review. *Phycologia*, **36**, 419-437. <http://dx.doi.org/10.2216/i0031-8884-36-6-419.1>
186. Trainer, V.L., L. Moore, B.D. Bill, N.G. Adams, N. Harrington, J. Borchert, D.A.M. da Silva, and B.-T.L. Eberhart, 2013: Diarrhetic shellfish toxins and other lipophilic toxins of human health concern in Washington state. *Marine Drugs*, **11**, 1815-1835. <http://dx.doi.org/10.3390/md11061815>
187. Belgrano, A., O. Lindahl, and B. Henroth, 1999: North Atlantic Oscillation primary productivity and toxic phytoplankton in the Gullmar Fjord, Sweden (1985-1996). *Proceedings of the Royal Society B: Biological Sciences*, **266**, 425-430. <http://dx.doi.org/10.1098/rspb.1999.0655>
188. Anderson, D.M., A.D. Cembella, and G.M. Hallegraeff, 2012: Progress in understanding harmful algal blooms: Paradigm shifts and new technologies for research, monitoring, and management. *Annual Review of Marine Science*, **4**, 143-76. <http://dx.doi.org/10.1146/annurev-marine-120308-081121>

189. Fu, F.X., A.O. Tatters, and D.A. Hutchins, 2012: Global change and the future of harmful algal blooms in the ocean. *Marine Ecology Progress Series*, **470**, 207-233. <http://dx.doi.org/10.3354/meps10047>
190. Moore, S.K., V.L. Trainer, N.J. Mantua, M.S. Parker, E.A. Laws, L.C. Backer, and L.E. Fleming, 2008: Impacts of climate variability and future climate change on harmful algal blooms and human health. *Environmental Health*, **7**, S4. <http://dx.doi.org/10.1186/1476-069X-7-S2-S4>
191. Hallegraeff, G.M., 2010: Ocean climate change, phytoplankton community responses, and harmful algal blooms: A formidable predictive challenge. *Journal of Phycology*, **46**, 220-235. <http://dx.doi.org/10.1111/j.1529-8817.2010.00815.x>
192. Backer, L.C. and S.K. Moore, 2012: Harmful algal blooms: Future threats in a warmer world. *Environmental Pollution and Its Relation to Climate Change*. El-Nemr, A., Ed. Nova Science Publishers, New York, 485-512.
193. Laws, E.A., 2007: Climate change, oceans, and human health. *Ocean Yearbook 21*. Chircop, A., S. Coffen-Smout, and M. McConnell, Eds. Bridge Street Books, 129-175. <http://dx.doi.org/10.1163/221160007X00074>
194. Hays, G.C., A.J. Richardson, and C. Robinson, 2005: Climate change and marine plankton. *TRENDS in Ecology and Evolution*, **20**, 337-344. <http://dx.doi.org/10.1016/j.tree.2005.03.004>
195. Berdalet, E., F. Peters, V.L. Koumandou, C. Roldán, Ó. Guadayol, and M. Estrada, 2007: Species-specific physiological response of dinoflagellates to quantified small-scale turbulence. *Journal of Phycology*, **43**, 965-977. <http://dx.doi.org/10.1111/j.1529-8817.2007.00392.x>
196. Margalef, R., M. Estrada, and D. Blasco, 1979: Functional morphology of organisms involved in red tides, as adapted to decaying turbulence. *Toxic Dinoflagellate Blooms*. Taylor, D.L. and H.H. Seliger, Eds. Elsevier North Holland, Amsterdam, 89-94.
197. Hinder, S.L., G.C. Hays, M. Edwards, E.C. Roberts, A.W. Walne, and M.B. Gravenor, 2012: Changes in marine dinoflagellate and diatom abundance under climate change. *Nature Climate Change*, **2**, 271-275. <http://dx.doi.org/10.1038/nclimate1388>
198. Moore, S.K., J.A. Johnstone, N.S. Banas, and E.P.S. Jr., 2015: Present-day and future climate pathways affecting *Alexandrium* blooms in Puget Sound, WA, USA. *Harmful Algae*, **48**, 1-11. <http://dx.doi.org/10.1016/j.hal.2015.06.008>
199. Kibler, S.R., P.A. Tester, K.E. Kunkel, S.K. Moore, and R.W. Litaker, 2015: Effects of ocean warming on growth and distribution of dinoflagellates associated with ciguatera fish poisoning in the Caribbean. *Ecological Modelling*, **316**, 194-210. <http://dx.doi.org/10.1016/j.ecolmodel.2015.08.020>
200. VanDerslice, J., 2011: Drinking water infrastructure and environmental disparities: Evidence and methodological considerations. *American Journal of Public Health*, **101**, S109-S114. <http://dx.doi.org/10.2105/AJPH.2011.300189>
201. Balazs, C.L. and I. Ray, 2014: The drinking water disparities framework: On the origins and persistence of inequities in exposure. *American Journal of Public Health*, **104**, 603-610. <http://dx.doi.org/10.2105/AJPH.2013.301664>
202. Heaney, C.D., S. Wing, S.M. Wilson, R.L. Campbell, D. Caldwell, B. Hopkins, S. O'Shea, and K. Yeatts, 2013: Public infrastructure disparities and the microbiological and chemical safety of drinking and surface water supplies in a community bordering a landfill. *Journal of Environmental Health*, **75**, 24-36. PMC4514614
203. Wilson, S.M., C.D. Heaney, and O. Wilson, 2010: Governance structures and the lack of basic amenities: Can community engagement be effectively used to address environmental in justice in underserved Black communities? *Environmental Justice*, **3**, 125-133. <http://dx.doi.org/10.1089/env.2010.0014>
204. Jepson, W., 2014: Measuring 'no-win' waterscapes: Experience-based scales and classification approaches to assess household water security in *colonias* on the US-Mexico border. *Geoforum*, **51**, 107-120. <http://dx.doi.org/10.1016/j.geoforum.2013.10.002>
205. Wescoat, J.L., Jr., L. Headington, and R. Theobald, 2007: Water and poverty in the United States. *Geoforum*, **38**, 801-814. <http://dx.doi.org/10.1016/j.geoforum.2006.08.007>
206. Hennessy, T.W., T. Ritter, R.C. Holman, D.L. Bruden, K.L. Yorita, L. Bulkow, J.E. Cheek, R.J. Singleton, and J. Smith, 2008: The relationship between in-home water service and the risk of respiratory tract, skin, and gastrointestinal tract infections among rural Alaska natives. *American Journal of Public Health*, **98**, 2072-2078. <http://dx.doi.org/10.2105/ajph.2007.115618>
207. Furth, D.P., 2010: What's in the water? Climate change, waterborne pathogens, and the safety of the rural Alaskan water supply. *Hastings West-Northwest Journal of Environmental Law and Policy*, **16**, 251-276.
208. Evengard, B., J. Berner, M. Brubaker, G. Mulvad, and B. Revich, 2011: Climate change and water security with a focus on the Arctic. *Global Health Action*, **4**. <http://dx.doi.org/10.3402/gha.v4i0.8449>
209. Lane, K., K. Charles-Guzman, K. Wheeler, Z. Abid, N. Graber, and T. Matte, 2013: Health effects of coastal storms and flooding in urban areas: A review and vulnerability assessment. *Journal of Environmental and Public Health*, **2013**, Article ID 913064. <http://dx.doi.org/10.1155/2013/913064>

210. Xu, Z., P.E. Sheffield, W. Hu, H. Su, W. Yu, X. Qi, and S. Tong, 2012: Climate change and children's health—A call for research on what works to protect children. *International Journal of Environmental Research and Public Health*, **9**, 3298-3316. <http://dx.doi.org/10.3390/ijerph9093298>
211. Bernstein, A.S. and S.S. Myers, 2011: Climate change and children's health. *Current Opinion in Pediatrics*, **23**, 221-226. <http://dx.doi.org/10.1097/MOP.0b013e3283444c89>
212. Kistin, E.J., J. Fogarty, R.S. Pokrasso, M. McCally, and P.G. McCornick, 2010: Climate change, water resources and child health. *Archives of Disease in Childhood*, **95**, 545-549. <http://dx.doi.org/10.1136/adc.2009.175307>
213. Lopman, B.A., A.J. Hall, A.T. Curns, and U.D. Parashar, 2011: Increasing rates of gastroenteritis hospital discharges in US adults and the contribution of norovirus, 1996-2007. *Clinical Infectious Diseases*, **52**, 466-474. <http://dx.doi.org/10.1093/cid/ciq163>
214. Rylander, C., J.O. Odland, and T.M. Sandanger, 2013: Climate change and the potential effects on maternal and pregnancy outcomes: An assessment of the most vulnerable—the mother, fetus, and newborn child. *Global Health Action*, **6**, 19538. <http://dx.doi.org/10.3402/gha.v6i0.19538>
215. CDC, 2012: Cryptosporidiosis Surveillance —United States, 2009–2010 and Giardiasis Surveillance —United States, 2009–2010. *MMWR Surveillance Summaries*, **61(5)**, 1-23. <http://www.cdc.gov/mmwr/pdf/ss/ss6105.pdf>
216. Judd, N.L., C.H. Drew, C. Acharya, Marine Resources for Future Generations, T.A. Mitchell, J.L. Donatuto, G.W. Burns, T.M. Burbacher, and E.M. Faustman, 2005: Framing scientific analyses for risk management of environmental hazards by communities: Case studies with seafood safety issues. *Environmental Health Perspectives*, **113**, 1502-1508. <http://dx.doi.org/10.1289/ehp.7655>
217. Donatuto, J.L., T.A. Satterfield, and R. Gregory, 2011: Poisoning the body to nourish the soul: Prioritising health risks and impacts in a Native American community. *Health, Risk & Society*, **13**, 103-127. <http://dx.doi.org/10.1080/13698575.2011.556186>
218. Lefebvre, K.A. and A. Robertson, 2010: Domoic acid and human exposure risks: A review. *Toxicol*, **56**, 218-230. <http://dx.doi.org/10.1016/j.toxicol.2009.05.034>
219. Lewitus, A.J., R.A. Horner, D.A. Caron, E. Garcia-Mendoza, B.M. Hickey, M. Hunter, D.D. Huppert, R.M. Kudela, G.W. Langlois, J.L. Largier, E.J. Lessard, R. RaLonde, J.E.J. Rensel, P.G. Strutton, V.L. Trainer, and J.F. Tweddle, 2012: Harmful algal blooms along the North American west coast region: History, trends, causes, and impacts. *Harmful Algae*, **19**, 133-159. <http://dx.doi.org/10.1016/j.hal.2012.06.009>
220. Yoder, J.S., S. Straif-Bourgeois, S.L. Roy, T.A. Moore, G.S. Visvesvara, R.C. Ratard, V.R. Hill, J.D. Wilson, A.J. Linscott, R. Crager, N.A. Kozak, R. Sriram, J. Narayanan, B. Mull, A.M. Kahler, C. Schneeberger, A.J. da Silva, M. Poudel, K.L. Baumgarten, L. Xiao, and M.J. Beach, 2012: Primary amebic meningoencephalitis deaths associated with sinus irrigation using contaminated tap water. *Clinical Infectious Diseases*, **55**, e79-e85. <http://dx.doi.org/10.1093/cid/cis626>
221. Kemble, S.K., R. Lynfield, A.S. DeVries, D.M. Drehner, W.F. Pomputius, M.J. Beach, G.S. Visvesvara, A.J. da Silva, V.R. Hill, J.S. Yoder, L. Xiao, K.E. Smith, and R. Danila, 2012: Fatal *Naegleria fowleri* infection acquired in Minnesota: Possible expanded range of a deadly thermophilic organism. *Clinical Infectious Diseases*, **54**, 805-809. <http://dx.doi.org/10.1093/cid/cir961>
222. Goudot, S., P. Herbelin, L. Mathieu, S. Soreau, S. Banas, and F. Jorand, 2012: Growth dynamic of *Naegleria fowleri* in a microbial freshwater biofilm. *Water Research*, **46**, 3958-3966. <http://dx.doi.org/10.1016/j.watres.2012.05.030>
223. Puzon, G.J., J.A. Lancaster, J.T. Wylie, and J.J. Plumb, 2009: Rapid detection of *Naegleria fowleri* in water distribution pipeline biofilms and drinking water supplies. *Environmental Science & Technology*, **43**, 6691-6696. <http://dx.doi.org/10.1021/es900432m>
224. Cope, J.R., R.C. Ratard, V.R. Hill, T. Sokol, J.J. Causey, J.S. Yoder, G. Mirani, B. Mull, K.A. Mukerjee, J. Narayanan, M. Doucet, Y. Qvarnstrom, C.N. Poole, O.A. Akingbola, J. Ritter, Z. Xiong, A. da Silva, D. Roellig, R. Van Dyke, H. Stern, L. Xiao, and M.J. Beach, 2015: First association of a primary amebic meningoencephalitis death with culturable *Naegleria fowleri* in tap water from a US treated public drinking water system. *Clinical Infectious Diseases*, **60**, e36-e42. <http://dx.doi.org/10.1093/cid/civ017>
225. Carrie, J., F. Wang, H. Sanei, R.W. Macdonald, P.M. Outridge, and G.A. Stern, 2010: Increasing contaminant burdens in an arctic fish, Burbot (*Lota lota*), in a warming climate. *Environmental Science & Technology*, **44**, 316-322. <http://dx.doi.org/10.1021/es902582y>
226. Balbus, J.M., A.B. Boxall, R.A. Fenske, T.E. McKone, and L. Zeise, 2013: Implications of global climate change for the assessment and management of human health risks of chemicals in the natural environment. *Environmental Toxicology and Chemistry*, **32**, 62-78. <http://dx.doi.org/10.1002/etc.2046>



